

# leisureopportunities

14 JANUARY – 27 JANUARY 2011 ISSUE 545

Daily news & jobs: [www.leisureopportunities.co.uk](http://www.leisureopportunities.co.uk)

## Gove reveals school sports plans

PETE HAYMAN

Education secretary Michael Gove has outlined the coalition government's proposals for the future delivery and funding of school sports.

Every secondary school is to receive a share of £65m in 2011-12 and 2012-13 to help PE teachers drive up participation in primary schools. The funding, which will pay for PE teachers to spend time out of the classroom one day a week, will also help establish a fixture network for schools to encourage competition.

Meanwhile, school sport partnerships will be funded by the Department of Education until the end of the 2011 summer term at a cost of £47m. National Lottery funding will be used to establish a framework of competition as part of the School Games concept, while competitive sport will be at the heart of a revised PE curriculum.



School Sport Partnerships will stay until the end of summer term 2011

Elsewhere, Dame Kelly Holmes will be invited to lead 'sporting advocates' to help promote school sport around the country, while the Youth Sport Trust will be funded to expand the Young Ambassadors programme, with every secondary school able to appoint ambassadors ahead of the 2012 Olympics.



Swansea's Cwmdonkin Park has secured funding

## Four park schemes secure HLF backing

PETE HAYMAN

Four historic UK parks are to undergo major restoration work after National Lottery funding support was confirmed.

Wandle Park in Croydon and The Green in Allerdale, Cumbria, are to receive a share of £3.1m from the Heritage Lottery Fund (HLF) and Big Lottery Fund (BIG). Swansea's Cwmdonkin Park and Aberdeen's Duthie Park will benefit from a separate £3.3m investment by the HLF.

An additional 11 parks will receive a share of £900,000 of initial HLF/BIG support.

## David Bernstein nominated to chair FA

PETE HAYMAN

David Bernstein has been nominated to become the new chair of the Football Association (FA).

The FA Board unanimously backed Bernstein's nomination, with the organisation's council to endorse the appointment on 25 January.

Acting chair Roger Burden said: "The board was united in its view that David would make an excellent choice as chair of the organisation. We look forward to working with David to take the FA forward in the best interests of football at all levels."

## Mayoral approval for Battersea plans

PETE HAYMAN

Real Estate Opportunities' (REO) bid to redevelop Battersea Power Station has cleared its latest planning milestone with the green light from London mayor Boris Johnson.

The £5.5bn scheme – designed by Rafael Viñoly – was approved by Wandsworth Council last month and will include support towards an extension of the Northern Line.

REO's plans for the site include the restoration of the Grade II\*-listed power station site – decommissioned in 1983 – and 700,000sq ft (65,032sq m) of restaurant and retail space.

A hotel, community facilities, a conference centre, a riverside park and public access to the



The project will rejuvenate the historic power station

restored areas of the power station building are also proposed as part of the development.

Johnson said: "With its future secured through this regeneration, it will once again play a part in driving London's economy."

**GET  
LEISURE  
OPPS**

**Magazine** sign up at  
[leisureopportunities.co.uk/subs](http://leisureopportunities.co.uk/subs)

**Job board** live job updates  
[leisureopportunities.co.uk](http://leisureopportunities.co.uk)

**PDF** for iPad, Kindle & smart phone  
[leisureopportunities.co.uk/pdf](http://leisureopportunities.co.uk/pdf)

**Ezine** sign up for weekly updates,  
[leisureopportunities.co.uk/ezine](http://leisureopportunities.co.uk/ezine)

**Online** on digital turning pages  
[leisureopportunities.co.uk/digital](http://leisureopportunities.co.uk/digital)

**Instant** sign up for instant alerts,  
[leisureopportunities.co.uk/instant](http://leisureopportunities.co.uk/instant)

**Twitter** follow us:  
[@leisureoppops](https://twitter.com/leisureoppops) [@leisureoppopsjobs](https://twitter.com/leisureoppopsjobs)

**RSS** sign up for job & news feeds  
[leisureopportunities.co.uk/rss](http://leisureopportunities.co.uk/rss)

The Leisure Media Company  
Portmill House, Portmill Lane,  
Hitchin, Herts SG5 1DJ, UK  
Tel: +44 (0)1462 431385  
Fax: +44 (0)1462 433909  
e-mail: please use contacts'  
fullname@leisuremedia.com

### Subscriptions

01462 431385  
subs@leisuremedia.com

### Editor

Liz Terry 01462 431385

### Managing Editor

Tom Walker 01462 471934

### Journalists

Pete Hayman 01462 471938

Martin Nash 01462 471933

### Design

Ed Gallagher 01905 20198

### Internet

Dean Fox 01462 471900

Tim Nash 01462 471917

### Sales Team Manager

Annie Lovell 01462 471901

### Account Managers

Recruitment, training, tenders  
Paul Thorman 01462 471904

Simon Hinksman 01462 471905

Emma Matthews 01462 471907

Sarah Gibbs 01462 471908

### Property desk

Simon Hinksman 01462 471905

### Spa Opportunities

Emma Matthews 01462 471907

### Financial Controller

Sue Davis 01395 519398

### Financial Administrator

Denise Gildea 01462 471930

### Circulation Manager

Michael Emmerson 01462 471932

### Subscribe to Leisure Opportunities,

Online: [www.leisuresubs.com](http://www.leisuresubs.com)

Email: [subs@leisuremedia.com](mailto:subs@leisuremedia.com)

Tel: +44 (0)1462 471913

Annual subscription rates are UK £31,

Europe £41, Rest of world £62, students UK £16.

Leisure Opportunities is published fortnightly by The Leisure Media Company Limited, Portmill House, Portmill Lane, Hitchin, Herts SG5 1DJ, UK and is distributed in the USA by SPP, 75 Aberdeen Road, Emigsville, PA 17318-0437. Periodicals postage paid @ Manchester, PA POSTMASTER Send US address changes to Leisure Opportunities, c/o PO Box 437, Emigsville, PA 17318-0437.

The views expressed in print are those of the author and do not necessarily represent those of the publisher The Leisure Media Company Limited. All rights reserved. No part of this publication may be reproduced, stored in a retrieval system or transmitted in any form or by means, electronic, mechanical, photocopying, recorded or otherwise without the prior permission of the copyright holder. Printed by Warners Midland plc.

©The Leisure Media Company Limited 2011

ISSN 0952/8210

## SPORT

# Olympic legacy plans published

PETE HAYMAN

London 2012 will generate a number of sporting, economic and social benefits for the UK under new legacy proposals outlined by the government.

Plans for the legacy from the 2012 Olympic and Paralympic Games has been made available by the government, which sets out how it will maximise the event's potential through four main areas: increasing grassroots participation; exploiting opportunities for growth; promoting community engagement; and the regeneration of East London.

Although the new plans have been produced by the government, a number of organisations will be involved in the delivery of the legacy.

In the new document, the government said: "It is important that we are able in the future to assess the benefits of the Games and their



Increasing grassroots participation is one of the key aims of the Games

legacy. For that reason, we have engaged a consortium from the private and academic sectors, led by Grant Thornton, to carry out a meta-evaluation of the 2012 Games' benefits and legacy, which will bring together evidence relating to the benefits of individual legacy initiatives into a coherent whole."

## New sports and culture strategy for Ipswich

PETE HAYMAN

Ipswich Borough Council has confirmed that its new strategy for sports and culture for the city is to be put out to consultation.

The new Cultural Strategy sets out a number of aims, including the completion of a £3.4m

investment programme at Crown Pools and an expanded arts festival.

Other targets include the provision of £1m to revitalise Broomhill Lido; the creation of a sports village at Gainsborough sports centre; and the development of a new arts quarter.

## LCCC stands firm over ground challenge

PETE HAYMAN

Lancashire County Cricket Club (LCCC) will continue with work on its Old Trafford ground in Manchester, despite a legal challenge from Derwent Holdings.

A judicial review is being sought by Derwent Holdings – owner of the nearby White City shopping park – over Trafford Council's decision to back the £70m scheme.

In September, LCCC was told the government had decided not to call in the local authority's decision to approve the development.

Working with Ask Developments, the current £32m investment phase is now underway to deliver new pitches, two new grandstands and player and media facilities.



Old Trafford is to undergo a major redevelopment to improve facilities

LCCC has embarked on an overhaul of the stadium in order to help secure an Ashes test match in 2013 and secure Old Trafford's future as an international ground.



# Sports pledge cash for grassroots

PETE HAYMAN

A number of national governing bodies (NGBs) are to reinvest at least 30 per cent of UK broadcasting revenues in grassroots sports.

Signatories to a voluntary code of conduct established by the Sport and Recreation Alliance (SRA) include the Football Association, UK Athletics and the England and Wales Cricket Board.

The PGA European Tour; the Rugby Football League; Premier League; the R&A; and the Lawn Tennis Association/ All England Lawn Tennis Club also made the pledge. Each of the NGBs have committed to directing at least 30 per cent – around £250m per year – of net revenues from the sale of UK broadcasting rights in grassroots provision.

SRA chief executive Tim Lamb said: “The code of conduct shows that underlying the sale



The England and Wales Cricket Board is one of the code's signatories

of broadcasting rights is the principle that the grassroots of sport should be a major beneficiary from the revenues raised.

“Striking the right balance between audience reach, revenue generation and grassroots investment is a matter for the governing bodies themselves to determine.”

## RFU in 'significant' restructuring process

PETE HAYMAN

A single department will be responsible for all rugby elements of the Rugby Football Union (RFU) following a “significant” restructuring process of the organisation.

The department will be divided into three areas – performance, operations and development – and will see directors reporting to chief executive officer John Steele.

It is hoped that the restructuring process will help improve the quality of the game from elite level down to the grassroots



The RFU anticipates that the restructuring will benefit the English game

A number of positions have been abolished in the shake-up, including community rugby director; tournaments and competitions director; and head of planning.

Meanwhile, two new roles are to be created – a chief commercial officer to be responsible for all revenue generating elements of the RFU and a chief financial officer.

## Macclesfield Town stadium plans approved

PETE HAYMAN

Cheshire East Council has approved plans for Macclesfield Town Football Club's new stadium as part of a wider regeneration scheme.

Leisure and retail facilities also form part of proposals for the South Macclesfield

Development Area, which could incorporate an arts and entertainment space.

In addition to the proposed 7,000-seat stadium, a sports complex also features as part of the plans for the South Macclesfield site to complement a rejuvenated town centre.

## Work to start on UEA gymnastics centre

PETE HAYMAN

Work has started on a new £2.8m Olympic Gymnastics Centre at the University of East Anglia's (UEA) Sportspark.

Due to be completed by 22 August, the 648sq m (6,975sq ft) facility will be built by Kier Eastern at the back of the existing Haydn Morris Hall.

The gymnastics centre will feature pits for vaulting, a high bar, a tumble track, a floor area and a floor level trampoline. Spectator areas at ground and first floor level are also proposed for the venue.



Proposed facilities for the National Forest venue

## Play area for new National Forest Cycle Centre

PETE HAYMAN

Pick Everard has announced that it is working on the design of a new play area that will be among the facilities at the National Forest Cycle Centre, Leicestershire.

The play area will accompany more than 8 miles (12.9km) of off-road cycling trails; a visitor centre and café; and a bike workshop. A miniature landscape with river, hills and trees feature as part of the design.

Due to open in spring, the new centre is being developed by the National Forest Company and the Forestry Commission.

## Castleford Tigers submit stadium proposals

PETE HAYMAN

Castleford Tigers rugby league club has submitted detailed plans for the development of a new stadium at Glasshoughton.

Tigers chief executive Richard Wright delivered the proposals to Wakefield Metropolitan District Council in December, which include a 13,300-capacity stadium near Junction 32 of the M62 motorway.

It is hoped councillors will reach a decision by the end of March. The local authority has already agreed to provide £2m towards the development.

### Montrose pool scheme contractor named

PETE HAYMAN

Ogilvie Construction's £7.05m tender for the construction of a new swimming pool in Montrose has been given the green light by local councillors.

Angus Council approved the Stirling-based firm's submission, which was the lowest of six tenders that had been received for the swimming pool scheme.

The local authority now estimates that the project will cost £7.9m – £2m less than it had previously estimated and within the £10m set aside for the work.



The club has been taken over by a private owner

### Gym member buys club out of administration

TOM WALKER

Paul Dumbell and Brian Green of KPMG, joint administrators of Simpson Leisure Limited, have agreed to sell the Old Hall Health Club and Spa near Knutsford, Cheshire, to a club member – Will Banks.

The sale of the club was brokered by specialist agents Christie + Co, who acted on behalf of the administrators.

The acquisition includes a split-level health and fitness club, spa treatment area, indoor heated swimming pool, group exercise studio, tennis courts and lounge bar.

### Councillors approve Wiltshire leisure proposals

PETE HAYMAN

Plans for an overhaul and reorganisation of indoor leisure facilities across Wiltshire have been given the green light.

Wiltshire County Council has backed a refined proposal, which is set to include four new-build 'campus' schemes.

Warminster, Melksham, Trowbridge and Amesbury/Durrington are the locations in line to benefit from the new facilities.

Improvements are planned for facilities in Devizes and Salisbury, in addition to the refurbishment of the Olympiad campus.

## Swan Leisure opens in Dublin

PETE HAYMAN

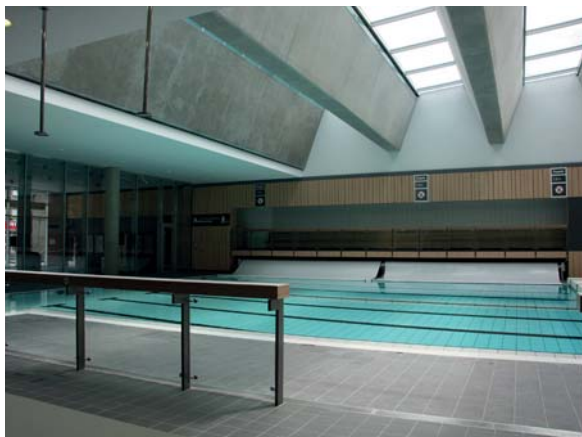
Swan Leisure, a new Donnelly Turpin Architects-designed leisure centre in Rathmines, Dublin, has been unveiled.

John Paul Construction built the new complex on behalf of Dublin City Council, which forms part of the wider €36m (£30.5m) Rathmines Square development.

Facilities include a 49-station gym equipped by Precor; a 25m x 12.5m swimming pool with moveable floor; a dance and fitness studio; and a meeting/spin studio.

A full-sized sports hall capable of hosting football, basketball, volleyball and badminton has also been created at the venue, along with changing facilities and a café.

Dublin Lord Mayor Gerry Breen, who officially opened the venue, said: "Swan Leisure is a wonderful addition Rathmines and



The swimming pool at the Swan Leisure facility in Rathmines, Dublin

surrounding areas. This facility is a credit to the hard work, vision and cooperation between Dublin City Council, local elected representatives and the local community."

Funding for the leisure centre element of the Rathmines Square development has been provided by the local authority.

## £8m leisure facility planned for Girvan's harbourside

PETE HAYMAN

A new £8m leisure facility is being planned for a harbourside site in Girvan to help enhance local tourism and leisure opportunities.

The proposed venue – backed by South Ayrshire Council – will include a swimming

pool; a fitness suite; and an outdoor learning and activity centre with climbing wall.

A multi-purpose space for community events; a restaurant; and a viewing area also form part of the proposals, which are designed to act as a catalyst for further regeneration.

## Improved facilities for Blackpool facility

PETE HAYMAN

Blackpool's Moor Park Health and Leisure Centre is to benefit from improved facilities as part of a major refurbishment led by the local authority.

The venue's swimming pool has closed for a 16-week period to allow work to take place, with the new-look complex due to reopen in April.

Blackpool Council has secured external funding to help finance the improvements, which will allow for a revamp of changing facilities and provision for disabled users and families.

When complete, the new-look Moor Park Health, Leisure and Learning Centre will feature a 44-station fitness suite; a spinning studio; and an exercise class studio.



Moor Park Health and Leisure Centre is undergoing a refurbishment

A four-court sports hall; a 25m swimming pool and learner pool; a library and learning centre; GP surgeries; and a chemist will also be on offer at the Moor Park venue.



# £3.4m Donyngs revamp to start

PETE HAYMAN

A £3.4m refurbishment of Donyngs Recreation Centre in Redhill, Surrey, is to commence later this month – five months after the scheme was originally due to begin.

Reigate and Banstead Borough Council (RBBC) is working with operator Nuffield Health, with the local authority contributing £2m.

The scheme will include an enlarged 100-station gym with free weights area; a Kids Gym for 11-16-year-olds; and a purpose-built children's play facility. An enlarged dance/fitness studio; treatment rooms; and improvements to the pool area are also proposed.

Donyngs' existing gym will open until its new replacement opens in spring, while the later stages of the work will require phased closures to be announced in due course.



The long-awaited overhaul of Donyngs Recreation Ground is to start

RBBC executive member for leisure and wellbeing Adam De Save said: "One of the aims of the refurbishment is to make the centre even more family orientated. The council and Nuffield Health regret the late start to the project but we are committed to getting the best value from our building contracts."

## Gyms 'too expensive' for third of Britons

TOM WALKER

A third of Britons are shunning health clubs because of the financial cost, a survey for World Cancer Research Fund (WCRF) has found.

According to the YouGov survey, 30 per cent of participants revealed that the cost of gyms and leisure centres was preventing them from being more physically active.

Younger people are most likely to steer clear of gyms due to their expense, as 42 per cent of 18 to 24-year-olds mentioned financial cost as a reason for not being more physically active. This compares to 19 per cent in the oldest age group, the over-55s.

Dr Rachel Thompson, Deputy Head of Science at WCRF, said: "It is a concern that so



Health clubs have been accused of being too expensive by a charity

many people feel that financial cost is stopping them being more physically active. It is important for us to get the message across that being physically active does not have to mean signing up at expensive gyms or leisure centres."

## PayasUgym concept to launch

TOM WALKER

A new service that allows users to visit a number of gyms around the Greater London area is set to launch later this month.

PayasUgym, the brainchild of entrepreneurs Neil Harmsworth and Jamie Ward, is an online

gym network which utilises smartphone technology for customers to locate a gym, book a session and pay per each visit.

The service has established a network of more than 100 gyms taking part in the scheme. Nearly all the clubs are in Greater London.



Improve Service  
Quality and  
Reduce Cost

A contradiction  
surely?  
Not necessarily.

- Are you Committed to Excellence?
- Does your quality improvement programme need a fresh impetus?
- Are you getting value from your quality measurement and accreditation?

The British Quality Foundation (in partnership with QLM) Levels of Excellence Programme provides an improvement and measurement framework using the EFQM Excellence Model to underpin business culture and improvement processes.

The first step in this process is Committed to Excellence (C2E) accreditation. C2E is an internationally recognised, organisation wide improvement and accreditation process that is significantly cheaper than some quality accreditation schemes, but crucially can provide a fresh impetus in the pursuit of service excellence.

To find out how and to download a free leisure centre mystery shopper checklist go to [www.qlmconsulting.co.uk](http://www.qlmconsulting.co.uk)

Quality Leisure Management Ltd  
tel: 01451 861084



Paul Faulkner led the refurbishment of the spa

## New-look spa unveiled at The Athenaeum

PETE HAYMAN

The Athenaeum in London, has unveiled its new-look spa following an overhaul led by interior designer Paul Faulkner.

An enlarged treatment room, a wet area and a relaxation room are among the new facilities at the Mayfair hotel's spa, which is open to guests and visitors.

The Athenaeum has also announced a partnership with skin care brand REN to create bespoke treatments, which include the Moroccan Rose Ritual – inspired by shiatsu and naturopathy.

## Barceló launches new Buxton spa facility

TOM WALKER

Spain-based hotel operator Barceló Hotels and Resorts has unveiled its new look beauty spa at Barceló Buxton Palace Hotel in Buxton, Derbyshire.

The hotel's existing spa has been redesigned and redeveloped and now includes two double treatment rooms, two single treatment rooms, a waiting area, a Decléor retail area and a relaxation room.

The historic Barceló Buxton Palace Hotel dates back more than 140 years and boasts 122 bedrooms and suites.

## Elemis and Bannatyne renew contract

TOM WALKER

UK-based product house Elemis and spa operator Bannatyne Group have signed a new agreement which will see Elemis products being used at Bannatyne spas for the next three years.

The new deal follows on from a five-year deal that was signed in 2005.

Noella Gabriel, director of UK sales at Elemis, said: "Elemis and Bannatyne have a very similar energy and business integrity and this is why we work so well together."

## Ashdale Hotels appoints Imagine Spa

TOM WALKER

Yorkshire-based luxury hotel operator Ashdale Hotels has appointed Imagine Spa Management to operate two of its day spas in the UK.

The deal will see Imagine take over the management of spas at Hazlewood Castle near Leeds and Dower House at Knaresborough, increasing the number of spas operated by Imagine Spa Management to 15. Imagine is part of the Fitness Express group.

The spa at Hazlewood Castle features four treatment rooms – located in the original stable block – while the spa at The Dower House is still under construction.

Due to open this month, the spa will boast four treatment rooms, hammam, aromatherapy



Imagine will take over the running of the spa at Hazlewood Castle

bath, thermal suite, relaxation room and spa dining area. Imagine's managing director Dave Courteen said: "This is the third spa project in which we have invested."

## New spa for Lancashire leisure centre

PETE HAYMAN

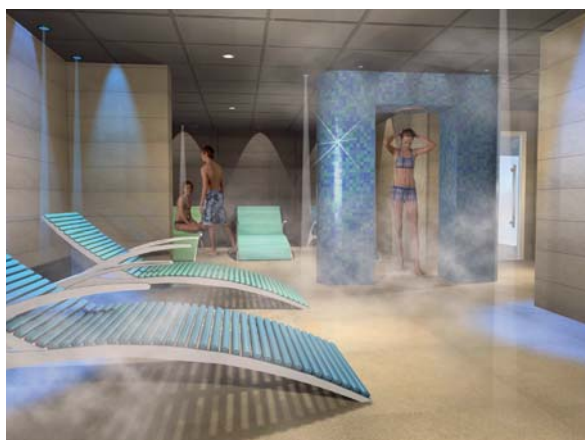
Hyndburn Leisure Trust (HLT) has announced that a new health spa is to open at Mercer Hall Leisure Centre in Great Harwood, Lancashire.

Due to open on 17 January, the new spa – funded by Hyndburn Borough Council – will offer guests an "all-in-one relaxation experience".

Facilities will include a glass-fronted steamroom; a Swedish sauna; a 78sq m (840sq ft) relaxation area and a monsoon shower. New male and female changing areas will also be included at the new spa, which will be available to members and casual users.

The new facility will complement Mercer Hall's existing offer, which includes a gym; a swimming pool; and studio facilities.

HLT chief executive Michael Hunt said: "The investment by Hyndburn Borough Council has



An artist's impression of Mercer Hall Leisure Centre's new spa facilities

enabled the Leisure Trust to modernise the building and transform it into a completely new and revitalised venue.

"Local residents can now be proud that they now have a facility on their doorstep that is on a par with private health clubs found in cities across the country at an affordable price."

## Second Aqua Sheko site opens in London

TOM WALKER

Spa operator Aqua Sheko has officially opened its second site in Soho, London.

Originally founded by entrepreneur Karen Ho, Aqua Sheko is based on a fish therapy concept and each of the spa's treatments involves

the use of omnivorous garra rufa fish in order to gently remove dead skin.

The treatments are usually limited to foot and hand treatments, but the Aqua Sheko also offers guests the option of submerging themselves in full body tanks full of fish.



# The New SpaFinder iPhone App

## Search, Book, Spa!



Available on the  
**App Store**

Powered by  
**SPABOOKER**  
A DIVISION OF SPAFINDER

Connecting over 5,000 spas with spa-goers around the world

Thanks to SpaBooker's patent-pending technology, consumers worldwide can now find spas, check deals and book appointments 24/7. SpaBooker is the fastest-growing spa management software company, and is the only solution that also brings you new customers.

**For a free download, visit the iPhone App Store!**

To learn more, visit [www.Spa-Booker.com](http://www.Spa-Booker.com) or contact: **Tracey Solanas**, [tracey.solanas@spa-booker.com](mailto:tracey.solanas@spa-booker.com)

### Bannockburn visitor centre contract awarded

PETE HAYMAN

York-based exhibition design company Bright White has been chosen to design and create the £5m visitor experience at the historic Battle of Bannockburn site.

Chris Walker, managing director of Bright White, told *Leisure Opportunities* that the design is currently a closely-guarded secret but added that it will be "like nothing seen or heard before" in the UK.

The centre – due to open in 2014 – is being developed in partnership by Historic Scotland and the National Trust.



Bromley Museum is set to undergo an overhaul

### Bromley Council to bid for museum Lottery funding

PETE HAYMAN

Bromley Council has agreed to submit a first stage application to the Heritage Lottery Fund (HLF) as part of efforts to finance an expansion of Bromley Museum.

The submission will include plans for the extension of visitor facilities into the empty Orpington library building and repairs to the current Grade II\*-listed building.

Redevelopment proposals also include the improvement of exhibition spaces for local artefacts and the expansion of the attraction's learning facilities.

### Record numbers for Historic Scotland sites

PETE HAYMAN

Historic Scotland has announced that its attractions had their 'best season on record' after welcoming more than 2.4 million visitors between 1 April and 30 September.

The agency, which manages sites including Edinburgh, Stirling and Urquhart Castles, saw visitor numbers for September increase 12 per cent on the previous year.

Culture minister Fiona Hyslop said: "These figures are particularly impressive given the widespread impact on the tourism industry of the ash cloud in April."

## OPLC in Orbit operator search

TOM WALKER

The Olympic Park Legacy Company (OPLC) has launched a formal expressions of interest process for operating the Anish Kapoor and Cecil Balmond-designed ArcelorMittal Orbit.

Located between the Olympic Stadium and the Aquatics Centre, the sculpture won the competition to create an accessible piece of art for the Olympic Park. It will be operated as a visitor attraction both during the 2012 Games and in legacy mode.

The £22.8m, 114m (374ft)-tall sculpture will have two observation floors and the chosen operator will be expected to run the venue and be responsible for ticketing, marketing, events, hospitality and catering on behalf of OPLC.

It is hoped the venue will attract up to one million visitors in its first year, generating



The new attraction is to be sited adjacent to London's Olympic Stadium

around £10m in revenue through ticket sales, catering, merchandise and private functions.

OPLC is expected to appoint an operator by June, with the aim of managing the fit out of the venue. The company, which will be responsible for the Olympic Park in legacy mode, aims to secure a 10-year operating contract.

## Wrexham 'landmark' tower plans deferred

PETE HAYMAN

Plans for a new 64m (208ft) Welsh dragon landmark on a site between Llangollen and Wrexham have been deferred by local councillors.

Businessman Simon Wingett is behind the Waking The Dragon scheme, which also incorporates a 2,150sq m (23,142sq ft) cultural centre and landscaped gardens.

The 23.5m (77.1ft) dragon sculpture will be situated on top of a 41.5m (136.2ft) concrete tower, which will feature a public viewing platform.

A planning application was submitted to the local authority in July last year, although councillors have deferred a decision on the project to obtain more information regarding the project's business case and traffic issues.



The planned attraction is designed to act as a 'gateway' to North Wales

According to a Wrexham Council spokesperson, planning officials are now set to meet with the applicant in order to resolve outstanding issues. The proposals could then go back before councillors as early as next month.

## Malcolm Fraser Architects to lead Lews Castle team

PETE HAYMAN

Edinburgh-based Malcolm Fraser Architects is to lead a design team for the Lews Castle and Museum nan Eilean project near Stornoway.

Comhairle nan Eilean Siar - Western Isles Council is behind the proposals for the historic

site, which is also being earmarked to incorporate a new 'hospitality venue'.

Simpson and Brown Architects will also be involved with the scheme, which is to receive funding from both the council and the Heritage Lottery Fund.



# ACW funding strategy revealed

PETE HAYMAN

More than 70 Welsh arts groups will share more than £24.25m in 2011-12 under the Arts Council of Wales' (ACW) new funding strategy.

It follows the news that ACW will see its programme funding cut by 4 per cent in the coming three years, while its running costs will be reduced by 12 per cent.

Five groups have been named as regularly funded organisations (RFO) for the first time after an overhaul of the ACW's RFO portfolio.

NoFit State; Sinfonia Cymru; Theatr Ffynnon; Canolfan Gerdd William Mathias; and Independent Ballet Wales are the five new RFOs. Additional funding will be provided for community and performing dance artists to perform their work, as well as groups that aim to inspire and engage more people.



IMAGE: BRIAN TARR/WNO

Welsh National Opera is one of more than 70 groups to secure funding

However, the framework is subject to confirmation in February, when the Welsh Assembly Government publishes its draft budget.

ACW chair Dai Smith said: "As a result of the strategy we've announced, most organisations will see their funding increase, and in some cases, significantly so."

## Council hands over Turner Contemporary

PETE HAYMAN

Margate's Turner Contemporary, a new £17.4m gallery dedicated to artist JMW Turner, has been officially handed over by Kent County Council following the completion of construction work on the new venue.

The trust that will operate the David Chipperfield-designed venue has now taken ownership of the building, which will open its doors on 16 April. R Durtneil and Sons built the new gallery, which will feature 750sq m (8,072sq ft) of gallery space on two floors.

## Lottery funding for four London art groups

TOM WALKER

Four arts organisations in London are to receive a share of Lottery funding from Arts Council England (ACE).

Battersea Arts Centre (£2.5m); Lyric Hammersmith (£4.5m); Whitechapel Gallery (£3.2m) and Rambert Dance Company (£7m) are the groups to benefit as part of wider nationwide action research being undertaken by ACE to explore ways of supporting income generation and improved facilities.

Battersea Arts Centre will receive funding towards a phased building programme designed by Haworth Tompkins architects. Lyric Hammersmith's grant goes towards an extension of its current home, Rambert Dance Company



Whitechapel Gallery is one of the four groups to receive ACE funding

will use its grant to help provide replacement facilities and Whitechapel Gallery has been handed a £3.2m endowment, with income to be used to ensure its long-term sustainability.

## North Tyneside project to boost wellbeing

PETE HAYMAN

A health and wellbeing programme designed to help people in North Tyneside recognise the health benefits of dance and drama has received council backing.

North Tyneside Council is supporting the Arts on Prescription project, which has been set up by community interest group Taking Part Workshops.

People suffering from stress, depression and anxiety are invited to take part in free sessions at the Linskill Centre, North Shields, and Wallsend Town Hall.



The market area will become a new public space

## Work starts on Sneinton Market regeneration

PETE HAYMAN

Nottingham City Council has announced the start of work to transform Sneinton Market into a new public space.

The proposed new space will provide a venue for events, performances and festivals and it is hoped the project will act as a catalyst for further regeneration, such as the planned relocation of Dance4.

The arts organisation is currently planning to develop a new 'international centre for 21st century dance', which will include choreographic studios.

## National treasures saved for public collections

PETE HAYMAN

More than £10m worth of artworks – such as rare Thomas Hardy typescripts – will remain in public collections after being saved from export.

Watercolours from the 1839 Eglinton Tournament and a Welsh landscape painting by William Dyce are also among the national treasures to be retained.

The works that were saved were revealed in the 56th annual report of the Reviewing Committee on the Export of Works of Art and Objects of Cultural Interest.

## Creating a framework for job creation



### UFI IBRAHIM

is chief executive officer of British Hospitality Association

**T**he Prime Minister's jobs summit with executives from leading companies emphasised the importance of the hospitality industry as a jobs creator.

In the BHA's report, which we published in October – Creating Jobs in Britain – A Hospitality Economy Proposition, we said that hospitality could create 236,000 jobs by 2015 providing the right supportive framework was in place. This is the time to make sure that that framework is established.

It's critically important that government realises that creating these jobs cannot be achieved alone. We need a positive partnership with government that recognises that policy and regulations can make or break this objective. Past governments have just not recognised the industry's job-creating potential. For example, with the rate of VAT now at 20 per cent, the British hospitality industry is operating at an even greater disadvantage to its European competitors than before, most of whom have reduced rates of VAT for hospitality services.

We are very anxious to collaborate with government on a joint study on the economic impact of the rate of VAT on hotel accommodation, visitor attractions and restaurant meals.

I'm sure that the evidence gathered from such a study would show that lowering the rate of VAT will stimulate greater demand from both the home and overseas markets, boost growth in the industry generally and help generate those 236,000 new jobs.

This is only one area in which we want to collaborate with government. Reducing the regulations that affect businesses and encouraging banks to take a more understanding approach to lending are critical to the creation of new jobs. Needless regulations are costly and time-consuming to implement while lack of funding holds back growth. We have called for a cross-cabinet committee for hospitality and tourism to coordinate policy across Whitehall in order to get the government to provide the right framework for industry to be able to create the jobs and skills that the country so urgently needs.

## HOTELS

# Sahara acquires Park Lane hotel

PETE HAYMAN

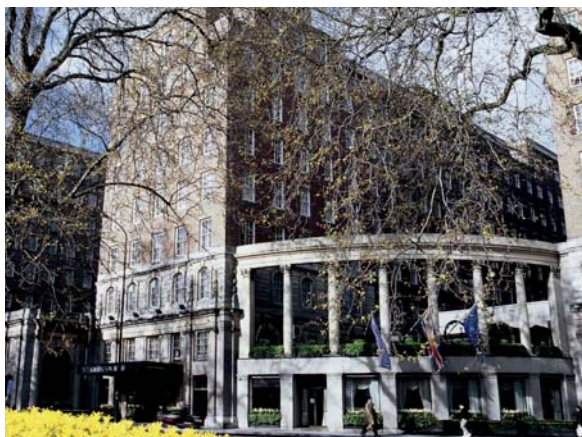
India-based conglomerate Sahara India Pariwar has completed the acquisition of the iconic Grosvenor House Hotel in Mayfair, London.

Located on Park Lane, the property has been sold by The Royal Bank of Scotland Group for a reported £470m.

Grosvenor House Hotel is currently run by Marriott International under the JW Marriott brand, but is now set to be jointly run with Sahara India Pariwar.

In addition to the 420 bedrooms and 74 suites, the property features 4,000sq m (43,056sq ft) of meeting space and the Great Room banqueting space.

Sahara India Pariwar chair Subrata Roy Sahara said: "This acquisition is a part of the major expansion plans of the group. In addition to the acquisition of Grosvenor House,



Sahara India Pariwar plans to joint run the property with JW Marriott

London will be the gateway for Sahara to introduce some of its new business ventures."

It was also reported that Sahara India Pariwar is to add a restaurant, a nightclub, a spa and a swimming pool to the Grosvenor House Hotel's facilities. Richard Lewczynski of Blandford Goldsmith brokered the deal.

## Palm Holdings in Edinburgh hotel purchase

PETE HAYMAN

Palm Holdings has bought two Edinburgh hotels from Town House Company (THC) for an undisclosed sum.

Property advisers Colliers International completed the sale on behalf of THC, with

Palm Holdings expanding its presence in the city to four properties. The Howard – an 18-room boutique hotel with planning consent for four apartments – and The Channings – a 41-room town house property – had asking prices of £3.5m and £5.5m respectively.

# Akkeron completes Forestdale Hotels deal

TOM WALKER

Akkeron Hotels Group has acquired privately-owned Forestdale Hotels for an undisclosed sum. The deal includes Forestdale's 18 hotels in the UK and increases the number of properties in Akkeron's portfolio to 26.

The acquisition was funded with a mixture of equity, deferred consideration and a new £32m, 18-year loan provided by Lloyds Banking Group. Forestdale's collection of hotels spread across England and the company has an annual turnover of £30m.

Matthew Welbourn, managing director of Akkeron Hotels, said: "While the trading outlook for regional hotel operators in the UK remains challenging, we continue



Burley Manor Hotel, one of the 18 properties acquired by Akkeron

to see exciting opportunities to acquire high quality hotel assets that will benefit from capital investment and the operational expertise that an operator of scale can provide."



# HAS YOUR CLUB GOT THE FACTOR?



## 5 REASONS TO SIGN UP!

ATTRACT NEW MEMBERS

ENCOURAGE MEMBER RETENTION

ADD A NEW DIMENSION TO YOUR  
LOCAL MARKETING

MOTIVATE YOUR STAFF

FIND OUT WHAT MEMBERS  
REALLY THINK

**...AND IT'S FREE  
TO ENTER!**

Official Media Partner

**health club**  
management

THE ONLY AWARDS VOTED  
FOR BY MEMBERS

**REGISTER  
TODAY**

[www.healthclubawards.co.uk](http://www.healthclubawards.co.uk)

## Inbound tourism entering a period of great opportunities



**SANDIE DAWE**  
is chief executive  
of VisitBritain

**W**e're looking forward to an exciting and challenging 2011. The eyes of the world will be on Britain as we host the Royal Wedding, and momentum will build as we near the 2012 Olympic Games. We plan to roll out our new campaign this spring with our industry partners, inviting the world to visit Britain.

Our new research tells us that Britain will attract 300,000 more visitors in 2011 as confidence among overseas tourists continues to rise despite global financial uncertainties. The number of inbound travellers is expected to be 30 million – a rise of 1 per cent – in the coming year. The amount they spend in this country is set to increase by 2 per cent in nominal terms to £17.2bn, up £0.34bn. This figure is considerably lower in real terms than the best year for inbound visitor spend (once adjusting for inflation), which remains 2006 with spending of £18.4bn at 2010 prices.

This gradually improving picture emerges in the latest of our foresights of future prospects. It shows that the global economic recovery is strong across much of Asia but it remains fragile in many parts of Europe and North America – two regions that account for 85 per cent of all international visits to Britain. That means pressure will grow on travellers' disposable income during 2011, as global commodity prices rise and taxes increase in many parts of the world. On the positive side, the prolonged highly competitive value of sterling continues to make a trip to Britain very good value.

So what are we actually doing to market Britain in 2011? Britain is about to enter a period of exceptional opportunity for tourism marketing, thanks to the Royal Wedding in 2011, the Queen's Diamond Jubilee in 2012 and the Olympic Games. VisitBritain intends to leverage these events with the roll out of a global marketing campaign, match funded by the industry that will revitalise the image of Britain in the core markets of North America and near Europe and build awareness of all Britain has to offer in developing tourism markets such as India and China. So an exciting year all round!

## TOURISM

# Private sector boosts new fund

PETE HAYMAN

A new tourism marketing fund is 'on course' to reach £100m after private sector companies pledged to match public investment.

British Airways; DFDS (ferries); lastminute.com; P&O; and Radisson Edwardian have all agreed to back the fund, which has received £50m from tourism agency VisitBritain.

It is hoped the four-year campaign will help create 50,000 new jobs and attract 1 million extra visitors a year.

Events such as this year's Royal Wedding; the Queen's Diamond Jubilee; and the 2012 London Olympic and Paralympic Games are expected to boost tourism.

Prime Minister David Cameron said: "Last year we challenged British businesses to help us put together the best tourism marketing campaign ever for Britain. The response has



IMAGE: VISIT BRITAIN IMAGES/ERIC NATHAN

The new tourism fund is designed to attract an extra 1 million visitors

been magnificent, with pledges of cash and kind from companies that mean we are well on the way to our target."

Culture secretary Jeremy Hunt added: "British companies have dug deep to back us in promoting this idea. And I hope that others will pitch in too."

## Cash boost for Highlands and Islands tourism

PETE HAYMAN

Tourism schemes are among those set to benefit from £18m worth of Scottish Government investment in the Highlands and Islands.

Enterprise, energy and tourism minister Jim Mather said the funding aims to create jobs

and strengthen economic recovery both in the region and across the country as a whole.

Meashow Project Orkney; Sumburgh Head Restoration and Development Project; and the Highlanders Museum Redevelopment Project are all among the recipients of funding.

## Inbound tourism to grow by 1 per cent

TOM WALKER

The number of inbound visitors to the UK will increase by around 300,000 during 2011, an increase of 1 per cent.

According to latest figures from VisitBritain, the number of inbound trips will reach 30 million, as confidence among overseas tourists increases amid global uncertainties.

The amount tourists spend in the country is set to increase by 2 per cent to £17.2bn. The figure is considerably lower in real terms than the £18.4bn in 2006 for inbound visitor spend.

During 2011, VisitBritain is expected to invest heavily in promoting three forthcoming events – The Royal Wedding, the Queen's Diamond Jubilee and London 2012.



IMAGE: VISIT BRITAIN IMAGES/GRANT PRITCHARD

VisitBritain figures found that inbound visitor numbers will increase

Sandie Dawe, VisitBritain's chief executive, said: "We plan to roll out our new campaign this spring with our industry partners, inviting the world to visit Britain" (see column, left).





## leisure media STUDIO

### Industry-leading marketing and design services

With more than 30 years' experience, **leisure media studio** will work with you to create bespoke print and web solutions to power your marketing

- ▶ Web design
- ▶ Email marketing
- ▶ Contract publishing
- ▶ Graphic design
- ▶ Digital turning pages
- ▶ Image retouching
- ▶ Illustration
- ▶ Advertising design
- ▶ Direct mail
- ▶ Print

LET US QUOTE YOU

**Contact Tim Nash**  
Tel +44 (0)1462 471917  
[timnash@leisuremedia.com](mailto:timnash@leisuremedia.com)

#### Sunderland City Council Management of Council Golf course

Sunderland City Council is seeking to grant a lease for the management, operation and maintenance of Elemore Golf Course.

The Council is looking for an innovative and motivated operator to manage the golf course under a long term lease of at least 25 years, who can further increase golf participation from existing audiences, ensure continuity for current members and widen access to golf for all people of the city.

The city has changed significantly in recent years and the transformation of the city centre, riverside and coalfield areas has been striking. Sport has a high profile including recent developments such as the Sunderland Aquatic Centre, Silksworth and Hetton Community Pools and a major investment programme in play, with 28 new sites and a city Adventure Centre.

Elemore Golf Course was established in the 1990's approximately mid-way between Sunderland and Durham and is an attractive 18 hole course with associated clubhouse and parking.

The course provides the only opportunity to access a public pay & play golf course in Sunderland and the clubhouse currently offers a licensed bar and lounge area, open daily from 10am and serving bar food, male and female changing areas, a small pro-shop and parking for approximately 60 cars.

Parties who wish to be considered will be sent a detailed specification and will be required to complete a formal submission and questionnaire, which must be returned by Friday 25 February 2011.

The successful company will be required to demonstrate that it has a sustainable business model for the course which meets the required objectives and provides the Council with a no cost or income generating service.

For further information please contact Michael Whitaker, Senior Valuation Surveyor, Property Services, Sunderland City Council, 50 Fawcett Street, Sunderland, SR1 1RF. [Michael.Whitaker@sunderland.gov.uk](mailto:Michael.Whitaker@sunderland.gov.uk) direct dial: (0191) 561 2672.

**Dave Smith, Chief Executive**  
Civic Centre, Burdon Road,  
Sunderland SR2 7DN.

**Sunderland**  
City Council

## WATERSIDE POOL, RYDE, ISLE OF WIGHT EXPRESSIONS OF INTEREST SOUGHT

**25 metre indoor swimming pool**

**Esplanade location**

**Close to town amenities and mainland travel connections**



Transfer to be by way of a long-term ground lease with the successful applicant entering into a covenant to operate the site as a public swimming pool for at least 21 years.

Deadline for expressions of interest: **11 February 2011**

For further information, contact: [alex.minns@iow.gov.uk](mailto:alex.minns@iow.gov.uk)  
or telephone: **(01983) 823846**



A rooftop terrace is planned for the lowered site

## Interim scheme for Bournemouth site

PETE HAYMAN

Bournemouth Borough Council (BBC) has submitted its plans to reduce the height of the Waterfront building and create a new rooftop terrace.

It follows the council's decision to pursue an interim scheme for the property, which aims to stimulate interest in the future development of a new leisure attraction.

In line with BBC's planning brief, the back of the property will be less than half the existing height to provide clearer views of the Purbeck hills from Bath Hill.

## Delancey completes Blade portfolio acquisition

PETE HAYMAN

Investment advisor Delancey has acquired the Propinvest Group's Blade portfolio, which boasts a number of leisure assets.

The group teamed up with Royal Bank of Scotland on the deal, which includes Newcastle's Gate Leisure Centre - comprising a 12-screen cinema and a casino.

Total Fitness clubs in Bootle, Whitefield and Huddersfield and the East Kilbride Shopping Centre - including a cinema and ice rink - have also changed hands as part of Delancey's acquisition.

## Further legal challenge to Preston development

PETE HAYMAN

A multi-million pound regeneration scheme in the centre of Preston is to face a further legal challenge from Blackburn with Darwen Borough Council (BDBC).

The mixed-use Tithebarn development was approved by communities secretary Eric Pickles in November following the conclusion of a public inquiry.

Preston City Council, which is working alongside developer Lend Lease on the scheme, has expressed disappointment at BDBC's decision to contest the ruling.

## Qatari Diar submits Chelsea Barracks plans

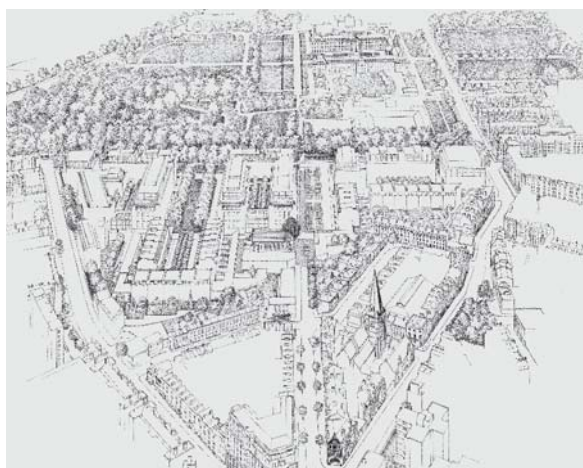
PETE HAYMAN

Outline plans for a major redevelopment of the 12.8-acre (5.2-hectare) Chelsea Barracks site in Westminster, London, have been submitted to Westminster Council.

Qatari Diar Real Estate Investment Company - through its subsidiary Project Blue (Guernsey) - aims to transform the former barracks, which shut to the public more than 150 years ago.

Plans drawn up by Squire and Partners; Dixon Jones; and Kim Wilkie include a boutique hotel, a sports facility and some of the first gardens to be created in Central London for more than 100 years.

A spokesperson for Qatari Diar said: "The sensitive regeneration of this site will deliver



How the Chelsea Barracks site could look under Qatar Diar's proposals

an authentic and sustainable new neighbourhood for London, reflecting the traditions, culture and diversity of this historic area of the capital."

## 2012 park operator shortlist revealed

TOM WALKER

The shortlist of private sector organisations hoping to acquire and manage the Olympic Village after the 2012 Games has been announced.

The nine groups - most of them partnerships - which will be invited to submit detailed proposals to the Olympic Delivery Authority (ODA) include Galliard Homes; Wellcome Trust; and Delancey and Qatari Diar.

Dorrington and Pinnacle Capital; Grainger and Moorfield Group; Hutchison Whampoa Limited; Le Frak Organization, Aviva and J.P. Morgan; London and Stamford Property; David Wilson and Sir Robert McAlpine; and the William Pears Group and Urban Splash have also been shortlisted and will be sent detailed information, allowing them to submit formal offers in the spring.



Nine bidders are in the running to take over London's Olympic Village

David Higgins, chief executive of the ODA, said: "Securing a shortlist with many of the leading property investors and managers both in the UK and around the world takes us an important step towards ensuring the Olympic Village becomes one of the strongest legacies from the Games."

## Local authority to hold Tropicana exhibition

PETE HAYMAN

North Somerset Council (NSC) is to hold a public exhibition to allow residents in Weston-super-Mare to comment on Havard Tisdale and the Nightingale Group's rival proposals for the redevelopment of the Tropicana centre.

Plans drawn up by both firms will be on show at the events at the Winter Gardens on 21 and 22 January. NSC leader Nigel Ashton said: "What local people tell us at the exhibition, or through their online comments, will be passed on to both bidders."



## Hospitality & Leisure

Specialist Property Services

**Valuations, Sales, Aquisitions, Rent Reviews, Expert Witness.**

**Contact:** Colin White  
[colin.white@edwardsymmons.com](mailto:colin.white@edwardsymmons.com)

London • Bristol • Leeds • Liverpool • Manchester • Plymouth • Southampton

**Edward Symmons** **020 7344 4500**  
[www.edwardsymmons.com](http://www.edwardsymmons.com)

Rating • Planning & Site Licensing

**CHARLES F. JONES & Son LLP**  
CHARTERED SURVEYORS

**Leading Professional Advisors to the Leisure Industry for over 70 years**

**Charles F Jones & Son LLP**  
**01244 328141** [www.cfj.co.uk](http://www.cfj.co.uk)  
16 Grosvenor Court Foregate Street Chester CH1 1HN

**Valuations • Sales & Acquisitions**

UK and international property experts covering all sectors of the leisure and hotel industry

**Alan Plumb**  
+44 (0) 1865 269000  
[aplumb@savills.com](mailto:aplumb@savills.com)  
[savills.co.uk/leisure](http://savills.co.uk/leisure)

**savills**  
[savills.com](http://savills.com)

**HL HUMBERTS LEISURE**

specialist professional leisure property expertise

- Sales
- Planning
- Purchases
- Rent reviews
- Arbitrations
- Rating
- Lease renewals
- Expert witness
- Valuations
- Consultancy
- Viability & feasibility
- Funding

London +44 (0)20 7629 6700 South +44 (0)1962 835 960  
North +44 (0)1756 799 271 South East +44 (0)1273 325 911  
South West & Wales +44 (0)29 2022 6892

[www.humberts-leisure.com](http://www.humberts-leisure.com)

## LEISURE PROPERTY FORUM CORPORATE MEMBERS' DIRECTORY



For membership information  
please contact Michael Emmerson  
[info@leisurepropertyforum.org](mailto:info@leisurepropertyforum.org)

[www.leisurepropertyforum.org](http://www.leisurepropertyforum.org)

**3D Reid**  
Tel: 0121 212 2221  
[www.3dreid.com](http://www.3dreid.com)

**Alan Conisbee & Associates Ltd**  
Tel: 020 7700 6666

**Ashurst LLP**  
Tel: 020 7638 1111  
[www.ashurst.com](http://www.ashurst.com)

**BCI Design**  
Tel: 020 7021 0217  
[www.bci-design.com](http://www.bci-design.com)

**Berwin Leighton Paisner**  
Tel: 020 7760 1000  
[www.blplaw.com](http://www.blplaw.com)

**Brook Street des Roches LLP**  
Tel: 01235 836614  
[www.bsdr.com](http://www.bsdr.com)

**CB Richard Ellis Ltd**  
Tel: 020 7182 2197  
[www.cbre.com](http://www.cbre.com)

**CgMs Consulting**  
Tel: 020 7583 6767  
[www.cgms.co.uk](http://www.cgms.co.uk)

**Chase & Partners LLP**  
Tel: 020 7389 9494  
[www.chaseandpartners.co.uk](http://www.chaseandpartners.co.uk)

**Christie + Co**  
Tel: 0113 389 1700  
[www.christiecorporate.com](http://www.christiecorporate.com)

**CMS Cameron McKenna LLP**  
Tel: 020 7367 2195  
[www.cms-cmck.com](http://www.cms-cmck.com)

**Colliers International UK plc**  
Tel: 020 7487 1710  
[www.colliers.com/uk](http://www.colliers.com/uk)

**Cushman & Wakefield LLP**  
Tel: 020 7152 5209  
[www.cushwake.com](http://www.cushwake.com)

**Davenport Lyons**  
Tel: 020 7468 2600  
[www.davenportlyons.com](http://www.davenportlyons.com)

**Davis Coffey Lyons**  
Tel: 020 7299 0700  
[www.coffeygroup.co.uk](http://www.coffeygroup.co.uk)

**DKA Associates**  
Tel: 020 7034 5267  
[www.dkallp.com](http://www.dkallp.com)

**DLA Piper Rudnick**  
Gray Cary UK LLP  
Tel: 020 7796 6155  
[www.dlapiper.com](http://www.dlapiper.com)

**E3 Consulting Limited**  
Tel: 0845 230 6450  
[www.e3consulting.co.uk](http://www.e3consulting.co.uk)

**Edward Symmons LLP**  
Tel: 020 7344 4500  
[www.edwardsymmons.com](http://www.edwardsymmons.com)

**Finers Stephens Innocent LLP**  
Tel: 020 7344 5312  
[www.fsilaw.com](http://www.fsilaw.com)

**Fladgate LLP**  
Tel: 020 3036 7000  
[www.fladgate.com](http://www.fladgate.com)

**Fleurets Limited**  
Tel: 020 7280 4700  
[www.fleurets.com](http://www.fleurets.com)

**Gala Leisure Limited**  
Tel: 0115 948 5370  
[www.galacoral.com](http://www.galacoral.com)

**Genting Casinos**  
Tel: 0118 939 1811  
[www.gentingcasinos.co.uk](http://www.gentingcasinos.co.uk)

**Gerald Eve**  
Tel: 020 7333 6374  
[www.geraldeve.com](http://www.geraldeve.com)

**Grant Thornton UK LLP**  
Tel: 01753 781167  
[www.uk.gt.com](http://www.uk.gt.com)

**Hadfield Cawkwell**

**Davidson Limited**  
Tel: 0114 266 8181  
[www.hcd.co.uk](http://www.hcd.co.uk)

**Hermes Real Estate**

**Investment Management Ltd**  
Tel: 020 7680 2145  
[www.hermes.co.uk](http://www.hermes.co.uk)

**Humberts Leisure**  
Tel: 020 7629 6700  
[www.humberts-leisure.com](http://www.humberts-leisure.com)

**Indigo Planning**  
Tel: 020 8605 9400  
[www.indigoplanning.com](http://www.indigoplanning.com)

**Jones Lang Lasalle**  
Tel: 020 7399 5326  
[www.joneslanglasalle.co.uk](http://www.joneslanglasalle.co.uk)

**Kerry London Ltd**  
Tel: 020 7623 4957  
[www.kerrylondon.co.uk](http://www.kerrylondon.co.uk)

**King Sturge LLP**  
Tel: 020 7087 5500  
[www.kingsturge.com](http://www.kingsturge.com)

**Lawrence Graham LLP**  
Tel: 020 7379 0000  
[www.lg-legal.com](http://www.lg-legal.com)

**Legal & General Investment Management Holdings Ltd**  
Tel: 020 3124 2763  
[www.lgim.co.uk](http://www.lgim.co.uk)

**Leisure Opportunities**  
Tel: 01462 471 905  
[www.leisureopportunities.co.uk](http://www.leisureopportunities.co.uk)

**Matthews & Goodman**  
Tel: 020 7747 3157  
[www.matthews-goodman.co.uk](http://www.matthews-goodman.co.uk)

**Mayer Brown Rowe & Maw LLP**  
Tel: 020 7782 8890  
[www.mayerbrownrowe.com](http://www.mayerbrownrowe.com)

**Merlin Entertainments**  
[www.merlinentertainments.biz](http://www.merlinentertainments.biz)

**MWB Management Services Ltd**  
Tel: 020 7706 2121  
[www.mwb.co.uk](http://www.mwb.co.uk)

**Odeon & UCI Cinemas Ltd**  
Tel: 0161 455 4000  
[www.odeonuk.com](http://www.odeonuk.com)

**Olswang**  
Tel: 020 7067 3114  
[www.olswang.com](http://www.olswang.com)

**Pinders**  
Tel: 01908 350500  
[www.pinders.co.uk](http://www.pinders.co.uk)

**Reed Smith LLP**  
Tel: 020 3116 3000  
[www.reedsmith.com](http://www.reedsmith.com)

**Roberts Limbrick Ltd**  
Tel: 03333 405500  
[www.robertslimbrick.com](http://www.robertslimbrick.com)

**Royal Bank of Scotland plc**  
Tel: 020 7672 1752  
[www.rbs.co.uk/corporate](http://www.rbs.co.uk/corporate)

**RTKL-UK Ltd**  
Tel: 020 7306 0404  
[www.rtkl.com](http://www.rtkl.com)

**Saturn Projects Limited**  
Tel: 01844 354543  
[www.saturnprojects.com](http://www.saturnprojects.com)

**Savills (L&P) Ltd**  
Tel: 020 7409 8700  
[www.savills.com](http://www.savills.com)

**Shelley Sandzer**  
Tel: 020 7580 3366  
[www.shelleysandzer.co.uk](http://www.shelleysandzer.co.uk)

**The Leisure Database Co**  
Tel: 020 7379 3197  
[www.theleisuredatabase.com](http://www.theleisuredatabase.com)

**Thomas Eggar LLP**  
Tel: 020 7932 742747  
[www.thomaseggar.com](http://www.thomaseggar.com)

**Tragus Group**  
Tel: 020 7121 6432  
[www.tragusgroup.com](http://www.tragusgroup.com)

**Vizards Wyeth Solicitors & Notaries**  
Tel: 020 7400 9999  
[www.vizardswyeth.com](http://www.vizardswyeth.com)

**Vue Entertainment Ltd**  
Tel: 020 8396 0100  
[www.myvue.com](http://www.myvue.com)

**Willmott Dixon Construction Ltd**  
Tel: 01932 584700  
[www.willmott-dixon.co.uk](http://www.willmott-dixon.co.uk)

**X-Leisure**  
Tel: 020 7592 1500  
[www.x-leisure.co.uk](http://www.x-leisure.co.uk)

Plus there are more than 70 other companies represented by individuals.

## Change, challenges and opportunities



**SAM COULSTOCK** is careers director of the Springboard Charity and Springboard UK

**T**he Springboard Charity is delighted to be working in partnership with Wilderness Scotland in delivering the Mini Matterhorn canoe and Hike challenge.

This exciting charity challenge has been created to help to raise vital funds to support the charity's work supporting young, disadvantaged and unemployed people to enter the active leisure, hospitality and tourism industries.

The charity challenge has been scheduled to commence on Friday 6 May and will finish Sunday 8 May 2011. People taking part will have the opportunity to journey through one of the most pristine wilderness areas of Scotland – Inverpolly National Nature Reserve – and climb the iconic peak of Suilven, known as “Scotland's Matterhorn”.

At a height of just 731m, this peak is prized by walkers due to its shapely features and inaccessibility.

Climbing Suilven, and pitting ourselves against one of the most expansive wilderness regions of Scotland lies at the heart of this challenge. As well as hiking up the peak, participants will learn how to canoe, camp in the wilderness for two nights and overcome some nerves on the airy summit ridge. This is an unforgettable wilderness challenge in one of Scotland's most beautiful and remote areas.

The rip highlights are, taking on the challenge of climbing Suliven the hard way! Canoeing through a stunning network of remote lochs that lie within the magnificent Inverpolly Mountains, camping below the peak of Suliven-and its isolated peak in a pristine wilderness and hiking to Suliven's lofty summit and enjoying views like no other peak in Scotland!

If you would like to be involved in this thrilling charity challenge or find out further information and register, please contact Mary Anne Lydon on 07980 836 204 or via email: [maryannel@springboarduk.org.uk](mailto:maryannel@springboarduk.org.uk).

## TRAINING

### MPs call for Future Jobs Fund rethink

PETE HAYMAN

The decision to end the Future Jobs Fund (FJF) a year early would create a gap in support for unemployed young people, according to MPs.

A report by the Work and Pensions Committee (WPC) – Youth Unemployment and the Future Jobs Fund – has outlined 23 recommendations.

Under the plans, the £1bn FJF initiative is to end in March as part of a bid to address the deficit. Among the concerns of is that there will be no support in the period between the end of the FJF and the start of the Work Programme.

The Department for Work and Pensions has also been urged to publish a full evaluation of the FJF's effectiveness.



The committee is concerned about a lack of support for young people

WPC chair Anne Begg said: “Young people, especially those lacking skills, experience and confidence, need appropriate and sometimes intensive support to find work.”

### UK's first volleyball academy opens

TOM WALKER

Volleyball England has launched the UK's first National Volleyball Academy at Loughborough College.

The National Volleyball Academy will offer players aged 16 to 17 daily training environments with the aim to create a core group of junior athletes who are prepared for international competition.

Craig Handford, head of technical development at Volleyball England said: “In order to think seriously about success at junior international level, a significant change is required in the way that we prepare our talented junior players.

“For many years the powerhouse nations of volleyball have had networks of full time training centres for junior talent development, where players are housed and educated centrally with coaching and support services.



The academy will offer volleyball players daily training environments

“Loughborough College is the best place for our National Volleyball Academy to be with the highest levels of student/athlete support and high class facilities.”

As part of the scheme, Volleyball England has confirmed Rogerio Ponticelli's appointment as its new full-time development coach.

### Hotel management salaries 'above pre-recession levels'

TOM WALKER

Median management salaries at London hotels are poised to increase by 6 per cent during 2010, according to the 2010 *London Hotel Salary and Benefits Report*, published by HVS Executive Search.

The survey includes data from 62 London hotels and shows that 2010 has been a strong year for the sector with solid improvements in rates and occupancy – resulting in healthy gains in base salary levels.



**Register of Exercise Professionals**

## Love Pilates?

Whatever your background you could turn your love for Pilates into a new and rewarding career

**Non-qualified Pilates enthusiasts**

- Train as a fully certified STOTT PILATES® matwork instructor
- Full support every step of the way

**Qualified fitness & health professionals**

- Train as a fully certified STOTT PILATES matwork or reformer instructor
- Qualification at Level 3 through CYQ (optional)
- Earn 16 REPs points per course

**STOTT PILATES®**  
merithewcorporation

0800 434 6110  
[www.activetraining.info](http://www.activetraining.info)

\*Registered trademark of Merithew Corporation, used under license. STOTT PILATES® photography © Merithew Corporation.

**“Providing training to the leisure and fitness industry in the South East”**

- First Aid Instructor (incl Level 3 PTLLS)
- Exercise and Fitness
- Apprenticeships
- Pool Plant
- Other courses available

**freedomleisure training**

Speak to us about your training needs on  
**07500 989624**

[info@freedom-leisuretraining.co.uk](mailto:info@freedom-leisuretraining.co.uk)  
[www.freedom-leisuretraining.co.uk](http://www.freedom-leisuretraining.co.uk)

# leisureopportunities

jobs & news updated daily online

Fortnightly leisure recruitment, training, property and news publication which gets you the right job or the perfect candidate for your vacancy

subscribe online:  
[www.leisuresubs.com](http://www.leisuresubs.com)

**[www.leisureopportunities.com](http://www.leisureopportunities.com)**

## RAISING THE INDUSTRY STANDARD

A New School of Excellence for a New Era for Personal Trainers to achieve and be more!

**New for 2011**

5 Week Fast-Track at Lilleshall National Sports Centre, home to the European Institute of Fitness  
OR study online on our home-study plus 10-day intensive

Become an EIF Master Trainer™ and stand out

See [www.eiflilleshall.co.uk](http://www.eiflilleshall.co.uk)  
CALL **0845 0944 007**

**be more**

## Focus Training

*Adding value to your staff*

As an employer of fitness professionals, you'll recognise the value of investment in training them to ensure they deliver the best possible service to your membership.

Fantastic professional courses available in:

- Personal Training
- Exercise to Music
- Gym Instructor
- Step
- Studio Cycling
- Nutrition & Weight Management
- GP Exercise Referral
- And much more.

Call Focus Now:  
**0333 9000 222**  
or **01204 388330**

**FOCUS TRAINING**

[www.focus-training.com](http://www.focus-training.com)

## SAY HELLO TO SOHO GYMS

A new standard in training, unique learning in a real gym to kick start your career.

- Personal Training Certificate/Diploma
- Level 2 Gym Instructor
- Many Short Courses



Contact our Academy at [academy@sohogyms.com](mailto:academy@sohogyms.com) or 08000 54 66 55 for our January courses



academy

## Health and Fitness Courses

Kingston College courses provide learners with the opportunity to study for a range of dynamic, industry recognised qualifications and workshops that will give you the edge whether working for employers or as a self employed fitness professional.

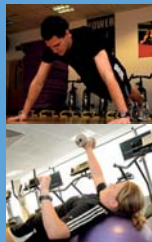
### Specific Fitness Courses

- Active IQ Level 2 Certificate in Fitness Instructing (Gym)
- Active IQ Level 3 Certificate in Personal Training
- Active IQ Level 2 Certificate in Instructing Circuit Sessions
- National Academy of Sports Medicine Qualifications (NASM)

### Specialist Workshops

- POSE Technique Running Workshops
- Enhancing Sports Performance

For more information please contact Glenn Osborn on 0208 268 2575 or [glenn.osborn@kingston-college.ac.uk](mailto:glenn.osborn@kingston-college.ac.uk)



## Chronic Respiratory Disease Exercise Instructor Course

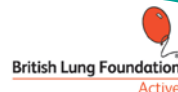
**\* LAST CHANCE TO APPLY FOR A BLF BURSARY \***

This innovative **distance learning** course (with one contact day and half day assessment) is for exercise professionals who are looking to develop their knowledge of respiratory disease in the context of safe and effective exercise programming for this client group.

The British Lung Foundation would like to welcome applicants to apply for a BLF bursary for a place on this course. The next course will begin in January 2011 for which the application deadline is the **20th December 2010**.

For more details or an application pack go to [www.lunguk.org](http://www.lunguk.org) or contact Danielle on 020 7688 5618 or [www.exercise@blf-uk.org](mailto:www.exercise@blf-uk.org)

Reg. charity of England & Wales - no. 326730  
Charity reg in Scotland - no. SC038415



## Why not take control of your HSE First Aid needs?

### The Five-Day First Aid Instructor Course

Includes the PTLLS Level 3 Training Qualification

"...I found the Instructor Course to be excellent and a credit to your company..."  
Debbie Hull (Bishops Stortford)

## Nuco Training Ltd

08456 444 999

[enquiries@nucotraining.com](mailto:enquiries@nucotraining.com)  
[www.nucotraining.com](http://www.nucotraining.com)  
[www.nucoplus.com](http://www.nucoplus.com)



**FOR ALL YOUR FIRST AID NEEDS**

[www.leisureopportunities.co.uk](http://www.leisureopportunities.co.uk)

# leisureopportunities

news & jobs **updated daily** online

YOUR 1ST CHOICE FOR RECRUITMENT & TRAINING

## Forthcoming Issues:

**25 JANUARY 2011**

Book by NOON on  
Weds 19th January 2011

**8 FEBRUARY 2011**

Book by NOON on  
Weds 2nd February 2011

**22 FEBRUARY 2011**

Book by NOON on  
Weds 16th February 2011



**TO ADVERTISE, CONTACT THE LEISURE OPPORTUNITIES TEAM ON**  
t: +44 (0)1462 431385 f: +44 (0)1462 433909  
e: [leisureopps@leisuremedia.com](mailto:leisureopps@leisuremedia.com)



Sport Industry  
Research Centre

## SPORT AND LEISURE STATISTICS

FORECASTS FOR THE SPORT AND LEISURE INDUSTRIES

The Sport Industry Research Centre publishes two annual reports, Leisure Forecasts and Sport Market Forecasts. These reports provide valuable insight into future market trends.

Both publications are essential references for industry practitioners, consultants and researchers.

The Sport Market Forecasts are produced in conjunction with Sport England.

To find out more please visit  
[www.shu.ac.uk/ad/sportandleisure](http://www.shu.ac.uk/ad/sportandleisure)

Or contact  
Susie Shaw  
Phone 0114 225 5919  
Fax 0114 225 4341  
Email [s.shaw@shu.ac.uk](mailto:s.shaw@shu.ac.uk)





## Sports Technician

£17,033 - £20,090 pa

Loughborough College is a highly successful FE College which offers a range of courses from Level 1 to BSc Honours Degree.

We are seeking a reliable, highly motivated technician to provide technical and administrative support to our Sport, Exercise and Fitness curriculum area. Your role will include the management of sports facilities and equipment as well as assisting lecturers to prepare and deliver teaching sessions.

A degree in Sports Science, experience in the sector and coaching qualifications or experience are essential requirements for this post as well as outstanding team and organisational skills.

To apply and to find out more about the benefits of working for Loughborough College, log on to [www.loucoll.ac.uk](http://www.loucoll.ac.uk).

Closing date for applications: Friday, 28th January 2011.

Loughborough College promotes diversity in employment and welcomes applications from all sections of the community. As part of our commitment to safeguarding and promoting the welfare of children, young people and vulnerable adults, successful applicants will undergo appropriate screening.



## WORKFORCE DEVELOPMENT OFFICER

South East Region

All Hours Worked

£28,216 per annum (plus benefits)

The ASA is seeking a Workforce Development Officer to join the South East team within the English National Programmes department.

The purpose of the Workforce Development Officer will be to co-ordinate at a regional and sub-regional level the planning and delivery of the ASA's recruit, train, support and retain workforce strategy.

The successful candidate will need to be able to absorb and impart information to others, have a systematic approach to problems and work within standard operating procedures.

The role requires excellent communication skills, as the role involves liaising with people both internally and externally. Project and time management skills are essential and the individual must have a flexible approach to work with an ability to work effectively as a team and on their own initiative. Knowledge of the Qualifications and Credit Framework is an advantage.

We are looking for an individual who is confident, consistent, competitive, who enjoys a challenge and thrives on variety and pace.

So if you feel you have the suitable skills and attributes for this position then we would like to hear from you.

To obtain an application pack contact our recruitment telephone line (24hrs) on 01509 618703, email [HRdepartment@swimming.org](mailto:HRdepartment@swimming.org) or download a pack from our website [www.swimming.org](http://www.swimming.org)

Closing date: 12.00pm on Friday 28th January 2011.

Interviews will take place: week commencing 14th February 2011.



The ASA is an equal opportunities employer and a holder of the Equality Standard at Foundation, Preliminary and Intermediate levels. A non-smoking policy operates throughout our premises occupied.

[www.swimming.org](http://www.swimming.org)

## JOB VACANCIES

**BH Live, is a new leisure and cultural trust in Bournemouth which manages and operates four leisure facilities, two of which are rated "Excellent" by QUEST. BH Live is looking to recruit the following positions:**

### Front of House Manager

Based at the Littledown Centre, Bournemouth  
36 hours per week £23,708 per annum (pro rata)



We are looking for someone with a genuine passion to provide outstanding customer service who has excellent communication skills and is a positive team player.

The successful applicant will need to be proactive in co-ordinating the smooth daily operation of the Littledown Centre and the 25,000 customers that visit the Centre per week, whilst working under pressure in a lively and dynamic environment.

Applicants must have practical experience as a Duty/Front Of House Manager in the leisure industry. A First Aid at Work qualification and Management / Supervisory Qualification is also desirable.



### Senior Health and Fitness Advisor



Littledown Centre and Pelhams Park Leisure Centre  
37 hours a week £18,453 per annum

The role will involve co-ordinating the day to day operation of the Gym, and ensuring the provision of a first class fitness facility.

Applicants must have a Level 3 Fitness Instructors Qualification and practical supervisory/management experience within the Leisure industry.

We are looking for someone with a genuine passion to provide outstanding customer service who has excellent communication skills and is a positive team player.

### Duty Manager



Based at the Stokewood Leisure Centre, Bournemouth  
37 hours per week £20,858 per annum

The successful applicant will need to be a versatile team player who will undertake a wide range of tasks and responsibilities. They must have excellent customer service skills and experience dealing with customers on the front line.

Applicants must have practical supervisory or managerial experience and hold an NPLQ & First Aid at Work qualification. Experience of working in a sales environment would also be desirable.

All advertised positions are rota based and would involve working evenings and weekends.

To apply, please email with a copy of your CV with a covering letter to [liz.ferrone@bhlive.co.uk](mailto:liz.ferrone@bhlive.co.uk) or complete a BH Live application form (download from [www.bhlive.co.uk](http://www.bhlive.co.uk)) **Closing date for all positions : Friday 28th January 2011**  
(If you do not hear from us within 3 weeks of the closing date your application has been unsuccessful)

BH Live is a Company Limited by Guarantee and registered Charity. Charity No: 1138311. Visit [www.bhlive.co.uk](http://www.bhlive.co.uk)

More Participation | Higher Audiences | Greater Economic Benefit

## DUNSTABLE TOWN COUNCIL

### CREASEY PARK COMMUNITY FOOTBALL CENTRE MANAGER

Salary range – £29,236 – £31,754

Working in partnership with Central Bedfordshire Council and the Football Foundation, Dunstable Town Council will soon be opening a brand new Community Football centre. Serving the whole of Dunstable and surrounding areas, this exciting new facility will comprise a state of the art 3G full size synthetic football pitch, a main pitch home to Dunstable Town FC and AFC Dunstable, 6 further pitches for mini through to adult football, a BMX track and community facilities including 6 changing rooms and a large community space with bar and catering facilities.

As part of this exciting new project Dunstable Town Council is seeking to recruit an experienced facility manager who will be responsible for all operations at the new Football Centre as well as having responsibility for facilitating the delivery of an ambitious sports development programme to be achieved as part of a funding arrangement with the Football Foundation.

The Council is seeking to recruit someone with experience of managing leisure and sports facilities as well as knowledge of sports and particularly football development principles. The successful candidate will also have the ability to work with a wide range of partners and facility stakeholders.

Reporting directly to the Town Clerk, this is a challenging and exciting role where the ideal candidate will be able to balance the demands of generating significant levels of revenue income with ensuring that all partners benefit from the new facility and the delivery of the sports development plan.

**Interested?** Please call David Ashlee – Town Clerk (01582 890600) for an informal discussion. Visit our website [www.dunstable.gov.uk](http://www.dunstable.gov.uk) or call 01582 513000 for an application pack.

Closing date for applications – Friday 28th January 2011  
Provisional interview date – Thursday 10th February 2011



DUNSTABLE  
TOWN COUNCIL

In partnership with:



University of Essex

## Sports Supervisors

**(Ref. SG265)** The University of Essex Sports Centre is seeking to appoint two Sports Supervisors to join their team. The persons appointed will be responsible for the supervision of sports facilities, sports coaching, organisation of events, maintenance and setting up of sports equipment, and some reception work. Candidates must have an all-round interest in sport and be suitably qualified in Sport, Recreation, Physical Education, or Fitness and Health. Due to the nature of the work, appointment will be subject to a Criminal Records Disclosure check.

**Salary: £17,111-£19,743 pa plus shift allowance**

**Closing date: 30 January 2011**

**Apply online. If you have a disability and would like information in a different format telephone (01206) 873521/874588.**



<http://jobs.essex.ac.uk>

## leisure-kit.net

The website, email and search engine for leisure buyers

beauty

fitness

fun

gaming

golf

green

hospitality

leisure

museum

spa

sport

water



Visit leisure-kit.net for the latest news about products and services for the leisure industry.

To advertise your product and reach over 20,000 leisure buyers call now on +44 (0)1462 431385 or email [leisure-kit@leisuremedia.com](mailto:leisure-kit@leisuremedia.com)

subscribe online at [www.leisuresubs.com](http://www.leisuresubs.com) or call +44 (0)1462 431385

## leisure opportunities joblink

Book a joblink with us and we'll put your logo and company name on every page of the Leisure Opportunities website [www.leisureopportunities.co.uk](http://www.leisureopportunities.co.uk)

This advert will have a hyperlink to your website, where you can list all the job vacancies in your company.



Go to [www.leisureopportunities.co.uk](http://www.leisureopportunities.co.uk) and click on the link to see the latest jobs from...



**TO BOOK** Call: +44 1462 471747  
and start getting applications for your jobs IMMEDIATELY!





## London's Most Successful Social Enterprise

### The Graduate's choice

#### GRADUATE TRAINEE MANAGERS SCHEME 2011

GLL are seeking high calibre graduates to join the September 2011 intake of the Graduate Trainee Managers scheme. Our scheme is recognised as one of the best in the industry. If you are aiming for senior management, operate with integrity and want to make a real difference, we would like to hear from you.

Our challenging 2 year leisure management training programme for graduates includes practical work experience in all aspects of leisure provision, front line and support services along with a structured programme of statutory, management and modular training.

The graduate trainee management scheme is nationally recognised within the industry and aims to produce the General Managers of the future. Many of GLL's General and Service Managers came through the GLL Graduate Scheme. You must be a business driven, customer focused graduate with a strong work ethic and capable of embracing this fast track scheme.

#### THE BENEFITS WE OFFER:

- Starting salary circa £18.8k plus 8% bonus (following probationary review)
- Salary review in second year of training programme
- Location: London (Assistance with relocation to London may be available)
- Supervisory placements in year two.
- Attractive pension scheme (available after 12 months)
- HSA health plan available
- Opportunity to become a GLL Society member
- Uniform supplied
- Ride to work bicycle purchase
- Travel allowance available
- Discounted staff fitness membership
- Continuous training and career development

GLL is London's largest operator of leisure centres now operating in over 45% of London's boroughs including the 5 Olympic boroughs and Crystal Palace National Sports Centre. GLL is the UK's largest Leisure Trust and London's most successful Social Enterprise. As a worker owned and controlled organisation, we offer opportunities and benefits for exciting career development and personal growth.

To apply please visit the GLL web site on [gll.org/careers](http://gll.org/careers) and download an information pack on how to apply or email [recruitment@gll.org](mailto:recruitment@gll.org)

We have a number of fitness, sales, reception and management opportunities.



#### GLL - London's Most Successful Social Enterprise

We are an equal opportunities employer and applications are encouraged from all sections of the community. GLL is a non-smoking organisation.

GLL working in partnership with the London Boroughs of Barnet, Camden, Ealing, Greenwich, Hackney, Hammersmith & Fulham, Hillingdon, Lambeth, Merton, Newham, Sutton, Tower Hamlets, Waltham Forest, Epsom & Ewell Borough Council, Reading Borough Council, Bellingham Community Project, the London Development Agency and the London Playing Fields Foundation.

I.P.S. Registration No. 27793R  
Inland Revenue Charity No. XR43398



[www.gll.org](http://www.gll.org)

## Customer Service and Training Advisor

#### About You ...

As well as having a good knowledge of the Leisure (Recreation) industry you should also have an adaptable attitude; be well organised; enthusiastic; have a flair for communication; be able to listen and act on customer requirements; have the ability to learn and assimilate information quickly; have the ability to assess and prioritise tasks without supervision; and be a self-motivated, team player capable of working on their own initiative whilst enjoying being part of a dynamic and very effective team.

#### About the Job ...

Based at our offices in Uckfield, East Sussex, the position will be extremely varied and draw on the applicants' knowledge of the Leisure Industry and how Management Information Systems can help to enhance both the Point of Sale and Administration of Leisure facilities.

#### The job will involve:

- Assisting with demonstrations and presentations to prospective customers;
- Assisting with the co-ordination and scheduling of new installations;
- Assisting with the information collection phase of new installations;
- Assisting with the system build phase of new installations and occasionally data input;
- Loading and checking the configuration of our software applications prior to installation;
- Carrying out training at our offices and on site in our products as required;
- Attending on site for 'Go Live' day to offer direct support;
- Working as part of the Customer Support Team to provide 'Hotline Help Desk' support;
- Supporting customers by telephone, ensuring that the initial call is taken through to a successful conclusion;
- Assisting with the delivery of bespoke seminars;
- Enhancing software documentation and creating user guides for new modules;
- In depth testing and assisting with the development of new software applications and new releases of current software.

## Delta Computer Services

Scuba - The Ultimate Leisure Management System

The hours of work would normally be 08:00 to 17:00, Monday to Friday, although some flexibility of start and finish times is possible, with one hour paid lunch. It will be necessary at times to work and/or travel outside these hours as installations and training must take place at times that fit in with leisure facility operation.

The post is subject to 6 months probation with 5 weeks paid annual leave exclusive of bank and public holidays. The opportunity to join a contributory pension scheme is provided. A starting salary of between £18,000 and £20,000 per annum is negotiable depending on experience, rising to between £22,000 and £25,000 by the end of two years service.

#### About Us ...

Established in 1977 Delta Computer Services is a leading UK company specialising in the design, implementation and support of computerised Management Information Systems for leisure facilities throughout the British Isles. Local sites include The University of Brighton, University of Sussex and Freedom Leisure, one of our largest customers with several linked sites in the South East.

If you think you fit the bill please send us your CV and a covering letter (either by post or by e-mail) by Wednesday February 2nd 2011 and mark it for the attention of Graeme Hogg. We will then send applicants we deem to be suitable an application form. Interviews will take place at a date to be specified during February 2011.

Suite 4, Falmer Court,  
London Road,  
Uckfield, East Sussex  
TN22 1HN

Tel: 01825 768188  
email: [sales@deltacomputerservices.co.uk](mailto:sales@deltacomputerservices.co.uk)

[www.deltacomputerservices.co.uk](http://www.deltacomputerservices.co.uk)



For more details on the following jobs  
visit [www.leisureopportunities.co.uk](http://www.leisureopportunities.co.uk)  
or call +44 (0)1462 431385



### Operations Manager

Salary: Competitive package  
Company: Énergie Fitness Clubs  
Location: Milton Keynes based

### Sports Technician

Salary: £17,033 - £20,090 pa  
Company: Loughborough College  
Location: Loughborough, UK

### Full-time Female Fitness Instructor

Company: Cheshire Health Club & Spa  
Location: Mobberley, Cheshire, UK

### Full-time Receptionist

Company: Cheshire Health Club & Spa  
Location: Mobberley, Cheshire, UK

### Customer Relations Manager

Company: Fusion  
Location: London, UK

### General Managers

Company: Fusion  
Location: London, UK

### Creasey Park Community Football Centre Manager

Salary: £29,236 - £31,754  
Company: Dunstable Town Council

### Spa Therapists

Company: Kempinski Hotel Ishtar  
Location: Jordan

### Head of Visitor Experience and Supporter Development

Salary: C. £55k + excellent benefits  
Company: National Trust  
Location: Yorkshire and the North East, UK

### Functions Manager

Salary: £18,000 pa  
Company: National Marine Aquarium  
Location: Plymouth, UK

### Sports Development Manager

Salary: £24k pa Company: Jags Sports Club  
Location: London, UK

### Active Women Officer

Salary: Scale 4 (SCP 18 to 21) £17,161 - £19,126 pa  
Company: Leisure in Hyndburn  
Location: Accrington, UK

### Personal Trainers Wanted!

Salary: OTE £40-60K  
Company: YOUR Personal Training  
Location: Various (see details) UK

### Senior Health and Fitness Advisor

Salary: £18,453 per annum  
Company: BH Live  
Location: Bournemouth, UK

### Duty Manager

Salary: £21,519 per annum  
Company: BH Live  
Location: Bournemouth, UK

### Front of House Manager

Salary: £24,646 per annum (pro rata)  
Company: BH Live  
Location: Bournemouth, UK

### Personal Trainers

Company: Kirklees Active Leisure  
Location: Huddersfield, UK

### Me2 Assistant - Permanent

Salary: £17,085 - £20,549 pa  
Company: National Deaf Children's Society  
Location: Birmingham, UK

### Operations Manager

Salary: £20,000 - £25,000  
Company: Daventry Active Ltd  
Location: Daventry, UK

### Account Manager

Company: Star Trac Europe  
Location: North East, UK

### Part Time Spa Therapist

Company: Fairmont St Andrews  
Location: St Andrews, Scotland, UK

### Massage Practitioner / Treatment room for rent

Company: Wentworth Club and Spa  
Location: Virginia Water, Surrey, UK

### Trainer

Salary: Competitive  
Company: Cascade3d  
Location: Nationwide, UK

### Spa Therapists

Salary: competitive  
Company: Marriott - St. Pancras  
Location: London, UK

### Account Manager

Salary: Competitive  
Company: Cascade3d  
Location: Nationwide, UK

### Marketing Executive (Student Activity)

Salary: c£23,000 pa  
Company: University of Hertfordshire  
Location: Hertfordshire, UK

### Gym Manager - 32 hours per week

Salary: £14,930 per annum  
Company: YMCA London South West  
Location: London, UK

### Workforce Development Officer

Salary: £28,216 pa (plus benefits)  
Company: Amateur Swimming Association (ASA)  
Location: South East Region, UK

### Academy Manager

Company: Soho Gyms  
Location: London, UK

### Become a Personal Trainer

Company: PT Academy.  
Location: Nationwide, UK

### Experienced Personal Trainers Required

Salary: Competitive  
Company: Ten Pilates  
Location: Central London, UK

### Personal Trainers with Management Experience

Salary: Competitive  
Company: Ten Pilates  
Location: Central London, UK

### Female Senior Stylist

Salary: Competitive Salary + benefits  
Company: Dashing Hair  
Location: Abu Dhabi, United Arab Emirates

### Gym / Studio Instructors

Company: The Daniels Fitness Group  
Location: North and Central London, UK

### Marketing Analyst

Salary: Competitive  
Company: Cascade3d  
Location: Cricklade, Wiltshire, UK



## SOHO GYMS ACADEMY MANAGER

*Do you want to manage  
your own Academy?*

*Do you have the skills to  
develop it into the fitness  
Academy of choice?*

*Can you tap into new  
training markets?*



If yes, join Soho Gyms to help us develop fitness training in a real gym and inspire a new level of quality fitness professionals.

**Apply with CV and covering letter to  
[recruit@sohogyms.com](mailto:recruit@sohogyms.com)**



academy



## Operations Manager

**énergie** is the UK's largest fitness club franchise with 70 clubs open and a healthy pipeline of future openings for 2011. Our business model means that we are one of the few fitness operators who are expanding our network.

We are recruiting an Operations Manager to support the énergie fitness clubs and énergie Fit4Less clubs in England & Wales. Reporting to the Operations Director, the role is based from the Milton Keynes office but requires travel on a weekly basis.

The primary function of the role is to influence the performance of the clubs through monitoring KPIs, conducting audits, driving the sales and retention process and providing on-site support as required.

énergie's unique empower programme is the foundation of our member experience and the Operations Manager will be expected to champion this programme to colleagues, owners and members.

Relationship management, communications and coaching are key skills as are time management and administration.

Applicants must have relevant experience in a multi-site organisation and a track record of success in operations and business management.

Competitive package and incentives for the right candidate.

Please email your CV to [innes@energiehq.com](mailto:innes@energiehq.com)

**For more information on the énergie group go to  
[www.energiefitnessclubs.com](http://www.energiefitnessclubs.com)**



### Project Officers The Queen Elizabeth II Fields Challenge

Salary £30-33k

London / 2 year full time contract

Two Project Officers will help to deliver the Queen Elizabeth II Fields Challenge through engaging with local authorities, town and parish councils and other landowners to help secure the protection of 2012 outdoor recreational spaces by 2012. The Officers will also be tasked with increasing community engagement on these sites.

#### Requirements:

- Degree or equivalent level education
- Experience in the sport and leisure industry, public sector or a not-for-profit organisation
- Excellent communication skills
- Experience of building effective working relationships with external organisations
- Ability to travel

For further information on the role and details of how to apply please visit [www.qe2fields.com/vacancies](http://www.qe2fields.com/vacancies) or contact Helen Griffiths at [helen.griffiths@fieldsintrust.org](mailto:helen.griffiths@fieldsintrust.org)

Fields in Trust, 15 Crinan Street, London N1 9SQ 0207 427 2110

## CHESHIRE HEALTH CLUB & SPA

### FULL-TIME, FEMALE FITNESS INSTRUCTOR

Due to the nature of this role we are looking for a dynamic Female Fitness Instructor to join our team in Mobberley, Cheshire. You will be qualified to a minimum of REPS Level 2 and a Group Exercise qualification would also be desirable. Duties to include Fitness Testing, Gym Inductions and Programme Design as well as overseeing the day-to-day operation of the Gym, Pool and studio.

### FULL-TIME RECEPTIONIST

We are looking for a dynamic Receptionist to join our team in Mobberley, Cheshire. Duties to include computer work, cash handling and serving light refreshments to our members. High standards of personal presentation are essential for this customer-facing role.

Experience preferred for both positions, but not essential, as full training will be given. Hours of work for both positions are: 40 hrs per week (shifts 5 days over 7).

**CV and letter of application to:  
[mark@cheshirehealthclub.co.uk](mailto:mark@cheshirehealthclub.co.uk)**



## Intelligence to make your business fly



With proven performance in high quality, accurate reporting and communications solutions, Cascade<sup>3d</sup> works with all the leading leisure management systems.

### ACCOUNT MANAGERS AND TRAINERS

We are looking for people who will go out of their way to help our customers understand their businesses through our range of products and services. You will need to have a thorough understanding of leisure operations and be working with systems managers and business leaders in your current role

### MARKETING ANALYST

Do you want to help the leisure industry deliver outstanding customer communications? We help our customers provide targeted direct marketing through multiple channels, based on manipulating membership and behavioural data.

For Job Descriptions see Leisure Opportunities website. Email a CV and covering letter to [recruitment@cascade3d.com](mailto:recruitment@cascade3d.com) with the role in the subject line. **Closing date: 31/01/2011**

## KPMG: Pontin's attracts 10 offers

PETE HAYMAN

KPMG has expressed confidence over the future of Pontin's after it revealed that 10 offers had been received for the holiday parks operator.

The professional services firm has said that the majority of bidders for Pontin's are "keen" to operate the business as a going concern.

Publishing its creditors' report, KPMG revealed that the level of Pontin's secured creditor debt stands at around £44m, with unsecured debt at around £3.6m.

Rob Croxson, joint administrator of Pontin's and KPMG restructuring director, said: "The level of support really reflects the goodwill the brand has earned over its long history.



The holiday park operator went into administration on 12 November

"We have received a great deal of interest in the business and should be in a position to make an announcement on the sale of business in the coming week."

## Bookmakers issue Horseracing Levy warning

PETE HAYMAN

The Bookmakers' Committee, which represents firms including William Hill and Gala Coral, has warned of job losses if proposals of the government appointed members of the Horserace Betting Levy Board are accepted.

In its submission to culture secretary Jeremy Hunt on the rate of the Levy for 2011-12, the committee argued the recommendations would see more than 400 small betting shops to close, while calling for the retention of protection for less profitable bookmakers.

## Developer in Leeds Arena legal claim

PETE HAYMAN

Montpellier Estates has filed a claim for deceit against Leeds City Council (LCC) with regards to the procurement of a new entertainment arena being developed in the city.

The claim follows the council's decision to build the Leeds Arena itself, despite holding a procurement process for the scheme.

According to Montpellier Estates, LCC were exploring alternative options for the project in October 2007 – only a couple of months after launching the process. Tenders were submitted in September 2008, and the Harrogate-based developer said the council failed to inform bidders of its intentions under European law.

Montpellier Estates chair Jan Fletcher said: "I have spent two years trying to work with Leeds City Council to find a solution to this claim, but we have now exhausted all options."



Populous is behind the proposals for the new venue

LCC announced in November 2008 that it would develop the Populous-designed arena at Claypit Lane, a site that Montpellier said had been dismissed in a feasibility study. A spokesperson for LCC said: "We consider this to be an entirely desperate and vexatious claim."

- Arts & Business +44 (0)20 7378 8143  
[www.aandb.org.uk](http://www.aandb.org.uk)
- ALVA +44 (0)20 7222 1728  
[www.alva.org.uk](http://www.alva.org.uk)
- Arts Council +44 (0)20 7333 0100  
[www.artscouncil.org.uk](http://www.artscouncil.org.uk)
- ASVA +44 (0)1786 475152  
[www.asva.co.uk](http://www.asva.co.uk)
- BALPPA +44 (0)20 7403 4455  
[www.balppa.org](http://www.balppa.org)
- BHA +44 (0)845 880 7744  
[www.bha-online.org.uk](http://www.bha-online.org.uk)
- BICM +44 (0)845 217 1811  
[www.bicm.co.uk](http://www.bicm.co.uk)
- BiSL +44 (0)20 8780 2377  
[www.bisl.org](http://www.bisl.org)
- CCPR +44 (0)20 7976 3900  
[www.ccpr.org.uk](http://www.ccpr.org.uk)
- CMAE +44 (0)1334 460 850  
[www.cmaeurope.org](http://www.cmaeurope.org)
- Countryside Agency +44 (0)1242 521381  
[www.countryside.gov.uk](http://www.countryside.gov.uk)
- CPRE +44 (0)20 7981 2800  
[www.cpre.org.uk](http://www.cpre.org.uk)
- English Heritage +44 (0)870 333 1181  
[www.english-heritage.org.uk](http://www.english-heritage.org.uk)
- FSPA +44 (0)2476 414999  
[www.sportsandplay.com](http://www.sportsandplay.com)
- FIA +44 (0)20 7420 8560  
[www.fia.org.uk](http://www.fia.org.uk)
- HHA +44 (0)20 7259 5688  
[www.hha.org.uk](http://www.hha.org.uk)
- IAAPA +1 703 836 4800  
[www.iaapa.org](http://www.iaapa.org)
- IEAP +44 (0)1403 265 988  
[www.ieap.co.uk](http://www.ieap.co.uk)
- Institute of Hospitality +44 (0)20 8661 4900  
[www.instituteofhospitality.org.uk](http://www.instituteofhospitality.org.uk)
- ISPAL +44 (0)845 603 8734  
[www.ispal.org.uk](http://www.ispal.org.uk)
- LPF +44 (0)1462 471932  
[www.leisureprop.com](http://www.leisureprop.com)
- LMCA +44 (0)1278 436910  
[www.lmca.info](http://www.lmca.info)
- MLA +44 (0)20 7273 1444  
[www.mla.gov.uk](http://www.mla.gov.uk)
- NPFA +44 (0)20 7833 5360  
[www.playing-fields.com](http://www.playing-fields.com)
- People 1st +44 (0)870 060 2550  
[www.people1st.co.uk](http://www.people1st.co.uk)
- REPs +44 (0)20 8686 6464  
[www.exerciseregister.org](http://www.exerciseregister.org)
- SAPCA +44 (0)24 7641 6316  
[www.sapca.org.uk](http://www.sapca.org.uk)
- Sports Aid +44 (0)20 7273 1975  
[www.sportsaid.org.uk](http://www.sportsaid.org.uk)
- Sport England +44 (0)8458 508 508  
[www.sportengland.org](http://www.sportengland.org)
- Springboard +44 (0)20 7497 8654  
[www.springboarduk.org.uk](http://www.springboarduk.org.uk)
- SkillsActive +44 (0)20 7632 2000  
[www.skillsactive.com](http://www.skillsactive.com)
- Tourism Management Institute +44 (0)1926 641506  
[www.tmi.org.uk](http://www.tmi.org.uk)
- Tourism Society +44 (0)20 8661 4636  
[www.tourismsociety.org](http://www.tourismsociety.org)
- VisitBritain +44 (0)20 7578 1000  
[www.visitbritain.com](http://www.visitbritain.com)
- World Leisure +1 250 497 6578  
[www.worldleisure.org](http://www.worldleisure.org)