

Community sports clubs in the UK 'defying recession'

By **Pete Hayman**

Community sports clubs across the UK are withstanding the recession after reporting an increase in membership levels, according to new research by the Central Council of Physical Recreation (CCPR).

An independent study of 3,000 clubs – commissioned by the CCPR every other year to gauge the state of grass-roots sports – found that 34 per cent had seen an increase in the number of adult memberships and 40 per cent in junior memberships.

A total of 73 sports were represented in the Survey of Sports Clubs 2009, with sailing,



Junior football is among the sports to report the largest growth

motor sports and junior football among the sports to report the largest growth since 2007. It is hoped that the results from the CCPR study demonstrate the positive effect

of the government's attempts to increase the number of people participating in sport ahead of the London 2012 Olympics through additional levels of investment.

CCPR chief executive Tim Lamb said: "Hopefully, what we're beginning to see is the fruit of policies designed to deliver a legacy from the Olympic Games, bringing more people into more clubs."

"It shouldn't be any surprise that people are joining their local sports club despite the current financial downturn – communities tend to come to the fore during crises and sports clubs are at the very heart of communities."

Despite the increase in membership levels, the recession has impacted on finances, with the average profit per club declining by a third due to increasing costs.

David Lloyd unveils £1.5m Raynes Park proposals

Indoor bowling alley and children's centre scheduled for completion in early 2010

By **Pete Hayman**

A new indoor bowling alley and a purpose-built children's centre are set to be created as part of a £1.5m scheme unveiled by David Lloyd Leisure (DLL) to improve leisure facilities in Raynes Park, London.

DLL's main health club in Raynes Park will remain unaffected by work on the scheme, which will result in a complete overhaul of the area's existing bowling facilities. The new venue will operate under the DLKids brand.



The DLKids venue will offer a range of children's activities

A range of activities and programmes for families with children will be provided by the DLKids venue, which will be

linked to the revamped bowling venue to offer educational and fitness sessions, play and after-school activities.

DLKids currently offers more than 2,000 activities each week across the country, including sessions for specific age groups, sports coaching led by specialist instructors and pre- and post-natal activities.

The new facilities, which have been designed for use by the local community, will be open to both members and non-members and are scheduled for completion in early 2010.

Harlow complex opening delayed

A problem with the installation of fire dampers at the new £25m Leisurezone leisure complex in Harlow, Essex, has forced the opening of the facility to be put on hold.

Forming part of the wider Harlow Gateway regeneration scheme, it had been hoped that Abingdon-based contractor Leadbitter would hand over the venue to the Gateway partners by Christmas 2009.

CONTACTS

THE LEISURE MEDIA COMPANY

Portmill House, Portmill Lane,
Hitchin, Herts SG5 1DJ, UK

Tel: +44 (0)1462 431385

Fax: +44 (0)1462 433909

e-mail: please use contacts'
fullname@leisuremedia.com

Subscriptions

Julie Albone 01462 471915

subs@leisuremedia.com

Editor

Liz Terry 01462 431385

Managing Editor

Tom Walker 01462 471934

Journalists

Pete Hayman 01462 471938

Helen Patenall 01462 471934

Sarah Todd 01462 471927

Martin Nash 01462 471933

Designer

Ed Gallagher 01905 20198

Internet

Dean Fox 01462 471900

Tim Nash 01462 471917

Sales Team Manager

Annie Lovell 01462 471901

Account Managers

Recruitment, training, tenders

Paul Thorman 01462 471904

Simon Hinksman 01462 471905

Anthony Ward 01462 471914

Emma Matthews 01462 471907

Property desk

Simon Hinksman 01462 471905

Spa Opportunities

Emma Matthews 01462 471907

Financial Controller

Sue Davis 01395 519398

Financial Administrator

Denise Gildea 01462 471930

Circulation Manager

Michael Emmerson 01462 471932

To subscribe to Leisure Opportunities, log on to www.leisuresubs.com email: subs@leisuremedia.com tel +44 (0)1462 471913 fax +44 (0)1462 433909. Annual subscription rates are UK £31, Europe £41, Rest of world £62, students UK £16. Leisure Opportunities is published fortnightly by The Leisure Media Company Limited, Portmill House, Portmill Lane, Hitchin, Herts SG5 1DJ, UK and is distributed in the USA by SPP, 75 Aberdeen Road, Emigsville, PA 17318-0437. Periodicals postage paid at Manchester, PA POSTMASTER Send US address changes to Leisure Opportunities, c/o PO Box 437, Emigsville, PA 17318-0437.

The views expressed in print are those of the author and do not necessarily represent those of the publisher The Leisure Media Company Limited. All rights reserved. No part of this publication may be reproduced, stored in a retrieval system or transmitted in any form or by means, electronic, mechanical, photocopying, recorded or otherwise without the prior permission of the copyright holder. Printed by Warners Midland plc.

©The Leisure Media Company Limited 2009
ISSN 0952/8210

Revamp for Staffordshire arboretum

National Memorial Arboretum in Alrewas to undergo £8m redevelopment

By Pete Hayman

The National Memorial Arboretum (NMA) in Alrewas, Staffordshire, is set to undergo a £8m refurbishment, which aims to transform the 150-acre (61-hectare) site into a major centre for remembrance.

Established in 1997, the arboretum has seen more than 50,000 trees planted and is home to 160 memorials, including the Armed Forces Memorial dedicated to 16,000 service personnel who have died on duty since 1945.

The revamp will include an Armed Forces Pavilion, a 'Heroes Square', an exhibition space and an education facility, while Glenn Howells Architects has been appointed to remodel the landscape to unite the existing and new buildings.



The revamp will include new exhibition spaces and a pavilion

NMA chief executive Charles Bagot Jewitt said: "The brief was to design a scheme which not only accommodates the increased visitor numbers but is also a fitting tribute to those that have given their lives in the service of their country."

"The team have created building and event space which

we believe will inspire all that pass through our doors and add greatly to the experience of a visit."

Support for British forces in Iraq and Afghanistan has led to an increase in visitors to the NMA and it is expected that the site will attract nearly 500,000 visitors each year.

Parkwood axes sunbeds from leisure centres

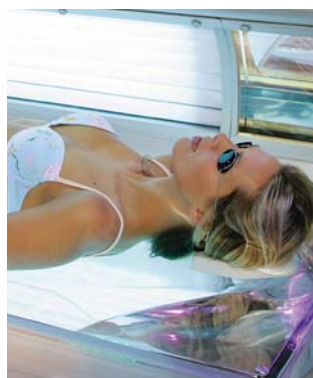
By Tom Walker

Health club operator and management contractor Parkwood Leisure has become the latest operator to remove all sunbeds from its sites.

According to Andrew Holt, managing director, the decision to remove all tanning equipment by 1 January 2010 was made after the group reviewed research conducted by the International Agency for Research on Cancer (IARC).

Holt said: "Having considered the latest research in this area, we now feel that removing the sunbeds is in the best interests of our customers."

"Health and safety is our number one priority and always will be. Our local authority clients have given us their unanimous support."



Parkwood will remove the beds from all of its 81 sites

Lorraine Langdon, a member at Cardiff International Pool, which is operated by Parkwood, said she was relieved to see the sunbeds removed.

"I am pleased to see that the sunbeds are being removed from our centre. I think they are detrimental to our health and it is good to see that

customers and members' health alike are being taken into consideration."

In July, a report by IARC declared that it had established a "clear link" between sunbeds and skin cancer.

The IARC, the World Health Organisation's agency for research into cancer, reclassified sunbeds as a Group 1 agent and determined them to be "carcinogenic to humans". The move means that sunbeds and artificial tanning systems are now deemed to pose a risk to human health.

Katy Scammell, Cancer Research UK's SunSmart manager, said: "Sunbeds have no real health benefits and we're really pleased to hear that Parkwood Leisure are removing them from their leisure centres."

New Medieval gallery opened at V&A

New £30m gallery includes 10 exhibition spaces and more than 1,800 artefacts

By **Luke Tuchscherer**

The Victoria & Albert Museum (V&A) in London has opened its new Medieval and Renaissance Gallery, as part of a £120m revamp project.

Spanning the east wing of the museum, the gallery's 10 exhibition spaces contain artefacts dating between 300 and 1600 and feature exhibitions including Medieval Monasteries, Gothic Architecture, Charlemagne and Aachen and Rudolph II & Prague.

Some of the objects include stained glass from Mairwald Abbey in Germany, an oak staircase from Morlaix, France, the Book of Trades (Das Standebuch) from Frankfurt and an edition of Aesop's Fables published in 1485. In total, the galleries present more than



The gallery was designed by McInnes, Usher, McKnight Architects

1800 objects from the medieval and renaissance collections.

The gallery was designed by MUMA (McInnes, Usher, McKnight Architects) and was partly funded by grants from the Heritage Lottery Fund. The wider plans for the museum,

named the FuturePlan project, were put into action in 2001, when the £30m British Galleries were opened.

The next phase of the project is the completion of the Ceramic Galleries, which is scheduled to open next year.

UK leisure companies returning to recruitment

By **Tom Walker**

Only a fraction of leisure and hospitality businesses are looking to cut jobs in the new year, with 89 per cent of companies either looking to recruit new blood or keep current staff levels.

A study from banking giant Santander shows that only five per cent of small and medium-sized UK companies plan to shed jobs during 2010, with a quarter (24 per cent) looking to create new positions.

The figures seem to buck the trend of job cuts across other



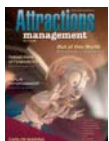
A quarter of small companies are currently looking to recruit staff

industries. The overall number of unemployed people in the UK has reached a 14-year high of nearly three million.

Steve Pateman, head of Santander Corporate Banking,

said: "SMEs have proved remarkably resilient throughout the recession. It is encouraging to see the confidence recorded in our report may be translated into jobs."

THE LEISURE MEDIA COMPANY PUBLISHES



IN THIS ISSUE

04 HEALTH & FITNESS

- ▶ Woodland workout scheme
- ▶ Wakefield plans revealed

06 COMMERCIAL

- ▶ Holiday village approved
- ▶ Silverstone unveils designs

08 SPORT

- ▶ Everton plans binned
- ▶ Rugby House opens

10 ATTRACTIONS

- ▶ Jewish Museum reopens
- ▶ Mivan bags contracts

12 HOSPITALITY

- ▶ A taste of Mexico
- ▶ Blythswood hotel opens

14 ARTS & CULTURE

- ▶ Chapter Arts Centre reopens
- ▶ ACE funding criteria

16 PARKS & COUNTRYSIDE

- ▶ Bury scheme begins
- ▶ Heartwood plans approved

18 PROPERTY

- ▶ Camberwell Baths revamp
- ▶ Altitude for Dundalk

19 PROPERTY/TENDERS

20 TOURISM

- ▶ Tourism still buoyant
- ▶ Hadrian's Wall all lit up

21 TRAINING

- ▶ HLF Skills for the future
- ▶ LA Fitness teams up

22 TRAINING DIRECTORY

25 JOBS

IN BRIEF

IFI recognition for Sencio

► Sencio Community Leisure has secured the Inclusive Fitness Initiative's (IFI) provisional level status. The Kent-based operator has achieved the accreditation for its work at Sevenoaks Leisure Centre, which it manages on behalf of the local council. Mark Whyman, Sencio Community Leisure's chief executive, said: "Access to facilities and opportunities for everyone has always been key to our operation and we are constantly looking to develop and serve the needs of our customers better."

Firm appointed to complete Louth complex

► Lincoln-based Gelders Group has been appointed by East Lindsey District Council to complete the final stages of work on a new £12m leisure centre in Louth. The council had been due to take ownership of the Meridian Leisure Centre in December 2009, but has now admitted it is unsure when the complex will open after construction company UCS Civils entered administration in November 2009. Facilities at the new centre will include a 25m, eight-lane swimming pool, a fitness suite with sauna and steamroom, a child care area with outdoor and indoor play areas and a leisure pool with a flume.

Withington Leisure Centre reopens

► Withington Leisure Centre in Manchester has reopened after a £200,000 refurbishment. The centre, which is operated by Manchester Sport and Leisure Trust on behalf of the city council, was closed in late September after a roof inspection found that a number of glazing panels above the swimming pool needed replacing.

Council unveils Wakefield pool plans

New £10m centre to include 25m swimming pool and 130-station health club

By **Tom Walker**

Detailed plans for a new multi-million pound swimming pool and fitness complex in the centre of Wakefield, West Yorkshire, have been unveiled by the local authority.

The scheme, which is expected to cost at least £10m and will be situated on the site of the former Sun Lane baths, will now be the subject of a two-week consultation.

Wakefield Council's proposals include an eight-lane, 25m swimming pool and a 13m by 7m learner pool, both boasting moveable floors to allow more members of the local community to have access to the facility.

A 130-station fitness suite, a multi-use activity studio and a health suite with spa bath, steamroom and sauna are also earmarked as part of the project, as well as a



The redevelopment of the Sun Lane Baths is estimated to cost £10m

200-capacity spectator viewing area and a café.

Denise Jeffery, deputy leader and cabinet member for sport and regeneration at Wakefield Council, said: "Last year we promised people we would work towards building a fantastic new pool in the city and we are now moving forward in earnest.

"This is a major project and one we are determined to get

right - these things don't happen overnight and a lot of work has been going on in the background. Now we can show people our initial thoughts and look forward to hearing people's responses as we move towards a planning application early next year."

The two-week, public consultation into the plans will be held between 30 November and 13 December.

Kids not getting enough exercise

Parents have been warned to "take off the blinkers" over how active their children are to prevent an increase in childhood obesity levels, according to new research from the British Heart Foundation.

The new *Couch Kids* report found that 71 per cent of parents believe their children to be "active enough", despite just 11 per cent of young people doing the recommended daily hour of physical activity. According to the BHF, schools need to maximise the opportunities to participate in physical activities.

Council grant for referral centre

By **Tom Walker**

A £250,000 revamp of the Fitness @ The Leisure Centre facility at Stevenage Arts & Leisure Centre in Hertfordshire is set for completion this month.

The Stevenage Borough Council funded project will provide an expanded open plan gym facility, including 47 new pieces of G7 strength range equipment by Matrix Fitness System, to meet the increased number of GP referrals from local surgeries and the Lister Hospital.

A new entrance to allow easy access for wheelchair users, a new changing area and a new cycle studio will also be built. Allan Prescott, sports and



The centre receives 170 GP referrals each week

fitness manager at Stevenage Arts & Leisure Centre, said: "We have a very active GP referral programme and Matrix's equipment, we felt, was ideal for these customers needs."

The leisure centre currently receives 170 GP referrals each week for patients suffering from a range of ailments.

Woodland workout scheme unveiled

Initiative aims to inspire people to get fit while contributing to upkeep of habitats

By **Tom Walker**

A new 'woodland workout' scheme has been launched in Lincolnshire to help people keep fit while also helping to improve wildlife habitats in two woodland areas near Wraggsby and Market Rasen.

Developed in partnership between the Forestry Commission and Lincolnshire Lime-woods Project, the initiative at Osgodby Wood and Great West Wood will include the removal of invasive species of plants and heathland restoration.

Adults are being encouraged to sign up to the scheme, which will offer training in the safe use of tools, while traditional woodland craft workshops will also be provided.

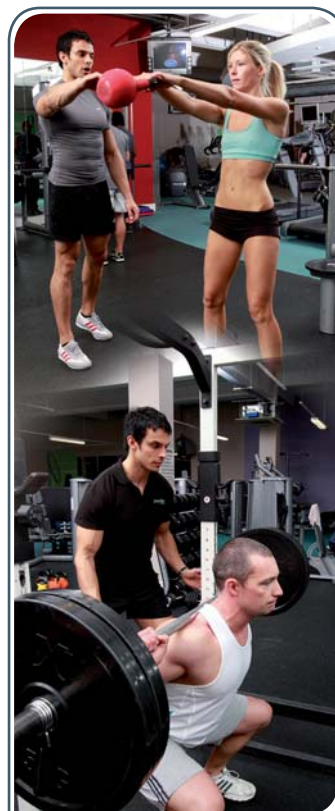


The scheme in Lincolnshire is managed by the Forestry Commission

Hannah Darcel, the Forestry Commission's health and wellbeing ranger, said: "The sessions are all about doing yourself and the environment the world of good. There are loads of tasks that need doing in the woods, from removing

invading plants and trees, restoring heathland, opening up ponds and enhancing historic features.

"People are encouraged to work at their own pace and there's also a real sense of creating new havens for wildlife."



Ripon Leisure Centre to receive new fitness suite

By **Tom Walker**

A fitness suite is to be created at Ripon Leisure Centre, North Yorkshire, as part of a £285,000 scheme funded by Harrogate Borough Council (HBC) and Ripon City Council (RCC).

The venue's original ground floor Brimhams' Fitness Suite, will be developed into a free weights training area as part of the project, which will create one of HBC's largest fitness facilities, boasting 209sq m



The centre is owned by HBC

(2,250sq ft) of gym space. Technogym will supply 36 pieces of equipment for the

new suite. Earlier this year, HBC secured a deal to take over the freehold transfer of Ripon Leisure Centre from RCC, having previously run the venue under a leasehold/management contract. RCC has also provided £125,000 to invest in the centre.

HBC spokesperson, Andrew Jones, said: "We have set up an investment pot to make sure that the equipment at the centre can be renewed at regular intervals."

£850,000 revamp for Berwick leisure centre

Construction work has started on a £850,000 redevelopment of the Swan Centre for Leisure in Berwick-upon-Tweed, Northumberland, which is to be delivered in three stages.

The first phase of the scheme, which is being managed by operator Tees Active, will see Createability convert an existing 500sq m

(5,382sq ft) soft play area into a new 65-station gym equipped with Technogym cv and resistance equipment.

Scheduled for completion by January 2010, stage one also includes a new 800sq m (8,611sq ft) spinning studio, a refurbished coffee area and upgraded changing facilities.

Develop your career with Premier Training.

Courses in:

- ❖ Studio Instruction
- ❖ Medicine Ball Training
- ❖ Kettlebell Training
- ❖ Low Back Pain
- ❖ Nutrition
- ❖ Sports Conditioning
- ❖ Core Stability
- ❖ and many more

0845 1 90 90 90

courses@premierglobal.co.uk

www.premierglobal.co.uk

unleash your potential
premier
TRAINING
international

IN BRIEF

Odeon and UCI to roll out digital theatres

► Odeon & UCI Cinemas Group (OUCG) is to install digital projectors to the remainder of its sites, after securing distribution deals with three leading Hollywood studios. OUCG, Europe's largest cinema chain, which operates the Odeon, UCI and Cinesa brands, already has 187 digital screens within its portfolio. The fitting of the remaining cinemas with digital theatres will cost more than £70m to complete, and be funded over time by a combination of contributions from the three studios as well as the earnings derived from the improved programming offer. The three studios which will part fund the new projectors are Twentieth Century Fox, Paramount Pictures and Walt Disney Studios Motion Pictures international.

Camelot sets deadline for Lottery bids

► Prospective bidders for the majority stake in National Lottery operator Camelot – said to be more than 20 – were told that offers must be in by 18 November. The deadline was extended due to delays in documentation. Four of the five equal shareholders in Camelot – Cadbury, Thales Electronics, De La Rue and Fujitsu – have appointed NM Rothschild and Greenhill & Co. to put their stakes up for sale. The fifth, Royal Mail, says it is not selling although it could decide to sell to a winning bidder once the auction is over. Potential bidders are said to include private equity bodies; foreign lottery operators, such as Sugal & Damani which bid for the current license two years ago; and Sir Richard Branson's Virgin Group, whose People's Lottery bid has lost out twice in the past.

Approval for Lancashire holiday village

Pleasington Lakes development to include 94 holiday lodges and three new lakes

By **Pete Hayman**

Plans for a new holiday village near Blackburn, Lancashire, have been approved by Blackburn with Darwen Borough Council (BDBC) despite local opposition.

The proposed Pleasington Lakes development comprises the creation of three new lakes surrounded by 94 holiday lodges, a members' facility building and a car park.

Manchester-based Castleland's plans for the 46.6 hectare (115-acre) site initially included more than 100 lodges, five lakes, a restaurant and a fitness suite, but were rejected by council planning officials in 2007. However, the developer's planning application has now been approved by BDBC in spite of concerns raised by Tockholes Parish Council, Livesey Parish Council, Pleasington Parish Council, Natural



The plans were approved by the Blackburn with Darwen council

England and the Campaign to Protect Rural England.

A report put before the council's planning committee said: "The scheme represents a major development, which would result in a number of improvements across the site.

"The holiday village is considered to be an acceptable form of development in this location and the revised design and layout of the proposals

overcome previous concerns in relation to the harm to the landscape resulting from the number of lodges."

Developer Michael Lewis said: "We now have the opportunity to create a major tourism facility in a stunning part of the world.

"The views from the site which open over local nature make it an ideal place for people to come and relax."

Entourage club for Manchester

Entourage, a new nightclub which has been designed to incorporate the history and culture of Manchester, has opened its doors to the public in the city's Printworks district on 14 November.

Devised by former general manager of the city's Tiger Tiger, Doug Waldron, the new club offers groups the opportunity to book booths with table service and has cost nearly £1m to fit out, including an £80,000 sound system.

Covering two floors, Entourage has a capacity for 800 people.

Silverstone unveils course plans

By **Tom Walker**

Silverstone has unveiled plans for its new Stowe Complex, an experimental driving and test facility. The focal point of the centre will be a multi-surface 1.15-mile (1.85km) race track, designed to demonstrate chassis control systems like Electronic Stability Programme (ESP) and anti-lock braking system (ABS).

Alongside a split braking area, there will be a three-lane irrigated wet handling pad with different levels of grip, from sheet ice to standard wet tarmac. There will also be two hospitality buildings, built to cater for automotive and corporate events.



The new Stowe complex is expected to open during 2010

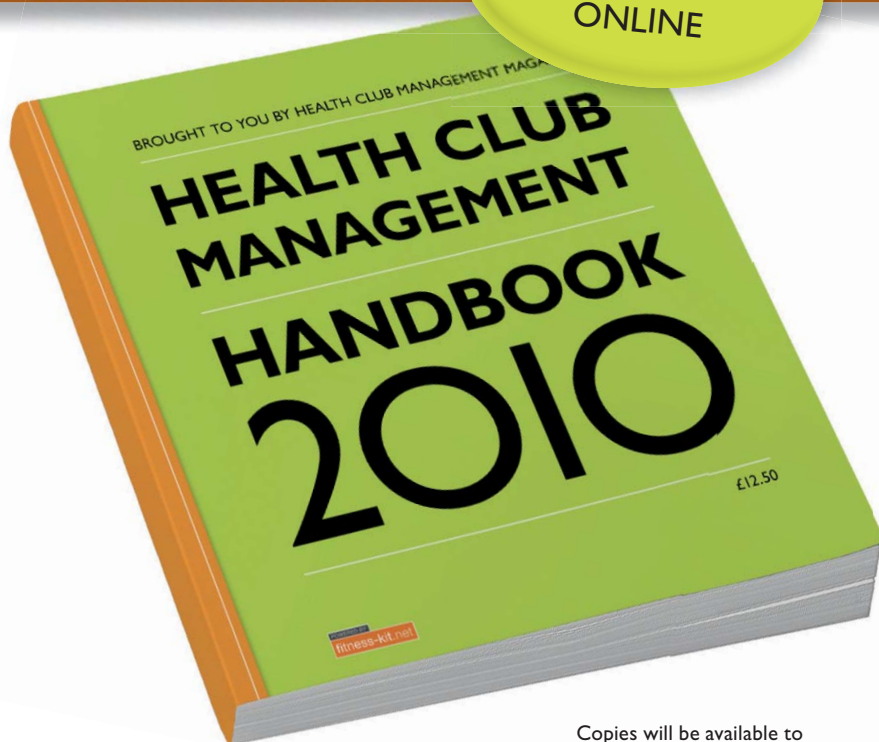
The Stowe Complex is the first phase of a £7m development that will change the configurations of the existing Grand Prix circuit to cater for the Moto GP.

When complete, Silverstone will boast five different track configurations. The Stowe Complex is scheduled to be completed by March 2010.

HEALTH CLUB MANAGEMENT HANDBOOK 2010

AVAILABLE IN
PRINT AND
ONLINE

The 6th edition of the Health Club Management Handbook, published in association with the Fitness Industry Association (FIA), is being distributed in January 2010. The handbook is a comprehensive guide and reference tool distributed to industry suppliers and operators, FIA members and to industry buyers at events such as LIW, SIBEC and IHRSA..



Copies will be available to purchase at £12.50 each and all content will be available online.

WHAT'S IN IT FOR YOU?

FOR INDUSTRY SUPPLIERS

- ◆ Multiple listings of all industry suppliers by:
 - A-Z
 - Phone book
 - Web address book
 - Product selector
- ◆ Company profiles including key information, contact details, images of products and a picture of your company contact
- ◆ Vertical strip adverts in the address book section

FOR INDUSTRY OPERATORS

- ◆ Who's who? of key industry personnel from the private sector, public sector and trade associations.
- ◆ Updated State of the Industry reports
- ◆ Competitive edge – charity events to motivate your staff and members for the year ahead
- ◆ Diary dates – a guide to all industry events, shows and networking opportunities
- ◆ Predictions for 2010 from key industry figures
- ◆ Features and reference material

BOOKING DEADLINE 23RD DECEMBER 2009

TO RESERVE YOUR SPACE IN THE HANDBOOK

CALL: **+44 (0)1462 471385**

OR EMAIL: **DISPLAYSALES@LEISUREMEDIA.COM**

IN BRIEF

Eston pool reopens after revamp

► Eston swimming pool in Middlesbrough has opened its doors following a £200,000 facelift. The work is part of a £2.4m investment in the centre, which is run by Tees Valley Leisure. Upgraded facilities include changing rooms with newly installed cubicles and lockers, new poolside surrounds, a new filtration system and easy access steps for bathers. Refurbishments are also planned for the borough's other leisure sites for 2010 and 2011 as part of the council's long term commitment to improve the region's leisure provision.

South Lanarks. leisure projects on course

► South Lanarkshire Leisure's new leisure facility – South Lanarkshire Lifestyles Lanark – is nearing completion and is set to open in January 2010. The new structure houses a 25m, 6-lane swimming pool with a health suite; a gym; a fitness studio; a Starbucks coffee shop; changing areas and a covered link to the adjacent Harry Smith Complex, an adult day care centre. SLL general manager Gerry Campbell said: "Having all of these new facilities under one roof will encourage customers to try different leisure activities, and perhaps increase overall levels of physical activity."

New community venue set for Middlesbrough

► A new sports and community facility is set to be built as part of a scheme to rejuvenate the Central Whinney Banks in Middlesbrough, after the local authority backed the plans. The new three-storey venue will boast meeting rooms and changing facilities for adjacent sports pitches, as well as space for community activities.

Rugby House unveiled at Twickenham

New extension to national rugby stadium includes 156-room Marriott hotel

By Tom Walker

Rugby House, a new conference and events complex that forms part of the South Stand development at Twickenham Stadium, London, has been officially unveiled by Twickenham Experience Limited (TEL).

The purpose-built facility features an additional 5,000sq m (53,820sq ft) of space for conferences and exhibitions, while the venue's Live Room boasts a stage and tiered seating for 400 people to cater for live performances and presentations.

Receptions for 600 guests can also be accommodated at the Live Room, which forms part of the Rugby House development along with the



The extension will increase the stadium's capacity to host events

Rose Suite – capable of holding dinners for up to 800 people.

Chris Morris, managing director of TEL – a joint venture between the Rugby Football Union and caterer Compass Group said: "Our aim is to ensure that Twickenham

remains the leading player on the international stage."

The development also includes the four-star, 156-bed-room London Marriott Hotel Twickenham, which features six suites overlooking the pitch with balcony access.

Glasgow 2014 preparations 'making progress'

By Tom Walker

Preparations for the 2014 Commonwealth Games in Glasgow are "making progress" but need to be properly managed to ensure costs are kept under control, according to a new report.

Audit Scotland's *Progress report on planning for the delivery of the XXth Commonwealth Games 2014* states that organisers need to ensure all areas of delivery – including



A report on the progress called for tight control on costs

venues, security and ticketing – are brought together in order to manage risks through to the

event and beyond. The report comes just after it was revealed the budget for hosting the 2014 Commonwealth Games has increased to £454m due to uncertainty over the sale of domestic broadcasting rights.

Caroline Gardner, deputy auditor general, said: "In the current economic climate public sector finances are already under pressure and it is essential that the organisers keep all costs tightly under control."

London 2012 Games 'still on time, still on budget'

New figures from the government and the Olympic Delivery Authority (ODA) have shown that the London 2012 Olympic and Paralympic Games will be delivered on time and on budget.

The London 2012 Olympic and Paralympic Games Quarterly Economic Report has seen a £7m increase in the cost of the ODA's construction programme, which equates to an increase of less than 0.1 per cent. However, nothing from the £1.27bn contingency funding has been required to cover the increase due to savings achieved elsewhere as part of ongoing construction of the 2012 venues at the Olympic Park site.

More funding for Ravenscraig scheme

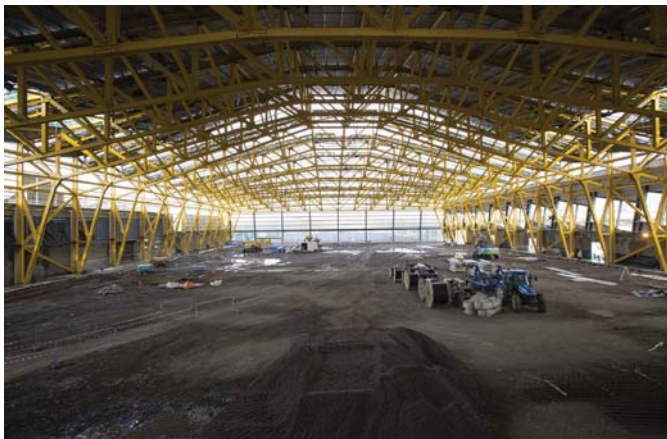
Grant earmarked to kick start second phase of ambitious regeneration plans

By **Pete Hayman**

Scottish Enterprise, North Lanarkshire Council (NLC) and developer Wilson Bowden have agreed to contribute £2m towards the second phase of a scheme to regenerate the former Ravenscraig steelworks.

The funding will be used to help draw up detailed planning briefs for the 450-hectare (1,250-acre) site in central Scotland, which will examine the options for developing a new town centre, an industrial area and a business park.

The £200m first phase of the Ravenscraig scheme has included the construction of a new regional sports facility, boasting a full-size indoor football pitch, a 120m athletics track with field event training



The first phase of the development included a new sports centre

areas and a sports hall. Wilson Bowden and Scottish Enterprise have both contributed £800,000 towards the second phase, along with a £400,000 contribution from the council, which will help to outline future costs of the second phase and

the level of public sector funding required.

Liz Connolly, Scottish Enterprise's operations director, said: "This is a long term project and it is important that all partners involved can evaluate progress."

Kent CCC loan approved

Kent County Cricket Club (KCCC) has been handed a £4m loan to help fund the multi-million pound redevelopment of its St Lawrence Ground, Canterbury, by the local authority.

The club revealed that it approached Canterbury City Council to provide financial support towards the scheme on the grounds it met with a series of economic and wellbeing objectives.

Plans for the redevelopment of the St Lawrence Ground include a hotel, a health and fitness centre, a conference suite and revamped spectator facilities, as well as hospitality boxes.

Government rejects Everton plans



The stadium plans were blocked by the central government

By **Pete Hayman**

Everton Football Club and Tesco have been left "bitterly disappointed" at a decision to reject plans for the transformation of Kirkby, Liverpool, which would have included a new 50,000-seat stadium.

Communities secretary John Denham blocked the scheme, following a public inquiry after Knowsley Council approved planning permission.

In addition to the new stadium, proposals for the Destination Kirkby scheme also included improvements to the town centre, new leisure facilities, a new Tesco Extra superstore, office space and a housing development.

Everton CEO, Robert Elstone, said: "We're all bitterly disappointed with the decision as we felt that we had compiled and presented a most compelling case for the project."

IN BRIEF

Glasgow Rangers posts £31m annual loss

► Glasgow Rangers Football Club (GRFC) has insisted that there is no need to sell players in the January transfer window, despite reporting a £31m loss for the year ending 30 June 2009. Compared with the previous 12 months, the Scottish Premier League champion's turnover fell by 38 per cent due to a lack of participation in European competitions and a decline in ticketing and hospitality revenue caused by a 19-match reduction during the 2009-09 season.

Burnley FC optimistic despite £8.9m loss

► Burnley Football Club (BFC) has revealed that it expects promotion to the Premier League to generate more than £30m, helping to offset losses of £8.9m for the year ending 30 June 2009. The club's match-related income increased by 47 per cent for the 2008-09 season as a result of extended runs in both the FA Cup and Carling Cup tournaments, as well as reaching the Coca-Cola Championship playoff final. BFC chair Barry Kilby also confirmed that plans for the redevelopment of the club's Turf Moor stadium could be revisited if Premier League survival is secured, after the scheme was shelved due to the economic downturn at the start of 2009.

New £800,000 pavilion for Woodmansterne

► A new £800,000 pavilion has been unveiled by Reigate and Banstead Borough Council in Woodmansterne, Surrey, as part of a wider scheme to improve leisure facilities across the area. The new complex, which will be used by Woodmansterne Sports Club to replace its former building, features a six-team changing room with disabled access.

IN BRIEF

New scheme to promote the Heart of England

► A joint marketing campaign – Heart of England Adventures – has been launched in a bid to promote a number of visitor attractions across the West Midlands region. The Key Attractions Group (KAG), which was set up in 2008, is comprised of a range of tourist destinations, including Ironbridge Gorge Museums, Alton Towers, Drayton Manor Theme Park, Warwick Castle and Cadbury World. Visitors will be provided with travel advice, ticket information and offers as part of the new campaign, which is being funded by KAG and the regional development agency, Advantage West Midlands.

Temporary exhibition opens at Austen centre

► A temporary exhibition showcasing how Christmas was celebrated two centuries ago has opened at the Jane Austen Centre in Bath. The centre is running a special exhibition which gives a glimpse into how the famous writer and her family enjoyed the holiday season, including the types of food eaten, games played and how they decorated their home. Regency Christmas at the Jane Austen Centre runs between 21 November 2009 and 3 January 2010.

Hastings Pier deal collapses

► The future of a historic pier in Hastings, East Sussex, remains uncertain after the owners of the Grand Pier in Weston-super-Mare, Somerset, pulled out of a deal to acquire the attraction. Kerry and Michelle Michael of Grand Pier Limited, which is currently redeveloping of Weston-super-Mare's Grand Pier, decided not to go ahead with the purchase due to the £24m cost of restoring the pier.

Jewish museum reopening delayed

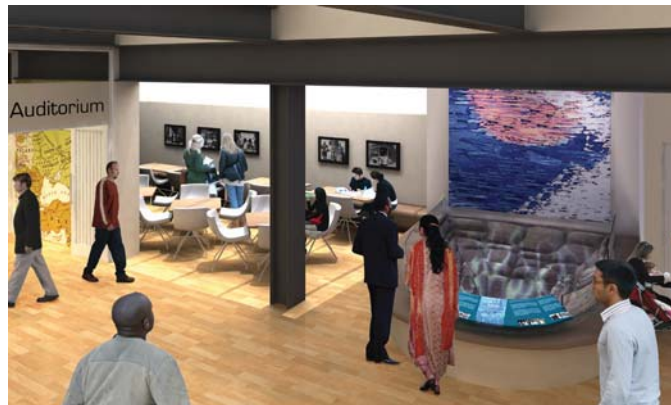
Heritage attraction to relaunch in March 2010 following £4.3m redevelopment

By **Tom Walker**

The Jewish Museum London will reopen to the public on Wednesday 17 March 2010, four months later than originally planned.

The museum, located in Camden Town, has undergone a £10m redevelopment which has resulted in the museum tripling in space in order to accommodate its collections, which are currently housed at two separate sites in Camden and Finchley. The revamp, funded partly by a £4.3m grant from the Heritage Lottery Fund, has divided the museum into five galleries, with four permanent ones and one earmarked for temporary and touring exhibitions.

The Welcome gallery will include a multimedia installation, highlighting the background of Jewish people living



The museum will boast five galleries depicting Jewish history

in Britain today, and a mikveh (a ritual bath) dating to the medieval period.

The other new galleries are the History Gallery, which includes an interactive exhibition exploring the history of British Jews; the Religion Gallery, which explores Jewish ethics and values; a special exhibitions gallery for travelling exhibits; and the Holocaust

Education Gallery. Other additions will include a 100-seat auditorium, an educational suite for children, a research library and shop.

When open, the museum is expected to attract more than 165,000 visitors a year. Founded initially in London's Bloomsbury in 1932, the Jewish Museum relocated to its current location in a listed property in 1995.

New exhibition for Cornish museum

The National Maritime Museum Cornwall (NMM) is to launch a major new exhibition on lighthouses in the new year.

Called Lighthouses: Life on the Rocks, the exhibition opens in February 2010 and will run for two years.

The installation's artefacts will include old sketchbooks and photos taken by former lighthouse keepers, as well as large objects, including solid bronze doors from the Bishop Rock lighthouse and a four-tonne optic used to reflect light from the tower.

Part funded by a £30,000 grant from the Heritage Lottery Fund, the exhibition was designed by Falmouth-based Gendall Design.

New museum projects for Mivan

By **Martin Nash**

Interiors and theming company Mivan has secured two major museum fit-out projects – the new £4.4m Glasgow Riverside Museum contract and a £1.6m project at the Museum of the Order of St John in London.

The Glasgow project will be Mivan's largest assignment since it worked on the Museum of Islamic Art in Doha, Qatar and the company will be supplying and installing a range of exhibition systems, street scenes and displays throughout the new building.

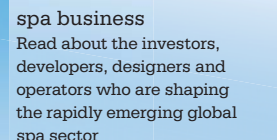
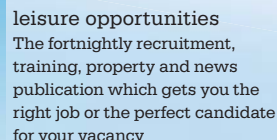
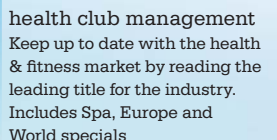
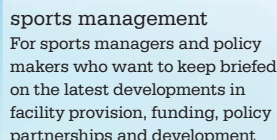
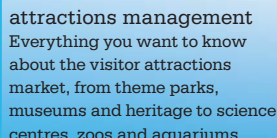
It will be working in partnership with Culture and Sport Glasgow and the city council to realise the designs of Event Communications.



Mivan's brief will include creating street scenes

The museum – designed by Zaha Hadid – is being built at a cost of £74m, with £18.1m of funding coming from the Heritage Lottery Fund. It has been designed to celebrate Glasgow's contribution to the world of travel and transport and, situated at the heart of the Glasgow Harbour development, is due to open in spring 2011.

Our p



Alternatively call our subline +44 (0)1462 471915 or fill out the form below and fax back to +44 (0)1462 433909

Attractions Management <input type="checkbox"/> UK £34, EU £45, Int £65, Student £17 *Add Leisure Opportunities for £10 (UK only) <input type="checkbox"/>	Leisure Management <input type="checkbox"/> UK £38, EU £49, Int £69, Student £19 *Add Leisure Opportunities for £10 (UK only) <input type="checkbox"/>	Health Club Management <input type="checkbox"/> UK £41, EU £52, Int £73, Student £20 *Add Leisure Opportunities for £10 (UK only) <input type="checkbox"/>	Spa Business <input type="checkbox"/> UK £28, EU £38, Int £38, US/Canada £28 Student £18 *Add Leisure Opportunities for £10 (UK only) <input type="checkbox"/>	Sports Management <input type="checkbox"/> UK £27, EU £37, Int £58, Student £13 *Add Leisure Opportunities for £10 (UK only) <input type="checkbox"/>	Leisure Opportunities <input type="checkbox"/> Standalone subscription: UK £31 EU £41, Int £62, Student £16
--	--	--	---	---	--

☐ **Cheque** (in £ sterling – please make payable to the Leisure Media Company Limited and post to the following address: Subscriptions, The Leisure Media Company Limited, Portmill House, Portmill Lane, Hitchin, Herts SG5 1DJ)

Address:

Tel: Fax: Email:

IN BRIEF

TRG planning 20 new openings next year

► The Restaurant Group (TRG) has continued to trade in line with expectations, with like-for-like sales currently 3 per cent down on the same period last year and total turnover up 4 per cent. Announcing its trading update for the 46 weeks to 15 November, TRG reported that it had opened 17 new restaurants so far this year, with another 15 to 20 new openings expected next year. Looking ahead to 2010, TRG expects trading conditions to remain tough for the sector, with tax rises, fuel price increases and the threat of higher unemployment all potentially impacting on consumer spending. However, it believes its strong brands and value-for-money offer will allow it to continue trading profitably.

'Testing year' hits Enterprise Inns profits

► UK pub company Enterprise Inns has said that a "very testing year" is to be blamed for a 21 per cent decline in pre-tax profits for the 12 months ending 30 September 2009. Compared with the previous year, the operator of 7,399 tenanted and leased pubs across the country saw a 13 per cent decrease in EBITDA to £445m as a result of increasing overhead costs and alcohol duty.

New owner for Shendish Manor Hotel

► Shendish Manor Hotel near Hemel Hempstead, Hertfordshire, has been acquired by the owners of the Manor of Groves Hotel, Golf and Country Club in High Wych, near Sawbridgeworth. The original manor house at Shendish Manor has been refurbished to provide 18 suites and rooms, including the bridal suite, while a new wing built in 2007 offers a further 52 bedrooms. Shendish Manor Hotel also boasts a par 70, 18-hole golf course.

Chipotle Mexican Grill enters London

US chain to begin European expansion by opening site in London's West End

By **Martin Nash**

The Denver, US-based burrito restaurant chain Chipotle Mexican Grill is to open its first location in the UK.

Design and building plans are currently being finalised for a site at 114-116 Charing Cross Road in London's West End, which is scheduled to open in April next year. It will also be the company's first in Europe.

Steve Ells – founder, chair and co-ceo of Chipotle – said: "London has become an important food city over the years, especially because of the awareness of and desire for things like locally sourced, seasonal and artisanal ingredients. These are all core values of Chipotle. We call it 'Food with Integrity' and it is how we



The chain will serve a range of Mexican foods, including burritos

are changing the way people think about fast food.

"We believe Londoners will appreciate our efforts to serve food that is raised right and in a way that is so accessible."

In the US, Chipotle claims to be one of the only restaurant chains committed to serving

food made with ingredients from sustainable sources.

Ells added that, beyond the group's interest in the UK, it has looked at sites in both Paris and Munich but has neither identified specific sites nor released time lines for such expansion.

Tough times for Irish restaurants

The Restaurants Association of Ireland (RAI) has revealed that more than 80 per cent of eateries across the country are currently running at a loss, threatening the long-term viability of the sector.

A new 10-point 'survival plan' has been unveiled by the organisation, which aims to protect an industry that contributes around €2bn (£1.8bn) to the Irish economy each year and accounts for a quarter of all Irish tourism jobs.

RAI's plans include calling for a reduction in the Irish national minimum wage, reduced local authority charges and the development of a dedicated restaurant division at Fáilte Ireland.

Galvin La Chapelle set for launch



The restaurant will be owned by brothers Jeff and Chris Galvin

By **Pete Hayman**

London-based restaurateurs, the Galvin Brothers, launched their latest venture – Galvin La Chapelle and Café de Luxe – at the capital's Spital Square on 18 November.

The new venture includes the Galvin La Chapelle restaurant, which is housed within the converted 19th century, Grade II-listed St Botolph's Hall dating back to the 19th century and

boasting 30m (98.4ft)-high ceilings. Meanwhile, Café de Luxe will act as an all-day café and bar, with a 6m (19.7ft)-long pewter bar originally commissioned by Sir Terence Conran for the Aurora restaurant at the Great Eastern Hotel, as well as outdoor seating opening onto Bishop's Square.

Jeff Galvin said: "We wanted to create a place which everyone in the area can call their own and feel at home."



The property used to house the Royal Scottish Automobile Club

Blythswood hotel opens

Former automobile club building reopens as hotel

By **Martin Nash**

Blythswood Square, a five star hotel housed in the former Royal Scottish Automobile Club (RSAC) building in Glasgow, Scotland, has opened.

The £25m redevelopment of one of the city's most iconic buildings has been carried out by boutique hotel group, The Town House Collection. The opening is around 12 months later than originally planned and marks the first of a three phase opening which will run into the New Year. Overlooking urban green spaces, the hotel

offers 100 bedrooms including six suites and a top floor penthouse complete with rooftop hot tub. It will also house Glasgow's first luxury spa offering indigenous Scottish treatments, a 120-cover restaurant created from the RSAC's ballroom, bars, a private screening room and event facilities.

Other highlights of the hotel include a 35m salon featuring two original fireplaces and a private screening room which will be furnished with more than 40 individual designs of Harris Tweed.

Cairn acquires Newcastle's Imperial

Privately owned hotel operator Cairn Hotel Group has acquired the Imperial Hotel in Newcastle-upon-Tyne from F&C Reit Asset Management for an undisclosed sum.

Formerly operating under the Swallow brand, the 122-bedroom hotel's facilities include the 80-cover Chapters Restaurant; the 50-cover Library Bar; seven conferencing and meeting rooms; and a

fitness club with a swimming pool and spa bath.

The Cairn Hotel Group currently operates 16 hotels across England and Scotland, including the Barkston Gardens Hotel in Earl's Court, London; the Royal British Hotel in central Edinburgh; and the Gardens Hotel in the heart of Manchester. The company plans to invest a substantial sum to re-position the hotel.

When will the government get it?

With another set of red tape to hit our sector, 2010 could be more challenging than 2009

The recent Best Western Investment conference showed the independent hotel sector to be in good heart, determined to expand and develop in what is generally considered to be a difficult sector in which to operate. A quick glance at the entries for the 2010 Hotel Excellence Awards 2010 – the winners will be announced in the New Year – also emphasizes the fact that action taken to solve a problem has typically led to higher occupancies, higher yields and higher profits even in these difficult times.

All this during the deepest recession in a generation. Yet there's no doubt that trading is still difficult. No-one knows whether consumer spending will pick up in 2010. There are just too many unknowns for accurate prediction but what is certain is that costs are continuing to rise – and almost all have been caused by government decisions and regulations. The level of VAT is about to increase back to 17.5 per cent in January – who knows what level it might reach after the new government takes office?

National Insurance rates are due to increase in 2011. The National Minimum Wage rises every year – dragging other wage rates up in its wake; as a result all payroll costs are constantly forced upwards by government pressure. Business rates are rising significantly next year. There are plans for four weeks paternity leave from birth for fathers; only the recession prevented the current nine-month maternity leave turning into 12 months.

It is inconceivable that the government does not recognise that all these costs represent an additional burden on businesses that are still fighting a recession.

The hospitality industry – and hotels in particular – may have come through it so far in reasonably good shape but only by cutting costs to the bone, reducing jobs and offering special deals to boost demand (but at much reduced margins).

Now, these new government measures are about to impose yet more new burdens on those operators who have so far survived the downturn through their own talent and ingenuity. Can this continue?

Without government understanding – and a moratorium on more regulations that just add cost for seemingly little benefit – the next 12 months could be more critical than 2009.



BOB COTTON is chief executive of the BHA. *Leisure Opportunities* is a member benefit of the BHA, for your free copy call 01462 471932

IN BRIEF

£21.5m film complex opens in Leicester

► A new £21.5m film and digital media centre has opened its doors in Leicester and has been designed to complement the city's new Curve theatre and the LCB Depot. Nottingham-based property firm Blueprint, Phoenix Arts and Leicester City Council (LCC) have worked in collaboration with De Montfort University (DMU) on the project, which includes two purpose-built 3D cinemas and a café bar. A housing development, 22 workspaces, office studios and eight 'incubation units' for creative industries also form part of the scheme, along with the DMU Cube – an interactive digital art gallery. Funding for the scheme came from a range of sources, including the European Regional Development Fund, DMU, East Midlands Development Agency and Arts Council England, as well as LCC.

Brighton and Hove withdraws culture bid

► Brighton and Hove City Council has revealed that the city has withdrawn from the race to become the UK's first City of Culture in 2013. A special meeting of the city's Art Commission – comprising members of the council and leading cultural organisation – decided that it would not be suitable to "put too much emphasis on one year's events". The city had prepared an initial bid but will not hand in its final proposal by the 11 December deadline, following the commission's ruling. Jackie Lythell, chair of the Art Commission, said: "This is just not the right vehicle for the city at the moment – we already have a full calendar of cultural events to work with and we are all looking toward to making the most out of 2012."

Revamped arts centre opens in Cardiff

Gallery areas and theatre space redeveloped as part of 16-month refurbishment

By **Pete Hayman**

Chapter Arts Centre in Canton, Cardiff, has been relaunched, following the completion of a £3.8m refurbishment scheme designed by London-based architects Ash Sakula.

Llanelli-based WRW Group acted as main contractor on the 16-month revamp, which included the transformation of the venue's front and rear entrances and the refurbishment of the cinema, theatre and gallery area.

The work was funded by a £1.75m award from the Arts Council of Wales, a £172,000 grant from the European Regional Development Fund and £850,000 from the Welsh Assembly Government.



The refurbished arts facility was designed by Ash Sakula Architects

A new 60ft (18.3m) lightbox now spans the main entrance and the café bar has been expanded into the old outdoor terrace to increase internal space by 40 per cent as part of the scheme, which has drawn on three main influences.

Chapter Arts Centre's school heritage and sustainability have all been placed at the heart of the refurbished venue, which now boasts the Dutch table area, which will be used for meetings and debates, and the Cwtch, a smaller work space.

Arts Council England publishes new RFO criteria

By **Pete Hayman**

Arts Council England (ACE), which distributes around £350m to regularly funded organisations (RFOs), has published the criteria it will use to help decide where to direct regular investment.

Two sets of criteria aim to provide improved clarity and transparency about how funding decisions are made: the first to determine whether the arts organisation is



The criteria will determine how ACE distributes regular funding

well-managed, and the second to ensure it fits in with ACE's overall strategy.

The first set of criteria, which relate to the arts organisation itself, will determine whether it displays a number of qualities, including the excellence and innovation of its work, how it engages with people and its financial sustainability.

To fit into ACE's overall arts infrastructure, organisations will also have to demonstrate diversity of cultures and communities, while other factors also include previous investment levels.

Liverpool unveils bid for UNESCO City of Music status

Liverpool City Council has revealed that it is leading the city's bid to be selected as England's first UNESCO City of Music, following its success as the 2008 European Capital of Culture.

The council is working alongside the Royal Liverpool Philharmonic and a range of other key music organisations in the city as part of

the bid, which saw a steering group meet for the first time at the end of November.

Liverpool's Lord Mayor will officially launch the bid by writing to UNESCO, which has already designated the city as a World Heritage City and would see it become just one of four cities of music across the world.



Sport Industry
Research Centre



SPORT AND LEISURE STATISTICS

FORECASTS FOR THE SPORT AND LEISURE INDUSTRIES

The Sport Industry Research Centre publishes two annual reports, Leisure Forecasts and Sport Market Forecasts. These reports provide valuable insight into future market trends.

Both publications are essential references for industry practitioners, consultants and researchers.

Leisure Forecasts

This publication identifies the way in which economic trends, new technologies and new consumer priorities will shape the leisure industry over the next five years. It is divided into two sectors, leisure in the home and leisure away from home, providing analysis for 24 distinct leisure markets.

Sport Market Forecasts

This publication is produced in conjunction with Sport England. It provides detailed economic information on consumer spending for the entire sports market. It is divided into sport goods and sport services, providing economic analysis for 10 sport markets.

Our forecasts are a valuable resource for data related to

- travel and tourism industry
- exploring the leisure industry
- hospitality in leisure and recreation
- visitor attractions
- eating and drinking
- local entertainment
- computer games
- home entertainment
- the sport industry
- health and fitness
- sports participation
- sport equipment
- sport clothing and footwear

To find out more please visit

www.shu.ac.uk/ad/sportandleisure

Or contact

Susie Shaw

Phone 0114 225 5919

Fax 0114 225 4341

Email s.shaw@shu.ac.uk



**Sheffield
Hallam University**



**SPORT
ENGLAND**

IN BRIEF

Winter overhaul for Ashton Locks

► Ashton Canal in Manchester is to benefit from a £60,000 programme of essential works by British Waterways (BW). The maintenance, part of BW's winter programme of network improvements, will include the replacement of three sets of head gates along the canal at locks 10, 11 and 12, as well as general grouting repairs to the locks.

Phase two Preston parks scheme underway

► Work has got underway on the second phase of a scheme to restore Avenham and Miller Parks in Preston to original 1860s designs drawn up by landscape architect Edward Milner. Nearly 500 new trees will be planted and 73 diseased trees will be removed as part of the project, while an additional 19 trees will also be removed in order to fit in with the designs for the new-look parks. The second stage of the scheme, which has received a £1.75m grant from the Heritage Lottery Fund, is set to be completed in November 2010.

Bathing water quality results unveiled

► Nearly all bathing waters around the English and Welsh coast adhere to the European Commission's (EC) mandatory standards for 2009, according to new results published by the government. Statistics from the Department for Environment, Food and Rural Affairs and the Welsh Assembly revealed more than 98 per cent of waters passed water quality tests, while 82.2 per cent met the stricter EC guideline standard. The Environment Agency conducted a total of 29,700 water quality tests at nearly 500 bathing waters during 2009, while new technology is to be used to help discover the source of pollution.

Work starts on Bury woodland scheme

£3.8m initiative to include 7.5 miles of leisure trails for cyclists and walkers

By **Pete Hayman**

A new 71-hectare (175-acre) community woodland is set to be created in Bury, Greater Manchester, as part of a £3.8m regeneration scheme incorporating the town's Waterdale and Drinkwater parks.

The Forestry Commission has started work on a former industrial site between Prestwich and Clifton to improve the local environment and create a number of new recreational facilities, including 12km (7.5 miles) of leisure trails.

Work on multi-purpose waymarked trails, which will be used by walkers, horse riders and cyclists, is set to get underway next month, while plans also include wetland wildlife habitats and fishing ponds. A new mountain bike



The scheme incorporates the Waterdale and Drinkwater parks

track, the illumination of a viaduct running through the site and the introduction of information signs outlining the area's history are also set to feature as part of the community woodland.

Funding for the woodland, which will form part of a major community woodland across

Salford, Manchester and Bury, is being contributed to by the Newlands initiative – a £59m land regeneration scheme.

The Forestry Commission's Richard Topley said: "There will be plenty of opportunities for everyone to enjoy the outdoors, whether it's cycling, running, fishing or horse-riding."

Green light for Heartwood Forest initiative

By **Pete Hayman**

Planting is set to get underway on the creation of a new 347-hectare (858-acre) native woodland near St Albans, Hertfordshire, after the scheme was given the go ahead by the Forestry Commission.

The commission has approved an environment statement submitted earlier this year by the Woodland Trust, which will see more than 600,000 native broadleaf trees planted as part of the Heartwood Forest scheme.

Heartwood Forest will be the largest site in England operated by the Woodland Trust, providing publicly accessible green space for more than 250,000 people living within a 10km (6.2-mile) radius, as well as a hub



The Woodland Trust hopes to create a hub for leisure pursuits

for active recreation and leisure pursuits.

Toby Bancroft, Heartwood project manager, said: "We propose to retain views at key points, with most planting scheduled for the main ridge and site plateau, creating a wood pasture effect on lower slopes and graded woodland

edges lessening the impact from roads and human activity.

"Our environment statement consent by the Forestry Commission was a culmination of comments, opinions and consideration of issues, raised with the local population and a wide range of organisations to help shape proposals."

Chichester District Council



Health & Community Wellbeing

Tenders are invited for the construction of a new concrete Skate Park

Chichester District Council invites tenders from suitably experienced contractors for the design, supply and construction of a new concrete Skate Park, at Westgate Leisure Centre, Chichester, West Sussex.

Parties who wish to tender will be sent a detailed specification and will be required to complete a tender form and questionnaire, which must be returned, as directed by 12 noon on 20th January 2010.

For further information and requests for the specification and tender form please contact :

Amy Roots

Community Sport Development Officer

**Chichester District Council, East Pallant House,
1 East Pallant, Chichester, West Sussex PO19 1TY**

Telephone 01243 534871

Fax 01243 534792

Email: aroots@chichester.gov.uk



INVESTOR IN PEOPLE



Proposed new leisure opportunity at Cotlandswick Open Space, St Albans

Potential Future Development (c. 0.71 ha)

Proposed Leisure Development (c. 4.1 ha)

Further to a Contract Notice placed in OJEU on 26 November 2009 (OJEU ref: 09/S 228-327492/EN), St Albans City and District Council (SACDC) is seeking expressions of interest from potential partners to deliver a new leisure development, with access for public use.

Potential development partners will be encouraged to suggest commercial uses that maximise viability, whilst including provision for community accessible facilities. Expressions of interest are invited from operators, contractors and developers, acting both independently or as a consortium.

To express an interest in the opportunity and to request a brochure and Pre-Qualification Questionnaire, please email cotlandswick@driversjonas.com stating your name, company name and contact details, or alternatively, please call 020 7896 7768.



St Albans
City & District Council



Expressions of Interest: Leisure Contract

Hastings is at the heart of a multi-million pound regeneration programme. The Jerwood Art Gallery and outdoor performance space planned for its seafront will not only be a major boost to the town's cultural offer but also an enduring symbol of the extraordinary progress we're making in this unique corner of South East England. Within this exciting context we're looking for expressions of interest in operating and managing our leisure facilities after the existing contract ends in November 2010.

You will join us in a partnership arrangement that will see investment in the Summerfields Leisure Centre and Falaise Fitness Centre near Hastings Town Centre. There is also a dual use centre at Hillcrest School on the town's outskirts. Over the course of the contract, we will:

- Maintain a high quality, safe, accessible and sustainable leisure management service.
- Work with the Healthier Hastings Partnership to meet local and national targets for participation and health improvement across Hastings & St Leonards
- Embrace sports development and agree local sports development plans and initiatives
- Progress our draft facilities strategy to replace and/or upgrade our main leisure assets
- Improve the 'value for money' achieved from the leisure contract through efficiencies in facility management
- Develop services to meet the needs of local black and minority ethnic groups and young people and commit to the equality and inclusion objectives of our organisation
- Commit to continuous improvement in delivering services including participation in a nationally recognised leisure quality assessment scheme and E-Government initiatives
- Comply with all statutes and codes of practice relevant to the service

Companies, Trusts or other organisations with the relevant skills, expertise and financial standing can apply for shortlisting via an initial questionnaire through Martin Etchells on 01242 451103 or metchells@hastings.gov.uk

Closing date: 24 December 2009. Quote ref: 09/S225-323219/EN

Completed questionnaires must be returned by noon on 4 January 2010



www.hastings.gov.uk



Lee Valley Regional Park – Corporate Electronic Leisure Management System

Lee Valley Regional Park Authority is seeking Expressions of Interest (E.O.I.) for the provision for a Corporate Electronic Leisure Management System.

The Contract will run for three years, beginning on 1 May 2010, with an option to extend for a maximum of a further two years.

Potential suppliers will be assessed on their ability to implement and deliver an Electronic Leisure Management software system for thirteen existing venues and services, and three new London 2012 Games venues which we will own, fund and manage in legacy. The award criteria within the tender documentation will be based on value for money, quality, availability of specialist staff, a proven track record in delivering and implementing Leisure Management Systems, and to the degree to which the proposed contractor satisfies the Authority's requirements determined by the tender submission.

Organisations interested in applying for this work should submit the Pre-Qualification Questionnaire (PQQ), contract reference 'LVRPA171S1001' which can be found at www.leevalleypark.org.uk/procurement

If successful at this stage you will be invited to submit a formal tender submission.

The Pre-Qualification Questionnaire must be submitted by noon Thursday 14 January 2010 to the address below.

Matthew Jones - Procurement

LVRPA171S1001: ELMS PQQ

Lee Valley Regional Park Authority,

Myddelton House, Bulls Cross, Enfield, Middlesex, EN2 9HG

Telephone: 01992 717 711

Email: procurement@leevalleypark.org.uk

leisure property news

Visit leisureproperty.com for the latest news on Properties, developments, tenders and investment.

IN BRIEF

Legal dispute over Bath Spa resolved

► A statement issued jointly by the three parties involved has indicated that the long running litigation over the Bath Spa project has been resolved. Following mediation between Bath & North East Somerset Council (B&NES); Carillion (which owns Mowlem, the main contractor on the project); and Nicholas Grimshaw & Partners (NGP), the project architect, the three sides have agreed to a settlement. The agreement provides for net payments to be made to the council towards its spa-related costs by both Carillion and NGP. The payment by Carillion takes account of its own financial claim against B&NES. The statement concludes that "all three parties agree that the settlement reflects a sensible recognition of the costs and uncertainties associated with pursuing litigation."

Mantis acquires Lord Milner Hotel

► Finisterre Holdings has sold the leasehold interest of the five-star Lord Milner boutique hotel in Central London to Adrian Gardiner, owner of the Mantis Group, for an undisclosed sum. The Mantis Group currently operates the five-star Draycott Hotel, situated between Chelsea and Knightsbridge, which it acquired in 2007, and a number of game reserves, boutique hotels and retreats throughout South Africa and Europe. Located in the heart of London's Belgravia, the 11-bedroom Lord Milner Hotel is named after Lord Alfred Milner, 1st Viscount Milner, the controversial British statesman and colonial administrator.

Camberwell Baths plans approved

Local authority shows green light to £3m scheme to overhaul Grade II-listed baths

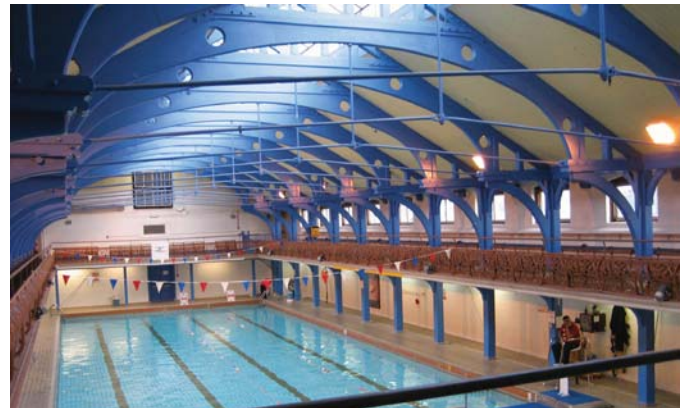
By **Pete Hayman**

London-based architects Watkins Gray International's plans for the regeneration of the historic Camberwell Baths have been given the green light by the local authority.

The London Borough of Southwark has approved planning consent for the first phase of a £3m scheme to overhaul the Grade II-listed baths, which will include repairs to the pool and sports hall and major upgrade works.

Facilities at the refurbished 4,000sq m (43,056sq ft) complex will include a café, a crèche, office space and youth areas, such as a youth music centre, as well as a new entrance hall and new lifts.

The plans also include retaining Camberwell Baths'



Improvements at the baths will include the upgrading of the pool

original frontage, although one entrance will close to create a single main entrance. Shop spaces within the existing glazed partitions of the entrance will be created and modern changing areas introduced.

Roy Caddick, a partner at Watkins Gray International,

said: "Camberwell Baths is an historic and characterful building, and should provide an important health and fitness service in a relatively deprived area of London. Unfortunately, the facility has been in a poor state of repair, and in order to safeguard its future, certain upgrades will be vital."

€430m complex for Dundalk

By **Tom Walker**

An application for a €430m (£387.4m) snow complex in Dundalk, Ireland, is to be submitted to Louth County Council. The Altitude project – proposed by local firm Innovative Leisure Systems and the UK-based Briton Engineering – will include a ski slope and nursery slopes; and a 100-bed-room family hotel.

Plans for the complex also include a 110,000sq ft (10,000sq m) indoor concert arena; an 80,000sq ft (7,400sq m) leisure zone, which includes a cinema and bowling alley; and a surf and water leisure



The plans for the complex include an indoor ski slope

dome, as well as a range of restaurants and bars.

Later phases will include additional hotel accommodation and, once relevant legislation is in place, an international casino.

Water polo arena named

London-based David Morley Architects (DMA) has been appointed by the Olympic Delivery Authority to draw up designs for a new water polo arena, which will be used at the 2012 Games.

The temporary venue, which will provide seating capacity for 5,000 spectators and a warm-up pool, will be located alongside the permanent Aquatics Centre and will act as a gateway to the Olympic Park site. Construction work is scheduled to start in spring 2011.

KnightFrank.co.uk



On the instructions of
Southampton City Council



Mixed Use Development Opportunity to incorporate real-snow indoor ski facility

Site area approximately 8.07 ha (19.95 acres)

For further information go to
www.knightfranksites.co.uk/towndepotsite
or OJEU reference 334652-2009

Contact:

guy.ingham@knightfrank.com
+44 (0)207 861 5389

george.barnes@knightfrank.com
+44 (0)207 861 5387

property & tenders

Hospitality & Leisure

Specialist Property Services

**Valuations, Sales, Aquisitions,
Rent Reviews, Expert Witness.**

Contact: Colin White
colin.white@edwardsymmons.com

London • Bristol • Leeds • Liverpool • Manchester • Plymouth • Southampton

**Edward
Symmons**

020 7344 4500
www.edwardsymmons.com

Rating • Planning & Site Licensing

**CHARLES
F.JONES & Son**
LLP
CHARTERED SURVEYORS

**Leading Professional Advisors
to the Leisure Industry
for over 70 years**

Charles F Jones & Son LLP

01244 328141 www.cfj.co.uk

16 Grosvenor Court Foregate Street Chester CH1 1HN

Valuations • Sales & Acquisitions

directory

UK and international
property experts
covering all sectors
of the leisure industry

Alan Plumb
+44 (0) 1865 269000
aplumb@savills.com
savills.co.uk/leisure



HIL HUMBERTS LEISURE

specialist professional
leisure property expertise

- Sales
- Rent reviews
- Lease renewals
- Consultancy
- Planning
- Arbitrations
- Expert witness
- Viability & feasibility
- Purchases
- Rating
- Valuations
- Funding

London +44 (0)20 7629 6700 South +44 (0)1962 835 960
North +44 (0)1756 799 271 South East +44 (0)1273 325 911
South West & Wales +44 (0)29 2022 6892

www.humberts-leisure.com

Weathering the financial storm

Latest figures show that tourism is still prospering



SANDIE DAWE is
chief executive
of VisitBritain

Tourism has shown this year that it can be an economic driver to lift Britain out of the recession. We have bucked the trend on leisure tourism with inbound visits up 3 per cent and domestic holiday trips up 18 per cent between January and August.

The weak pound and the relative strength of the dollar and euro presented VisitBritain with a golden opportunity and we have worked with carriers who have offered great deals to inspire people travelling to Britain.

Our other activity has included working with global marketing partners to leverage British brands. This work extends the reach of our destination marketing to new consumers – our agreement with the Premier League exploits the global appeal of football to promote our cities and regions that are home to Premier League clubs. And we have built on our digital expertise, receiving 26 million visits to our family of websites and extending our reach by distributing our content into major sites, such as Google Street View and Yahoo!

Looking forward, recent figures suggest that Britain's tourism reached a turning point over the summer, with inbound tourism returning to growth during the final months of 2009.

For 2010, we forecast that the volume of inbound tourism will remain pretty static at 30.4 million, with inbound visitor spending rising to £17.1 billion, an increase of nearly 4 per cent on 2009. If sterling remains weak we may see a steeper increase in visitor spending than expected.

Tourism showing signs of growth

More than 9 million people visited the UK during the first nine months

By **Martin Nash**

Provisional figures from the International Passenger Survey appear to indicate that Britain's tourism industry reached a turning point during the key summer months.

VisitBritain commented that the trend seen in the summer with increasing numbers of overseas residents choosing to visit the UK is likely to continue to the end of the year, mostly due to a favourable exchange rate with the euro.

The figures show that in the first nine months of 2009, overseas residents made nearly 23 million visits to the UK and spent £12.5bn. While the number of visits is 8 per cent down compared to 2008, visitor spend is unchanged due to strong growth in how much. During the vital summer months of July to September, 3 per cent more international visitors holidayed in Britain than over the same period in 2008,



More people holidayed in Britain in 2009

equivalent to 100,000 additional holiday-makers. Figures for the first nine months of 2009 show that Britain welcomed more than 9 million holiday visitors.

The North American market is recovering too, with a 6 per cent growth in total visits during the three months to September.

'Line of light' planned for Hadrian's Wall

By **Pete Hayman**



The line will stretch along the wall's length

Hadrian's Wall Heritage (HWH) has announced plans to create a 'line of light' along the length of the World Heritage Site between Wallsend, Tyne and Wear, and Bowness-on-Solway, Cumbria.

Around 500 points of light will be placed 250m (820ft) apart, following the 84-mile (135km) Hadrian's Wall Path National Trail.

Led by HWH, the project will complement a wider programme of events and activities drawn up by culture10 in North East England and Lakes Alive.

London mayor outlines marketing benefits

The 'Only in London' campaign, designed to promote the capital as a visitor destination, boosted the economy by £50m, according to mayor Boris Johnson.

Johnson also unveiled plans to invest a further £400,000 in the £2m scheme in a bid to generate an additional £8m for London's economy. According to the mayor, anticipated cuts in public

spending means the city is now more reliant on foreign investment and tourism, with a new 'Brand for London' to be unveiled in spring 2010.

Johnson said: "We are working on an iconic identity to tie together the diverse strands that make up the London brand. Hosting the London 2012 Games will bring endless opportunities."



Funding will help support people looking for a career in heritage

HLF unveils Skills for the Future

£5m programme to support traditional skills training

By **Pete Hayman**

A £5m grant scheme, designed to provide up to 1,000 paid training opportunities delivering traditional conservation skills to people across the UK, has been launched by the Heritage Lottery Fund (HLF).

Skills for the Future will support organisations offering vocational learning, as well as the use of new media and technology for people looking for a career in heritage.

Organisations can apply for grants between £100,000 and £1m to provide traineeships

over a five-year period. The closing date for applications is 19 March 2010, with awards being made in May 2010.

Dame Jenny Abramsky, HLF chair, said: "More than ever in these difficult times, HLF wants to focus on offering people skills that will give them a future career and meet the needs of the sector.

"This £5m commitment will ensure our heritage is protected for the future and represents a hugely exciting chance to attract people who might not usually consider a career in the heritage sector."

LA Fitness joins forces with IQL

An LA Fitness health club in Derby is to become an Institute of Qualified Lifeguards (IQL)-approved training centre.

The designation is part of a deal between LA Fitness and IQL, which will see IQL train more than 500 LA Fitness staff in the Emergency Response Qualification and a select number of staff in the NPLQ (National Pool Lifeguarding Qualification).

Tara Dillon, executive director of the IQL, said: "The training is especially great for us as it means more lifeguards can be qualified in the future as the demand for our qualifications continues to grow."

The IQL has also launched a training scheme, designed to qualify a team of trainer assessors in a bid to ensure the ongoing lifeguard programme is sustainable.

The year ends on a government skills pledge

New white paper puts skills at the heart of efforts to bring Britain out of recession

As the year draws to a close, the government – under Lord Mandelson's leadership – has published its new skills white paper, Skills for Growth.

The paper, which outlines plans to address skills issues as part of Britain's bid to grow out of the recession, has been produced in the context of the UK Commission for Employment and Skills' (UKCES) Ambition 2020 skills document. Around 90 per cent of the UKCES' recommendations can be found in the white paper, giving momentum to some of the proposals outlined.

One problem, however, is that this is an overarching strategy and, despite referencing Sector Skills Councils, doesn't reflect any sector-specific differences. The government recognises that 'it is as valuable for a young person to gain a good technical qualification through an apprenticeship as it is to go directly into university', and I agree. But if this approach is to have an impact, apprenticeship legislation needs to support the development of frameworks that work for our sector.

Equally, it is encouraging that the government 'set a bold new ambition for the higher education and skills systems – that three quarters of young people should participate in higher education or complete an Advanced Apprenticeship or equivalent technician level course by the age of 30'. It reaffirms the need to develop high level skills as we come out of a recession, but we would question the benefit in such a large number of individuals studying for degrees without courses appropriately preparing graduates as 'job-ready'. Our sector doesn't necessarily need a degree as an entry level requirement. It's the technical, job-ready skills that employers want.

Other challenges include the move toward a digital Britain and a low carbon economy as a means of taking us out of the recession. This in itself poses us a challenge. We must continue to demonstrate the vital role our sector plays in the economy, the physical activity agenda, and the health and well-being of the nation, and not get overlooked within this new approach.

The commitments outlined in the paper are a start, as long as the government continues to recognise that a sector approach to tackling skills challenges is the right one. One thing is sure; as we approach a general election, the white paper puts skills firmly at the centre of political debate. This recognises their importance to the future of the UK. 2010 promises to be an interesting year.



SkillsActive

STEPHEN STUDD is
chief executive of
SkillsActive

Looking for a New Challenge?

Discovery Learning is now offering the UK's First and Only Level 4 Obesity and Diabetes Management Certificate.

Our Level 4 Certificate is approved by SkillsActive and will qualify you for Level 4 status on REPs.

Call us today for more information.

0208 543 1017

Info@discovery.uk.com

www.discovery.uk.com



"because knowledge matters"



WRIGHT Foundation
GP EXERCISE REFERRAL QUALIFICATION
Courses every week throughout the UK

04 - 08 Jan Belfast, Northern Ireland
 11 - 15 Jan Runcorn, Cheshire
 18 - 22 Jan Stone, Staffordshire
 25 - 29 Jan Wantage, Oxfordshire
 01 - 05 Feb Shrewsbury, Shropshire
 15 - 19 Feb Paignton, Devon
 01 - 05 Mar Stevenage, Hertfordshire
 08 - 12 Mar Bury St Edmunds, Suffolk

THE FIRST AND STILL THE LEADING EXERCISE REFERRAL QUALIFICATION

WOULD YOU LIKE TO HOST A COURSE AT YOUR CENTRE?
 PLEASE CALL 0845 056 0260 (UK) FOR FURTHER INFORMATION

SPECIALIST COURSES!

Cardiac Rehabilitation 14 - 18 Dec Southampton, Hampshire 01 - 05 Feb Milton Keynes, Buckinghamshire 01 - 05 Mar Belfast, Northern Ireland 12 - 16 Apr Bury St Edmunds, Suffolk 19 - 23 Apr Stanley, Co Durham	Obesity & Diabetes 15 - 17 Feb Knaresborough, Nr Harrogate Mental Health 14 - 16 Apr West Bromwich, West Midlands Pulmonary Rehabilitation 10 - 12 May Stanley, Co Durham
--	---

THE NEW GOLD STANDARD CARDIAC REHAB QUALIFICATION

INFO: Tel: 0845 056 0260 (UK lo-call) Website: www.wrightfoundation.com

GO GREEN

www.leisureopportunities.co.uk/green



Did you know that you can now receive a **FREE subscription** to Leisure Opportunities in its new, greener, paper-free, digital format?

Change the way you read Leisure Opportunities magazine **SIGN UP ONLINE:**
 www.leisureopportunities.co.uk/green

We believe in quality training! So should you

With over **15 years** experience as a fitness training provider, we know a thing or 2 about what makes an elite fitness professional. Our mission is simple – to improve the standards of people working in the fitness industry – one that has been founded on a dedication to providing bespoke quality training packages. Whether you're a manager of a gym chain, an individual looking for advanced courses or you're just starting out in the fitness industry, we can help you or your staff with our range of outstanding courses. Just visit us online or give us a call to discuss your needs – and we'll do the rest.

0800 458 1388
 www.futurefit.co.uk



08007319781

www.focus-training.com

for all your training needs ...

... please see ad on page 24

Love Pilates?

Whatever your background you could turn your love for Pilates into a new and rewarding career

Non-qualified Pilates enthusiasts

- Train as a fully certified STOTT PILATES® matwork instructor
- Full support every step of the way

Qualified fitness & health professionals

- Train as a fully certified STOTT PILATES matwork or reformer instructor
- Qualification at Level 3 through CYQ (optional)
- Earn 16 REPs points per course

STOTT PILATES®
222 merithew corporation

0800 434 6110
www.activetraining.info

*Registered trademark of Merithew Corporation, used under license. STOTT PILATES® photography © Merithew Corporation.

Take control of your HSE First Aid needs

The Five-Day First Aid Instructor Course
Includes the PTLLS Level 3/4 Training Qualification

NEW! Two-Day Emergency First Aid At Work Instructor Course
Teach the new EFAW Course!

Nuco Training Ltd
08456 444 999
enquiries@nucotraining.com
www.nucotraining.com
www.nucoplus.com

City & Guilds Approved Centre
nuco training

"...I found the Instructor Course to be excellent and a credit to your company..."
Debbie Hull
(Bishops Cleeve)

FOR ALL YOUR FIRST AID NEEDS

Leisure Opportunities

training DIRECTORY

From just **£534** you can access over **23,000** motivated leisure professionals for 3 months (6 consecutive insertions). Committed to the leisure industry, they are potential students for your courses

TO ADVERTISE
+44 (0)1462 471747
leisureopps@leisuremedia.com

ENJOY HEALTHY LIVING
Taking steps towards a better life

Fitness Industry Training

Gym Instructor
Exercise to Music
Water-Based Exercise
Circuit Training
Nutrition
NVQs in Sport and Fitness
Courses throughout the UK

01423 560 383
enquiries@enjoyhealthyliving.co.uk
www.enjoyhealthyliving.co.uk

FIA
City & Guilds
Register of Exercise Professionals
REC

ATP Postural Correction Course

- Assists PT's in member interaction on the gym floor
- Use Postural Assessments to drive PT revenue
- Advanced personalised program design
- PT's can deliver truly personalised sessions
- Increase PT's professional profile within your club

2 Day Course - 16 REP's CPD Points
Prices from £238

Contact info@atp-uk.com for further details or visit our web site
www.atp-uk.com

16
Register of Exercise Professionals

STRIKING OUT FOR A BETTER LIFE

Step up your pace with a flexible distance learning course that will help you to further your career with professional qualifications from Level 2 to Level 4.

Choose from:

ISRM/Active IQ Fitness Management Certificate NEW!

- ISRM/City & Guilds Higher Professional Diploma
- ISRM Supervisory Management Certificate • Nutrition Awareness

NEC's range of courses mean you can enrol any time, study at your own pace, in your own time with the support of a specialist tutor
Quote Ref U002

WIDEN
CAREER
SKILLS

Widening opportunities through distance learning

Enrol now!
0800 389 2839
www.nec.ac.uk

CPD 20 REPs
ISRM
active IQ
nec
NATIONAL EXTENSION COLLEGE

leisureopportunities
news & jobs updated daily online

YOUR 1ST CHOICE FOR RECRUITMENT & TRAINING

NEXT ISSUE:
15 DECEMBER 2009
BOOK BY NOON ON THURSDAY 10 DEC

Christmas & New Year BONUS ISSUE

TO ADVERTISE, Contact the Leisure Opportunities team on
t: +44 (0)1462 431385
e: leisureopps@leisuremedia.com

EUROPEAN INSTITUTE OF FITNESS

LOVE your job

become a MASTER TRAINER

Residential Campus
Live, sleep and breathe PT in an inspiring atmosphere in Spain

Accredited Provider
Qualifications recognised throughout the UK and Europe

Fast Track Courses
Hundreds of successful graduates already working worldwide

NEW! UK INTENSIVE
The ultimate combined virtual classroom + residential practical, and in the UK!

0845 0944 007

BIFA

Are you
guilty?
of not
giving your staff
a voice



Let us help you!

Trained staff will transform your business professionally and financially.

Happy motivated staff are the key to selling and retaining more members and increasing secondary spend. Focus Training will assess your staff's needs, design then deliver bespoke training and development programmes allowing your staff to deliver exceptional financial results.

CALL US NOW FOR YOUR FREE STAFF ASSESSMENT

www.focus-training.com

call us on 0800 731 9781



Chronic Respiratory Disease Exercise Instructor Course

BLF bursaries are now available for the January 2010 intake of this innovative distance learning course.

Developed by Loughborough College, the University Hospitals of Leicester and the British Lung Foundation (BLF), with funding and input from Rotherham PCT, the course has been submitted for endorsement at level 4 on the Register of Exercise Professionals. It covers:

- Physiology and pathology of respiratory disease
- Management of chronic respiratory disease
- Responses to exercise and exercise prescription
- Managing breathlessness
- Referral pathways

The BLF bursary, funded by Air Products, is available to exercise professionals who meet the following entry requirements:

- Level 3 equivalent qualification as recognised by REP's
- A current valid first aid certificate
- Endorsement from a local pulmonary rehabilitation team
- 100 hours practical exercise instruction over the past year, with some experience of working with clients with COPD/respiratory disease
- Current CRB disclosure form

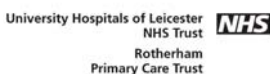
Instructors taking up a bursary will be expected to work with local Breathe Easy support groups to set up exercise classes within the community.

For more details or an application pack please log on to www.lunguk.org/supporting-you/blf_active/ or contact Danielle Smreczak using the details below

e: exercise@blf-uk.org

t: 020 7688 5618

w: www.lunguk.org





HEALTH ◦ VITALITY ◦ WELLBEING



Be a Part of Our Future

There has never been a more exciting time to join Fusion.

We are one of the fastest growing companies in the leisure industry, more than doubling in size over the last two years.

Fusion provides first choice leisure services in Southwark, Lambeth, Croydon, Tunbridge Wells, Milton Keynes, Watford, Hillingdon, Leatherhead (Mole Valley), Hounslow and Oxford. We also have partnerships with a range of other voluntary organisations and schools. We are seeking yet more positive & dynamic professionals to support our team's drive for continued delivery of excellent sport and leisure services in collaboration with our partners. In return, you will receive a generous benefits package and opportunities to further your career.

Divisional Sports and Community Development Manager
London and Oxford
Circa £24,000 - £28,000

Sports and Community Development Officer
West London Circa £20,000 - £25,000
Projects Officer
Southwark Circa £20,000 - £22,000

We are seeking a new team to support the growth of our Sports and Community Development programmes across our London and Oxford Leisure Centres. The successful candidates will need to have a passion for making a difference to the community, with the aim to promote and develop a wide range of sporting activities and to increase participation in sport and physical activity for all sectors of the community. If you have excellent communication, project management and analytical skills, combined with a background in sports development or with National Governing Bodies and/or a leisure related degree, then we would like to hear from you.

General Managers
London and South East
Circa £25,000 to £40,000 Ref: GM12/09

Are you capable of taking on a challenging role to inspire and motivate a team to deliver exceptional customer services? You will already be a General Manager or an Operations Manager in a large facility with a demonstrable record of success. Your strong interpersonal skills and approachability will be as important as your commercial awareness. Whilst driving your business forward, you will be meticulous in your standards, managing the needs of your customers, team and your client.

Operations Managers
London
Circa £19,000 to £23,000

You will be responsible for ensuring the smooth daily running of the centre. Management, training and motivation of staff, financial performance of all activities and assisting the General Manager in the development of the centre. You will be RLSS Pool Lifeguard Award qualified have experience of managing a team including training, development, appraisals and possess excellent oral, numerical, written skills.

Divisional Marketing Managers
London and South East
Circa £23,000 to £30,000 Ref: DMM12/09

This newly created role at Fusion requires excellent sales & marketing experience that can be applied in a relevant & targeted manner to help drive our genuinely local approach to business growth. By using classic marketing and media techniques, embracing CRM and bringing innovation to our communication there is the opportunity to create your own unique successes. Supported by central sales and marketing and your peers in other divisions, this role is a critical part of the Divisional Business Manager's team.

Divisional Maintenance Managers
London
Circa £30,000 to £35,000 Ref: DmaiM12/09

Due to the development of existing centres, we are looking for an experienced Divisional Maintenance Managers to oversee the planned preventative maintenance, capital investment and responsive maintenance at Fusion sites. You will be a motivated manager with good technical knowledge of M&E, H&S, Pool Plant and Building Fabric, who is able to set up and manage contractors as well as managing the local maintenance technicians. Experience within the leisure industry is desirable but essentially we require a manager who has an excellent grounding in hard FM plus an understanding of client and contractor management, energy management, and principles of managing refurbishment projects.

Divisional Business Managers
London and South East
Circa £40,000 to £45,000 Ref: DBM12/09

This may be your first step into multi-site management and you will already be managing a large wet and dry facility. Working closely with our clients, you will be accountable for the performance of the contract, delivering the business objectives and providing high quality local services with your team of general managers. You will have a track record of strong commercial performance and successful partnership working.

To apply for any of the above positions
please email your CV and covering letter to
careers@fusion-lifestyle.com quoting the relevant
reference number. **Closing date: 30th December 2009.**

UNIVERSITY OF WALES INSTITUTE, CARDIFF | ATHROFA PRIFYSGOL CYMRU, CAERDYDD

A position has become vacant at the Sports Facilities Department
within University Wales Institute, Cardiff (UWIC)

Duty Manager - Quality

Post No SP3366 Salary £27,183 - £27,999 (37 hours per week, 3 week rota pattern including working evenings and weekends)

Working as part of the Operational Team under the direction of the Operations Manager the successful post holder will be responsible for the day to day operations of the Sports Facilities delivering service to the sports curriculum within the School of Sport, Athletic Union, general community use, children's sports courses and also special events. In addition to the day to day management operations this position has specific key responsibilities (Marketing) in a quest to continually improve and maintain high standards and service delivery.

If you have the relevant management experience and qualifications, and are a highly motivated and enthusiastic person and believe you have the potential to take on the post with its current and future challenges, we would like to hear from you.

UWIC is one of the leading sports Universities in the UK with some of the finest sports facilities, including an excellent National Indoor Athletics Centre, Regional indoor/outdoor tennis complex, 25m swimming pool, sports halls, gymnasia and dance studios.

Closing date for applications is: Twelve Noon 22nd December 2009
Interviews scheduled for: 15th January 2010

For further information please visit: www.uwic.ac.uk/jobsatuwic or call Human Resources on 029 2041 7026



Cardiff's **metropolitan** university | prifysgol **metropolitan** Caerdydd



London's Leading College
City and Islington



CITY AND ISLINGTON
COLLEGE

An outstanding Ofsted inspection combined with the Beacon status awarded for excellence in learning and skills confirms our position as London's Leading College.

Lecturer in Sports Science

£20,919 to £37,475 ILW

Location: Centre for Applied Sciences, London EC1.

We require a Lecturer in Sports Science to teach on our outstanding BTEC Sports & Exercise Science and Personal Training & Fitness Consultancy Foundation Degree courses.

You will support our learners in all aspects of their learning as a tutor and will preferably be able to lead a course team.

Suitable candidates should be familiar with the quality assurance processes, so learner assessment meets Awarding Body standards. You should also possess a degree in a related subject and a teaching qualification or be willing to gain one. Fitness Instructor qualifications would also be advantageous.

Ref: 4621

Apply online at www.candi.ac.uk or please leave a message for an application pack on 020 7700 9240.

Closing date: 14 December 2009 (Midday).
Strictly no agencies

We celebrate diversity and welcome applications from everyone regardless of gender, ethnicity, sexual orientation, faith or disability.



leisure opportunities joblink

Book a joblink with us and we'll put your logo and company name on every page of the Leisure Opportunities website www.leisureopportunities.co.uk

This advert will have a hyperlink to your website, where you can list all the job vacancies in your company.



Go to www.leisureopportunities.co.uk

and click on the link to see the latest jobs from...



TO BOOK Call: +44 1462 471747
and start getting applications for your jobs IMMEDIATELY!

We have a vacancy for an enthusiastic, conscientious and motivated team member to join our prestigious Sports Centre. This swimming pool and fitness suite facility is set in the private grounds of St Mary's School in Calne which opens its doors to community members during peak times. Other facilities include a dance studio, therapy suite, outdoor tennis courts and astroturf pitches

ST MARY'S

SPORTS CENTRE
CALNE

Supervisor Wetside

£14,650 – £16,824 pa Full-time

You must have sound knowledge and experience in the day to day operations of a wetside and dryside leisure facility. Communication skills are also essential, as is the ability to respond to customers.

It is essential that you have a leisure related qualification or the relevant operational experience.

National Pool Lifeguard Trainer Assessor Qualification desirable.

Further details and an application form are available on request from the Sports Centre office on 01249 857335 or via e-mail to: chalk@stmaryscalne.org
Closing Date: Friday 18th December 2009

Inspiring success

Teesside
University

Student Services

Coach Development Manager

Salary up to £30,594

3 Year Fixed Term Contract

The Tees Valley Sport Partnership aims to increase participation in sport and physical activity, promoting its benefits across a wide range of sport, health and community development agendas. This is a new position to provide the knowledge and experience we need to deliver our expanding remit to support coaches at a community level.

Educated to degree level or equivalent, or with comparable experience, you will be skilled in developing mechanisms to support coaches and assist their deployment in a variety of settings including clubs, schools, local authorities and national programmes. You will have excellent communication and interpersonal skills and knowledge of current policies in coach education and development.

As part of a national network of similar officers you will work closely with sports coach UK, the national governing bodies of sport and local authority partners to ensure their coaching needs are met.

The position we are filling is exempt from the provisions of the Rehabilitation of Offenders Act and a satisfactory CRB disclosure from the Criminal Records Bureau is required as part of our clearance procedures.

This post is available on a full-time or job share basis. (If you wish to apply on a job share basis you must state this on your application).

Job Reference: 6316.

Application forms and further details are available online at www.tees.ac.uk or from the Human Resources Department, Teesside University, Middlesbrough, Tees Valley TS1 3BA.
E-mail: jobs@tees.ac.uk

Tel: 01642 342200 (24 hours).

For further details of this and other posts, please refer to our website at www.tees.ac.uk

Closing date: 15 December 2009, 12 noon.



leisure
health club
sport
spa
sales & marketing
hospitality
commercial leisure
tourism
museums & arts
attractions
suppliers

**jobs & news
updated daily
online**

www.leisureopportunities.co.uk

360,000 unique online users per month Over 63,000 weekly email subscribers

HELP US MAKE A DIFFERENCE?

COMMUNITY SERVICES

Contract Monitoring Officer

Part-time 18.5 hours per week
Band 5 £21,519 - £24,646

+ £798 Inner Fringe Allowance
(per annum pro rata)

Ref: LC 9429

An exciting opportunity exists for someone to oversee the Leisure Centre, Colosseum and other contracts ensuring high levels of customer care and compliance with contract conditions.

Significant investment of over £23 million pounds into these facilities has created superb quality facilities and high customer expectations.

Key skills and experience required are:

- A background in sport and leisure is desirable.
- Excellent communication skills.
- Excellent report writing skills.
- Attention to detail and excellent management of data information.

To apply, please visit www.watford.gov.uk/jobs
Alternatively, you can email recruitment@watford.gov.uk
or call our recruitment hotline on 01923 278307 (24 hours).

All candidates will need to complete a Watford Borough Council application form as it ensures that skills and experience are judged equally against our role specification.

Closing date: 24 December 2009.

Committed to quality, equality
and opportunity for all.

VISIT: WWW.WATFORD.GOV.UK/JOBS

We have a vacancy for an enthusiastic, conscientious and motivated team member to join our prestigious Sports Centre. This swimming pool and fitness suite facility is set in the private grounds of St Mary's School in Calne which opens its doors to community members during peak times. Other facilities include a dance studio, therapy suite, outdoor tennis courts and astroturf pitches.

ST MARY'S

SPORTS CENTRE
CALNE

Facility Officer Operations

£16,265 - £19,091 pa Full-time

You must have sound knowledge and experience in the day to day operations of a wetside and dryside leisure facility. Communication skills are also essential, as is the ability to respond to customers.

It is essential that you have a leisure related qualification or the relevant operational experience.

National Pool Lifeguard Trainer Assessor Qualification desirable.

Further details and an application form are available on request from the Sports Centre office on 01249 857335 or via e-mail to: chalk@stmaryscalne.org
Closing Date: Friday 18th December 2009

www.coventry.gov.uk



It's your City...

Individually we can achieve a great deal, together we can achieve so much more. Which is why we want our organisation to reflect the rich diversity of the population we serve. To be as diverse and amazing as our communities. To welcome people, of all ages and races and bring out the best in everyone who works as part of our team.

Get in touch and let's talk about how we can succeed together.

Community Services
Culture Leisure and Libraries

Sports Development Manager ★

£33,661 - £39,855 pa

Ref: MS/250/09

Do you have ambition, drive and creativity to shape Coventry sport?

We are appointing a Sports Development Manager to lead the development and implementation of strategies, delivery plans, projects and events. Working effectively with partners, you will drive and support initiatives aimed at increasing participation, promoting and improving sports provision.

Closing date: 18th December 2009.

Interview date: 8th January 2010.

Our preferred method of application is via our on-line facility

www.coventry.gov.uk

Alternatively you can request an application pack by email: jobs@coventry.gov.uk or you can

Call our jobs line: 024 7683 3030

minicom: 024 7683 3487

(for hearing impaired callers).

We no longer accept emailed application forms.

★ This post is exempt under the Rehabilitation of Offenders Act 1974 and as such an appointment to this post will be conditional upon thereceipt of a satisfactory response to a check of police records via the Criminal Records Bureau.

This authority is committed to safeguarding and promoting the welfare of children and young people/vulnerable adults and expect all staff and volunteers to share this commitment.



Coventry City Council ...You make the difference

team BEDS&LUTON
activity for life...

act5ive
LUTON

Sports Development Manager – National Governing Bodies

Location: team BEDS&LUTON (the County Sports Partnership for Bedfordshire and Luton), Wigmore Hall, Eaton Green Road, Luton, LU2 9JB
Salary: £35,430 - £38,042 per annum

A tremendous opportunity is available for a skilled and talented Sports Development professional to lead on team BEDS&LUTON's work with National Governing Bodies. An excellent relationship with NGBs already exists, we are looking for someone to drive this forward and make it outstanding.

You will understand the core role of County Sports Partnerships and their role in underpinning the work of NGBs, have a terrific sports development track record and have a desire to add value to a successful team.

You will lead and manage all aspects of NGB Partnerships - including the line management of staff, provision of services through procurement, development of delivery programmes and performance management. You will ensure systems for reviewing, monitoring and evaluating the work of the NGB partnerships are in place.

You will be up to date with all relevant legislation, professional developments, emerging best practice and funding initiatives. You will play a vital role in contributing to the development of policies, strategies and initiatives in the County Sports Partnership.

team BEDS&LUTON has developed a strong reputation locally, regionally and nationally and is always looking to improve and grasp opportunities – can you make the team better? For an informal discussion contact Lloyd Conaway, on 01582 813768.

You can obtain an application form and job description by either calling us on 01582 400272 or send a request via email to info@activeluton.co.uk. Alternatively these can be downloaded from www.activeluton.co.uk. Please note CV's will not be accepted in isolation, an application form must accompany them.

Closing date for applications is Friday 8th January 2010

Interviews are scheduled for Friday 22nd January 2010 and only successful applicants will be contacted.

All appointments will be subject to a Criminal Records Bureau Check.

TEDUK

TED Leisure, One of the most innovative companies in the leisure industry are looking to recruit team members, for our Blue Chip Clients which include: UK Holiday Parks, Activity Centres, Leisure Centres & Worldwide hotels.

Current positions available are

- Swimming Pool Managers
- Lifeguards
- Sports Instructors
- Well Being professionals.

For further information please submit a covering letter and CV to kristian.johnson@teduk.com

TEDUK 23 - 24 Titan Court, Laporte Way, Luton, Beds, LU4 8EF



ACTIVITY FOR LIFE

The Activity for LIFE exercise referral scheme is having a positive impact on people's lives. It is jointly funded by Knowsley Metropolitan Borough Council and NHS Knowsley. The scheme provides opportunities for people to become more active and change their lifestyles. External research has shown that:

- 84% of clients show a significant improvement in health measures in 12 weeks
- 81% show a significant improvement in their activity levels
- 72% clients demonstrate an improvement in mental health and wellbeing at 52 weeks

Senior Activity for LIFE Advisor - 3 Posts

Ref: REC 01640

£22,221 - £23,708 • Fixed term contract until 31st March 2012

You will line manage the Activity for Life Advisors, ensuring the delivery of outcomes and targets are achieved. You will be working with the Primary Care Health practitioners dealing with referred clients. You will also be conducting client consultations including physiological and lifestyle measurements, choosing appropriate 'client focused' activity/lifestyle interventions, delivering gym, aerobic, circuit training or related activity sessions and co-ordinating the Activity for Life programmes within the locality on a daily basis.

You will have the following:

- Experience of supervising/mentoring staff and have excellent organisational skills.
- Experience of developing action plans, monitoring and evaluating projects.
- Level 3 Advanced Instructor.
- Preferably hold an Exercise to Music qualification or similar.
- Extensive experience of teaching health and fitness or related sessions/classes.
- Experience of working with clients with special medical needs.
- Knowledge of the effect of exercise on people with health related problems.

Activity for LIFE Advisor x 1.5 posts

Ref: REC 01638

£17,161 - £21,519 pro rota • Fixed term contract until 31st March 2012

You will be working with the Primary Care Health practitioners dealing with referred clients. You will be required to arrange client consultations including physiological and lifestyle measurements, choosing appropriate 'client focused' activity/lifestyle interventions, delivering gym, aerobic, circuit training or related activity sessions and co-ordinating the Activity for Life programmes within the locality on a daily basis.

You will have the following:

- Level 3 Advanced Instructor.
- Preferably hold an Exercise to Music qualification or similar.
- Extensive experience, teaching health and fitness or related sessions/classes.
- Experience of working with clients with special medical needs.
- Knowledge of the effect of exercise on people with health related problems.

For each post, you will need a high standard of verbal communication, the ability to motivate others, self-motivation, be flexible and committed to attaining the highest standard of customer care.

You will also be required to work in different locations across the Borough. Please indicate whether you would like to be considered for both posts.

For an informal discussion, please call Jenny Flynn on 0151 443 3095. Closing date for both posts: 15th December 2009.

Interviews: Senior Advisor: 6th and 7th January 2010.

Advisor: 8th and 11th January 2010.

Applications from all sections of the community are positively encouraged to ensure that our workforce reflects the communities in which we work.

Knowsley MBC is a smoke free working environment.

For an application form download it from our website at www.knowsley.gov.uk or for a hard copy please ring 0151 443 5000 or e-mail: recruitment@knowsley.gov.uk



JUNIOR ACTIVITY CO-ORDINATOR



An ambitious Junior Activities Coordinator is required for Colet's market-leading junior provision. You'll be responsible for delivering a wide range of sports and play activities for our 1500+ young members aged 4-17. Qualifications are required to Sports Science graduate/NNB/NVQ 3.

We are looking for a confident candidate who shares our belief in the importance of sport and play towards the healthy development of young people. You will have the ability to enthuse, encourage and develop the skills and confidence of our juniors, so good communication skills are essential. Strong administration and organisational skills plus a keen attention to detail are further attributes we are looking for. OFSTED regulatory knowledge is desirable. The chosen candidate will be encouraged to participate in the Duty Manager rota for overall general club management development.

Please phone 020 8398 7108 for more information or send your CV to the HR Manager, Colets Health & Fitness, St Nicholas Road, Thames Ditton, Surrey, KT7 0PW. Visit our website: www.coletshhealthclub.co.uk



Fitness Instructors

Following a £7million investment we are now recruiting fitness instructors to join our team at the Cranleigh (nr Guildford) Golf & Country Club.

Applicants must hold a level 2 instructor's qualification and have a natural ability to inspire and motivate. Excellent communication skills and a passion for Health & Fitness are a must.

You will be responsible for daily gym operation, new member inductions and programming, program reviews, general maintenance and driving new initiatives and gym challenges.

You must be prepared to work mornings, evenings and weekends on a set rota. Salary £15k following a successful performance review.

To apply send your CV to david.salmon@ccgclubs.com no later than 12th December 2009.



COUNTRY CLUB GROUP

Community & Economic Promotion

PHYSICAL ACTIVITY OFFICER

£24,646 - £26,276 p.a. plus Essential User Car Allowance

Ref: ADC521

Subject to Job Evaluation

Ashfield District Council, in partnership with a number of health services providers, operates a number of schemes providing a variety of Community Healthy Living Services. As co-ordinator, you will ensure the effective delivery of the Community Healthy Living Schemes and will administer and manage the discrete elements of the initiatives.

You will have good communication and organisational skills as well as being I.C.T. literate and must be experienced in managing budgets. Understanding the work of public services is essential as is knowledge of community health programmes. Previous experience of working with a variety of partners is required (some of which must be within the delivery of physical activity programmes).

A full clean driving licence is required as is the ability to work outside normal office hours if required.

For an informal discussion relating to the post, please contact Theresa Hodgkinson on (01623) 457588.

Canvassing of Members of the Council (directly or indirectly) for any appointment shall disqualify the candidate for that appointment.

Applicants should disclose if they are related to a Member or Officer of the Authority.

You can obtain an application form and job description by visiting our website at www.ashfield-dc.gov.uk/jobs or by writing to Human Resources, Ashfield District Council, Council Offices, Urban Road, Kirkby-in-Ashfield, Nottingham NG17 8DA or by telephoning (01623) 457583 or by calling in at our Information Offices at Hucknall, Kirkby-in-Ashfield or Sutton-in-Ashfield.

Closing date for applications: 30th December 2009.

Interviews will be held on: 14th January 2010.

Ashfield District Council is working towards Equal Opportunities and welcomes applications from all sections of the Community.



Ashfield



Launch your New Year 2010 recruitment campaign with an advertisement in the

leisureopportunities

special Christmas double issue!

The 15 December edition of Leisure Opportunities will be working hard for you right through to the New Year.

Book your recruitment advertisement in the Christmas double issue and you'll get:

1

Magazine advertising

AN ADVERT IN LEISURE OPPORTUNITIES MAGAZINE

With an ABC audited circulation of **23,035**, Leisure Opportunities is the proven industry market leader for recruitment, meaning your job will be seen by more of the right candidates than in any other publication.

2

Web advertising job board

A full listing on the Leisure Opportunities job board - www.leisureopportunities.co.uk along with an email link to deliver cvs direct to your mailbox.

With more than **360,000** unique users each month, the job board is the leisure job seekers' favourite place to search for vacancies.

3

Ezine advertising

Your jobs are listed on the Leisure Opportunities ezine, which is sent out to more than **65,000** subscribers who are actively seeking employment.

4

Bonus web and ezine

Leisure Opportunities works across 27 different leisure markets and is linked to more than 20 leading industry associations and organisations.

As part of these tie-ups, we have launched a wide range of job and news ezines and we offer all Leisure Opportunities customers the chance to select an additional listing for each vacancy from our extensive range of market-specific ezines.

5

Instant jobs email

Leisure Opportunities' instant jobs service sends details of your vacancy straight to the mailbox of job seekers across the leisure industry.

6

Digital magazine

Leisure Opportunities is now available in digital format. Visit www.leisureopportunities.co.uk/digital to view the latest issue.



Six weeks internet listing

Bonus time on the Leisure Opportunities website, with a **special six week listing, instead of the usual four weeks.**



Christmas & New Year bonus ezines

A listing on the Leisure Opportunities' Christmas and New Year bonus jobs ezines which will go out to job seekers over the Christmas holiday period. These ezines have been specially designed to focus on job vacancies available going into the New Year and is in addition to the standard Leisure Opportunities news and jobs ezines.

To take advantage of this special seasonal offer, book before noon on Thursday 10 December. CONTACT US now on

Tel: **+44 (0)1462 471747** Fax: **+44 (0)1462 433909** Email: leisureopps@leisuremedia.com

www.leisureopportunities.co.uk

SOFITEL
LUXURY HOTELS
LONDON ST JAMES

SPA RECEPTIONIST/THERAPIST

The award-winning So Spa at Sofitel London St James is here to offer a sanctuary of relaxation that compliments Sofitel London St James' deluxe ambience.

We are currently recruiting a Spa Receptionist/Therapist. This is a unique opportunity as this role is split between the two most important Spa areas: reception and treatment. The successful candidate will ideally be trained to NVQ level 3 in Massage Therapy or equivalent. The ability to perform deep tissue massage as well as experience with Cinq Mondes and Caritas products/treatment are an advantage. You will also be required to be well organised, ideally able to communicate in a second language (French language being an asset but not a requirement) with a minimum 2 years experience in a similar position and/or environment.

Key responsibilities:

- To provide exceptional guest service
- To meet and greet all spa guests
- To assist in the retail/tea area
- To make appointments and process payments
- To perform all or a significant number of services/treatments on the spa menu
- To advise guest on bespoke spa services
- To maintain retail sales targets/build returning businesses
- Must be knowledgeable on all spa services/retail items
- Must have excellent communication skills
- Flexibility to work shifts when/as required

*Applications to: **H3144-hr3@sofitel.com**, or visit **www.accorjobs.com** OR **www.sofitel.com** for applications.

Closing date: January 2010

Sofitel London St James offers an excellent salary package to be discussed on application, coupled with great career development prospects.

*Please note that due to the high number of applications received we are ONLY able to contact candidates who will take part in the next stage of our recruitment process.

*You must have the experience mentioned above or similar and legibility to work full time in the UK to be considered for this position.

TOTAL FITNESS

Leisure Clubs



Are you looking for a TOTAL change?

TOTAL FITNESS one of the North's leading Health & Fitness operators is looking to recruit the following positions nationwide:

CLUB MANAGER

Ideally you must be a flexible, ambitious professional who is committed to providing a consistently high level of customer service with a positive attitude towards both the sales and the general operations of their club. Being capable of motivating staff to create a friendly atmosphere within the club and which, by its very nature, promotes retention. The ideal candidate would have two years management experience of working in a Health & Fitness club.

ASSISTANT MANAGER

You will support and assist the Club Manager and be involved in the smooth and efficient running of the Club. You will have the responsibility of being at the sharp end of the business, dealing with members and staff on a daily basis. You must be a team player with excellent interpersonal skills and have a high level of enthusiasm and commitment. You should be dynamic, adaptable, able to communicate effectively at all levels and endeavor to lead by example in terms of job performance and overall conduct. A relevant sport / exercise / management related qualification is desirable.

DUTY MANAGER

The Duty Manager will be at the sharp end of the business, being responsible for the smooth and efficient running of the centre, dealing with customers on a daily basis whilst also having daily contact with senior management. Ideally you must be able to communicate effectively at all levels and endeavour to lead by example in terms of job performance and overall conduct.

WE offer competitive rates of pay and excellent benefits.

Please apply using our online application form which can be found on **www.totalfitness.co.uk** or call **0161 440 2637** to request an application pack.

CORINTHIA
HOTEL
LONDON

ESPA

SET IN THE HEART OF LONDON NEAR TRAFALGAR SQUARE, CORINTHIA LONDON WILL BECOME ONE OF THE MOST HIGH PROFILE AND PRESTIGIOUS HOTELS IN THE CAPITAL, OPENING ITS DOORS IN AUTUMN 2010.

The exciting partnership with ESPA International begins with the launch of The Corinthia Spa by ESPA, the eagerly anticipated flagship spa of these two prestigious brands. Set over four floors, this impressive spa will take innovative design to a new level, offering an outstanding array of spa and wellness facilities combined with an exceptional experience synonymous with the ESPA philosophy.

SPA DIRECTOR

A unique opportunity has arisen for an experienced and passionate Spa Director who will need to demonstrate a strong professional record in the following areas:

- Senior management experience in a 5 star spa, hotel or wellness environment.
- Ability to drive and lead all operational aspects of the Spa including fitness and membership.
- Sound understanding of the financial indicators required for strong business performance.
- Proven experience in delivering successful marketing and PR initiatives.
- Strong leadership skills and the ability to motivate a large team of spa professionals.
- Excellent communication skills at both departmental and executive level.
- Impeccable personal presentation.

To support the Spa Director we are also looking for the following talented and ambitious managers: • **MARKETING & MEMBERSHIP MANAGER** • **TREATMENT MANAGER** • **RECEPTION MANAGER** • **WELLNESS & FITNESS MANAGER**

To apply please send your CV to: **espa.people@espainternational.co.uk** quoting **ESPA CO.** ESPA International (UK) Ltd, Farnham, Surrey, GU9 7XX **www.espaonline.com/spa-jobs** Tel: +44 (0) 1252 742800



Health, Leisure & Fitness Recruitment

Specialists in Permanent and Temporary Recruitment for the leisure industry

- ① **Membership Sales Consultants**
Nationwide – up to £16k + bonus
- ① **Leisure Centre Managers**
London - £30-40k
- ① **Senior Health Club General Managers**
Nationwide - £45-65k + bonus
- ① **Leisure Club Managers**
Oxford, Southampton, Bedford - £25-35k + bonus
- ① **Health Trainer Service Manager**
Cambridge - £30-£33.5k
- ① **Community Development Workers**
Cambridge £20.7 – £26.8k
- ① **Sales & Events Managers**
Coventry, Luton, Plymouth - £22-24k + bonus
- ① **Temporary Lifeguards & Swimming Instructors**
London & Home Counties
- ① **Temporary Beauty Therapists**
London & Home Counties

To apply for any of the roles above

send your CV to: **info@4leisurerecruitment.co.uk**
or contact us on: **0870 2423339**

For more roles, visit the new website today
www.4leisurerecruitment.co.uk

news & jobs at www.leisureopportunities.co.uk

National Football museum set for Manchester move

Museum trustees agree a deal with Manchester City Council to relocate to the Urbis centre by end of 2011

By **Pete Hayman**

The National Football Museum has announced plans to relocate to Manchester's Urbis centre in 2011 after trustees of the attraction resolved to enter into a deal with Manchester City Council.

It is hoped the new partnership will secure the long-term future of the museum, which no longer has sufficient funds to remain at its current location in Preston, Lancashire, despite attracting more than 100,000 visitors a year.

Under the plans, the National Football Museum will remain open to the public in Preston to allow for the creation of the new attraction in Manchester, while it is hoped to retain current exhibitions in Preston beyond 2012 if funding can be secured.

The museum also plans to continue its research partnership with the University of Central Lancashire, which had teamed up with Lancashire County Council and Preston City Council to keep the attraction in the city.



The museum is set to move to Manchester's Urbis centre by 2011

Contractor appointed for New Brighton scheme

By **Tom Walker**

Neptune Developments has named developer Bowmer & Kirkland as its preferred contractor for the second phase of the New Brighton project in Wallasey, Merseyside.

Work is set to start on the scheme by the end of the year with civil engineering works, including draining the Marine Lake prior to refurbishment and works to the Promenade.



Phase two includes restaurants

The first phase of the £60m scheme was completed late last year with the 800-seat Floral Pavilion and Conference Centre.

The £35m second phase will include a 66-room Travelodge, a six-screen, 1,000-seat digital cinema, a watersports training centre and a public lido.

The Marine Lake and a new Promenade and Model Boating Lake are due to be completed by summer 2010. The Travelodge, Light Cinema and some leisure venues are set to open by spring 2011. The remaining facilities and the Lido will be completed by summer 2011.

Local grants for coastal change

The government has awarded grants worth £11m to fifteen local authorities who have come up with the best and most innovative ideas for dealing with and adapting to coastal change. A total of 20 bids for funding were received and the programme will run from November 2009 until Spring 2011.

CONTACTS BOOK

Arts & Business +44 (0)20 7378 8143
www.aandb.org.uk

ALVA +44 (0)20 7222 1728
www.alva.org.uk

Arts Council +44 (0)20 7333 0100
www.artscouncil.org.uk

ASVA +44 (0)1786 475152
www.asva.co.uk

BALPPA +44 (0)20 7403 4455
www.balppa.org

BHA +44 (0)845 880 7744
www.bha-online.org.uk

BICM +44 (0)845 217 1811
www.bicm.co.uk

BiSL +44 (0)20 8780 2377
www.bisl.org

CCPR +44 (0)20 7976 3900
www.ccpr.org.uk

CMAE +44 (0)1334 460 850
www.cmaeurope.org

Countryside Agency +44 (0)1242 521381
www.countryside.gov.uk

CPRE +44 (0)20 7981 2800
www.cpre.org.uk

English Heritage +44 (0)870 333 1181
www.english-heritage.org.uk

FSPA +44 (0)20 7259 414999
www.sportsandplay.com

FIA +44 (0)20 7420 8560
www.fia.org.uk

HHA +44 (0)20 7259 5688
www.hha.org.uk

IAAPA +1 703 836 4800
www.iaapa.org

IEAP +44 (0)1403 265 988
www.ieap.co.uk

Institute of Hospitality
+44 (0)20 8661 4900
www.instituteofhospitality.org.uk

ISPAL +44 (0)845 603 8734
www.ispal.org.uk

LPF +44 (0)1462 471932
www.leisureprop.com

LMCA +44 (0)1278 436910
www.lmca.info

MLA +44 (0)20 7273 1444
www.mla.gov.uk

NPFA +44 (0)20 7833 5360
www.playing-fields.com

People 1st +44 (0)870 060 2550
www.people1st.co.uk

REPs +44 (0)20 8686 6464
www.exerciseregister.org

SAPCA +44 (0)24 7641 6316
www.sapca.org.uk

Sports Aid +44 (0)20 7273 1975
www.sportsaid.org.uk

Sport England +44 (0)8458 508 508
www.sportengland.org

Springboard +44 (0)20 7497 8654
www.springboarduk.org.uk

SkillsActive +44 (0)20 7632 2000
www.skillsactive.com

Tourism Management Institute
+44 (0)1926 641506
www.tmi.org.uk

Tourism Society +44 (0)20 8661 4636
www.tourismsociety.org

VisitBritain +44 (0)20 8563 3000
www.visitbritain.com

World Leisure +1 250 497 6578
www.worldleisure.org