

Nickelodeon-branded attraction for Pleasure Beach

By **Martin Nash**

Children's entertainment brand Nickelodeon and the Pleasure Beach amusement park in Blackpool have agreed to develop the UK's first Nickelodeon-branded attraction.

Nickelodeon's shows and characters will feature in more than 14 attractions covering an area of 6 acres (2.4 hectares) at Pleasure Beach, with construction of Nickelodeon Land scheduled to begin in the autumn. A grand opening is planned for the spring of 2011.

Gerald Raines, senior director at Nickelodeon Theme Parks and Attractions said: "This is an ideal location for Nickelodeon



The Nickelodeon characters include a number of household names

and a great opportunity to expand our global presence."

Amanda Thompson, managing director of Pleasure Beach, Blackpool said: "Nickelodeon Land will combine Pleasure

Beach's reputation for amazing rides and attractions with Nickelodeon's favorite fun characters to produce a wonderful attraction, which will wow visitors to the park."

Under the terms of the agreement, Nickelodeon will bring its characters, interactive shows, and 'green slime' to Pleasure Beach, along with new rides, games and food outlets themed with Nickelodeon characters including *SpongeBob SquarePants*, *Dora the Explorer*, *Fairly Odd Parents* and *Avatar: The Last Airbender*.

The attraction will join Nickelodeon Universe in Minneapolis' Mall of America; Nick Central at Dreamworld Australia; and Nickland at Movie Park Germany, together with Nickelodeon attractions at the Universal Studios theme parks in Orlando, Florida and Hollywood, California.

Work completed on Kentish Town Sports Centre

Historic leisure centre reopens to the public following £25m renovation scheme

By **Tom Walker**

The Kentish Town Sports Centre in London has reopened to the public, following a comprehensive £25m revamp of the Grade II-listed Victorian building.

Facilities at the new centre include three swimming pools, a 90-station health and fitness club equipped by Technogym, a Kinesis area, a Power Plate zone, a group exercise studio and a Wii Fit interactive zone.

Work also included the refurbishment of the facility's historical features – such as the



The original features of the centre have been retained

main Willes pool facade – and the creation of a new café.

The project was undertaken by a team including Roberts

Limbrick Architects; consultants Davis Langdon; property experts Cyril Sweett; Max Fordham Consulting Engineers; Alan Baxter and Associates; and Wates Construction.

The building has achieved a Very Good BREEAM (environmental building assessment) rating and has been designed to be more eco-friendly and cheaper to run by using an existing bore-hole to supply water to the pools.

The centre will be operated by Greenwich Leisure on behalf of London Borough of Camden.

Parents scared of outside play

An ICM survey commissioned by Play England for Playday 2010 – the annual celebration of children's right to play – says that 47 per cent of adults think it is unsafe for children to play outside.

According to a spokesperson for Playday 1010, the research "demonstrates the need for communities to create better places for children to grow up and to improve opportunities for children to play outside."

CONTACTS

THE LEISURE MEDIA COMPANY

Portmill House, Portmill Lane,
Hitchin, Herts SG5 1DJ, UK

Tel: +44 (0)1462 431385

Fax: +44 (0)1462 433909

e-mail: please use contacts'

fullname@leisuremedia.com

Subscriptions

Julie Albone 01462 471915

subs@leisuremedia.com

Editor

Liz Terry 01462 431385

Managing Editor

Tom Walker 01462 471934

Journalists

Pete Hayman 01462 471938

Martin Nash 01462 471933

Sarah Todd 01462 471927

Designer

Ed Gallagher 01905 20198

Internet

Dean Fox 01462 471900

Tim Nash 01462 471917

Sales Team Manager

Annie Lovell 01462 471901

Account Managers

Recruitment, training, tenders

Paul Thorman 01462 471904

Simon Hinksman 01462 471905

Emma Matthews 01462 471907

Property desk

Simon Hinksman 01462 471905

Spa Opportunities

Emma Matthews 01462 471907

Financial Controller

Sue Davis 01395 519398

Financial Administrator

Denise Gildea 01462 471930

Circulation Manager

Michael Emmerson 01462 471932

To subscribe to Leisure Opportunities, log on to www.leisuremedia.com email: subs@leisuremedia.com tel +44 (0)1462 471913 fax +44 (0)1462 433909. Annual subscription rates are UK £31, Europe £41, Rest of world £62, students UK £16. Leisure Opportunities is published fortnightly by The Leisure Media Company Limited, Portmill House, Portmill Lane, Hitchin, Herts SG5 1DJ, UK and is distributed in the USA by SPP, 75 Aberdeen Road, Emigsville, PA 17318-0437. Periodicals postage paid at Manchester, PA POSTMASTER Send US address changes to Leisure Opportunities, c/o PO Box 437, Emigsville, PA 17318-0437. The views expressed in print are those of the author and do not necessarily represent those of the publisher The Leisure Media Company Limited. All rights reserved. No part of this publication may be reproduced, stored in a retrieval system or transmitted in any form or by means, electronic, mechanical, photocopying, recorded or otherwise without the prior permission of the copyright holder. Printed by Warners Midland plc. ©The Leisure Media Company Limited 2010 ISSN 0952/8210

May to target 'failed' drinking culture

Home Office plans overhaul of Licensing Act to combat on alcohol-related issues

By **Pete Hayman**

Home secretary Theresa May has announced new plans to overhaul licensing legislation that could see local authorities handed increased powers in a bid to help crack down on alcohol-related disorder.

A number of measures will be put to consultation as part of a bid to reform the Licensing Act, including the introduction of a fee for late-night licences and a ban on the sale of below-cost alcohol.

Other proposals include a limit on the number of Temporary Event Notices that can be applied for in a year and ensuring police and health concerns are considered when assessing license applications.

May said: "The benefits promised by the 24 hour



May: Efforts to introduce a 'café culture' of drinking have failed

drinking 'café culture' have failed to materialise and in its place we have seen an increase in the number of alcohol related incidents and drink-fuelled crime and disorder.

"We know that the majority of pubs and bars are well run business but the government believes that the system needs

to be rebalanced in favour of the local communities they serve with tougher action taken to crack down on the premises which cause problems."

The consultation is due to run for six weeks, with the Home Office revealing that nearly one million of all violent crimes last year were alcohol-related.

Leisure schemes affected by NWDA funding cut

By **Pete Hayman**

A number of leisure schemes across North West England have been dealt a blow after the government reduced the regional development agency's budget by £52m.

The Northwest Regional Development Agency (NWDA) confirmed that all un-committed projects will not receive funding in the current financial year, while there will be no new commitments during 2011-12.

Plans for the creation of a new National Football Museum at the Urbis Centre in Manchester; the Roman Maryport project in Cumbria; and Talbot Gateway in Blackpool are among the schemes that will not receive NWDA support.

Liverpool's Everyman and Playhouse theatres; the Sands



Blackpool's Talbot Gateway is to lose out on NWDA funding

Centre in Carlisle; and the Sportscity major destination site in Manchester will also miss out on support ahead of the agency's dissolution in 2012.

NWDA chief executive Steven Broomhead said: "We have made a start by cutting non-contracted projects and reducing our own administra-

tion budget but we now need to re-examine all existing projects and programmes to identify where further savings can be made.

"We will use all available flexibility to try to meet these challenging reductions but the reality is that this is a substantial reduction to our in-year budget and there is bound to be an economic impact."

The £220m Talbot Gateway scheme will no longer receive a £23m contribution from NWDA; a decision that Helen France – Blackpool Council's executive director for places – said did not reflect the development's viability.

France said: "We are looking at alternative methods of supporting the scheme and will be looking to bid to the new £1bn Regional Growth Fund."

Robertson calls for 'bureaucracy bonfire'

CCPR-led review to examine how to free sports clubs of legislation and regulations

By **Pete Hayman**

A "bonfire of costly bureaucracy", which aims to remove barriers that prevent people participating in sport, has been announced by sports minister Hugh Robertson.

The Central Council of Physical Recreation (CCPR) has been asked to conduct a review of the regulations and legislation affecting sports clubs, which is due to be completed by the end of the year.

Among the issues to be explored as part of the review is whether the new vetting and barring system will discourage more volunteers from helping with youth team sport.

The review will look into the current system that requires teachers to have a second Criminal Records Bureau check



The sports minister is looking to remove barriers to participation

if they want to work with young people outside school.

Robertson said: "Against the challenging economic backdrop, I want to start a bonfire of costly bureaucracy in sport. We need to remove as many barriers as possible that stop people getting involved."

CCPR chief executive Tim Lamb added: "There's an urgent need to lift the burden of bureaucracy from clubs and volunteers. Red tape is preventing people from getting the opportunities they want in sport and taking up too much valuable volunteer time."

Darwin site misses out on world heritage list

By **Martin Nash**

UNESCO (the United Nations Educational, Scientific and Cultural Organisation) has added 21 new sites to its World Heritage List, comprising 15 cultural, five natural and one mixed properties. Four sites have also been added to its list of sites in danger.

Among the cultural sites named are the Australian convict sites, 11 in total and mainly around Sydney and in Tasmania, plus Norfolk Island and Fremantle; Jantar Mantar in Delhi, India – architectural



The bid for Down House will be reviewed and re-submitted

astronomy instruments dating from 1724; the 11th century Imperial Citadel of Thang Long Hanoi in Vietnam; the Tabriz Historical Bazaar Complex in

Iran; the Bikini Atoll nuclear test site in the Marshall Islands; and the 17th century canal ring area in Amsterdam, Holland.

The UK's nomination for Down House – the workplace and home in Bromley, south London, of Charles Darwin – to join the list of world heritage sites has been deferred.

The World Heritage Committee said that although the bid was very strong in recognising scientific achievement, further analysis and study was needed. It has now been referred back to the UK authorities for these issues to be addressed.

IN THIS ISSUE

04 HEALTH & FITNESS

- ▶ Virgin Active to be sold?
- ▶ Nottingham plans approved

06 SPORT

- ▶ Council in Sobell U-turn
- ▶ Tigers eye new stadium

08 ATTRACTIONS

- ▶ Merlin's Blackpool vision
- ▶ Bristol attraction planned

09 HOSPITALITY

- ▶ 'Stable recovery' for sector
- ▶ New owner for London hotel

10 ARTS & CULTURE

- ▶ Green light for Tate Britain
- ▶ Plinth shortlist revealed

11 TOURISM

- ▶ UK sports tourism 'prosper's'
- ▶ £16.5m for Welsh schemes

12 PROPERTY

- ▶ New vision for West End
- ▶ Boost for Swansea 'village'

13 PROPERTY/TENDERS

14 TRAINING

- ▶ Running School expands
- ▶ Spa courses launched

16 TRAINING DIRECTORY

19 JOBS

THE LEISURE MEDIA COMPANY PUBLISHES



IN BRIEF

Work to resume on Oswestry leisure centre

► Work is to resume at the £7.5m Oswald Park Active Lifestyle Centre in Oswestry, Shropshire, after a new contractor was appointed to deliver the scheme. Northern Ireland-based Graham Construction was awarded the contract after the Shrewsbury-based Frank Galliers – which started work on the project in March 2009 – left the project due to financial difficulties in January. The new complex will boast a 25m swimming pool, a training pool and a fitness suite

Wiltshire to invest £117m on facilities

► A number of local authority-run leisure centres in Wiltshire are to be handed over to the public, but £117m will be spent on upgrading existing facilities or building replacement centres. Wiltshire Council confirmed that Corsham, Downton, Pewsbury, Tisbury, Westbury and Wootton Bassett leisure centres would be transferred, as well as Westbury and Bradford-on-Avon swimming pools. The decision was taken after the council said it would need to spend £93m to maintain the existing 23 facilities in the next 15 years, and in the present financial climate was deemed not to be "affordable or sustainable".

Fusion Lifestyle to run Enfield facilities

► Four facilities in Enfield, London, are to receive nearly £9m worth of improvements over the next three years after Fusion Lifestyle was appointed to run council-owned sites. A total of seven sites will be run on behalf of Enfield Council, with Albany, Southbury, Southgate and Edmonton leisure centres to be revamped. The operator will also run Arnos Pool, Aspire Sports and Fitness Centre and Bramley Bowls Centre as part of the deal.

Branson set to sell off Virgin Active?

Health club operator "in talks" with a number of potential bidders for the business

By **Tom Walker**

A number of private equity groups are considering making a bid for health and fitness operator Virgin Active.

Blackstone and CVC Capital Partners, both of which already have investments in the leisure sector, are among companies looking to take over "a considerable size" of the business.

Part of Sir Richard Branson's Virgin Group, Virgin Active currently operates 72 health clubs in the UK and also has operations in the Mediterranean and South Africa.

It is understood that Branson would retain a share in Virgin Active as part of any takeover deal.

Two private equity companies – Permira and Bridgepoint Capital – already hold stakes in the chain after being part of a deal to sell the



Virgin Active currently operates more than 70 clubs across the UK

Holmes Place chain to Virgin in September 2006.

Virgin Active is currently in the midst of an aggressive expansion push in Europe.

Last year, the company announced plans to launch 25 new health clubs throughout northern Italy over the next three years, while also having "sizeable" market shares in both Spain and Portugal.

The group has more than 90 sites in South Africa, with more scheduled to open this year, and an international portfolio currently standing at just short of 190 clubs.

The group reported annual revenues of £391m for 2009 – a 15 per cent increase on 2008. Pre-tax profits for 2009 were £101.1m, up from £85.5m in the previous year.

Work starts on Oxford scheme

Work has started on a revamp of Oxford's Barton Pool to provide a 40-station gym, improved changing facilities and a new reception area.

Improvements will also be carried out on the 25m pool and existing studio as part of work at the four-year-old facility, which is to be renamed Barton Leisure Centre and is run by Fusion Lifestyle.

An extension next to the pool and entrance will house the new facilities and is designed in the same style as the complex, while also incorporating eco-friendly measures.

Two new openings for Gym Group

By **Tom Walker**

Budget club operator The Gym Group has opened a new site in Birmingham, increasing the number of sites in the company's portfolio to eight.

The new club, located on Birmingham High Street, is the second new Gym to open this month, following the launch of Brighton Gym on 7 July.

The 22,000sq ft (2,044sq m) Birmingham site – equipped by Matrix – is the operator's largest site to date and boasts 170 pieces of equipment.

The Gym Group chief executive officer John Treharne, said: "The opening of Birmingham and Brighton is another exciting milestone for us.



The budget chain plans to expand across the country

"We are now over halfway through our national roll-out and it's great to see the concept coming to life.

The Gym Group also operates fitness facilities in Guildford, Surrey; Leicester; Liverpool; and Manchester, as well as a further two clubs in London – Hounslow and Vauxhall

Approval for Nottingham leisure plans

Victoria Leisure Centre proposals receive final go-ahead by central government

By **Tom Walker**

Plans to replace the Victoria Leisure Centre in Sneinton, Nottingham, with a new £9m facility have been given final approval by the government.

The plans were given the green light by Nottingham City Council (NCC) in June, but as the building is located within a conservation area and is owned by the council, plans required the approval of communities secretary Eric Pickles.

Designs for the complex have been drawn up by London-based architects Levitate and form part of a wider £32m NCC-led scheme to upgrade leisure provision across the city.

Plans for the new Victoria Leisure Centre incorporate a



The dated centre will be replaced with a new, modern facility

six-lane, 25m swimming pool with separate children's pool and fun splash play area and fitness and health suites.

The centre is also designed to complement efforts to revitalise the Sneinton Square area, which aims to improve links

between the city centre and surrounding neighbourhoods.

The decision will bring to an end the efforts of the Save Victoria Baths pressure group, which was seeking to have the council's decision to redevelop the baths overturned.

Maidstone Leisure centre reopens after revamp

By **Tom Walker**

Maidstone Leisure Centre in Kent has reopened to the public following a £4m renovation.

The project, undertaken by ISG, included the creation of a two-storey, 500sq m (5,382sq ft) fitness suite; two new exercise studios; a new toddler play pool with interactive water features and new swimming pool changing facilities.

Life Fitness has installed more than 70 pieces of



The centre's new cv equipment

Elevation Inspire CV, Signature Strength series resistance equipment in the fitness suite.

Designed in the Life Fitness Journey layout, members are encouraged to use zones dedicated to different muscle groups and fitness levels.

The layout is also designed to aid group training and includes a free weights section and circuit series equipment.

The revamp took just over six months to complete and was funded by Maidstone Borough Council. The centre will be managed by Maidstone Leisure Trust and Serco Leisure.

New equipment for Western Isles facilities

Two leisure centres located on the Outer Hebrides of Scotland are set to benefit from the installation of new cardiovascular equipment under plans confirmed by the council.

Comhairle nan Eilean Siar – the Western Isles Council – has revealed that Technogym will supply Ionad Spòrs Leòdhais, Stornoway, and

the Lionacleit Sports Centre in Benbecula with a number of new machines.

A new strength and conditioning area is also currently being created at Ionad Spòrs Leòdhais as part of the council's wider investment in local facilities. The new machines will be installed from 16 August.



**leisure media
STUDIO**

Industry-leading marketing and design services

With more than 30 years' experience, **leisure media studio** will work with you to create bespoke print and web solutions to power your marketing

- Web design
- Email marketing
- Contract publishing
- Graphic design
- Digital turning pages
- Image retouching
- Illustration
- Advertising design
- Direct mail
- Print

LET US QUOTE YOU

Contact Tim Nash
Tel +44 (0)1462 471917
timnash@leisuremedia.com

IN BRIEF

Lincoln City unveils new 3G artificial pitch

► Lincoln City Football Club (LCFC) has officially unveiled a new 3G artificial pitch at Sincil Bank, which aims to provide facilities for the local community and Sincil School Sports College. The new surface was part-funded by the npower League Two club and the school, which will use the all-weather training facility during term time and will also provide a space for LCFC's Centre of Excellence players to train. LCFC chief executive Dave Roberts said: "The facility will provide a top class surface for the local community."

Bristol City stadium proposals dealt blow

► Bristol City Football Club's plans for a new 30,000-seat stadium have been dealt a blow after the local authority refused permission for a supermarket development. Sainsbury's had planned to move its Winterstoke Road store to the club's current Ashton Gate site to help fund the development of the proposed Ashton Vale venue. Bristol City Council's development control committee (south and east), however, went against the advice of planning officers and rejected the supermarket scheme.

£46m Life Centre will not include ice rink

► The £46m Life Centre in Plymouth will now definitely not include an ice rink – contrary to original suggestions, the city council has announced. When the Plymouth Pavilions closes next year, skaters will be left without a local ice rink – the nearest will be in Bristol and Swindon. Plans for a rink were discussed but never formed part of the official proposal. However, the council has said it has allocated money to put towards new skating facilities in future.

Council overturns Sobell Centre plans

Local authority moves in favour of refurbishing existing facilities over a new-build

By **Pete Hayman**

Islington Council has overturned a decision by a previous administration to pursue the demolition and rebuilding of the Sobell Centre in London.

In September 2008, the Liberal Democrat-led council decided to approve plans for a new multi-million pound complex to replace the current facility, which opened in 1973.

However, the now Labour-run Islington Council has moved to rescind the decision in favour of refurbishing the Sobell Centre after it was claimed a public consultation did not include that option.

A report put before the council's executive last month said: "The current financial



Opened in 1973, the complex had been earmarked for demolition

climate will not allow for a major renewal of the Sobell Centre and an incremental refurbishment programme will provide for its future."

The council recently reopened the centre's ice rink following work to improve the

facility, which has included a new coolant gas supply and protective viewing surround.

The improvements form part of a wider £1.7m package to include repairs to the centre's roof and upgraded heating, lighting and ventilation systems.

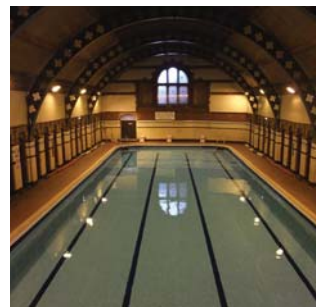
£4.74m renovation for Birmingham sports centre

By **Pete Hayman**

Birmingham's Aston University has announced that the Woodcock Sports Centre is to undergo a £4.74m revamp.

The Grade II-listed venue, which boasts one of the city's oldest operational swimming pools, will benefit from an extended gym space and a martial arts and dance studio.

Linford Building has been appointed to deliver the structural renovation and



The pool is set to be retained

refurbishment part of the scheme, designed by Warwick-based Robothams Architects

and project managed by Edward Finch Partnership.

The existing pool and the sports hall will be retained as part of the project, due to be completed by September 2011.

The university's director of campus services, Mike Kirkman, said: "The centre serves students, staff and the surrounding community and is a valuable community resource as it is the only public swimming facility in the city centre area of Birmingham."

Headingley Carnegie's new £21m pavilion unveiled

HRH The Duke of Gloucester has officially opened the new £21m Carnegie Pavilion at Headingley Cricket Ground in Leeds, West Yorkshire.

Designed by architect Will Alsop, the dual-use facility has been developed as the result of a partnership between Leeds Metropolitan University and Yorkshire County Cricket Club (YCCC).

The facility will be used by the club during the summer as a cricket pavilion, which will boast a media centre, improved player changing and treatment rooms, hospitality suites and spectator seating, while the university will use the building for teaching space during the academic year.

Tigers to pursue stadium development

Castleford's rugby league team looking for a move to new Glasshoughton ground

By **Pete Hayman**

Castleford Tigers rugby league club is to pursue plans for a new stadium after securing an agreement with developer Waystone that secures land for the proposed development.

The announcement comes after Wakefield Trinity Wildcats rejected a possible ground share with the Tigers and reaffirmed its commitment to a new ground at Newmarket.

Waystone has already been given the green light for the Glasshoughton venue as part of a wider 335-acre (136-hectare) mixed-use development, which includes an Xscape venue.

Ramsden and Partners has been appointed to draw up detailed designs for the stadium, which will occupy a



Castleford Tigers hopes work will commence by spring next year

20-acre (8-hectare) site as part of the agreement and it is hoped that work will be underway by spring 2011.

Castleford Tigers chief executive Richard Wright said: "This agreement secures the 20-acre site at Glasshoughton on behalf of the club and is

another step forward in delivering the stadium."

Meanwhile, Wakefield and District Community Stadium Trust revealed it had reached agreement with Wakefield Trinity Wildcats and the local authority over the development of the Newmarket venue.

IN BRIEF

Green light for Bath Rugby stand extension

► Bath Rugby has been given the green light to increase the capacity of The Rec to 12,300, after the Charity Commission agreed to an extension of the IPL Stand. The club has also been successful in securing planning consent for the scheme, which aims to improve the "rake" of the stand and provide a new covered disabled viewing area.

Rotherham United submits ground plans

► Rotherham United Football Club (RUF) has submitted plans for the construction of a new 12,000-seat stadium at the Guest and Chrimes site to the local authority. The npower League Two club currently plays its home games at the Don Valley Stadium in Sheffield after leaving Millmoor in 2008. However, RUFC is now eyeing up a return to the South Yorkshire town. Rotherham Metropolitan District Council will now determine the fate of the planning application. It is hoped that the council will consider the proposals in the autumn.

DCMS defers free-to-air TV events decision

► A decision to review a list of major sporting events protected for free-to-air television has been put on hold by the Department for Culture, Media and Sport (DCMS) until 2013. The announcement means that home Ashes cricket – the four-yearly Test match cricket series between England and Australia – is set to remain on Pay TV beyond 2016. An independent panel chaired by former Football Association chief David Davies, set up by the previous government, had advocated the restoration of home Test match cricket to the list of 'crown jewel' events.

Budget golf course unveiled

A new low cost golf course, which allows players to book tee times online without any membership fees, has launched in Guildford, Surrey.

The 18-hole Clandon Golf will operate purely on a 'pay as you play' basis and aims to attract players of all abilities.

It has no club house or other facilities normally associated with golf clubs and all bookings and payments are made online.

The venture is the brainchild of Guy Buckley, formerly of IMG and the Clubhaus Group. The course was built by Hampshire-based Kestrel Contractors, which will also maintain the course on behalf of the owner.

Table tennis scheme hits London



Acrobatic table tennis kick-started the new initiative in the capital

By **Pete Hayman**

Ping-pong tables were lined up across the concourse of London's St Pancras International station on 22 July to mark the launch of a month-long scheme to get more people playing the sport.

A total of 100 tables will be set up at sites across the capital as part of the Ping! initiative, including Westfield Shopping Centre and Tate Britain.

The English Table Tennis Association and the participatory arts group, Sing London, have teamed up to deliver the Sport England-funded scheme to provide ping-pong tables for free, impromptu use.

A programme of masterclasses, competitions and other activities are being planned, such as a 'singles for singles' dating event. Around half of the tables are set to be retained on a permanent basis.

IN BRIEF

Pioneer Museum to receive £2.3m upgrade

► The Pioneer Museum in Rochdale – the birthplace of the Co-operative movement – is to receive a £2.3m makeover. The Co-operative Heritage Trust has been awarded £1.5m by the Heritage Lottery Fund to fund the development. The museum will be transformed, creating new facilities and learning spaces. Displays will be designed incorporating images and objects from the National Co-operative Archive while new specialist staff will be recruited to work with schools, colleges and the local community using the archive and museum collections.

£1.2m Camera Obscura revamp completed

► Edinburgh's Camera Obscura attraction has reopened its doors after a £1.2m renovation project. The attraction, located on the city's famous Royal Mile, has extended 200sq m (2,153sq ft) into the upper two floors of the adjacent 'Ragged School' – a former 19th century home for destitute children – and new exhibits include the Vortex Tunnel of light and the Get Lost mirror maze. It also boasts an Ames Room, which creates giants and dwarves of those that enter it, was originally created by Adelbert Ames in the 1930s.

Yorkshire Museum revamp nearly complete

► The £2m refurbishment of Yorkshire Museum in York is nearly complete. The city's Roman heritage will be the central theme for the new look museum, with major exhibitions also highlighting its strong medieval and natural history collections. Objects on show will include the Middleham Jewel, the most significant Viking Hoard to be found in 150 years and Britain's biggest Ichthyosaur.

Merlin reveals Blackpool Tower plans

Operator aims to develop new 'Eye' attraction overlooking historic seaside resort

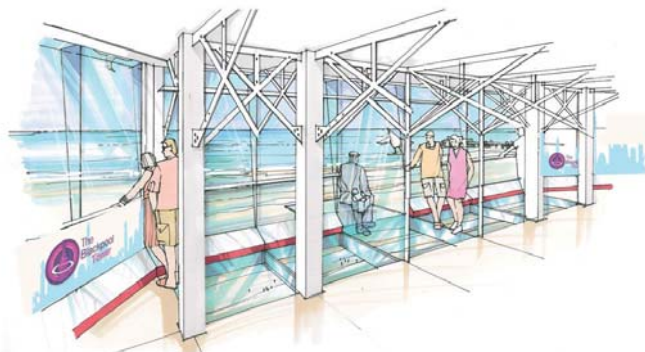
By **Pete Hayman**

Attractions operator Merlin Entertainments has unveiled its plans for a major transformation of Blackpool Tower and Louis Tussauds waxworks.

Earlier this year, Blackpool Council completed the acquisition of the iconic tower, the Winter Gardens and the Golden Mile Centre in a bid to revitalise the Lancashire resort. The council then appointed Merlin to operate the attractions on its behalf.

Three of Merlin's brands – Madame Tussauds, Dungeons and 'Eye' – will be arriving in Blackpool, with plans for the Blackpool Tower Dungeon due to be submitted on 9 August.

An Eye observation deck overlooking Blackpool promenade and seafront, including 4D pre-show, and a sympathetic restoration of the



An observation deck and 4D pre-show are planned for the Tower

Grade I-listed structure are also proposed by the operator.

Elsewhere, a new Madame Tussauds attraction is earmarked to open in April 2011 and £200,000 has been invested in upgrading the resort's Sea Life attraction. Blackpool Tower's existing venues will be retained.

Blackpool Council leader Peter Callow said: "Bringing the

Tower into public ownership is already paying off."

Iain Hawkins, heading up Merlin's Blackpool operations, added: "A great deal has been achieved in just three months, but by the time we move in in November we will have much more detailed plans to show the people of Blackpool to encourage them to share our enthusiasm for this project."

Chocolate attraction for Bristol?

By **Tom Walker**

A new visitor attraction based on the history of chocolate is being planned for Bristol.

Chocolate Harbour is poised to include a multi-media exhibition, a "chocolate emporium", an in-house chocolaterie and teaching school, as well as a restaurant.

The plans are the brainchild of entrepreneur and local event organiser Laurence Trackman, who describes himself as "a life-long devotee of the history and culture of chocolate".

To be located at Bordeaux Quay, Trackman said the £2.5m centre will be funded through private investment.

"We're planning to open in the summer of 2011 to coincide



The attraction will be located at Bristol's Bordeaux Quay

with the launch of the spectacular £25m M Shed museum of Bristol," Trackman said.

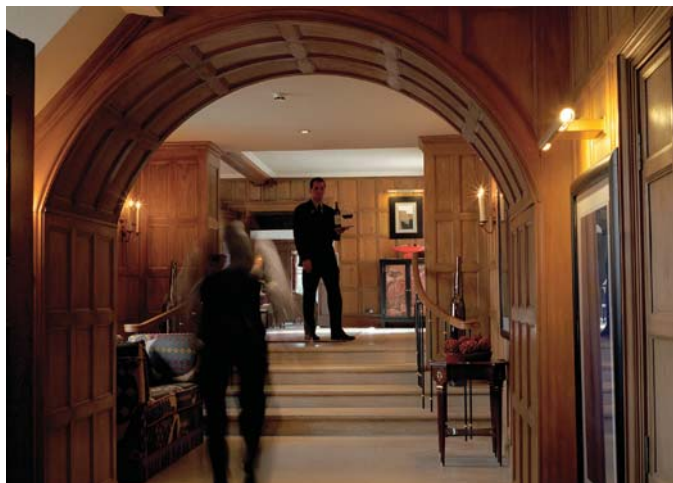
"We are currently working very closely with Bristol City Council in all respects, which sees this project as one more achievement in bringing diversity to the city's visitor attractions, and to the social life of its historic Harbourside."

New water ride for Thorpe Park

In line with its Medium Term Development Plan that was submitted earlier this month, Merlin Entertainments' Thorpe Park theme park has applied for full planning permission to install a new water ride.

Subject to approval being received from Runnymede Borough Council, the 64ft-high (19.5m) ride – to be built by Canada-based WhiteWater West – will be located in an area occupied by Octopus Garden.

With a theoretical capacity of 600 people per hour, the ride will be a family attraction where up to six people ride upwards in a raft via a conveyor belt to the top of the structure and then spiral downwards on a chute to ground level.



The capital's hotels have seen occupancy increase so far this year

'Stable' month for London hotels

Capital's recovery on course as occupancy increases

By **Pete Hayman**

Hotel operators in London are continuing to outperform their regional counterparts, according to the latest monthly figures released by PKF Hotel Consultancy Services.

The capital's hoteliers posted a 10.3 per cent growth in average daily room rate per occupied room in June 2010, compared with June 2009.

For the first six months of the year, London hotels saw a 2.3 per cent increase in occupancy and a 9.6 per cent growth in rooms yield as the sector

continued to recover, although regional hotels have seen rooms yield decline by nearly 1 per cent and room rate fall by 3.7 per cent despite a 3.1 per cent growth in occupancy.

Robert Barnard, partner for hotel consultancy services at PKF, said: "The figures for London over the first half of this year suggest the capital is firmly into its recovery stage which is positive.

"The picture is not exactly the same for regional hotels, but the increases in occupancy levels so far this year are a good sign for hoteliers."

Host buys Le Meridien Piccadilly

Jones Lang LaSalle Hotels has confirmed that it has completed the sale of Le Meridien Piccadilly, in the heart of London's West End, on behalf of Starman Hotels.

The Grade II-listed hotel has been acquired by an affiliate of Host Hotels and Resorts in a deal worth £64m.

The 266-room leasehold hotel recently underwent a revamp programme and boasts a restaurant; a health

and fitness club; and an indoor swimming pool.

Starman Hotels property director Felicity Black-Roberts said: "We chose Host due to their track record and they have secured an excellent addition to their portfolio."

Jones Lang LaSalle Hotels managing director Robert Seabrook added: "This confirms the strong appetite investors have in the London hotel market at present."

In praise of the sector's older employees

As jobs are created within the industry, older-age working could become more prominent

It may be summertime, but this is as good a moment as any to consider the long-term demographic trends which suggest a distinctly autumnal outlook as far as the country's population is concerned. In this regard, the government's Office for National Statistics estimates that by 2033 nearly a quarter of the population will be aged over 65, compared with around 16 per cent now. So why is this of interest to us in the hospitality sector?

Traditionally, the sector does not have the best of reputations when it comes to employing older workers or encouraging its people to work into older age. Bars, pubs, restaurants and hotels will often be staffed by younger workers, and the sector can have a reputation for a physically demanding, high pressure, long-hours culture.

At the same time, however, of all the challenges facing the industry in the future, the availability of skilled people will remain by far the greatest. Here in the UK, by 2017 it is predicted that more than 200,000 new jobs will be created within the hospitality sector. If one then adds on the replacement requirement for existing jobs, the figure becomes 1 million posts to fill. Developing a capable workforce must therefore remain the number one priority if the industry is to enjoy the benefits of the exciting growth predictions.

The irony is that hospitality does lend itself very well to older-age working. For example, the industry attracts many people who are self employed or are business owners, and therefore in control of how and when they retire.

Secondly, the normally negative image of the sector's long hours can also be made into an attractive proposition to a more flexible older worker. Long hours, and a frequently 24-hour operation in parts of the industry, provides an chance for older people to be employed at times which might be more difficult for others with family responsibilities for example.

In short, demographic changes will mean the sector will have little option but to embrace older workers and accept later-life working as the norm rather than the exception. To assist, organisations such as the educational charity The Life Academy, the Employers' Forum on Age and the Third Age and Employment Network, offer useful resources, while the industry's sector skills council, People 1st, can help employers when it comes to planning for and managing older workers.



Institute of Hospitality
formerly HEMA

PHILIPPE ROSSITER
is chief executive
of the Institute of
Hospitality (IoH).
Leisure Opportunities is a member
benefit of the IoH,
for your free copy
call 01462 471932

IN BRIEF

Hornsey Town Hall scheme approved

► Haringey Council has approved plans for the transformation of Hornsey Town Hall into a multi-million pound arts centre for Crouch End, London. The redevelopment of the Grade II*-listed building received the green light from the council's planning committee on 12 July. John McAslan and Partners is behind designs for the new-look Hornsey Town Hall, which will incorporate a new two-screen arthouse cinema, a flexible performance and music space and creative studios.

Finchley Youth Theatre reopens

► Finchley Youth Theatre in north London – part of the Barnet Youth and Connexions Service – has officially reopened following the completion of a refurbishment scheme. The venue, which is open to young people across the London Borough of Barnet, now includes a new foyer, a box office reception and a drinks and seating area. Retractable seating has also been installed in order to allow the theatre space to be used for workshops and teaching.

Funding to promote Scottish island culture

► An initiative devised by six local authorities in Scotland to promote island culture to mainland audiences has received £820,000 from the European Union. Scotland's Islands aims to use contemporary and traditional music and art to engage with a wider audience as part of the project, due to launch in April 2011 and extending into spring 2012. The scheme, which will be co-ordinated by Western Isles Council – Comhairle nan Eilean Siar, has received more than £1.8m from a range of sources.

Green light for Tate Britain proposals

Local authority approves extensive multi-million pound overhaul of London gallery

By **Pete Hayman**

Tate's plans for a major multi-million pound redevelopment of its original London gallery – Tate Britain – have been given the green light.

Planners at Westminster City Council (WCC) have approved the scheme which is expected to cost around £45m and aims to improve the attraction's galleries and help conserve the Grade II*-listed, Sidney Smith-designed building.

The project will see core visitor areas remodelled and renovated in order to open up the domed atrium at the heart of Tate Britain, while learning studios and public spaces will also be created to meet increasing demand.



Tate's original London gallery is to benefit from revamped areas

Designs – drawn up by Caruso St John Architects – also include the revamp of the main entrance on Millbank. The River Room, formerly a watercolour gallery room divided into three offices, will be restored to one single room for public use.

Alistair Moss, chair of WCC's planning and city development committee, said: "These plans will enhance this building, and improve an already successful and internationally renowned gallery making it even better for people who want to visit it."

Trafalgar Square's Fourth Plinth shortlist unveiled

By **Pete Hayman**

A number of artists have been shortlisted to produce the next commission for the Fourth Plinth in London's Trafalgar Square, which is currently occupied by Yinka Shonibare's *Nelson's Ship in a Bottle*.

An exhibition is due to be held in the crypt of St Martins in the Fields from 19 August to showcase preliminary models and sketches from each of the proposals for the scheme.



The plinth's current occupant

Mariele Neudecker; Hew Locke; Allora and Calzadilla; Elmgreen and Dragset; Brian

Griffiths; and Katharina Fritsch are vying for the commission, which will take its place on the plinth from the end of 2011.

London mayor Boris Johnson said: "It's that time again, when the art world braces itself for a spurt of bold ideas for what is surely the premier public art spot in Britain

"This is the chance for today's most exciting artists to create something in one of the most historic and traditional settings imaginable," he added.

Cultural bodies in spending cuts appeal to government

Leaders of some of the country's most prominent cultural institutions – spearheaded by Arts Council England – have appealed directly to Prime Minister David Cameron not to cause "irreparable damage" to what they refer to as its most economically successful sector in the imminent Spending Review.

They argued that, while the cultural sector is willing to play its part in the UK's economic recovery with realistic cuts, the 25-40 per cent reductions proposed would be "catastrophic".

The plans would add to the 3.5 per cent cuts proposed this year, as well as the sector's £322m contribution to the 2012 Olympics.

Sport tourism prospers in the UK

Two million foreign visitors to Britain attended sports events during 2008

By **Martin Nash**

According to a new survey by national tourism agency VisitBritain, three million visitors to the UK in 2008 spent £2.3bn watching and playing sport.

The survey shows that nearly two million visitors watched sport in Britain in 2008, the most recent year for which full figures are available. They often did this at a venue such as Lord's or Hampden Park, spending more than £1.3bn in the process.

Meanwhile 1.4 million visitors played amateur sport at more modest British locations, contributing another £1.3bn. Some both watched and played.

VisitBritain calculates that sporty foreign tourists accounted for about 14 per cent of all spending by visitors in 2008, with a sporting visitor spending far more – an average of £900 per trip – than 'ordinary' foreign tourists who typically spend £500.



Venues such as Lord's attract tourists

Football is revealed to be the key attraction for foreign spectators. Around 1.2 million went to a match, of whom 267,000 were Irish, 95,000 Americans, 88,000 Germans, 86,000 Norwegians, 75,000 Spanish, 65,000 Italians, 55,000 Australians and 52,000 Dutch.

£16m to develop Welsh 'adventure tourism'



Mountain bike tourism is in line to benefit

By **Pete Hayman**

Plans for the creation of four Welsh tourism centres, which will offer facilities for outdoor and adventure activities, have been handed a £16m funding boost.

The Welsh Assembly Government has announced that funding will help create new centres of excellence.

North Wales Cycling Activity Tourism Centre of Excellence will receive more than £2.2m, which encompasses nine components and includes upgraded facilities at Coed Llandegla near Wrexham.

DCMS reveals UK's world heritage candidates

Nearly 40 UK locations have applied for World Heritage Site status, according to the Department for Culture, Media and Sport (DCMS).

Tourism minister John Penrose has published a list of bids for the country's Tentative List of the 38 sites looking to be included in the UK's submission of candidates to UNESCO in 2011.

Among the sites bidding is the Birmingham Jewellery Quarter; Historic Lincoln; Merthyr Tydfil; Offa's Dyke; and the Turks and Caicos Islands.

Brunel's Great Western Railway; Chatham Dockyard and its Defences; the Dover Strait; Jodrell Bank Observatory; the Norfolk and Suffolk Broads and the Lake District are also included.

It is time to listen to Elton

Government should look at existing licensing reviews



KURT JANSON is policy director of Tourism Alliance

One of the few things that the Labour government and the new coalition agreed on is that, as a nation, the British drink too much alcohol; that this causes anti-social behavior and that it is a burden on the health system. This view resulted in labour introducing the Licensing Act 2003 and the new Mandatory Code of Practice for the sale of alcohol.

While well intentioned, these requirements had a significant unintended impact on small businesses in the tourism sector. Businesses such as B&Bs, guesthouses and holiday park operators that wanted to provide small amounts of alcohol for customers went from paying £30 and filling in a simple form to suddenly paying a fee based on their rateable value (typically at around 10 times the previous amount) and having to fill in a much more complicated application. As a result, many just stopped selling alcohol.

Now the new government aims to continue where the Labour government left off. The Home Office has just released a consultation that includes a proposal that applicants for an alcohol license undertake an assessment of the impact that their selling of alcohol will have on the local community.

It is time that the government implemented the recommendations of the Elton Review on Licensing and introduced a de minimus approach to licensing so that businesses selling small amounts of alcohol can go back to paying a small fee and filling in a simple registration form.

leisure property news

Visit leisureproperty.com for the latest news on Properties, developments, tenders and investment.

IN BRIEF

Work starts to improve Corby's George Street

► Corby Borough Council (CBC) has announced the start of work on a scheme to transform the town's George Street, which will deliver improved pedestrian access with the leisure area. The local authority, together with Northamptonshire County Council, secured £3.3m towards the work through the North Northants Development Company and hopes the scheme will take up to nine months to complete. Highways service provider MGWSP will carry out the work, which is designed to complement the Corby East Midlands International Pool and Corby Cube. CBC lead member for regeneration Jimmy Noble said: "The improvements to George Street are part of an overall masterplan and key project for Corby that links up and complements the brand new Corby Cube, Corby East Midlands International Pool, Willow Place and rail station."

Council reveals £52m cost of leisure scheme

► A £13.3m leisure complex in Wolverhampton, which opened in December 2006, is set to cost local taxpayers more than £52m by the time the council pays off the scheme. Wolverhampton Swimming and Fitness Centre, which includes a 140-station gym, a six-lane, 25m swimming pool, and a leisure pool, was built under a Private Finance Initiative (PFI) and is located in Wednesfield. The scheme was led by Wolverhampton City Council in partnership with DC Leisure, which secured the contract to operate the venue for a 30-year period ending 31 October 2036.

London's West End set for renovation

NWEC outlines new pedestrian-friendly measures to further boost area's appeal

By **Pete Hayman**

London's West End is set for a major transformation as part of efforts to attract an additional 50 million visitors a year by 2010, which have been unveiled by the New West End Company (NWEC).

The group, which represents 600 businesses on Regent Street, Oxford Street and Bond Street, set out six aims that are designed to develop the area as a leisure destination.

NWEC proposals include a major event to coincide with the capital's Cultural Olympiad and the development of a visitor pavilion on Oxford Street ahead of the 2012 Games, as well as 20 public spaces to increase visitor "dwell time".

One of the six priorities also incorporates plans to prioritise



More diagonal pedestrian crossings are planned for the West End

pedestrians using the streets, which is set to include the introduction of shopping hours, an increase in the number of diagonal crossings at major junctions and 50 per cent more space for pedestrians.

NWEC chair Dame Judith Mayhew Jonas said: "We have embarked on an ambitious

redevelopment and rejuvenation of London's West End over the past 10 years and today sit at a crucial crossroads.

"It is imperative that we sustain our current momentum going forward, not just in key public realm improvements but across the board in all our initiatives and lobbying."

Scottish golf resort planned

A £100m golf resort is being planned for Royal Deeside in Aberdeenshire.

Plans involve expanding the Inchmarlo Golf Centre, which is already a four-star resort with two courses – one of which is championship standard.

According to *The Press and Journal*, the new resort proposals include a 75-bed hotel that would incorporate a leisure centre, a spa, a swimming pool and conferencing facilities. A new restaurant would link the golf club and the hotel.

£600k for Urban Village scheme

By **Pete Hayman**

Coastal Housing Group's (CHG) plans for a multi-million pound Urban Village development in the heart of Swansea have been handed a boost by the Welsh Assembly Government.

Welsh deputy minister for housing and regeneration Jocelyn Davies revealed that the Strategic Regeneration Area initiative will contribute £600,000 to help fund the project, which aims to revitalise the city's High Street area.

The Urban Village project – designed by Mathias Holder Architects of Cardiff – incorporates a series of new courtyard



The proposed 'village' project

spaces linking shops, food and drink outlets and offices.

CHG's plans also form part of a wider bid to regenerate the High Street area, which includes the railway station and another development being led by Gwalia Housing Association.

LPF: When healthcare meets health & fitness



An early evening LPF seminar to be held at:

David Kerr Associates, 32 Welbeck St, London W1G 8EU
on Tuesday 21st September 2010, 6.15pm - 8.30pm

CONTENT:

The seminar will review the opportunities and prospects for co-operation between the two sectors, looking in particular at Government health policies, medical treatment and social attitudes.

This will be a stimulating and interesting first stage examination of the trend that seems likely to lead to future development of health parks in the UK.

SPEAKERS:

Garri Jones of Circle Health,
Julian Evans, Head of Healthcare at Knight Frank

PROGRAMME

6.15pm	Seminar registration	Fee:
6.30pm	Seminar introductions	£45.00 + VAT LPF members
6.40pm	Speaker presentation	£55.00 + VAT member guests
7.20pm	Q&As	£90.00 + VAT non members
7.30pm	Drinks and networking	
8.30pm	Close	

TO BOOK OR FOR MORE INFORMATION CONTACT:

Michael Emmerson, LPF Administration
E: info@leisurepropertyforum.org
T: 01462 471932 F: 01462 433909
W: www.leisurepropertyforum.org

**RESTRICTED
NUMBERS**
BOOK EARLY TO AVOID
DISAPPOINTMENT

TO LET

MEMORIAL AVENUE LIBRARY WORKSOP, NORTH NOTTINGHAMSHIRE



Expressions of interest are invited to lease the former Memorial Avenue Library for a term of 15,20 or 25 years .

The building is situated in the Canch Park which is currently undergoing a £2m refurbishment programme. This includes a new fountain pool, adizone play area and new skate park . Further improvements planned for later this year include new footpaths, bridges and a piazza behind the library premises.

This is an exciting opportunity to secure premises as part of a major park refurbishment programme.

Potential uses for the building include Café/ Restaurant, Conferencing/ Wedding facilities and other uses subject to planning. The Council's objective is that the building plays a key role in the refurbished park.

Net Internal Floor Area 1026 sq.m./11049 sq.ft.

For letting particulars please email
Alison.bagley@bassetlaw.gov.uk
or call (01909 533213) ref MCW

Expressions of interest by 30th August 10



Hospitality & Leisure

Specialist Property Services

**Valuations, Sales, Aquisitions,
Rent Reviews, Expert Witness.**

Contact: Colin White
colin.white@edwardsymmons.com

London • Bristol • Leeds • Liverpool • Manchester • Plymouth • Southampton

**Edward
Symmons**

020 7344 4500
www.edwardsymmons.com

Rating • Planning & Site Licensing

**CHARLES
F.JONES & Son**
LLP
CHARTERED SURVEYORS

**Leading Professional Advisors
to the Leisure Industry
for over 70 years**

Charles F Jones & Son LLP

01244 328141 www.cfj.co.uk

16 Grosvenor Court Foregate Street Chester CH1 1HN

Valuations • Sales & Acquisitions

**UK and international
property experts**
covering all sectors of the
leisure and hotel industry

Alan Plumb
+44 (0) 1865 269000
aplumb@savills.com
savills.co.uk/leisure

savills
savills.com

HL HUMBERTS LEISURE

**specialist professional
leisure property expertise**

- Sales
- Rent reviews
- Lease renewals
- Consultancy
- Planning
- Arbitrations
- Expert witness
- Viability & feasibility
- Purchases
- Rating
- Valuations
- Funding

London +44 (0)20 7629 6700 South +44 (0)1962 835 960
North +44 (0)1756 799 271 South East +44 (0)1273 325 911
South West & Wales +44 (0)29 2022 6892

www.humberts-leisure.com



The company is already looking to expand its services into the UK

The Running School enters Ireland

Franchise-based concept to teach 'efficient running'

By Tom Walker

The Running School has opened its first franchise in Ireland, at the Sports Injuries Sports Medicine Clinic in Castlebar, County Mayo.

Founded by Mike Antoniadis, The Running School is a franchise-based concept designed to teach anyone - from children to elite athletes - to run faster and more efficiently in the space of six hours.

The Sports Injuries Sports Medicine Centre - which offers a physio clinic, rehab room and performance centre (gym) - has

an existing client base comprising both recreational and elite athletes. The Running School concept has been introduced not only to help improve performance and speed, but also to ensure that clients in the final stages of rehab are running efficiently before ramping up their training.

It will operate as a full franchise operation on-site, with members of staff being trained in all of the methodologies and protocols.

The Running School hopes to roll out further franchises in Ireland and the UK.

New rugby academy for South Wales

The Welsh Rugby Union (WRU) has opened its newest academy at Parc Eirias in Colwyn Bay, North Wales, which aims to develop a "sustainable player pathway" in the region.

A total of 11 players, who have been selected through their performances for Gogledd Cymru (North Wales) age grade sides, will now benefit from coaching, analysis and conditioning

support to further develop their skills. Coleg Llandrillo Cymru and Rydal Penrhos School have launched a new integrated timetable to enable the players to continue studying, while also participating in 14-16 hours of rugby development a week.

WRU's Joe Lydon, said: "The establishment of the academy is key to the long-term production line of home grown players."

Premier launches Power Clubs

By Tom Walker

Premier Training International is to launch a new qualification for personal trainers at this year's Leisure Industry Week (LIW) show in Birmingham.

Designed by Premier, the new Power Club course is based on methods first used in Persia and later adopted by the Indian military.

Power Club training first surfaced in the UK during the age of the British Empire, when soldiers learned and developed the method after being introduced to it on the sub-continent. Interest faltered before WWII but now Premier will be restoring it as a training modality for the industry.



lobo voluptat iureetue tat aut

The exercises are based around human movement patterns and will be marketed as dynamic group sessions.

Premier is hoping that the new method will establish itself among the top trends of 2011.

Consultancy courses by Carlton

By Sarah Todd

Training provider The Carlton Institute is to offer a new portfolio of consultancy services for owners and operators of spas.

The new team has a range of specialist areas of knowledge that can be tailored to fit a client's specific needs. These include a treatment skills assess-

ment which is an independent standards assessment of a facility or team with recommendations on how to improve where needed.

Other areas of expertise include how to grow customer bases and boost business skills including training courses for improving retail sales; benchmarking services; customer research and website audits.

Social media workshops for spas

By Sarah Todd

Marketing and training services provider Sleeping Lion has unveiled two new social media workshops for the spa and salon industry.

The first, called Building A Successful Online Media Strategy, is a one-day workshop that can also be tailored to a half-day course if required. The second, called Social Media Marketing In Six Weeks, takes

place over one hour per day as an online course to help spas better connect directly with their customers and is run in association with online reputation management company Tiger Two.

Sleeping Lion was launched in 2005 by marketing professional Sarah Taylor. During Taylor's career, she has worked with brands including Six Senses, Mandara Spa, The Savoy Group and The Caledonian Club.

Stewart Regan to head Scottish FA

Yorkshire County Cricket boss to take replace Gordon Smith as SFA chief executive

By **Pete Hayman**

Stewart Regan has stepped down as chief executive of Yorkshire County Cricket Club (YCCC) after accepting an offer to lead the Scottish Football Association (SFA).

The 46-year-old has been named SFA chief executive to replace Gordon Smith, who announced his departure from the national governing body in April after three years in the

position. Regan is also former director of the Football League Championship and strategic planning director at Bass Brewers. During his time at YCCC, he oversaw a range of schemes, including the opening of the £21m Carnegie Pavilion.

SFA president George Peat said: "The role requires a wide range of skills and a thick skin but we believe Stewart is the perfect candidate."



Regan will lead the Scottish FA

PEOPLE SHORTS

● Bev Risman, a former dual-code international rugby player, has been unanimously voted to become the next president of the Rugby Football League (RFL). Risman, who played for the British and Irish Lions rugby union team in 1959 before captaining the Great Britain rugby league side in 1968, will represent the RFL in an ambassadorial role over the next 12 months.

● The Peak District National Park Authority has re-elected Narendra Bajaria CBE as its chair and revealed a number of new committee members. The authority's new deputy chair is High Peak Borough Councillor Tony Favell and the committee will be made up by vice-chair of planning Trevor Bagshaw; chair of services, Christopher Pennell; and vice chair of services Gill Heath.

Gala Coral to seek new chief executive

UK-based bingo hall and casino operator Gala Coral has announced that chief executive Dominic Harrison is set to step down to pursue "new career opportunities".

Executive chair Neil Goulden has been named interim chief executive while the company begins its search for a replacement, after Harrison confirmed plans to

leave Gala Coral after six years. Harrison, who was appointed chief executive in October 2008, is set to remain with Gala Coral until 1 October to ensure a smooth transition.



MSc Applied & Interdisciplinary Sports Science

This innovative MSc integrates each of the sports science disciplines; physiology, psychology, biomechanics and nutrition, to tackle such issues as effective training strategies and methods for optimising sports performance.

Taught by internationally recognised sport and exercise scientists, the units of study are grounded in our research and consultancy strengths. You will acquire excellent practical skills in our brand new laboratories to provide sports science support in a variety of settings from health and fitness, to athletes, sports clubs and teams.

For full information and how to apply visit
www.lsbu.ac.uk/sports or call 020 7815 8257.

Love Pilates?

Whatever your background you could turn your love for Pilates into a new and rewarding career

Non-qualified Pilates enthusiasts

- Train as a fully certified STOTT PILATES® matwork instructor
- Full support every step of the way

Qualified fitness & health professionals

- Train as a fully certified STOTT PILATES matwork or reformer instructor
- Qualification at Level 3 through CYQ (optional)
- Earn 16 REPs points per course

STOTT PILATES®
merithewcorporation

0800 434 6110
www.activetraining.info

*Registered trademark of Merithew Corporation, used under license. STOTT PILATES® photography © Merithew Corporation.

L3 Exercise Movement and Dance Teacher Qualification

Turn passion in to a career

Courses throughout the UK

Call: 01403 266000
Email: training@emdp.org
Or go online
www.emdp.org/teacher-training

emdp **Fitness League** **medau** **kta** **REP**

Loughborough COLLEGE est. 1909

Are you in the running for a career in Leisure Management?

Loughborough College offers courses in Leisure, Sport, Event and Recreation Management to help you start your career, or develop your skills and managerial expertise from an existing position in the leisure industry.

Study full time, day release, block release or by distance learning, at a variety of levels; from the ISRM Fitness Management Certificate and Higher National Diploma to full Honours Degree. The Foundation Degree and Higher Professional Diploma are fully accredited by the ISRM, and lead to use of the designatory letters M.Inst.SRM.

Recruiting now for a September 2010 start.

Visit www.loucoll.ac.uk
or call 0845 166 2950
for more information

The best personal trainers don't happen by accident

We deliberately train them that way

CALL FASTER ON
08455 19 16 15
or visit www.fasterglobal.com
if you want to learn to be the best personal trainer

Focus Training
Adding value to your staff

As an employer of fitness professionals, you'll recognise the value of investment in training them to ensure they deliver the best possible service to your membership.

Fantastic professional courses available in:

- Personal Training
- Exercise to Music
- Gym Instructor
- Step
- Studio Cycling
- Nutrition & Weight Management
- GP Exercise Referral
- And much more.

FOCUS TRAINING

Call Focus Now:
0333 9000 222
or 01204 388330

www.focus-training.com

Leisure Opportunities

training DIRECTORY

From just **£534** you can access over **23,000** motivated leisure professionals for 3 months (6 consecutive insertions). Committed to the leisure industry, they are potential students for your courses

TO ADVERTISE +44 (0)1462 471747
leisureopps@leisuremedia.com

Become a Personal Trainer
and excel with guaranteed positions for every graduate anywhere throughout the UK

We offer the most comprehensive, practical and PT-specific curriculum, preparing graduates with 15-20 hours of real life experience on-course helping launch a new career with their best foot forward

Choose EIF to start earning sooner
— fully qualified and working in just 6 weeks! Choose EIF and remove the risk from your investment — guaranteed positions for EVERY Master Trainer graduate

take action...



Train like a pro.
Start earning like a pro!
Call **0845 0944 007** and talk to our careers team today
— Now offering cashback incentives on every course throughout 2010.

*be*more

Why not take control of your HSE First Aid needs?

The Five-Day First Aid Instructor Course
Includes the PTTLS Level 3 Training Qualification

Nuco Training Ltd
08456 444 999
enquiries@nucotraining.com
www.nucotraining.com
www.nucoplus.com

"...I found the Instructor Course to be excellent and a credit to your company..."
Debbie Hull (Bishops Stortford)

FOR ALL YOUR FIRST AID NEEDS

www.leisureopportunities.co.uk

leisureopportunities
news & jobs updated daily online

YOUR 1ST CHOICE FOR RECRUITMENT & TRAINING

NEXT ISSUE:
24 AUGUST 2010
BOOK BY NOON ON
WEDS 18 AUGUST 2010

TO ADVERTISE, Contact the Leisure Opportunities team on
t: +44 (0)1462 431385
e: leisureopps@leisuremedia.com

Chronic Respiratory Disease Exercise Instructor Course

BLF bursaries are now available for the September 2010 intake of this innovative distance learning course.

Developed by Loughborough College, the University Hospitals of Leicester and the British Lung Foundation (BLF), with funding and input from Rotherham PCT, the course has been submitted for endorsement at level 4 on the Register of Exercise Professionals. It covers:

- Physiology and pathology of respiratory disease
- Management of chronic respiratory disease
- Responses to exercise and exercise prescription
- Managing breathlessness
- Referral pathways

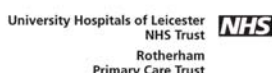
The BLF bursary, funded by Air Products, is available to exercise professionals who meet the following entry requirements:

- Level 3 or equivalent qualification as recognised by REP's
- A current valid first aid certificate
- Endorsement from a local pulmonary rehabilitation team
- 100 hours practical exercise instruction over the past year, with some experience of working with clients with COPD/respiratory disease
- Current CRB disclosure form

Instructors taking up a bursary will be expected to work with local Breathe Easy support groups to set up exercise classes within the community.

For more details or an application pack please log on to
www.lunguk.org/supporting-you/blf_active or contact
Danielle Smreczak using the details below

e: exercise@blf-uk.org
t: 0207 688 5618
w: www.lunguk.org

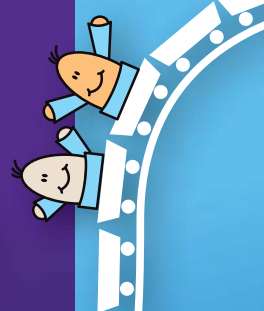


the freshest ideas and the latest lines in leisure

exhibit at



21-23 Sept 2010
NEC Birmingham



LEISURE INDUSTRY WEEK 21-23 September 2010 · NEC Birmingham

LIW provides an exclusive platform for suppliers and service providers across the Leisure Industry. Attracting over 12,500 trade visitors and boasting brand new initiatives and features for 2010, LIW offers you the perfect solution to your sales and marketing objectives.

LIW is the UK's leading and most influential trade show for out of home leisure businesses, with seven sectors each tailored to the specific needs of the communities we serve.

If you are looking to position yourself in front of senior operators from across the leisure industry, then contact Chris Brown on 020 7955 3968 or chris.brown@ubm.com for more information.



www.liw.co.uk

WHITBY LEISURE CENTRE

Assistant Manager**£22,221 - £23,708 per annum**

(This is a re-advertisement – previous applicants need not apply)

An exciting opportunity has arisen for an Assistant Manager at Whitby Leisure Centre, a wet and dry facility within the beautiful old town of Whitby set between the coast and the stunning North Yorkshire Moors.

You must have relevant experience of working in the leisure industry and hold a recognised leisure management qualification.

As well as the above qualifications we are looking for someone with excellent organisational and customer care skills including knowledge of customer focused quality systems such as QUEST.

Duties include marketing of the facility and its programme, responsibility for co-ordinating the activities and specialisms of the Duty Manager team, assisting in promoting and developing events at the facility, deputising for the manager wherever necessary. The role will involve some evening and weekend work on a rota basis. The Assistant Manager post will be subject to Criminal Records Bureau checks

If you require further information please contact Chris Storer, Centre Manager, Whitby Leisure Centre, Tel (01947) 604640.

Application packs are available from any Customer First Centre or by contacting Customer First, telephone 01723 232323 option 4, e-mail customer.first@scarborough.gov.uk or job.vacancies@scarborough.gov.uk. Vacancy details are also available from www.scarborough.gov.uk and www.oneplacenorthyorks.com

Application forms should be returned to Human Resources, Town Hall, St Nicholas Street, Scarborough, YO11 2HG in an envelope marked "Private and Confidential Application for Post TC101, Assistant Manager (WLC)."

Closing date: 12 Noon Thursday 26 August 2010

**Scarborough Borough Council**

great place to live, work & play

SHROPSHIRE FOOTBALL ASSOCIATION LIMITED

Chief Executive

Due to the impending retirement of the existing post holder, Shropshire FA Ltd are seeking to appoint a new Chief Executive with effect from November 2010. The Chief Executive will be responsible for the running of the Association; this will include legal matters, business planning, football development, football administration, marketing, public relations, personal and managerial matters.

The successful candidate will also act as Company Secretary and ensure that the Company complies with the requirements of the Companies Act and relevant employment legislation.

There is also a requirement to be responsible for the servicing of meetings of the Company's Board of Directors, Council, Standing Committees and Director's sub-committees and to implement decisions made.

To apply you need to have significant experience in an administrative or management role and be passionate and knowledgeable about grassroots football.

Based at Shropshire FA's headquarters in Shrewsbury, candidates should have experience of managing staff, producing business plans, report writing, giving presentations and have strong organisational ability coupled with IT literacy skills and the ability to influence at all levels.

A job description can be downloaded from: www.shropshirefa.com

For an informal discussion about the role please phone David Rowe at Shropshire FA 01743 362769

To apply, please send a CV and covering letter explaining why you are suitable for this role with details of your current remuneration package to David Ralphs, Chairman Shropshire Football Association, 27 Pym's Road, Wem, Shropshire, SY4 5AT or email daveralphs@tiscali.co.uk. Marked Private and Confidential.

The closing date for applications is: 3rd September 2010 Shortlisted candidates must be available for Interviews on: 27th September 2010

Shropshire FA is committed to equality of opportunity and welcomes applications from all sections of the community.

Get into Football



These are exciting opportunities to join one of the UK's largest and successful Leisure providers. Parkwood Leisure's established reputation for high quality management and customer-focused service ensures that we will continue to build on our success and increase our activities beyond the 80 sites we currently operate throughout England and Wales.

AREA MANAGER**Bexley and Dartford, London****Salary: Up to £40,000 plus benefits Ref: AM/BEX**

We have the opportunity for an innovative individual to lead our Bexley and Dartford Management teams by taking overall responsibility for the operation of four busy leisure facilities with a combined turnover in excess of £7m and a mix of indoor, outdoor, wet and dry leisure facilities. Bexley is a neighbouring borough to the Olympic Park heightening the importance of this exciting role ahead of the London 2012 Olympic Games.

We require a commercially astute, enthusiastic and self motivated Manager to lead these busy facilities, which have been subject to substantial investment and development over the past few years.

This key role will involve the management of all customer, health and safety, operational and commercial issue, whilst maintaining our ongoing excellent relations with the London Borough of Bexley Council and Dartford Borough Council and supporting their ambitions for improved leisure services. A proven track record in managing and developing sport and leisure facilities is essential.

Successful candidates should have a recognised qualification in leisure management, sports development or related subject, preferably to NVQ3 or degree level and have extensive knowledge of the leisure industry. You will also possess excellent communication and customer liaison skills and be committed to exceeding customer expectations. You should be able to demonstrate that you are a dedicated and dynamic individual and capable of meeting the demands of the centres whilst creating an energetic, innovative and responsive multi disciplined team. A proven track record in the launch of a new facility or of developing participation in activities would be advantageous.

These are an ideal opportunities for committed and enthusiastic individuals to gain real job satisfaction and develop their careers. If you believe you have the knowledge and competencies required for this position, please send a letter of application and full CV to: recruit@parkwood-leisure.co.uk or post to: Sarah Moseley, Human Resources Administrator, Little Bowbrook, Walton Road, Hartlebury, Worcestershire, DY10 4JA.

Applications By: 19th August 2010

Parkwood Leisure is an equal opportunities employer

CENTRE MANAGER

incorporating the International
Diving Centre and a new
Swimming Pool

Southend Leisure Centre,**Salary: Up to £32,000 plus benefits Ref: CM/SOUT**

The Leisure & Tennis Centre has been the flagship facility for the Southend contract for the past 12 years and has been identified as a Pre Games Training Camp for the 2012 Olympics. Southend-On-Sea Borough Council will complete a £13.5m investment in the centre by October 2010, which will see a 25-metre swimming and international pool added to the already extensive dry activities including a fitness suite, indoor and outdoor tennis courts and athletics track.

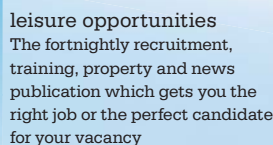
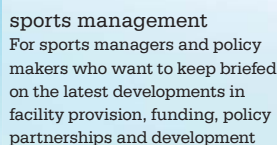
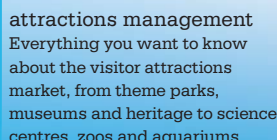
The successful candidate will be required to take overall responsibility for the effective management and operation of the Centre, ensuring that the standard of service is to the quality expected of such a prestigious facility, which will lead to increased usage, satisfy the expectations of the Council and develop commercial performance. You will have a demonstrable ability to work with International and National sporting organisations and athletes. This position is being dealt with by Parkwood Leisure.

Interviews for this position will be held on the 25th August 2010.



leisurecentre.com

Our publications feature up to the minute news, profiles, interviews and reports, plus the latest industry opinions and issues debated as they happen – in every sector of the leisure industry



Alternatively call our subline +44 (0)1462 471915 or fill out the form below and fax back to +44 (0)1462 433909

Attractions Management UK £34, EU £45, Int £65, Student £17 *Add Leisure Opportunities for £10 (UK only)	Leisure Management UK £38, EU £49, Int £69, Student £19 *Add Leisure Opportunities for £10 (UK only)	Health Club Management UK £41, EU £52, Int £73, Student £20 *Add Leisure Opportunities for £10 (UK only)	Spa Business UK £28, EU £38, Int £38, US/Canada £28 Student £18 *Add Leisure Opportunities for £10 (UK only)	Sports Management UK £27, EU £37, Int £58, Student £13 *Add Leisure Opportunities for £10 (UK only)	Leisure Opportunities Standalone subscription: UK £31 EU £41, Int £62, Student £16
------------------------------------------------------------------------------------------------------------------------------------	--------------------------------------------------------------------------------------------------------------------------------	------------------------------------------------------------------------------------------------------------------------------------	-------------------------------------------------------------------------------------------------------------------------------------------	-------------------------------------------------------------------------------------------------------------------------------	-------------------------------------------------------------------------------------------------------

☐ **Cheque** (in £ sterling – please make payable to the Leisure Media Company Limited and post to the following address: Subscriptions, The Leisure Media Company Limited, Portmill House, Portmill Lane, Hitchin, Herts SG5 1DJ)

Tel: _____ Fax: _____ Email: _____

Assistant Operations Manager

Full Time 37 hours a week, shift rota basis including some weekends based in Oxted, Surrey. Salary circa £18,000 pa.

This job requires an individual who is customer and team focused with an understanding of the leisure industry and who has an aptitude for developing our services and facilities with an attention to detail whilst upholding high standards throughout.

You will be responsible for managing a team of Duty Officers overseeing the day to day operation of our busy centre, reporting to and deputising for the Technical & Operations Manager.

NPLQ qualification is essential. You will be required to undertake training in Sports & Recreation Management at NVQ level 3/4 as well as a Pool Plant Operators course. First Aid at Work qualification is preferred but training can be given. Recruitment is subject to a satisfactory enhanced CRB check.

Closing date: Sunday 29 August 2010, interviews commencing 1 September.

Swimming Instructor

Swimming Instructor required to teach at Tandridge Leisure Centre, Oxted; UKCC Level 2/ASA Level 2 qualification essential.

We are looking for an instructor who is enthusiastic and has a passion for teaching swimming to join our friendly teaching team on the following days: Monday 4-6pm; Tuesday 4-6.30pm; Thursday 4-6.30pm; Friday 4-6pm

Start date: 6 September 2010. Rate of pay: £14.01 per hour Recruitment subject to a satisfactory enhanced CRB check.

Closing date: Tuesday 17 August 2010.



To apply please email a cover letter and your CV to Karen Hurrell, Business Support Officer, at: jobs@tandridgeleisure.co.uk.

www.tandridgeleisure.co.uk



EAST LONDON GOLF ACTIVATOR



2 year Contract for Services (c.£15,000 per annum)

In the build up to the London 2012 Olympic Games and with golf given priority as competition sport in schools, a self-employed, enthusiastic and self-motivated individual is needed to deliver the 'Golf Roots' programme in East London being promoted by the Golf Foundation on behalf of the England Golf Partnership. The Activator will coordinate and deliver an agreed programme of golf activities in schools, golf facilities and community groups, working closely with a variety of local organisations. The role will prioritise 3 boroughs in East London: Tower Hamlets, Hackney and Newham.

A sound knowledge of sports development principles and practices is essential, as is experience of sports development work within the education and/or local authority sectors. Applicants should be aware of the national initiatives promoted through the Youth Sport Trust and Sport England.

Good IT skills, experience of operating Microsoft Office, and the ability to communicate effectively in a variety of circumstances are all required. An appropriate leisure or teaching qualification is desirable. Applicants should have an interest, but not necessarily a background, in golf.

Application packs can be obtained through www.golf-foundation.org.

Completed application forms should be returned to:

The Golf Foundation, The Spinning Wheel, High Street, Hoddesdon, Herts EN11 8BP

The Golf Foundation is an equal opportunities employer. Applications from women, the disabled and ethnic minorities who have relevant experience are encouraged as these groups are currently under-represented in the organisation. Alternative formats for this advert will be made available on request.

This post is supported by



CLOSING DATE:
Friday 10th September
INTERVIEW DATE:
Tuesday 21st September

SHOPPERS A.M.U.S.E.M.E.N.T.S

The country's leading independent leisure operator, with a reputation for luxury facilities and excellent customer service, currently has the following vacancy;

ARCADE MANAGER/ESS

**SOUTH EAST - GREATER LONDON
CROYDON AREA
SALARY £25K
DEPENDENT ON EXPERIENCE**

Working in our busy city centre complex you will need proven supervisory or management experience for this demanding role, although not necessarily in the leisure industry as full training will be given. If you relish a challenge, enjoy working with the general public and have excellent communication skills then we would love to hear from you.

Please write with full career detail/CV to **Martin Scott** either to martinscott@arcadesdivision.co.uk or to the address below.

The Noble Organisation
limited



Shopper's Amusements, 71 Northend,
Croydon, Surrey CR0 1TJ.

COMMUNITY SPORTS DELIVERY MANAGER

Salary : £24,646 - £28,636 per annum

Location : Tavistock, Devon

37 hours per week, initially a two year fixed term contract starting in Autumn 2010.

We are seeking to appoint a highly motivated person to contribute to the success of our new state of the art indoor and outdoor all weather sports facilities at Tavistock Community Sports Hub by driving our aim of increasing participation in sport and related activities in the community.

Working alongside members of our Sports Partnership, the successful candidate will be responsible for delivering the aims and objectives of the Hub's development plan, and monitoring and reporting key performance targets for Sport England and the Football Foundation.

If you are someone who is passionate about sport and relishes the opportunity to deliver many exciting sports programmes in and around Tavistock, can manage a small team of Sports Centre staff and can work in partnership with the Sports Centre Manager to ensure the Community element of the project is delivered, this is a great opportunity for you.

The post will provide a challenge for an experienced and committed professional who has been successfully involved in project and resource management, marketing and promotion and has used good communication skills to develop excellent working relationships with others.

Due to the community element of the role, the post holder is required to work some weekends and evenings.

Tavistock College will be the direct employer for this post which is being funded by Sport England's Community Investment Fund. The successful applicant will be required to undertake an enhanced CRB check.

Application packs and more information are available on the college website www.tavistockcollege.devon.sch.uk

Closing date for applications : 24 August 2010



visit www.leisureopportunities.co.uk
or call **01462 471747** for more details
on the following jobs

UPDATED
DAILY

Full Time Recreation Assistant

Company: Central YMCA
Salary: £16,749 per annum
Location: London, United Kingdom
Closing date: 13 Aug 2010

Health and Wellness Advisor

Company: Balfour Beatty
Salary: £23,000 - £32,000
Location: Nationwide, United Kingdom
Closing date: 13 Aug 2010

Leisure Assistant

Company: Oakhill Academy
Salary: Competitive salary + sales bonus
Location: Whalley, Ribble Valley, UK

Apprentice Duty Officer - 2 posts

Company: University of Stirling
Salary: £19,743 - £22,236 p.a.
Location: Stirling, United Kingdom
Closing date: 16 Aug 2010

Assistant Operations Manager

Company: Tandridge Leisure Limited
Salary: circa £18,000 pa.
Location: Oxted, United Kingdom
Closing date: 29 Aug 2010

Fitness Consultants - 3 posts (term-time only)

Company: University of Liverpool
Salary: £15,719 - £18,117 pa (pro rata)
Location: Liverpool, United Kingdom
Closing date: 18 Aug 2010

Team Leader

Company: University of Liverpool
Salary: £18,643 - £21,565 pa
Location: Liverpool, United Kingdom
Closing date: 18 Aug 2010

Part Time Recreation Assistant

Company: Central YMCA
Salary: £4,466 per annum
Location: London, United Kingdom
Closing date: 20 Aug 2010

Lifeguard / Instructor - cascades

Company: Tewkesbury Borough Council
Salary: £17,161
Location: Tewkesbury, United Kingdom
Closing date: 20 Aug 2010

Swimming Manager

Company: Daventry Active Ltd
Location: Daventry, United Kingdom

Duty Manager

Company: Daventry Active Ltd
Location: Daventry, United Kingdom

Become an Exercise to Music Instructor

Company: Focus Training
Location: Nationwide, United Kingdom

GP Exercise Referral

Company: Focus Training
Location: Nationwide, United Kingdom

Become a Personal Trainer

Company: Focus Training
Location: Nationwide, United Kingdom

Become a Gym Instructor

Company: Focus Training
Location: Nationwide, United Kingdom

Fitness Trainer/ Personal Trainer

Company: Roehampton Club
Salary: OTE £25k, plus benefits
Location: London, United Kingdom

School and Community Basketball/Multi Skills Coach

Company: Spalding High School Sports College
Salary: Circa £16,000
Location: Spalding, United Kingdom
Closing date: 27 Aug 2010

ASA Level 2 Swimming Teachers

Company: Swim School North East
Location: Newcastle / Durham / Whickham / Sunderland, United Kingdom

Head Therapist

Company: Corinthia
Salary: Competitive
Location: London, United Kingdom

Personal Trainers

Company: Fitworks
Salary: Potential salary of £20-£30k
Location: Bristol, United Kingdom
Closing date: 15 Sep 2010

Become an Advanced Youth Trainer

Company: SHOKK Limited
Location: Nationwide, United Kingdom
Closing date: 13 Oct 2010

Trainee Personal Trainer / Fitness Instructor

Company: The Training Room
Salary: £20K-£30K
Location: Nationwide, United Kingdom
Closing date: 01 Mar 2011

General Managers

Company: Park Resorts
Location: Nationwide, United Kingdom
Closing date: 13 Aug 2010



Caravan Sales Manager

Company: Park Resorts
Salary: OTE of £40-100K
Location: Nationwide, United Kingdom
Closing date: 13 Aug 2010

Retail Managers (Food and Beverage)

Company: Park Resorts
Location: Nationwide, United Kingdom
Closing date: 13 Aug 2010

Blue Lagoon Manager

Company: Bluestone National Park Resort
Salary: attractive plus benefits
Location: Pembrokeshire, United Kingdom
Closing date: 20 Aug 2010

General Managers

Company: Park Resorts
Location: Nationwide, United Kingdom
Closing date: 13 Aug 2010

Caravan Sales Manager

Company: Park Resorts
Salary: OTE of £40-100K
Location: Nationwide, United Kingdom
Closing date: 13 Aug 2010

Retail Managers (Food and Beverage)

Company: Park Resorts
Location: Nationwide, United Kingdom
Closing date: 13 Aug 2010

Blue Lagoon Manager

Company: Bluestone National Park Resort
Salary: attractive plus benefits
Location: Pembrokeshire, United Kingdom
Closing date: 20 Aug 2010

Events Manager

Company: Daventry Active Ltd
Location: Daventry, United Kingdom

Beauty Therapist

Company: Berkeley Health Club and Spa
Location: London, United Kingdom

Qualifications Development Administrator (Lifesaving & First Aid)

Full-time – 35 hours per week based in Walsall
Salary – based on experience



There has never been a more exciting time to join the STA. As one of the world's largest swim teaching and lifesaving organisations, the Association continues to experience unprecedented growth and development. To support this, the STA now wishes to appoint a new Qualifications Development Administrator, who's primary technical focus will be lifesaving / lifeguarding and first aid, so an understanding of the STA's qualifications (or equivalent) is essential.

The successful candidate will also have good communication and problem solving skills, and the ability to work flexibly to meet the needs of the organisation.

To apply, please email your application and CV to sta@sta.co.uk.

Closing Date will be 31st August 2010

Full & Part Time Fitness Instructors required for 2 exclusive London Sites.

Applicants must have prior experience and be qualified to Reps Level 2. First Aid & Class Instructor qualifications would be advantageous. We are looking to recruit motivated individuals who are able to use their own initiative and genuinely care about helping our members achieve their goals.

Salary - £14,500+

Please apply with CV and covering letter to:

careers@nealtraining.com
or alternatively by post to
Neal Training Ltd Careers,
PO BOX 894 Beaconsfield,
Buckinghamshire HP9 1ZR.



Rivers Health and Fitness are looking to recruit a **Health and Fitness Manager** for our standalone private members club situated by the River Thames in Reading.

The club is looking for an individual with strong operational and sales & marketing experience from within the health and fitness industry. We require a self motivated person who can work alone and as part of a team, to drive forward membership sales as well as develop and improve the current operating procedures. As well as the required gym qualifications, a pool plant qualification or experience working with wet areas is preferred.

The successful candidate will have sole responsibility for managing their department and the gym team, and will be required to work evenings and weekends when required as part of the shift rota.

Please email your CV and a covering letter to Adam Bodimeade, General Manager at: rivers@ibisclub.co.uk www.ibisclub.co.uk

BRYANSTON SCHOOL • BLANDFORD • DORSET DT11 0PX

BRYANSTON

Fitness Leader

We are looking for a talented and enthusiastic Fitness Leader to join our existing team of staff, working with pupils, staff and visitors to the School's Sports Centre. This is a year round appointment, working an average of 40 hours per week according to a 4-week rolling rota.

Applicants will either hold a relevant industry qualification and/or a current National Pool Lifeguard Qualification and will ideally have some previous experience of writing fitness programmes, conducting fitness testing and working with young adults. Opportunity will be given for further training.

Further details may be obtained from our web site or from the Personnel Department 01258 484602 personnel@bryanston.co.uk
Closing date for applications: Thursday, 19 August 2010

HMC Co-educational Boarding and Day, 13-18

Set in over 400 acres of beautiful North Dorset countryside
Tel: 01258 452411 www.bryanston.co.uk



leisure opportunities joblink

Book a joblink with us and we'll put your logo and company name on every page of the Leisure Opportunities website www.leisureopportunities.co.uk

This advert will have a hyperlink to your website, where you can list all the job vacancies in your company.



Go to www.leisureopportunities.co.uk
and click on the link to see the latest jobs from...



TO BOOK Call: +44 1462 471747
and start getting applications for your jobs IMMEDIATELY!



Health and Fitness Club for Women Peterborough

Due to our continued success we are looking for an:

ASSISTANT MANAGER

If you are -

- Enthusiastic
- Committed to success
- Looking for a new challenge
- Self motivated
- Experienced in sales
- Committed to EXCELLENT customer service

Then we want to hear from you today.

Post your CV for the attention of
Dan Udall (Area Manager) to: The Fitness Zone,
Wentworth Street, Peterborough
Cambridgeshire PE1 1DH
or email it to fzregate@btinternet.com
or fax it to 01737 226076

Entries close on: 31st August 2010

news & jobs at www.leisureopportunities.co.uk

Green light for £4.5bn Wirral Waters development

Major regeneration scheme designed to transform Birkenhead's former docks into new waterside destination

By **Pete Hayman**

Wirral Council has approved plans for a major £4.5bn regeneration scheme – Wirral Waters, which aims to turn Birkenhead Docks into a new waterside destination.

Manchester-based developer Peel Holdings is leading the project, which is one of the largest planning applications in the UK and covers 18 million sq ft (1.7 million sq m) of land on the banks of the River Mersey.

Individual architects have worked on different parts of

the scheme, including Glenn Howells Architects, Broadway-Malyan, Skidmore, Owings and Merrill, Allford Hall Monaghan Morris and HKR.

Restaurants, cafés, bars, a hotel and cultural attractions will aim to revitalise the former docks area, as well as helping to boost the economies of the Wirral peninsula and Liverpool.

Wirral Council leader Jeff Green said: "We can now look forward to the site's transformation over the coming years to help improve the economic fortunes of the borough."



The landmark project will include a hotel and a cultural attraction

Boris Johnson launches London cycle hire scheme

By **Tom Walker**

London mayor Boris Johnson has unveiled the capital's new Barclays Cycle Hire scheme, which forms part of wider plans to increase the number of Londoners taking up cycling.

More than 300 docking stations have been placed every 300m (984ft) apart across the city, with 5,000 bicycles for hire. More than 12,000 have already signed up as members.



Barclays is backing the scheme

However, non-members will not be able to hire a bike for at least a month while usage patterns are monitored.

Transport for London commissioner Peter Hendy said: "We expect this scheme to generate up to 40,000 new cycle journeys every day in London as the capital's cycle revolution rolls on."

"Building on the experience of other world cities who have launched similar schemes, we and our operator, Serco, will use the first month of operation to see how, when and where our members use the scheme."

CCPR to change its name to SRA

The Central Council of Physical Recreation (CCPR) is set to change its name to Sport and Recreation Alliance (SRA).

According to Brigid Simmonds, CCPR chair, the name change will help the organisation communicate the views of its members and the sport and recreation community more effectively.

CONTACTS BOOK

Arts & Business +44 (0)20 7378 8143
www.aandb.org.uk

ALVA +44 (0)20 7222 1728
www.alva.org.uk

Arts Council +44 (0)20 7333 0100
www.artscouncil.org.uk

ASVA +44 (0)1786 475152
www.asva.co.uk

BALPPA +44 (0)20 7403 4455
www.balppa.org

BHA +44 (0)845 880 7744
www.bha-online.org.uk

BICM +44 (0)845 217 1811
www.bicm.co.uk

BiSL +44 (0)20 8780 2377
www.bisl.org

CCPR +44 (0)20 7976 3900
www.ccpr.org.uk

CMAE +44 (0)1334 460 850
www.cmaeurope.org

Countryside Agency +44 (0)1242 521381
www.countryside.gov.uk

CPRE +44 (0)20 7981 2800
www.cpre.org.uk

English Heritage +44 (0)870 333 1181
www.english-heritage.org.uk

FSPA +44 (0)2476 414999
www.sportsandplay.com

FIA +44 (0)20 7420 8560
www.fia.org.uk

HHA +44 (0)20 7259 5688
www.hha.org.uk

IAAPA +1 703 836 4800
www.iaapa.org

IEAP +44 (0)1403 265 988
www.ieap.co.uk

Institute of Hospitality
+44 (0)20 8661 4900
www.instituteofhospitality.org.uk

ISPAL +44 (0)845 603 8734
www.ispal.org.uk

LPF +44 (0)1462 471932
www.leisureprop.com

LMCA +44 (0)1278 436910
www.lmca.info

MLA +44 (0)20 7273 1444
www.mla.gov.uk

NPFA +44 (0)20 7833 5360
www.playing-fields.com

People 1st +44 (0)870 060 2550
www.people1st.co.uk

REPs +44 (0)20 8686 6464
www.exerciseregister.org

SAPCA +44 (0)24 7641 6316
www.sapca.org.uk

Sports Aid +44 (0)20 7273 1975
www.sportsaid.org.uk

Sport England +44 (0)8458 508 508
www.sportengland.org

Springboard +44 (0)20 7497 8654
www.springboarduk.org.uk

SkillsActive +44 (0)20 7632 2000
www.skillsactive.com

Tourism Management Institute
+44 (0)1926 641506
www.tmi.org.uk

Tourism Society +44 (0)20 8661 4636
www.tourismsociety.org

VisitBritain +44 (0)20 7578 1000
www.visitbritain.com

World Leisure +1 250 497 6578
www.worldleisure.org