

leisureopportunities

19 APRIL - 2 MAY 2011 ISSUE 552

Daily news & jobs: www.leisureopportunities.co.uk

easyGym acquires Virgin sites

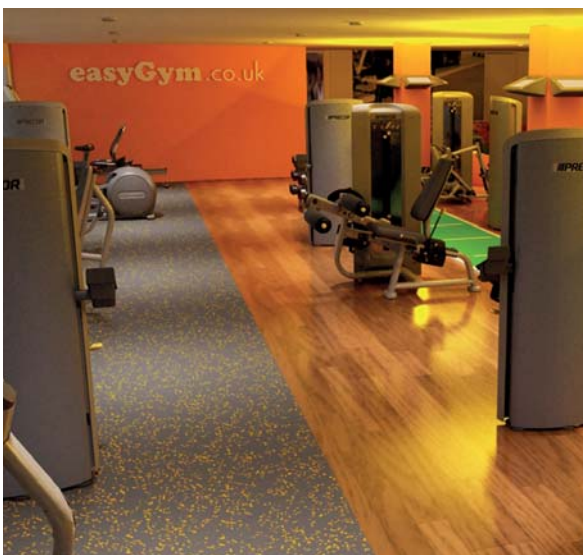
TOM WALKER

easyGym, the new budget club concept from easyJet founder Sir Stelios Haji-Ioannou, will officially open for business this summer after signing a deal with Virgin Active.

The new health club operator is to take on two locations – in Slough and Wood Green, London – and aims to open ten clubs a year from 2012, in addition to other properties earmarked for 2011.

easyGym is the first fitness brand to be launched by the serial entrepreneur, who signed a licensing deal with private-equity backed Fore Fitness to develop the brand. Fore Fitness will introduce memberships starting from £15 per month across the easyGym estate.

Paul Lorimer-Wing, joint chief executive officer of easyGym, said: "We've worked closely



easyGym is to open this summer following its deal with Virgin Active

with some of the best brains in the business to develop a proposition which we are confident will make us a leading player in the European market in the coming years."



The NISV site has been identified for the project

FAW reveals National Football Centre plans

PETE HAYMAN

A purpose-built training facility is to be built at the Newport International Sports Village (NISV) under plans unveiled by the Football Association of Wales (FAW).

Working with the Welsh Football Trust (WFT) and Newport City Council, the FAW has earmarked a location at the NISV's National Velodrome for the scheme.

It would provide dedicated facility for all FAW and WFT's representative squads; a Centre of Excellence for coach education and sports science; and education space.

Martin Barratt steps down as BALPPA CEO

TOM WALKER

Martin Barratt has left his post as CEO of the British Association of Leisure Parks, Piers and Attractions (BALPPA) after less than a year.

In a short statement, BALPPA announced that Barratt had left "in order to pursue personal interests".

BALPPA chair Adrian Mahon said: "We would like to thank Martin for his contribution to BALPPA and wish him well. We will begin the process of finding his successor immediately."

Barratt succeeded the retiring Colin Dawson in May 2010.

'Big Society' boost for Stonehenge

PETE HAYMAN

Tourism minister John Penrose has revealed that proposals to improve the visitor experience at Stonehenge, Wiltshire, have been put back on track with government support.

A package that includes private philanthropy, National Lottery cash and commercial backing is to be complemented with plans to enable English Heritage to access its reserves.

Penrose confirmed that English Heritage can access £2m from its historic reserves – raised from philanthropic sources. Meanwhile, around £3.5m has been allocated by roads minister Mike Penning to allow the Highways Agency to improve surrounding roads.



IMAGE: ENGLISH HERITAGE

The announcement has put the plans back on course

John Penrose said: "The fact that we have now almost secured private funding is an example of the Big Society in action, with everyone working together to ensure a mix of funding solutions."

**GET
LEISURE
OPPS**

Magazine sign up at
leisureopportunities.co.uk/subs

Job board live job updates
leisureopportunities.co.uk

PDF for iPad, Kindle & smart phone
leisureopportunities.co.uk/pdf

Ezine sign up for weekly updates,
leisureopportunities.co.uk/ezine

Online on digital turning pages
leisureopportunities.co.uk/digital

Instant sign up for instant alerts,
leisureopportunities.co.uk/instant

Twitter follow us:
[@leisureopps](https://twitter.com/leisureopps) [@leisureoppsjobs](https://twitter.com/leisureoppsjobs)

RSS sign up for job & news feeds
leisureopportunities.co.uk/rss

The Leisure Media Company
Portmill House, Portmill Lane,
Hitchin, Herts SG5 1DJ, UK
Tel: +44 (0)1462 431385
Fax: +44 (0)1462 433909
e-mail: please use contacts'
fullname@leisuremedia.com

Subscriptions

Denise Gildea 01462 471930
subs@leisuremedia.com

Editor

Liz Terry 01462 431385

Managing Editor

Tom Walker 01462 471934

Journalists

Pete Hayman 01462 471938

Martin Nash 01462 471933

Design

Ed Gallagher 01905 20198

Internet

Dean Fox 01462 471900

Tim Nash 01462 471917

Sales Team Manager

Annie Lovell 01462 471901

Account Managers

Recruitment, training, tenders
Paul Thorman 01462 471904

Simon Hinksman 01462 471905

Emma Matthews 01462 471907

Sarah Gibbs 01462 471908

Property desk

Simon Hinksman 01462 471905

Spa Opportunities

Emma Matthews 01462 471907

Financial Controller

Sue Davis 01395 519398

Financial Administrator

Denise Gildea 01462 471930

Circulation Manager

Michael Emmerson 01462 471932

Subscribe to Leisure Opportunities,

Online: www.leisuresubs.com

Email: subs@leisuremedia.com

Tel: +44 (0)1462 471913

Annual subscription rates are UK £31,

Europe £41, Rest of world £62, students UK £16.

Leisure Opportunities is published fortnightly by The Leisure Media Company Limited, Portmill House, Portmill Lane, Hitchin, Herts SG5 1DJ, UK and is distributed in the USA by SPP, 75 Aberdeen Road, Emigsville, PA 17318-0437. Periodicals postage paid @ Manchester, PA POSTMASTER Send US address changes to Leisure Opportunities, c/o PO Box 437, Emigsville, PA 17318-0437. The views expressed in print are those of the author and do not necessarily represent those of the publisher The Leisure Media Company Limited. All rights reserved. No part of this publication may be reproduced, stored in a retrieval system or transmitted in any form or by means, electronic, mechanical, photocopying, recorded or otherwise without the prior permission of the copyright holder. Printed by Warners Midland plc.

©The Leisure Media Company Limited 2011

ISSN 0952/8210

SPORT

New multi-sport arena for Derby

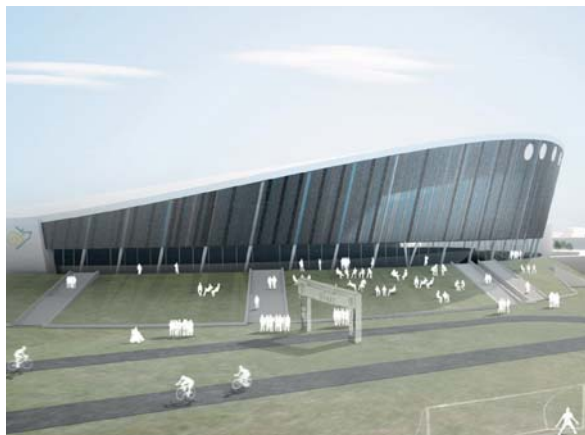
PETE HAYMAN

A park and ride car park site at Derby's Pride Park – owned by the local authority – has been earmarked for the city's new multi-sport arena.

Network Rail's Wyvern land has been identified by Derby City Council (DCC) as its second preferred site for the venue, should any issues arise with the Pride Park location.

The multi-sport arena will feature a 12-court sports hall and a 250m cycling track, while being able to be transformed into a 4,000-seat concert venue for the city.

Meanwhile, DCC has also named two preferred sites for a new 50m pool – part of the former Derbyshire Royal Infirmary site and the Riverlights sites. Talks with landowners with regards to the pool scheme remain ongoing, with DCC to make a final decision in June.



A site adjacent to Pride Park stadium has been identified for the arena

The plans include a floating floor and booms to segregate the pool, with a fun pool, a training pool and a fitness suite also earmarked.

Proposals for both schemes were backed by DCC's cabinet on 12 April, with members approving the preferred site for the arena and noting the two prospective pool locations.

British sport 'on track' for 2012 success

PETE HAYMAN

UK Sport has revealed that 20 Olympic and Paralympic sports achieved a "green" rating as preparations continue for London 2012.

The new Mission 2012 Panel said that "positive momentum" from last year has continued

into 2011, with 11 of the 27 Olympic sports securing "green" status.

A further 16 were rated "amber" and none received a "red", while half of the 18 Paralympic sports were also found to be in good health. The remaining nine were "amber".

Serco nets Sport England management deal

TOM WALKER

Sport England has confirmed it has awarded a 15-year management deal for two of Sport England's key National Sports Centres – Bisham Abbey and Lilleshall – to government services giant Serco.

The new deal is expected to allow the national governing bodies which use the centres to retain their "priority booking rights", while giving Serco a free hand to concentrate on developing commercial activities that will "underpin the future of both venues".

Keith Thomas, managing director of Serco's leisure business, said: "It's fantastic to think that we now have such a fundamental role in maintaining and improving the nation's sporting fabric."



Serco is to operate two of Sport England's key National Sports Centres

Sport England also said that Plas y Brenin, the national mountain centre in Wales, will remain under the management of the Mountain Training Trust for the next 15 years.

Rugby participation 'on the up'

PETE HAYMAN

A new study by the Centre for the International Business of Sport (CIBS) has reported that global rugby union participation is up nearly a fifth since the 2007 World Cup.

Mastercard commissioned the research, which found that participation in Africa alone had grown by 33 per cent when compared with figures four years ago.

South America and Europe (both 22 per cent) have also reported significant increases, as well as Asia – where participation levels have increased by 18 per cent.

The research uncovered three main factors that have contributed towards the growing uptake of rugby union, including Rugby Sevens' inclusion in the Olympics from 2016.

Event hosting strategies that are linked to International Rugby Board (IRB) legacy



Rugby participation has grown in the past four years across the world

schemes and a £153m investment by the governing body in 2009-12 has also been credited.

IRB chair Bernard Lapasset said: "This report, commissioned by MasterCard, underlines that growth is not just continuing, but is accelerating and is as prominent in emerging markets as traditional rugby countries."

Green light for Castleford Tigers stadium

PETE HAYMAN

Castleford Tigers rugby league club has been awarded detailed planning permission for a new 13,300-capacity stadium at Glasshoughton.

Wakefield Council's planning committee approved the project, which has been designed by Leeds-based Ramsden and Partners architects and aims to secure the club's Super League status.

The club has also recently signed a deal with Opus Land (North) and Palmer Capital to sell its current Wheldon Road venue for redevelopment.

Castleford Tigers chief executive Richard Wright said: "The delivery of the new stadium will act as a catalyst for further development of the Glasshoughton site.



Ramsden and Partners are behind the design of the Tigers' new stadium

"Opus Land (North) Ltd and Palmer Capital will fully fund the new stadium construction immediately once planning permission has been granted for the current site."

ICC confirms 2015 Cricket World Cup format

PETE HAYMAN

The International Cricket Council (ICC) has revealed that the 2015 Cricket World Cup is to comprise just its 10 Full Member nations.

A meeting of the ICC's executive board in Mumbai, India, confirmed its previous

decision – made in October 2010 – to reduce the size of the competition.

The announcement, however, will mean that associate members such as Ireland and Holland will not have the opportunity to compete, having done so in the previous two events.

Abacus completes Edgbaston installation

PETE HAYMAN

Abacus Lighting has announced that it has completed work on a £1m contract to install new floodlights at Edgbaston Cricket Ground, Birmingham.

The project forms part of a £30m overhaul of the venue, which is being carried out by Warwickshire County Cricket Club to enhance its international capabilities.

Five bespoke cantilever masts containing 320 Challenger 3 floodlights have been installed at Edgbaston, which meet England and Wales Cricket Board regulations.



ISG has been appointed to build the new facility

Godalming Leisure Centre proposals approved

PETE HAYMAN

Plans for the construction of a new leisure facility in Godalming, Surrey, have been referred to the government after the £6m scheme was given the green light.

Waverley Borough Council approved the project at a meeting on 30 March, with the final decision now resting with communities secretary Eric Pickles.

The Pozzoni-designed venue will be built by ISG and will boast a 25m swimming pool and a learner pool, as well as a 60-station fitness suite and a dance studio.

Councillors adopt new Kettering facilities strategy

PETE HAYMAN

Kettering Borough Council (KBC) has formally adopted a new sports facilities strategy for 2011-21, following a meeting of its executive committee on 6 April.

More than 1,200 residents and 30 local organisations helped shape the new document in an effort to ensure that "appropriate" facilities are planned.

An "action plan" outlining facility requirements forms part of the strategy, which includes a new purpose-built venue for Kettering Olympic Gymnastics Club.

New community gym to open in Chilton

PETE HAYMAN

A new community gym in Chilton, County Durham, has opened to the public.

Chilton Community College Fitness Suite forms part of the Legacy Gym programme – a joint venture between Durham County Council (DCC) and the Changing the Physical Activity Landscape project.

Julie Tyrrie, community action officer at DCC, said: “We are extremely pleased to see the launch of another key addition to the growing number of volunteer-run gyms in the county.”



Trixter X-Bikes have been installed at the centre

Dunston Leisure Centre opens after £5.1m revamp

PETE HAYMAN

Gateshead Council has opened the new-look Dunston Leisure Centre, following a £5.1m redevelopment designed by S&P Architects and built by Willmott Dixon.

It formed part of a £36m investment by the council in improving its facilities, which included the revamp of Heworth Leisure Centre completed in late 2010.

A new 219sq m (2,357sq ft) gym and two studios have been created, which feature Trixter X-Bikes and Technogym stations, along with interactive dance mats.

Cuts force closure of Wrexham health suites

PETE HAYMAN

Health suites at the Plas Madoc and Waterworld Leisure and Activity Centres in Wrexham, North Wales, are to close on 1 May as part of local authority cutbacks.

Wrexham Council has confirmed that the sauna, whirlpool and steamroom facilities will be removed, although the gyms, pools and exercise classes will continue.

Alan Watkin, chief leisure, libraries and culture officer, said: “It is with regret that the council has decided to close this small element of the facilities.”

GLL/Nuffield Health join forces

PETE HAYMAN

Greenwich Leisure (GLL) and Nuffield Health have unveiled the formation of a strategic alliance that aims to deliver “significant benefits” to communities across the UK.

Nuffield Health has withdrawn from public leisure management services as part of the new alliance and will work with GLL to develop a “clinically-led” health improvement service.

The new arrangement will see GLL take over the operation of 15 leisure centres across four local authority partnerships from Nuffield Health – including two venues owned by the City of York Council and three Reigate and Banstead Borough Council facilities.

Three facilities in the London Borough of Kensington and Chelsea and seven in the City of Westminster are also affected.



Redhill's Donyngs Recreation Centre is one venue now to be run by GLL

GLL director of development Chris Symons said: “The agreement sees GLL consolidate its position as the leading provider of leisure services within London and the South East and builds on the company’s expansion across the Thames Valley region, following its merger with Nexus Leisure in 2010.”

Legal deal paves way for Bromley revamp

PETE HAYMAN

Work on a £5m revamp of Bromley’s Pavilion Leisure Centre, South London, is to get underway in May, after a legal agreement was signed by the local authority and the venue’s operator.

Bromley Council and leisure trust Bromley Mytime have confirmed a deal that will allow a programme of improvements to take place at the 20-year-old facility.

Savernake Property Consultants will project manage the refurbishment with the support of Archer Architects. Higgins Construction will be the main contractor.

A new 500sq m (5,382sq ft), 100-station active lifestyle gym, tenpin bowling alley and a family play centre are among the proposals.



A 100-station active lifestyle gym is proposed as part of the renovation

Council leader Stephen Carr said: “Modern leisure facilities should be at the heart of a town centre. Our partnership with Bromley Mytime will make this happen and give more recreational options for families and individuals.”

Tone secures North Somerset management contract

PETE HAYMAN

Leisure trust and social enterprise Tone has secured a contract to operate Churchill Sports Centre in North Somerset.

Tone plans to invest more than £100,000 in green measures, equipment and improvements

at the facility. North Somerset Council has also earmarked £800,000 for the project.

Plans include replacing the current pitch with an all-weather pitch and the conversion of a multi-use area into a health and fitness facility with changing area and aerobics studio.



No artificial colours, flavours or preservatives

BAGS OF PROFIT

NEW



**£3
million!**
media spend

 **Nestlé**
PROFESSIONAL

Creative Food & Beverage Solutions

Stock up now for your share of the profit!

For professional advice to grow your business, call 0800 742 842

© Reg. Trademark of Société des Produits Nestlé S.A.

Early start for West Sussex board

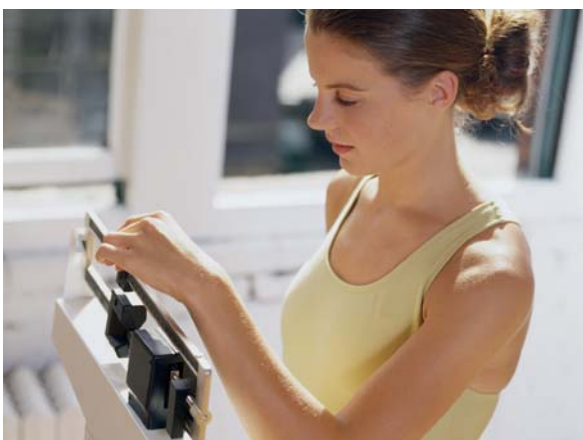
PETE HAYMAN

A new Health and Wellbeing board is to be set up a year ahead of schedule in West Sussex after the area was selected as an 'early implementer' by the government.

West Sussex County Council has been working alongside local partners to develop the plans, with the board's formal establishment due to take place in May.

Health and Wellbeing Boards form part of the planned revamp of the NHS, which is being led by the Department of Health. Boards are set to be operational UK-wide by April 2012. A 'shadow' board will guide the delivery of local health services, before its work is reviewed ahead of its formal inception next April.

Louise Goldsmith, the leader of the county council, said: "Health and wellbeing is a



West Sussex is one of the areas to be selected as an 'early implementer'

priority for the county council, and we are at the forefront of local authorities, leading the way on public health.

"Establishing the board will allow us to move further and faster on the joint working between health, social care and public health for the benefit of residents."

£8.75m Essex leisure centre plans unveiled

PETE HAYMAN

Plans for a new £8.75m leisure centre and swimming pool in Witham, Essex, have been put on show by Braintree District Council (BDC).

Scott Brownrigg Architects are behind the designs of the facility, which forms part of the local authority's bid to enhance local provision.

The new centre will include a six-lane, 25m swimming pool and a learner pool with moveable floor, as well as a fitness suite and two dance studios. A sauna and steamroom and two squash courts are also planned.

It is anticipated that a planning application will be submitted at the end of this month, which could see work start by the end of the year. Completion is scheduled for 2013.



The new facility is poised to boast a fitness suite and two dance studios

A BDC spokesperson said: "[The council] is investing more than £8.75m into the town's new sports and leisure facility as part of its commitment to ensure residents have access to sport and leisure opportunities."

Wootton Bassett leisure centre reopens

PETE HAYMAN

Parts of a leisure centre in Wootton Bassett not directly damaged by fire in December have now reopened to the public.

Wiltshire Council and operator DC Leisure have revealed that the sports hall; gym; squash

courts; and dance studio are once again available for use after the three-month closure.

Stuart Wheeler, council cabinet member for leisure, sport and culture, said: "Our property team, working with DC Leisure, has done a tremendous job in reinstating access."

Fitness4Less acquires new Cheltenham club

PETE HAYMAN

Low-cost health club operator Fitness4Less has confirmed the purchase of a Bannatyne site in Cheltenham as part of its "aggressive" expansion strategy.

The new Cheltenham location adds to recent openings in Cambridge Heath and Southwark, both in London; Newport, South Wales; and Nottingham.

A free weights area and a wide number of cardiovascular and resistance machines will be on offer at the Cheltenham facility, as well as two class studios and saunas.



Stalker has been FIA executive director since 2009

David Stalker confirmed as FIA chief executive officer

TOM WALKER

David Stalker has been officially appointed the new chief executive officer of the Fitness Industry Association (FIA).

Stalker, who has held the post of FIA's executive director since December 2009, will take over the role of CEO with immediate effect and will be responsible for the implementation of its three-year strategy.

He will also take a more strategic approach to addressing the needs of the industry in line with the public health agenda to drive growth for the sector.

'Tough' new sunbed rules for England and Wales

PETE HAYMAN

People under the age of 18 years old have been banned from using sunbeds across England and Wales under "tough" new rules, which came into effect on 8 April.

The Sunbeds (Regulations) Act 2010 – introduced as a Private Members Bill – means sunbed business operators cannot allow young people to use such facilities.

It is hoped that the new legislation will reduce the incidence of skin cancer and protect under 18s from over-exposure to ultra-violet radiation.

Your Passport to Success!

activepassport™ is a verified online record of an individual's training, volunteering, CPD, qualifications, and achievements. Unlike a standard CV, the qualifications and experience have been validated, ensuring candidates possess the right skills, training, and experience.

Over 20,000 people in the UK currently have an activepassport™, and more than 40 UK sport and leisure CEOs representing 70% of the workforce have now signed a skills protocol, committing they will work towards their employees holding and maintaining an activepassport™ as standard.

For an organisation activepassport™ can:

- Identify skill gaps in your organisation via standardised reports, so you can see if any skills are missing
- Link with existing HR systems, giving you full visibility of your employees' experience and skills
- Ensure compliance to official job role requirements, helping you match candidates to jobs quickly and efficiently
- Protect you against litigation, ensuring you are on top of training programmes and other professional obligations.

For individuals activepassport™ can:

- Provide you with a recognised online record of qualifications, personal achievements, professional achievements, training courses attended, and any voluntary work
- Create a professional CV that will be tailored to every job you apply for
- Identify training opportunities and potential career pathways
- Help you achieve your goals with its built-in 'Personal Development Planner'
- Remind you about skills and qualifications that are expiring or need updating.

For a training provider activepassport™ can:

- Give an overview of your client's skills, qualifications and competencies
- Identify missing mandatory CPD and compliance requirements
- Target individuals with specific courses, meeting your needs as highlighted in either career paths or qualifications
- Gain access to an extensive captive market, increasing sales and reducing marketing costs
- Allow you to offer your clients a powerful tool for maintaining their own records.

We are offering all Leisure Opportunities readers a **FREE demonstration**. Simply quote 'LEISURE OPPORTUNITIES' when you contact us at...

E activepassport@skillsactive.com

T 020 7632 2000

www.sportactivena.co.uk/activepassport

SkillsActiveGroup

More People, Better Skilled, Better Qualified

ATTRACTIONS & MUSEUMS

Mansfield Museum nets Guardian award

PETE HAYMAN

Mansfield Museum has held off competition from five other UK attractions to be confirmed as the winner of the Guardian Family Friendly Award 2011.

The Nottinghamshire museum has been labelled as a “surprise” winner of the award, which aims to recognise attractions that are the most welcoming to families.

Other shortlisted sites were the Corinium Museum, Cirencester; the Potteries Museum and Art Gallery, Stoke-on-Trent; and Kilmartin House Museum, Argyll.



The plan is to be implemented between 2011-16

New Lanark public consultation launches

PETE HAYMAN

Historic Scotland has launched a 13-week public consultation into its new management plan for the New Lanark World Heritage Site, South Lanarkshire.

The new document has been drafted and agreed by the historic environment agency, the New Lanark Trust and South Lanarkshire Council.

Gordon Mackie, co-ordinator of the New Lanark World Heritage Site, said the plan sets out how the site can be preserved and enhanced between 2011-2016.

Glasgow Science Centre launches new programme

TOM WALKER

Glasgow Science Centre in Scotland is to develop a new public programme and expand its corporate events operations.

The developments form part of the centre's strategy to enhance its offer and will also coincide with the Glasgow attraction's 10th anniversary celebrations.

The centre has also added three new zones to its Science Mall exhibition area this year – the 650sq m (6,997sq ft) Be Creative zone; the Alice in Wonderland exhibit and the MindWorks zone.

Loch Ness project gets green light

TOM WALKER

A landmark project that aims to improve the tourism offer at Loch Ness has been approved by The Highland Council.

Councillors approved plans for a new £2.5m visitor centre and harbour off the A82 at Brackla, which have been put forward by Jacobite Discovery and will occupy a prime site overlooking Scotland's most renowned stretch of water.

The Jacobite Discovery Project has been designed by Cameron Webster Architects and will include a visitor centre and a ticket office, as well an “extension” of Inverness-based Jacobite Cruises.

It will also act as new headquarters for the company's cruise business, which welcomes around 150,000 customers a year. The business operates out of offices and harbours at Tomnahurich Bridge and Clansman Hotel.



The proposed visitor centre will also act as new company headquarters

Jacobite director Rod Michie said: “We've involved the public at all stages of the design process and worked hard to ensure this facility enhances the visitor experience.

There is no doubt this region can make much more of Loch Ness by offering higher quality facilities and improved service.”

New visitor centre planned for Snowdonia

PETE HAYMAN

Plans for a visitor facility on the site of the Ogwen Warden Centre – between Bethesda and Capel Curig, North Wales – have been unveiled.

Anglesey-based architects Dewis have drawn up designs for the centre, which will sit at the “gateway” to Cwm Idwal in Snowdonia National Park.

The project is being fronted by the Cwm Idwal Partnership – including Snowdonia National Park Authority (SNPA), the National Trust and the Countryside Council

for Wales. Facilities will include office space for site managers and enterprises; an interpretation area and a refreshments outlet.

SNPA director of land management Emyr Williams said: “The old facilities here are not



Anglesey-based architects Dewis have designed the new visitor centre

fit for purpose and don't meet the expectations of today's visitor. Through this initiative, our intention is to create an attractive gateway to Snowdonia, which will improve people's understanding and enjoyment of Cwm Idwal.”

Welsh heritage sites to end free entry scheme

PETE HAYMAN

A scheme allowing Welsh residents aged under 16 or over 60 to apply for free entry to heritage attractions run by Cadw is to be ended.

Welsh heritage minister Alun Ffred Jones said the initiative had ‘not wholly’ met its aims

and that policy will now be to focus on increasing the number of disabled visitors and those from ‘under-represented’ groups.

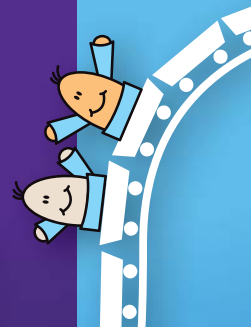
Jones said a community events programme and ‘learning festivals’ would be expanded, along with the introduction of ‘Open Days’.

the freshest ideas and the latest lines in leisure

exhibit at



20-22 Sept 2011
NEC Birmingham



LEISURE INDUSTRY WEEK 20-22 September 2011 · NEC Birmingham

LIW provides an exclusive platform for suppliers and service providers across the Leisure Industry. Attracting 9580* trade visitors and boasting brand new initiatives and features for 2011, LIW offers you the perfect solution to your sales and marketing objectives.

LIW is the UK's leading and most influential trade show for out of home leisure businesses, with seven sectors each tailored to the specific needs of the communities we serve.

If you are looking to position yourself in front of senior operators from across the leisure industry, then contact Donna Oliver on 020 7955 3979 or donna.oliver@ubm.com for more information.



*ABC audited

www.liw.co.uk

It's not what you know, but...



PHILIPPE ROSSITER is chief executive of the Institute of Hospitality

When confronted by frequent headlines depicting the grim fact that unemployment seems to be rising inexorably – to in excess of 2.6 million according to the British Chambers of Commerce – one could be forgiven for believing that opportunities are virtually non-existent. The irony is that, at the same time, there are an estimated 1.5 million vacancies in the country! Even the least numerate person can see that these figures do not seem to match. Yet, managing the job market is not that simple.

A lack of skills, especially in supervisory and management roles, remains a problem for many employers, and this is an area felt keenly by many businesses in the hospitality industry. Indeed, most predictions arising from People 1st, the sector skills council, continue to highlight the lack of management and leadership skills as a critical weakness in the industry. Against the backdrop of rising unemployment, this produces another irony in that many who now find themselves out of work from other sectors possess these skills, which could be deployed to good use in the hospitality industry.

A recent article in London's *Evening Standard* commented that only a third of vacancies are ever advertised at Job Centres, so it is hardly surprising that finding the right kind of work can be difficult. This was reinforced in a report on job-seeking practices from the Department of Work and Pensions, which revealed how important networking is for those looking for work.

With the increased impact of social media, networking has become far easier. While many industry organisations, like the Institute of Hospitality, possess vibrant networks, they can be perceived as difficult to access from the 'outside'. The more sophisticated social networks which now exist have, however, changed this landscape, allowing people to connect with each other across sectors, creating opportunities through 'hearing from someone who works there'.

Life evolves, but some things seem to remain immutable, for there is little doubt that, to get on in life, it is often a case of not 'what you know', but 'who you know'!

HOTELS

New pod hotel for Birmingham

PETE HAYMAN

Bloc Hotels has launched its new hotel concept with a 73-bedroom property in the centre of Birmingham.

Bryant Priest Newman worked on the design of the four-storey Jewellery Quarter hotel, which is inspired by Japanese pod-style properties and aims to withdraw "all unnecessary space".

Boxbuild has worked in association with the hotel operator in order to produce the pod-style rooms, which feature sound insulation and noise reduction materials.

Bloc Hotels is privately-funded by Monaco-based investors. Marketing and operations director Olivier Delaunoy, says: "Our whole approach to the Bloc concept is focused on simplicity, yet with quality at its heart. Our research shows that guests don't want space



Bloc Hotels has opened a 73-room property in the heart of Birmingham

consuming, unnecessary extras in their rooms – they want high levels of comfort and premium quality finishes at a reasonable price.

"We're aiming to lead the way with the ultimate hotel experience and we want to completely change the way that people think about staying in the heart of European cities."

Cadogan Estate secures £15.4m hotel purchase

PETE HAYMAN

London's Cadogan Hotel has been returned to the Cadogan Estate after being bought from Trinity Hotel Investors for £15.4m.

The 65-room Sloane Street hotel was once the home of actress Lillie Langtry and boasts a

restaurant bearing her name. The property also offers meeting and private dining rooms.

Hugh Seaborn, chief executive of the Cadogan Estate, said: "In due course, [the hotel] will be upgraded so as to better reflect the elegance of Sloane Street."

Travelodge plans major London expansion

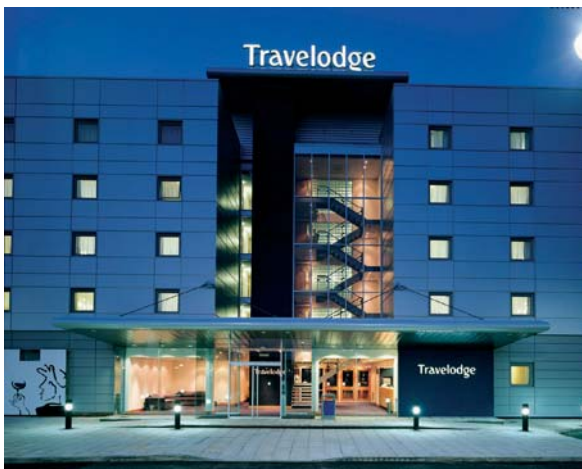
TOM WALKER

No frills hotel operator Travelodge is to invest a further £60m in expanding its portfolio in London.

The company launched its latest property today in late March – a 99-bedroom hotel in Ealing, West London.

The opening is part of the company's strategy of having 50 hotels and 7,000 rooms in London by the start of the 2012 Olympic Games. Travelodge currently has 466 hotels and 32,477 rooms across the UK, Ireland and Spain.

Travelodge chief executive Guy Parsons said: "Nothing better demonstrates the evolution of Travelodge from our road side origins than becoming the biggest hotel brand in London.



The budget hotel group is planning a major expansion into the capital

"The five-star and boutique hotels have a role to play but a strong budget hotel market ensures we can welcome the world with high quality low priced accommodation."

Spa details revealed for The Cube

PETE HAYMAN

Sanguine Hospitality has announced details of the new luxury spa that will form part of The Cube - a £13m flagship scheme in Birmingham.

The group has now released further information about the proposed Club and Spa, which is to be located on the fifth floor of the building.

An advanced inhalation room - one of only a few to be installed in the UK - is proposed as part of The Cube's Club and Spa, which can be effective for those who suffer from breathing difficulties.

The venue will also boast a Kelo sauna; a dry flotation bed; a couples suite with hot tub and relaxation areas; a hydrotherapy pool; and a rasul mud room. Pevonia products will be offered by the Club and Spa, which will also feature a climbing wall across two levels.



The Cube's Club and Spa is to incorporate an advanced inhalation room

Richard Dakin and Nicola Williams have been named as general manager and spa manager respectively, with the Club and Spa due to launch in September. It will complement a 52-bedroom Indigo Hotel on floors 23 and 24, and a 1,319sq m (14,198sq ft) Marco Pierre White restaurant on the 25th floor.

Public spa opens at Lancashire facility

TOM WALKER

The newly expanded Inside Spa at the Pendle Wavelengths leisure centre in Nelson, Lancashire, has opened.

The £220,000 renovation was funded and completed as the result of a partnership between Pendle Leisure Trust (PLT) and Alliance Leisure.

Revamp work included the addition of four new treatment rooms, a manicure and pedicure bar in the reception area and a large relaxation area for group bookings.

Existing facilities at the spa include a sauna and heat therapy and salt inhalation rooms. The work was part of a wider £3m redevelopment of Pendle Wavelengths, which was one of the UK's first public sector spas when it opened in 2007.



The refurbishment was led by Pendle Leisure Trust and Alliance Leisure

PLT CEO Phil Storey said: "The spa is now in its fourth year and the demand is incredible. Between 2008 and 2010, we tracked a 30 per cent increase in spend within our facilities.

Kyricos leaves Starwood for Core Performance

TOM WALKER

Mia Kyricos, director of global spa brands at Starwood, has left the company to join proactive wellness experts Core Performance.

Kyricos has been appointed Core's vice president of corporate wellness and will be

responsible for the implementation and success of wellness centres and related programming at a host of Fortune 500 companies.

Core Performance is backed by Polaris Ventures - a venture firm managing more than £2.1bn worth of investments.

Copthorne Hotel Merry Hill unveils new spa facilities

PETE HAYMAN

Copthorne Hotel Merry Hill in Dudley, West Midlands, has officially unveiled Imagine Spa - a new day facility comprising three beauty treatment rooms.

It is the third hotel spa to open under the Imagine Essential Collection, which provides a full range of treatments and massages, as well as a men's spa.

In addition to the Dudley spa, Imagine Essential Collection comprises facilities at Hethersett near Norwich and Brands Hatch near Dartford, Kent.



Payne was previously a spa industry consultant

Greg Payne joins Amanresorts International

TOM WALKER

Greg Payne has been appointed the new spa operations director at Singapore-based luxury hotel group Amanresorts International. Payne replaces Heather Blankinship in the role, who has left the company to set up her own spa consultancy.

Before joining Aman, Payne most recently worked as a consultant for the international hotel and spa industry and earlier this year completed the launch of a wellness center called Verita in Singapore.

BISA cancels 2011 International Conference

TOM WALKER

The British International Spa Association (BISA) has cancelled its annual BISA International Conference event, due to be taking place in Buxton on 23-24 June.

In a letter to its members, BISA chair Marion Schneider cited the emergence of "significant obstacles" to holding the event, but no further details were offered.

In its place, University of Derby is now organising its own event - called Buxton Spa Forum - with a focus on "spa responsibility and sustainability".



FitnessBooker is the leading web-based software for all sizes of health club and gym. FitnessBooker will help you increase your average transaction, drive membership, and help your business get healthier and more profitable. Check out FitnessBooker at our website, or call today, and find out how your business could benefit from:



- Membership Management
- Real-Time Online Class Booking
- Sell Membership, PT and Everything Online
- Social Media & Email Marketing
- Integrated Point-of-Sale
- Anywhere, Anytime Access Including Via Mobile Phone
- Integrated Spa Management if Required

FitnessBooker helps businesses all over the world to fulfill their potential.

www.fitness-booker.com

Mayor unveils new 'super agency'

TOM WALKER

London mayor Boris Johnson has announced the launch of London and Partners – a new “super agency” that will bring together Visit London, Think London and Study London to promote the capital.

Dame Judith Mayhew Jonas, chair of the New West End Company, has been named as the interim chair with Danny Lopez appointed as interim CEO. Other members of the London and Partners board include ExCeL chief executive officer Kevin Murphy and Grant Hearn, chief executive officer at budget hotel chain Travelodge.

The new flagship agency – a non-profit public private partnership – will be responsible for encouraging leisure and business visitors to the capital, along with attracting inward investment and promoting business growth.



London and Partners will be responsible for encouraging more tourists

Johnson said: “London is an extraordinary place of opportunity and without doubt the best big city to visit, study and invest in.

“We have an incredible story to tell and by harnessing our resources under one roof I believe we can become an even stronger magnet for tourists, students and investors.”

No government cash for Scilly ferry project

PETE HAYMAN

Plans for a new ferry link between Cornwall and the Isles of Scilly will not receive government funding towards the scheme.

The Route Partnership is leading the project and comprises Cornwall Council and the

Council for the Isles of Scilly, as well as the Duchy of Cornwall.

Around 45,000 passengers use the service each year and the partnership has already reduced the cost of the scheme by £25m, with Cornwall Council borrowing an extra £5m.

Deloitte reveals growth opportunities

PETE HAYMAN

Deloitte has revealed that an ageing baby boomer generation and emerging middle classes in India and China are set to create new opportunities for UK tourism.

Alex Kyriakidis, global managing director of tourism, hospitality and leisure, said affluent baby boomers have “strong purchasing power” and “are used to travel”.

Speaking at the Association of British Travel Agents’ Travel Matters Conference, Kyriakidis also predicted international tourism from India and China will accelerate.

“The middle classes in the emerging markets are expanding rapidly and most of the new entrants will come from China and India,” he



Emerging middle classes from Asian markets are to boost UK tourism

said. “Despite their disposable income lagging behind that of the West, international tourism from these two source markets will accelerate over the next few years.”

Time to reduce the red tape burden



KURT JANSON

is policy director of Tourism Alliance

One of the core plans to come out of the government’s Tourism Policy is a pledge to reduce the level of regulatory burden on tourism businesses. This comes at an opportune time, as a report from the British Holiday and Home Park Association found that – in its sector – small holiday and touring park firms spent 11 per cent of their time on regulatory compliance and 5.5 per cent of turnover on advisers to assist them in this. This is an increase of 83 per cent in time and 37 per cent in cost from the last survey in 2001.

More worryingly is the fact that, although the new government came into power with a mantra of “one in, one out” on new regulation, there has been a significant increase in new regulation on the tourism sector – some of which is totally meaningless. For example, the new requirement for self-catering cottages to gain Energy Performance Certificates and to show them to customers before they book their stay.

Some rebalancing may be on the way. Tourism minister John Penrose is to launch a task force looking at regulatory burden on the sector, and recommend which regulations should be repealed or amended to reduce the burden on businesses. The Tourism Alliance has developed a report listing a large number that need to be addressed, which will form the basis for the task force’s activities.

The government has also opened a public debate on hospitality and tourism regulation that needs to be removed or amended. This consultation – the Red Tape Challenge – is being conducted online at www.red-tapechallenge.cabinetoffice.gov.uk. The two-week consultation will gather feedback on what red tape needs to be removed to support a range of different sectors.

The consultation on hospitality and tourism will run between 6-20 May, with results feeding through to the task force for their consideration. We would therefore encourage everyone to take this chance to feed into the process and help increase to ability of UK tourism businesses to grow and provide much needed employment.

RWCMD announces name of new exhibition space

PETE HAYMAN

The Royal Welsh College of Music and Drama (RWCMD), Cardiff, has said that its new gallery – part of a £22.5m revamp – will be called the Linbury Gallery.

It comes after Lord and Lady Sainsbury of Preston Candover contributed £250,000 through the Linbury Trust as part of the RWCMD's fundraising campaign.

The RWCMD has already unveiled the new exhibition space, which was the location for the Society of British Theatre Design Exhibition until 16 April.



IMAGE: PIT-YACHER

Works by de Zurbarán are to remain at the castle

£15m secures artworks for Auckland Castle

PETE HAYMAN

Efforts to establish Auckland Castle, Bishop Auckland, as a “leading” heritage site for the North East have been boosted with a £15m donation from Jonathan Ruffer.

The Church Commissioners are continuing talks with Durham County Council, the National Trust and the government about the wider future of the historic site.

Discussions also include the Art Fund and the National Gallery, although Ruffer's donation will ensure works by Francisco de Zurbarán will remain at the castle.

SAC moves forward with Ayr theatre relaunch plans

PETE HAYMAN

South Ayrshire Council (SAC) has pushed forward with plans to reopen the Gaiety Theatre in Ayr, following the appointment of a design team for the scheme.

McLennan Partnership will be responsible for drawing up plans to develop the café/bar and box office facilities at the venue as part of a £500,000 refurbishment.

It is hoped the café/bar and box office areas will open by September, with work to bring forward the opening of the rest of the theatre to start once funding is in place.

Art Fund to increase funding

PETE HAYMAN

The Art Fund has announced plans to increase its support towards museums and galleries by more than 50 per cent over the next three years.

In light of financial pressures facing institutions, the organisation has said that it will be committing £7m each year to its funding programme – up from £4.5m.

A new project to provide ‘special access’ to art across the country – the National Art Pass – is also to be launched by the Art Fund to give free entry to more than 200 attractions.

Over the last five years, nearly 250 museums have shared more than £24m to help purchase important works of art, with more money to be made directly available going forward.

Other measures include more public fundraising campaigns; support for tours and



IMAGE: BRITAINVIEW/SIMON KREITZEM

The Art Fund is set to commit £7m each year to its funding programme

schemes that share art around the UK; and backing for curatorial development.

Art Fund director Stephen Deuchar said: “We must ensure that museums remain able to collect, display and interpret great works of art, for a wide public, whatever the financial pressures of the moment.”

Arts sector fears over visa points system

PETE HAYMAN

Research commissioned by London mayor Boris Johnson has revealed that 82 per cent of arts organisations have reported an increase in bureaucracy and administration due to the current points-based visa system.

Nearly two-thirds (64 per cent) have seen costs increase, while 63 per cent said revenue had fallen due to cancellations or alterations.

Visa requirements for non EU-artists and academics wishing to enter the UK were altered in November 2008.

Sky to support UK and Irish arts schemes

PETE HAYMAN

New arts schemes and emerging artists from across the UK and Ireland are being invited to bid for funding as part of a new funding programme unveiled by Sky.

Sky Arts Ignition will include two strands – Sky Arts Ignition Series and Sky Arts Ignition: Futures Fund.

Six arts groups will work with Sky over the next three years as part of the Sky Arts Ignition Series, with up to £200,000 available for the development of new works.

Meanwhile, the Sky Arts Ignition: Futures Fund will support five individuals with a bursary of £30,000 each to bridge the gap between school or college and becoming a working artist.



Sky has confirmed two new strands of funding to support arts in the UK

Sky chief executive Jeremy Darroch said: “We’re confident the Sky Arts Ignition Series will open up new arts projects to millions of people across the nation.”

Crawley Borough Council

Tender for 3G pitch and pavilion concession

Crawley Borough Council is inviting tenders from suitably qualified suppliers to manage the Broadfield 3G pitch and pavilion under a concession contract for a period of up to seven years, likely to commence in July 2011.

The contract involves management of the 3G pitch and pavilion including responsibilities for bookings, repairs and maintenance, marketing etc.

For more details and tender documentation contact Paul Baker on 01293 438659 or paul.baker@crawley.gov.uk

Closing date for return of completed tenders is Friday May 13.



www.crawley.gov.uk

Personal Training Service: Business Opportunity

Portobello Green Fitness Club is inviting expressions of interest and tender submissions from suitably experienced personal trainers and/or operators for the development and management of our personal training services at the Club.

Portobello Green is a run as a social enterprise by The Westway Development Trust www.westway.org to provide affordable, quality health and fitness opportunities for all members of the local community. As part of our service to members we offer Personal Training in order to broaden the range of opportunities for realising individuals health and fitness goals.

The license will carry the exclusive right to promote and provide a PT service at the Club and the exclusive right to bring in clients for training subject to agreed terms and conditions. We are looking for providers who are interested in a proper partnership with us, working together to achieve our aims and objectives.

The Club has a membership base of around 1600 and a large gym and separate free weights room, squash courts and exercise studios, all of which are available for appropriate use by the selected operator. Situated in West London and close to Notting Hill we are ideally situated for the PT market.

Further information and full details of the tender can be obtained from our website www.pgfc.org.uk, if you would like to discuss the opportunity, please contact Tamara Kissling, Club Manager on telephone 020 8962 5758 or by email tkissling@pgfc.org.uk

The closing date for submissions is 11th May 2011 with a tentative start date of July 1st 2011



The Leisure Property Forum



Membership of the Forum includes:

- Regular networking opportunities
- A full programme of leisure property related early evening seminars
- Details of forthcoming LPF events and other industry dates on our website
- Members' rates to LPF seminars and events
- Complimentary places at some events
- A free subscription to Leisure Opportunities magazine, which features regular LPF columns, tenders, for sale adverts and property news
- A 10% discount on property advertising in Leisure Opportunities magazine
- A dedicated LPF monthly email bulletin, delivered straight to your mailbox
- Access to the full listing of all our members

For more information visit www.leisurepropertyforum.org

Email: info@leisurepropertyforum.org

Tel: +44 (0)1462 471932 Fax: +44 (0)1462 433909

VAT Registration No. 844 8560 00

CULTURE & LEISURE MANAGEMENT CONTRACT



Torridge District Council intends to invite tenders for the management, marketing, maintenance and operation of its four Leisure Centres and the Burton Art Gallery & Museum.

The contract is targeted to commence on 1st January 2012 and will be for a minimum of ten years with a potential option to extend for a further five years.

Suitably experienced organisations are invited to express interest in this tender by no later than 12:00 noon on 29th April 2011 via the 'Opportunities' section at **www.supplyingthesouthwest.org.uk**

Those organisations expressing interest will be emailed a link to a pre-qualification questionnaire that must be completed and returned via the above Portal by no later than 12:00 noon on 6th May 2011.

For more information please contact Vikki Braddick - vikki.braddick@torridge.gov.uk



WTS hopes to establish a new native woodland

WTS completes Maryland Farm purchase

PETE HAYMAN

Woodland Trust Scotland (WTS) has completed the purchase of the 240-hectare (600-acre) Maryland Farm site as part of plans for a new woodland near Glasgow.

The organisation acquired the site following an 18-month fundraising campaign, which aims to provide an accessible area of woodland for Glasgow residents.

It is hoped the Lang Craigs project – the largest native creation site in the Central Scotland Green Network – will lead to a flourishing area of forest within 12 years.

New industrial heritage project to launch

PETE HAYMAN

English Heritage has confirmed that it is to launch a new project to explore how much of the country's historic industrial sites are at risk of neglect, decay or demolition.

Landowners, developers, local communities and professionals will be invited to contribute to the scheme, which will explore sites such as canals, mills and potteries.

In October, English Heritage will also publish its findings from the *Industrial Heritage at Risk* study as part of the annual launch of the *Heritage At Risk* register.

West London lock revamp plans approved

PETE HAYMAN

ISIS Waterside Regeneration has been given the green light to proceed with regeneration plans for Brentford Lock West, a 6.4 hectare (15.8-acre) development in west London.

The project will surround the Grand Union Canal and will include an overhaul of the public realm, including communal courtyards and a residential element.

Hounslow Council approved the proposals, which will see derelict buildings and vacant land transformed into a new waterside community centred on the canal.

Three shortlisted to acquire Olympic Village

PETE HAYMAN

Three private sector organisations have been shortlisted by the Olympic Delivery Authority (ODA) to draw up final bids for the acquisition and management of the 2012 Olympic Village in London.

The three bidders are Delancey and Qatari Diar; Hutchinson Whampoa; and the Wellcome Trust, with a final decision to be made by the ODA in the summer.

More than 1,400 homes; six development plots with outline planning permission; and parks, courtyards and open space are included in the Olympic Village investment opportunity.

ODA chief executive Dennis Hone said: "The Olympic Village will deliver the best of



IMAGE: ODA

Three private sector bidders are in the running to take over the village

city living all in one place with high-quality new homes joined by education and health-care facilities, new parklands, public squares and open space."

Pinewood confirms Peel approach

PETE HAYMAN

Buckinghamshire film studios Pinewood Shepperton has confirmed that it has been subject to a takeover approach from Peel Holdings.

Manchester-based Peel Holdings currently holds a 29.78 per cent in Pinewood Shepperton, although the Pinewood board said there was no guarantee that a bid would be forthcoming.

The announcement came days after a planning inquiry into Project Pinewood commenced, with the plans having been rejected by local councillors in 2009.

Project Pinewood will include the creation of a purpose-built working and living community for the creative industries and a number of iconic streetscapes from around the world.

The 44-hectare (109-acre) development proposals for Pinewood Studios also includes a



Streetscapes such as Venice's are proposed as part of Project Pinewood

multi-purpose community venue; indoor and outdoor sports facilities; a cinema; a theatre; and public open spaces.

Pinewood Studios group director of corporate affairs Andrew M Smith said: "Our proposals for Project Pinewood are even more relevant now than when originally tabled."

Cumbrian arms depot developer selected

PETE HAYMAN

Derwent Forest Developments Consortium has been named as the preferred developer to lead plans for a former arms depot at Broughton Moor, Cumbria, by Allerdale Borough Council and Cumbria County Council.

Both councils are the site's landowners and announced the decision following a marketing and public consultation process. Derwent Forest Developments Consortium held off ESH Developments, both of whom were shortlisted from an initial 12 interested groups.

Hospitality & Leisure

Specialist Property Services

Valuations, Sales, Aquisitions, Rent Reviews, Expert Witness.

Contact: Colin White
colin.white@edwardsymmons.com

London • Bristol • Leeds • Liverpool • Manchester • Plymouth • Southampton

Edward Symmons **020 7344 4500**
www.edwardsymmons.com

Rating • Planning & Site Licensing

CHARLES F. JONES & Son LLP
CHARTERED SURVEYORS

Leading Professional Advisors to the Leisure Industry for over 70 years

Charles F Jones & Son LLP
01244 328141 www.cfj.co.uk
16 Grosvenor Court Foregate Street Chester CH1 1HN

Valuations • Sales & Acquisitions

UK and international property experts covering all sectors of the leisure and hotel industry

Alan Plumb
+44 (0) 1865 269000
aplumb@savills.com
savills.co.uk/leisure

savills
savills.com

HL HUMBERTS LEISURE

specialist professional leisure property expertise

- Sales
- Planning
- Purchases
- Rent reviews
- Arbitrations
- Rating
- Lease renewals
- Expert witness
- Valuations
- Consultancy
- Viability & feasibility
- Funding

London +44 (0)20 7629 6700 South +44 (0)1962 835 960
North +44 (0)1756 799 271 South East +44 (0)1273 325 911
South West & Wales +44 (0)29 2022 6892

www.humberts-leisure.com

LEISURE PROPERTY FORUM CORPORATE MEMBERS' DIRECTORY



For membership information please contact Michael Emmerson
info@leisurepropertyforum.org

www.leisurepropertyforum.org

3D Reid
Tel: 0121 212 2221
www.3dreid.com

Alan Conisbee & Associates Ltd
Tel: 020 7700 6666

Ashurst LLP
Tel: 020 7638 1111
www.ashurst.com

BCI Design
Tel: 020 7021 0217
www.bci-design.com

Berwin Leighton Paisner
Tel: 020 7389 9494
www.blplaw.com

Brook Street des Roches LLP
Tel: 01235 836614
www.bsdr.com

CB Richard Ellis Ltd
Tel: 020 7182 2197
www.cbre.com

CgMs Consulting
Tel: 020 7583 6767
www.cgms.co.uk

Chase & Partners LLP
Tel: 020 7389 9494
www.chaseandpartners.co.uk

Christie + Co
Tel: 0113 389 1700
www.christiecorporate.com

CMS Cameron McKenna LLP
Tel: 020 7367 2195
www.cms-cmck.com

Colliers International UK plc
Tel: 020 7487 1710
www.colliers.com/uk

Collyer Bristow LLP Solicitors
Tel: 020 7470 4408
www.collyerbristow.com

Cushman & Wakefield LLP
Tel: 020 7152 5209
www.cushwake.com

Davis Coffey Lyons
Tel: 020 7299 0700
www.coffeygroup.co.uk

DKA Associates
Tel: 020 7034 5267
www.dkalp.com

DLA Piper Rudnick Gray Cary UK LLP
Tel: 020 7796 6155
www.dlapiper.com

Drivers Jonas Deloitte
Tel: 0207 3033702
www.djdeloitte.co.uk

Edward Symmons LLP
Tel: 020 7344 4500
www.edwardsymmons.com

Finers Stephens Innocent LLP
Tel: 020 7344 5312
www.fsilaw.com

Fleurets Limited
Tel: 020 7280 4700
www.fleurets.com

Gala Leisure Limited
Tel: 0115 948 5370
www.galacoral.com

Genting Casinos
Tel: 0118 939 1811
www.gentingcasinos.co.uk

Gerald Eve
Tel: 020 7333 6374
www.geraldeve.com

Grant Thornton UK LLP
Tel: 01753 781167
www.uk.gt.com

Hadfield Cawkwell Davidson Limited
Tel: 0114 266 8181
www.hcd.co.uk

Hermes Real Estate Investment Management Ltd
Tel: 020 7680 2145
www.hermes.co.uk

Indigo Planning
Tel: 020 8605 9400
www.indigoplanning.com

James A Baker
Tel: 01225 789343

Jones Lang Lasalle
Tel: 020 7399 5326
www.joneslanglasalle.co.uk

Kerry London Ltd
Tel: 020 7623 4957
www.kerrylondon.co.uk

King Sturge LLP
Tel: 020 7087 5500
www.kingsturge.com

Lawrence Graham LLP
Tel: 020 7379 0000
www.lg-legal.com

Legal & General Investment Management Holdings Ltd
Tel: 020 3124 2763
www.lgim.co.uk

Leisure Opportunities
Tel: 01462 471 905
www.leisureopportunities.co.uk

Lunson Mitchenall
www.lunson-mitchenall.co.uk

Mayer Brown Rowe & Maw LLP
Tel: 020 7782 8890
www.mayerbrownrowe.com

Merlin Entertainments
www.merlinentertainments.biz

MWB Management Services Ltd
Tel: 020 7706 2121
www.mwb.co.uk

Odeon & UCI Cinemas Ltd
Tel: 0161 455 4000
www.odeonuk.com

Olswang
Tel: 020 7067 3114
www.olswang.com

Pinders
Tel: 01908 350500
www.pinders.co.uk

Reed Smith LLP
Tel: 020 3116 3000
www.reedsmith.com

Roberts Limbrick Ltd
Tel: 03333 405500
www.robertslimbrick.com

Royal Bank of Scotland plc
Tel: 020 7672 1752
www.rbs.co.uk/corporate

RTKL-UK Ltd
Tel: 020 7306 0404
www.rtkl.com

Saturn Projects Limited
Tel: 01844 354543
www.saturnprojects.com

Savills (L&P) Ltd
Tel: 020 7409 8700
www.savills.com

Shelley Sandzer
Tel: 020 7580 3366
www.shelleysandzer.co.uk

Strutt & Parker LLP
Tel: 01722 344057

The Leisure Database Co
Tel: 020 7379 3197
www.theleisuredatabase.com

Thomas Eggar LLP
Tel: 01293 742747
www.thomaseggar.com

Tragus Group
Tel: 020 7121 6432
www.tragusgroup.com

Vizards Wyeth Solicitors and Notaries
Tel: 020 7400 9999
www.vizardswyeth.com

Willmott Dixon Construction Ltd
Tel: 01932 584700
www.willmottidixon.co.uk

X-Leisure Ltd
Tel: 020 7592 1500
www.x-leisure.co.uk

Plus there are more than 70 other companies represented by individuals.

The future of the skills debate



STEPHEN STUDD
is chief executive
of SkillsActive

On 4 May, industry leaders will come together at the House of Commons to launch the second phase of the Skills Protocol in sport and active leisure. This will be a full report by the Skills Protocol Employer Leadership Group (SPELG), outlining recommendations for the sector's growth.

The Skills Protocol launched in January 2010, with more than 50 employers pledging to back the a single qualification structure, ensure all employees have a training plan, work towards all employees holding a skills passport, and support a single vehicle for organising quality assured training.

Through the report, SPELG will encourage industry commitment to supporting its workforce, and recognise the fact that high levels of workforce skills are an indispensable part of the industry realising its potential. SkillsActive has welcomed this initiative and leadership by the sector trade associations and their members. It is essential that employers articulate a clear vision for skills needs and development to support the growth and evolution of the industry.

However, there is minimal public funding available and the government has put the emphasis on employers. The fact of the matter is, the golden era is over and we have a real fight to demonstrate the impact of the sector and influence public investment in workforce skills and development needs.

We have been identifying opportunities that can impact on the sector, such as the Growth and Innovation Fund. Part of the investment fund provides employers and government with the opportunity to make a joint investment in the skills solutions and training programmes needed for growth.

We are currently working on a submission under the 'Best Market Solutions' and 'Joint Investment Programme' strands of the fund, which if successful, will raise employer ambition for and investment in skills, developing new initiatives to increase the contribution skills make to growth. And ultimately, allow for successful implementation of the protocol.

TRAINING

Vaizey launches cultural education review

PETE HAYMAN

Culture minister Ed Vaizey has launched an independent review of cultural education in the UK, which is to be led by Classic FM managing director Darren Henley.

According to Vaizey, all young people should have the opportunity to learn about the UK's cultural, architectural and film heritage and to take part in performance and visual arts.

It follows research that found that "quality cultural education" can have a beneficial impact on the academic attainment of young people, as well as on behaviour and concentration.

Vaizey said: "Our culture brings audiences from across the world and we are particularly



IMAGE: SHUTTERSTOCK.COM/(C) ANDY DEAN PHOTOGRAPHY

Vaizey wants all young people to have a chance to take part in the arts

adept at producing world-leading performers and artists. To remain in such a strong position we need to be sure that we are giving children the best start in their cultural education."

Football training study to commence

PETE HAYMAN

Researchers at the University of Dundee are to launch a new study into the impact of intensive football training on bone growth in young players.

Members of the Glasgow Rangers Football Club youth academy will be participating in the Institute of Motion Analysis and Research research, which will use the same motion analysis used to create football video games.

The team behind the study are now seeking similarly aged youngsters who do not take part in such an intensive training and playing regime in order to compare the effects.

The research is a joint venture between the institute, Glasgow Rangers and two other centres at the University of Dundee – the Centre for Anatomy and Human Identification and the Institute of Sports and Exercise.



Research will look into the effect of intensive training in young players

Professor Rami Abboud, director of the Institute of Motion Analysis and Research, said: "Although football is a major global sport, there is a significant weakness in the scientific literature as to whether targeted exercise training and many hours of practice are actually beneficial to growing individuals."

£500,000 for Sheffield Manor Lodge plans

PETE HAYMAN

Plans to refurbish cottages and barns at Sheffield's Manor Lodge into an educational and resource hub have received £500,000.

The Heritage Lottery Fund award will also help Green Estates to implement a programme

of training and volunteering opportunities with a skills facility at the complex.

Plans include a World War Two Evacuee Experience Education Centre and exhibition spaces outlining 'Life at Manor Cottages' using former residents' experiences.

Do You Provide First Aid Training?



Want to reduce your HSE Certification costs and offer the latest QCF Level 2 EFAW and PAEDIATRIC qualifications?

Enjoy FREE and FAST training centre approval. We promise to provide the same great price per certificate no matter how large or small your order.

As an established Ofqual Awarding Body, you can have confidence in receiving the highest service.

Call 0845 121 8328 or email info@qualificationsnetwork.co.uk to find out how you can claim 10 free certificates.*

*Terms and conditions apply

Focus Training

Adding value to your staff

As an employer of fitness professionals, you'll recognise the value of investment in training them to ensure they deliver the best possible service to your membership.

Fantastic professional courses available in:

- Personal Training
- Exercise to Music
- Gym Instructor
- Step
- Studio Cycling
- Nutrition & Weight Management
- GP Exercise Referral
- And much more.



Call Focus Now:

0333 9000 222
or **01204 388330**

www.focus-training.com

Become an Instructor of HSE First Aid at Work Courses

The Five-Day First Aid Instructor Course

also includes the PTLLS Level 3 Training Qualification

"...I found the Instructor Course to be excellent and a credit to your company..."
Debbie Hull (Bishops Stortford)

Nuco Training Ltd

08456 444 999

enquiries@nucotraining.com
www.nucotraining.com
www.nucoplus.com



For all your first aid needs

Think it's too late to change your career? Think again

Postgraduate Open Evening
7 June 2011, 5pm-7pm

The Rose Bowl, Portland Gate, Leeds

To find out more visit
www.leedsmet.ac.uk/postgrad



Leeds Met offers a range of courses for people interested in sport, leisure or tourism; either as a career or for your own personal interest.

Courses include:

- MA Leisure, Sport & Culture
- MA International Tourism & Hospitality Management
- MA Cultural Tourism
- MSc International Hospitality Management
- MSc Responsible Tourism Management (Distance Learning)

Visit www.leedsmet.ac.uk/postgrad to find out more.

For more details on the following jobs
visit www.leisureopportunities.co.uk
or to advertise call +44 (0)1462 431385



Assistant Facility Managers, *Blyth Valley Arts Leisure, Blyth Sports Centre & Concordia Leisure Centre*

Visitor Services Team Leaders, *National Museums Scotland, Scotland*

Area Sales Managers, *Fitness Systems, South, Midlands & North England*

Spa Therapist, *Virgin Active, Chelsea, UK*

Area Managers, *Fitness Agents, Regional positions in Greater London, South East and the North of England*

General Manager, *Wigan Leisure & Culture Trust, Wigan, UK*

Manager and Head Coach, *The Running School, Wales, Bristol, London and Manchester, UK*

Fitness Instructor, *Newark & Sherwood District Council, Mansfield, UK*

Spa Therapist, *GL-14, Manchester, UK*

Senior / Beauty Therapist, *Cheshire Health Club & Spa, Cheshire, UK*

Leisure Club Manager, *Renard Resources, London, UK*

Spa Sales Executive, *Renard Resources, London, UK*

Assistant General Manager, *Renard Resources, London, UK*

Spa Manager, *Renard Resources, London, UK*

Spa Sales Manager, *Renard Resources, London, UK*

Membership Sales Executive, *Renard Resources, West London, UK*

General Manager, *Fusion, London, UK*

Sport Centre and Trust Facilities Manager, *Gordano School, Portishead, UK*

Recreation Assistant, *Greenwich Leisure Ltd, The Porchester Centre, City of Westminster, London, UK*

Recreation Assistant, *Greenwich Leisure Ltd, Banstead Sports Centre, Banstead., UK*

Active University Sports Project Activator, *Bucks New University, High Wycombe (and Uxbridge)*

Active University Sports Project Coordinator, *Bucks New University, High Wycombe (and Uxbridge) Campus, UK*

Club Manager, *Greenwich Leisure Ltd, Crystal Palace National Sports Centre, UK*

Events and Marketing Manager, *Anglian Water, Oakham, UK*

Assistant Manager - Sales, *Greenwich Leisure Ltd, Westminster, UK*

Administration manager, *Greenwich Leisure Ltd, City of London, UK*

Spa Manager / Assistant Manager, *Relax, London, UK*

Senior Duty Assistant, *Herts Sports Village, Hatfield, Herts, UK*

Internal Verifier, *The Training Room, Nationwide, UK*

Visitor Services Manager, *National Museums of Scotland, Scotland, UK*

Operations Manager, *Cotswold Farm Park, Cotswolds, UK*

General Manager, *Oxford Castle, Oxford, UK*

Customer Sales Advisor, *The Armoury, London, UK*

Stadium Director, *City of Salford Community Stadium, Manchester, UK*

Club, Coach and Volunteer Development Officer, *Haringey Council, London, UK*

Operations Manager, *Daventry Active Ltd, Daventry, UK*

General Manager, *Daventry Active Ltd, Daventry, UK*

CSW Sport Partnership Director, *Coventry Solihull & Warwickshire Sport (CSW Sport), Coventry, UK*

CSW Sport Workforce Development Officer, *Coventry Solihull & Warwickshire Sport (CSW Sport), Coventry, UK*

Business Development Manager, *Lifetime, Home based with travel as required, UK*

Spa Therapists, *Cameron House, Loch Lomond, Scotland, UK*

Hair Stylists, *Cameron House, Loch Lomond, Scotland, UK*

Gym Manager, *The Gym Group, Kingston, UK*

Personal Trainer, *The Gym Group, Nottingham, UK*

Sales Manager, *Virgin Active, Manchester, UK*

Lifeguard, *Virgin Active, Stockley Park (near Heathrow), / Derby, UK*

Spa Therapist, *Virgin Active, Acton, UK More>>*

Beauty Therapist, *Virgin Active, Mill Hill / Didsbury, UK*

Account Manager, *Star Trac Europe, North West, UK*

General Manager, *Gymbox, London, UK*

Regional Sales Manager, *Holmes Place, Europe*

Spa Therapists - Full time and part time, *Lime Wood, Lyndhurst, Hampshire, UK*

Football Coaches, *The Sports Factory, New Jersey, United States*

Regional Sales Manager, *Renard Resources, Europe, Worldwide*

Spa Manager, *Renard Resources, Staines, UK*

Spa Therapists, *Five Senses, Protaras, Cyprus*

Volleyball Community Development Coach, *Tower Hamlets School Sports Prtns, Tower Hamlets, UK*

General Manager (40hpw), *Nexus Community, Oxford, UK*

Part Time Experienced Fitness Trainers, *Neal Training Ltd, London, UK*

Coach Soccer with the New York Red Bulls, *Red Bulls New York, United States*

Aqua Class Instructors, *Community Swimming, Nationwide, UK*

Duty Manager, *Surrey Sports Park Ltd, Guildford, UK*

Full- and Part-Time Personal Trainers, *The Hogarth Group, London, UK*

General Manager - Porchester Centre, *Greenwich Leisure Ltd, Bayswater, UK*

Trainee Tutor, *The Training Room, Nationwide, UK*

Lead Fitness Course Tutors and Assessors, *The Training Room, Nationwide, UK*

London Development Manager, *Access Sport, London, UK*

Personal Trainers, *Kirklees Active Leisure, Huddersfield, UK*

Principal Community & Leisure Services Officer, *East Cambridgeshire D C, Ely, Cambs, UK*

Manager, *Ocean Terminal, PURE Spa, Edinburgh, UK*

Fitness Instructor, *Five Senses, Protaras, Cyprus, UK*

Spa Receptionist, *Reebok Sports Club, London, UK*

Spa Therapist, *Holiday Inn Kings Cross, Central London, UK*

Sport Assistants - Full time and Part time posts, *Northumbria University, Newcastle upon Tyne, UK*

Change4Life Co-ordinator, *YMCA London South West, London, UK*

Leisure Manager, *Impulse Leisure, Thurrock, Essex, UK*

Leisure and Activities Manager, *Celtic Manor Resort, Newport, UK*

Aesthetic Laser Technician, *Reebok Sports Club, London, UK*

ASA Level 1, Level 2 Swimming Instructors, *Community Swimming, Nationwide, UK*

Full- and Part-Time Personal Trainers, *The Hogarth Group, London, UK*

NVQ Assessor in Active Leisure & Learning, *City and Islington College, London, UK*

Attention Personal Trainers, *Club Training, Nationwide Opportunities*

Operations Manager, *Wave Leisure, Newhaven, UK*

Sports Development Officer - Health and Fitness, *Kingston College, London, UK*


Temporary b-you Co-ordinator, *Derby City Council, Derby, UK*

Temporary b-you Advisors - 5 posts, *Derby City Council, Derby, UK*

Leisure Manager, *Perins School, Alresford, Hampshire, UK*

Fitness Instructors, *Perins School, Alresford, Hampshire, UK*

Assistant Spa Manager, *Virgin Active, Acton, London, UK*



Fitness Systems Area Sales Managers

Fitness Systems have been appointed Free Motion Fitness and True Fitness USA distributors in the UK. Due to this exciting development and expansion we require Area Sales Managers for the South, Midlands and the North of England.

The ideal candidates will have a proven track record of sales of capital equipment preferably in the health & fitness industry. Highly focussed, and be able to devise and deliver a sales strategy to meet the on-going expansion plans of this organisation.

You will need to be comfortable generating your own leads whilst having an impressive range of sales skills including conducting negotiations, and presentations.

You will need to be confident, with strong interpersonal skills and good listener so you can tailor the sale package to meet the client's high expectations.

Hard working and highly target driven is a prerequisite, if this all sounds like you! we will offer an excellent basic salary plus benefits and a bonus scheme where you will be expected to earn £40,000 plus in your 1st year.

Please send your CV along with a current photo direct to Ian Thorpe: ian@fitnesssystems.co.uk
Please note only candidates who strictly meet all criteria will be contacted for this role.

www.fitnesssystems.co.uk | www.truefitness.com | www.freemotionfitness.com

EVER THOUGHT OF A CAREER IN FOOTBALL?

SCOUTS ARE OUT LOOKING FOR PEOPLE TO JOIN OUR TEAM

BE PART OF THE TEAM

- Over 40 state-of-the-art soccer centre's throughout the UK
- 'Future Leaders' management development programme
- Proven track record in career development
- The fastest growing leisure business in the UK

Send your CV to careers@goalsfootball.co.uk



goals soccer centres
www.goalsfootball.co.uk

Impulse Leisure is a Leisure Trust and we are actively seeking highly motivated, professional people to join our teams.

LEISURE MANAGER

Location: Corringham Leisure Centre, Thurrock, Essex
Circa £24,385 – max £30,130 per annum, for an exceptional candidate

(subject to successful candidate holding a current, valid First Aid at Work, Pool Plant Operators Certificate and IOSH/ISRM Health and Safety Management Certificate or higher)
(inclusive of any 2011/2012 pay award) Full-time, permanent
(hours according to operational need, with a minimum of 37 hours per week)
Relocation package may be considered.

The post requires a highly self motivated, enthusiastic, and committed individual, who can respond to the needs of the business.

Responsibilities include the planning, co-ordination, and implementation of works programmes, and to supervise overall, the operation of the centre and its staff. The successful candidate will also be responsible for the monitoring and control of the financial aspects of the centre, while developing and expanding the centre in line with the mission and values of the organisation.

Closing date for return of completed applications: Tuesday, 26th April 2011

If this role is for you, then Impulse Leisure would welcome your application, and has many benefits to offer.

We are an equal opportunities employer, and we welcome applications from all sections of the community, especially those from black and minority ethnic groups who are currently under-represented in our workforce.

Appointment is subject to receipt of satisfactory references and a satisfactory enhanced disclosure reference from the Criminal Records Bureau, and in the future (when implemented) remain on the Independent Safeguarding Register, at all times during appointment.

Application packs and further information can be downloaded direct from our website – www.impulseleisure.co.uk.

Alternatively, you may request an application pack by telephoning the recruitment line on 01375 411267. Please leave a message clearly stating which position you are interested in applying for, together with your name, address and telephone number.

Impulse LEISURE
www.impulseleisure.co.uk
Charity No: 1080186

Perins Leisure, based in Alresford near Winchester, are looking to recruit highly motivated and dynamic staff to our organisation.



Leisure Manager, Up to £23,500

We are looking to appoint a Leisure Manager initially on a 2 year fixed contract with responsibilities for the operation and development of the health and fitness suite and dance studio as well as our leisure classes and lettings programme.

Fitness Instructors, £15,138 – 17,034 (pro rata)

We are looking to recruit to a number of part time positions ranging from 9 – 30 hours per week including days, evenings and weekends. Candidates should be personable and friendly communicators with a fitness instructor qualification.

All posts are subject to an enhanced CRB check and references.

Further information can be found at www.perinscommunity.co.uk and if you wish to apply please complete and return your application form and CV to Clive Surry - surry@perins.hants.sch.uk CLOSING DATE: 10th May 2011

The City of Salford Community Stadium Ltd is seeking a **STADIUM DIRECTOR** to lead the Stadium Management Company.

In addition to professional sport, the Stadium will be used extensively as a conference and events venue.



General Responsibilities:

- To manage all Stadium tenants.
- To deliver the Stadium Business Plan
- To manage external contracts with suppliers
- Act as main Safety Officer at all events especially match days.
- Manage Health & Safety procedure for the stadium & offices.
- Manage and monitor usage of utilities, mobile phones and general telephone systems.
- Work in close liaison with Accounts, establishing robust financial procedures and protocols.
- Work in close liaison with local authority groups such as the police, licensing officer, building control and safety.

The closing date for applications is 28th April 2011.
Please state applicants should send a CV and covering letter to: Andrew Orr, Phoenix Way, Off Barton Dock Road, Urmston, Manchester M41 7TB or email it to: aorr@eventcity.co.uk

WOKING BOROUGH COUNCIL

CHILDREN'S ACTIVITY OFFICER

Salary range: £20,128 - £24,418 per annum, plus free on-site parking

We are looking for a hard working, highly organised professional who is passionate about providing a range of children's activities on behalf of Woking Borough Council.

This is a full-time (37 hours per week), permanent post. You must be able to work the pattern of hours necessary for the service - to include weekends, evenings and public holidays.

In this role you will develop, implement and continually review the provision of children's activities within Woking Leisure Centre and Pool in the Park. Based at Woking Leisure Centre you will be line managed by the Assistant Leisure Services Manager and will work closely with other colleagues, especially during school holidays.

You must have an eye for identifying new opportunities for the service and be able to make things happen. You will have an NVQ level 3 or equivalent in Childcare and have experience and knowledge of developing and undertaking activity programmes for children.

As this job involves contact with children and/or vulnerable adults, successful applicants will be required to obtain an Enhanced Disclosure Certificate from the Criminal Records Bureau.

Assistance will be given by the Council and further details will be in the job application pack.

Woking Borough Council takes a robust approach to thoroughly checking anyone who has applied to work with children and young people and/or vulnerable adults.

For full application details and to apply, please visit www.surreyjobs.info

If you do not have Internet access, please call 01483 743858 (within office hours) for an application pack telling us the post you are interested in and where you saw it advertised.

Closing date: Friday 6 May 2011.

Interview date: Tuesday 17 May 2011.

Woking Borough Council values a diverse workforce and welcomes applications from all sections of the community.

An Equal Opportunity Employer.



Vacancies

Renard

- Senior Spa Receptionist** Luxury Five Star Hotel, London £19,500 + benefits
- Spa Manager** London £25k-£30k+ Excellent benefits
- Leisure Club Manager** London, Hotel Health club £30k + Commission
- Assistant General Manager** London, Stunning Health club Up to £25k
- Spa Sales Executive** London, 5 Star Spa & Health Club £23k
- Senior Spa Therapist/Manager** Staines, Health Club & Spa £22kOTE
- Spa Therapists** Luxury Four & Five Star Hotels, Nationwide, Up to £18,000
- Senior Spa Receptionist** London, Luxury Five Star Hotel, £19,500

Please send your CV to Neil
neilb@renardresources.co.uk or call 0207 734 2940

Fortnightly leisure recruitment, training, property and news publication which gets you the right job or the perfect candidate for your vacancy



subscribe online:
www.leisuresubs.com

leisure opportunities joblink

Book a joblink with us and we'll put your logo and company name on every page of the Leisure Opportunities website www.leisureopportunities.co.uk

This advert will have a hyperlink to your website, where you can list all the job vacancies in your company.



Go to www.leisureopportunities.co.uk and click on the link to see the latest jobs from...



TO BOOK Call: +44 1462 471747
and start getting applications for your jobs IMMEDIATELY!

Assistant Facility Managers

Type: Full time, permanent, including weekends and evenings.
Salary: £24,646 - £28,636 (subject to job evaluation) plus excellent benefits.
Location: Blyth Sports Centre & Concordia Leisure Centre.
Closing date: 20 May 2011 **Interviews:** W/c 06 June 2011

This is an exceptional opportunity and challenge for enthusiastic self motivated leisure professionals to develop their career within an established, expanding and cutting edge company operating in the leisure trust sector.

About the challenge:

The posts consist of Assistant Managers with a specific Technical emphasis and Assistant Managers with a specific Activities emphasis. Both sites are large wet and dry multipurpose venues serving the surrounding local communities, you will be responsible for running the centres on a day to day basis, reporting to the Facilities Manager. You need to be well organised under pressure, brimming with self motivation, confident in using your initiative and possess high levels of interpersonal and communication skills. You will be the integral cog of our operations and offer full support to the Facilities Manager in all key areas and deputise in their absence.

About you:

In order to take the centres forward you will need:

- To be able to inspire and motivate teams to achieve challenging targets and meticulous standards.
- Experience at supervisory or management level in both a wet and dry leisure related environment.
- A degree or equivalent leisure related qualification.
- Excellent time and project management skills.
- Excellent leadership and advanced people management skills.
- To be flexible.
- Advanced levels of IT skills.

There is a challenge and opportunity waiting for the right person to show us what they can do so if you thrive on being challenged and working with people then we want to hear from you!



For an informal discussion regarding the posts please contact Paul Metcalfe (Facilities Manager Blyth) 01670 542571 or pmetcalfe@bval.co.uk or Colin Winfield (Facilities Manager Cramlington) 01670 542566 or cwinfield@bval.co.uk For a job description, person specification and to apply either online or by downloading an application form please visit www.northumberland.gov.uk



bucks.ac.uk/jobs

Project Coordinator £19,263 - £21,657 pa Project Activator £16,701 - £18,726 pa

3 year fixed term contract – 37 hours per week

Both posts are based at High Wycombe (& Uxbridge) Campus

Are you interested in developing your career in sports development? Do you enjoy working in a busy environment where teamwork is crucial? Are you interested in working closely with a range of key partners and sports bodies; locally, regionally and nationally and helping to develop and implement the Active University Development Plan? If so, we are looking for an experienced sports coordinator and activator to join our team.

Based on the Queen Alexandra Road Campus, this faculty/central appointment, seeks two enthusiastic self motivated individuals to coordinate and support the Bucks Active University Project in the roles of Project Coordinator and Project Activator.

The Project Coordinator will be responsible for building sustainable partnerships and infrastructures, working closely with national governing bodies of sport and other key partners, to facilitate and enhance the student experience through sport. You will be responsible for the effective and efficient development, implementation and delivery of the Active Universities Project; aimed at increasing the number and type of new sporting activities and programmes available to students and employees. You will be required to oversee the development and delivery of innovative and inviting sports programmes aimed at increasing, engaging and retaining the number of new students and employees participating in sport. **Job Ref: 11/2095**

The Project Activator, will be responsible for increasing the number and type of new sporting activities and programmes available to students and employees, increasing the number of students and employees participating regularly in sport and physical activity and building sustainable partnerships and infrastructures to enhance the student experience. You will also be required to develop and deliver innovative and inviting sports programmes aimed at engaging and retaining new students and employees. **Job Ref: 11/2094**

You should possess a good honours degree or equivalent and have experience of working in a sports development or sports related environment, with outstanding verbal and written communication skills and the ability to work under pressure as part of a team are essential to the roles.

For more information or an informal chat, please contact Carina Page on carina.page@bucks.ac.uk or call 01494 522 141 ext 4139.

Closing date: 3 May 2011.

Application form and job descriptions available at www.bucks.ac.uk/jobs e-mail: jobs@bucks.ac.uk or telephone: (01494) 605044.

Committed to equality and diversity.



New Walthamstow plans unveiled

PETE HAYMAN

A new leisure centre; public spaces; and around 300 homes are being proposed as part of a £50m regeneration of the historic Walthamstow Stadium site in east London.

London and Quadrant (L&Q) is behind the proposals, which also aims to bring the heritage of the site into "long-term use for the whole community" and will create 250 jobs. Two public exhibitions have been held by L&Q, which saw members of the public submit a range of potential uses for the proposed leisure centre and public spaces.

Activities such as bingo and short mat bowls for senior citizens; art exhibitions/installations; arts space; and a cyber café were all mooted.



The historic Walthamstow Stadium is poised for a major redevelopment

An L&Q spokesperson said: "We are now reviewing the results of the consultation events and continuing our community engagement as we work on finalising our plans."

The O2 'generates £400m' for London economy

TOM WALKER

The O2 Arena in Greenwich, London, generates £400m a year for the capital's economy, according to the venue's owner and operator.

AEG Europe commissioned consultancy Why Not to assess the social and economic

impact of The O2 since its opening in June 2007, which looked at its position as an attraction, employer and catalyst for regeneration.

Findings suggest that the venue attracts up to 7.2 million visitors a year – creating more than £405m of additional income for London.

Football League nets reduced TV deal

PETE HAYMAN

The Football League has announced a new three-year television broadcasting agreement with Sky Sports worth £195m – a decrease of 26 per cent on the current deal.

Under the terms of the new deal to start in 2012-13, Sky Sports has been awarded rights to screen npower Football League, Carling Cup and Johnstone's Paint Trophy games.

Discussions remain ongoing between the Football League and broadcasters regarding the rights to free-to-air highlights.

However, it compares with a £264m agreement signed in 2007, which covered a three-year period starting in 2009-10 and included a deal for BBC Sport to show highlights.

Football League chair Greg Clarke said: "This has been a challenging climate in which to negotiate television rights, given the state of



The deal is a 26 per cent reduction on current terms

the economy and the lack of competitive tension in the sports broadcasting market.

"I am confident that our clubs will take heart from seeing such a significant ongoing investment in their competitions, despite a reduced level of broadcasting income."

- ACE +44 (0)1669 631 210
www.acenterprises.org.uk
- Arts & Business +44 (0)20 7378 8143
www.aandb.org.uk
- ALVA +44 (0)20 7222 1728
www.alva.org.uk
- Arts Council +44 (0)20 7333 0100
www.artscouncil.org.uk
- ASVA +44 (0)1786 475152
www.asva.co.uk
- BALPPA +44 (0)20 7403 4455
www.balppa.org
- BHA +44 (0)845 880 7744
www.bha-online.org.uk
- BICM +44 (0)845 217 1811
www.bicm.co.uk
- BISL +44 (0)20 8780 2377
www.bisl.org
- CCPR +44 (0)20 7976 3900
www.ccpr.org.uk
- CMAE +44 (0)1334 460 850
www.cmaeurope.org
- Countryside Agency +44 (0)1242 521381
www.countryside.gov.uk
- CPRE +44 (0)20 7981 2800
www.cpre.org.uk
- English Heritage +44 (0)870 333 1181
www.english-heritage.org.uk
- FSPA +44 (0)2476 414999
www.sportsandplay.com
- FIA +44 (0)20 7420 8560
www.fia.org.uk
- HHA +44 (0)20 7259 5688
www.hha.org.uk
- IAAPA +1 703 836 4800
www.iaapa.org
- IEAP +44 (0)1403 265 988
www.ieap.co.uk
- Institute of Hospitality +44 (0)20 8661 4900
www.instituteofhospitality.org.uk
- ISPAL +44 (0)845 603 8734
www.ispal.org.uk
- LPF +44 (0)1462 471932
www.leisureprop.com
- LMCA +44 (0)1278 436910
www.lmca.info
- MLA +44 (0)20 7273 1444
www.mla.gov.uk
- NPFA +44 (0)20 7833 5360
www.playing-fields.com
- People 1st +44 (0)870 060 2550
www.people1st.co.uk
- REPs +44 (0)20 8686 6464
www.exerciseregister.org
- SAPCA +44 (0)24 7641 6316
www.sapca.org.uk
- Sports Aid +44 (0)20 7273 1975
www.sportsaid.org.uk
- Sport England +44 (0)8458 508 508
www.sportengland.org
- Springboard +44 (0)20 7497 8654
www.springboarduk.org.uk
- SkillsActive +44 (0)20 7632 2000
www.skillsactive.com
- Tourism Management Institute +44 (0)1926 641506
www.tmi.org.uk
- Tourism Society +44 (0)20 8661 4636
www.tourismsociety.org
- VisitBritain +44 (0)20 7578 1000
www.visitbritain.com
- World Leisure +1 250 497 6578
www.worldleisure.org