

leisureopportunities

17 MAY – 30 MAY 2011 ISSUE 554

Daily news & jobs: www.leisureopportunities.co.uk

£10m to help protect playing fields

PETE HAYMAN

Hugh Robertson, minister for sport and the Olympics, has helped launch a new £10m fund, which has been established in a bid to help protect playing fields.

Sport England's Protecting Playing Fields initiative will allow communities to improve local playing fields or create new sports pitches as part of the wider Places People Play legacy programme.

The agency will make the funding available across five £2m rounds, with grants of between £20,000-£50,000 to be awarded to projects throughout England.

Projects including the reinstatement of disused playing fields; improvements to the condition of pitches; and the purchase of new playing field land are among those set to benefit.



Playing fields that net funding will be protected for at least 25 years

Every scheme that receives support as part of the Protecting Playing Fields programme will also include protection for those sites from development for at least 25 years.



The complex will include a 25m swimming pool

Glenrothes leisure centre contractor appointed

PETE HAYMAN

Graham Construction has been appointed to build a new £21m sports and leisure centre in Glenrothes, which will replace the existing Fife Institute for Physical and Recreational Education (FIPRE).

Designed by B3 Architects and Crea8 Architecture, the complex will comprise a 25m x 17m, eight-lane swimming pool.

A training pool with moveable floor; a teaching pool; a strength and conditioning studio; and an 80-station gym will also be included among the facilities.

UK heritage sites in line for £52m boost

PETE HAYMAN

Five UK heritage sites are in line to receive a share of £52m after receiving initial support from the Heritage Lottery Fund (HLF).

The Temperate House Project at London's Royal Botanic Gardens has been earmarked the largest share, with a first round pass towards a full award worth £15m. Urgent conservation work to the Grade I-listed glasshouse is proposed as part of the plans for the site.

London's Geffrye Museum secured initial support towards a full grant of £10.9m, which will help fund a complete overhaul of its site, while the British Museum World Conservation and Exhibition Centre is in line for £10m.



IMAGE: ROYAL BOTANIC GARDENS, KEW

Kew's Temperate House is in line for a full HLF grant

Cumbria's Windermere Steamboat Museum and Hastings Pier, East Sussex, have also received first round passes towards a full award of £7.4m and £8.75m respectively, which will fund restoration and rejuvenation schemes.



Something
special for
everyone

Visitor Experience Consultancy Manager

c. £40,000 pa + excellent benefits
Kent

To find out more and apply please visit
our website and search using NT11/06709.
Closing date: 20 May 2011.

www.nationaltrustjobs.org.uk

Committed to equal opportunities.
Registered charity number 205846.

GET
LEISURE
OPPS

Magazine sign up at
leisureopportunities.co.uk/subs

Job board live job updates
leisureopportunities.co.uk

PDF for iPad, Kindle & smart phone
leisureopportunities.co.uk/pdf

Ezine sign up for weekly updates,
leisureopportunities.co.uk/ezine

Online on digital turning pages
leisureopportunities.co.uk/digital

Instant sign up for instant alerts,
leisureopportunities.co.uk/instant

Twitter follow us:
[@leisureopps](https://twitter.com/leisureopps) [@leisureoppsjobs](https://twitter.com/leisureoppsjobs)

RSS sign up for job & news feeds
leisureopportunities.co.uk/rss

Contacts:

The Leisure Media Company
Portmill House, Portmill Lane,
Hitchin, Herts SG5 1DJ, UK
Tel: +44 (0)1462 431385
Fax: +44 (0)1462 433909
e-mail: please use contacts'
fullname@leisuremedia.com

Subscriptions

Denise Gildea 01462 471930
subs@leisuremedia.com

Editor

Liz Terry 01462 431385

Managing Editor

Tom Walker 01462 471934

Journalists

Pete Hayman 01462 471938

Martin Nash 01462 471933

Design

Ed Gallagher 01905 20198

Internet

Dean Fox 01462 471900

Tim Nash 01462 471917

Account Managers

Recruitment, training, tenders

Paul Thorman 01462 471904

Simon Hinksman 01462 471905

Sarah Gibbs 01462 471908

Property desk

Simon Hinksman 01462 471905

Spa Opportunities & business

development, attractions and museums

Annie Lovell 01462 471907

Financial Controller

Sue Davis 01395 519398

Financial Administrator

Denise Gildea 01462 471930

Circulation Manager

Michael Emmerson 01462 471932

Subscribe to Leisure Opportunities,

Online: www.leisuresubs.com

Email: subs@leisuremedia.com

Tel: +44 (0)1462 471913

Annual subscription rates are UK £31,

Europe £41, Rest of world £62, students UK £16.

Leisure Opportunities is published fortnightly by The Leisure Media Company Limited, Portmill House, Portmill Lane, Hitchin, Herts SG5 1DJ, UK and is distributed in the USA by SPP, 75 Aberdeen Road, Emigsville, PA 17318-0437. Periodicals postage paid @ Manchester, PA POSTMASTER Send US address changes to Leisure Opportunities, c/o PO Box 437, Emigsville, PA 17318-0437. The views expressed in print are those of the author and do not necessarily represent those of the publisher The Leisure Media Company Limited. All rights reserved. No part of this publication may be reproduced, stored in a retrieval system or transmitted in any form or by means, electronic, mechanical, photocopying, recorded or otherwise without the prior permission of the copyright holder. Printed by Warners Midland plc.

©The Leisure Media Company Limited 2011

ISSN 0952/8210

SPORT

RFU faces £1.1m funding cut

PETE HAYMAN

Sport England has confirmed that it has reduced the funding available to the Rugby Football Union (RFU) by nearly £1.1m after research uncovered a fall in participation.

The decision, which also affects the Rugby Football Union for Women, follows talks between the agency and the national governing body.

Sport England's *Active People Survey* has found that participation numbers in rugby union have fallen over the last couple of years. The RFU has also admitted it will not meet growth targets set out by Sport England's 2009-2013 investment, and has now agreed to reduced funding along with fresh targets.

Sport England chief executive Jennie Price said: "The RFU has acknowledged that the challenge for rugby union is to stop the decline



Participation in rugby union has declined over the past couple of years

in participation and to inspire new and former players to get out on the pitch."

RFU chief executive John Steele added: "I now believe we have far more realistic targets for the next two years and we are committed to creating a sound platform for growth as we move towards the home World Cup in 2015."

Pick Everard to work on grassroots scheme

PETE HAYMAN

Pick Everard has been appointed by Sport England to offer procurement support as part of a £135m grassroots participation scheme.

The company will work with the funding agency on the Places People Play programme

in a bid to help meet Olympic and Paralympic legacy goals from the London Games.

Sports clubs, community groups and volunteer organisations will be given the chance to bid for funding towards the modernisation of facilities to help boost participation.

Spurs in second Olympic Stadium challenge

PETE HAYMAN

Tottenham Hotspur Football Club (THFC) has confirmed that it has launched a second legal challenge over the future of London's Olympic Stadium following the 2012 Games.

Last month, the club applied to the High Court to pursue a claim against Newham Council, which supported West Ham United Football Club's (WHUFC) successful bid for the venue.

THFC has now confirmed that it has sought permission from the High Court to bring a claim against other agencies involved, including the Olympic Park Legacy Company (OPLC). The Premier League club is calling for a judicial review of the decisions taken as part of the stadium process.



Tottenham Hotspur has widened its challenge over the stadium's future

In addition to the role of the OPLC, THFC's latest challenge also concerns the communities secretary; the minister for sport and the Olympics; and the mayor of London.

SRA submits annual appraisal

TOM WALKER/PETE HAYMAN

Brigid Simmonds OBE, chair of the Sport and Recreation Alliance (SRA), has given the coalition government its first 'sports report' at the organisation's annual conference.

In the report, Simmonds stated that, despite the spending cuts, sport has moved up the political agenda. "The restoration of the National Lottery to its original pillars will help to offset the cuts in exchequer funding that sport is experiencing, and that will be a much better outcome than for many other sectors," she said.

"We feel that sport is pretty high up the agenda for this government. The DCMS has already engaged with us in several areas, seeking SRA's views and input."

Meanwhile, the SRA has revealed that Andy Reed, former Labour MP for Loughborough,



IMAGE: BIRKBEER/LONDON/SHUTTERSTOCK.COM

Sport has moved up the political agenda, according to the SRA report

has been appointed to succeed Brigid Simmonds as the chair of the organisation.

Reed - currently a director of his own advocacy company - chairs the Volleyball England Foundation and the voice of sports volunteers and is a board member of Special Olympics GB and the Amateur Swimming Association.

Bright future for Herne Hill Velodrome

PETE HAYMAN

Herne Hill Velodrome - the last surviving venue from the London 1948 Olympic Games - is facing a brighter future after the terms of a new lease agreement were agreed.

Site owner Dulwich Estates has reached a deal with British Cycling to enable work to start on the resurfacing of the venue's track, which is expected to take place this summer.

In February, it was revealed that concept designs had been drawn up by Mike Taylor of Hopkins, the architects behind the 2012 velodrome.

The Save the Velodrome group will now look to raise funds required to revamp the wider site, alongside repair work to be funded and overseen by British Cycling.



IMAGE: SILVERFOX09

The future of Herne Hill Velodrome appears to have been safeguarded

British Cycling CEO Ian Drake said: "This should give a real boost to the Save the Velodrome campaign and it can now focus on raising funds for a new pavilion."

Whyte complete Glasgow Rangers takeover

PETE HAYMAN

Wavetower, a company fully owned by Craig Whyte's Liberty Capital, has acquired control of Glasgow Rangers Football Club for £1.

The businessman has purchased Sir David Murray's 85 per cent stake in the Scottish

Premier League club, with £5m to be made available for investment in the squad.

Wavetower has also pledged to provide funding towards the infrastructure of the stadium, while agreeing to an additional £20m over a four-year period.

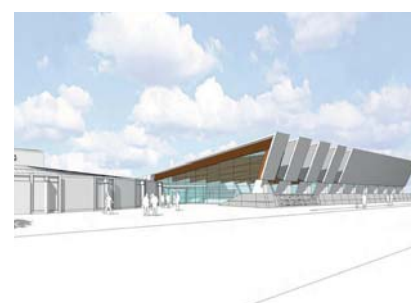
FA to unveil match-based discipline from 2011-12

PETE HAYMAN

The Football Association (FA) has revealed that match-based discipline is to be introduced to clubs that participate in open-aged, 11-a-side matches from 2011-12.

Players at local level are to be subjected to the same sanctions as Premier League and Football League players, which are determined on number of matches.

Match-based discipline had already been implemented in steps five and six of the National League System, before being introduced to step seven last season.



Councillors want to discuss the scheme further

Further scrutiny for Oxford swimming pool scheme

PETE HAYMAN

Plans for a new multi-million pound swimming pool in Blackbird Leys, Oxford, are to face further scrutiny after being called in by members of the local authority.

Oxford City Council's strategic development control committee has backed the proposals, but the scheme will now go before the planning review committee.

The FaulknerBrowns Architects-designed facility will be sited at the existing Blackbird Leys Leisure Centre and replace Temple Cowley and Blackbird Leys pools.

Work starts on London 2012 shooting venue

PETE HAYMAN

Hertfordshire-based John Sisk and Sons has started work on the construction of the 2012 Olympic and Paralympic shooting venue at London's Royal Artillery Barracks.

The temporary facility will host the Olympic shooting and Paralympic shooting events next summer, in addition to the Paralympic archery competition.

Three enclosed and three open-air ranges are to be created, including the finals range, a 10/50m range and a shotgun range. Work is to be completed by spring 2012.

Precor announces three new appointments

PETE HAYMAN

Fitness solutions supplier Precor has expanded its sales team with two new appointments, while a new EMEA network controller has also joined the group.

Alex Perrior and Ray Redman have taken up the role of internal sales representatives, with Perrior having worked at Precor for the past three years. Redman has worked in the leisure industry for seven years.

Meanwhile, entertainment and IT specialist Mark Godfrey has been appointed as Precor's network controller for EMEA.



Liverpool FC is to use TRX's Suspension Trainer

TRX awarded Liverpool FC supplier contract

PETE HAYMAN

TRX, the fitness training company, has been chosen by Liverpool Football Club (LFC) to provide playing squad and staff with its Suspension Trainer resistance system.

The system – featuring nylon-webbed straps, handles and anchors that can be attached to a secure point – will allow players to train movements from the pitch.

Specialists from TRX have worked alongside the Premier League club to establish a specific training programme that will help sustain fitness levels during the season.

Ebbw Vale sports centre plans approved

PETE HAYMAN

A multi-million pound sports centre is to be developed at The Works:Ebbw Vale, South Wales, after the proposals were given the green light by Blaenau Gwent Council.

The local authority's planning committee approved plans for the Cold Mill Plateau site, after the scheme was initially backed by the executive committee in January.

Due to replace the ageing Ebbw Vale Sports Centre, the complex will boast a 25m, six-lane competition pool; a fitness zone; a weights area; and a dance area.

Xercise4less to open in

TOM WALKER

Budget health club operator Xercise4less is to launch a new £1m "supergym" in Stockton-on-Tees later this year.

The new facility is to be located in a 32,000sq ft (3,000sq m) former retail warehouse on a prominent island site adjacent to Mandale Road, George Street and Middle Street.

Although exact details are to be confirmed, memberships will begin at £14.99 per month and facilities will include a range of cv and resistance stations, a free weights section and one of the largest aerobics studios in the area.

Jon Wright, managing director of Xercise4less, said the Stockton opening had been in the planning for a while. He said: "We have had our eye on the Stockton area for some time, but have been waiting for the right site."



Jon Wright (left) and Neil Ewin at the chain's new Stockton-on-Tees club

"Clearly the local market is ripe for a low cost health centre, because people can no longer afford the £35+ monthly membership fee that so many gyms now charge."

The announcement follows the confirmation that entrepreneur and investor Neil Ewin has joined the group as a non executive director.

Report: Kids 'shunning' physical activity

PETE HAYMAN

New research published to mark the launch of the Tata Kids of Steel triathlon initiative has found that nearly four-fifths of children spend their free time watching TV.

A survey of 1,500 young people aged between six and 15 – commissioned by Tata Steel in partnership with British Triathlon – revealed only a third played sport in their leisure time. The study also found that 56 per cent surfed the internet; 45 per cent used social networks; and 43 per cent played video games.

Karl Köhler, chief executive officer of Tata Steel in Europe, said: "This research has highlighted a number of important issues which we hope Tata Kids of Steel will help to address."



Only a third of children surveyed took part in sport in their leisure time

Fit For Sport founder and CEO Dean Horridge said the results did not come as a surprise: "I strongly believe that the current fitness advice has confused the nation to think that living a healthy lifestyle is complicated."

Fitness4less opens new health club in Southwark

TOM WALKER

Budget gym operator Fitness4less has opened a new 20,000sq ft club in Southwark, London.

The operator took over an existing club and invested £1m in refurbishing the site. Work during the 12-week project included

the restoration of original railway arch brickwork, undertaken alongside Network Rail.

The 10,000sq ft (929sq m) gym area, which sits in arches under the railway line, has been fitted with £125,000 worth of Precor equipment, including treadmills and crosstrainers.

✓ No artificial colours, flavours or preservatives

REAL JUICY PROFITS

Rowntrees®

New

Very Berry Jellies

50%
Fruit Juice

50%
Fruit Juice

✓ No artificial colours, flavours or preservatives

Rowntrees®
Sour Faces

New

contains
50%
Fruit Juice

- ROWNTREE'S® brand is in growth by 8%, worth £88m*

 **Nestlé**
PROFESSIONAL

Creative Food & Beverage Solutions

Stock up now for juicy profits!

For professional advice to grow your business, call 0800 742 842

* Source: IRI, Total Market, Value Sales, 52 w/e 1 Jan 11 © Reg. Trademark of Société des Produits Nestlé S.A.

LBHF to charge PTs for park use

PETE HAYMAN

London's Hammersmith and Fulham Council (HFC) has introduced fees for personal trainers who use the borough's parks and open spaces to provide paid-for sessions.

The council has brought in annual charges for commercial sports and fitness groups on 1 April, with personal trainers now having to pay £350 a year to use HFC's 48 parks/open spaces.

A large commercial organisation will face an annual cost of £1,200 as part of HFC's new policy, which a spokesperson said meant that the council could also ensure insurance, liability and qualifications were in place.

HFC cabinet member for residents' services Greg Smith said: "As soon as personal trainers start charging for their services and making money out of the park, they are running a



IMAGE: EVAN MUNRO

Hurlingham Park is one of the parks within Hammersmith and Fulham

business and would need a licence. Taxpayers don't expect them to get a free ride."

Fitness Industry Association CEO Dave Stalker said: "We are currently looking into developing a standard for outdoor fitness operators and trainers, to demonstrate industry professionalism and safety."

Work starts on Cannock leisure revamp

PETE HAYMAN

Cannock Chase District Council (CCDC) has started work on the multi-million pound modernisation of its Chase Leisure Centre.

Derby-based GF Tomlinson has been appointed to undertake the revamp, which is due for completion in 2012 and will include a 25m pool with boom and moveable floor; a 150-station fitness suite and dance studio and a changing village are also proposed.

Two temporary entrances for the leisure centre and golf course have been created at the rear of the property, with the main entrance now shut.

Saunders Architects LLP carried out the initial designs, with Horsley Huber Architects now working alongside GF Tomlinson.



A 150-station fitness suite will be included as part of the new-look venue

CCDC corporate director Tony McGovern said: "The dry side facilities including group exercise, badminton, football, health and fitness and indoor bowls will continue to be available during the construction."

East Riding of Yorkshire plans three fitness upgrades

PETE HAYMAN

East Riding of Yorkshire Council (ERYC) is to revamp the Tone Zone fitness suites at three centres – Goole, Hornsea and Beverley.

Goole Leisure Centre's Tone Zone is the first to undergo work, which will be extended to

offer a 70-station facility fitted with new Matrix machines and will reopen in mid-August.

Hornsea and Beverley facilities will also receive new equipment, with the former to be shut between 19-28 May. Beverley's Tone Zone will close between 26 May-11 June.

£1m refurbishment for Nottingham leisure centre

PETE HAYMAN

A new 275sq m (2,960sq ft) fitness suite will form part of a £1m revamp of Clifton Leisure Centre in Nottingham, which is to be undertaken by the local authority.

Along with the revamp and expansion of the current fitness suite, Nottingham City Council will also remove two squash courts and refurbish the health suite.

Council architects worked on the design of the scheme, with Allan Joyce Architects appointed as project architects. GF Tomlinson is the main contractor.



Fitness equipment has been supplied by Precor

Revamp for Greasley Sports and Community Centre

PETE HAYMAN

Greasley Parish Council and Precor have carried out a refurbishment of the health and fitness facilities at Greasley Sports and Community Centre, Nottinghamshire.

The Lifestyles Fitness Suite has increased in size by 30 per cent from 159sq m (1,711sq ft) to 206sq m (2,217sq ft) in the first phase of a two-year programme at the venue.

Work to expand the gym was made possible by adapting a snooker and table tennis area to increase the free weights space, which is fitted with Precor equipment.

Funding boost for new Matlock leisure centre

PETE HAYMAN

Arc Leisure Matlock, a new leisure complex under development in Derbyshire, has received £30,000 towards the installation of a moveable floor in its main pool.

The Amateur Swimming Association funding will help allow the pool to offer a depth of 2m throughout or different depths to cater for lessons and other activities.

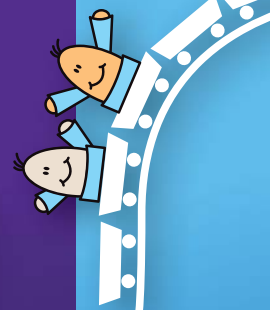
In addition to the eight-lane, 25m pool, Arc Leisure Matlock will also offer a 50-station gym; and a teaching pool and toddler splash pad when it opens this summer.

the freshest ideas and the latest lines in leisure

exhibit at



20-22 Sept 2011
NEC Birmingham



LEISURE INDUSTRY WEEK 20-22 September 2011 · NEC Birmingham

LIW provides an exclusive platform for suppliers and service providers across the Leisure Industry. Attracting 9580* trade visitors and boasting brand new initiatives and features for 2011, LIW offers you the perfect solution to your sales and marketing objectives.

LIW is the UK's leading and most influential trade show for out of home leisure businesses, with seven sectors each tailored to the specific needs of the communities we serve.

If you are looking to position yourself in front of senior operators from across the leisure industry, then contact Donna Oliver on 020 7955 3979 or donna.oliver@ubm.com for more information.



*ABC audited

www.liw.co.uk

Compulsory purchase for Margate's Dreamland site

PETE HAYMAN

Thanet District Council (TDC) is to serve a compulsory purchase order in order to take control of the former Dreamland theme park site in Margate, Kent.

A compulsory purchase order is due to be served after talks with the current owner, Margate Town Centre Regeneration Company, collapsed.

TDC is working with the Dreamland Trust to create a new tourist attraction on the site, which will include a theme park containing a number of historic rides.



The Space Pavilion forms part of the new facility

£3m Discovery Centre opens at Jodrell Bank

PETE HAYMAN

A new multi-million pound 'live science' Discovery Centre has been officially opened by the University of Manchester at Jodrell Bank Observatory, Cheshire.

The £3m development has included a new entrance building – the Planet Pavilion – and the Space Pavilion, which will be used for exhibitions and events.

Feilden Clegg Bradley Studios were behind the design of the new facilities, which were built by John Turner and Sons. Capita Symonds was project manager.

5D laser ride to open at Merlin's London Dungeon

PETE HAYMAN

A new 5D laser ride – Vengeance – is to open at the London Dungeon on 28 May.

The Merlin Entertainments Group-run attraction said the ride will take guests back to a séance set at 50 Berkeley Square.

Alleged to be the one of London's most haunted properties at the time, a high-definition 3D film will see spirits come to life amid special 4D effects.

The fifth dimension will see a laser shoot-out, which will enable guests to fire at the spirits using a Victorian-style revolver.

Chester biodome project on hold

TOM WALKER

Chester Zoo has shelved its plans for a new £90m Heart of Africa biodome attraction, saying that the project will now form a 'latter part' of the zoo's £225m Natural Vision scheme.

A spokesperson told *Leisure Opportunities* the biodome had been postponed due to government cuts and that another part of the Natural Vision would take priority and open as the first phase of the ambitious redevelopment.

The spokesperson said: "The biodome has been put on hold and will now be a latter part of the Natural Vision project. The Islands project has been brought forward and this will now be the first phase with a pencilled-in opening date of 2014."

Connected by a boat ride, the £30m Islands project will pull together some of the existing



Chester Zoo has been forced to shelve its Heart of Africa development

animal species to create a themed experience. It will include educational exhibits, play areas, restaurants and village-style food stands.

Work on the Islands experience, which will connect various parts of Chester Zoo, is expected to commence in 2012 and will take around 18 months to complete.

NRM cancels £21m redevelopment plans

PETE HAYMAN

York's National Railway Museum (NRM) has confirmed that it has been forced to abandon its plans for a £21m redevelopment after failing in a £7m funding bid.

Director Steve Davies said the attraction was informed on 11 April that efforts to secure Regional Growth Fund (RGF) backing had been unsuccessful. The RGF bid, which Davies said was "always a long-shot", was designed to plug a funding gap after £10m worth of Yorkshire Forward and government support was withdrawn.

Under plans for the NRM+ project, the attraction's largest exhibition space was to be subject to an extensive transformation with new multimedia and multi-sensory displays.



NRM+ would have led to an extensive transformation of the attraction

Davies admitted that the NRM+ scheme was now no longer viable, but said: "We have other exciting projects in the offing, including the recently begun redevelopment of the museum's city entrance and shop."

NMNI announces further TITANICa details

PETE HAYMAN

National Museums Northern Ireland has announced further details about the TITANICa experience due to open later this month.

In addition to TITANICa: The Exhibition, the Ulster Folk and Transport Museum will

also launch TITANICa: The People's Story – a living experience of the ill-fated liner.

Visitors will have the opportunity to walk through recreated streets and homes of those who were alive during the period before, during and after *Titanic's* maiden voyage.

Away Spa launches at W London

PETE HAYMAN

W Hotels has unveiled its new flagship hotel on the corner of Leicester Square and Wardour Street in central London.

The 192-room W London-Leicester Square features a sixth floor Away Spa, which includes five treatment rooms; three private spa suites; sauna and steamrooms; and a beauty boutique and bar. Men's and women's relaxation lounges and dedicated detox and refuel relaxation space are also on offer at the Away Spa, which uses REN and Aromatherapy Associates products.

W London-Leicester Square also offers the Sweat fitness facility; Spice Market – Michelin-starred chef Jean-Georges Vongerichten's signature restaurant; and the Wyld bar.

Eva Ziegler, the global brand leader at W Hotels Worldwide, said: "London is an



Away Spa is located on the sixth floor of the W London-Leicester Square

important gateway city globally, and the opening of W London has been highly anticipated by us all.

"From New York City, the birthplace of W Hotels, to London, this iconic opening is sure to propel the W brand in its continued transformation into a global powerhouse."

St Pancras Renaissance officially opens

PETE HAYMAN

JW Marriott has officially unveiled London's historic St Pancras Renaissance Hotel, following the completion of an extensive £150m restoration of the Victorian property.

Manhattan Loft Corporation worked with contractor Galliford Try; RHWL Architects; conservation architects Richard Griffiths; and GA Design International on the scheme.

Facilities include a 6,226sq ft (578sq m) spa, which includes five treatment rooms and a couple's suite; a spa pool; and a relaxation area. Cinq Mondes will devise the treatment menu at the hotel, which opened 138 years to the day after the Midland Grand first opened on the site.



The historic Victorian property underwent an extensive £150m revamp

The 245-room hotel also boasts chef Marcus Wareing's flagship restaurant – The Gilbert Scott – and the Hansom Hall, a banquet area capable of accommodating 550 people.

May relaunch for Norton Park Hotel spa

PETE HAYMAN

Norton Park Hotel, Hampshire, has confirmed that its new-look spa is to reopen on 19 May following a £100,000 revamp.

The 175-room property's spa area will incorporate 10 treatment rooms; a nail bar; an

indoor swimming pool; a sauna and steam-room; and an ice fountain.

A Technogym-supplied fitness suite, heated loungers and a relaxation lounge also form part of the new-look spa, which will offer a treatment menu supplied by ESPA.



leisure media
STUDIO

Industry-leading marketing and design services

With more than 30 years' experience, **leisure media studio** will work with you to create bespoke print and web solutions to power your marketing

- ▶ Web design
- ▶ Email marketing
- ▶ Contract publishing
- ▶ Graphic design
- ▶ Digital turning pages
- ▶ Image retouching
- ▶ Illustration
- ▶ Advertising design
- ▶ Direct mail
- ▶ Print

LET US QUOTE YOU

Contact Tim Nash

Tel +44 (0)1462 471917

timnash@leisuremedia.com

Are you passionate about the company?



PHILIPPE ROSSITER
is chief executive of the
Institute of Hospitality

Among the top companies to work for in the UK – identified in the recent *Sunday Times* league table – was a small IT solutions business with one of the best employee engagement cultures. According to its managing director, there are plenty of firms which do the same as his business, and, therefore, the only point of differentiation is with customer service; “our customer satisfaction is extraordinary”, but you can only achieve this “if your staff are passionate about the company.”

Looking to the hospitality industry, which is typified by the predominance of small businesses, it is clear that the same fundamentals apply to the nature of the sector. There are plenty of businesses providing a food, beverage and accommodation offer, so how can an organisation stand out from the crowd? The answer seems to be fairly simple; it has to be by providing excellent customer service, and this can only be delivered by enthusiastic, and knowledgeable staff. Of course, the product offer has to be sound and responsive to demand, yet without an engaged and skilled delivery it will never provide that ‘wow’ factor.

Identifying the requirement is one thing, translating this into action is another, for although everyone within the business has to ‘live’ the culture in order to create those ideal conditions for good customer service to occur, establishing what is the appropriate organisational culture is often much less obvious. This is where vision and leadership are essential. Creating the culture and embedding it within the organisation is a leadership responsibility, where all employees must feel able to contribute to the business knowing that their opinions are valued, and are acted upon.

Above all, there has to be trust throughout the organisation, between managers and employees, as well as (and often more importantly) between employees themselves. Trust allows the open sharing of knowledge and ideas such that all within the organisation are made to feel part of a single team. In this environment, placing the customer at the core of all the business’s activities is much easier to achieve.

HOTELS

Summer start for Cardiff scheme?

PETE HAYMAN

Construction work on the Bayscape development in Cardiff Bay – including Wales’ tallest building – could be poised to get underway in late summer/autumn this year.

Developers are currently in discussions with architects Harper Downie to finalise plans for the scheme, which is earmarked to include a 32-storey hotel operated by Wyndham Hotel Group.

Ardmore Construction has been appointed to deliver the scheme, which will include the 200-room hotel; serviced apartments; residential units; and retail outlets.

Talks are also ongoing with a series of finance partners with a view to finalising the funding for the project, which is to be managed by Day and Johnson. As part of the hotel, a signature bar and restaurant are to be located on



The new 32-storey Wyndham Hotel will be the tallest building in Wales

the upper floors and will provide views overlooking Cardiff Bay. A swimming pool and spa are also earmarked under the plans.

A 25-year agreement between the developers and the Wyndham Hotel Group has already been confirmed for the operation of the new hotel when the development is completed.

Whitbread to accelerate Premier Inn growth

PETE HAYMAN

Whitbread plans to accelerate the expansion of Premier Inn, which will see the budget chain increase capacity by 50 per cent in five years.

The hospitality group has also announced that its Costa Coffee business is set to double

to 3,500 locations across the world under its five-year growth milestones.

It comes after Whitbread reported an 11.5 per cent increase in total revenue for the financial year to 3 March, with underlying pre-tax profits up more than a fifth to £287.1m.

PKF: ‘Steady’ period for UK hotel operators

PETE HAYMAN

Hotel operators across the UK have reported “steady” trading in both February and March, according to figures from PKF Hotel Consultancy Services.

Although room occupancy in London was down 4.7 per cent, compared with February 2010, rooms yield increased by 1.7 per cent and room rate grew by 6.7 per cent.

PKF’s preliminary March figures have revealed a 7.4 per cent year-on-year increase in room rate; a 1.5 per cent growth in occupancy; and a 9 per cent increase in rooms yield. Meanwhile, regional operators saw room rate grow by 1.8 per cent in February. Rooms yield remained stable, although there was a slight decline in occupancy.



IMAGE: CHEN WEI SENG/SHUTTERSTOCK.COM

PKF found that operators experienced a “steady” February and March

Preliminary figures for regional hoteliers showed a 1.4 per cent growth in room rate and a 1.3 per cent rise in rooms yield, while occupancy remained flat at 67 per cent in March.



FitnessBooker is the leading web-based software for all sizes of health club and gym. FitnessBooker will help you increase your average transaction, drive membership, and help your business get healthier and more profitable. Check out FitnessBooker at our website, or call today, and find out how your business could benefit from:



- Membership Management
- Real-Time Online Class Booking
- Sell Membership, PT and Everything Online
- Social Media & Email Marketing
- Integrated Point-of-Sale
- Anywhere, Anytime Access Including Via Mobile Phone
- Integrated Spa Management if Required

FitnessBooker helps businesses all over the world to fulfill their potential.

www.fitness-booker.com

Taking a lead from the Irish government



KURT JANSON
is policy director of
Tourism Alliance

We recently published a policy document – *Tourism for Growth* – to provide an analysis of how the tourism industry can provide the economic growth and jobs that the UK needs. In the document, we laud some of the initiatives in the government's new Tourism Policy but state a number of fundamental issues that still need to be resolved for the UK industry to effectively compete on the global stage.

The issues we highlighted included the reduction in VAT on tourism products and service and Air Passenger Duty (APD), as well as an increase in marketing funding and an easier visa application process for visitors from emerging markets.

While the government has largely filed these issues in the 'Too Hard' basket, this has not been the case for Irish finance minister Michael Noonan. Noonan has set out the Irish government's new strategy for creating jobs in which he has outlined a tourism plan – one that addresses all four of these crucial competitiveness issues.

Interestingly, Ireland's removal of APD is being linked to a requirement for airlines to bring in additional visitors into the country. It is the type of incentive that should inspire airlines and the airports to respond and could be used as a model here, where the government has decided to increase APD by double the rate of inflation next year.

More importantly, it is the comparative attitudes of the UK and Irish governments that is interesting. The Tourism Alliance's requests to the UK administration to look at these four measures to restore international competitiveness have so far been met with the standard answer that, in the current economic circumstances, a reduction in taxes on the tourism industry cannot be afforded. However in Ireland, where public finances are in a considerably worse condition, they have realised that they cannot afford not to make these changes.

TOURISM

Sector reports little wedding cheer

PETE HAYMAN

April's Royal Wedding had a "limited effect" on incremental inbound tourism business in the UK despite positive media coverage, according to UKinbound members.

The tourism agency said its research had found that global coverage of the event had created an "overall positive image", but warned visitors were still being deterred.

UKinbound has called on the government to work with the industry to tackle issues that it said was harming tourism, including airport departure taxes.

High rates of VAT on accommodation and other services have also come under fire, as well as a "cumbersome" visa application process for emerging markets such as China.

UKinbound chief executive Mary Rance said: "Many of our members feel that the



IMAGE: AURELIEN GUTCHARD

UKinbound members believed the wedding created a 'positive image'

recent widespread global media coverage has created a very positive image of the UK.

"However, to translate this into tangible business in the longer term, it is vital that the government and industry as a whole work together to address some of the key factors which continue to deter potential visitors."

Pontcysyllte Aqueduct tourism strategy backed

PETE HAYMAN

Wrexham Council has approved a plan to improve the tourism offer of Pontcysyllte Aqueduct and Canal, North Wales.

Members of the environment and regeneration scrutiny committee recommended that

the council's executive board backs the document when it meets on 7 June.

The plan identifies seven communities within the 11-mile (17.7km) canal corridor with "unique opportunities for development", including a focus on better visitor facilities.

Irish tourism to receive major tax breaks

PETE HAYMAN

Ireland's tourism industry is to receive a boost from the government, after plans to reduce the tax burden on the sector were revealed by finance minister Michael Noonan.

VAT rates applied to tourism products, such as theatres, cinemas, amusement parks and sporting facilities, have been reduced by Noonan from 13.5 per cent to 9 per cent. The new rate will also apply to hospitality businesses such as restaurants, hotels and holiday accommodation.

In addition to the VAT cut, Noonan also announced that the €3 (£2.60) air travel tax is to be abolished, subject to an agreement with airlines to bring in additional passenger numbers to the country.



IMAGE: ANDREI NERASSOV / SHUTTERSTOCK.COM

The measures are designed to reinvigorate Ireland's tourism industry

Meanwhile, visitors looking to travel to Ireland and holding a visa allowing entry to the UK will not have to apply to the Irish government for a separate visa.

£18.1m Lyric Theatre opens

PETE HAYMAN

A gala performance of Arthur Miller's *The Crucible* has marked the launch of the new £18.1m Lyric Theatre in Belfast, Northern Ireland – two years after work commenced.

Dublin-based architects O'Donnell and Tuomey were selected to design the new venue; one of 56 entries into an international competition held in 2003.

Built by main contractor Gilbert Ash N.I., the Lyric Theatre is nearly three times larger than its predecessor and boasts a 389-seat main performance area – the Northern Bank Stage. A second performance studio will be capable of catering for between 110-172 people and is designed to accommodate a wide range of performance styles.

Elsewhere, a third space offers a rehearsal room and is the same size as the main



IMAGE: DENNIS GILBERT

Dublin-based architects O'Donnell and Tuomey designed the building

auditorium stage. An education suite, dressing rooms and a river terrace are also among the facilities at the arts venue.

Arts Council of Northern Ireland invested £2.4m in the development of the Lyric Theatre, in addition to more than £9.5m from the Northern Ireland Executive.

£6.5m Scarborough Spa overhaul complete

PETE HAYMAN

A performance by the Bolshoi Symphony Orchestra has marked the completion of a £6.5m revamp of Scarborough Spa.

Scarborough Borough Council has led an extensive transformation of the Grade II*-

listed concert hall, which has included an expansion of the Grand Hall's stage area.

Access lifts for stage sets have been installed to enable the venue to put on more shows and performances, while communications and air conditioning systems have been improved.

Aberdeen baths set for arts centre revamp

PETE HAYMAN

Aberdeen's Bon Accord Baths building is to be transformed into a new arts centre after the local authority named the Carpe Diem Trust as its preferred bidder for the site.

The trust – a consortium of local professional people and businessmen/women – is looking to turn the 1930s property into a commercially-run, unsubsidised facility.

Aberdeen City Council's finance and management committee chose the trust to lead the scheme, which is set to create around 50 jobs.

The former baths building will provide a theatre; arts and dance studios; a music recording studio; a bar/restaurant; and a café, as well as plans for function rooms.



The local authority agreed to transfer the baths to the Carpe Diem Trust

Chris Wood of the Carpe Diem Trust said: "Our proposal is to create a public arts centre within the former Bon Accord Baths. It will be run as a commercial and private venture."

Councillors back Hornsey Town Hall vision

PETE HAYMAN

Haringey Council's executive has agreed to press forward with plans for the transformation of Crouch End's Grade II*-listed Hornsey Town Hall into an arts venue.

Mountview Academy of Theatre Arts is to be invited to make the venue its new home, which will open up access to spaces of the building currently closed.

Haringey Council has been working with Hornsey Town Hall Creative Trust on the scheme, which will also see a new centre of arts education and training established.



IMAGE: KOIS MIAM

Trafalgar Square held a Big Dance event in 2010

'National plans' for London's Big Dance 2012

PETE HAYMAN

London's biennial dance festival – the Big Dance – is to extend to communities across the country next summer as part of the culmination of the 2012 Cultural Olympiad.

Due to take place between 7-15 July, the capital's Legacy Trust UK programme will see the event involve a number of events led by a network of dance groups in England.

Big Dance London – backed by the Legacy Trust, the mayor and Arts Council England – will feature a dance piece comprising 2,000 people in Trafalgar Square.

Trust to run Hepworth Wakefield art gallery

PETE HAYMAN

Wakefield Council has revealed that the Hepworth Wakefield – one of the largest purpose-built galleries built outside London – is to be run by a charitable trust.

The council's cabinet approved the transfer of the venue from local authority-operation to the trust, as well as the granting of leases at peppercorn rents.

Hepworth Wakefield will commemorate the work of Wakefield-born sculptor Barbara Hepworth, while housing the city's permanent collection of 6,000 art works.



The development is to be completed by mid-2013

Phantassie development proposals approved

PETE HAYMAN

Scotland-based developer Phantassie Heritage has received the green light to proceed with a new mixed-use retail, heritage and leisure attraction in East Lothian.

Construction work on the 73,000sq ft (6,782sq m) complex is to start early next year, with retail, bar, restaurant and leisure facilities included among the plans.

The scheme will see the transformation of a number of Grade B-listed properties on the 19th century Phantassie Steading site, with work to be completed by mid-2013.

New leaseholder for St Annes' Island complex

PETE HAYMAN

St Annes' Island complex will benefit from new 3D cinema facilities and a fifth screen after Fylde Borough Council (FBC) named Paul Jervis as its new leaseholder.

Jervis owns three other cinemas across the UK and is looking to reopen the venue this summer. He is also seeking tenants for the amusement arcade and restaurant.

FBC director of strategic development services Paul Walker said: "It's exciting to see an experienced cinema operator come to town with all the latest technology."

Preferred bidder named for Whitley Bay scheme

PETE HAYMAN

Construction firm Robertson has been announced by North Tyneside Council (NTC) as its preferred bidder for the redevelopment of Whitley Bay's Spanish City.

A boutique hotel; new public spaces; and outdoor performance areas are included in the plans for the scheme, which covers a 3-hectare (7.4-acre) seafront site.

NTC elected mayor Linda Arkley said: "The redevelopment of the Spanish City site is something that we have been working to deliver for more than 10 years."

Report explores Millennium projects' impact

PETE HAYMAN

A new report commissioned by the Big Lottery Fund (BIG) has examined the impact of schemes funded by the Millennium Commission.

Millennium Now has been produced a decade on from the launch of many projects, which include Cardiff's Millennium Stadium and the Eden Project, Cornwall. More than 200 individual schemes received a share of £1.3bn of National Lottery funding.

BIG took over the responsibilities of the Millennium Commission in 2006. Mike O'Connor, the former chief executive of the commission, said: "A few projects went belly up but if we had made no mistakes it would have meant we had not taken enough risks."



IMAGE: THOMAS DUESSING

The Millennium Stadium was handed Millennium Commission funding

"Taking risks with public money is not the normal way to operate but the result is that we still benefit from treasures such as the Eden Project and the Millennium Stadium."

New Mersey Leisure plans submitted

PETE HAYMAN

Plans for a £30m leisure-led mixed-use scheme adjacent to New Mersey Retail Park in Speke, Liverpool, have been submitted by property firm, the Benmore Group.

Hotels, restaurants, a multi-screen cinema and a fitness club are proposed as part of the New Mersey Leisure complex, which would occupy a 15-acre (6.1-hectare) site.

It is anticipated that the first £30m phase of the Falconer Chester Hall-designed scheme will be completed by the end of 2012, contributing around £5.5m to Liverpool's regional economy.

Benmore Group chief executive David Burrows said: "This development will complement existing developments and bring activity to the area during the evenings. We conducted a major consultation exercise with



Hotels, a cinema and a gym are among the Benmore Group's proposals

local people and received overwhelmingly positive feedback to our plans from more than 1,000 residents."

Adam Hall of Falconer Chester Hall said: "This development will be designed in order to make it a destination with significant appeal to families and leisure visitors."

Work starts on Higham's Park regeneration

PETE HAYMAN

Spenhill, the wholly-owned regeneration subsidiary of Tesco, has started work on a £105m mixed-use scheme in Higham's Park.

The 11.2-acre (4.5-hectare) project has been designed by ColladoCollins and will include

a new public park and a new pedestrianised street comprising retail and café units.

Work can now commence on the first phase after Spenhill concluded the final agreements of the Section 106 arrangement with the London Borough of Waltham Forest.

For Sale

freehold





Caravan park

Robin Hood View Caravan Park, Middle Plantation, Belle Eau Park, Kirklington, Nottinghamshire NG22 8TY

- Attractive rural site offering 25 touring pitches & extensive caravan storage areas
- Significant potential for further commercialisation - planning consent for 30 timber cabins approved
- Approximately 2.54 hectares (6.3 acres)
- Unconditional offers invited

For further information please contact:
James Gibson on 0121 609 8522 james.gibson@gva.co.uk
08449 02 03 04 gva.co.uk

EXPRESSIONS OF INTEREST SOUGHT



Wellesbourne Parish Council has recently acquired this local sports club building adjoining our sports fields. There is approximately 500 sq.m. of space over two floors and a large car park.

We are looking to modernise it sustainably, and to convert it to self-funding community use including some or all of these facilities:-

- Gym or fitness suite
- Changing rooms and showers
- Exercise/dance space/meeting rooms
- Cafe/occasional bar
- Youth facilities/club

We hope there will be a second stage of development involving a sports hall, muga, skate park etc

It will probably be structured as a Social Enterprise, and while some Parish funds are available, it is likely that more capital will need to be raised through grants, and perhaps from operating partners.

Any organisation or individual who might be interested in helping this project forward whether as a potential operating partner, consultant, contractor, or supplier is invited to contact :

Tony Copeland on 01789 840345 or email copeland1@talk21.com
Or write to Wellesbourne Parish Council at 2, School Rd, Wellesbourne, Warwick CV35 9NH.



WELLESBOURNE PARISH COUNCIL

Wellesbourne is one of the largest rural settlements in Warwickshire located about 5 miles from Stratford-upon-Avon and 7 from Warwick/Leamington Spa. The Parish has a population of about 6000 with the same number again in smaller villages nearby.

The Leisure Property Forum





Join us!

Membership of the Forum includes:

- Regular networking opportunities
- A full programme of leisure property related early evening seminars
- Details of forthcoming LPF events and other industry dates on our website
- Members' rates to LPF seminars and events
- Complimentary places at some events
- A free subscription to Leisure Opportunities magazine, which features regular LPF columns, tenders, for sale adverts and property news
- A 10% discount on property advertising in Leisure Opportunities magazine
- A dedicated LPF monthly email bulletin, delivered straight to your mailbox
- Access to the full listing of all our members

For more information visit www.leisurepropertyforum.org
Email: info@leisurepropertyforum.org
Tel: +44 (0)1462 471932 **Fax:** +44 (0)1462 433909
 VAT Registration No. 844 8560 00

EXPRESSION OF INTEREST

Management of Sports and Leisure Facilities



Cornwall Council is considering options for managing, operating and developing its community leisure function and fifteen sports and leisure facilities throughout the County. Information about these facilities together with the scope, length, estimated value and details of the proposed contract can be found at www.tendersincornwall.co.uk from 6th May 2011

The Council has a preference for a non-profit distributing organisation and invites expressions of interest from any organisation with suitable qualifications or experience. Pre-qualification questionnaires and information will be provided on the above website.

The Council's existing sport and leisure team is considering the possibility of establishing a locally-based and owned charitable trust.

The deadline for submission of pre-qualification questionnaires is 27th May 2011.

Hospitality & Leisure

Specialist Property Services

**Valuations, Sales, Aquisitions,
Rent Reviews, Expert Witness.**

Contact: Colin White
colin.white@edwardsymmons.com

London • Bristol • Leeds • Liverpool • Manchester • Plymouth • Southampton

**Edward
Symmons**

020 7344 4500

www.edwardsymmons.com

UK and international
property experts
covering all sectors of the
leisure and hotel industry

Alan Plumb
+44 (0) 1865 269000
aplumb@savills.com
savills.co.uk/leisure

savills

savills.com

Rating • Planning & Site Licensing

**CHARLES
F.J. JONES & Son
LLP**
CHARTERED SURVEYORS

**Leading Professional Advisors
to the Leisure Industry
for over 70 years**

Charles F Jones & Son LLP

01244 328141 www.cfj.co.uk

16 Grosvenor Court Foregate Street Chester CH1 1HN

Valuations • Sales & Acquisitions

TO ADVERTISE IN THE PROPERTY DIRECTORY

please contact
Simon Hinksman on
(01462) 471905
or email
property@leisuremedia.com

LEISURE PROPERTY FORUM CORPORATE MEMBERS' DIRECTORY



For membership information
please contact Michael Emmerson
info@leisurepropertyforum.org

www.leisurepropertyforum.org

3D Reid
Tel: 0121 212 2221
www.3dreid.com

**Alan Conisbee &
Associates Ltd**
Tel: 020 7700 6666

Ashurst LLP
Tel: 020 7638 1111
www.ashurst.com

BCI Design
Tel: 020 7021 0217
www.bci-design.com

Berwin Leighton Paisner
Tel: 020 7760 1000
www.blplaw.com

Brook Street des Roches LLP
Tel: 01235 836614
www.bsdr.com

CB Richard Ellis Ltd
Tel: 020 7182 2197
www.cbre.com

CgMs Consulting
Tel: 020 7583 6767
www.cgms.co.uk

Chase & Partners LLP
Tel: 020 7389 9494
www.chaseandpartners.co.uk

Christie & Co
Tel: 0113 389 1700
www.christiecorporate.com

CMS Cameron McKenna LLP
Tel: 020 7367 2195
www.cms-cmck.com

Colliers International UK plc
Tel: 020 7487 1710
www.colliers.com/uk

Collyer Bristow LLP Solicitors
Tel: 020 7470 4408
www.collyerbristow.com

Cushman & Wakefield LLP
Tel: 020 7152 5209
www.cushwake.com

Davis Coffey Lyons
Tel: 020 7299 0700
www.coffeygroup.co.uk

DKA Associates
Tel: 020 7034 5267
www.dkallp.com

**DLA Piper Rudnick
Gray Cary UK LLP**
Tel: 020 7796 6155
www.dlapiper.com

Drivers Jonas Deloitte
Tel: 0207 3033702
www.djdeloitte.co.uk

Edward Symmons LLP
Tel: 020 7344 4500
www.edwardsymmons.com

Finers Stephens Innocent LLP
Tel: 020 7344 5312
www.fsilaw.com

Fleurets Limited
Tel: 020 7280 4700
www.fleurets.com

Gala Leisure Limited
Tel: 0115 948 5370
www.galacoral.com

Genting Casinos
Tel: 0118 939 1811
www.gentingcasinos.co.uk

Gerald Eve
Tel: 020 7333 6374
www.geraldeve.com

Grant Thornton UK LLP
Tel: 01753 781167
www.uk.gt.com

**Hadfield Cawkwell
Davidson Limited**
Tel: 0114 266 8181
www.hcd.co.uk

**Hermes Real Estate
Investment Management Ltd**
Tel: 020 7680 2145
www.hermes.co.uk

Indigo Planning
Tel: 020 8605 9400
www.indigoplanning.com

James A Baker
Tel: 01225 789343

Jones Lang Lasalle
Tel: 020 7399 5326
www.joneslanglasalle.co.uk

Kerry London Ltd
Tel: 020 7623 4957
www.kerrylondon.co.uk

King Sturge LLP
Tel: 020 7087 5500
www.kingsturge.com

Lawrence Graham LLP
Tel: 020 7379 0000
www.lg-legal.com

**Legal & General Investment
Management Holdings Ltd**
Tel: 020 3124 2763
www.lgim.co.uk

Leisure Opportunities
Tel: 01462 471 905
www.leisureopportunities.co.uk

Lunson Mitchenall
www.lunson-mitchenall.co.uk

**Mayer Brown Rowe
& Maw LLP**
Tel: 020 7782 8890
www.mayerbrownrowe.com

Merlin Entertainments
www.merlinentertainments.biz

**MWB Management
Services Ltd**
Tel: 020 7706 2121
www.mwb.co.uk

Odeon & UCI Cinemas Ltd
Tel: 0161 455 4000
www.odeonuk.com

Olswang
Tel: 020 7067 3114
www.olswang.com

Pinders
Tel: 01908 350500
www.pinders.co.uk

Reed Smith LLP
Tel: 020 3116 3000
www.reedsmith.com

Roberts Limbrick Ltd
Tel: 03333 405500
www.robertsrimbrick.com

Royal Bank of Scotland plc
Tel: 020 7672 1752
www.rbs.co.uk/corporate

RTKL-UK Ltd
Tel: 020 7306 0404
www.rtkl.com

Saturn Projects Limited
Tel: 01844 354543
www.saturnprojects.com

Savills (L&P) Ltd
Tel: 020 7409 8700
www.savills.com

Shelley Sandzer
Tel: 020 7580 3366
www.shelleysandzer.co.uk

Strutt & Parker LLP
Tel: 01722 344057

The Leisure Database Co
Tel: 020 7379 3197
www.theleisuredatabase.com

Thomas Eggar LLP
Tel: 01293 742747
www.thomaseggar.com

Tragus Group
Tel: 020 7121 6432
www.tragusgroup.com

**Vizards Wyeth Solicitors
and Notaries**
Tel: 020 7400 9999
www.vizardswyeth.com

**Willmott Dixon
Construction Ltd**
Tel: 01932 584700
www.willmotttdixon.co.uk

X-Leisure Ltd
Tel: 020 7592 1500
www.x-leisure.co.uk

Plus there are more than 70 other companies represented by individuals.

SkillsActive/IMSPA unveil 'shared vision'

PETE HAYMAN

SkillsActive and the Institute for the Management of Sport and Physical Activity (IMSPA) have unveiled a new "shared vision" for the future of the UK's skills agenda.

A Memorandum of Understanding (MoU) has been signed that aims to clarify their responsibilities in supporting the growth of sport and active leisure.

Under the terms of the new MoU, SkillsActive and IMSPA will work to support the introduction of an employer skills protocol and to support progression to chartered status for all.

It is hoped the efforts of the organisations will help bring about national standards covered by the chartered institute membership.



Stephen Studd of SkillsActive and IMSPA's Sean Holt sign the new MoU

Other aims include the establishment of a single qualifications framework covered by the chartered institute membership, as well as the embedding of the activepassport initiative.

Changing how we deliver to employers



STEPHEN STUDD
is chief executive
officer of SkillsActive

This column follows the successful launch of the SPELG report at the House of Commons where the sector had an audience with the minister for further education, skills and lifelong learning, John Hayes.

The report has been produced by leading employers from the sport and leisure industry trade association (FIA, SPORTA, LMCA and CLOA). Launching at a crucial time, the report delivers a real commitment from employers to take the lead in addressing the skills issues facing the sector. In return it outlines a number of "asks" of government, the newly launched Chartered Institute for the Management of Sport and Physical Activity (CIMSPA), and SkillsActive.

It's clear from the report that for the industry to fulfil its potential, a growth strategy must be implemented based on the professionalisation of its workforce. The government, in these tough financial times, is challenging all sectors to show how they can contribute to growing the economy and to improving skills. It is heartening to hear from Mr Hayes that the government believes that skills development should be led by a sector approach and that Sector Skills Councils are the key voices to articulate the industry's needs.

I was also extremely pleased to have been able to use the SPELG report launch to sign our Memorandum of Understanding with CIMSPA. A close relationship will lay the foundations for the development of the workforce we need. By working with us, employers set the standards and approve the qualifications that provide entry to the industry, whereas a professional body provides the support to enable our employees to rise to the top. It is a crucial synergy and we are committed to working together.

So, 4 May marked a step change in the way we deliver to employers. We know the value and potential of our sector – the challenge for employers is to continue to lead, continue to work with us and CIMSPA so the workforce can grow and that together we can make that difference.

New SPELG report findings welcomed

PETE HAYMAN

A report from leading sport and active leisure industry employers – setting out the future skills requirements needed to ensure continued growth – has been welcomed by the SkillsActive Group.

The Skills Protocol Employer Leadership Group (SPELG) in Physical Activity, Sport and Active Leisure study also aims to help the sector have a "direct impact" on wider public health issues.

Over the coming four years, SPELG aims to establish a single qualification structure led by employers, as well as working towards the need for all employees to hold a skills passport.

SPELG will also support the inception of the new Chartered Institute for the Management of Sport and Physical Activity as the sector's one professional institute.



The employer-led report aims to encourage the sector's ongoing growth

Meanwhile, SkillsActive has been identified as a "key influencer and driver of change" in the SPELG report and said its aims complemented the sector skills council's own targets.

SkillsActive CEO Stephen Studd said: "We are happy to respond to the challenge from the employers to implement the protocol."

Australia-based St ALi unveils first UK site in London

PETE HAYMAN

Melbourne, Australia-based St ALi has announced the launch of a new coffee bar, roastery and restaurant in London.

St ALi has teamed up with Long Black Ltd to open the 2,522sq ft (234.3sq m) Clerkenwell

Road property, which is housed in a former Victorian warehouse.

Tim Williams, the group's director of coffee, is also working on the development of a new Barista Certification Programme to be run by head barista Baptiste Kreyder.

Are you in the running for a career in Leisure Management?

Loughborough College offers courses in Leisure, Sport, Event and Recreation Management to help you start your career, or develop your skills and managerial expertise from an existing position in the leisure industry.

Study full time, day release, block release or by distance learning, at a variety of levels; from the ISRM Fitness Management Certificate and Higher National Diploma to full Honours Degree. The Foundation Degree and Higher Professional Diploma are fully accredited by the ISRM, and lead to use of the designatory letters M.Inst.SRM.

Recruiting now for a September 2011 start.

For more information
0845 166 2950
www.loucoll.ac.uk

Loughborough
COLLEGE est. 1909

4298_02/11

Focus Training

Adding value to your staff

As an employer of fitness professionals, you'll recognise the value of investment in training them to ensure they deliver the best possible service to your membership.

Fantastic professional courses available in:

- Personal Training
- Exercise to Music
- Gym Instructor
- Step
- Studio Cycling
- Nutrition & Weight Management
- GP Exercise Referral
- And much more.



Call Focus Now:

0333 9000 222
or **01204 388330**

www.focus-training.com



Sport Industry
Research Centre

SPORT AND LEISURE STATISTICS

FORECASTS FOR THE SPORT AND LEISURE INDUSTRIES

The Sport Industry Research Centre publishes two annual reports, Leisure Forecasts and Sport Market Forecasts. These reports provide valuable insight into future market trends.

Both publications are essential references for industry practitioners, consultants and researchers.

The Sport Market Forecasts are produced in conjunction with Sport England.

To find out more please visit
www.shu.ac.uk/ad/sportandleisure

Or contact
Susie Shaw
Phone 0114 225 5919
Fax 0114 225 4341
Email s.shaw@shu.ac.uk

Sheffield
Hallam University



leisureopportunities



jobs & news
updated daily
online

Fortnightly leisure recruitment, training, property and news publication which gets you the right job or the perfect candidate for your vacancy

subscribe online:
www.leisuresubs.com

www.leisureopportunities.com

Leisure Opportunities

training DIRECTORY

From just £534 you can access over 23,000 motivated leisure professionals for 3 months (6 consecutive insertions).

Committed to the leisure industry, they are potential students for your courses

TO ADVERTISE +44 (0)1462 431385
leisureopps@leisuremedia.com

www.leisureopportunities.co.uk

leisureopportunities

news & jobs updated daily online

YOUR 1ST CHOICE FOR RECRUITMENT & TRAINING

NEXT ISSUE:

31 MAY 2011

Book by NOON on
Weds 25th May 2011

TO ADVERTISE, Contact the
Leisure Opportunities team on
t: +44 (0)1462 431385
e: leisureopps@leisuremedia.com



Do You Provide First Aid Training?



Want to reduce your HSE Certification costs and offer the latest QCF Level 2 EFAW and PAEDIATRIC qualifications?

Enjoy FREE and FAST training centre approval. We promise to provide the same great price per certificate no matter how large or small your order.

As an established Ofqual Awarding Body, you can have confidence in receiving the highest service.

Call **0845 121 8328** or email
info@qualificationsnetwork.co.uk to find
out how you can claim 10 free certificates.*

*Terms and conditions apply

Become an Instructor of HSE First Aid at Work Courses

**The Five-Day First Aid
Instructor Course**

also includes the **PTLLS Level 3
Training Qualification**

"...I found the Instructor Course
to be excellent and a credit to
your company..."
Debbie Hull (Bishops Stortford)



Nuco Training Ltd

08456 444 999

enquiries@nucotraining.com
www.nucotraining.com
www.nucoplus.com

For all your first aid needs

**Think it's
too late
to change
your career?
Think again**

**Postgraduate Open Evening
7 June 2011, 5pm-7pm**

The Rose Bowl, Portland Gate, Leeds

To find out more visit
www.leedsmet.ac.uk/postgrad



Leeds Met offers a range of courses for people interested in sport, leisure or tourism; either as a career or for your own personal interest.

Courses include:

- MA Leisure, Sport & Culture
- MA International Tourism & Hospitality Management
- MA Cultural Tourism
- MSc International Hospitality Management
- MSc Responsible Tourism Management (Distance Learning)

**Visit www.leedsmet.ac.uk/postgrad
to find out more.**

For more details on the following jobs
visit www.leisureopportunities.co.uk
or to advertise call +44 (0)1462 431385



Visitor Services Duty Manager, *Wellcome Trust, United Kingdom*

Freelance Personal Trainer, *Reach Fitness, Cheltenham, UK*

Membership Sales Manager, *Weybridge Health, Weybridge, Surrey, UK*

Membership Sales Consultant, *Weybridge Health Club, Weybridge, UK*

Full Time Recreation Assistant, *Central YMCA, London, UK*

Operations Manager, *Edinburgh Leisure, Edinburgh, UK*

Chief Executive, *The British Association of Leisure Parks, London, UK*

Head of Sales & Commercial, *Fusion, London, UK*

Graduate Fitness Officer (2 posts), *University of Stirling, Stirling, UK*

Graduate Assistant, *University of Stirling, Stirling, UK*

Visitor Services Assistants, *National Museums Scotland, Edinburgh, UK*

Assistant Facility Managers, *Blyth Valley Arts and*

Leisure Limited, Northumberland, UK

Operations Manager, *Wolverhampton Lawn Tennis & Squash Club, UK*

Sports Coordinators x 3, *Merton School Sports Partnership, Surrey, UK*

Duty Manager, *Coral Reef (Bracknell Forest), Bracknell, UK*

Attention Personal Trainers, *Club Training, Nationwide Opportunities*

Gym Manager, Pure Gym Limited, Manchester, UK

Assistant Gym Manager, *Pure Gym Limited, Manchester, UK*

Operations Manager (Enhanced), *Derby City Council, Derby, UK*

Lifeguard, *Virgin Active, Various locations, UK*

Sports Campus Development Officer, *Derby City Council, Derby, UK*

Duty Manager, *Greenwich Leisure Ltd, North West London, UK*

Duty Manager, *Greenwich Leisure Ltd, Reigate and Banstead, UK*

Centre Manager, *Swansea Tennis Centre, Swansea, UK*

Service Manager, *Jubilee Hall Trust, Hampstead, UK*

Marketing Manager, *Coventry Sports Trust, Coventry, UK*

Operations Manager, *Lee Valley Regional Park Authority, London, UK*

Centre Manager, *Trust Thamesmead, London, UK*

Temporary b-you Advisors – 5 posts, *Derby City Council, Derby, UK*

Ever thought of a career in football? *Goals Soccer Centres plc, Nationwide, UK*

Sales and Marketing Manager, *Greenwich Leisure Ltd, Reigate, Surrey, UK*

Recreation Assistant, *Greenwich Leisure Ltd, Highgrove, Hillingdon, UK*

Sports Manager, *University College Falmouth, Falmouth, UK*

Leisure Centre Manager, *Derbyshire Dales District Council, Matlock, UK*

Project Officers, *Fields in Trust, 3 posts based in London with travel to either the West Midlands, East Midlands or South West*

Fitness Instructor, *Horizones Health & Fitness Club, Woking, UK*

Tennis Development Officer, *Swansea Tennis Centre, Swansea, UK*

Class Instructors: *Bodystep/ Bodyattack/ Body Combat, Tone Leisure, Blackbrook Pavilion, Taunton / Wellsprings Leisure Centre, Taunton, UK*

Beauty Therapist, *Virgin Active, Crouch End, UK*

Swimming Instructor, *Virgin Active, Tower Bridge, London, UK*

Aquatics Manager, *Virgin Active, Fulham, UK*

Swimming Teacher, *Virgin Active, Various locations, UK*

Swim Co-Ordinator, *Virgin Active, Leeds, UK*

Visitor Experience Consultancy Manager

Salary: c. £40,000 p.a. + excellent benefits, *National Trust, Kent, UK*

Visitor Experience Manager, *National Trust, Robertsbridge, East Sussex, UK*

Assistant Manager, *Tone Leisure, Ivybridge, UK*

Trainee Tutor, *The Training Room, Nationwide, UK*

Lead Fitness Course Tutors and Assessors, *The Training Room, Nationwide, UK*

Health Fitness Sports Manager, *Prestige sports complex, Mid Essex, UK*

Leisure Services Manager, *Bluestone National Park Resort, Pembrokeshire, UK*

Personal Trainer, *The Gym Group, Birmingham City Centre, UK*

Golf Club Sales and Membership Manager, *Mohawaren Golf Services, Saudi Arabia*

Fitness Systems Area Sales Managers, *Fitness Systems, South, Midlands /North of England, UK*

Spa Director, *Six Senses Resorts and Spas, Paris, France*

International Training Managers, *ESPA International, Farnham, Surrey, UK*

Spa Operations, *ESPA International, Farnham, Surrey, UK*

Spa Director, *SpaStaff.com Ltd, Hawaii, USA*

Spa Operations Manager, *Gleneagles Hotel, Perthshire, UK*

Assistant Spa Manager, *Greenwich Leisure Ltd, Epsom and Ewell, UK*

Business Development Manager, *Chuan Spa, London, UK*

Spa Therapists, *Renard Resources, Nationwide, UK*

Beauty Therapist, *Virgin Active, Northampton, UK*

Skin Clinic Specialist, *SpaStaff.com, Reading, UK*

Senior Therapist, *Bali Health Lounge, Manchester, UK*

Beauty Therapist, *Virgin Active, Manchester - Didsbury, UK*

Treatment Rooms for a two year lease, *Holiday Inn London, London, UK*

Spa Attendant, *Coworth Park, Ascot*

Massage Therapist, *SpaStaff.com, Dubai, United Arab Emirates*

Health Club Membership Salesperson / Manager, *Rookery Hall Hotel & Spa, Nantwich, Cheshire, UK*

Beauty Therapist, *SpaStaff.com, London, UK*

Spa and Leisure Manager, *Formby Hall Golf and Country Club, Merseyside, UK*

Beauty Therapist, *SpaStaff.com, Co. Cavan, Ireland*

Senior Spa Receptionist, *Renard Resources, London, UK*

Spa Receptionist, *Coworth Park, Ascot*

Recreation Assistant, *Greenwich Leisure Ltd, Merton, London, UK*

Leisure Assistants, *Greenwich Leisure Ltd, Harrow Partnership, UK*

Spa Therapist, *Virgin Active, Various locations, UK*

Spa Manager, *Virgin Active, Chelsea, UK*

Part Time Experienced Fitness Trainers, *The Village Health Club, Surrey, UK*

Crèche Supervisors & Playworkers, *Fusion, South West London, UK*

Sports Development Officer (Activation)

Enfield, North London

£23,976 - £28,806 pa plus flexible benefits

Lee Valley Regional Park is a 10,000 acre, 26 mile long mosaic of award-winning parklands, sports venues, heritage sites, gardens, nature reserves and riverside walks. The Park is also a key player in the London 2012 Olympics and Paralympic Games and will own and operate a number of Olympic facilities both before and after the Games.

A fantastic opportunity has become available within the Lee Valley Regional Park Authority (LVRPA) for a highly committed individual to develop and enhance sporting opportunities across a range of functions.

The main aspects of this role are to implement and maintain Lottery Funded Legacy Sports Plans for Lee Valley Regional Park Authority's Olympic venues, to enhance sporting opportunities within the Park and to activate development programmes for priority sports such as Tennis, Hockey and Canoeing. Supervising a team of seasonal sports coaches and volunteers, you will actively work towards engaging the community across the Region.

A Sports Development/Management degree is required along with sound knowledge of sports/recreation development and experience of delivering community sports projects.

If you feel that you have the right blend of skills for this role please complete an application form, found on our website www.leevalleypark.org.uk and return it to: jobs@leevalleypark.org.uk or The HR Team, Myddelton House, Bulls Cross, Enfield EN2 9HG. Alternatively, please call **01992 709839** for an application pack if you do not have access to the internet.

Closing date: 3rd June 2011

Interview date: 13th June 2011

www.leevalleypark.org.uk

We are an equal opportunities employer • No agencies please



Facility Support Manager

Location: Carnegie Leisure Centre
Salary: FC7 - £22,995 - £29,208
36 Hours

Fife Sports and Leisure Trust operate facilities and services on behalf of Fife Council.

There has never been a more exciting time to join our company as we prepare for the re-opening of the £17m refurbished Carnegie Leisure Centre in Dunfermline.

The facility will boast 2 x 25m deck level swimming pools, one with a moveable floor, children's pool, purpose built play centre, crèche, refurbished pool areas and family changing village, new health suite with steam room and spa bath as well as a 100 station gym, three purpose built aerobics studios, a 4 court sports hall and 3 squash courts.

The role of Facility Support Manager will be demanding and varied. You will require to work closely with the Area Leisure Manager in all areas of the business including managing the leisure centre operations, programming, sales, front of house operations, fitness and facility teams. You will drive the business through the effective management, coaching and development of your team, ensuring targets and standards are achieved.

We are looking for a highly ambitious and motivated professional that is passionate about fitness, has fantastic people management skills and exceeds in providing exemplary customer service.

Closing date for applications is Friday 27th May 2011.

Interviews will be held on Thursday 9th June 2011.

For an application pack

please visit www.fifeleisure.org.uk,

phone the Recruitment Hotline on 01383 602213 quoting ref number FL/98 or email

Recruitment@fifeleisure.org.uk

Scottish Charity No. SC039464 Company Registration No. SC336004



MIDDLETON SWIMMING POOL

Duty Officer

Salary: £18,273.00 - £22,090.00 per annum

Hours per week: 37 according to rota



Middleton Pool in Newport Pagnell, Buckinghamshire is a successful indoor / outdoor swimming pool that serves the local community in and around Milton Keynes.

Visit our website at www.newport-pagnell.org.uk

As a Duty Officer you'll ensure the smooth running of the facility on a daily basis and have responsibility for staff supervision. You will be expected to take an active role in the training and development of staff and assist in managing our Quest improvement plan dealing with key issues such as Health & Safety, Operational Development and Marketing and Promotions.

The successful candidate will need to be a team player, self motivated, confident in all areas of communication with enthusiasm and a positive attitude. You will need to hold a current National Pool Lifeguard Qualification and the First Aid at Work certificate. A recognised leisure management qualification would be an advantage along with a flexible attitude towards work.

This post offers 24 day's holiday per annum (in addition to Bank Holidays) plus an additional five days holiday after five years service

Overtime: Paid at 1.5 Bank Holidays worked paid at 2.0

Optional: Local Government Pension Scheme and G.M.B. union membership available.

Closing date: 5pm Friday 3rd June 2011.

For an application form, job profile or an informal chat contact Phil Brown or Sean O'Connor on (01908) 610477 option 4.



Lancaster University will open its new, state of the art, £20 million Sports Centre in July 2011. We require the following enthusiastic and committed individuals to join our Sports Centre team:

LANCASTER UNIVERSITY



Health and Fitness Advisor x 2

£19,822 - £22,971

Reference: N183

You will supervise the fitness area, offering both personal training and a variety of classes. You will ensure excellent customer service at all times and make certain that the gym and its equipment are clean and safe to use. You will collaborate with the physio team, Active Health team and Student's Union to ensure that the area is used to promote wellbeing, improve fitness and aid rehabilitation.

Climbing Instructor

£19,822 - £22,971

Reference: N184

You will supervise the wall and ensure the safety of all climbers with regular checks on the structure, holds and equipment. You will make certain that the wall remains challenging for all climbers with regular route setting and challenge setting ideas. It is essential that excellent customer service is given at all times.

Closing date for both vacancies is 31 May 2011.

To apply, access further information or register for email job alerts please visit our website.

www.hr-jobs.lancs.ac.uk

Outreach Manager

East Devon Location (Ref: LEDom001)
Circa £17 - £21k + benefits, dependent on experience
Fixed Term 30 months contract

Leisure East Devon is one of the largest leisure charitable trusts in the South West region, managing eleven sports centres plus entertainment, indoor tennis and parks facilities, with a current base of 6000+ members.

As an essential part of our business development strategy, we are seeking an experienced community development professional to expand our sports, health and events programmes beyond our facilities and throughout the surrounding areas.

With a passion for everything active, healthy and sporty, you should possess sound organisational skills and be able to share your enthusiasm and expertise with others at all levels.

This is an exciting opportunity to help shape the future of a successful, dynamic organization at a time of significant change and growth. You must therefore be ambitious, determined, goal-orientated and a team player.

LED actively encourages job applications from all members of the community. We are committed to equal opportunities in employment and service delivery. We are only interested in your ability to do the job.

For an application pack, please contact HR on: 01395 562500 (office hours only), or apply online at www.ledleisure.co.uk

**Closing date:
Noon Monday 6th June 2011**

IPS Registered No. 30029R

www.ledleisure.co.uk



Impulse Leisure is a Leisure Trust and we are actively seeking highly motivated, professional people to join our teams.

LEISURE MANAGER

Location: Corringham Leisure Centre, Thurrock, Essex
Circa £24,385 – £30,130 per annum, for an exceptional candidate

(subject to successful candidate holding a current, valid First Aid at Work, Pool Plant Operators Certificate and IOSH/ISRM Health and Safety Management Certificate or higher)
(inclusive of any 2011/2012 pay award) Full-time, permanent

(hours according to operational need, with a minimum of 37 hours per week)
Relocation package may be considered.

The post requires a highly self motivated, enthusiastic, and committed individual, who can respond to the needs of the business.

Responsibilities include the planning, co-ordination, and implementation of works programmes, and to supervise overall, the operation of the centre and its staff. The successful candidate will also be responsible for the monitoring and control of the financial aspects of the centre, while developing and expanding the centre in line with the mission and values of the organisation.

Closing date for return of completed applications: Friday 3rd June 2011

If this role is for you, then Impulse Leisure would welcome your application, and has many benefits to offer.

We are an equal opportunities employer, and we welcome applications from all sections of the community, especially those from black and minority ethnic groups who are currently under-represented in our workforce.

Appointment is subject to receipt of satisfactory references and a satisfactory enhanced disclosure reference from the Criminal Records Bureau, and in the future (when implemented) remain on the Independent Safeguarding Register, at all times during appointment.

Application packs and further information can be downloaded direct from our website – www.impulseleisure.co.uk.

Alternatively, you may request an application pack by telephoning the recruitment line on 01375 411267. Please leave a message clearly stating which position you are interested in applying for, together with your name, address and telephone number. Previous applicants need not apply



www.impulseleisure.co.uk

Charity No: 1080186



CHIEF EXECUTIVE

Salary & Benefits package: up to £100k. London Based

Dynamic, charismatic and politically astute individual to lead the UK's leading Commercial Visitor Attractions Association

The British Association of Leisure Parks, Piers and Attractions, founded in 1936, is the non profit-making Trade Association which represents the interests of owners, managers, suppliers and developers in the UK's commercial leisure parks, piers, zoos and static attractions sector. Member organisations include Alton Towers, Pleasure Beach Blackpool, London Zoo and Weston Pier. BALPPA speaks for some 300 members and ultimately for many millions of customers every year. We are now looking for an outstanding person to take the Association forward to the next stage of its development.

THE JOB

Reporting to the Chairman of the Management Committee (ManCom) the Chief Executive:

- Develops and, following approval by the ManCom, delivers the Business Plan for the Association
- Manages the day to day affairs of the Association including staff members and budgets
- Identifies issues pertinent to the Attraction and Tourism industry and to Association members and recommends to the ManCom the Association's position on such issues
- Represents members' interests in lobbying Government at national, regional and local levels as required, to communicate the Association's views in an effective manner
- Sits on Tourism & Leisure Industry forums to represent the Associations' views
- Provides guidance and support to members on an individual and sector basis across a wide variety of commercial, Health & Safety and industry related matters

CLOSING DATE FOR APPLICATIONS: 31 MAY

THE PERSON

The ideal person will have either several years experience in a senior position within the Commercial Attractions Industry or at least 3 years previous experience as the Chief Executive of a major, commercially focussed trade association of similar or larger size to BALPPA. Ideally they will also have experience of dealing with Public Authorities & Regulatory Bodies

Personal competencies will include:

- Strategic thinking
- Business Planning and budgeting
- Strong leadership and presence
- Effective communication skills, both verbal and written
- Confidence in dealing with people at all levels
- Excellent administrative skills
- A 'hands-on' approach and effective personal organisation
- Ability to work with a small support team and an involving and participative approach
- Flexibility and adaptability
- PC literacy (Word Processing, Spreadsheets, Presentation software, Email)

APPLICATIONS IN WRITING MARKED 'PRIVATE & CONFIDENTIAL':

By post to: The Chairman, BALPPA, Suite 12, 37 Tanner St., London SE1 3LF Or by email to: hannah@balppa.org

leisure opportunities joblink

Book a joblink with us and we'll put your logo and company name on every page of the Leisure Opportunities website www.leisureopportunities.co.uk

This advert will have a hyperlink to your website, where you can list all the job vacancies in your company.



Go to www.leisureopportunities.co.uk and click on the link to see the latest jobs from...



TO BOOK Call: +44 1462 471747
and start getting applications for your jobs IMMEDIATELY!

leisure-kit.net

The website, email and search engine for leisure buyers

beauty

fitness

fun

gaming

golf

green

hospitality

leisure

museum

spa

sport

water



Visit leisure-kit.net for the latest news about products and services for the leisure industry.

To advertise your product and reach over 20,000 leisure buyers call now on +44 (0)1462 431385 or email leisure-kit@leisuremedia.com

subscribe online at www.leisuresubs.com
or call +44 (0)1462 431385

£5m Doncaster plans submitted

PETE HAYMAN

St Modwen has submitted a planning application for the £5m redevelopment of the former Tyco Electronics factory site on Wheatley Hall Road, Doncaster.

The proposals have been drawn up in partnership with Cooper Lighting, which shared the site with Tyco and continues to operate, and will feature a Goals Soccer Centre football facility. A family-friendly pub and a number of potential roadside and retail uses could also be included.

Stephen Prosser, regional director at St Modwen, said: "We have spent some considerable time consulting with Doncaster Council and Cooper Lighting in order to go forward with the proposals.



A Goals Soccer Centre is at the centre of the plans for the industrial site

"Our over-riding aim has been to ensure that Cooper Lighting's long term future is secured and that a significant number of jobs are maintained on this vital site for Doncaster."

Rank: Guoco Group offer 'undervalues' business

PETE HAYMAN

Rank Group has advised its shareholders to reject a mandatory takeover bid from Hong Kong-based Guoco Group.

A cash offer for the bingo hall and casino operator was triggered after Guoco Group

raised its shareholding in the UK-based company to nearly 41 per cent.

In a statement, Rank Group's board said that it had considered the offer – valued at nearly £586m – but has recommended that it "significantly undervalues" the business.

£35m Weston development approved

PETE HAYMAN

McLaren Property and Life Property have been given the green light to move forward with a £35m leisure-led mixed-use development in the heart of Weston-super-Mare.

North Somerset Council approved the joint venture's plans for Dolphin Square, which will see a 1960s shopping precinct replaced with a 250,000sq ft (23,226sq m) scheme.

An eight-screen Vue cinema and an Anytime Fitness health club are proposed, along with a 20-lane indoor bowling centre to be run by First Bowl. Nando's; Prezzo; and Harvester have signed up to operate restaurants as part of the scheme, while a 112-room Premier Inn is earmarked for an adjacent site.

The scheme is due for completion in May 2013, while work on the hotel element is set to start in June and will open in June next year.



A number of leisure operators have already signed up

Life Property's Simon Berry said: "Following the completion of the new Grand Pier and larger numbers of tourists, there is an additional £350m of spending in the town, which is reflected in the number of national operators that have already signed up."

- ACE +44 (0)1669 631 210
www.acenterprises.org.uk
- Arts & Business +44 (0)20 7378 8143
www.aandb.org.uk
- ALVA +44 (0)20 7222 1728
www.alva.org.uk
- Arts Council +44 (0)20 7333 0100
www.artscouncil.org.uk
- ASVA +44 (0)1786 475152
www.asva.co.uk
- BALPPA +44 (0)20 7403 4455
www.balppa.org
- BHA +44 (0)845 880 7744
www.bha-online.org.uk
- BICM +44 (0)845 217 1811
www.bicm.co.uk
- BISL +44 (0)20 8780 2377
www.bisl.org
- CCPR +44 (0)20 7976 3900
www.ccpr.org.uk
- CMAE +44 (0)1334 460 850
www.cmaeurope.org
- Countryside Agency +44 (0)1242 521381
www.countryside.gov.uk
- CPRE +44 (0)20 7981 2800
www.cpre.org.uk
- English Heritage +44 (0)870 333 1181
www.english-heritage.org.uk
- FSPA +44 (0)2476 414999
www.sportsandplay.com
- FIA +44 (0)20 7420 8560
www.fia.org.uk
- HHA +44 (0)20 7259 5688
www.hha.org.uk
- IAAPA +1 703 836 4800
www.iaapa.org
- IEAP +44 (0)1403 265 988
www.ieap.co.uk
- Institute of Hospitality +44 (0)20 8661 4900
www.instituteofhospitality.org.uk
- ISPAL +44 (0)845 603 8734
www.ispal.org.uk
- LPF +44 (0)1462 471932
www.leisureprop.com
- LMCA +44 (0)1278 436910
www.lmca.info
- MLA +44 (0)20 7273 1444
www.mla.gov.uk
- NPFA +44 (0)20 7833 5360
www.playing-fields.com
- People 1st +44 (0)870 060 2550
www.people1st.co.uk
- REPs +44 (0)20 8686 6464
www.exerciseregister.org
- SAPCA +44 (0)24 7641 6316
www.sapca.org.uk
- Sports Aid +44 (0)20 7273 1975
www.sportsaid.org.uk
- Sport England +44 (0)8458 508 508
www.sportengland.org
- Springboard +44 (0)20 7497 8654
www.springboarduk.org.uk
- SkillsActive +44 (0)20 7632 2000
www.skillsactive.com
- Tourism Management Institute +44 (0)1926 641506
www.tmi.org.uk
- Tourism Society +44 (0)20 8661 4636
www.tourismsociety.org
- VisitBritain +44 (0)20 7578 1000
www.visitbritain.com
- World Leisure +1 250 497 6578
www.worldleisure.org