

leisureopportunities

31 MAY – 13 JUNE 2011 ISSUE 555

Daily news & jobs: www.leisureopportunities.co.uk

Surrey Canal plans moves forward

PETE HAYMAN

Plans for a major new sports complex in Lewisham, South London, have moved forward with the formation of a new foundation to oversee the delivery of the project.

Former transport minister and mayoral candidate Steve Norris will chair the Surrey Canal Sports Foundation, which will ensure long-term sports provision for the site.

A regional centre of sporting excellence – Surrey Canal: London's Sporting Village – is at the heart of plans drawn up by Studio Egret West.

Renewal is leading the project and is working with Sport England to secure financial support through the Iconic Facilities Fund.

Renewal director Mark Taylor said: "The appointment of Steve Norris and our partnership with Sport England highlight the



The home of Millwall Football Club is situated at the centre of the site

calibre of our proposals. We hope to use the potential investment from Sport England as a springboard for gathering the additional funds needed to deliver this very special facility."



IMAGE: HEPWORTH WAKEFIELD

David Chipperfield was behind the venue's design

£35m Hepworth Gallery officially opens its doors

PETE HAYMAN

Hepworth Wakefield – one of the largest purpose-built art attractions to open in the UK for around 50 years – has welcomed its first public visitors in West Yorkshire.

Designed by David Chipperfield Architects, the £35m gallery is run by an independent trust and celebrates the work of local sculptor Barbara Hepworth.

In addition to the 10 galleries and learning studios, Hepworth Wakefield features an archive; an auditorium; a shop; a café; a bar with outdoor terrace; and a play area.

London River Park plans unveiled

PETE HAYMAN

London mayor Boris Johnson has announced that up to £60m has been secured towards a new 1km (0.6-mile) floating promenade along the north bank of the Thames.

International design practice Gensler has drawn up designs for London River Park, which is to be financed by Venus Group of Singapore. A Memorandum of Understanding has been signed by Gensler and the mayor, which will see the capital benefit from 30 per cent of the project's net revenues.

Subject to planning permission, the 12m (39.4ft)-wide pontoon is to run parallel to the existing pathways between Blackfriars Bridge



IMAGE: GENSLER

The floating promenade is due to open next summer

and Customs House. Eight themed pavilions will be situated along the route to showcase London and host events.

The project is due for completion next summer, with Mace also working on the scheme.

Sported to launch in three new regions

TOM WALKER

Community sports charity Sported has announced that it is to launch in three new regions this July.

Regional managers have been appointed to help support initiatives in the North West, the North East and the East of England, with the latest additions increasing the number of regions in which it operates to nine.

Sported provides support to community sport organisations that work with young people in disadvantaged areas by offering business resources and financial assistance.

GET
LEISURE
OPPS

Magazine sign up at
leisureopportunities.co.uk/subs

Job board live job updates
leisureopportunities.co.uk

PDF for iPad, Kindle & smart phone
leisureopportunities.co.uk/pdf

Ezine sign up for weekly updates,
leisureopportunities.co.uk/ezine

Online on digital turning pages
leisureopportunities.co.uk/digital

Instant sign up for instant alerts,
leisureopportunities.co.uk/instant

Twitter follow us:
[@leisureopps](https://twitter.com/leisureopps) [@leisureoppsjobs](https://twitter.com/leisureoppsjobs)

RSS sign up for job & news feeds
leisureopportunities.co.uk/rss

The Leisure Media Company
Portmill House, Portmill Lane,
Hitchin, Herts SG5 1DJ, UK
Tel: +44 (0)1462 431385
Fax: +44 (0)1462 433909
e-mail: please use contacts'
fullname@leisuremedia.com

Subscriptions

Denise Gildea 01462 471930
subs@leisuremedia.com

Editor

Liz Terry 01462 431385

Managing Editor

Tom Walker 01462 471934

Journalist

Pete Hayman 01462 471938

Design

Ed Gallagher 01905 20198

Internet

Dean Fox 01462 471900

Tim Nash 01462 471917

Account Managers

Recruitment, training, tenders

Paul Thorman 01462 471904

Simon Hinksman 01462 471905

Sarah Gibbs 01462 471908

Property desk

Simon Hinksman 01462 471905

Spa Opportunities & business

development, attractions and museums

Annie Lovell 01462 471907

Financial Controller

Sue Davis 01395 519398

Financial Administrator

Denise Gildea 01462 471930

Circulation Manager

Michael Emmerson 01462 471932

Subscribe to Leisure Opportunities,

Online: www.leisuresubs.com

Email: subs@leisuremedia.com

Tel: +44 (0)1462 471913

Annual subscription rates are UK £31,

Europe £41, Rest of world £62, students UK £16.

Leisure Opportunities is published fortnightly by The Leisure Media Company Limited, Portmill House, Portmill Lane, Hitchin, Herts SG5 1DJ, UK and is distributed in the USA by SPP, 75 Aberdeen Road, Emigsville, PA 17318-0437. Periodicals postage paid @ Manchester, PA POSTMASTER Send US address changes to Leisure Opportunities, c/o PO Box 437, Emigsville, PA 17318-0437. The views expressed in print are those of the author and do not necessarily represent those of the publisher The Leisure Media Company Limited. All rights reserved. No part of this publication may be reproduced, stored in a retrieval system or transmitted in any form or by means, electronic, mechanical, photocopying, recorded or otherwise without the prior permission of the copyright holder. Printed by Warners Midland plc. ©The Leisure Media Company Limited 2011 ISSN 0952/8210

SPORT

Think tank questions 2012 pledge

PETE HAYMAN

An independent think tank has raised questions over whether next summer's Olympic and Paralympic Games will deliver any lasting benefits to the UK's poorest young people.

In a new report, the Centre for Social Justice (CSJ) said that the commitment to ensuring a sporting legacy from the event will be a "highly effective sales pitch that was never fully realised".

The *More than a Game: Harnessing the power of sport to transform the lives of disadvantaged young people* study includes what the CSJ calls flaws in official plans to increase participation.

According to the report, there is no clear link between national sporting success and growth in activity, while many popular school sports will not feature at the Games.



IMAGE: ODA

The CSJ has questioned if the Games will benefit the UK's poorest kids

It also criticises plans to invest £135m of Lottery funding in the Places People Play scheme. The report said: "The scale of the challenge that the Olympic organisers have set themselves is too high for the relatively limited amounts of funding and the programmes that have been promised, to deliver successfully."

DC Leisure in line to deliver Gosport scheme

PETE HAYMAN

DC Leisure has been announced as Gosport Borough Council's preferred bidder to build and run a new leisure complex for the town.

Gosport Leisure Park will be located on the site of the existing Holbrook Recreation

Centre, with facilities to include a 25m swimming pool and a learner pool.

A 70-station gym; a sports hall; and a dance studio will also be among indoor facilities, with one seven-a-side and seven five-a-side floodlit artificial pitches also proposed.

June launch for £18.5m Billingham Forum

PETE HAYMAN

Stockton-on-Tees Borough Council and leisure operator Tees Active have announced that Billingham Forum is to reopen on 3 June, following an £18.5m overhaul.

Morgan Sindall, the scheme's main contractor, completed work on site at the start of May, which has enabled preparations to start ahead of its reopening.

Facilities at the Devereux Architects-designed Billingham Forum include a six-lane, 25m swimming pool, with an additional training pool and the retained learner pool.

Refurbished changing rooms and spectator areas; an extended gym to accommodate 70 stations; a rejuvenated ice arena; and a new-look



Billingham Forum's ice arena has been revitalised as part of the project

two-lane bowls are also included. Elsewhere, the four-court sports hall and squash courts have been upgraded and structural improvements made to the theatre area.

LOCOG unveils Torch Relay route

PETE HAYMAN

Nearly 75 locations across the UK have been revealed as forming part of the route for next summer's Olympic Torch Relay by the organisers of the 2012 Games.

The itinerary – unveiled by the London Organising Committee of the Olympic Games and Paralympic Games (LOCOG) – will also incorporate visits to the UK's six island territories.

A 70-day tour presented by Coca-Cola, Lloyds TSB and Samsung is scheduled to kick-off once the Olympic Flame arrives from Greece on 18 May 2012.

The route will start at Land's End, Cornwall, on 19 May and will move through Devon into South Wales within the first week. The relay will eventually end in London in late July. The itinerary will ensure that Guernsey, Jersey, the



The Olympic Torch Relay route will commence in Land's End, Cornwall

Isle of Man, the Shetland Islands, the Orkney Islands and the Isle of Lewis are also included in the Olympic Torch celebrations.

Meanwhile, LOCOG has also confirmed that discussions are underway between "relevant parties" with a view to including Dublin, Ireland, in the Olympic Flame's itinerary.

£23m Dagenham facility opens its doors

PETE HAYMAN

A new £23m leisure centre being built in Dagenham, East London, by the London Borough of Barking and Dagenham (LBBD) has opened to the public.

Becontree Heath Leisure Centre has been designed by S&P Architects and built by construction firm, the Leadbitter Group.

Facilities include a 95-station fitness suite and three workout studios with purpose-built changing areas, as well as 25m swimming pool and 13m learner pool.

A soft play area; a four-court sports hall; and a café are also included as part of the complex, which replaces the Wood Lane Sports Centre and Dagenham Pool facilities.



S&P Architects designed the new £23m Becontree Heath Leisure Centre

LBBD's cabinet member for leisure and the arts, Bert Collins, said: "After months of planning and building work, it is fantastic to be able to welcome the public."

FA to abstain in FIFA presidency vote

PETE HAYMAN

The Football Association (FA) will be abstaining in the forthcoming vote for the presidency of world body FIFA.

FA chair David Bernstein said its board had agreed to the proposal due to "a range of issues

both recent and current" that prevented it from supporting either candidate.

Incumbent president Sepp Blatter is competing against challenger Mohamed Bin Hammam for the presidency, with the vote due to take place on 1 June.

£13.5m Sparkhill pool scheme moves forward

PETE HAYMAN

Birmingham City Council's (BCC) cabinet has agreed to move forward with proposals for a new £13.5m swimming pool and leisure centre in the Sparkhill area.

Members backed the launch of a competitive procurement process for the design, build and management of the new facility – part of the council's Pool Strategy.

Facilities will include a 25m, six-lane pool; a 13m x 8m learner pool; a 150sq m (1,615sq ft) dance studio; a 70-station adult fitness suite; and a 20-station junior gym.



Work has started on site of the swimming centre

Work starts on £8.1m Tipton swimming pool

PETE HAYMAN

Sandwell Council has announced that work has now commenced at the site of a new £8.1m swimming pool complex to be developed in Tipton, West Midlands.

Work is being carried out to create a new access road to the new complex site from Alexandra Road and Thursfield Road. The project is to be completed by spring 2013.

The venue – designed by Sandwell Urban Design Architects, the council's in-house service – will feature a 25m, six-lane swimming pool and a learner pool.

Big Splash swimming campaign launches

PETE HAYMAN

Big Splash, a campaign designed to increase the number of people swimming and boost the nation's health, has been launched by British Swimming and the BBC.

The initiative aims to encourage the UK's existing 13 million swimmers and inspire more to take up the sport, as well as helping to improve water safety and save lives.

A fifth of adults are currently unable to swim, while a fifth of children leave primary school without being able to swim – statistics that Big Splash aims to change.

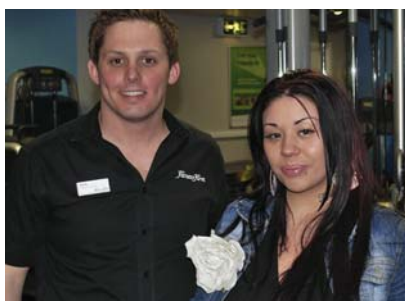
New-look Mid Suffolk leisure centre unveiled

PETE HAYMAN

Everyone Active and Mid Suffolk District Council have announced the completion of work on a £500,000 expansion of facilities at Stradbroke Leisure Centre.

The facility, which previously only offered a swimming pool, has nearly doubled in size as a result of the project and boasts a new 176sq m (1,894sq ft) fitness suite.

Equipped by Precor, the 33-station gym comprises a number of cardiovascular and strength machines – including Concept 2 rowers, free weights and crosstrainers.



Buena (right) with general manager Jonny Dean

Fitness First unveils new-look Uxbridge site

PETE HAYMAN

Privately-owned health club operator Fitness First has officially reopened its Uxbridge site, following the completion of an extensive £250,000 refurbishment.

A new freestyle area will allow members to try the latest trends and equipment, while a new spin studio has also been provided to cater for growing demand for cycle-based training.

Mutya Buena, a former member of pop music group Sugababes, helped to open the new-look Fitness First Uxbridge.

High Peak BC to unveil new-look facilities

PETE HAYMAN

High Peak Borough Council (HPBC) is on track to open new-look facilities at Glossop and New Mills Leisure Centres in June, following a £600,000 refurbishment.

The council has worked in partnership with operator DC Leisure to deliver improvements at the two venues, which will offer new gyms and exercise studios.

Glossop Leisure Centre's new-look fitness facilities are due to open in early June, while improvements at New Mills will be completed towards the end of the month.

Guidelines to assist GP referrals

TOM WALKER

The Fitness Industry Association (FIA) and the Chartered Society of Physiotherapy (CSP) have published a new set of guidelines, aimed at helping GPs with their exercise referrals.

The new guidelines are based on the findings of a joint working party between FIA and CSP and have been designed to help GPs decide whether a patient's schedule and rehabilitation should be managed by a physiotherapist or a fitness instructor.

Ann Green, chair of CSP said: "In the past there may have been some confusion as to what roles physiotherapists and fitness instructors can play in the process.

"We believe these guidelines will be extremely useful for GPs and other health professionals as we all tackle this critical issue."



The guidance is based on the findings of the FIA and CSP working party

The guidance suggests that a physiotherapist is best placed to manage exercise programmes where pain or decreased function limits activity and a fitness instructor should manage exercise programmes where the condition is under reasonable control and where further progress in function and fitness is likely.

New Stars Gym launches in Battersea

PETE HAYMAN

Stars Gym, a new independently-owned facility with a focus on mixed martial arts (MMA), has opened its doors at the Albion Riverside, Battersea, London.

A boxing ring, a cage and a range of MMA equipment will be on offer at the venue, with boxing, Brazilian Jiu Jitsu and Muay Thai among the disciplines to be taught.

The instructors at the new Stars Gym will feature ring sport specialist Mati Parks and current UK and European Thai boxing champion Alexis Rufus, as well as boxing coach Scott Poulton.

Other facilities will comprise a weights area and two studios to be used for Pilates and yoga classes, while a dedicated treatment room will



The new Stars Gym in Battersea will have a focus on mixed martial arts

provide physiotherapy and rehabilitation services. Beauty services and saunas will also be available, with a number of outdoor classes set to be held in nearby Battersea Park or along the banks of the River Thames.

£80,000 gym extension for Swansea's LC

PETE HAYMAN

Swansea's LC leisure complex has unveiled plans to carry out an £80,000 extension of the gym facilities to meet growing demand.

A new standalone spin studio and a new free weights area are proposed as part of the plans,

with the latter to be equipped by Technogym and located on the existing gym floor.

Meanwhile, the centre's new spin studio is to be equipped with spin bikes and tempo lighting to help create a "high-octane indoor cycling experience" for users.

✓ No artificial colours, flavours or preservatives

REAL JUICY PROFITS

Rowntrees®

New

Very Berry Jellies

50%
Fruit Juice

50%
Fruit Juice

New
Rowntrees®
Sour Faces™

- ROWNTREE'S® brand is in growth by 8%, **worth £88m***

 **Nestlé**
PROFESSIONAL

Creative Food & Beverage Solutions

Stock up now for juicy profits!

For professional advice to grow your business, call 0800 742 842

* Source: IRI, Total Market, Value Sales, 52 w/e 1 Jan 11 ® Reg. Trademark of Société des Produits Nestlé S.A.

Study: Kids' strength 'is in decline'

PETE HAYMAN

A study has found that the measures of strength in UK children have fallen "dramatically" in the past decade.

Researchers from London Metropolitan University (LMU) and the University of Essex (UE) reported a 27 per cent drop in the number of sit-ups that a 10-year-old person could perform and a 26 per cent fall in arm strength.

The study – published in *Acta Paediatrica* – also said that one in ten could not support their own weight on a wall bar, although researchers said that the full extent of the decline could be unknown.

Dr Gavin Sandercock led the UE research team and said that many kids refused to try and hold their weight on the wall bar. "This is probably due to changes in physical activity patterns among English 10-year-olds such as



IMAGE: IMAGEGAM/SHUTTERSTOCK.COM

The team found that one in ten kids could not support their own weight

taking part less in activities like rope climbing in PE and tree climbing for fun," he said.

Study author Daniel Cohen of LMU added: "Our findings underline the importance of including the assessment of muscular fitness in recommendations for the monitoring of health-related fitness in children."

NLL reveals impact of leisure investment

PETE HAYMAN

A new report from North Lanarkshire Leisure (NLL) has revealed that its £10m investment in sports and leisure facilities has generated £41m for the local economy.

The *Social Return on Investment Report* – compiled by Baker Tilly – has examined the benefits of NLL's range of fitness, health and social inclusion programmes.

NLL's investment raised £25.5m in savings to the NHS and wider economy and has delivered £1.9m of benefits through its swimming initiative, while an NHS programme has contributed £6.4m.

Blane Dodds, chief executive of NLL, said: "North Lanarkshire is one of the UK's most challenging areas in terms of health problems,



NLL runs sites including the £32m Ravenscraig Regional Sports Facility

many of them relating to obesity, poor diet and low levels of participation in exercise.

"It is against this backdrop that we set out to deliver real benefits to our local community through a range of progressive initiatives."

Pure Gym to launch new Leicester club

PETE HAYMAN

Pure Gym is to open a new site in Leicester in June, following work to refurbish the city's former Sturgis Land Rover garage.

The garage site is to be transformed into the chain's latest location, which will feature

200 pieces of equipment such as the TRX Suspension Trainer and Bodycore platforms.

Lance Armstrong's LIVESTRONG spin bikes – supplied by Matrix – will also form part of the new Pure Gym, along with more than 40 exercise classes.

Fife leisure trust plans £900,000 investment

PETE HAYMAN

Fife Sports and Leisure Trust (FSLT) has announced plans to invest £900,000 in upgrading facilities and services across its portfolio of 13 venues over the next year.

The trust is to spend £390,000 on new Technogym equipment at Duloch and Carnegie centres, following a similar project at seven other gyms in 2010.

Meanwhile, further investment is planned in the development of programmes across the 13 facilities; IT upgrades; and new self-service terminals at the Carnegie facility.



The new multi-sensory equipment at the centre

Sports centre invests in multi-sensory room

TOM WALKER

Concord Sports Centre in Shiregreen, Sheffield, has invested in a multi-sensory facility in which disabled children and adults can learn different colours and sounds, relax and stimulate their senses.

The introduction of the rooms is part of Concord's strategy to cater better for disabled customers. Other initiatives include providing rebound therapy on trampolines for people with mobility problems and having Changing Places dressing rooms designed for disabled customers.

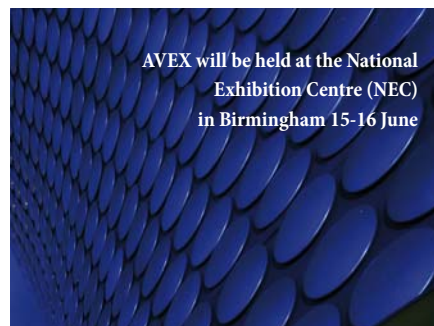
QHotels unveils new fitness offer in Hampshire

TOM WALKER

Hotel operator QHotels has completed an upgrade of the fitness offer at its Hampshire Court hotel in Basingstoke.

Equipment supplier Pulse has installed 67 stations at the hotel, following a £220,000 revamp that featured an overhaul of the gym and one of the three studios.

The gym boasts Pulse's Fusion cv range featuring self powered technology that motivates the user to power the machines inbuilt audio visual package which includes an iPod docking station and TV screen.



AVEX will be held at the National Exhibition Centre (NEC) in Birmingham 15-16 June



Indisputably all leisure managers need to identify ways in which they can maximise their incomes from their customers by providing new facilities which will enhance enjoyment and encourage revisits.

A trip to AVEX at the NEC, Birmingham on Wednesday 15 and Thursday 16 June will provide the perfect opportunity to see what vending and water dispense have to offer to the leisure market.

Of course vending is the ideal way to deliver chilled soft drinks, fruit juices and flavoured water to your customers – not just when the catering outlets are closed.

Talk to vending operators at AVEX and they will be happy to conduct an audit of your premises and identify other places where a strategically placed bank of vending machines can really drive revenue throughout opening hours. And don't forget that maintenance crews and cleaners also need refreshment and will use the machines when the venue is closed.

Displaying your products

Hot drinks, cold drinks, confectionery, savoury snacks and sandwiches are familiar vending offerings but the range doesn't end there. Vending can be used as a secure and unmanned way to sell high priced items – perhaps books of car park vouchers for

members who attend a gym regularly and don't always want to have to worry about bringing cash.

And then there is the range of specialised sports and exercise equipment. Most places don't have room for an organised shop and end up with a ramshackle pile behind the reception desk. Goggles, swimming caps, baby swim nappies, even towels beautifully organised and displayed within a glass fronted vending machine will not only be safer they will generate more sales and thus potential profit.

Payment solutions

Remember too that payment systems – using coin, notes, cards – and cashless systems can be set up so that you can, for example, offer one discounted price to regular members and the standard price to the casual visitor.

Visiting AVEX provides the perfect opportunity to try out different options and to meet in one place on one day the machine manufacturers, payment system suppliers and operators who can help you to use vending to benefit your bottom line.

Individual conversations with exhibitors on their stands and participation in the FREE seminars, which are taking place within the exhibition hall throughout the exhibition, will help you add value to your business.

On each of the two days of the exhibition these FREE seminars will feature speakers from the Royal Mint and the European Vending Association as well as a dedicated sessions on water filters and the commercial benefits of being green plus individual exhibitors taking the opportunity to highlight new vending systems and applications.

For more information about AVEX; including a full list of exhibitors, transport, hotel details and to register for FREE entry and a FREE catalogue visit www.avex2011.co.uk and start to plan your visit to AVEX 2011. AVEX 2011, organised by the Automatic Vending Association, contact Fiona@avex2011.co.uk 020 8661 1112



ATTRACTIONS & MUSEUMS

New dinosaur exhibition unveiled at Thinktank

TOM WALKER

A new exhibition exploring the dietary habits of dinosaurs is now open at Thinktank, Birmingham Science Museum.

The DINO JAWS Exhibition includes life-size moving models of dinosaurs, fossil evidence, interactive touch-screen displays and a virtual dinosaur dig.

Developed by London's Natural History Museum, the exhibition will offer visitors the opportunity to learn how comparing modern animals with extinct ones is vital for understanding prehistoric life.



David Hasselhoff helped mark the park's launch

£10.3m Nickelodeon Land opens in Blackpool

PETE HAYMAN

Nickelodeon Land, a new £10.3m attraction at Blackpool Pleasure Beach amusement park, has been officially unveiled by television personality David Hasselhoff.

The 6-acre (2.4-hectare) park is based on a number of popular Nickelodeon characters and shows, such as *Dora the Explorer* and *SpongeBob SquarePants*.

Among the rides and attractions designed to cater for the whole family is the Avatar Airbender, the Nickelodeon Streak roller-coaster and the Rugrats Lost River Ride.

April holidays boosts Historic Scotland visits

PETE HAYMAN

Figures released by Historic Scotland have revealed a 29 per cent increase in the number of people visiting heritage attractions during the Royal Wedding weekend.

It compares with the same period last year, with visitor numbers on 29 April – the day of the wedding – up 45 per cent against figures for the same day in 2010.

Meanwhile, the number of people who visited Historic Scotland-operated sites on 30 April was up by 94 per cent, when compared with the same day last year.

Ben 10 coaster for Drayton Manor

TOM WALKER

Staffordshire's Drayton Manor Theme Park has opened its newest attraction – a themed junior coaster supplied by Dutch company Vekoma.

The ride is a smaller variation on Vekoma's boomerang design and has been themed on the *Ben 10* character. The design allows it to have a small footprint – it is located on a 60m x 22.5m (196.9ft x 73.8ft) plot in the Aerial Park section of the park – while enabling top speeds of 55kph (34.2mph) on a 180m (590.6ft)-long track which rises to 20.5m (67.3ft).

Guests will also be immersed in the storyline as they enter the main queue line area for the ride. Interactive screens provide information on the show and opportunities to play games while in the queuing area, as Asmuth also speaks to guests on TV monitors.



Drayton Manor's new themed family coaster was supplied by Vekoma

The design elements of the attraction were carried out by UK based Space Leisure, who also provided the audio effects and the touch screen interactives within the queue line area, while theming specialist Meticulous carried out all the theming work within the queuing area, following Space Leisure's designs.

National Heritage List for England launched

PETE HAYMAN

English Heritage has launched the new National Heritage List for England – a publicly-accessible online database of 400,000 listed properties.

Members of the public can now use the resource and search for heritage sites by locality or by grade of listing, which covers gardens, parks, battlefields and monuments.

It comes as English Heritage confirmed its programme for 2011-12 to 2014-15, which will be guided by the *National Heritage Protection Plan* to help shape the organisation's future work.

Among some of the historic environment agency's priorities over the next four years will be a focus on marine and coastal heritage and the protection of 20th century heritage.



IMAGE: ROANTRUM

An online database of English listed properties has now been launched

Meanwhile, English Heritage has also launched another internet-based resource – Portico – in a bid to help boost the public's understanding of English history through its national collection of sites.

£520,800 HLF funding for Much Wenlock Museum

PETE HAYMAN

Shropshire's Much Wenlock Museum is to be revamped after the scheme was handed a confirmed Heritage Lottery Fund (HLF) grant.

It is hoped the project will help the attraction to mark the town's role in the development of

the modern Olympic movement, with collections and facilities to be given an overhaul.

The museum includes the archives of William Penny Brookes, who is seen as a pioneer of the modern Games and founded the Wenlock Olympian Society in 1850.

Third Space spa for London hotel

TOM WALKER

Third Space, the independent UK-based health club operator, has launched its second site – at the The Marylebone Hotel in central London.

The club has rented out a 15,000sq ft (1,400sq m) space at the Doyle Collection-owned hotel. According to Third Space chief executive Eric Dunmore the club cost “around £2m” to set up.

Facilities include an 18m ozone-treated swimming pool and Third Space’s first full service spa – The spa@ThirdSpace, featuring a sauna and steamroom and a treatment menu supplied by Payot.

Meanwhile, the gym has been equipped with Technogym equipment and also includes a free weights studio and Powerplate Zone as well as a group exercise room offering activities such as combat, dance, Pilates and yoga.



The spa@ThirdSpace includes a large ozone-treated swimming pool

The club also houses a two-storey training concept called ‘Retro Gym’, a concept that fuses modern functional techniques with traditional equipment including ‘old-school favourites’.

The opening is part of Third Space’s expansion plans which include a number of new sites across the capital.

Knowsley venue to open in September

PETE HAYMAN

Knowsley Leisure and Culture Park, a new £16.1m multi-purpose complex being developed in Huyton, Merseyside, is scheduled to open its doors to the public on 26 September.

Designed by Broadway Malyan, the 6,600sq m (71,042sq ft) complex will feature a wet spa area with steamroom, sauna and whirlpool, as well as treatment rooms and a relaxation area.

Two swimming pools; a six-court sports hall; a fitness suite with up to 120 stations; squash courts; dance studios; and a 400m outdoor velodrome are among planned sports facilities. A BMX track and an adult activity base – offering a range of activities for disabled visitors – are also planned.



The £16.1m Knowsley Leisure and Culture Park is nearing completion

Knowsley Council cabinet member for leisure, community and culture Eddie Connor said: “It will provide a wide range of new and exciting activities for everyone to enjoy.”

Details of Buxton spa event revealed

TOM WALKER

Details have been revealed for the inaugural Buxton Spa Forum, which is being organised by the University of Derby.

The theme of the two-day event, which will be held on 23-24 June – the dates of the

cancelled BISA Annual Conference – at the University of Derby campus in Buxton, will be Spa Responsibility and Sustainability.

Keynote sessions will include speeches by Elemis’ Noella Gabriel and Andrew Gibson, group director of spas at Mandarin Oriental.

Center Parcs introduces new spa accommodation

TOM WALKER

UK-based Center Parcs is to add a new form of accommodation to its Elveden Forest park in Suffolk.

Adjacent to the park’s Aqua Sana spa, guests staying at the new Spa Suites will be able to enjoy private access to the spa.

The accommodation has a large open-plan living space and features a fire-place, twin beds or double bed and private balcony or terrace. To fit in with its woodland surroundings, the interior of the new style of accommodation will have natural forest tones throughout, with large windows and a terrace or balcony for guests to enjoy the views.

Aqua Sana Spas are found at each one of the Center Parcs Villages – Whinfell Forest in Cumbria; Sherwood Forest in Nottinghamshire; Elveden Forest in Suffolk; and Longleat Forest in Wiltshire.



A second pool is among planned new additions

New owners unveil vision for The Malvern

PETE HAYMAN

Huw Watson and Helen Rogers, the new owners of The Malvern hotel, spa and health club in Worcestershire, have announced plans to further grow the business.

The pair had been overseeing the running of The Malvern since September 2010 and have introduced new spa treatments, branding initiatives and special events.

A second pool and 30 additional rooms are now to be added as part of plans for the redevelopment of the property, which will be carried out over the next three years.

The Malvern currently features a spa with four heat experiences, as well as a 20m hydrotherapy pool. Relaxation areas, an ice fountain and a bucket (drench) shower are also on offer at the spa, which uses ESPA, REN, Jessica Nails and CACI products.

The industry is key to healthy eating habits



UFI IBRAHIM

is chief executive of the British Hospitality Association

Nearly a fifth of all food eaten in the UK is provided by the hospitality sector, which serves 8.3 billion meals per year in more than 250,000 outlets. Food sales are currently valued at more than £31bn per year. The industry is therefore at the heart of the nation's wellbeing.

The industry has already taken great strides to embrace the government's Responsibility Deal launched in March. The aim of the initiative is to reduce the use of salt and sugar and eliminate trans fats in dishes, as well as increasing the availability of healthy options and educating employees and consumers in healthy eating.

This was the main message of the BHA's recently-published report – *Health Works: a look inside eating-out* – that shows how far the industry has moved towards meeting the government's healthy eating goals.

It includes the results of a BHA survey covering 10,000 establishments, in which 80 per cent of respondents revealed that they were already offering lighter meals, salads and other low calorie options, while nine out of ten were committed to reducing salt in line with the Food Standards Agency 2012 targets and eliminating trans fats from menu items within the next 12 months.

But one problem facing the UK is growing obesity levels. One of the government's primary tools to tackle this is the Responsibility Deal in England. This voluntary scheme aims to encourage commercial companies and the public sector to develop core commitments and pledges for action on food, alcohol, behavioural change, physical activity and health at work.

The BHA supports a voluntary scheme in which those businesses that want to provide calorie information on their dishes are helped to do so. It is also backing members to provide clearly signposted healthy options and to monitor changes in consumer choices, sharing the findings.

But because behaviour change will not necessarily be achieved merely by providing calorie-counted dishes, it is perhaps more important for UK food service businesses to continue to offer consumers a wide range of healthy dining choices.

HOTELS

Maldron opens new Cardiff hotel

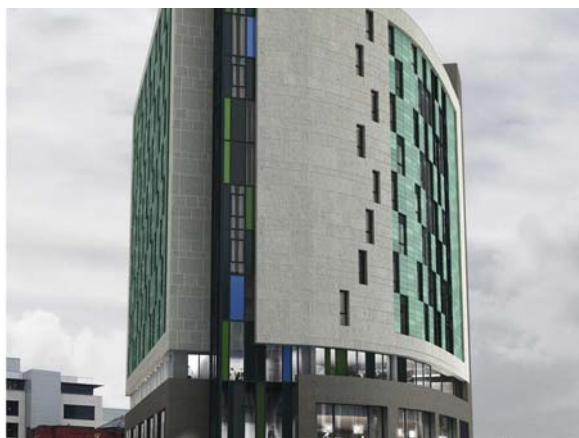
PETE HAYMAN

Ireland-based operator Maldron Hotels has expanded into the UK with the launch of a 216-room property in Cardiff – part of a wider scheme led by Rush Developments.

The new 12-storey hotel has been built on the site of the former Central Hotel and is located near Cardiff Central railway station.

Belfast-based White Ink Architects designed the £25m property, which was built by fellow Northern Ireland-based firm McAleer and Rushe. The project was funded by Cardiff's Julian Hodge Bank and will also feature retail or restaurant space on the ground floor.

Maldron – founded in 2007 by the former Jurys Doyle chief executive, Pat McCann – has confirmed its plans to further expand its presence in the UK in the long-term.



The new 32-storey Wyndham Hotel will be the tallest building in Wales

McCann, who also opened a Jurys Hotel in Cardiff in 1994, said: "Strong comparisons can be drawn between Cardiff and Dublin. It has a thriving leisure market at weekends and a strong corporate market during the week. The city offers huge potential, so it made sense for our first UK development to be there."

BHA publishes healthy eating report

TOM WALKER

The British Hospitality Association (BHA) has found that 80 per cent of the industry now offers healthy eating options on its menus.

In its *Health Works: a look inside eating out* report, the BHA also said that most are

taking action to reduce salt in line with the Food Standards Agency 2012 targets, with 90 per cent being "committed" to the goals.

BHA chief executive Ufi Ibrahim said that healthier options can boost competitiveness, as public awareness of healthy lifestyles grows.

Soft launch for Montcalm London City hotel

PETE HAYMAN

The Montcalm Group has completed the soft launch of its new hotel in the heart of London – The Montcalm London City at The Brewery – following an overhaul of a former brewery.

Housed in the Grade II-listed former Whitbread and Co premises, the hotel currently offers 100 rooms and will be officially unveiled at the end of September.

A further 135 rooms will be made available later this year, as well as a wellness centre using Elemis and Aqua de Palma products. The Chiswell Street Dining Rooms – a contemporary British restaurant and cocktail bar run by ETM – is now open, with a gastro pub to be added by September.



A Grade II-listed former brewery building houses the Montcalm hotel

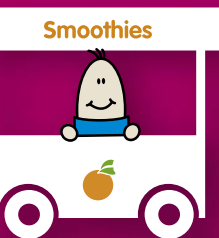
Dating back around 260 years, the original building was one of Britain's first purpose-built mass production breweries after Samuel Whitbread moved his operations to the site.

the freshest ideas and the latest lines in leisure

exhibit at



20-22 Sept 2011
NEC Birmingham

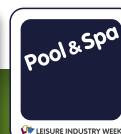


LEISURE INDUSTRY WEEK 20-22 September 2011 · NEC Birmingham

LIW provides an exclusive platform for suppliers and service providers across the Leisure Industry. Attracting 9580* trade visitors and boasting brand new initiatives and features for 2011, LIW offers you the perfect solution to your sales and marketing objectives.

LIW is the UK's leading and most influential trade show for out of home leisure businesses, with seven sectors each tailored to the specific needs of the communities we serve.

If you are looking to position yourself in front of senior operators from across the leisure industry, then contact Donna Oliver on 020 7955 3979 or donna.oliver@ubm.com for more information.



*ABC audited

www.liw.co.uk

ARTS & CULTURE

Manchester to premiere West End productions

PETE HAYMAN

Ambassador Theatre Group (ATG) – the owner of Manchester's Palace Theatre and Opera House – plans to premiere new productions in the city ahead of London.

The unveiling of Manchester Gets It First – ATG's commitment to bring new shows to the city – follows the successful launch of *Ghost: The Musical* at the Opera House.

Ghost: The Musical made its world debut in Manchester on 28 March as part of a seven-week spell and is now due to open at London's Piccadilly Theatre on 24 June.



IMAGE: NICK RUSSELL

The venue has undergone a major refurbishment

New-look arts centre opens in Cardiff Bay

PETE HAYMAN

Cardiff Bay's landmark Norwegian Church Arts Centre has officially reopened its doors to the public, following the completion of an extensive refurbishment programme.

A new terrace and extension to the coffee shop have been provided as part of the scheme, as well as a lifting platform to the first floor gallery and exhibition space.

Cardiff Council said the scheme had been supported by the Landfill Communities Fund and local authority partner Hordaland County Council in Norway.

New research uncovers Edinburgh Festivals impact

PETE HAYMAN

Edinburgh's 12 major arts and cultural festivals were worth £261m to the Scottish economy last year, according to a new report commissioned by Festivals Forum.

The *Edinburgh Festivals Impact Study* – compiled by BOP Consulting and shaped by 15,000 survey responses from a year-long period – examined the economic and social benefits of the events on the city.

More than four fifths of visitors said that the festivals were an important – if not the sole – reason for travelling to Scotland.

UK music tourism 'worth £864m'

PETE HAYMAN

UK Music has called for the development of a national live music tourism strategy after it was revealed that major concerts and festival are worth "at least" £864m each year.

Destination: Music is one of the first studies of its kind, exploring the impact of music events on the UK tourism sector, with events attracting at least 7.7 million people.

According to the study, 5 per cent of all music tourists come from overseas and contribute 18 per cent of total music tourist expenditure.

A national live music tourism strategy is among a number of recommendations now being made by UK Music in a bid to increase overseas music tourist numbers.

UK Music chief executive Feargal Sharkey said: "[The study's] message is crystal clear:



IMAGE: C FORD

The study found that 5 per cent of all music tourists come from abroad

music provides a huge boost to UK tourism, it drives growth, it sustains thousands of jobs across all regions and it enhances our lives."

Culture minister Ed Vaizey added: "This report demonstrates the world-wide reputation the UK music sector enjoys and the contribution it makes to our economy."

Topping out for Watford Colosseum

PETE HAYMAN

A topping out ceremony has taken place to celebrate the latest milestone in a £5.5m scheme to overhaul Watford Colosseum, Hertfordshire.

Work has included the construction of a two-storey, glass-fronted foyer, which houses

the venue's new café bar and the Forum restaurant, as well as a customer lift.

A revamped auditorium with retractable, loose and fitted seating for up to 1,400 guests and the installation of new sound and lighting systems are also included in the scheme.

Four museums vying for Art Fund Prize

PETE HAYMAN

Bath's Roman Baths Museum and the British Museum in London are among the four UK museums and galleries to be shortlisted for the £100,000 Art Fund Prize 2011.

The other two attractions to be confirmed as in the running are Alloway's new Robert Burns Birthplace Museum and the Polar Museum at the University of Cambridge.

Meanwhile, five sites have been shortlisted for the inaugural £10,000 Clore Award for Museum Learning.

Museums Sheffield: Weston Park; Portsmouth's National Museum of the Royal Navy; and South London Gallery are in contention for the provision of innovative and high quality learning activities.



IMAGE: ERIC POUHIER

The British Museum is one of four attractions shortlisted for the award

The Pitt Rivers Museum and Oxford University Museum of Natural History, Oxford and Tyne and Wear Archives and Museums have also been shortlisted.

easyJet issues APD warning

PETE HAYMAN

Tourist spending in the UK would drop by £475m a year if a hike in Air Passenger Duty (APD) is pursued, according to budget airline easyJet.

Under the plans, APD will increase from £12 to as much as £16 per person on flights of up to 2,000 miles, with the rates and number of tax bands on long haul flights reduced.

The carrier has published the findings of an independent report that explores how proposed changes to aviation taxes – announced in March – would have a negative impact.

Frontier Economics compiled the research, which found that the proposals will see a drop in the number of UK airline passenger numbers by 3 million per year.

The overall impact of the proposals to the UK's gross domestic product would be worth



IMAGE: KAMIRA/SHUTTERSTOCK.COM

easyJet said tourism spending in the UK will drop if APD is increased

£2.6m a year, with up to 77,000 jobs expected to be put at risk, according to the report.

easyJet CEO Carolyn McCall said: "This provides convincing evidence that the government should not impose further increases in APD on short haul flights and should rethink its policy on aviation taxation."

Cardiff reports growth in tourism numbers

PETE HAYMAN

New figures from Cardiff Council have found that visitor numbers to the city last year increased by a quarter to 18.3 million.

The Scarborough Tourism Economic Activity Monitor (STEAM) found that the first

full year of trading at the St David's Dewi Sant shopping centre had boosted the figures.

However, the study also revealed that visitor numbers had shown an increase compared with 2009, even when the impact of the shopping complex had been discounted.

Staycations worth £7.2bn to sector in 2011

PETE HAYMAN

Budget hotel chain Travelodge has published the findings of a new study, which has found that staycations are expected to be worth £7.2bn to the UK's tourism industry this year.

The company surveyed 5,000 adults as part of its research, with more than a third planning to just holiday in the UK this summer – up 10 per cent on last year.

Cornwall was identified as the most popular destination, with other locations in the top three comprising the Lake District (2nd) and Devon (3rd). The study also found that a third of UK residents plan to take a seaside holiday, with 25 per cent eyeing a city break. A further 22 per cent will take a rural holiday.



IMAGE: JIM CHAMPION

Cornwall has been named as the most popular staycation destination

Travelodge spokesperson Shakila Ahmed said: "More Britons are opting for a staycation break this year, which is great news for the British tourism industry."



leisure media
STUDIO

Industry-leading marketing and design services

With more than 30 years' experience, **leisure media studio** will work with you to create bespoke print and web solutions to power your marketing

- ▶ Web design
- ▶ Email marketing
- ▶ Contract publishing
- ▶ Graphic design
- ▶ Digital turning pages
- ▶ Image retouching
- ▶ Illustration
- ▶ Advertising design
- ▶ Direct mail
- ▶ Print

LET US QUOTE YOU

Contact Tim Nash
Tel +44 (0)1462 471917
timnash@leisuremedia.com



Peter Tudor is the OPLC's new director of venues

Legacy company appoints new director of venues

PETE HAYMAN

The Olympic Park Legacy Company (OPLC) has appointed Peter Tudor – former senior director of ticketing agency Ticketmaster – as its new director of venues.

During next summer's Games, Tudor will work with operators to analyse how the venues function during major events to help guide their future use.

"This is an extraordinary opportunity to take an unrivalled set of venues and turn them into a magnet for visitors, schools and community sport," he said.

UK cities and towns in line for HLF support

PETE HAYMAN

Seven city and town centres are in line to receive a share of £10m under the Townscape Heritage Initiative (THI) programme after receiving initial support.

The Heritage Lottery Fund (HLF) has earmarked funding towards projects that aim to help repair and preserve historic areas as part of wider regeneration plans.

HLF chief executive Carole Souter said: "We're determined to help regenerate areas that are currently struggling and in need of an injection of much-needed cash."

Neville 'to fund' new venue for Manchester United fans

PETE HAYMAN

Gary Neville, the former Manchester United Football Club (MUFC) player, has revealed plans to fund a new building for supporters near the club's Old Trafford stadium.

To be located adjacent to the Manchester Ship Canal off Sir Matt Busby Way, the facility is to be capable of accommodating up to 1,500 MUFC fans on match days.

Neville plans to use some of the proceeds from his testimonial match held on 24 May to help fund the venue, which could open ahead of the 2013-14 season.

Leisure projects awarded RIBA recognition

PETE HAYMAN

A number of leisure schemes have been included among the 97 UK and European projects to be named as winners of the 2011 Royal Institute of British Architects (RIBA) Awards.

The RIBA Awards are designed to recognise "architectural excellence" and comprised 89 properties in the UK and a further eight across the European Union.

Among the 2011 winners is the new £112.8m home for the Royal Shakespeare Company in Stratford-upon-Avon – designed by Bennetts Associates and opened late last year.

McManus Galleries in Dundee (Page Park Architects); Mostyn Gallery in Llandudno (Ellis Williams Architects); Marshland Discovery



The Royal Shakespeare Company's new home was recognised by RIBA

Zone, Purfleet, (Peter Beard LANDROOM) and Creswell Crags Museum and Education Centre, Derbyshire (OMI Architects) were also named as winners of this year's awards.

Next phase of Wembley City backed

PETE HAYMAN

Brent Council has resolved to approve plans for a 160,000sq m (1.7 million sq ft) mixed-use development at Wembley City in north west London.

Quintain Estates and Developments is behind the scheme, which is set to incorporate a 1-acre (0.4-hectare) public square; a multi-use games area; up to 20,000sq m (215,278sq ft) of hotel space; and 1,300 new homes.

Land along Olympic Way – the iconic route into Wembley Stadium – will be transformed

as part of the Wembley City north west development, which will also feature a new shopping street and will surround Brent Civic Centre.

Designed by Make Architects, the latest plans will complement Quintain's existing efforts to revitalise Wembley City, which will boast a new 361-room Hilton Hotel.



Land surrounding Wembley Stadium is to be transformed by Quintain

Quintain chief executive Adrian Wyatt said: "[This] reflects another important milestone in our major scheme at Wembley."

Ben Giddens, the group's commercial development director, added: "The activity on site already demonstrates Quintain's commitment to the regeneration of Wembley."

Council secures Leeds site for regeneration

PETE HAYMAN

Leeds City Council (LCC) has confirmed the acquisition of 7 acres (2.8 hectares) of land to the rear of Elland Road stadium in Beeston.

In total, the local authority is looking to develop 40 acres (16.2 hectares) of land around

the home of Leeds United Football Club – currently used as a matchday car park.

It is hoped that in redeveloping the site, the scheme will provide a boost to the communities of Beeston and Holbeck. A masterplan for the area was published in 2007 by LCC.

CHANGING TIMES?

S&P works with you to deliver inspirational environments by solving your procurement demands and establishing new models of service consolidation and partnership working



The Edge, University of Leeds



Cardiff International Pool



K2, Crawley



The Peak, Stirling Sports Village

DELIVERING INTELLIGENT SOLUTIONS FOR 30 YEARS



Architecture • Masterplanning • Consulting • Regeneration • Feasibility
Refurbishment • Consultation • Engagement • Procurement Advice
Project Management • Planning Sustainability • Value Management

LONDON

Victory House
30 Kingsway
London WC2B 6EX
+44 (0)20 7831 8877
+44 (0)20 7831 4477 FAX

NOTTINGHAM

9 Weekday Cross
The Lace Market
Nottingham NG1 2GB
+44 (0)115 941 5369
+44 (0)115 947 5955 FAX

GLAGOW

Mackintosh House
5 Blythswood Square
Glasgow G2 4AD
+44 (0)141 225 8399
+44 (0)141 225 6271 FAX

Hospitality & Leisure

Specialist Property Services

**Valuations, Sales, Aquisitions,
Rent Reviews, Expert Witness.**

Contact: Colin White
colin.white@edwardsymmons.com

London • Bristol • Leeds • Liverpool • Manchester • Plymouth • Southampton

**Edward
Symmons**

020 7344 4500

www.edwardsymmons.com

UK and international
property experts
covering all sectors of the
leisure and hotel industry

Alan Plumb
+44 (0) 1865 269000
aplumb@savills.com
savills.co.uk/leisure

savills
savills.com

Rating • Planning & Site Licensing

**CHARLES
F. JONES & Son
LLP**
CHARTERED SURVEYORS

**Leading Professional Advisors
to the Leisure Industry
for over 70 years**

Charles F Jones & Son LLP

01244 328141 www.cfj.co.uk

16 Grosvenor Court Foregate Street Chester CH1 1HN

Valuations • Sales & Acquisitions

TO ADVERTISE IN THE PROPERTY DIRECTORY

please contact
Simon Hinksman on
(01462) 471905
or email
property@leisuremedia.com

LEISURE PROPERTY FORUM CORPORATE MEMBERS' DIRECTORY



For membership information
please contact Michael Emmerson
info@leisurepropertyforum.org

www.leisurepropertyforum.org

3D Reid
Tel: 0121 212 2221
www.3dreid.com

**Alan Conisbee &
Associates Ltd**
Tel: 020 7700 6666

Ashurst LLP
Tel: 020 7638 1111
www.ashurst.com

BCI Design
Tel: 020 7021 0217
www.bci-design.com

Berwin Leighton Paisner
Tel: 020 7760 1000
www.blplaw.com

Brook Street des Roches LLP
Tel: 01235 836614
www.bsdr.com

CB Richard Ellis Ltd
Tel: 020 7182 2197
www.cbre.com

CgMs Consulting
Tel: 020 7583 6767
www.cgms.co.uk

Chase & Partners LLP
Tel: 020 7389 9494
www.chaseandpartners.co.uk

Christie + Co
Tel: 0113 389 1700
www.christiecorporate.com

CMS Cameron McKenna LLP
Tel: 020 7367 2195
www.cms-cmck.com

Colliers International UK plc
Tel: 020 7487 1710
www.colliers.com/uk

Collyer Bristow LLP Solicitors
Tel: 020 7470 4408
www.collyerbristow.com

Cushman & Wakefield LLP
Tel: 020 7152 5209
www.cushwake.com

Davis Coffey Lyons
Tel: 020 7299 0700
www.coffeygroup.co.uk

DKA Associates
Tel: 020 7034 5267
www.dkallp.com

**DLA Piper Rudnick
Gray Cary UK LLP**
Tel: 020 7796 6155
www.dlapiper.com

Drivers Jonas Deloitte
Tel: 0207 3033702
www.djdeloitte.co.uk

Edward Symmons LLP
Tel: 020 7344 4500
www.edwardsymmons.com

Finers Stephens Innocent LLP
Tel: 020 7344 5312
www.fsilaw.com

Fleurets Limited
Tel: 020 7280 4700
www.fleurets.com

Gala Leisure Limited
Tel: 0115 948 5370
www.galacoral.com

Genting Casinos
Tel: 0118 939 1811
www.gentingcasinos.co.uk

Gerald Eve
Tel: 020 7333 6374
www.geraldeve.com

Grant Thornton UK LLP
Tel: 01753 781167
www.uk.gt.com

**Hadfield Cawkwell
Davidson Limited**
Tel: 0114 266 8181
www.hcd.co.uk

**Hermes Real Estate
Investment Management Ltd**
Tel: 020 7680 2145
www.hermes.co.uk

Indigo Planning
Tel: 020 8605 9400
www.indigoplanning.com

James A Baker
Tel: 01225 789343

Jones Lang Lasalle
Tel: 020 7399 5326
www.joneslanglasalle.co.uk

Kerry London Ltd
Tel: 020 7623 4957
www.kerrylondon.co.uk

King Sturge LLP
Tel: 020 7087 5500
www.kingsturge.com

Lawrence Graham LLP
Tel: 020 7379 0000
www.lg-legal.com

**Legal & General Investment
Management Holdings Ltd**
Tel: 020 3124 2763
www.lgim.co.uk

Leisure Opportunities
Tel: 01462 471 905
www.leisureopportunities.co.uk

Lunson Mitchenall
www.lunson-mitchenall.co.uk

**Mayer Brown Rowe
& Maw LLP**
Tel: 020 7782 8890
www.mayerbrownrowe.com

Merlin Entertainments
www.merlinentertainments.biz

**MWB Management
Services Ltd**
Tel: 020 7706 2121
www.mwb.co.uk

Odeon & UCI Cinemas Ltd
Tel: 0161 455 4000
www.odeonuk.com

Olswang
Tel: 020 7067 3114
www.olswang.com

Pinders
Tel: 01908 350500
www.pinders.co.uk

Reed Smith LLP
Tel: 020 3116 3000
www.reedsmith.com

Roberts Limbrick Ltd
Tel: 03333 405500
www.robertslimbrick.com

Royal Bank of Scotland plc
Tel: 020 7672 1752
www.rbs.co.uk/corporate

RTKL-UK Ltd
Tel: 020 7306 0404
www.rtkl.com

Saturn Projects Limited
Tel: 01844 354543
www.saturnprojects.com

Savills (L&P) Ltd
Tel: 020 7409 8700
www.savills.com

Shelley Sandzer
Tel: 020 7580 3366
www.shelleysandzer.co.uk

Strutt & Parker LLP
Tel: 01722 344057

The Leisure Database Co
Tel: 020 7379 3197
www.theleisuredatabase.com

Thomas Eggar LLP
Tel: 01293 742747
www.thomaseggar.com

Tragus Group
Tel: 020 7121 6432
www.tragusgroup.com

**Vizards Wyeth Solicitors
and Notaries**
Tel: 020 7400 9999
www.vizardswyeth.com

**Willmott Dixon
Construction Ltd**
Tel: 01932 584700
www.willmotttdixon.co.uk

X-Leisure Ltd
Tel: 020 7592 1500
www.x-leisure.co.uk

Plus there are more than 70 other companies represented by individuals.

*Let's go
to the beach!*



From Sandbanks to Branksome Dene Chine, Poole's seafront beaches have remained virtually the same since the 1950s.

In these changing times we know that we must review and improve services and facilities to be more responsive to the needs of residents and visitors.

This means there are opportunities for you to get involved in delivering a sustainable future.

We are determined to get it right and we'd like your commercial experience to help guide us. We need to understand the level of interest and potential commercial viability of Poole's beaches, as an all year round destination.

Come with your ideas, there'll be a chance to hear more and talk one-to-one with lead Council officers. We'll ask you to fill out a short confidential questionnaire to explore your level of interest.

To declare an interest in attending this event on 23rd June 2011, 9:00am – 1.00pm, please email c.corbin@poole.gov.uk

For Sale
freehold



Caravan park

Robin Hood View Caravan Park, Middle Plantation, Belle Eau Park, Kirklington, Nottinghamshire NG22 8TY

- Attractive rural site offering 25 touring pitches & extensive caravan storage areas
- Significant potential for further commercialisation - planning consent for 30 timber cabins approved
- Approximately 2.54 hectares (6.3 acres)
- Unconditional offers invited

For further information please contact:

James Gibson on 0121 609 8522 james.gibson@gva.co.uk

08449 02 03 04

gva.co.uk

Redefining the Cinema Experience and Pub-Quiz style quiz

at The Apollo Piccadilly Circus Cinema,
19 Regent Street, London SW1Y 4LR
Tuesday 7th June 2011, 6.15pm
Hosted by: Apollo Cinema



Cinemas can no longer consider themselves just a cinema chain, they're entertainment venues with an ever broadening offer. We'll analyze how this is being driven by developments in technology, flexible distribution, new types of content and local demand.

Programme

6.15pm - Registration
6.40pm - Introduction
6.45pm - Speakers
7.30pm - Panel Discussion with Q&As
7.45pm - Quiz
8.15pm - Refreshments
9.00pm - Close

Fee

£45 + VAT LPF Members
£55 + VAT LPF Members' guests

Speakers

Rob Arthur, Managing Director, Apollo Cinemas,
Penny Nagle, Co-Founder, More2Screen.

TO BOOK OR FOR MORE INFORMATION CONTACT:

Michael Emmerson, LPF Administration
E: info@leisurepropertyforum.org
T: 01462 471932 **F:** 01462 433909
W: www.leisurepropertyforum.org

**RESTRICTED
NUMBERS**
BOOK EARLY TO AVOID
DISAPPOINTMENT

EXPRESSIONS OF INTEREST SOUGHT



Wellesbourne Parish Council has recently acquired this local sports club building adjoining our sports fields.

There is approximately 500 sq.m. of space over two floors and a large car park.

We are looking to modernise it sustainably, and to convert it to self-funding community use including some or all of these facilities:-

- Gym or fitness suite
- Changing rooms and showers
- Exercise/dance space/meeting rooms
- Cafe/occasional bar
- Youth facilities/club

We hope there will be a second stage of development involving a sports hall, muga, skate park etc

It will probably be structured as a Social Enterprise, and while some Parish funds are available, it is likely that more capital will need to be raised through grants, and perhaps from operating partners.

Any organisation or individual who might be interested in helping this project forward whether as a potential operating partner, consultant, contractor, or supplier is invited to contact :

Tony Copeland on 01789 840345 or email copeland1@talk21.com
Or write to Wellesbourne Parish Council at 2, School Rd, Wellesbourne, Warwick CV35 9NH.



WELLESBOURNE PARISH COUNCIL

Wellesbourne is one of the largest rural settlements in Warwickshire located about 5 miles from Stratford-upon-Avon and 7 from Warwick/Leamington Spa. The Parish has a population of about 6000 with the same number again in smaller villages nearby.

Celebrating the talent of our young people



SAM COULSTOCK is customer relationship director for The Springboard Charity

Young people often get a bad press and are seen in the news for all the wrong reasons. Very few of them get acknowledged for achieving an outstanding skill or attribute, but the hospitality industry recently celebrated such talent with the Acorn Awards; the Galvin's Cup and the prestigious Savoy Gastronomes' Olive Barnett Award.

On 23 May Assia Riccio, guest services manager at Oxfordshire's Le Manoir Aux Quat'Saisons, was announced as the winner of The Savoy Gastronomes' Olive Barnett Award 2011. Riccio said: "It has been very intense but the knowledge which I have gained from this experience is immense."

The Savoy Gastronomes' Olive Barnett Award is synonymous with excellence in hospitality. Throughout the 35 years of the Award, it still reflects this philosophy. It was created in recognition of Olive Barnett, a pioneer of the highest standards in the hotel industry and is organised by Springboard with principal sponsor, The Savoy Hotel.

The ceremony was held at The Savoy, A Fairmont Managed Hotel. More than 250 industry bodies attended the evening, which marked the end of an intense judging weekend for the eight finalists.

Riccio will now receive a career development grant worth £1,750 per year for two years – kindly donated by the Savoy Educational Trust. She will also spend a week on the Lausanne Executive Education Summer Programme, provided by the Ecole Hôtelière de Lausanne, Switzerland.

The first and second runners up in the awards were Shankhanil Roy and Adam Beck respectively. Roy – assistant food and beverage manager at The London Marriott Hotel, Regents Park – will receive £1,250 per year for two years, while Beck – assistant restaurant manager at The Grove Hotel – will receive £750 per year for two years.

Terry Foreman, a member of The Savoy Gastronomes' and a fellow judge said: "All of the finalists for the Award were equally deserving, presenting

TRAINING

Canada's Merrithew partners with YMCAfit

TOM WALKER

Merrithew Health and Fitness Group, which is based in Toronto, Canada, has reached an agreement that will see the London-based provider YMCAfit join its international network of official Licensed Training Centers.

The agreement will result in the Stott Pilates method being taught at the London site. As part of the deal, YMCAfit has recently installed brand new Stott equipment at its Great Russell Street location.

Lindsay Merrithew, CEO of Merrithew said: "We're very excited about this new partnership and look forward to furthering Stott Pilates education in the Central London area".

Denise Page, director of YMCAfit, added: "It was a simple choice to work with Stott



YMCAfit will join Merrithew's international network of training venues

Pilates as a partner they share the same ethos for high standards. Pilates instructors are required to recognise the unique needs of their clients and to provide bespoke exercise programmes; this requires professionalism and advanced skills."

Woodhall Spa academy 'opens to all'

PETE HAYMAN

The National Golf Centre Academy at Woodhall Spa, Lincolnshire, has opened to the public in order to enhance the standard of teaching available to UK golfers.

Under the leadership of new head coach Neil Harvey, visitors are to have the opportunity to benefit from facilities previously only made available to elite players.

A series of new programmes have been created, which are specifically tailored for novices; juniors; and people looking for one-to-one tuition or residential breaks. A floodlit, 18-bay driving range is at the heart of the complex, which overlooks an area that replicates the challenges faced by golfers – including trees and woodland areas.

Facilities at the National Golf Centre Academy also include eight target greens to



Facilities at the Woodhall Spa venue have been opened up to all abilities

aim at, a large putting green, and individually-styled bunkers with differing grades of sand.

Harvey said: "This is fantastic news for people looking to sample the game for the first time or golfers seeking to improve their skills surrounded by some of the best practice facilities in the world."

English Heritage launches education resource

PETE HAYMAN

English Heritage has launched a new resource to promote specialist craftsmanship used in construction techniques now under threat.

According to the historic environment agency, the skills used in such methods are at

risk of dying out if they are not passed on to younger generations.

English Heritage's Sandra Stancliffe said: "Less than one third of England's building and construction workforce is made up of properly qualified, skilled crafts people."

Leisure Opportunities

**training
DIRECTORY**

From just £534 you can access over 23,000 motivated leisure professionals for 3 months (6 consecutive insertions). Committed to the leisure industry, they are potential students for your courses

TO ADVERTISE
+44 (0)1462 471747
leisureopps@leisuremedia.com

**Academy
OF EXERCISE STUDIES**

**Developing and Educating
True Industry Professionals**

- ✓ Diploma in Exercise Studies
- ✓ CPD Workshops
- ✓ Level 3 Personal Trainer
- ✓ Level 2 Gym Instructor

0845 835 0277

info@exercisestudies.co.uk
www.exercisestudies.co.uk

REGISTER NOW! Central YMCA Qualifications

**Do You Provide
First Aid Training?**

**QN
QUALIFICATIONS
NETWORK**

Want to reduce your HSE Certification costs and offer the latest QCF Level 2 EFAW and PAEDIATRIC qualifications?

Enjoy FREE and FAST training centre approval. We promise to provide the same great price per certificate no matter how large or small your order.

As an established Ofqual Awarding Body, you can have confidence in receiving the highest service.

**Call 0845 121 8328 or email
info@qualificationsnetwork.co.uk to find
out how you can claim 10 free certificates.***

* Terms and conditions apply

**SPORT AND LEISURE STATISTICS
FORECASTS FOR THE SPORT AND LEISURE INDUSTRIES**

The Sport Industry Research Centre publishes two annual reports, Leisure Forecasts and Sport Market Forecasts. These reports provide valuable insight into future market trends.

Both publications are essential references for industry practitioners, consultants and researchers. The Sport Market Forecasts are produced in conjunction with Sport England.

To find out more please visit
www.shu.ac.uk/ad/sportandleisure

Or contact Susie Shaw
Phone 0114 225 5919 Fax 0114 225 4341
Email s.shaw@shu.ac.uk

SIRC
Sport Industry Research Centre

Sheffield Hallam University **SPORT ENGLAND**

**Become an Instructor of HSE
First Aid at Work Courses**

**The Five-Day First Aid
Instructor Course**
also includes the PTLLS Level 3
Training Qualification

Nuco Training Ltd
08456 444 999
enquiries@nucotraining.com
www.nucotraining.com
www.nucoplus.com

"...I found the Instructor Course to be excellent and a credit to your company..."
Debbie Hull (Bishops Stortford)

nuco training **City & Guilds**
Approved Centre

For all your first aid needs

**Think it's
too late
to change
your career?
Think again**



Leeds Met offers a range of courses for people interested in sport, leisure or tourism; either as a career or for your own personal interest.

Courses include:

- MA Leisure, Sport & Culture
- MA International Tourism & Hospitality Management
- MA Cultural Tourism
- MSc International Hospitality Management
- MSc Responsible Tourism Management (Distance Learning)

**Visit www.leedsmet.ac.uk/postgrad
to find out more.**

**Postgraduate Open Evening
7 June 2011, 5pm-7pm**

The Rose Bowl, Portland Gate, Leeds

To find out more visit
www.leedsmet.ac.uk/postgrad



Are you in the running for a career in Leisure Management?

Loughborough College offers courses in Leisure, Sport, Event and Recreation Management to help you start your career, or develop your skills and managerial expertise from an existing position in the leisure industry.

Study full time, day release, block release or by distance learning, at a variety of levels; from the ISRM Fitness Management Certificate and Higher National Diploma to full Honours Degree. The Foundation Degree and Higher Professional Diploma are fully accredited by the ISRM, and lead to use of the designatory letters M.Inst.SRM.

Recruiting now for a September 2011 start.

For more information
0845 166 2950
www.loucoll.ac.uk

Loughborough
COLLEGE est. 1909

4298_02/11

Focus Training

Adding value to your staff

As an employer of fitness professionals, you'll recognise the value of investment in training them to ensure they deliver the best possible service to your membership.

Fantastic professional courses available in:

- Personal Training
- Exercise to Music
- Gym Instructor
- Step
- Studio Cycling
- Nutrition & Weight Management
- GP Exercise Referral
- And much more.



Call Focus Now:

0333 9000 222
or **01204 388330**

www.focus-training.com

leisureopportunities



Fortnightly leisure recruitment, training, property and news publication which gets you the right job or the perfect candidate for your vacancy

subscribe online:
www.leisuresubs.com

www.leisureopportunities.com

leisure opportunities joblink

Book a joblink with us and we'll put your logo and company name on every page of the Leisure Opportunities website www.leisureopportunities.co.uk

This advert will have a hyperlink to your website, where you can list all the job vacancies in your company.



Go to www.leisureopportunities.co.uk and click on the link to see the latest jobs from...



TO BOOK Call: +44 1462 471747
and start getting applications for your jobs IMMEDIATELY!

Looking for the next challenge?

Our goals are set high. Our expectations are on a different level.
Take on the challenge of leading our parks, leisure and events services.

Assistant Director Leisure
Up to £66,400 p.a.



To find out more about this exciting role and how to apply visit our website at www.leadingealing.com



energised careers...

The énergie group is the UK's fastest growing fitness franchisor. We operate over 80 clubs across the UK and Ireland under our four key brands énergie fitness clubs, Fit4less, SHOKK Youth Gyms and énergie fitness for women.

We have opportunities for experienced and motivated individuals in the roles of membership sales, fitness instructor, customer service and personal training. Our clubs operate in England, Scotland, Northern Ireland and Eire; you can find the exact locations on our 'club finder' page at www.energiefitnessclubs.com

Our clubs are not owned by large corporate groups but by individuals who have committed their money, time and energy in to creating clubs where the members matter.

If this sounds like the type of business that you would like to be a part of, we invite you to enquire via our 'career' site at www.energiefranchise.com with a cover note including the role and location that you are interested in.



www.leisureopportunities.co.uk
leisureopportunities
news & jobs updated daily online

- magazine
- web
- e-zine
- email
- digital magazine

YOUR 1ST CHOICE FOR RECRUITMENT & TRAINING

FORTHCOMING ISSUES:

14 JUNE 2011
BOOK BY NOON ON
WEDS 8 JUNE 2011

28 JUNE 2011
BOOK BY NOON ON
WEDS 22 JUNE 2011

12 JULY 2011
BOOK BY NOON ON
WEDS 6 JULY 2011

TO ADVERTISE, Contact the Leisure Opportunities team on
t: +44 (0)1462 431385 e: leisureopps@leisuremedia.com



For more details on the following jobs
visit www.leisureopportunities.co.uk
or to advertise call +44 (0)1462 431385



Freelance Personal Trainer, *Reach Fitness, Cheltenham, UK*
Spa Membership Sales Advisors, *Shire Hotels Ltd, Northamptonshire, UK*
Experienced exercise professionals, *Ten Pilates, Central London, UK*
Spa Membership Sales Advisors, *Shire Hotels Ltd, Knutsford, Manchester, UK*
Assistant Director Leisure, *Ealing Council, Ealing, London, UK*
Two innovative and visionary Gymnastics Coaches, *University of East Anglia, UK*
Sports Coach, *Sir John Heron Primary School, London, UK*
Operations Manager, *Wolverhampton Lawn Tennis & Squash Club, West Mids, UK*
Full Time Personal Trainer/ Sports Therapist, *Field of Fitness, Surrey, UK*
Trainer/Presenter, *Freddy Fit, Nationwide, United Kingdom, UK*
Sports Coordinators x 3, *Merton School Sports Partnership, Surrey, UK*
Spa Therapist, *Virgin Active, Chelmsford, Sheffield, Thundersley, UK*
Facility Support Manager, *Fife Sports and Leisure Trust Ltd, Dunfermline, UK*
Duty Officer, *Newport Pagnell Town Council, Buckinghamshire, UK*
Membership Sales Manager, *Weybridge Health Club, Weybridge, Surrey, UK*
Recreation Assistant, *Greenwich Leisure Ltd, Epsom / Ealing, UK*
Project Manager, *University of East London, London, UK*
Senior Spa Receptionist, *One Spa, City Centre Edinburgh*
Swimming Teacher, *Virgin Active, Wimbledon, UK*
Leisure Attendant (Dry Site), *Tone Leisure, Taunton, UK*
Recreation Assistant, *Tone Leisure, Ivybridge, UK*
Outdoor Facilities Manager, *Solent University, Southampton, UK*
Leisure Centre Manager, *Derbyshire Dales District Council, Derbyshire, UK*
Beauty Therapists, *Sopwell House, St Albans, UK*
Recreation Assistant, *Greenwich Leisure Ltd, London, UK*
Lecturers in Sports, *East Surrey College, Redhill, Surrey, UK*
Venue Manager, *Greenwich Leisure Ltd, Hackney, UK*
Duty Manager, *Greenwich Leisure Ltd, Reigate and Banstead, UK*
Climbing Instructor, *Lancaster University, Lancaster, UK*
Lead Fitness Course Tutors and Assessors, *The Training Room, Nationwide, UK*
Spa Director, *Senses Resorts and Spas, Paris, France*
Administration Manager, *University of East London, London, UK*
Centre Manager, *University of East London, London, UK*
Lead Strength and Conditioning Coach, *University of East London, London, UK*
Membership and Marketing Adviser, *University of East London, London, UK*
Visitor Experience Operations Manager, *Science Museum, London, UK*
Lifeguard, *Virgin Active, Islington, Northampton, Twickenham, UK*
Attention Personal Trainers, *Club Training, Nationwide Opportunities*
Sales Team Manager, *The Leisure Media Company Ltd, Hertfordshire, UK*
Health and Fitness Advisor x 2, *Lancaster University, Lancaster, UK*
Outreach Manager, *Leisure East Devon, Devon, UK*
Graduate Assistant, *University of Stirling, Stirling, UK*
Operations Manager (39hpw), *Nexus Community, Carterton, UK*
Duty Manager, *Greenwich Leisure Ltd, North West London, UK*
Graduate Fitness Officer (2 posts), *University of Stirling, Stirling, UK*
Community Development Officer - Part Time, *Greenwich Leisure Ltd, Epsom and Ewell, UK*

Recreation Assistant, *Greenwich Leisure Ltd, Merton, London, UK*
House and Visitor Experience Manager, *National Trust, Ormskirk, Lancs, UK*
Visitor Services Duty Manager, *Wellcome Collection, London, UK*
General Manager/Curator, *Blue Reef Leisure Company, Hastings, UK*
Chief Executive, *The British Association of Leisure Parks, Piers & Attractions Limited, London, UK*
Operations Manager, *Edinburgh Leisure, Edinburgh, UK*
Fitness Instructor, *Horizontes Health & Fitness Club, Woking, UK*
Leisure Services Manager, *Bluestone National Park Resort, Pembrokeshire, UK*
Sports Development Officer (Activation), *Lee Valley Regional Park Authority, North London, UK*
Personal Trainers, *The Gym Group, Nottingham, Birmingham, UK*
League Operations Manager, *Soccersixes, Nuneaton, UK*
Trainee Tutor, *The Training Room, Nationwide, UK*
Membership Sales Advisor & Receptionist, *Tone Leisure, Kingsbridge, UK*
Spa Operations Manager, *Gleneagles Hotel, Perthshire, UK*
Spa Operations, *ESPA International, Farnham, Surrey, UK*
Spa Director, *SpaStaff.com Ltd, Hawaii, USA*
Assistant Spa Manager, *Greenwich Leisure Ltd, Epsom and Ewell, UK*
Beauty Therapist, *Virgin Active, Crouch End, Northampton, UK*
International Training Managers, *ESPA International, Farnham, Surrey, UK*
Beauty Therapist, *SpaStaff.com, London, UK*
Weekend Beauty Therapist, *Center Parcs, Penrith, Cumbria, UK*
Spa Receptionist, *Coworth Park, Ascot*
Beauty Therapist, *SpaStaff.com, Co. Cavan, Ireland*
Skin Clinic Specialist, *SpaStaff.com, Reading, UK*
Business Development Manager, *Chuan Spa, London, UK*
Senior Therapist, *Bali Health Lounge, Manchester, UK*
Spa Attendant, *Coworth Park, Ascot*
Massage Therapist, *SpaStaff.com, Dubai, United Arab Emirates*
Spa and Leisure Manager, *Formby Hall Golf and Country Club, Merseyside, UK*
Treatment Rooms for a two year lease, *Holiday Inn London, London, UK*
General Manager, *Country Club Group, Home counties, UK*
Swimming Instructor, *Virgin Active, Fulham, UK*
Inclusive Activities Coordinator/ Membership Admin, *YMCA London South West, London, UK*
Operations Supervisor x 2 (39hpw), *Nexus Community, Chesham / Beaconsfield, UK*
Health Fitness Sports Manager, *Prestige sports complex, Mid Essex, UK*
Recreation Assistant, *Greenwich Leisure Ltd, Highgrove, Hillingdon, UK*
Community Development Officer, *Greenwich Leisure Ltd, SE London, UK*
Swimming Instructor, *Virgin Active, Canary Riverside, UK*
Leisure Manager, *Impulse Leisure, Thurrock, Essex, UK*
Head of Sales & Commercial, *Fusion, London, UK*
Lifeguard, *Virgin Active, Various locations, UK*
Tennis Development Officer, *Swansea Tennis Centre, Swansea, UK*
Swim Co-Ordinator, *Virgin Active, Leeds, UK*
Spa Operations Manager, *Gleneagles Hotel, Perthshire, UK*
Leisure Assistants, *Greenwich Leisure Ltd, Harrow Partnership, UK*



COUNTRY CLUB GROUP

Position: General Manager
Location: Home counties
Remuneration: £35k to £55k per annum + 20% of annual salary bonus

Who Are the Country Club Group?

The Country Club Group are a privately owned group of golf & country clubs. We specialise in taking golf-only facilities and transforming them into premium-end, multi-faceted, country clubs by adding purpose-built gyms, fitness studios, swimming pools, spa facilities and food & beverage outlets.

The future is full of opportunity to grow and expand. As such, we're inviting applicants for the positions of General Manager at properties we anticipate acquiring in the near future.

What Kind of Person Would Succeed?

The General Manager is the most important person in all our clubs. They are the person who set the standards, who lead from the front, who drive the business forward.

- To succeed, the General Manager must show a high level of **entrepreneurial flair** – the ability to think outside of the box and take calculated risks to improve profitability.
- As with any people-based business, the General Manager needs a **big personality** – comfortable and confident in face-to-face communication with customers and staff alike.
- A high level of **attention-to-detail** is also required.
- Someone who can divorce themselves from the day-to-day operations and look through fresh eyes to identify and then improve the small things that make such a big difference to the customer experience.
- Our business is **membership-driven** – through both **sales and retention**. The General Manager must take a pro-active involvement in both these areas to ensure continued growth in the subscription line.

How Do I Apply?

Applications are invited by submission of a full Curriculum Vitae to recruitment@ccgclubs.com

All applications will be dealt with in the strictest of confidence.

SP

Sportspark

UEA

University of East Anglia

Wanted - Two innovative and visionary Gymnastics Coaches • Ref: SP186

£16,412 to £17,358 per annum
 plus 5% attendance bonus* (Fixed-term 2 years)

Sportspark at UEA Norwich is one of the largest community sports facilities in the UK attracting 1.4 million visits a year.

Our latest development is **SPring** - a Gymnastics Centre due for completion in September 2011. This is an exciting new concept in Gymnastics Centres where the emphasis will be on recreational gymnastics and trampolining for all ages, rather than performance gymnastics.

We are looking for two visionary gymnastics coaches to help us create and deliver an exciting and innovative programme. You will have a minimum of a Level 2 Coaching qualification and lots of enthusiasm for involving people in the sport. We will provide you with a unique opportunity to shape recreational gymnastics in a brand new centre.

This appointment is subject to a criminal record check from the CRB.

Closing date: 12 noon on 21 June 2011.

Further particulars and an application form are available on our website: www.uea.ac.uk/hr/jobs/ or Tel. 01603 593493.

* subject to full attendance.



SIR JOHN HERON PRIMARY SCHOOL

SPORTS COACH

SALARY SCALE 3 POINT 14-17
£17,484 - £18,582 DEPENDING ON EXPERIENCE



Do you have experience of coaching a range of sports to young children?

Can you work term times between 8.00am and 4.45pm, starting September 2011?

We have created a position to provide our pupils with Physical Education curriculum enrichment opportunities. This unique role will predominantly be one of a multiple sports coach providing a range of sports/ activity sessions before and after school, as well as at lunchtime. It will also involve supporting both the teacher and children in a classroom environment.

You must have

- Several coaching qualifications from recognised sports bodies
- Recent coaching experience with children aged 5-11 years
- Excellent spoken and written English
- Plenty of energy and enthusiasm
- A commitment to the school and what we are trying to achieve
- Excellent time management and organisational skills
- Previous experience of working within a primary school setting

THIS POST WILL BE SUBJECT TO AN ENHANCED CRB CHECK.

For more information and to apply please visit www.leisureopportunities.co.uk/sirjohnheron

CLOSING DATE: 15th JUNE 2011

New resort to be built on Anglesey

PETE HAYMAN

Anglesey Aluminium Metal (AAM) has announced that it has joined forces with Land and Lakes to develop a new leisure resort on land near Holyhead, North Wales.

AAM, which will also work in partnership with the Isle of Anglesey County Council (IACC) and Welsh Assembly Government on the project, is seeking a "sustainable legacy" for the site and will work with Land and Lakes to develop Penrhos Country Park and surrounding areas.

Land and Lakes has also been in talks with Horizon Nuclear Power over the possibility of giving over some of the land to provide accommodation for nuclear construction workers. An AAM spokesperson



Penrhos Coastal Park and its surrounding areas are to be transformed

said: "It is AAM's intention to work with Land & Lakes, IACC and the Welsh Government to develop the Coastal Park and its surrounding area as a holiday leisure resort."

Wagamama to pursue "aggressive" UK expansion

PETE HAYMAN

Cushman and Wakefield (C&W) has been retained by Wagamama as part of the restaurant chain's "aggressive" expansion plans.

The Japanese-style noodle restaurant group – bought by Duke Street Capital in March – is

looking to grow its UK estate from its current 71 locations to 300.

It is expected that Wagamama will achieve its expansion aims by opening 20 new sites each year, which will be led by Chris Warren – head of C&W's leisure and restaurants team.

New paddock complex for Silverstone

PETE HAYMAN

Silverstone Circuits and the British Racing Drivers' Club (BRDC) have opened the Silverstone Wing – a new pit, paddock and conference complex – at the venue.

The multi-million pound development boasts 41 garages; a race control building; a podium; a media centre; and hospitality and VIP spectator areas for motor racing events.

Facilities also include three large halls; conference space; a business centre; and a 100-seat auditorium, with the Silverstone Wing to be able to host other events. Work started on the building in April 2010, with the roof area covering 9,700sq m (104,410sq ft). Populous were behind the design of the complex.

BRDC president Damon Hill said: "The BRDC is extremely proud of this new building, but we acknowledge that none of it would



The 390m (1,280ft)-long building boasts 41 garages

have been possible without our superb and exceptional Silverstone team. Silverstone is a cornerstone of our industry and the BRDC will continue to develop the circuit to ensure that Britain has a world class home for motor sport and related technology."

- ACE +44 (0)1669 631 210
www.acenterprises.org.uk
- Arts & Business +44 (0)20 7378 8143
www.aandb.org.uk
- ALVA +44 (0)20 7222 1728
www.alva.org.uk
- Arts Council +44 (0)20 7333 0100
www.artscouncil.org.uk
- ASVA +44 (0)1786 475152
www.asva.co.uk
- BALPPA +44 (0)20 7403 4455
www.balppa.org
- BHA +44 (0)845 880 7744
www.bha-online.org.uk
- BICM +44 (0)845 217 1811
www.bicm.co.uk
- BiSL +44 (0)20 8780 2377
www.bisl.org
- CCPR +44 (0)20 7976 3900
www.ccpr.org.uk
- CMAE +44 (0)1334 460 850
www.cmaeurope.org
- Countryside Agency +44 (0)1242 521381
www.countryside.gov.uk
- CPRE +44 (0)20 7981 2800
www.cpre.org.uk
- English Heritage +44 (0)870 333 1181
www.english-heritage.org.uk
- FSPA +44 (0)2476 414999
www.sportsandplay.com
- FIA +44 (0)20 7420 8560
www.fia.org.uk
- HHA +44 (0)20 7259 5688
www.hha.org.uk
- IAAPA +1 703 836 4800
www.iaapa.org
- IEAP +44 (0)1403 265 988
www.ieap.co.uk
- Institute of Hospitality +44 (0)20 8661 4900
www.instituteofhospitality.org.uk
- ISPAL +44 (0)845 603 8734
www.ispal.org.uk
- LPF +44 (0)1462 471932
www.leisureprop.com
- LMCA +44 (0)1278 436910
www.lmca.info
- MLA +44 (0)20 7273 1444
www.mla.gov.uk
- NPFA +44 (0)20 7833 5360
www.playing-fields.com
- People 1st +44 (0)870 060 2550
www.people1st.co.uk
- REPs +44 (0)20 8686 6464
www.exerciseregister.org
- SAPCA +44 (0)24 7641 6316
www.sapca.org.uk
- Sports Aid +44 (0)20 7273 1975
www.sportsaid.org.uk
- Sport England +44 (0)8458 508 508
www.sportengland.org
- Springboard +44 (0)20 7497 8654
www.springboarduk.org.uk
- SkillsActive +44 (0)20 7632 2000
www.skillsactive.com
- Tourism Management Institute +44 (0)1926 641506
www.tmi.org.uk
- Tourism Society +44 (0)20 8661 4636
www.tourismsociety.org
- VisitBritain +44 (0)20 7578 1000
www.visitbritain.com
- World Leisure +1 250 497 6578
www.worldleisure.org