

leisure opportunities

09 AUGUST - 22 AUGUST 2011 ISSUE 560

Daily news & jobs: www.leisureopportunities.co.uk

New 2012 Aquatics Centre completed

London 2012's new Aquatics Centre – designed by Zaha Hadid and S&P Architects – has become the last of the six permanent Olympic Park venues to be completed.

The Olympic Delivery Authority (ODA) unveiled the complex on 27 July, with diver Tom Daley making the first dive into the venue's pool and helping to mark the one-year countdown to the Games.

Work started in June 2008, with more than 3,630 workers and 370 UK firms involved. Balfour Beatty was lead contractor. The other main permanent venues located at the London 2012 Olympic Park – including the Olympic Stadium; the Velodrome; and the Handball Arena – have already been completed.

ODA chair John Armitt said: "In July 2006, we published a delivery timetable which set



The facility is the last of the main Olympic Park venues to be completed

out the ambitious target to complete the main venues a year before the Games. With the completion of the sixth main permanent venue, we have delivered on that commitment."



AFL designed the Birmingham venue's overhaul

Edgbaston cricket ground unveils £32m new look

HRH Prince Philip has officially opened a new multi-million pound complex at Edgbaston cricket ground in Birmingham – designed by AFL Architects.

The £32m scheme included a new conference and banqueting suite, able to cater for up to 700 guests; the Jaguar and 1882 Club suites; and new media facilities.

A visitor and learning centre also forms part of the redevelopment of Edgbaston, which has seen an increase in the spectator capacity of the venue to 25,000 for both domestic and international matches.

National Museum of Scotland opens

Edinburgh's new-look National Museum of Scotland has officially reopened its doors to the public, following the completion of a major £47.4m refurbishment programme.

National Museums Scotland (NMS) has unveiled 16 galleries at the attraction, which explore sciences, humanities and world cultures and comprise more than 8,000 objects.

The majority (80 per cent) of the artefacts on display for the first time in generations across 13,000sq m (139,931sq ft) of gallery space. A new entrance hall has also been created.

Gareth Hoskins Architects were the lead master planners, with Ralph Appelbaum Associates and Beck Interiors also involved.



The refurbishment forms part of a wider masterplan

Construction group Balfour Beatty was the lead contractor on the scheme, which is at the centre of NMS' £70m masterplan for the Edinburgh museum. A further 11 more galleries will be added to its line-up by 2020.

Bannatyne teams up with SpaBooker

Bannatyne Fitness – part of the Bannatyne Group – is to install the cloud-based SpaBooker online booking system at all of its UK spas.

Spa director Justin Musgrove said: "We are continually looking at ways to enhance our customers' experience at the Bannatyne Spa.

"Web-based booking is now an everyday part of people's lives and SpaBooker by GramercyOne extends that service into the UK spa market for us, ensuring that booking at Bannatyne's is simple, straightforward and efficient."

GET
LEISURE
OPPS

Magazine sign up at
leisureopportunities.co.uk/subs

Job board live job updates
leisureopportunities.co.uk

PDF for iPad, Kindle & smart phone
leisureopportunities.co.uk/pdf

Ezine sign up for weekly updates,
leisureopportunities.co.uk/ezine

Online on digital turning pages
leisureopportunities.co.uk/digital

Instant sign up for instant alerts,
leisureopportunities.co.uk/instant

Twitter follow us:
[@leisureoppsjobs](https://twitter.com/leisureoppsjobs)

RSS sign up for job & news feeds
leisureopportunities.co.uk/rss

Contacts:

The Leisure Media Company
Portmill House, Portmill Lane,
Hitchin, Herts SG5 1DJ, UK
Tel: +44 (0)1462 431385
Fax: +44 (0)1462 433909
e-mail: please use contacts'
fullname@leisuremedia.com

Subscriptions

Denise Gildea 01462 471930
subs@leisuremedia.com

Editor

Liz Terry 01462 431385

Managing Editor

Tom Walker 01462 471934

Assistant editor

Pete Hayman 01462 471938

Design

Ed Gallagher 01905 20198

Internet

Dean Fox 01462 471900

Tim Nash 01462 471917

Publisher

Julie Badrick 01462 471919

Associate publishers

Paul Thorman 01462 471904

Simon Hinksman 01462 471905

Account Manager

Sarah Gibbs 01462 471908

Property desk

Simon Hinksman 01462 471905

Spa Opportunities & business

development, attractions and museums

Annie Lovell 01462 471907

Financial Controller

Sue Davis 01395 519398

Financial Administrator

Denise Gildea 01462 471930

Circulation Manager

Michael Emmerson 01462 471932

Subscribe to Leisure Opportunities,

Online: www.leisuresubs.com

Email: subs@leisuremedia.com

Tel: +44 (0)1462 471913

Annual subscription rates are UK £31,
Europe £41, Rest of world £62, students UK £16.

Leisure Opportunities is published fortnightly by
The Leisure Media Company Limited, Portmill
House, Portmill Lane, Hitchin, Herts SG5 1DJ, UK
and is distributed in the USA by SP, 75 Aberdeen
Road, Emigsville, PA 17318-0437. Periodicals
postage paid @ Manchester, PA POSTMASTER
Send US address changes to Leisure Opportunities,
c/o PO Box 437, Emigsville, PA 17318-0437.

The views expressed in print are those of the author
and do not necessarily represent those of the
publisher The Leisure Media Company Limited.
All rights reserved. No part of this publication
may be reproduced, stored in a retrieval system or
transmitted in any form or by means, electronic,
mechanical, photocopying, recorded or otherwise
without the prior permission of the copyright
holder. Printed by Warners Midland plc.

© The Leisure Media Company Limited 2011

ISSN 0951/8210

SPORT

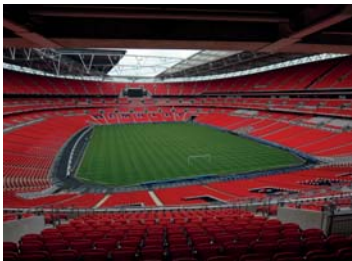
MPs: English football 'needs reform'

English football is in need of "big changes" and "urgent reform" to address debt problems and to secure the sport's future, according to a House of Commons committee.

In a report, the Culture, Media and Sport (CMS) Committee said the Football Association (FA) was most appropriate to lead efforts to tackle football's weaknesses.

However, the committee also said the FA would have to undergo "urgent reform" itself in order to enable it to undertake its role effectively and meet the sport's future challenges.

Among the recommendations set out by committee was the removal of the football creditors rule and the introduction of a "rigorous" licensing model across the professional game. Meanwhile, the FA has been called to review expenditure at grassroots level, with a



English football requires "urgent reform", according to the committee

specific focus on coaching development, while also reforming its internal structure.

CMS committee chair John Whittingdale said: "The FA is the organisation for the job, but it has some way to go getting its own house in order before it can tackle the problems in the English game, and address the future."

New grassroots hockey campaign to launch

England Hockey Board (EHB) has revealed that it is to roll-out a new nationwide grassroots campaign - Back to Hockey - in September in a bid to increase participation numbers.

It is hoped that more than 15,000 women will be inspired to take up the sport by the

national governing body's programme, which will run over the next three years.

According to EHB, Back to Hockey will target women who have previously participated in the sport, offering six- to eight-week blocks of informal 60- to 90-minute sessions.

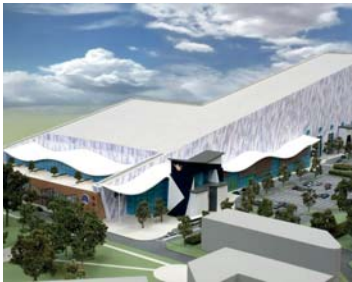
Council approves £50m Leisuredome plans

North Somerset Council has backed plans for the £50m Leisuredome development, which will be located on a former Royal Air Force site near Weston-super-Mare.

The 12.7-acre (5.1-hectare) complex will feature a 210m (689ft) indoor real ski slope - one of the UK's largest; a 40m (131ft) climbing wall; and an indoor surfing centre.

A sky-diving facility is also proposed as part of the all-weather development, which will form part of the Locking Parklands scheme currently being led by St Modwen.

Other facilities earmarked for Leisuredome include a health club; a children's activity zone; and a crèche, with the proposals now due to go before the communities secretary.



The complex will house one of the UK's largest indoor real ski facilities

It is hoped that work will commence on site by the end of the year, with completion due in early 2013. Sir Robert McAlpine has been named as the primary contractor.

Shortlist named for 2012 venues

The Olympic Park Legacy Company (OPLC) has announced that three operators have been shortlisted to operate London's Aquatics Centre and Multi-Use Arena after the 2012 Games.

Greenwich Leisure (GLL); Parkwood Leisure; and Serco Group have been confirmed as the groups currently in the running to take over the venues. The OPLC has revealed that an appointment is due to be made in early 2012.

The chosen operator will be responsible for helping to grow sports participation by offering an extensive range of programmes, coaching and community activities at both sites.

In addition, the successful bidder will also work in conjunction with the OPLC to develop a number of pathways that promote local employment and enhanced accessibility.



Three groups have been shortlisted to operate the 2012 Handball Arena

OPLC director of venues Peter Tudor said: "By appointing the operator before the Games, we can work together to develop a full programme of activities for when the venues reopen, focused on encouraging sports participation, community access and a range of cultural events."

First phase of Kingswood scheme opens

South Gloucestershire Council (SGC) has unveiled remodelled and refurbished swimming pools at Kingswood Leisure Centre – the first phase of a wider £2.8m redevelopment.

New changing facilities and spectator seating have also been launched as part of Stage One of the project, along with the introduction of increased energy efficiency measures.

Phase two of the project will focus on a new gym area, dry changing facilities and reception at the centre, which is run by the Circadian Trust.

SGC's James Hunt said: "The investment made demonstrates the continued commitment of the council in improving leisure facilities across South Gloucestershire."



The first stage of the redevelopment project targeted the pool facilities

Mark Crutchley, chief executive of the Circadian Trust, added: "It is great that phase one has been completed to originally agreed time and cost plans."

Football Foundation unveils 'Sustainability Toolkit'

The Football Foundation (FF) has announced the launch of its new Sustainability Toolkit to help local organisations and projects struggling to deal with the current economic climate.

Available to download free from the foundation's website, the toolkit features 12 main

areas to help groups start drawing up a sustainability action plan.

Tailored to suit an entire organisation or an individual project, some of the areas detailed in the toolkit are income generation; workforce development; and business planning.

Willmott Dixon to build new Oxford pool

Hertfordshire-based construction group Willmott Dixon has been chosen by Oxford City Council to build a new multi-million pound swimming pool in Blackbird Leys.

It follows a decision of OCC's executive on 21 July, with the Faulkner Browns Architects-designed venue to feature an eight-lane, 25m pool with floating floor.

A teaching pool; spectator seating; and a toddler fun pool will also be included as part of the new development, which is to be built adjoining the existing Blackbird Leys Swimming Leisure Centre.



LRK Associates have designed the £8.1m facility

Morgan Sindall to deliver new £8.1m London arena

Morgan Sindall has been awarded an £8.1m contract to deliver the new Mayesbrook Park Sports Arena in London, which is poised to become one of the largest facilities of its kind in the UK.

The LRK Associates-designed complex is earmarked to include a 5,000sq m (53,820sq ft) sports hall; a 1,000sq m (10,764sq ft) gymnasium; and changing facilities.

Scheduled to be completed in February 2012, the new facility will be first used as a Games Time Training Venue by the British handball and wheelchair rugby teams.

£4m investment for Scottish sports facilities

Scotland's First Minister Alex Salmond has revealed that £4m is to go towards improvements to community sports facilities.

The latest funding will be invested by national sports agency SportsScotland over a four-year period, which complements plans to establish 100 community hubs by 2014.

Salmond said: "This £4m fund will help communities upgrade equipment and facilities, and follows a £500,000 fund announced by sports minister Shona Robison [in June] to encourage community ownership of sports amenities."

Pulse secures Craven District Council deal

Pulse has announced that it has been appointed as the preferred fitness equipment supplier to Craven District Council, following a tendering process.

The deal will see Pulse work on a new 70-station gym at Craven Swimming Pool and Fitness Centre, with the total solution contract worth in excess of £150,000.

Pulse will provide group cycles; free weights; resistance and cardiovascular machines; and integrated Smart Centre gym management software at the new-looking gym as part of the agreement.



Banstead's leisure centre will now include a pool

Green light for new Banstead Leisure Centre

A new leisure centre for Banstead will incorporate a 25m, six-lane swimming pool after the project was given the go ahead by Reigate and Banstead Borough Council.

The full council adopted a recommendation to develop the new Banstead Leisure Centre in Merland Rise, which had been agreed by the executive in late July.

Wet facilities – also including a 13m x 7m teaching pool – are to be included in the scheme, despite being initially scrapped in November 2010 following a review of the local authority's investment plans.

New GP referral scheme for Covent Garden

A new exercise on referral scheme will be launched by the Jubilee Hall Trust in Covent Garden, London in September.

The programme has been set up in partnership with NHS Westminster but will be entirely funded by Jubilee Hall. Residents who have specific conditions will be able to be referred to Jubilee Hall by GPs for one-to-one sessions with a highly qualified instructor over a 10-12 week period.

"Exercise on referral" has been used nationally to successfully treat conditions ranging from osteoporosis to depression.

Lords publish lifestyle findings

A new report from the House of Lords Science and Technology Sub-Committee has called for new measures to be implemented in order to encourage lifestyle changes.

Behaviour Change said that "nudging" is unlikely to be successful in promoting a healthier lifestyle and behavioural changes required to address key social issues.

It follows a year-long probe into how the government looks to change the behaviour of individuals and found that isolated "nudges" are not effective in achieving their aims.

The committee has now called for new measures – including some regulatory – to drive the behavioural and lifestyle changes needed to combat some of the UK's social problems.

In the report, it was also found that current voluntary arrangements with businesses – with



'Nudging' is unlikely to encourage people to alter unhealthy lifestyles

regards to public health – have major flaws and should be dropped in favour of regulation.

Committee chair Baroness Neuberger said: "There are all manner of things that the government want us to do – lose weight, give up smoking, use the car less, give blood – but how can they get us to do them?"

IHRSA report reveals UK market's value

The latest edition of the *IHRSA International Report: Size and Scope of Key Health Club Markets* has estimated that the UK's health and fitness market generated revenues of £3.7bn during 2010.

Charting the key markets in Europe and Asia-Pacific, the study shows that while Italy has the most number of health clubs (8,300 facilities) in Europe and Spain the most members (8 million), it is the UK that generates most money from its 7.4 million members and 6,000 clubs.

The German market is among the lowest for total market penetration (9.69 per cent of the population are members of a health club) while Spain (19.7 per cent of population are gym members) is among the highest.



IHRSA found the UK generated most money from clubs and members

According to IHRSA's report, "6.9 million [UK] consumers claim to exercise at least 30 minutes, three times a week".

To read more about the IHRSA report, see *July's Health Club Management* (p.20).

Councillors back £2.5m Worle proposals

North Somerset Council's (NSC) executive has "welcomed" plans for a new development comprising sports facilities and learning disabilities services in Worle, Weston-super-Mare.

The £2.5m complex is to include a full-size artificial turf pitch with floodlighting; a gym;

a dance studio; a multi-purpose sports room; and indoor and outdoor changing areas.

Located at Worle Community School, the adult day care services would operate during the school day and the school would have use of facilities for curriculum-based purposes.



"Now I can track my fitness plan or book a personal training session instantly."

Darren Masters, online at The Sports Centre with The Cloud

Increase customer loyalty with **FREE Wi-Fi***

Join the UK's largest public Wi-Fi network and get your customer experience in shape

With a Wi-Fi system that's flexible, easy to manage and super-reliable, you and your customers can get the most from your marketing strategy.

Make your business work smarter

Use Wi-Fi from The Cloud to:

- **Increase loyalty** with effective customer service programmes
- **Create business zones** to help people mix fitness and work
- **Improve scheduling** of classes and personal training
- **Cross-sell products and services** based on customer insight
- **Keep customers updated** with events and promotions

Make your customers happy

Work or pleasure. Smartphone, tablet or laptop. Your customers can surf, stream, share – and stay connected with a Wi-Fi service that's **free, fast** and **easy** to connect to in seconds.

Get free Wi-Fi* working for
your business, call now on
0845 333 0400
or visit thecloud.net

quoting reference Leisure Opportunities Magazine



Wi-Fi Powered by
The Cloud

A BSKyB owned company

*The service is free to end users subject to payment of a set up and periodic fees from you, the venue, to The Cloud for the provision of services. Equipment (including router) remains the property of The Cloud. Available to customers in The Cloud's network area in the UK, subject to premises location and a minimum term. End user and further terms apply. Correct at July 2011.

Star Trac kit for Stratford's Healthworks Fitness Studio

Healthworks Fitness Studio – a Stratford-Upon-Avon health club run by personal trainer Jason Ziel – has invested £12,000 in the refurbishment of half of its gym floor, which has seen new equipment such as the Star Trac HumanSport Range installed.

Originally launched in 1994 by Jason and his late father Ray, the 2,500 sq ft (232sq m) independent health club currently has more than 300 active members. Ziel hopes that the refurbishment will not only expand training options for existing members, but also attract new members.



H2 Bike Run has launched its first venue in Soho

H2 Bike Run founder sets out growth targets

H2 Bike Run founder Piers Slater has outlined his vision for the growth the 'commuter fitness club' chain, which launched in Soho, London, earlier this year.

In an interview with *Leisure Management* (Issue 3, 2011), Slater said the company is aiming to open its second site at London Wall within the coming 12 months.

Slater also told the magazine that H2 Bike Run is looking to add "two or three" more clubs to its pipeline, which will work towards the aim of opening 10 London sites. Other UK cities may also be targeted.

New fitness suite opens at Knutsford venue

London 2012 cycling hopeful Dani King has helped launch a new gym at Knutsford Leisure Centre, Cheshire, which has benefited from a £153,000 refurbishment.

Matrix Fitness has equipped the venue's fitness suite, which was unveiled on 16 July and aims to improve access and attract users who would not normally use a gym.

Cheshire East Council cabinet member with responsibility for environmental services Rod Menlove said: "Our investment in the new fitness suite shows our commitment to encouraging as many people as possible to stay fit and healthy."

Swimming sector report unveiled

The majority of the UK population (84 per cent) live within 2 miles (3.2km) of a swimming pool, according to the 2011 State of the UK Swimming Industry report.

Published by The Leisure Database Company, the study found that the public is able to choose from 4,674 pool facilities across more than 3,300 public and private sites.

In the year to 31 March 2011, there was a decrease in the number of pool facilities at private health clubs. However, this was offset by a rise in provision and public sector venues.

The report has also revealed that the South East region has the most swimming facilities per geographic region, with Northern Ireland offering the least amount.

Sport and Recreation Alliance chair Andy Reed said: "We know that swimming remains



IMAGE: JESSA AMAROVIC/SHUTTERSTOCK.COM

The study found most Britons live within 2 miles of a swimming facility

a massive participation sport and activity, but we still need to grow the market and the numbers participating regularly.

"Reports suggest that latent demand for swimming remains high so providing this kind of detailed information can help us all plan to meet this growth."

Work starts on Fraserburgh development

Aberdeenshire Council has held a turf-cutting ceremony in order to mark the start of work on a new multi-million pound swimming and leisure complex in Fraserburgh.

The project is to be delivered by Stewart Milne Construction and will feature a 25m competition-standard, six-lane swimming pool and a small training pool.

A three-court sports hall; a gym; and a fitness studio will also form part of the venue, along with a village changing area; sauna/steamroom facilities; and a new community centre.

Sustainable materials and measures will be incorporated into the new building, which aims to attain a "Very Good" rating under the BREEAM assessment system.



Stewart Milne Construction has been appointed to build the new centre

Architectural works have been carried out in-house by part of the Infrastructure Service of the council. W A Fairhurst and Partners; AECOM; and DEP Landscape Initiatives will work with the local authority going forward.

Power Plate studio opens in Nantwich

Cheshire-based PT Jennie Johnson and business partner Andrew Watts have set up a new independent fitness facility in Nantwich.

The newly-opened JJ Studio is a dedicated Power Plate studio and has been equipped with four Power Plate pro6 machines.

Johnson said: "We wanted to offer a fitness studio that is different from other gyms on the high street. Our aim is to create a friendly and relaxed environment, with clients who want results and staff equipped with the skills to help them achieve that."



CARTOON NETWORK™



**WE KNOW WHY ADVERTISING
ON OUR KIDS CHANNELS IS SO
SUCCESSFUL...**

...find out
at LIW

Cartoon Network are
exhibiting for the first
time ever at LIW 2011!



**Register for your FREE
ticket at www.liw.co.uk**

and quote LOA1 to avoid the £30 onsite admission fee

**LEISURE
INDUSTRY WEEK**

20-22 Sept 2011 · NEC Birmingham UK

Providing a passport to career progression



PHILIPPE ROSSITER
is chief executive of the
Institute of Hospitality

The recent publication of the CBI's annual survey on education and skills identified some encouraging trends, but also provided illustrations of where there is still room for improvement. It was good to see that 40 per cent of firms responding to the survey plan to increase investment in training.

Another positive message to emerge was that more than half of employers are involved in apprenticeships, with another 17 per cent planning to become involved in the next few years. Nevertheless, a third stressed that reducing bureaucracy involved in delivering apprenticeships would encourage them to become more involved.

Worryingly, however, the survey highlighted the fact that only a third of the training provided by employers leads to a government-recognised qualification. Of even greater concern was that 89 per cent of organisations use external training providers, but are critical about this often not being responsive to business needs. If one puts these two findings together, there is the quite alarming scenario that those who receive the training will neither receive proper recognition for their learning, nor be best prepared to undertake the duties required of them by their employer.

Such a situation is of concern, especially the case in the hospitality industry, where the predicted growth in jobs over the next decade is staggering. One of the key findings of the CBI survey was that more than 70 per cent of businesses expect to increase the number of jobs requiring leadership and management skills. Although the survey was conducted across all sectors of the UK economy, the same situation exists worldwide in the hospitality industry, where all employers are concerned about their future ability to fill the key roles at supervisory and junior management level.

The Institute of Hospitality provides a ready-made response to these industry concerns through flexible and accessible hospitality management qualifications, which are delivered to fit business needs, and, most importantly, provide successful learners with a valuable and well-recognised passport to career progression.

HOTELS

'Solid' June for London's hoteliers

Preliminary figures from PKF Hotel Consultancy Services has shown a "solid" month of growth for London's hotel sector in June, compared with the same period last year.

A 14.2 per cent increase in room rate and a 16.2 per cent growth in rooms yield saw London hotels report figures close to pre-recession levels.

Meanwhile, regional trading was also positive after occupancy grew by 5.4 per cent. Rooms yield increased by nearly 6 per cent, although room rate was broadly flat.

Robert Barnard, partner at PKF Hotel Consultancy Services, said: "London has had another fantastic month with performance returning to the sorts of levels that we used to see prior to 2007.

"The economic backdrop is still challenging so hoteliers should not get too comfortable



London hoteliers reported figures close to pre-recession levels in June

yet. However, with the Olympics only a year away now, there is scope for some level of on going optimism.

"With many households still under pressure, hoteliers in the regions will be crossing their fingers for staycations to once again boost their summer figures."

New gym proposed for St Helens hotel

A new gym is to be created at the Park Inn by Radisson St Helens Hotel – recently acquired by the Radisson Group – as part of a wider revamp of the Merseyside property.

The new 144sq m (1,550sq ft) gym will double the size of the existing fitness suite and is to

become one of the first in northern England to feature Precor's Experience Series 880 line.

A former function room will be combined with the existing fitness facility to create the gym, which has followed six months of planning and design. Work will take four weeks.

New hotel set to open at Drayton Manor

Drayton Manor Hotel – a new 150-room hotel being developed at Staffordshire's Drayton Manor Theme Park – is set to open its doors to guests on Monday 15 August.

The hotel boasts 11 Thomas and Friends-themed family rooms, which include décor inspired by the character and specially-designed Thomas the Tank Engine bunk beds.

Two restaurants will also be on offer at the Drayton Manor Hotel, including the Parklands Restaurant and the Parklands Brasserie, along with two bars and a themed playground.

A senior management team has now been appointed, including Martin Wright (general manager). He said: "The Drayton Manor Hotel is a major multi-million pound investment for



General manager Martin Wright (top centre) heads up the hotel team

Drayton Manor Theme Park. The hotel will also be a venue for corporate hospitality events and private functions, which will complement Drayton Manor's existing facilities."

Arts complex to open in Colchester

firstsite, a Colchester-based visual arts organisation, has revealed that its new Rafael Viñoly Architects-designed home is to open its doors to the public on 25 September.

An exhibition inspired by Colchester's status as one of the UK's oldest towns – Camulodunum – will help mark the launch of the 3,200sq m (34,455sq ft) complex.

Built at a cost of £28m, the new building will include flexible presentation spaces for visual art exhibitions; artists' spaces for project work; learning studios; and a 190-seat auditorium. A daytime cafe/nighttime restaurant with terrace overlooking a new public park; a shop; and meeting facilities will also be on offer.

Funding partners for the development of the new venue include Colchester Borough Council (CBC); Essex County Council; Arts



Rafael Viñoly Architects are behind the design for firstsite's new venue

Council England; and the University of Essex. The East of England Development Agency has also contributed towards the project.

CBC portfolio holder for resources and ICT Paul Smith said: "Colchester's new landmark building for the visual arts will be a community hub for our town, county and region."

Shrewsbury Museum and Art Gallery to move

Shrewsbury Museum and Art Gallery (SMAG) has started preparations for its relocation to the Shropshire town's old Music Hall from its existing Barker Street home in late 2012.

A restoration project is currently underway to preserve the buildings behind the façade of

the Music Hall, with the new attraction to open its doors to the public in early 2013.

Shropshire Council's Mike Owen said: "People are working extremely hard to restore the old Music Hall, ready for the museum's move to its new home later next year."

Design accolade for Oriel Mostyn Gallery

Oriel Mostyn Gallery, which has been designed by Ellis Williams Architects, has received the Gold Medal for Architecture at the Wrexham and District 2011 National Eisteddfod of Wales.

The contemporary art attraction in Llandudno, North Wales, underwent an extensive revamp that led to the addition of two galleries at the Grade II-listed property.

The award is sponsored by the Design Commission for Wales and is run in conjunction with the Royal Society of Architects in Wales.

Meanwhile, Alfredo Cramerotti – currently the senior director at QUAD, Centre of Art, Media and Film in Derby – has been named architect of the contemporary art gallery.



The renovation of the gallery was designed by Ellis Williams Architects

Cramerotti will take up the position in September to succeed Martin Barlow, who oversaw the major £5.1m redevelopment and expansion of the publicly-funded attraction.

UW agrees to lease Dylan Thomas Centre

The University of Wales (UW) has agreed to lease Swansea's Dylan Thomas Centre from the local authority in a deal that secures the future of the attraction.

A partnership between Swansea Council and UW will see an exhibition dedicated to the Welsh poet remain at the site, while the centre will also retain its current name.

The Maritime Quarter facility will also become home to the University of Wales Dylan Thomas Prize as part of the agreement, which is subject to the completion of legal details now under discussion.



Abbey Theatre in Dublin is among the recipients

Arts Council Ireland confirms touring grants

Arts Council Ireland has revealed that more than €1.2m (€1m) worth of additional funding is to be made available to enable nearly 40 organisations to tour their work.

More than 40 towns, villages and cities across Ireland will benefit from the hosting of concerts, plays and performances as a result of the funding announcement.

Among the organisations to benefit are the National Chamber Choir, the Abbey Theatre and Town Hall Theatre Galway, along with the Druid Theatre Company and the Irish Writers' Centre.

New innovation fund for NI creative industries

Northern Ireland arts minister Carál Ní Chuilín has unveiled a new Creative Industries Innovation Fund, which will recognise the sector's potential for growth.

The Department of Culture, Arts and Leisure is poised to invest £4m over the coming four years to support the sector, with grants made through the Arts Council-administered fund.

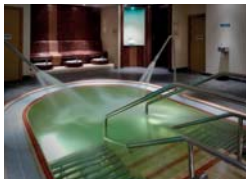
In the first round of funding, the focus will be on digital content projects and features businesses involved in internet and mobile content, as well as animation.

Anne Semonin deal for Cliveden House spa

The Pavilion Spa at the Cliveden House hotel in London, UK in August 2011 has announced a deal to use Anne Semonin products in all its treatments.

The spa at the former stately home will feature a menu of bespoke treatments based on Anne Semonin's signature concept of 'made-to-measure' beauty.

Signature treatments at the spa will include The Cliveden Supreme Haute Couture Face and Body therapy – a treatment that lasts more than two hours and is tailor made to each person's skin type.



The spa area has benefited from a £200k revamp

Pendle Leisure Trust to roll-out spa concept?

Pendle Leisure Trust has revealed that the Inside Spa public sector spa concept could be rolled-out further, following its success at Pendle Wavelengths in Nelson.

Phil Storey, chief executive of the trust, has told *Leisure Management* (Issue 3, 2011) that plans to expand the brand into neighbouring boroughs are being considered.

Satellite treatment rooms in other facilities are also among new proposals following the success of the Pendle Wavelengths spa facility, which was expanded at a cost of £220,000 earlier this year.

Radisson Edwardian to unveil Guildford spa

The new Radisson Edwardian Guildford has confirmed that a 490sq m (5,274sq ft) spa area is to open its doors to hotel guests and members on 29 September.

Operating under the mantra Results, Luxury, You, the facility will boast five treatment rooms and a mud room – a modern interpretation of a traditional Hammam.

Facilities at the new Radisson Edwardian Guildford's spa will also feature a stone oven sauna; a crystal steamroom; and two experience showers, along with a relaxation room offering complimentary refreshments.

Spa for Cotswolds development

Work has started on the new Orchard Spa to open at The Lakes by yoo – a second homes scheme in the Cotswolds – in February 2012.

The 791sq m (8,514sq ft) facility will comprise two treatment rooms with therapies on offer from qualified therapists, as well as a 25m indoor swimming pool; sauna; and steamrooms.

A gym will also form part of the new private spa centre, which will be housed in a building comprised of glass and timber cladding in keeping with a surrounding arboretum.

Angus Morrogh-Ryan – partner at De Matos Ryan Architects – has been appointed to work on the design of the new spa, which will be open to on-site residents and guests.

The Lakes by yoo development director Giles Baker said: "The introduction of the new



The new Orchard Spa will comprise two treatment rooms and a sauna

spa is great news for our residents and further increases our luxury offering. In a place where such a huge emphasis is placed on relaxation and getting closer to nature, it makes total sense for us to provide a spa."

The Lakes by yoo is the result of a joint venture between The Raven Group and yoo.

Six Senses Eco Villa set up at Start event

Soneva Kiri by Six Senses has teamed up with the 2011 Earth Awards to set up a prototype of a Six Senses Eco Villa at a Start event held at Clarence House, London, last month.

Established by the HRH Prince of Wales, Start is a programme that aims to help people across the UK lead more sustainable lives and to show what a more energy efficient, cleaner and healthier future could look like.

The Six Senses Eco Villa was one of five installations at the festival. All five designs address challenges faced due to climate change.

Initially designed by one of Six Senses' architects Louis Thompson, the Eco Villa is a prototype zero carbon emissions structure,



The prototype Eco Villa was set up at Prince Charles' Start event in July

showcasing a range of experimental environmental technologies incorporated into a bio-climatically designed villa made from locally sourced building materials.

Jumeirah Carlton Tower names new spa manager

Jumeirah Carlton Tower in Knightsbridge, London, has announced that Jenny Hayward has been appointed spa manager of The Peak Health Club and Spa.

In addition to supporting the manager of The Peak, Hayward will also be responsible for

the development of new treatments and providing training to the therapist team.

Hayward joins The Peak having formerly run her own business MagicBeauty, Fleet Street, and has also worked in the Men's Grooming City in the Harrods department store.

£10.2m for four heritage projects

Four UK projects – including the major redevelopment of Colchester Castle Museum, Essex – are to receive a share of £10.2m from the Heritage Lottery Fund (HLF).

Colchester Castle Museum has been awarded £3.2m towards the transformation of the historic attraction into a high-quality exhibition space, which will feature recent archaeological discoveries.

Elsewhere, the Nomadic Trust has also been handed a £3.2m grant, which will be used for the restoration of the last remaining White Star vessel – *SS Nomadic* – in Belfast, Northern Ireland.

Other confirmed awards by the HLF include a £1.4m grant towards the development for a new permanent exhibition exploring the life of British composer Benjamin Britten at The Red House in Aldeburgh, Suffolk.



Colchester Castle Museum has secured £3.2m towards a redevelopment

Lytham Hall in Lytham St Anne's is the final recipient of a confirmed grant, with £2.4m to fund restoration work to remove the building from English Heritage's 'at risk' register.

The HLF also announced that initial support has been awarded to other projects, including a Battle of Bannockburn visitor centre.

O2 rooftop walkway proposals approved

London's O2 Arena has been given the green light to proceed with proposals for a rooftop walkway across the landmark venue.

Designed by Rogers Stirk Harbour + Partners, the temporary walkway is to be suspended from the O2 Arena's yellow masts and will be able to accommodate 90 people at a time.

Visitors will walk to a central viewing platform from a station at the arena entrance, with the walk to be 190m (623ft) in length and 60m (197ft) above the ground at its highest point.

Greenwich Council has approved the plans, which were drawn up by Rogers Stirk Harbour + Partners to a brief that did not "overwhelm or detract" from the venue itself.



The walkway will take visitors to a central viewing platform on the roof

AEG Europe's Alistair Wood said: "The principle embodies our desire to create a daytime and evening experience that will appeal not only to existing visitors to The O2, but also attract further visitors from across London."

Jeremy Reed named new CEO of BALPPA

The British Association of Leisure Parks, Piers and Attractions (BALPPA) has named Jeremy Reed as its new chief executive.

Reed – currently visitor operations director for English Heritage's North of England region – will take up the role in early September.

At English Heritage, he has been responsible for the overall management of 121 properties in the agency's portfolio in Yorkshire, the North East and North West. Prior to his time with English Heritage, Reed worked with business contract caterer Aramark.



...and if you want to talk to kids, you need to talk to us.



We're experts in Kids media, so if you want to reach this powerful and growing audience, you should come to us. You can run a campaign on our channels for less budget than you might think, and the high return on investment might surprise you too.

Find out how we can help you at:
www.turnermediainnovations.com/leisure



The project will incorporate a gym/leisure facility

Council approves £50m Coventry development

Coventry City Council has approved Barberrys Developments' bid to transform a former Royal Mail Sorting Centre with a £50m new mixed-use scheme.

The Bishop Gate development will comprise a new gym/leisure facility with swimming pool contained within a 20,000sq ft (1,858sq m) unit and an 8,000sq ft (743sq m) 'green' roof.

A supermarket; retail units; and landscaping are also included in the plans, which will see the existing Royal Mail buildings demolished once work commences.

Green light for Earth Centre proposals in Doncaster

Educational services provider Kingswood has received the green light to proceed with plans for a new activity centre established at Doncaster's former Earth Centre.

Doncaster Council has approved planning permission for the multi-million pound development, which will help pave the way for the sale of the site to Kingswood to be completed next month.

In transforming the former Earth Centre attraction in Conisbrough, it is thought that 200 new jobs will be created – including apprenticeship schemes for local colleges.

Liverpool Festival Gardens opening delayed

The re-opening of Liverpool's Festival Gardens following a multi-million pound overhaul has been delayed after the main contractor went into administration.

Site owner Langtree now expects the launch of the refurbished gardens to take place in mid-September, having originally been scheduled for next month.

It comes after Mayfield Construction was forced into administration as a result of financial difficulties incurred by its parent company. Langtree now looking for a new contractor to complete the work.

RIBA Stirling Prize 2011 shortlist revealed

The Hopkins-designed London 2012 Velodrome is one of the six schemes to be shortlisted for the Royal Institute of British Architects (RIBA) Stirling Prize 2011.

Folkwang Museum in Essen, Germany (David Chipperfield Architects) and Stratford-upon-Avon's Royal Shakespeare and Swan Theatres (Bennetts Associates) are also shortlisted.

Two London schemes are also in the running for the accolade – the Evelyn Grace Academy (Zaha Hadid Architects) and The Angel Building, (Allford Hall Monaghan Morris).

Meanwhile, the sixth shortlisted project for the prize is O'Donnell and Tuomey's An Gaearas in Derry, Northern Ireland.



London's new Velodrome is among the six schemes shortlisted by RIBA

It is the first time the shortlist comprises practices that have already been shortlisted for the prize, with the winner scheduled to be announced on 1 October in Rotherham.

OPLC launches public space contest

A competition to design a new public space for London – including two visitor centres and a playground – has been launched by the Olympic Park Legacy Company (OPLC).

Interested teams have been given five weeks to come forward with expressions of interest for the scheme.

The contest aims to seek designs for two distinctive areas – the first to welcome crowds to the south plaza and Olympic Park and incorporating an urban landscape similar to the South Bank.

Included in the first area will be a visitor centre; outdoor event space; water features; and play facilities, along with a skate park. It will be sited near venues such as the Olympic Stadium. Meanwhile, a second area is earmarked for the green river valley that has been created for the 2012 Games and will boast a



The contest will seek ideas for two distinctive areas of the Olympic Park

visitor centre with café and indoor space for schools and community groups.

OPLC chief executive Andrew Altman said: "This is a unique opportunity for design teams to create exceptional places that match the stunning mix of iconic venues and parkland that surround them."

WDC votes against sports village scheme

Wycombe District Council's cabinet has voted not to proceed with the development of a proposed new community stadium and sports village at Wycombe Air Park.

The local authority has confirmed work on the project would now be halted, but is to

explore alternative options for future sporting provision in the Wycombe area.

A 17,500-seat stadium and community sports village had been planned by Wycombe Sports Developments Limited (WSDL), which has expressed disappointment at the decision.

CHANGING TIMES?

S&P works with you to deliver inspirational environments by solving your procurement demands and establishing new models of service consolidation and partnership working



The Edge, University of Leeds



Cardiff International Pool



K2, Crawley



The Peak, Stirling Sports Village

DELIVERING INTELLIGENT SOLUTIONS FOR 30 YEARS



Architecture • Masterplanning • Consulting • Regeneration • Feasibility
Refurbishment • Consultation • Engagement • Procurement Advice
Project Management • Planning Sustainability • Value Management

LONDON

Victory House
30 Kingsway
London WC2B 6EX
+44 (0)20 7831 8877
+44 (0)20 7831 4477 FAX

NOTTINGHAM

9 Weekday Cross
The Lace Market
Nottingham NG1 2GB
+44 (0)115 941 5369
+44 (0)115 947 5955 FAX

GLASGOW

Mackintosh House
5 Blythswood Square
Glasgow G2 4AD
+44 (0)141 225 8399
+44 (0)141 225 6271 FAX

Hospitality & Leisure

Specialist Property Services

**Valuations, Sales, Aquisitions,
Rent Reviews, Expert Witness.**

Contact: Colin White
colin.white@edwardsymmons.com

London • Bristol • Leeds • Liverpool • Manchester • Plymouth • Southampton

**Edward
Symmons**

020 7344 4500

www.edwardsymmons.com

**UK and international
property experts**
covering all sectors of the
leisure and hotel industry

Alan Plumb
+44 (0) 1865 269000
aplumb@savills.com
savills.co.uk/leisure

savills
savills.com

Rating • Planning & Site Licensing

**CHARLES
F.J. JONES & Son
LLP**
CHARTERED SURVEYORS

**Leading Professional Advisors
to the Leisure Industry
for over 70 years**

Charles F Jones & Son LLP

01244 328141 www.cfj.co.uk

16 Grosvenor Court Foregate Street Chester CH1 1HN

Valuations • Sales & Acquisitions

TO ADVERTISE IN THE PROPERTY DIRECTORY

please contact
Simon Hinksman on
(01462) 471905

or email
property@leisuremedia.com

LEISURE PROPERTY FORUM CORPORATE MEMBERS' DIRECTORY

3D Reid
Tel: 0121 212 2221
www.3dreid.com

Contisbee
Tel: 020 7700 6666
www.contisbee.co.uk

Ashurst LLP
Tel: 020 7638 1111
www.ashurst.com

Bardays Commercial Bank
Tel: 07766 361 232

BGI Design
Tel: 020 7021 0217
www.bgi-design.com

Berwin Leighton Paines
Tel: 020 7760 1000
www.blplaw.com

Brook Street des Roches LLP
Tel: 01235 836614
www.bhdc.com

CB Richard Ellis Ltd
Tel: 020 7182 2197
www.cbre.com

CgMs Consulting
Tel: 020 7583 6767
www.cgms.co.uk

Chase & Partners LLP
Tel: 020 7839 9494
www.chaseandpartners.co.uk

Christie & Co
Tel: 0113 389 2700
www.christiecorporate.com

Citygrove Securities Plc
Tel: 020 7647 1700
www.cms-cmk.com

CMS Cameron McKenna LLP
Tel: 020 7367 2195
www.cms-cmk.com

Colliers International UK plc
Tel: 020 7487 1710
www.colliers.com/uk

Collyer Bristow LLP Solicitors
Tel: 020 7470 4408
www.collyerbirstow.com

Cushman & Wakefield LLP
Tel: 020 7152 5209
www.cushmanwake.com

Davenport Lyons
Tel: 020 7468 2600
www.davenportlyons.com

Davis Coffey Lyons
Tel: 020 7299 0700
www.coffeygroup.co.uk

DLA Piper UK LLP
Tel: 020 7796 6155
www.dlapiper.com

Drivers Jonas Deloitte
Tel: 0207 3033702
www.djdeloitte.co.uk

E3 Consulting Limited
Tel: 0845 230 6450
www.e3consulting.co.uk

Edward Symmons LLP
Tel: 020 7344 4500
www.edwardsymmons.com

Finers Stephens Innocent LLP
Tel: 020 7344 5312
www.fsllaw.com

Flagdate LLP
Tel: 020 3036 7000
www.flagdate.com

Fleurets Limited
Tel: 020 7280 4700
www.fleurets.com

Gala Leisure Limited
Tel: 0208 507 5445
www.galacoral.com

Genting Casinos
Tel: 0118 939 1811
www.gentingcasinos.co.uk

Gerald Eve LLP
Tel: 020 7333 6374
www.geraldve.com

Grant Thornton UK LLP
Tel: 01753 781167
www.uk.gt.com

Hadfield Cawkwell
Davidson Limited
Tel: 0114 266 8181
www.hcd.co.uk

Hermes Real Estate
Investment Management Ltd
Tel: 020 7680 3796
www.hermes.co.uk

Humberts Leisure
Tel: 020 7629 6700
www.humberts-leisure.com



Indigo Planning
Tel: 020 8605 9400
www.indigoplanning.com

James A Baker
Tel: 01225 789343
www.joneslanglasalle.co.uk

Jones Lang Lasalle
Tel: 020 7399 5326
www.joneslanglasalle.co.uk

Kerry London Ltd
Tel: 020 7623 4957
www.kerrylondon.co.uk

Kimbell LLP
Tel: 01908 350 205
www.kimbells.com/hospitality

King Sturge Services Ltd
Tel: 0207 493 4933
www.kingsturge.com

Lawrence Graham LLP
Tel: 020 7379 0000
www.lg-legal.com

Legal & General Investment
Management Holdings Ltd
Tel: 020 3124 2763
www.lgim.co.uk

Leisure Opportunities
Tel: 01462 471 905
www.leisureopportunities.co.uk

Lunson Mitchel
Tel: 020 7680 3796
www.lunson-mitchell.co.uk

Matthews & Goodman
Tel: 020 7747 3157
www.matthews-goodman.co.uk

For membership information
please contact Michael Emmerson
info@leisurepropertyforum.org

www.leisurepropertyforum.org

**Mayer Brown Rowe
& Maw LLP**
Tel: 020 7782 8890
www.mayerbrownrowe.com

Merlin Entertainments
www.merlinentertainments.biz

**MWB Management
Services Ltd**
Tel: 020 7706 2121
www.mwb.co.uk

Odeon & UCI Cinemas Ltd
Tel: 0161 455 4000
www.odeonuk.com

Olswang
Tel: 020 7067 3000
www.olswang.com

Pindars
Tel: 01908 350500
www.pindars.co.uk

Pitmans LLP
Tel: 0207 6344653
www.pitmans.co.uk

Rank Group - Gaming Division
Tel: 01628 504 194

Reed Smith LLP
Tel: 020 3116 3000
www.reedsmith.com

Roberts Limbrick Ltd
Tel: 03333 405500
www.robertslimbrick.com

RTKL-UK Ltd
Tel: 020 7306 0404
www.rtkl.com

Saturn Projects Ltd
Tel: 01454 202076
www.saturnprojects.com

SRP Risk and Finance
Tel: 0208 672 7707
www.srp-risk.com

Strutt & Parker LLP
Tel: 01722 344057
www.theleisuredatabase.com

Thomas Eggar LLP
Tel: 01293 742747
www.thomaseggar.com

Tragus Group
Tel: 020 7121 6432
www.tragusgroup.com

Townes & Hamlin LLP
Tel: 020 7233 8084
www.wagaman.com

Willmott Dixon
Tel: 0207 009 3620
www.willmott-dixon.com

X-Leisure
Tel: 020 7592 1500
www.x-leisure.co.uk

Plus there are more than 70 other companies represented by individuals.

DIBDEN GOLF CENTRE AVAILABLE FOR LEASE

The Council is considering the transfer of the the management of its municipal golf course to a suitably experienced operator. Opened in 1974 the venue has stunning views over Southampton Water.

Main features are:

- 27 holes plus floodlit 18 bay driving range
- Close to M27/M3 Motorway
- Annual turnover around £900,000
- over 60,000 rounds in 2010

Pre-Qualification Questionnaires including a description of the Council's needs and requirements can be obtained from Bob Millard on 023 8028 5460 or bob.millard@nfdc.gov.uk

These must be returned to the Council by
26th August 2011



Expressions of interest for the partial refurbishment of the North Devon Leisure Centre

North Devon Council invites expressions of interest for the partial refurbishment of the North Devon Leisure Centre in Barnstaple. The project will include the demolition of redundant elements, removal of pool surround tiles, blast-cleaning and painting of first floor steel pool tank, installation of waterproofing and re-tiling, inspection and corrosion protection to steel roof trusses and pool tank support steelwork, localised repairs to reinforced concrete frame, strip-out, remodelling and replacement of changing areas, installation of new fixtures, fittings and services.

Work is to be undertaken whilst the building is partly occupied by the public.

The procurement process will be carried out via our online procurement system. You can register and find out more about the project at

www.supplyingthesouthwest.org.uk

The pre-qualifying questionnaire must be completed and submitted by 12 noon on 15th August 2011.



North Devon Council
Civic Centre
Barnstaple EX31 1EA

www.northdevon.gov.uk

Rushmere CATERING and ACTIVITY LEISURE FACILITIES



Rushmere is a newly opened 400 acre Country Park, located on the Greensand Ridge, just to the north of Leighton Buzzard, Bedfordshire. The next phase of development is to create a series of revenue-generating catering and activity leisure facilities on the site. Expressions of Interest are invited for all, or elements of, facilities, including innovative proposals. The aim is to make the Park a financially self-sustaining enterprise whilst giving the public a rich range of interesting activities consistent with maintaining the ambience of this countryside location which is both valued by the public and important for biodiversity.

The closing date for receipt of proposals is 9th September 2011.

Information packs can be obtained from:
Malcolm Oliver, The Greensand Trust, Suite 5,
The White House, Hockliffe Street, Leighton Buzzard,
Beds LU7 1HD, Tel: 01525 378101,
email: Malcolm.Oliver@greensandtrust.org

The Leisure Property Forum



Membership of the Forum includes:

- Regular networking opportunities
- A full programme of leisure property related early evening seminars
- Details of forthcoming LPF events and other industry dates on our website
- Members' rates to LPF seminars and events
- Complimentary places at some events
- A free subscription to Leisure Opportunities magazine, which features regular LPF columns, tenders, for sale adverts and property news
- A 10% discount on property advertising in Leisure Opportunities magazine
- A dedicated LPF monthly email bulletin, delivered straight to your mailbox
- Access to the full listing of all our members

For more information visit www.leisurepropertyforum.org

Email: info@leisurepropertyforum.org

Tel: +44 (0)1462 471932 Fax: +44 (0)1462 433909

VAT Registration No. 844 8560 00

Bringing back the Americans



KURT JANSON
is policy director at
Tourism Alliance

The International Passenger Survey figures for the year to date suggest that inbound tourism is starting to recover, with visitor numbers up 6 per cent since the start of 2011. Most importantly, there are signs of recovery in American inbound figures which have shown an increase of 10 per cent.

The US is the this country's largest source of inbound tourism revenue, with visitors spending almost twice as much (£2.1bn per year) than our next largest source market (Germany with £1.2bn per year). In 2010, the UK received 2.67m visitors from the US. If the 10 per cent increase is maintained through to the end of the year, we will receive an additional 267,000 visitors. These additional visitors will contribute £210m more to the UK economy.

While this is undoubtedly good news, it does have to be put into perspective. In 2000, the UK received nearly 4.1m US visitors. Since then, numbers fell by 1.4m (34 per cent), so an increase of 267,000 must be seen as only the start of the recovery. The extent of the problem facing the UK in the US market can be seen by comparing US visitors with total visitor numbers.

Terrorist attacks, the second Gulf War and the global financial crisis have all had an impact on US outbound visitors over the last decade, but the total number still grew by 10 per cent. Now, there is the argument that, as a result of security fears and financial hardship, US residents are taking holidays closer to home.

However, US outbound figures show that while visitor numbers to the UK decreased, US visitor numbers to rest of Europe went up by 300,000. More worryingly, that trend has occurred as the euro increased in value against the dollar by nearly a third; the pound continues to trade at the same level against the dollar it did in 2000.

If visitor numbers to Europe grew even as the cost of holidays there also went up, while decreasing significantly to the UK without cost increases, this suggests a serious underlying problem. Could it be that 2000 was the year that Britain's marketing

TOURISM

London Visitor Charter unveiled

London mayor Boris Johnson has secured the signatures of leisure and tourism businesses as part of a new charter, which aims to ensure fair prices for visitors to the 2012 Games.

The O2 Arena, the Tower of London, Kensington Palace and Hampton Court are among the signatories of the new London Visitor Charter, which was launched by the mayor's promotional agency London and Partners.

A number of individual pubs, bars and restaurants have also signed up to the charter, as well as the New West End Company, Eurostar and minicab firm Addison Lee.

Johnson said: "The London Visitor Charter demonstrates our determination to offer all our visitors both a great deal as well as a great time. I call on all businesses in the capital's huge leisure sector to get on board and be part



The O2 Arena is one of the leisure firms to sign up to the new initiative

of this drive to tell our guests that London offers great value for money."

Sally Davies, events director at The O2, added: "The 2012 Games will provide us with a once-in-a-lifetime opportunity to showcase our venue, entertainment district and services to a national and international audience."

£1m tourism investment for Cornwall's mining heritage

Cornwall Council has revealed that more than £1m has been invested through the Cornish Mining World Heritage Site's (WHS) sustainable rural tourism programme.

The first two phases of Discover the Extraordinary development started in early

2010, with 11 WHS partner attractions improving visitor facilities and public presentations.

Schemes to benefit in the first phases of the three-year investment programme included an extended underground tour and new WHS exhibition at Geevor Tin Mine.

Domestic tourism increases in Q1 2011

The number of domestic overnight trips taken in the UK during the first quarter of 2011 grew by 5 per cent compared with the same period last year, according to VisitEngland.

Figures from the tourism agency also reported a 4 per cent increase in trips taken in England for the period, while visits to English attractions were up by 7 per cent.

The increase generated more than £170m further spend for the UK, with overall growth for the quarter coming from increased volumes in January and February.

A spokesperson for VisitEngland said: "During March, there were 8 million domestic tourism trips in Great Britain, an 8 per cent decrease from 8.7 million last year. This could



The number of visits to English tourist attractions was up by 7 per cent

in part be due to the Easter Holidays starting later in April this year compared to 2010 when, in some regions, they started in March, and the prospect of a double bank holiday."



Amanda Hamilton to offer tips on a healthy life

TV presenter and Power Plate ambassador Amanda Hamilton will be at LIW sharing her tips on juggling a well-balanced diet and regular exercise.

She'll talk specifically about her lifestyle programme to aid weight loss, combining acceleration training workouts on the Power Plate machine with nutritional tips. Learn to help your clients fit exercise and healthy eating into their busy lives. This seminar will dispel the myth that we're too busy for a healthy lifestyle.

Ticketing experts OmniTicket coming to LIW

Exhibiting at LIW is OmniTicket Network, a system developer, integrator and consultant specialising in comprehensive turnkey solutions for ticketing, access control, reservations, pre-sales, internet sales, retail point of sale and inventory control operations.

OmniTicket Network is the solution of choice for venues of all sizes with a proven track record in the most well known and demanding venues including, Walt Disney World, Universal Studios, Drayton Manor Park, Royal Botanical Gardens Kew and Stonehenge.

Boost your training and learning with SkillsActive

SkillsActive will be promoting various learning resources such as activepassport™ - an online record of an individual's training, volunteering, qualifications and achievements, set to revolutionise the sector.

SkillsActive is the only organisation that endorses fitness courses, allowing training providers to receive Register of Exercise Professionals CPD credits for courses. A SkillsActive endorsement enables you to promote your courses to 30,000 potential new customers in the sector with REPs one-stop training needs web shop.

Energy Management at LIW

Research based energy consultancy, BRE will present 'Energy management: producing an efficient culture' as part of the brand new Energy Management at LIW programme.

Technical Manager, Dr Andy Lewry, will outline a step-by-step approach to energy management providing clear and practical advice from board level to operational staff, on how to implement energy management within an organisation.

This presentation will continue with an explanation of how sources of data such as energy audits, EPCs/DECs and M&T can underpin energy management discussing the difference between asset and operational performance, and how both are needed to adequately describe the performance of the built environment.



The session will offer attendees ideas on how to save on utility bills

Andy will end with an introduction of the new energy management standard ISO 50001, describing how this can contribute to an auditable approach to implementation of an energy management programme. PowerPerformer will also contribute to the Energy Management at LIW programme with a session entitled 'Energy saving like no other'. Both presentations are scheduled for the first day of LIW (20th Sep).

Olympic Games' health and safety advisor to present at LIW

Right Directions has been awarded the contract to deliver the Baseline Health and Safety Management System for all London 2012 Olympic Park venues on behalf of the London Organising Committee of the Olympic Games and Paralympic Games Limited (LOCOG).

In this 45 minute presentation, Joe Ryan, Director of Right Directions, will explain the simplicity of a successful health and safety management system. He will show how a five-step strategy can help your organisation meet regulatory health and safety requirements, and will demonstrate how he has used this process to take companies, such as the Lee Valley Regional Park Authority, from a one to four star British Safety Council award.



Creating a safety culture at facilities is paramount for operators

Developing a positive 'safety culture' is key to succeeding in the effective delivery of health and safety arrangements. Joe will explain how this approach can not only help implementation of the process, but also how to do it well and efficiently.

Pressing home the sector's crucial role



STEPHEN STUDD
is chief executive
officer of SkillsActive

The government's decision last year to reduce funding for education and skills by 25 per cent shifted the onus for skills investment to employers and individuals. Now, employers are expected to commit not just time for training, but more money too. They have incentivised this by creating opportunities for match funding from government.

Now more than ever we need to ensure we are influencing decision makers when it comes to public funding. This means taking advantage of opportunities that support the sector's ability to grow and create jobs.

One of our early successes has been the result of our first bid to the Growth and Innovation Fund from the Department for Business, Innovation and Skills. This success is a clear acknowledgment of two things; firstly, the active leisure sector has an important role to play in the economy – a real win for the sector and SkillsActive and the Fitness Industry Association (FIA).

Secondly, the willingness of our employers to provide leadership for the skills agenda through SkillsActive and employer groups, such as the refreshed Sport and Fitness Employer Group (SAFE). But if we want to build on this, we have to consistently demonstrate this leadership.

Our response – working with employers and partners – is in line with the recommendations of the Skills Protocol Employer Leadership Group (SPELG) report. This includes SkillsActive establishing a new governance structure, reviewing business priorities, the way services are delivered, and realigning these with industry needs.

This will culminate on 1 October with the launch of a new look SkillsActive – a streamlined organisation with a single business plan and an employer-led board. We are confident these changes will enable us to better respond to employer needs and attract further funding as we present the sector to government as a key strategic partner for improving health, growing the economy and talking social inequality.

TRAINING

SkillsActive secures training match funding

SkillsActive, the sector skills council for active leisure, learning and wellbeing, has received more than £500,000 to help meet skills gaps in the playwork and fitness sectors.

The Department for Business, Innovation and Skills' Growth and Innovation Fund has awarded £278,000 through the Joint Investment Programme strand, which is matched by employers.

In total, the funding will enable more than 1,300 fitness professionals to undergo training and become specialist instructors in order to better respond to clients' needs.

SkillsActive said professionals will be able to gain behaviour change skills and customer service, which will enable them to deliver tailored interventions for inactive people.



IMAGE: PHIL MINTCHELL/GETTY IMAGES

The support will help train professionals to offer tailored interventions

Fitness Industry Association chief executive David Stalker said: "The fund offers employers the opportunity to receive up to 50 per cent funding for staff training in areas such as customer service, behaviour change and working with specialist populations."

TAG launches new 'online university'

TAG, the youth employment charity working within the active leisure sector, has launched TAG University, an online resource designed to help exercise professionals develop core business skills.

Developed in partnership with business consultants The Fit Biz Builders, the service will provide open access to foundation courses in core business disciplines such as finance/accounting, sales, marketing and operations.

Developed specifically for young professionals, the website aims to help novices learn more about business disciplines including business planning, the rudiments of marketing and an understanding of the importance of cash flow.

Fred Turok, founder of TAG said: "TAG University will provide valuable advice and guidance. This online resource is designed to



IMAGE: ORANGE LIME MEDIA/GETTY IMAGES

The university aims to teach exercise professionals core business skills

be a gateway to gaining a deep understanding of the key business disciplines.

"We know from our TAG experience that almost 40 per cent of new market entrants harbour dreams of running their own fitness business – TAG University will help bridge that gap between dream and success."

Big Pit launches new apprenticeship scheme

Big Pit: National Coal Museum in Blaenavon, South Wales, has announced that it is launching a new apprenticeship scheme in order to provide a new generation of staff for the attraction.

The new programme aims to attract aspiring young people looking to specialise in electrical

or mechanical engineering and will be run in partnership with Gower College Swansea.

For the majority of the last 20 years, the UK mining sector has relied on men trained by the National Coal Board. However, operators are now seeking new entrants to the industry.



Why not become an Instructor of HSE First Aid at Work Courses?

The Five-Day First Aid Instructor Course also includes the renowned PTLLS Level 3 Training Qualification

"...I found the Instructor Course to be excellent and a credit to your company..."
Debbie Hull (Bishops Cleeve)

Nuco Training Ltd
08456 444 999
enquiries@nucotraining.com
www.nucotraining.com
www.nucoplus.com

For all your first aid needs

Academy
OF EXERCISE STUDIES

Developing and Educating True Industry Professionals

- ✓ Diploma in Exercise Studies
- ✓ CPD Workshops
- ✓ Level 3 Personal Trainer
- ✓ Level 2 Gym Instructor

0845 835 0277


info@exercisestudies.co.uk
www.exercisestudies.co.uk

Leisure Opportunities

training
DIRECTORY

From just £534 you can access over 23,000 motivated leisure professionals for 3 months (6 consecutive insertions). Committed to the leisure industry, they are potential students for your courses

TO ADVERTISE
+44 (0)1462 471747
leisureapps@leisuremedia.com



Flexible Ways to Study at New College Durham

New College Durham is a mixed economy college delivering a broad spectrum of Further and Higher Education Courses. We currently run courses from Level 1 through to Level 5 but can run also run bespoke programmes which can be delivered on site or at your organisation.

Study Part Time on one of the following Courses:

- Active IQ L2 Certificate in Fitness Instructing (Gym/ETM) - 1 evening per week over 17 weeks
- Active IQ Certificate in Adapting Fitness Instruction for Gym Adolescents
- HNC in Sport (Health & Fitness) - 2 Evening per week over 2 years
- HNC in Hospitality Management - 2 Evening per week over 2 years
- Foundation Degree in Sport & Exercise Studies
- First Aid



Study Full Time on one of the following Courses:

- Foundation Degree in Sports Studies (2 Years)

Currently Working in the Industry?
You may also be eligible to access free training via our L2 & L3 Apprenticeships in Sport & Active Leisure (Fitness Instructing and Operational Services)

For further information or to reserve your place on one of the above courses please contact Steven Bell Curriculum Leader for Sport on (0191) 3754924.

www.newdur.ac.uk

 Apprenticeships 

Focus Training
Adding value to your staff

As an employer of fitness professionals, you'll recognise the value of investment in training them to ensure they deliver the best possible service to your membership.

Fantastic professional courses available in:

- Personal Training
- Exercise to Music
- Gym Instructor
- Step
- Studio Cycling
- Nutrition & Weight Management
- GP Exercise Referral
- And much more.

Call Focus Now:
0333 9000 222
or 01204 388330

www.focus-training.com



Are you in the running for a career in Leisure Management?

Loughborough College offers courses in Leisure, Sport, Event and Recreation Management to help you start your career, or develop your skills and managerial expertise from an existing position in the leisure industry.

Study full time, day release, block release or by distance learning, at a variety of levels; from the ISRM Fitness Management Certificate and Higher National Diploma to full Honours Degree. The Foundation Degree and Higher Professional Diploma are fully accredited by the ISRM, and lead to use of the designatory letters M.Inst.SRM.

Recruiting now for a September 2011 start.

For more information
0845 166 2950
www.loucoll.ac.uk

Loughborough
COLLEGE est. 1909

For more details on the following jobs
visit www.leisureopportunities.co.uk
or to advertise call +44 (0)1462 431385



Sports Complex Assistants, St Bede's School, East Sussex

Customer Advisors, Nexus Community, Thame, Oxfordshire

Duty Manager, Greenwich Leisure Ltd, SE London
Operations Supervisor x2, Nexus Community, Windrush

Club Membership Adviser, Central YMCA, London, West End

School Sport Managers (4 posts), Northamptonshire Sport, Northamptonshire

Sports Development Officer, University of Leeds, Leeds

Sport Centre Duty Manager, London
South Bank University, London

Lecturer/Course Leader in Sport Science, Huntingdonshire Regional College, Huntingdon

Fitness Advisors (FT / PT), Weybridge Health Club, Surrey

Experienced exercise professionals, Ten Pilates, Central London

Head of Treatments, Stoke Park Club, Stoke Poges, Buckinghamshire

Spa General Manager, Shire Hotels Ltd, Almondsbury, Bristol

Spa General Manager, Shire Hotels Ltd, Fareham

Spa Manager, Shire Hotels Ltd, Kettering, Northamptonshire

Lecturer in Football/Sports, Myerscough College, Preston, Lancashire

Fitness Instructor, Nexus Community, Chalfont St Peter, Buckinghamshire

Sales Consultant, Energie Group, Southampton

Sales executive (part time) 24 hours per week, Energie Group, Finchley

Senior Business Development Manager, Inspirit, Maidenhead

Aquatic Delivery Manager, Amateur Swimming Association (ASA), North East Region

Recreation Manager, Rhonda Cynon Taf CBC, Rhonda Cynon Taf

Recreation Manager, Rhonda Cynon Taf CBC, Rhonda Cynon Taf

Fitness Instructors, Nexus Community, Didcot / Berinsfield, South Oxfordshire

Duty Manager, Nexus Community, Didcot, South Oxfordshire

Group Marketing Manager, Fusion, London
Marketing Executive, Fusion, London

Operations Manager, Fusion, Tunbridge Wells
Fitness Consultant, Energie Group, Southampton

Receptionist, Energie Group, Southampton

Membership Manager, Energie Group, Epsom

Part Time Fitness Advisors, Energie Group, Portsmouth

Sales Advisor/Club Promoter, Energie Group, Portsmouth

Membership Sales/Prospector, Energie Group, Chesham

Part Time Health and Fitness Instructor (Gym), Tone Leisure, Churchill, Bristol

Golf Membership Sales Advisor, De Vere Hotels and Leisure Ltd

Sports Massage Therapist, Ten Pilates, London
Operations Manager, Little Venice Pilates, London

Health and Recreation Manager, Sharjah Golf and Shooting Club, Sharjah, United Arab Emirates

Class Coordinator (Part Time), University of Leeds, Leeds

Attention Personal Trainers, Club Training, Nationwide Opportunities

Lifeguard, Oxford Brookes University, Oxford

Tutors required (Personal Trainer), Personal Training Qualifications Ltd, Nationwide

Sales Executive - Hotel Leisure and Fitness Club, Renard Resources, Northamptonshire

Leisure Operations Supervisor, Renard Resources, London

General Manager, Renard Resources, Yorkshire

Health Club Manager, Renard Resources, London
Marketing Manager, Renard Resources, Yorkshire

Spa Manager, Renard Resources, London

Health and Fitness Manager, The Hogarth Group, London

Duty Manager, Greenwich Leisure Ltd, Brixton
Customer Service Supervisor (Reception), Greenwich Leisure Ltd, London

Duty Manager, Greenwich Leisure Ltd, Swiss Cottage

Duty Manager, Greenwich Leisure Ltd, Reigate and Banstead

Area Sales Manager, Greenwich Leisure Ltd, SE18

General Managers and Divisional Business Managers, Fusion, Nationwide

Senior Advertising Sales, The Leisure Media Company Ltd, Hitchin, Herts

Spa Manager, Renard Resources, London

General Manager x 3, Renard Resources, London, Southampton, Glasgow

Sales Executive - Hotel Leisure and Fitness Club, Renard Resources, Northamptonshire

Full Time Duty Officer Post, Montsaye Community College, Kettering

Health and Fitness Instructors (Gym), Tone Leisure, Taunton / Somerset

Membership Sales Consultant, Weybridge Health Club, Surrey

Spa Therapist, Virgin Active, Barbican

Senior Beauty Therapist - (Live in), Renard Resources, Bristol

Spa Therapist, Virgin Active, Staines

Spa Manager, Virgin Active, Edinburgh

Spa Manager, Virgin Active, Mill Hill

University Cricket Coordinator, University of East London, London

Leisure Assistant, The Bellhouse Hotel, Beaconsfield
Leisure Club Supervisor, The Bellhouse Hotel, Beaconsfield

Active Villages Community Coordinator, Tone Leisure, North Devon and Mid Devon

Centre Manager, Carlisle Leisure Ltd, Cockermouth

Customer Service Supervisor (Reception), Greenwich Leisure Ltd, Camden / Swiss Cottage

Swim Manager, Virgin Active, Hammersmith

Duty Manager, Bluecoat Sports Health and Fitness Club, Horsham

Operations and Attractions Manager, Warwick Castle, Warwick

Visitor Experience Manager, National Trust, St Ives

Visitor Services and Enterprises Manager, National Trust, Brownsea Island, Poole

Gym Manager, The Gym Group, Ealing

Conference and Bookings Co-ordinator, Hertfordshire Sports Village, Hatfield

Swimming Teacher, Virgin Active, Mill Hill

Visitor Services and Enterprises Manager, National Trust, Brownsea Island, Poole

Visitor Services and Enterprises Manager, National Trust, Brownsea Island, Poole

Assistant Manager Sales and Service, Greenwich Leisure Ltd, Swiss Cottage, London

Assistant Manager Sales and Service, Greenwich Leisure Ltd, North London

General Manager, Greenwich Leisure Ltd, Hillingdon

Senior Recreation Assistant, Greenwich Leisure Ltd, Various Locations

Recreation Assistant (Lifeguard), Greenwich Leisure Ltd, Camden / Ealing / Kentish Town / Westminster

Lifeguards, Virgin Active, Nationwide

Assistant Manager Sales and Service, Greenwich Leisure Ltd, North London

Administration Manager, Greenwich Leisure Ltd, Borough of Westminster

StreetGames National Development Mgr (Operations), StreetGames UK Ltd, London or Manchester

Assistant Manager Sales and Service, Greenwich Leisure Ltd, City of Westminster

Assistant Manager Operations, Greenwich Leisure Ltd, Westminster

Sales and Fitness Supervisor, Greenwich Leisure Ltd, Woolwich SE18



**we only
want the
best.**

**are you
still reading?**

General Managers and Divisional Business Managers

At Fusion Lifestyle we are passionate about our business and we are determined to be the best operator in our sector. Our business has an outstanding trading history and a ten year unbroken record of profit. Through a planned and managed programme of growth we have developed an industry leading portfolio including investments in excess of £100m in the last 4 years.

The most exciting times are ahead and the very **best sector leaders are required** to help shape and develop our business. We have a clear focus on delivering the very best services to our customers and setting a new standard in the leisure industry.

If you have the desire to be part of our high-performing team and the determination to make a difference then we would like to hear from you.

We will offer the best packages to the very best candidates who will be fortunate enough to work across one of the most diverse facility portfolios in the leisure sector.

Please send your CV to fusion@easywebrecruitment.com
Closing date: 14th August 2011

www.fusion-lifestyle.com



Shaping futures

LECTURER/COURSE LEADER IN SPORT SCIENCE (0.8 FTE)

Salary £22,248 to £28,198 pro rata per annum

Huntingdonshire Regional College Sport Science Department are looking for someone to join our dynamic and innovative team. The Sports team are hard working in the quest to facilitate learning and the development of knowledge through teaching, sport participation and coaching in the wider community.

You will teach both Level 3 and Level 2 students on BTEC Sport Science, and where appropriate, on short/professional courses specifically in the field of sports. You will work to develop links with teams, clubs and local sports providers. The successful candidate will have a teaching qualification and an honours degree in a sport related subject. Previous experience of working with young adults and knowledge of current issues within the field of Sports and Exercise Science would be an advantage.

If you would like further details please contact Kim James on 01480 379191, or visit our website at www.huntingdon.ac.uk

Closing date for applications: Thursday 18th August 2011

We welcome applications from all members of the community on an equal basis. All successful applicants will undertake a Disclosure CRB Check and evidence of proof to work in the UK will be required.

California Road,
Huntingdon,
Cambs PE29 1BL



Learn, Succeed and be Outstanding Together

If you have enthusiasm and commitment then we want to see you - and you'll want to join us.

Great opportunities

www.myerscough.ac.uk/jobs

Lecturer in Football/Sports

To deliver football and sport related topics to courses at all levels. BA (Hons) or BSc (Hons) in a sport related discipline or equivalent essential. A teaching qualification with experience of Further or Higher Education delivery is desirable. Salary: £17,272 - £24,907 per annum.

For an application pack please contact the HR Team on 01995 642289 or email hr@myerscough.ac.uk

Closing Date:
Thursday 18 August 2011.

The College is committed to safeguarding and promoting the welfare of all learners and expects all staff to share this commitment.



leisureopportunities

news & jobs updated daily online

YOUR 1ST CHOICE FOR RECRUITMENT & TRAINING

NEXT ISSUE

23rd August 2011

BOOK BY NOON ON

Weds 17th August 2011

TO ADVERTISE, Contact the Leisure Opportunities team on
t: +44 (0)1462 431385
e: leisureoops@leisuremedia.com



Group Marketing Communications Manager

Bournemouth, Salary: c£42,000

BH Live is a leisure and cultural trust established in 2010 to promote participation in leisure, culture and events across 6 sites including the nationally recognised Bournemouth International Centre (BIC), the Grade II listed Pavilion Theatre and the award winning Littledown Centre. Our aim is now to build on our success and firmly establish BH Live as a leading organisation in the sector and secure a national reputation for excellence.

When you join BH Live as the Group Marketing Communications Manager you will have the rare opportunity to help shape our entire marketing agenda promoting BH Live both locally and to a national audience. You will provide a strategic direction for marketing and communications activity across the whole organisation. This exciting role will champion innovation and excellence in all aspects of brand development, marketing and promotions, communications, media/PR and stakeholder relations, audience development, CRM, social network mediums and corporate sponsorship.

If you have the experience and ambition to join our exciting organisation, are a fully qualified Marketing or Communications professional and above all have the ability to inspire and lead a dedicated team, please apply by sending your CV and a covering letter to recruitment@bhlive.co.uk. For an informal discussion please call Peter Gunn, Chief Executive on 01202 456430.

For further details please go to www.bhlive.co.uk.

Closing date: Friday 2 September 2011. Interviews will be held during the week beginning 12 September 2011.

SP

Sportspark

UEA

University of East Anglia

Director of Sport • Ref: ALC230

£54,133 to £57,431 per annum

The Sportspark at the University of East Anglia is one of the largest sports complexes in the UK. Built and developed by the University over the last 10 years, our wide-ranging facilities include a 50m swimming pool, a Soccerpark, an Athletics Track, two impressive indoor arenas and a new Gymnastics Centre (opening September 2011). The Sportspark operates on a commercial basis, using income from users to cover operating, maintenance and development costs.

The Director of Sport will lead the development, promotion and delivery of sporting activity for the University and the local community, and will be responsible for maintaining its excellent reputation and long-term financial viability.

Along with a degree in Physical Education or Leisure Management, or equivalent qualifications and experience, you will have experience of managing a major multisport complex with wet/dry and external facilities, preferably in a higher education environment. You will also have significant staff and financial management experience. This appointment will be subject to a criminal record check from the Criminal Records Bureau.

Closing date: 12 noon on 8 September 2011.

Further particulars and an application form are available on our website: www.uea.ac.uk/hr/jobs/ or Tel. 01603 593493.



Ealing Squash and Fitness Club

Haven Green



DUTY MANAGER

Salary: £18 000p/a Hours: 45hrs/ week

Ealing Squash & Fitness Club is looking for an enthusiastic, self-motivated and flexible individual who is committed to delivering excellent customer service.

The individual will be responsible for day to day management of this Club.

You will need to possess a relevant professional qualification, at least 1 year management/supervisory experience and be prepared to work shifts and weekends.

The facility offers 3 floors of state of the art gym, a studio, 2 squash courts and a bar.

To apply for this position please send your cv to Ada at ada@ealingsfc.co.uk.

MEMBER SERVICES MANAGER

Reebok Sports Club London Salary-OTE £28k

The Reebok Sports Club London is widely regarded as London's premium Health Club, Restaurant and Spa. We are currently recruiting for a Member Services Manager. The successful applicant will have responsibility for the Duty Manager and Reception Team and ensuring excellent customer service is delivered at all times. They will oversee all aspects of operations in the absence of the General Manager.

GROUP EXERCISE MANAGER

Reebok Sports Club London Salary-OTE £35k

We are also recruiting for a Group Exercise Manager to manage our vibrant

innovative class timetable across 6 studios in our 100,000 square foot club. The successful applicant will have the responsibility for the running over 160 Classes and Master Classes per week through the recruiting, training, performance managing a team of over 40 employed and self employed instructors.

Please send your covering letter and CV to Ben Lewis: ben.lewis@reebokclub.co.uk

Reebok
SPORTS CLUB

leisure opportunities joblink

Book a joblink with us and we'll put your logo and company name on every page of the Leisure Opportunities website www.leisureopportunities.co.uk

This advert will have a hyperlink to your website, where you can list all the job vacancies in your company.



Go to www.leisureopportunities.co.uk and click on the link to see the latest jobs from...



TO BOOK Call: +44 1462 471747 and start getting applications for your jobs IMMEDIATELY!

Go the extra mile. Organise one!

Organise a Sainsbury's Sport Relief Mile in your community - there's no better way to take part in the UK's biggest year of sport. We'll help you every step of the way. www.sportrelief.com/the-mile

SR12/028 Photos: Aile Hitchcock, Victoria Davis, Ian Tuttle. Sport Relief is an initiative of Comic Relief, registered charity 325668 (England & Wales), SC039730 (Scotland)

Scottish group unveils new venture

Stefan King of Scotland-based G1 Group Holdings has launched a new leisure company – EH1 Limited – in partnership with fellow entrepreneur Kenny Waugh of Festival Group.

The business has assumed ownership of leisure assets in Edinburgh including Biddy Milligans and Grassmarket Hotel; Bank Hotel; and the Murrayfield Hotel.

Waugh has become chair of EH1 under the terms of the agreement, as well as receiving a seat on the board of the company that oversees G1's core assets. The formation of EH1 aims to strengthen G1's existing portfolio and also help the company to expand its presence along the east coast of Scotland.



EH1 is now owner of both Biddy Milligans and the Grassmarket Hotel

King said: "I've been keen to work with Kenny for some time and I am pleased to be able to join him in strengthening Edinburgh's leisure market."

Rank Group outlines plans for casino business

Rank Group has announced its medium-term development plan for the Grosvenor casino arm, which will include three brand new casinos across the UK over the coming year.

A G Casino-branded venue for Stockton-Tees is due to open in September, while an

additional two – South Manchester and New Brighton, Merseyside – will open in 2012.

Meanwhile, three casinos have undergone conversions, with Walsall and Plymouth unveiled earlier this year. The third – Cardiff – is due to be launched this month.

Box office revenues hit 'record' high

UK cinemas saw box office earnings grow nearly 5 per cent to a "record" high of £988m in 2010, according to the British Film Institute's (BFI) 2011 Statistical Yearbook.

The increase in revenues compared with 2009 was achieved despite a 2.4 per cent fall in admissions, which were affected by poor winter weather and the summer World Cup.

The BFI's 2011 Statistical Yearbook has also reported that the number of screens in the UK increased to 3,671 across 716 venues, with 1,067 capable of digital 3D screenings.

In addition figures for last year, the BFI has posted a 0.7 per cent growth in admissions for the first half of 2011 – the second highest half-year total in the last five years.

BFI chief executive Amanda Nevill said: "The numbers and trends in this latest Yearbook, brought up to date by the half year production



Cinema takings were up despite a fall in admissions

and box office figures for 2011 so far, tell a story of mixed fortunes in British film.

"Overall, it is holding up remarkably well, with more people watching more film, an increase in inward investment and significant activity in low budget filmmaking."

- ACE +44 (0)1669 631 210
www.acerprises.org.uk
- Arts & Business +44 (0)20 7378 8143
www.aandb.org.uk
- ALVA +44 (0)20 7222 1728
www.alva.org.uk
- Arts Council +44 (0)20 7333 0100
www.artscouncil.org.uk
- ASVA +44 (0)1786 475152
www.asva.co.uk
- BALPPA +44 (0)20 7403 4455
www.balppa.org
- BHA +44 (0)845 880 7744
www.bha-online.org.uk
- BICM +44 (0)845 217 1811
www.bicm.co.uk
- BISL +44 (0)20 8780 2377
www.bisl.org
- CCPR +44 (0)20 7976 3900
www.ccpr.org.uk
- CMAE +44 (0)1334 460 850
www.cmaeurope.org
- Countryside Agency +44 (0)1242 521381
www.countryside.gov.uk
- CPRE +44 (0)20 7981 2800
www.cpre.org.uk
- English Heritage +44 (0)870 333 1181
www.english-heritage.org.uk
- FSPA +44 (0)2476 414999
www.sportsandplay.com
- FIA +44 (0)20 7420 8560
www.fia.org.uk
- HHA +44 (0)20 7259 5688
www.hha.org.uk
- IAAPA +1 703 836 4800
www.iaapa.org
- IEAP +44 (0)1403 265 988
www.ieap.co.uk
- Institute of Hospitality +44 (0)20 8661 4900
www.instituteofhospitality.org.uk
- ISPAL +44 (0)845 603 8734
www.ispal.org.uk
- LPF +44 (0)1462 471932
www.leisureprop.com
- LMCA +44 (0)1278 436910
www.lmca.info
- MLA +44 (0)20 7273 1444
www.mla.gov.uk
- NPFA +44 (0)20 7833 5360
www.playing-fields.com
- People 1st +44 (0)870 060 2550
www.people1st.co.uk
- REPs +44 (0)20 8686 6464
www.exerciseregister.org
- SAPCA +44 (0)24 7641 6316
www.sapca.org.uk
- Sports Aid +44 (0)20 7273 1975
www.sportsaid.org.uk
- Sport England +44 (0)8458 508 508
www.sportengland.org
- Springboard +44 (0)20 7497 8654
www.springboarduk.org.uk
- SkillsActive +44 (0)20 7632 2000
www.skillsactive.com
- Tourism Management Institute +44 (0)1926 641506
www.tmi.org.uk
- Tourism Society +44 (0)20 8661 4636
www.tourismsociety.org
- VisitBritain +44 (0)20 7578 1000
www.visitbritain.com
- World Leisure +1 250 497 6578
www.worldleisure.org