

leisure opportunities

23 AUGUST - 5 SEPTEMBER 2011 ISSUE 561

Daily news & jobs: www.leisureopportunities.co.uk

Visions of China set for Rotherham

Plans for a major new cultural visitor destination – Visions of China – in Rotherham have been unveiled by the partnership behind the scheme.

The £100m+ project is being headed by China Vision chair Dr Lee Kaihung and joint CEOs Peter Moore and Steven Byrne of regeneration group MCD Developments.

Speaking to *Leisure Opportunities*, Moore said that the 120-acre (49-hectare) cultural theme park would bring the “finest faces” of China to a UK and western audience.

The destination will see visitors enter through the Great Wall onto a Chinese-inspired street offering retail; food and beverage; and information outlets.

Experiences will include an oriental spa and centre of wellbeing offering acupuncture; holistic therapies; and meditation alongside



Visions of China will be developed on the ex-Pithouse West colliery site

“more recognised” treatments. The spa will be sited amid 15-20 acres (6-8 hectares) of water gardens built by “eminent Chinese landscapers” and inspired by the city of Suzhou.



IMAGE: ENGLISH HERITAGE

Wrest Park is to benefit from a 20-year overhaul

Wrest Park reopened by English Heritage

A new visitor centre, learning space and restored gardens have been opened to the public by English Heritage at Wrest Park, Bedfordshire, following a £3.8m revamp.

The work has formed the first phase of a 20-year restoration programme for the historic location, which has been part-funded with the help of a £1.14m grant from the Heritage Lottery Fund.

English Heritage's revival of the estate has included bringing the gardens back to their early 20th century appearance, before the de Grey family sold Wrest Park in 1917.

Joint venture nets Olympic Village

A joint venture comprising Delancey and Qatari Diar has signed an agreement worth £557m for the purchase and long-term management of London's Olympic Village.

The Olympic Delivery Authority (ODA) has announced that the joint venture will now work in partnership with Triathlon Homes, which is managing the site's affordable housing.

Under plans for the Olympic Village after the 2012 Games, more than 2,800 new homes are to be made available – 1,439 of which will be managed by the joint venture. The agreement will also see Delancey and Qatari Diar secure six adjacent development plots that will provide a potential 2,000 additional homes.



IMAGE: JEFFREY MATHIAS

Delancey and Qatari Diar is to manage 1,439 homes

In addition to the homes, the Olympic Village neighbourhood will be supported by more than 10 hectares (25 acres) of new parkland and more than 30 independent shops, cafés and bars.

Host announced for Health Club Awards

Mark Durden-Smith has been named as host of the first ever Members' Choice Health Club Awards, taking place on 21 September at Hilton Birmingham Metropole NEC.

Famous for his ITV2 coverage of *I'm A Celebrity Get Me Out Of Here*, Durden-Smith previously presented *Sky Sports Centre* and was the front man of Sky's Bafta-winning rugby union coverage from 1997.

Durden-Smith said: “I'm especially excited to be asked to help out with the Health Club Awards as they are voted for by us gym users.”

**GET
LEISURE
OPPS**

Magazine sign up at
leisureopportunities.co.uk/subs

Job board live job updates
leisureopportunities.co.uk

PDF for iPad, Kindle & smart phone
leisureopportunities.co.uk/pdf

Ezine sign up for weekly updates,
leisureopportunities.co.uk/ezine

Online on digital turning pages
leisureopportunities.co.uk/digital

Instant sign up for instant alerts,
leisureopportunities.co.uk/instant

Twitter follow us:
[@leisureoppsjobs](https://twitter.com/leisureoppsjobs)

RSS sign up for job & news feeds
leisureopportunities.co.uk/rss

Contacts:

The Leisure Media Company
Portmill House, Portmill Lane,
Hitchin, Herts SG5 1DJ, UK
Tel: +44 (0)1462 431385
Fax: +44 (0)1462 433909
e-mail: please use contacts'
fullname@leisuremedia.com

Subscriptions

Denise Gildea 01462 471930

subs@leisuremedia.com

Editor

Liz Terry 01462 431385

Managing Editor

Tom Walker 01462 471934

Assistant editor

Pete Hayman 01462 471938

Design

Ed Gallagher 01905 20198

Internet

Dean Fox 01462 471900

Tim Nash 01462 471917

Publisher

Julie Badrick 01462 471919

Associate publishers

Paul Thorman 01462 471904

Simon Hinksman 01462 471905

Account Manager

Sarah Gibbs 01462 471908

Property desk

Simon Hinksman 01462 471905

Spa Opportunities & business

development, attractions and museums

Annie Lovell 01462 471907

Financial Controller

Sue Davis 01395 519398

Financial Administrator

Denise Gildea 01462 471930

Circulation Manager

Michael Emmerson 01462 471932

Subscribe to Leisure Opportunities,

Online: www.leisuresubs.com

Email: subs@leisuremedia.com

Tel: +44 (0)1462 471913

Annual subscription rates are UK £31,
Europe £41, Rest of world £62, students UK £16.

Leisure Opportunities is published fortnightly by
The Leisure Media Company Limited, Portmill
House, Portmill Lane, Hitchin, Herts SG5 1DJ, UK
and is distributed in the USA by SPP, 75 Aberdeen
Road, Emigsville, PA 17318-0437. Periodicals
postage paid @ Manchester, PA POSTMASTER
Send US address changes to Leisure Opportunities,
c/o PO Box 437, Emigsville, PA 17318-0437.

The views expressed in print are those of the author
and do not necessarily represent those of the
publisher The Leisure Media Company Limited.
All rights reserved. No part of this publication
may be reproduced, stored in a retrieval system or
transmitted in any form or by means, electronic,
mechanical, photocopying, recorded or otherwise
without the prior permission of the copyright
holder. Printed by Warners Midland plc.

© The Leisure Media Company Limited 2011
ISSN 0951/8210

SPORT

Sporting event attendances increase

New PricewaterhouseCoopers (PwC) analysis has revealed that total attendances for some of the UK's largest annual sporting events have reached "record" highs in 2011.

According to PwC, the top four events – Wimbledon, the British Formula One Grand Prix, Royal Ascot and the Cheltenham Festival – all saw increases in the total number of people attending this year.

Wimbledon and the British Formula One Grand Prix – attracting nearly 495,000 and 315,000 visitors respectively – were both reported to have experienced their best ever years in 2011, while the Open Championship; Moto GP; the Grand National; and the Epsom Derby also featured on PwC's list of top 10 sporting events by attendance.

PwC UK head of sport Julie Clark said: "Despite uncertainties around the strength of



The British Grand Prix experienced its 'best ever year' for attendances

the UK's economic recovery, these figures demonstrate the sustained appetite for live sport.

"The public continue to be attracted to the live experience and sense of occasion offered by the highest profile sporting events; a trend confirmed by the huge demand for tickets to the London 2012 Olympic Games."

New code to tackle homophobia in sport

Major UK sports have signed up to the Government Equalities Office Charter on Homophobia and Transphobia in Sport.

The organisations – Sport England, Sport Northern Ireland, Sport Scotland, Sport Wales and UK Sport – have come together to address

issues affecting participation by lesbian, gay, bisexual and transgendered people.

The charter outlines the importance of creating an environment where everyone is able to participate and enjoy sport, whoever they are and whatever their background.

New £24m National BMX Centre unveiled

The new £24m National BMX Centre – comprising the UK's first indoor permanent BMX track – has opened its doors to the public at the National Cycling Centre, Manchester.

Ellis Williams Architects were behind the design of the 110,000sq ft (10,219sq m) venue, which was built by Sir Robert McAlpine and is run by The Velodrome Trust.

Facilities include permanent seating capacity for 2,000 spectators, with potential for a further 1,000 temporary seats for large events. Designed for elite and community use, the new National BMX Centre also boasts two start ramps – 5m and 8m high respectively – and 22 transponder timing loops. AFL Architects coordinated delivery of the centre's track.



The £24m complex houses the UK's first indoor permanent BMX track

The cost of the building itself was £19m, with an additional £5m spent on public realm work surrounding the complex – including a footbridge to the new Metrolink stop.

£31m Redcar plans move forward

Detailed plans for a new £31m leisure, business support and community facility in the heart of Redcar have been submitted to the local planning authority for consideration.

Outline plans drawn up by S&P Architects and Plus3 Architects were given the green light by Redcar and Cleveland Borough Council (RCBC) earlier this summer.

Middlesbrough-based Buckler Demolition has already started work to clear the site at Kirkleatham Street and Coatham Road, which will be the location for the development.

Facilities will include a six-lane, 25m swimming pool; a training pool; and a leisure pool, as well as a dance and performance space; a fitness suite and junior gym; and a sports hall.

Business space for small-to-medium-sized firms and community facilities also form



The £31m development has been designed by S&P and Plus3 Architects

part of the scheme, along with public spaces. Willmott Dixon is the lead contractor.

RCBC cabinet member for economic development Mark Hannon said: "The development will provide state of the art fitness, business and community facilities for residents and visitors to Redcar."

£3m Bath sports hall plans submitted

Bath and North East Somerset Council (BANES) has submitted a new planning application for the construction of a £3m dual-use sports hall at the city's Wellsway School.

Boyes Rees Architects are behind the design of the facility, which forms part of the council's strategy to improve school buildings across the area and will be located on a site adjacent to an existing synthetic turf pitch.

The 1,878sq m (20,215sq ft) facility will incorporate a six-court sports hall; a 73sq m (786sq ft) gym; and an activity



The venue will be built on a site next to an existing synthetic turf pitch

space. Members of the local community will also be able to make use of the sports hall in addition to school pupils and staff, with public access proposed for out-of-school hours.

BANES' Nathan Hartley said: "[The proposals] will help to change the lives of young people through providing sports facilities of the highest possible standard."

Herne Hill Velodrome renovation work commences

British Cycling has revealed that work has now commenced on the repair of the dilapidated track at Herne Hill Velodrome, South London – the last remaining 1948 Olympic venue.

The project – due to take six weeks to complete – is the first work to be carried out after

a 15-year lease was signed between owner The Dulwich Estate and British Cycling.

Funding for the scheme has been provided through the national governing body's Whole Sport Plan and a financial bequest from local resident Leonard Lyes, who died in 2009.

Oldham Athletic FC secures council deal

Oldham Athletic Football Club's Boundary Park stadium is to undergo a redevelopment after a "historic" agreement was reached with the local authority.

The deal, which aims to safeguard the future of the npower League One club, paves the way for a new North Stand is to be developed at Boundary Park.

It follows the collapse of the club's proposed relocation to the Lancaster Club site in Failsworth, which is now to be acquired by the Oldham Council with a view to delivering a major leisure-led scheme.



Hammersmith Park will house the £2.1m facility

New £2.1m football centre set for Shepherd's Bush

A new £2.1m football complex is to be built in Shepherd's Bush after councillors agreed to appoint Sport and Leisure Group (SLG) as the preferred bidder for the scheme.

It is proposed that SLG – trading as PlayFootball.net – is to construct 11 synthetic pitches, including eight five-a-side and three seven-a-side and a basketball court at the Hammersmith Park site.

Plans are now due to be submitted later this summer, with the new facilities to open in spring 2012 to replace an existing dilapidated all-weather pitch at the site.

Sport NI launches small grants programme

Sport Northern Ireland has announced that its Awards for Sport Programme initiative is now open to applications.

The small grants scheme aims to increase participation in physical recreation, especially among under-represented groups, and is open to clubs, governing bodies of sport and voluntary or charity organisations.

Grants range from £1,000 to £10,000 and are intended to cover expenses such as coaching fees, coach education and facility hire. Applications must be submitted no later than 12 noon on 26 September.

Sutton facilities in line for major refurbishment

Sutton Council has announced that two facilities – Cheam Leisure Centre and Sutton Arena, London – are to benefit from a joint £950,000 refurbishment.

Everyone Active – the trading name of Sports and Leisure Management (SLM) – is funding the schemes, which will see Cheam Leisure Centre receive a £600,000 makeover, including a new gym entrance.

The remaining £350,000 will be invested in extending the gym at Sutton Arena. Both schemes to be completed ahead of an £11m rebuild of Westcroft Leisure Centre.



Tim Brabants (second left) unveiled the facility

New-look gym for London college facility

Ethos – the sports centre at Imperial College London, South Kensington – has reopened its Energia fitness suite, following the completion of a major refurbishment.

Work at the venue has included the reconfiguration of the gym's layout and the installation of Matrix Fitness' Virtual Active suite of interactive video-based cardiovascular workouts.

Users can also benefit from the ability to develop tailored fitness programmes with the help of an on-screen personal trainer using the MyRide indoor cycling system.

£12m Matlock leisure centre nears opening

Derbyshire Dales District Council has revealed that Arc Leisure Matlock – a new £12m complex designed by Dyer – is to open for the first time on 24 August.

Built by Morgan Sindall and project managed by Drivers Jonas Deloitte, the facility will replace Matlock Lido and comprise an eight-lane, 25m regional competition-standard swimming pool.

A 50-station fitness suite fitted with cardiovascular and resistance equipment, such as Kinesis One and Cardio Wave, is also among facilities at Arc Leisure Matlock.

New sports centre for Camden

A new sports centre is among the facilities to be developed in King's Cross, London as part of a wider scheme by Camden Council to provide a range of services at one site.

Three Pancras Square is to house other council-run operations, such as a library and a customer contact centre, under LA Architects-designed proposals for the building.

Initial plans for the two-floor sports facility include a 25m, five-lane swimming pool with an adjustable floor and a small teaching lagoon-style pool for non-swimmers and families.

A poolside spa area with sauna and steam-room; a fitness suite to incorporate more than 100 stations; and two group exercise studios are also included in the initial proposals.

Camden Council has now signed contracts with the project developer, King's Cross Central



Camden Council has now signed contracts with the project developer

Limited Partnership, with reserved matters plans due to be submitted for consideration.

A council spokesperson said: "The sale or termination of leases at seven existing buildings will pay for the building and means the council can create new facilities for the community at no additional cost to taxpayers."

Entrepreneur to rebrand ex-Esporta site

Entrepreneur Mo Chaudry – owner of the Water World theme park in Stoke-on-Trent – has acquired the city's former Esporta Health Club.

Chaudry had been a member at the club for 11 years and was already planning to start his own fitness business when he learned that the health club was destined for closure.

"I had been exploring opportunities to develop my own health and fitness business for a while and my plans were well advanced but the prospect of owning and operating a club that I personally have many connections to seemed a natural business opportunity," he said.

Chaudry confirmed that he plans to keep the existing range of facilities at the 35,000sq ft



Chaudry is to launch the remodelled and rebranded club in September

(3,252sq m) club – including a spa – but is also looking to add new services to create an "up-market, high-class facility" appealing to the discerning health club member. The rebranded club is expected to open in September.

Rebranding for Stockport Sports Trust

North West England-based Stockport Sports Trust has confirmed that it is to be renamed as Life Leisure as part of the organisation's wider strategy for future growth.

The new brand is expected to launch on 1 October when the trust takes over management

of Stockport's Grand Central Pools from current operator Serco Leisure.

Andrea Pankiw, the trust's business development manager, said: "We are now in a position to potentially move our model into facilities nationwide when the opportunity arises."



"Now I can track my fitness plan or book a personal training session instantly."

Darren Masters, online at The Sports Centre with The Cloud

Increase customer loyalty with **FREE Wi-Fi***

Join the UK's largest public Wi-Fi network and get your customer experience in shape

With a Wi-Fi system that's flexible, easy to manage and super-reliable, you and your customers can get the most from your marketing strategy.

Make your business work smarter

Use Wi-Fi from The Cloud to:

- **Increase loyalty** with effective customer service programmes
- **Create business zones** to help people mix fitness and work
- **Improve scheduling** of classes and personal training
- **Cross-sell products and services** based on customer insight
- **Keep customers updated** with events and promotions

Make your customers happy

Work or pleasure. Smartphone, tablet or laptop. Your customers can surf, stream, share – and stay connected with a Wi-Fi service that's **free, fast** and **easy** to connect to in seconds.

Get free Wi-Fi* working for your business, call now on
0845 333 0400
or visit thecloud.net

quoting reference Leisure Opportunities Magazine



Wi-Fi Powered by
The Cloud

A BskyB owned company

*The service is free to end users subject to payment of a set up and periodic fees from you, the venue, to The Cloud for the provision of services. Equipment (including router) remains the property of The Cloud. Available to customers in The Cloud's network area in the UK, subject to premises location and a minimum term. End user and further terms apply. Correct at July 2011.

Leisure businesses count the cost of UK disorder

High street-based leisure facilities have been among those damaged in this month's violent unrest, which affected UK cities.

A Fitness First spokesperson said that its clubs in the worst hit areas of London – Tottenham, Croydon and Clapham – had been closed until further notice but added that all other clubs had reopened.

Tony Orme, marketing director for LA Fitness, revealed that while rioting had had little effect on its operation, it had shut sites early in London, Manchester, Birmingham and Liverpool on police advice.



The venue will be used by London 2012 hopefuls

New performance gym opens at Bath University

A new £100,000 performance gym has been unveiled at the University of Bath to help boost the preparations of London 2012 Olympic and Paralympic hopefuls.

The university worked with the English Institute of Sport; Sport England; TASS; and UK Sport to provide the project, which is an extension to an existing venue.

An integrated testing platform to provide in-depth physical analysis; video feedback system; and a system providing feedback on strength and power outputs are on offer at the new performance facility.

£500k revamp for Suffolk's Brandon Leisure Centre

A leisure centre in Brandon, Suffolk, is to receive 40 stations of new Technogym equipment as part of a £500,000 refurbishment to be carried out at the venue.

Forest Heath District Council is funding improvements at Brandon Leisure Centre, which will see the existing bowls area transformed into a new fitness studio and the modernisation of the changing facilities.

A multi-activity area will also be provided, with the studio able to 'double up' as a function facility with the bar lounge, which will be converted to a café bar. Createability is working on the scheme.

Charity reveals exercise benefits

A report by Macmillan Cancer Support has claimed that a lack of physical activity may be putting around 1.6 million cancer survivors at risk of long term health issues.

Move More found that breast cancer patients' risk of recurrence and of dying from the disease can be reduced by up to 40 per cent through "recommended" amounts of exercise – 150 minutes of moderate activity a week.

The risk of prostate cancer sufferers dying from the illness can be cut by 30 per cent with a "recommended" amount of physical activity, while the risk to bowel cancer patients' risk can be cut by up to half with "significant" levels of physical activity – around six hours of moderate intensity activity a week.

The fourth finding was that all cancer sufferers can reduce the risks of side effects – such



Exercise can help cancer patients reduce the risk of dying or recurrence

as fatigue, depression and heart disease – by doing the recommended amount of exercise.

Macmillan Cancer Support chief executive Ciaran Devane said: "Cancer patients would be shocked if they knew just how much of a benefit physical activity could have on their recovery and long term health."

Longer living through 15 minutes exercise

One of the largest mass studies on the benefits of exercise has revealed that just 15 minutes of physical activity a day can boost a person's life expectancy by up to three years.

Taiwan's Department of Health carried out research between 1996 and 2008 and involved 416,175 individuals in standard medical screening programmes, with people placed into one of five categories of exercise volumes.

The results of the study were published in the medical journal, *Lancet*, and showed that, when compared with the 'inactive' group, those in the 'low-volume' group who exercised for an average of 15 minutes a day had a 14 per cent reduced risk of all-cause mortality and a three year longer life expectancy.



15 minutes of activity a day can prolong life expectancy by three years

Each additional 15 minutes of daily exercise beyond the initial 15 minutes further reduced all-cause mortality by 4 per cent and all-cancer mortality by 1 per cent. These benefits were applicable to all age groups and both sexes.

BMF launches new 'fitness holiday'

A week-long 'fitness holiday' based at Las Playitas, Fuerteventura, Spain – Sunfit Outdoor Fitness Holidays – has been unveiled by British Military Fitness (BMF).

Sunfit has been designed for individuals or groups and offers a range of fitness classes and

seminars led by a mix of BMF instructors and others selected by the training company.

BMF's Sarah King said: "Each session will be designed specifically for beginner level right through to the more advanced level. There will definitely be something for everyone."



CARTOON NETWORK™



**WE KNOW WHY ADVERTISING
ON OUR KIDS CHANNELS IS SO
SUCCESSFUL...**

...find out
at LIW

Cartoon Network are
exhibiting for the first
time ever at LIW 2011!



**Register for your FREE
ticket at www.liw.co.uk**

and quote LOA1 to avoid the £30 onsite admission fee

**LEISURE
INDUSTRY WEEK**

20-22 Sept 2011 · NEC Birmingham UK

New policies needed to stimulate growth



UFI IBRAHIM
is chief executive of
the British Hospitality
Association

I recently wrote to the Prime Minister telling him that growth targets for the UK hospitality sector – and for tourism generally – will not be met without government action. Why? Because the right framework has not been created, barriers to growth have been maintained and, worse, new ones have been erected.

The industry's state of uncompetitiveness with other EU member states is clearly damaging UK tourism. Visa controls are a significant deterrent for potential visitors; the Regional Growth Fund appears so far completely ignored the hospitality and tourism industry; and the introduction of Local Enterprise Partnerships in England gives us little confidence that the industry will be recognised for what it is.

These issues prevent us from creating the 236,000 jobs that we forecast last year could be created in hospitality. The high rate of UK VAT on hotel accommodation and attractions creates the most significant barrier to growth. But there are other barriers. In a 2010 survey by the European Tour Operators Association (ETOA), 58,000 tourists cancelled trips to the UK in 2009 due to slow visa processing; ETOA estimates nearly 314,000 did not even apply.

So when you ask why Britain is the 22nd most popular destination for Chinese tourists – lower than France, Italy and Germany for example – the answer is easy. We make it too difficult for many non-EU residents to visit Britain. Does the government recognise the damage that these policies inflict on UK tourism? For example, international tourism is moving out of recession. The number of world arrivals grew by 6.6 per cent in 2010 compared with 2009. But in the UK, the number marginally declined.

At this rate, we will not reach Mr Cameron's objective of Britain returning to the top five tourist destinations in the world, nor his objective to grow domestic tourism from 40 per cent to 50 per cent of total tourism spend by UK residents. What the industry needs are policies which encourage, stimulate and reward growth; without them, its potential will not be fulfilled. This would simply be a waste – a waste that the country cannot afford.

HOTELS

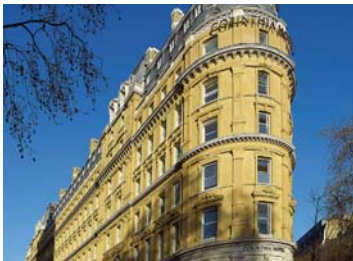
London puts Corinthia 'on the map'

Corinthia Hotels director Simon Naudi has revealed how the opening of the new £305m flagship property in London earlier this year will help shape the company's global expansion plans.

In an interview with *Leisure Management* (Issue 3, 2011), Naudi said Corinthia Hotel London "will give us a different platform of visibility" and put the group "on the map".

Located in the centre of the capital, the 294-room is housed in a building formerly occupied by the Ministry of Defence and includes a 3,300sq m (35,521sq ft) ESPA Life spa – a new concept from management and skincare group ESPA.

Facilities also include Massimo Restaurant and Oyster bar headed up by Massimo Riccio; a British-inspired eatery run by Garry Hollihead; and the Bassoon bar.



Corinthia Hotel's flagship London property launched earlier this year

Following the London launch, Naudi said that the company's focus may now alter: "In the early days, [founder] Mr Pisani followed real estate opportunities and our brand followed.

"As we grow, we are becoming more brand driven to drive occupancies and especially to drive the rate."

SmartDiner system to boost restaurant bookings

A new online restaurant booking system, which is designed to help operators incentivise and increase reservations during quieter periods of the day or week, has been unveiled.

SmartDiner's new website has been launched for the Harrogate market this month, with

a full, national launch due to take place at October's Restaurant Show in London.

The system aims to help restaurants attract customers at certain times or days through money-saving incentives, while also offering flexibility to optimise capacity usage.

Travelodge eyes National Park expansion

Budget hotel chain Travelodge has announced its plans for a 37-property, £135m expansion of its estate into National Parks across the UK in response to "high customer demand".

The group indicated that an growing trend in staycations and a "surge" in the number of UK residents taking a rural holiday in the past year had prompted its latest move.

Travelodge's property team has now been instructed to seek out 37 new locations near to 15 National Parks, including Aviemore (Cairngorms) and Betws-y-Coed (Snowdonia).

The size of the proposed hotels will vary from between 30 – under the group's Metro brand – and 100 bedrooms, which will depend on the location and building requirements.



Travelodge already has one location within the Lake District at Kendal

Travelodge's Guy Parsons said: "As more Britons explore the UK, they are rediscovering new holiday hotspots and as a result, we have seen a significant surge in rural breaks."



Pilates for Everyone with Stott Pilates

Stott Pilates' vice president of Full Solutions, Carol Triocoe, will provide instruction on determining how to best design and market Pilates offerings to meet the needs of individual membership. The interactive session will provide delegates with strategic marketing tools to equip them to attract specific target groups to their organisation.

From athletes to new mums, post-rehab exercisers to the active aging, Pilates spans every fitness level. Participants in this session will leave with strategies to increase participation and improve bottom lines.

Ropes, chains and sleds, Unconventional Training

Jordan Fitness's education specialists will be outlining how to use unconventional equipment such as ropes, chains and sleds.

Training Ropes are used to improve anaerobic fitness using the upper body, for rehabilitation, shoulder and grip strength endurance and for core drills. Chains are fast becoming popular for progressive resistance training and unconventional core drills, while the sled is a fantastic addition to any club looking to include functional human movement patterns.

Physical Company presents 30 minute masterclass

The freeFORM Board is a new functional training device that has no end of range of motion, and can be used through every plane and in every direction.

It's perfect for all training situations and is quickly becoming the next must have piece of equipment for studios throughout Europe. This 30 minute masterclass with personal trainer Sue Wilkie will guide you from basic exercises through to more advanced moves. Sue will also explain how the freeFORM Board integrates with other equipment such as BOSU and ViPR.

LIW introduces CPD Masterclass and Seminar Theatre

LIW 2011 introduces the CPD Masterclass Arena powered by Skills Active and sponsored by MYZONE and Quick Energy, and the CPD Seminar Theatre also supported by Skills Active.

These exciting new features will give fitness industry visitors the opportunity to collect CPD points through booking onto training sessions and seminars for a taster of the industry's latest training programmes and products. You can book your place on any of these fantastic sessions for just £10 each when you register for free entry to the show at www.liw.co.uk. These sessions will feature a multitude of industry leading organisations including those outlined on this page:

Keiser will present 'M-Series Data' in the Masterclass and 'M-Series Power' in the Seminar Theatre. These workshops will teach fitness trainers how to effectively instruct their students to

use speed, resistance, motivation and intensity to power up their next indoor cycling class.

The M3 bike offers a unique onboard computer that allows the cyclist to stay connected to their progress during a ride. Both sessions will be given by Paco Gonzalez, International Cycling Master Trainer and International Presenter.



The Masterclass Arena will feature a number of leading organisations

Run faster ... Play harder ... Stand stronger with Fitpro

FitPro present 'CXWorks' a short, sharp workout delivered by the Les Mills UK Training Team, that'll inspire participants to the next level of fitness, while strengthening and toning.

CXWorks really hones in on the torso and sling muscles that connect your upper body to your lower body. It's ideal for tightening your tummy and butt, while also improving functional strength and assisting in injury prevention. It'll help you run faster ... play harder ... stand stronger!

CXWorks hits many of the current top fitness trends including, core training, strength training, functional fitness, educated and experienced fitness professionals and group personal training.

In the Seminar Theatre, Magnus Schveving, another international presenter, will present 'Move The World', a brief background to



The CXWorks system is designed to hone in on the torso muscles

LazyTown, the only entertainment brand dedicated to promoting kids' health. Schveving will explain the way in which governments can use LazyTown as 'solutions to motivate children to a healthier lifestyle'.

ARTS & CULTURE

Lloyd Webber grant for new Inverclyde venue

Beacon Arts Centre, a new £9.5m arts venue currently under construction in Inverclyde, has been handed a £100,000 grant from The Andrew Lloyd Webber Foundation.

Funding will go towards a youth theatre providing opportunities for those from socially disadvantaged backgrounds in the Greenock area.

Sited on Greenock's waterfront, the LDN Architects-designed venue will open next summer as part of a wider regeneration strategy. It will feature a 500-seat main auditorium with flytower and trap facilities.



The new theatre will boast a 300-seat auditorium

EUR2m funding boost for Monaghan theatre project

A new home for Monaghan's Garage Theatre will be developed as part of a wider education complex earmarked for the Irish town's old Defence Forces barracks.

Jimmy Deenihan, minister for arts, heritage and the Gaeltacht, has awarded EUR2m (£1.8m) towards the new venue, which will replace Monaghan's existing Garage Theatre opened in 1992.

Oppermann Associates worked with HawkinsBrown on the design of the complex, with the theatre to boast a 300-seat auditorium and rehearsal spaces.

New RNIB guide for museums and galleries

The Royal National Institute of Blind People (RNIB) has produced a new guide to help museums and galleries enhance accessibility to blind and partially-sighted visitors.

Shifting Perspectives contains details on how organisations and attractions can adapt services and implement facilities to meet the demands of visually-impaired people.

The RNIB's new guidance also includes information on how to create an access guide; providing audio-describing exhibits; making information accessible; and providing tactile images and touch tours.

Indoor theatre for London's Globe

Shakespeare's Globe has chosen architects Allies and Morrison to design a new indoor Jacobean Theatre to be developed alongside the landmark London venue.

According to Shakespeare's Globe chief executive Neil Constable, the project is set to fulfil Sam Wanamaker's bid for the venue to stage indoor and outdoor performances.

Allies and Morrison will work with reconstruction architect Jon Greenfield and the Globe's Architecture Research Group to design the scheme, with work due to start in 2012.

It is anticipated that the first winter season at the indoor Jacobean Theatre will take place in early 2013, with the new building hosting 320 people across two tiers of galleried seating.

The indoor theatre was left to be used for education workshops and rehearsals following



The project is designed to fulfil Sam Wanamaker's vision for the Globe

the launch of Shakespeare's Globe in 1997, but is now poised to take on a new lease of life.

Paul Appleton from Allies and Morrison said: "For us, the prospect of recreating, in the heart of Southwark, a theatre for which Shakespeare might have written his last plays, represents an extraordinary privilege."

£1m Liverpool theatre revamp completed

A £1m revamp of Liverpool's former Neptune Theatre – now called The Epstein Theatre in honour of former Beatles manager Brian Epstein – has been completed.

Liverpool City Council contributed £750,000 towards the project, which has seen the Grade

II-listed venue restored to its former glory and ready to host productions once again.

The 98-year-old property was acquired by Liverpool Corporation in 1967 and shut in 2005, with current council leader Joe Anderson making its refurbishment a priority.

FST: Dance 'more popular' than football

More people across Scotland participate in dance activities than play football, according to a report by the Federation of Scottish Theatre (FST).

Dance In Scotland found that nearly a fifth (19 per cent) of the country's adult population – nearly one million people – took part in dance in the past year. It has also been revealed that Scottish dance companies generated more than £3m in income and contributed more than £5m to other parts of the economy.

FST has set out a number of key recommendations, which are designed to improve health, happiness and skills through the use of dance.

Recommendations include giving everyone access to local dance activities; sustaining



The study called for the provision of "high quality" teaching in schools

investment in professional dance to build new audiences; providing children with access to high quality teaching in schools; and expanding opportunities for specialist training.

Ashmolean to open new galleries

Oxford's Ashmolean Museum has said that the new Ancient Egypt and Nubia (present day Sudan) galleries are to open on 26 November, following a £5m development project.

Lord Sainsbury's Linbury Trust, the Selz Foundation and other trusts have funded the work, which aims to build on the success of a new extension opened in 2009.

Rick Mather Architects have led the redesign and display of four existing Egyptian galleries, as well as the extension into the restored Ruskin Gallery formerly occupied by a shop.

Collections are to be presented under the themes of Egypt at its Origins; Dynastic Egypt and Nubia; Life after Death in Ancient Egypt; and The Amarna Revolution.

Egypt in the Age of Empire and Egypt meets Greece and Rome are the other themes that



IMAGE: © RICK MATHER ARCHITECTS

Architectural impression of one of the museum's new Egyptian Galleries

will present the Ashmolean's collection of ancient Egyptian and Nubian artefacts.

Professor Andrew Hamilton, vice-chancellor of the University of Oxford, said: "These remarkable collections are among the most important outside Egypt and one of the Ashmolean's most popular attraction."

Visitor numbers up at English attractions

The total number of people visiting tourist attractions across England increased by 3 per cent during 2010.

The latest boost in visitor numbers was driven predominantly by those made to free attractions, which saw an increase of 6 per cent, while paid attractions saw an overall decline of 1 per cent – reflecting uncertainties experienced by the UK economy.

The majority of the top 20 free attractions were museums or art galleries, with the British Museum retaining top spot with 5.8 million visitors, followed by the Tate Modern, National Gallery and Natural History Museum – all in London.

The Tower of London topped the paid for category with 2.4 million visits, followed by



The British Museum retained its position as one of the most visited sites

St Paul's Cathedral, Westminster Abbey, and Windermere Lake Cruises. Some major operators, however – such as Merlin Entertainments which runs the London Eye and Alton Towers – did not participate in the survey.

New-look Fort Nelson museum unveiled

The Royal Armouries has unveiled its new-look museum at Fort Nelson on Portsdown Hill near Fareham, Hampshire, following the completion of an extensive £3.5m overhaul.

It is hoped the investment in the attraction will attract tens of thousands of visitors each

year and has included the creation of a new glass-sided gallery – Voice of the Guns.

New exhibitions exploring the history of the fort and its people; a new education centre; and a visitor centre housing Café 1871 have also formed part of the redevelopment.



...and if you want to talk to kids, you need to talk to us.



We're experts in Kids media, so if you want to reach this powerful and growing audience, you should come to us. You can run a campaign on our channels for less budget than you might think, and the high return on investment might surprise you too.

Find out how we can help you at:
www.turnermediainnovations.com/leisure

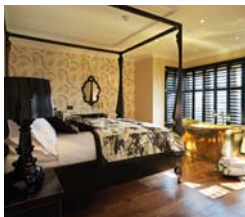
One Leisure opens second Pure Health spa

Huntingdonshire District Council's leisure division, One Leisure, has announced the launch of its second day spa.

The Pure Health & Wellbeing-branded facility at One Leisure Huntingdon leisure centre boasts two treatment rooms, a drench shower and a sauna area with three heat treatment rooms installed by Schletterer – crystal steam, floral steam and herb sauna – as well as a relaxation area.

The treatment menu includes a range of massages, body wraps and facials using Decleor products. The spa is the second Pure Health & Wellbeing-branded site, following the opening of the pilot site in St Neots in November 2010.

According to One Leisure's marketing manager Gemma Bonnett, the success of the St Neots site – which regularly achieves 98 per cent capacity – allowed One Leisure to roll out the Pure Health concept "earlier than first planned".



ICMI has acquired Cardiff's Holm House, Wales

ICMI expands European hotel portfolio

Inverloch Castle Management International (ICMI) has expanded its European portfolio with the acquisition of properties in Cardiff and Tuscany, Italy.

The properties are to add to the Fort William-based hotel management consultancy's existing estate of locations across Scotland and Villa Giuseppina in Italy.

Cardiff's Holm House is a 12-room boutique hotel and features a spa with relaxation room; a gym; and a hydrotherapy pool. The hotel has partnered with Aromatherapy Associates. Meanwhile, Albergo Villa Casanova has been covered from an 18th century renovation.

ICMI managing director Norbert Lieder said: "We look forward to working with Holm House and Albergo Villa Casanova and to helping both venues secure a bright and profitable future."

GLL set to expand Spa-London

Greenwich Leisure (GLL) has revealed that it is planning to expand its Spa-London brand – an affordable public sector spa concept – later this year.

GLL managing director Mark Sesnan told the August 2011 issue of *Health Club Management* that the first new site was expected to open at the Rainbow Centre in Epsom, Surrey.

The Spa-London brand was first launched by GLL four years ago as a "test bed" and the leisure centre operator has refrained from rolling out the concept until now.

Sesnan told *Health Club Management*: "It forms part of our product portfolio, but only in certain locations."

"You're not going to see another 20 Spa-Londons, but you will see some more. The next one is being built as we speak and we're



York Hall Spa in Bethnal Green was one of Spa-London's first locations

debating whether to set up another at our existing leisure centre in Wimbledon."

Meanwhile, Sesnan also confirmed that GLL would be opening its first standalone, wholly owned Gym-London budget club in London "before Christmas" but has so far declined to confirm the facility's exact location.

The Rooms launches at The Albany

A new spa called The Rooms has been launched at The Albany – a wellbeing centre in London's Regent Park.

The facility was formerly known as Lifesmart when it was operated by Carole Caplin (see *Health Club Management*, March 2010, p40) and currently remains under the ownership of Bill Kenwright, who funded the project.

Now called The Albany, much of the original concept has been maintained, but the offering has been broadened out to encompass a more diverse range of services – including treatments from The Rooms.

The Rooms' first flagship site was launched 20 years ago in Hertfordshire by director Heather Dawn. Now supported by a training



The facility was called Lifesmart under the operation of Carole Caplin

school set up 10 years ago, The Rooms works alongside businesses wanting to set up their own treatment offering – including Cannons (Nuffield) in Letchworth Garden City.

Fitness Express secures "significant investment"

A contract management business operated under the Fitness Express and Imagine Spa brands has secured significant investment to enable the business to acquire more sites.

The backing has come from Downing Corporate Finance, which has taken a 30 per

cent stake in the business, which will now operate under a newly formed holding company: Mosaic Spas and Health Club.

The management team of Steve Taylor, Oliver Wright and Dave Courtreen have also slightly increased their shareholding.

Royal Mail submits Nine Elms proposals

Royal Mail has submitted its plans for a mixed-use redevelopment of its South London centre in Nine Elms, which is due to close in 2012 following an operational review.

Outline proposals lodged with Wandsworth Council features leisure facilities, cafés and restaurants, alongside 1,870 new homes, retail units and postal services.

Designed by Allies and Morrison, the scheme is to also include a "significant" part of a proposed Linear Park between Vauxhall Cross and Battersea Power Station.

The 13-acre (5.3-hectare) development lies within the Vauxhall, Nine Elms and Battersea Opportunity Area - a former industrial district now undergoing a major transformation.

A spokesperson for Royal Mail commented: "Royal Mail has a clear strategy to ensure we derive maximum value from any property we no longer require."



The scheme will incorporate new leisure facilities, cafés and restaurants

UoB to revamp Edgbaston campus

A major £175m refurbishment is to be undertaken at the University of Birmingham's (UoB) Edgbaston campus.

A sports centre forms part of the proposals, which will be designed and delivered by Lifschutz Davidson Sandilands and S&P Architects.

The new sports complex is expected to include a 50m swimming pool; sports halls; and training facilities, with the venue to be made available to students, staff and regional amateur sports clubs.

Preview drop-in events for local residents are to be organised during the summer, while a public consultation on the proposed development is scheduled to get underway during the autumn.

UoB director of estates Ian Barker said: "A number of developments, like the proposed new sports centre, swimming pool and the

cultural hub, focus on facilities that will benefit the community as well as staff and students.

"Our plans also envisage a reduction in the University's environmental impact and carbon footprint. We hope that local people will work with us in shaping these plans over the next few months."



A sports centre forms part of the campus' £175m transformation plans

Work to start on Gosport project

Construction work is set to start on the new Gosport Leisure Park in September.

The project, which will replace the existing Holbrook Recreation Centre, will cost around £6m to complete. Facilities include a 25m swimming pool and a learner pool.

A 70-station gym; a sports hall; and a dance studio will also be among indoor facilities, with floodlit artificial pitches also proposed.

DC Leisure, which will run the site on behalf of Gosport Borough Council, will also develop a Travelodge and a pub/restaurant.



The university acquired the Racecourse Ground

University secures Wrexham stadium deal

Glyndwr University has bought Wrexham's Racecourse Ground stadium and Colliers Park - home venue and training facility of Wrexham Football Club respectively.

It is hoped that the deal will safeguard the future of both facilities for the North Wales' town and will see the venues used by university students and local residents.

Professor Michael Scott, the university's vice chancellor, said: "This purchase has been made to secure the future of the stadium and the training ground for Wrexham and north east Wales as a sports venue."

£250k funding boost for Moat Brae development

A bid to transform Moat Brae House and Garden into a Centre for Children's Literature in Dumfries has been handed a boost by the Scottish Government

Fiona Hyslop, cabinet secretary for culture and external affairs, has awarded £250,000 through the Historic Scotland grants scheme towards the property.

Moat Brae is believed to be the property that provided author JM Barrie with the inspiration for Peter Pan and is to benefit from work to stabilise the fabric of the building and other repairs.

Revised proposals for Southwater unveiled

Revised plans for the £250m regeneration of the Southwater area of Telford, Shropshire - including a new multi-screen cinema - has been unveiled by the local authority.

Telford and Wrekin Council has announced that it has refreshed its master-plan for the scheme in light of a new action plan for Central Telford and changes to the council's accommodation strategy.

New details regarding the requirements of developers and the public has also led to the new proposals, which feature a cinema venue with bars and restaurants.

Hospitality & Leisure

Specialist Property Services

**Valuations, Sales, Aquisitions,
Rent Reviews, Expert Witness.**

Contact: Colin White
colin.white@edwardsymmons.com

London • Bristol • Leeds • Liverpool • Manchester • Plymouth • Southampton

**Edward
Symmons**

020 7344 4500

www.edwardsymmons.com

**UK and international
property experts**
covering all sectors of the
leisure and hotel industry

Alan Plumb
+44 (0) 1865 269000
aplumb@savills.com
savills.co.uk/leisure

savills
savills.com

Rating • Planning & Site Licensing

**CHARLES
F.J. JONES & Son
LLP**
CHARTERED SURVEYORS

**Leading Professional Advisors
to the Leisure Industry
for over 70 years**

Charles F Jones & Son LLP

01244 328141 www.cfj.co.uk

16 Grosvenor Court Foregate Street Chester CH1 1HN

Valuations • Sales & Acquisitions

TO ADVERTISE IN THE PROPERTY DIRECTORY

please contact
Simon Hinksman on
(01462) 471905

or email
property@leisuremedia.com

LEISURE PROPERTY FORUM CORPORATE MEMBERS' DIRECTORY

3D Reid
Tel: 0121 212 2221
www.3dreid.com
Contisbee
Tel: 020 7700 6666
www.contisbee.co.uk
Ashurst LLP
Tel: 020 7638 1111
www.ashurst.com
Bardays Commercial Bank
Tel: 07766 361 232
BGI Design
Tel: 020 7021 0217
www.bgi-design.com
Berwin Leighton Paines
Tel: 020 7760 1000
www.blplaw.com
Break Street des Roches LLP
Tel: 01235 836614
www.bsdcr.com
CB Richard Ellis Ltd
Tel: 020 7182 2197
www.cbre.com
Cgms Consulting
Tel: 020 7583 6767
www.cgms.co.uk
Chase & Partners LLP
Tel: 020 7389 9494
www.chaseandpartners.co.uk
Christie & Co
Tel: 0113 389 2700
www.christiecorporate.com

Citygrove Securities Plc
Tel: 020 7647 1700
www.cms-cmk.com
CMS Cameron McKenna LLP
Tel: 020 7367 2195
www.cms-cmk.com
Colliers International UK plc
Tel: 020 7487 1710
www.colliers.com/uk
Collyer Bristow LLP Solicitors
Tel: 020 7470 4408
www.collyerbirstow.com
Cushman & Wakefield LLP
Tel: 020 7152 5209
www.cushmanwake.com
Davenport Lyons
Tel: 020 7468 2600
www.davenportlyons.com
Davis Coffey Lyons
Tel: 020 7299 0700
www.coffeygroup.co.uk
DLA Piper UK LLP
Tel: 020 7796 6155
www.dlapiper.com
Drivers Jonas Deloitte
Tel: 0207 3033702
www.djdelloitte.co.uk
E3 Consulting Limited
Tel: 0845 230 6450
www.e3consulting.co.uk
Edward Symmons LLP
Tel: 020 7344 4500
www.edwardsymmons.com

Finers Stephens Innocent LLP
Tel: 020 7344 5312
www.fislaw.com
Flagdate LLP
Tel: 020 3036 7000
www.flagdate.com
Fleurets Limited
Tel: 020 7280 4700
www.fleurets.com
Gala Leisure Limited
Tel: 0208 507 5445
www.galacoral.com
Genting Casinos
Tel: 0118 939 1811
www.gentingcasinos.co.uk
Gerald Eve LLP
Tel: 020 7333 6374
www.geraldve.com
Grant Thornton UK LLP
Tel: 01753 781167
www.uk.gt.com
Hadfield Cawkwell
Davidson Limited
Tel: 0114 266 8181
www.hcd.co.uk
Hermes Real Estate
Investment Management Ltd
Tel: 020 7680 3796
www.hermes.co.uk
Humberts Leisure
Tel: 020 7629 6700
www.humberts-leisure.com



Indigo Planning
Tel: 020 8605 9400
www.indigoplanning.com
James A Baker
Tel: 01225 789343
Jones Lang Lasalle
Tel: 020 7399 5326
www.joneslanglasalle.co.uk
Kerry London Ltd
Tel: 020 7623 4957
www.kerrylondon.co.uk
Kimbell LLP
Tel: 01908 350 205
www.kimbells.com/hospitality
King Sturge Services Ltd
Tel: 0207 493 4933
www.kingsturge.com
Lawrence Graham LLP
Tel: 020 7379 0000
www.lg-legal.com
Legal & General Investment
Management Holdings Ltd
Tel: 020 3124 2763
www.lgim.co.uk
Leisure Opportunities
Tel: 01462 471 905
www.leisureopportunities.co.uk
Junson Mitchellan
Leisure Property Forum Ltd
www.junson-mitchellan.co.uk
Matthews & Goodman
Tel: 020 7747 3157
www.matthews-goodman.co.uk

For membership information
please contact Michael Emmerson
info@leisurepropertyforum.org
www.leisurepropertyforum.org

Mayer Brown Rowe
& Maw LLP
Tel: 020 7782 8890
www.mayerbrownrowe.com
Merlin Entertainments
www.merlinentertainments.biz
MWB Management
Services Ltd
Tel: 020 7706 2121
www.mwb.co.uk
Odeon & UCI Cinemas Ltd
Tel: 0161 455 4000
www.odeonuk.com
Olswang
Tel: 020 7067 3000
www.olswang.com
Pindars
Tel: 01908 350500
www.pindars.co.uk
Pitmans LLP
Tel: 0207 6344653
Rank Group - Gaming Division
Tel: 01628 504 194
Reed Smith LLP
Tel: 020 3116 3000
www.reedsmith.com
Roberts Limbrick Ltd
Tel: 03333 405500
www.robertslimbrick.com
RTKL-UK Ltd
Tel: 020 7306 0404
www.rtkl.com

Saturn Projects Ltd
Tel: 01454 202076
www.saturnprojects.com
SRP Risk and Finance
Tel: 0208 672 7707
Strutt & Parker LLP
Tel: 01722 344057
The Leisure Database Co
Tel: 020 7379 3197
www.theleisuredatabase.com
Thomas Eggar LLP
Tel: 01293 742747
www.thomaseggar.com
Tragus Group
Tel: 020 7121 6432
www.tragusgroup.com
Townes & Hannes LLP
Tel: 020 7423 8084
Wagmanana
Tel: 0207 009 3620
Willmott Dixon
Construction Ltd
Tel: 01932 584700
www.willmottidixon.co.uk
X-Leisure
Tel: 020 7592 1500
www.x-leisure.co.uk

Plus there are more than 70 other companies represented by individuals.

PROC10-0134



Leisure Management Contract

Braintree District Council intends to invite tenders for the management, marketing, maintenance and operation of its four Leisure Centres, including the proposed new Witham Leisure Centre. The Leisure Centres are currently being managed by a private operator.

The date for the commencement of the contract is 1st September 2012. The contract will be for a minimum of ten years with the potential option to extend it for a further five.

The information and documents for this opportunity are available on <https://www.delta-esourcing.com/delta>. You must register on this site to respond, if you are already registered you will not need to register again, simply use your existing username and password. Please note there is a password reminder link on the homepage.

Suppliers must log in, go to your Response Manager and add the following Access Code: 3442K97654. Please ensure you follow any instruction provided to you here.

The deadline for submitting your response is 12:00pm on 21st September 2011.

Please ensure that you allow yourself plenty of time when responding to this invitation prior to the closing date and time, especially if you are uploading supporting documents. If you experience any technical difficulties please contact the Delta eSourcing Helpdesk on 0845 270 7050 or email helpdesk@delta-esourcing.com. Expressions of interest not registered via the delta portal will not be accepted.

Please note that the Council believes the Leisure Management Services to which this procurement exercise relates fall within Part B of Schedule 3 to the Public Contracts Regulations 2006 ("the regulations") and Annex IIB to council decision 2004/18/EC.

Making a Difference



EXPRESSIONS OF INTEREST FOR NEW CAFE OPERATION WITHIN MONTROSE SPORTS CENTRE, MONTROSE

On the instructions of Angus Council



Montrose Sports Centre, Marine Avenue, Montrose, DD10 8TR



- UNIQUE OPPORTUNITY TO ACQUIRE CAFE SPACE WITHIN NEW SPORTS CENTRE
- FOCUS ON PROMOTION OF HEALTHY EATING
- OPENING HOURS 9AM - 10PM
- OFFERS TO LEASE INVITED
- TARGET COMPLETION DATE OF OCTOBER 2012
- FLOOR AREAS:
KITCHEN AND SERVERY AREA 69 SQ.M (743 SQ.FT)
CAFE SPACE 117 SQ.M (1,259 SQ.FT)

LOCATION

Montrose is one of the principal market towns within the burgh of Angus and has a resident population of approximately 12,000 persons (source Angus Council).

flow of customers throughout the day and evening.

The new swimming pool will link to the existing Montrose Sports Centre.

The £10 million pool project has a target completion date of October 2012.

DESCRIPTION

Opened in 1983, Montrose Sports Centre can offer more than 30 different sporting activities. Facilities include a six badminton court games hall, three glass backed squash courts, multi-purpose gym and activity rooms along with a 9-hole pitch and putt course nearby.

The centre also provides facilities for meetings, functions and children's birthday parties. The centre runs approximately 50 adult fitness sessions on a weekly basis meaning a steady

PROPOSAL

Our clients are seeking letting proposals for a new cafe outlet to coincide with the development of a new swimming pool to complement the centres facilities. Further details are available on request.

LEGAL COSTS

Each party shall be responsible for their own legal costs with the incoming tenant responsible for any Stamp Duty (SDLT) and Registration due etc.

FURTHER INFORMATION:

- Gavin Russell BSc (Hons) g.russell@shepherd.co.uk
 - Gerry McCluskey Dip Prop Inv MRICS g.mccluskey@shepherd.co.uk
 - J & E Shepherd, Chartered Surveyors, 13 Albert Square, Dundee, DD1 1XA
- Telephone: 01382 878005 Fax: 01382 878009 www.shepherd.co.uk



TO LET

Finsbury Park Track & Gym Endymion Road, N4

Offers Invited - Informal Tenders

The package includes:

- A sports facility featuring a 6 lane track with field event facilities (not certificated).
- In field suitable for American Football and other ball games.
- A pavilion including male and female changing rooms, meeting room, a 30 station (approximate) gym and separate rooms which can be used for storage or additional changing rooms.

Finsbury Park has been a Green Flag Award winner since 2007.

Finsbury Park Track and Gym (FPT&G) is situated in the middle of the park and caters for a number of sports clubs, school sports days and play and play gym customers.

The park itself is the largest park managed by Haringey Council and attracts approximately 1.5m visitors year round. The Park has excellent rail, tube and bus links and is located in a densely populated area.

Term: Negotiable

Premises: Finsbury Park Track & Gym

Business Rates: Currently none payable but applicants should make their own enquiries as to the situation once the business is established

Offers TO LET are invited by way of an informal tender process. The successful application will be selected based on best proposal received in terms of quality and price.

Interested parties are requested to complete application forms to be submitted by 11th November 2011. Requests for application forms and further information should be made via email to: andrea.keeble@haringey.gov.uk

Please follow the instructions sent out to you with the application documents for return of your application and proposal.

Haringey Council is committed to equal opportunities



CHANGING TIMES?

S&P works with you to deliver inspirational environments by solving your procurement demands and establishing new models of service consolidation and partnership working



The Edge, University of Leeds



Cardiff International Pool



K2, Crawley



The Peak, Stirling Sports Village

DELIVERING INTELLIGENT SOLUTIONS FOR 30 YEARS



Architecture • Masterplanning • Consulting • Regeneration • Feasibility
Refurbishment • Consultation • Engagement • Procurement Advice
Project Management • Planning Sustainability • Value Management

LONDON

Victory House
30 Kingsway
London WC2B 6EX
+44 (0)20 7831 8877
+44 (0)20 7831 4477 FAX

NOTTINGHAM

9 Weekday Cross
The Lace Market
Nottingham NG1 2GB
+44 (0)115 941 5369
+44 (0)115 947 5955 FAX

GLASGOW

Mackintosh House
5 Blythswood Square
Glasgow G2 4AD
+44 (0)141 225 8399
+44 (0)141 225 6271 FAX

London 'unaffected' by disorder

Civil unrest in London and other cities did not lead to "any significant drop" in inbound markets in the immediate aftermath, according to the European Tour Operators Association (ETOA).

ETOA said that its members had more than 38,000 people staying in the capital on 10 August, with just 330 cancellations for the following week reported on 11 August.

The cancellation rate – at just 0.2 per cent – represented 660 missing bed-nights and was below the threshold of background cancellation.

An ETOA spokesperson said: "Some of the individual cancellations are now rebooking. London remains safe for tourists. And tourists understand that London remains safe."

A spokesperson for the mayor of London said: "It is important to note that recent



ETOA said there was no "significant drop" in the aftermath of the riots

incidents have occurred away from the capital's major visitor attractions, which continue to operate as normal and attract thousands of people from across the world."

UKinbound chief executive Mary Rance added: "It's important we stress that these developments are not typical."

New UK event for overseas tourism buyers

UKinbound, VisitBritain and the European Tour Operators Association (ETOA) are to hold a new business-to-business event to bring together overseas tourism buyers.

Due to take place on 19-20 March at Wembley Stadium, the VisitBritain Hosted

Buyers Marketplace will see 150 specially-selected buyers attend from 20 countries.

Wembley Stadium will also host ETOA and UKinbound's Britain and Ireland Marketplace on 19 March, with the two events designed to increase opportunities for reaching buyers.

Poll reveals summer 2011 holiday plans

New research carried out by YouGov has found that more than a quarter of Britons (27 per cent) are planning to take their main summer holiday in the UK this year.

According to the poll, the same amount will travel to Europe and nearly a third (32 per cent) of people admitted that they will not be having a main summer holiday at all.

From those planning to holiday in the UK, YouGov said nearly 73 per cent will use their leisure time by going for walks and 65 per cent will visit landmark attractions.

Londoners were the least likely to remain in the UK for their main summer holiday, with 16 per cent to travel abroad. A third of Midlands and Wales residents will opt for a staycation.



The poll found that 27 per cent of Britons are planning a UK staycation

Meanwhile, in addition to the 32 per cent planning a main holiday in Europe, 4 per cent have said they will be holidaying in the US and 2 per cent will travel to Asia or Africa.



leisure media
STUDIO

Industry-leading marketing and design services

With more than 30 years' experience, **leisure media studio** will work with you to create bespoke print and web solutions to power your marketing

- Web design
- Email marketing
- Contract publishing
- Graphic design
- Digital turning pages
- Image retouching
- Illustration
- Advertising design
- Direct mail
- Print

LET US QUOTE YOU

Contact Tim Nash
Tel +44 (0)1462 471917
timnash@leisuremedia.com

Getting 'hands-on' to try out a new skill



SAM COULSTOCK
is customer
relationship
director for The
Springboard Charity

Springboard is set to provide a 'hands on' opportunity for young people to try out a new skill between 5-8 October, when the UK hosts to WorldSkills London 2011.

Springboard – together with its sponsors and college partners – will provide visitors with a 'bite-size' taster of hospitality. The activity will be one of 46 Have a Go activities designed to introduce visitors to skills they might never have previously considered as potential career options.

With 150,000 global visitors expected, including some of the world's most highly respected skills experts, Springboard will demonstrate to the UK, and, the rest of the world that the hospitality industry excels in skills training. By taking part in the Competition, Springboard will be contributing to the WorldSkills London 2011 Have a Go campaign target to deliver one million Have a Go activities around the UK.

WorldSkills London 2011 is one of the largest events to be held at ExCeL London, and will see more than 1,000 of the most skilled young people from across the globe battling it out in 46 different skills. 'Have a Go' colleges and training providers will help inspire young people to think about their future careers and develop their skills.

Theo Paphitis from BBC's *Dragons' Den* said: "There's no substitute for hands-on experience and I have every faith that our students will rise to the occasion and help to put on a truly spectacular activity."

Springboard CEO Anne Pierce added: "The last time a WorldSkills competition was held in the UK was over two decades ago – this really is a once in a generation opportunity for our students.

"To be part of an event which recognises skills at the very highest level is truly aspirational and I have every faith that our students will rise to the occasion and help to put on a truly spectacular activity."

Visitors interested in attending the event can register for complimentary tickets at www.worldskillslondon2011.com/visit

TRAINING

ActiveGraduates online service launched

The National Skills Academy for Sport and Active Leisure (NSA) has launched its new ActiveGraduates to help graduates of the Future Jobs Fund (FJF) gain employment.

The service will allow all young people who completed the FJF initiative and are still without full-time jobs to list themselves on the database, which employers will be able to search free of charge.

Florence Orban, NSA chief executive, said each ActiveGraduate had undergone quality assured training and six months of hands-on work experience – making them attractive to employers.

"The young people on this website are competent, qualified and ready to take the next step in their career," she said. "They are passionate



The online service is designed to help FJF graduates find employment

about working in the leisure sector so are perfect for employers looking to find people who will be able to hit the ground running as well as spend their career in the sector."

Orban estimates that there are around 500 ActiveGraduates looking for employment.

DLL attains FIA code compliance

David Lloyd Leisure (DLL) – one of the UK's leading health club operators – is now compliant with the Fitness Industry Association's (FIA) Code of Practice.

The FIA's quality assurance scheme involves performance standards relating to health and safety; staff training; and customer care.

Facilities that are compliant with the Code of Practice are required to show that staff are trained to standards recognised by the Register of Exercise Professionals (REPs).

Compliant facilities also have to ensure members receive adequate inductions; and provide fair contracts in accordance with the Office of Fair Trading guidance.

DLL sales and operations director Steven Matthews said: "This compliments our externally audited programme and confirms that



The code of conduct involves standards in areas such as customer service

both its teams and members are provided with a safe environment in which to work, exercise and engage in leisure activities.

"What's more, it provides current and potential members with the peace of mind that we operate to the highest standards of both facilities and expertise."

Premier Training and Fit Biz to offer new business course

Premier Training International (PTI) and Fit Biz Builders are looking to equip fitness professionals with the tools needed to boost sales and encourage business expansion.

The partnership has launched a new 12-week business, sales and marketing course which

will be delivered over an e-learning platform in easily manageable one-hour weekly sessions.

Victoria Branch, spokesperson for PTI, said: "This programme will provide innovative sales and marketing tools, which will help launch a new business and drive existing business."



Why not become an Instructor of HSE First Aid at Work Courses?

The Five-Day First Aid Instructor Course also includes the renowned PTLLS Level 3 Training Qualification

"...I found the Instructor Course to be excellent and a credit to your company..."
Debbie Hull (Bishops Cleeve)

Nuco Training Ltd
08456 444 999
enquiries@nucotraining.com
www.nucotraining.com
www.nucoplus.com

For all your first aid needs

Academy
OF EXERCISE STUDIES

Developing and Educating True Industry Professionals

- ✓ Diploma in Exercise Studies
- ✓ CPD Workshops
- ✓ Level 3 Personal Trainer
- ✓ Level 2 Gym Instructor

0845 835 0277


info@exercisestudies.co.uk
www.exercisestudies.co.uk

Leisure Opportunities

training
DIRECTORY

From just £534 you can access over 23,000 motivated leisure professionals for 3 months (6 consecutive insertions). Committed to the leisure industry, they are potential students for your courses

TO ADVERTISE
+44 (0)1462 471747
leisureapps@leisuremedia.com



Flexible Ways to Study at New College Durham

New College Durham is a mixed economy college delivering a broad spectrum of Further and Higher Education Courses. We currently run courses from Level 1 through to Level 5 but can run also run bespoke programmes which can be delivered on site or at your organisation.

Study Part Time on one of the following Courses:

- Active IQ L2 Certificate in Fitness Instructing (Gym/ETM) - 1 evening per week over 17 weeks
- Active IQ Certificate in Adapting Fitness Instruction for Gym Adolescents
- HNC in Sport (Health & Fitness) - 2 Evening per week over 2 years
- HNC in Hospitality Management - 2 Evening per week over 2 years
- Foundation Degree in Sport & Exercise Studies
- First Aid

Study Full Time on one of the following Courses:

- Foundation Degree in Sports Studies (2 Years)

Currently Working in the Industry?
You may also be eligible to access free training via our L2 & L3 Apprenticeships in Sport & Active Leisure (Fitness Instructing and Operational Services)

For further information or to reserve your place on one of the above courses please contact Steven Bell Curriculum Leader for Sport on (0191) 3754924.

www.newdur.ac.uk

Apprenticeships

Focus Training
Adding value to your staff

As an employer of fitness professionals, you'll recognise the value of investment in training them to ensure they deliver the best possible service to your membership.

Fantastic professional courses available in:

- Personal Training
- Exercise to Music
- Gym Instructor
- Step
- Studio Cycling
- Nutrition & Weight Management
- GP Exercise Referral
- And much more.

Call Focus Now:
0333 9000 222
or 01204 388330

www.focus-training.com

Are you in the running for a career in Leisure Management?

Loughborough College offers courses in Leisure, Sport, Event and Recreation Management to help you start your career, or develop your skills and managerial expertise from an existing position in the leisure industry.

Study full time, day release, block release or by distance learning, at a variety of levels; from the ISRM Fitness Management Certificate and Higher National Diploma to full Honours Degree. The Foundation Degree and Higher Professional Diploma are fully accredited by the ISRM, and lead to use of the designatory letters M.Inst.SRM.

Recruiting now for a September 2011 start.

For more information
0845 166 2950
www.loucoll.ac.uk

Loughborough
COLLEGE est. 1909

TOWER HAMLETS YOUTH SPORT FOUNDATION



Tower Hamlets is a vibrant and diverse inner city borough with the youngest average population in the UK. Our high deprivation and urban setting brings many challenges but also attracts some of the brightest and most committed young staff. The borough has an excellent reputation for tackling challenging circumstances with innovation and improvisation and our young people's energy, enterprise and talent makes Tower Hamlets an extremely rewarding place to work.

The Tower Hamlets Youth Sport Foundation is picking up from the borough's School Sport Partnership which was widely recognised for outstanding practice. The Partnership's achievements were

significant, varied and included overseeing large increases in curricular time for PE, participation outside of school, participation in competition and involvement in sports leadership.

The Partnership also grew a large delivery arm to address local needs which included a much wider role in club and community youth sport. This area of growth is set to increase as the local authority works with the Foundation to transfer some of its traditional responsibilities for youth sport and the Foundation generally becomes established.

CRICKET DEVELOPMENT OFFICER

Ref: THYSF-CRIC

Salary: Scale 4 (£20,460-£22,422)

Contract Type: 1 Year Rolling Contract

Location: Tower Hamlets, London

Hours: Full Time

Closing Date: Wednesday 14/09/11 (4pm)

Interview Date: Week commencing 19/09/11

We currently have a team of 10 Sports-specific Development Officers with the brief of developing all aspects of their sport within Tower Hamlets. They are an integral part of the Youth Sport Foundation's offer to schools and young people.

A Cricket Development Officer has been a part of that team for the past 4 years and during that time the sport has become a core part of the sporting offer to young people at our schools.

We now require a motivated and methodical cricket enthusiast to maintain our structure which is recognised locally and nationally as outstanding, but also to find new and innovative ways to engage a wide range of young people in cricket at all levels.

An ideal candidate will have good management and developmental skills but will also have excellent communication and networking skills, working with local stakeholders, the Middlesex Cricket Board and other key personnel in the region. Other non-cricket specific organisations will also be key partners.

The post will also involve a large amount of coaching in a variety of settings and so an excellent practitioner able to cope with a range of abilities, experience, ages and enthusiasm is also required.

We are interested in hearing from level 2 (or above) qualified coaches who are interested in finding and supporting the most talented young cricketers in Tower Hamlets and providing them with the sort of support children from more privileged backgrounds experience. Conversely, shortlisted candidates will also need to demonstrate their commitment to improving the lives of ALL young people through cricket. We believe in sports' power to positively affect lives and we are strongly committed to inclusion at every level.

The Foundation also aims to support employees in achieving their own personal goals and although initiative and self-motivation are very important, we are committed to professional development and we offer a very supportive environment to work in.

CLUB & COMMUNITY MANAGER

Ref: THYSF-CLUB

Salary: Scale P03 (£35,055-£36,960)

Contract Type: 1 Year Rolling Contract

Location: Tower Hamlets, London

Hours: Full Time

Closing Date: Wednesday 14/09/11 (4pm)

Interview Date: Week commencing 19/09/11

The newly established Tower Hamlets Youth Sport Foundation will be operationally managed by a leadership team of 6 initially.

Although the leadership team will hold some collective, generic responsibilities with regards to the running of the Foundation, each will hold a specific responsibility for a key area of work. We require an individual with management and sports development experience to establish the Foundation's role in community participation, club links and club development.

In its complete form this is a new area of responsibility for us and so this post will require a robust, driven and motivated self-starter who is not easily defeated.

There are many challenges that affect our young peoples' engagement in sport outside of school and so experience of working in an inner city area, an area of high deprivation or an area of high ethnic diversity is also desirable, although not essential.

An innovative individual that has already developed some ideas and an approach to improving participation in sport will also be at an advantage even though there will be a necessity for the post holder to immerse themselves in the often unique environment Tower Hamlets offers and adopt some core values the Foundation has already established.

An ideal candidate will be an excellent communicator and have great inter-personal skills as there is a necessity to develop close relationships with a complete range of partners from volunteer officers at small clubs through to senior figures at schools, NGOs and corporate partners. Effective and consistent practical and performance management is also essential as this role will involve the shared line management of our extensive team of sport specific development officers and coaches. Experience of strategic planning, contributing to policy making and holding consultations will also be valuable as this is still a relatively new area of work for us.

The Foundation also aims to support employees in achieving their own personal goals and although initiative and self-motivation are very important, we are committed to professional development and we offer a very supportive environment to work in.

COMPETITION MANAGER (INCL. SGO RESPONSIBILITY)

Ref: THYSF-SGO

Salary: Scale 4 (£20,460-£22,422)

Contract Type: 1 Year Rolling Contract

Location: Tower Hamlets, London

Hours: Full Time

Closing Date: Wednesday 14/09/11 (4pm)

Interview Date: Week commencing 19/09/11

The Tower Hamlets Youth Sport Foundation will be responsible for the delivery of levels 1 and 2 of the coalition Government's School Games initiative in Tower Hamlets.

We require a dynamic and energetic individual to become an integral part of our network and manage all youth sport competition in Tower Hamlets. This includes responsibility for the School Games initiative, other school events and some community events.

Many existing events are currently run by a variety of partners including many volunteers and the Foundation is strongly committed to supporting this. Therefore inter-personal skills and experience of building meaningful relationships is an essential requirement for this post.

Established organisational and administrative skills are also essential and experience of working to deadlines is advantageous.

Strong candidates will demonstrate a motivation for providing positive experiences to underprivileged children, will have a passion for securing life-long participants in sport and will share our belief that a wider variety of sports engage a wider range of young people.

The Foundation's Interim Manager also currently sits on a Development Group that is designing the first pan-London level 3 School Games event for 2012 and as such, the successful candidate will be in an ideal position to influence the landscape of competitive sport in London over the coming years.

The Foundation also aims to support employees in achieving their own personal goals and although initiative and self-motivation are very important, we are committed to professional development and we offer a very supportive environment to work in.

Providing outstanding opportunities and support for young people in Tower Hamlets to reach their potential, realise their ambitions and develop personally through sport.

For an informal discussion about this opportunity, please call Chris Willetts, Interim Youth Sport Foundation Manager – 0207 987 4811

HOW TO APPLY: To obtain an application pack please contact Langdon Park School

By telephone on: 0207 987 4811 (leaving a message with reception)

By email: tomcooperssp@gmail.com (Tom Cooper – Schools (Extra-Curricular) Manager)

By mail: Tower Hamlets Youth Sport Foundation, c/o Langdon Park School, Byron Street, London, E140RZ



Cousins Entertainment Ltd is one of the leading suppliers of temporary ice rinks and has grown from strength to strength since Olympic Gold medalist and MBE Robin Cousins founded the company in 2000.

Within this unique company are decades of invaluable production experience, award winning talent and proven commercial success in all aspects of the entertainment ice industry. The wealth of experience and knowledge brings the highest value and quality to a variety of productions, installations and management services

They are now looking for the following professional and enthusiastic staff to become part of their valued team for the forthcoming season starting early November 2011:

Ice Rink Managers, Assistant Managers and General Staff

The contracts will be short term for seasonal ice rinks in and around London.

For further information please email your CV to: alan@cousinsentertainment.com



University of Essex

Sports Supervisor

(Ref. SG422) The University of Essex Sports Centre is seeking to appoint a Sports Supervisor to join our team. The person appointed will be responsible for the supervision of sports facilities, sports coaching, organisation of events, maintenance and setting up of sports equipment and some reception work. Candidates must have an all-round interest in Sport and be suitably qualified in Sport, Recreation, Physical Education, or Fitness and Health. Due to the nature of the work, appointment will be subject to a Criminal Records Disclosure check.

Salary: £17,179-£19,822 per annum, plus shift allowance

Closing date: 18 September 2011

Apply online. If you have a disability and would like information in a different format telephone (01206) 873521/874588.



<http://jobs.essex.ac.uk>

ACTIVE PARTNERSHIP MANAGER

Salary: £24,646 per annum
Hours: 37hrs per week



Celtic Community Leisure is an exciting and innovative 'not-for-profit' Trust, established to manage nine local authority facilities in Neath Port Talbot. As the Active Partnership Manager you will lead in the promotion of Sport and Physical Activities within Celtic Community Leisure (CCL).

You will be responsible for building relationships with key stakeholders, outside agencies and voluntary organisations to establish increased participation within all CCL facilities.

Working in partnership with operational staff and NPTCBC Officers you will ensure commercial viability and achievement of key Health and Wellbeing Agendas.

Closing Date: 5th September 2011 Interview Date: 20th September 2011

Application Forms and Further Particulars can be obtained from:
Human Resources Section
Tel No: 01639 640068 Fax No: 01639 620230
Email: Samantha.gentry@celticleisure.org



www.leisureopportunities.co.uk
leisureopportunities
news & jobs updated daily online

YOUR 1ST CHOICE FOR RECRUITMENT & TRAINING

NEXT ISSUE:

6 SEPTEMBER 2011

BOOK BY NOON ON
WEDS 31 AUG 2011

TO ADVERTISE, Contact the
Leisure Opportunities team on
t: +44 (0)1462 431385
e: leisureopps@leisuremedia.com



Key Account Manager



Reports to: The General Manager **Based at:** GRAVITY UK, High Wycombe

Job role:

To sell the Total Gym fitness equipment range to UK Key Accounts and individual customers, in accordance with agreed targets.

The applicant should have a strong sales background and whilst not mandatory, a background in, or knowledge of the fitness industry is preferable. Full product training will be provided.

Key responsibilities and accountabilities include:

- gaining a clear understanding of customers' businesses and requirements
- composing and presenting customer focused presentations
- challenging any objections with a view to closing the sale
- negotiating on price and costs, delivery and specifications with buyers

Candidate:

- must be confident in the sale process with a strong desire to sell
- must be confident at forming relationships with clients
- must be highly self-motivated and enthusiastic

Income

Starting salary is £25K per annum with an estimated OTE of £50K. Car, laptop, mobile phone and reasonable expenses provided.

Please post your CV with full details to The General Manager, GRAVITY UK, 2a Desborough Industrial Park, Desborough Park Road, High Wycombe, HP12 3BG. Or email jobs@gravityuk.net.

Applications close September 16th 2011.

Interviews will be held the week commencing September 26th 2011.

For more details on the following jobs
visit www.leisureopportunities.co.uk
or to advertise call +44 (0)1462 431385



Beauty Therapist, *Center Parcs, Whinell Forest, near Penrith, UK*
Spa Therapist, *Aromatherapy Associates, Knightsbridge, UK*
Training Manager, *Car Aromatherapy Associates, UK*
Spa Operations Manager, *Armatwaite Hall Hotel & Spa, Cumbria, UK*
Cricket Development Officer, *Tower Hamlets School Sports Partnership, London, UK*
Club and Community Manager, *Tower Hamlets School Sports Partnership, London, UK*
Competition Manager, *Tower Hamlets School Sports Partnership, London, UK*
Senior Sales Consultant, *Finesse Leisure Partnership, Hertfordshire, UK*
Leisure Assistant, *Nexus Community, Amersham, Buckinghamshire, UK*
Fitness Professionals, *Active Faces, Nationwide, UK*
Shared Active Women Co-ordinator (Part time), *South Oxfordshire, UK*
Health and Recreation Manager, *Sharjah Golf and Shooting Club, UAE*
Recreation Assistant, *Greenwich Leisure Ltd, Various - London wide, UK*
Duty Manager, *Greenwich Leisure Ltd, Harrow Leisure Centre, UK*
Recreation Assistant, *Greenwich Leisure Ltd, Porchester Centre / Queensway / Bayswater, London, UK*
Recreation Assistant, *Greenwich Leisure Ltd, Redhill, Surrey, UK*
Freelance Female Personal Trainer, *Energie Group, Beckenham, UK*
Gym Instructor, *Energie Group, Beckenham, UK*
Membership Sales Advisor, *Energie Group, Inverness, UK*
Personal Trainer, *Energie Group, Rotherham, UK*
Sales executive (part time), *Energie Group, Finchley, UK*
Fitness Consultant, *Energie Group, Southampton, UK*
Assistant Manager / Membership Sales, *Hilton Abu Dhabi, Abu Dhabi, UAE*
Senior Business Development Manager, *Inspirit, Maidenhead, UK*
Leisure Assistant x 6, *Nexus Community, Thame, Oxfordshire, UK*
Sport Assistant, *Northumbria University, Newcastle upon Tyne, UK*
Senior Sales Consultant - South, *Precor, South, UK*
Business Development Manager, *Peach Recruitment, Halesowen, UK*
Membership Sales Consultant, *Weybridge Health Club, Surrey, UK*
Fitness Advisors (FT / PT), *Weybridge Health Club, Surrey, UK*
Personal Trainers, *Pure Gym Limited, Stoke, UK*
Sports Centre Manager, *Montsaye Academy, Kettering, UK*
Personal Trainers, *Pure Gym Limited, Various locations, UK*
Lecturer in Sport and Fitness, *South Thames College, London, UK*
Course Sales Advisor, *YMCA Fitness Industry Training, Central London, UK*
Sales Executive - Hotel Leisure and Fitness Club, *Renard Resources, Northamptonshire, UK*
Senior Beauty Therapist, *Renard Resources, Bristol, UK*
Spa Manager, *Renard Resources, London, UK*
Personal Trainers, *Pure Gym Limited, Warrington, UK*
Want a career as a tutor but not yet qualified? *Personal Training Qualifications Ltd, Nationwide, UK*
Activities Coordinator, *Cheltenham Borough Council, Cheltenham, UK*
Group Marketing Communications Manager, *BH Live, Bournemouth, UK*

Fitness Instructors, *Energie Group, Cannock, UK*
Membership Sales Advisor, *Energie Group, Cannock, UK*
Experienced exercise professionals, *Ten Pilates, Central London, UK*
Maintenance Director, *Ferrari World Abu Dhabi, Abu Dhabi, UAE*
Sports Coaches, *Nexus Community, Chilterns / South Bucks / Oxfordshire, UK*
Operations Supervisor, *Nexus Community, Windrush, West Oxfordshire, UK*
Project Active8 Sport Coordinator, *University of Brighton, Brighton, UK*
Duty Manager / Membership Sales Advisor, *Energie Group, Fulham, UK*
Senior Recreation Assistant, *Greenwich Leisure Ltd, Tower Hamlets/Hackney/Barnet, UK*
Duty Manager, *Greenwich Leisure Ltd, SE London, UK*
Fitness Professional, *Energie Group, Newport Pagnell, UK*
Sports Supervisor, *University of Essex, Colchester, UK*
Operation Managers, *Derby City Council, Derby, UK*
Receptionist, *Energie Group, Southampton, UK*
Membership Manager, *Energie Group, Epsom, UK*
Membership Sales/ Prospector, *Energie Group, Chesham, UK*
Sales Consultant, *Energie Group, Southampton, UK*
Senior Business Development Manager, *Inspirit, Maidenhead, UK*
Sales Manager, *Sheffield International Venues, Sheffield, UK*
Sales Executive - Hotel Leisure and Fitness Club, *Renard Resources, Northamptonshire, UK*
Regional Development Manager Europe, *International Cricket Council, London, UK*
Sports Massage Therapist, *Ten Pilates, London, UK*
School Sport Managers (4 posts), *Northamptonshire Sport, UK*
Duty Manager, *Ealing Squash & Fitness Club, London, UK*
Pool Attendant, *City of London School for Girls, London, UK*
Sports Officer, *Tandridge Trust, Oxted, UK*
Director of Sport, *University of East Anglia, Norwich, UK*
Golf Membership Sales Advisor, *De Vere Hotels and Leisure Ltd, UK*
Leisure Club Supervisor, *The Bellhouse Hotel, Beaconsfield, UK*
Leisure Assistant, *The Bellhouse Hotel, Beaconsfield, UK*
Outdoor Experience Manager, *Holnicote Estate Office, West Somerset, UK*
Operations Manager, *Shakespeare Birthplace Trust, Stratford-upon-Avon, UK*
Spa General Manager, *Shire Hotels Ltd, Fareham, UK*
Head of Treatments, *Stoke Park Club, Stoke Poges, Buckinghamshire*
Spa Manager, *Shire Hotels Ltd, Kettering, Northamptonshire, UK*
Spa Therapist, *Virgin Active, Various locations, UK*
Duty Manager, *Greenwich Leisure Ltd, Barnet Copthall, UK*
Technical Support Officer, *Edinburgh Leisure, Edinburgh, UK*
Senior Advertising Sales, *The Leisure Media Company Ltd, Hitchin, Herts, UK*
Area Sales Manager, *Greenwich Leisure Ltd, SE18, UK*
Swim Manager, *Virgin Active, Hammersmith, UK*
Gym Manager, *The Gym Group, Ealing, UK*
Assistant Manager Sales and Service, *Greenwich Leisure Ltd, Swiss Cottage, London, UK*

for more news and jobs updated daily visit
www.leisureopportunities.co.uk

We are seeking a **part-time Fitness Instructor** for our gymnasium in our London clubhouse.

Duties include:

- Ensuring the efficient and safe running of the gymnasium
- Ensuring the equipment is kept clean and tidy throughout the day
- Offering advice, instruction and safety points to users where appropriate
- Opening and closing the gymnasium
- Keeping up-to-date with fitness and exercise knowledge
- Maintaining the highest standards of service and hospitality at all times.

The successful candidate will have experience in a similar position gained in a 4*+ establishment, the ability to work well under pressure and be a team player. Excellent command of spoken English is essential. 25 hours per week on a rota basis, including weekends.

Benefits include pension, life cover, meals on duty and buying or selling of holiday.

The Royal Automobile Club is a private members Club, one of Europe's largest and most prestigious, with clubhouses in London and Surrey, offers it's members the very finest facilities including restaurants, bars, meeting and banqueting suites, accommodation and sports areas.

All applicants must be eligible to live and work in the UK.
Please apply to debrab@royalautomobileclub.co.uk

CLOSING DATE:
2 September 2011.



Freelance Personal Trainer

Cheltenham

Monthly rent £350



REACH FITNESS is a successful independent gym located in the centre of Cheltenham. We have a strong emphasis on providing the highest level of knowledge and expertise to our customers. We are looking for PTs who we feel will complement this ethos. We offer an incredible learning environment in which we all develop and share knowledge on the latest research and best practice.

We will be prioritising candidates who are motivated and business minded with a keen willingness to learn and develop.

CVs and covering letters to henry@reachfitness.co.uk
Contact number: Henry Tosh 01242 257700 / 07766566854

Go the extra mile.



Organise one!

Organise a Sainsbury's Sport Relief Mile in your community - there's no better way to take part in the UK's biggest year of sport. We'll help you every step of the way.
www.sportrelief.com/the-mile



©2011 Sainsbury's. All Rights Reserved. Sainsbury's, Sainsbury's Sport Relief and Sainsbury's Sport Relief Mile are trademarks of Sainsbury's. Sainsbury's Sport Relief Mile 2012 is a registered trademark of Sainsbury's.



Senior Sales Consultant - South

This is a rare and exciting opportunity to join the expanding team at Precor UK. Precor prides itself on delivering a first class member, design and service experience. It has a consistent track record for introducing major innovation to the fitness industry and is part of the Amer Sports Corporation, one of the world's leading sporting goods companies. The remuneration package will reflect the importance of this role.

Applicants should have:

- A comprehensive industry knowledge
- A proven track record of selling, ideally within the health and fitness equipment sector
- Experience of local authority procurement
- Experience leading a field-based sales team
- Project and account management experience

For a copy of the job description or to apply, e-mail your CV with a covering letter to Jez Whitting at: jez.whitting@precor.com

www.precor.com
www.amersports.com



leisure opportunities
joblink

Book a joblink with us and we'll put your logo and company name on every page of the Leisure Opportunities website www.leisureopportunities.co.uk

This advert will have a hyperlink to your website, where you can list all the job vacancies in your company.



Go to www.leisureopportunities.co.uk and click on the link to see the latest jobs from...



TO BOOK Call: +44 1462 471747
and start getting applications for your jobs IMMEDIATELY!

New-look Apollo Cinema for Rhyl

Rhyl's Apollo Cinema has reopened – six months after the venue closed to undergo a £2.5m refurbishment designed by EWA Architects.

All five screens at the sea-front venue now incorporate Sony 4k digital projection, RealD 3D technology and Dolby digital sound systems.

Denbighshire County Council and the Welsh Assembly Government funded the renovation, which has also included the creation of a licensed bar area and a Costa Coffee outlet.

Tania Jones, general manager of the cinema, said: "It has been our goal to bring the Rhyl cinema up to date, with the latest cinema technology, to provide the town with a thriving entertainment hub.



Apollo Cinema in Rhyl now includes digital project and 3D technology

"The town deserves access to the best quality viewing experience, and we are committed to ensuring Rhyl can experience their choice of film the way they should be presented."

Pub/restaurant consumer spending increases in July

Britons are continuing to eat and drink out after a number of pub and restaurant groups saw an increase in spending for July, according to the latest Coffer Peach Business Tracker.

The performance of more than 20 major UK operators is charted by the tracker, which

reported a 1 per cent growth in like-for-like sales and a 3.1 per cent increase in total sales.

Trevor Watson, director at Davis Coffer Lyons – part of the Coffer Group, said: "The sector continues to grow against a backdrop of weak consumer confidence."

Latest Silverstone plans submitted

Silverstone has submitted a "comprehensive" planning application for the next phase of its masterplan to safeguard the venue as the home of the British Formula One Grand Prix.

It follows the completion of a multi-million pound pit and paddock complex, which was unveiled earlier this year and boasts 41 garages; a media centre; and three large halls.

The latest plans – lodged with South Northamptonshire District Council and Aylesbury Vale District Council – include the creation of a business park; three hotels; a motorsport museum; and a kart track.

Silverstone Holdings managing director Richard Phillips said: "This is the most important initiative that Silverstone has taken in its 60 year history.

"Approval of this planning application will help maintain Silverstone's position as a leading



Cinema takings were up despite a fall in admissions

global centre for sport, leisure, education and technology and support its vision of becoming a world-leading motor sport destination."

An outdoor stage and an education campus also forms part of the scheme, which conforms with the Silverstone Development Brief.

- ACE +44 (0)1669 631 210
www.acerprises.org.uk
- Arts & Business +44 (0)20 7378 8143
www.aandb.org.uk
- ALVA +44 (0)20 7222 1728
www.alva.org.uk
- Arts Council +44 (0)20 7333 0100
www.artscouncil.org.uk
- ASVA +44 (0)1786 475152
www.asva.co.uk
- BALPPA +44 (0)20 7403 4455
www.balppa.org
- BHA +44 (0)845 880 7744
www.bha-online.org.uk
- BICM +44 (0)845 217 1811
www.bicm.co.uk
- BISL +44 (0)20 8780 2377
www.bisl.org
- CCPR +44 (0)20 7976 3900
www.ccpr.org.uk
- CMAE +44 (0)1334 460 850
www.cmaeurope.org
- Countryside Agency +44 (0)1242 521381
www.countryside.gov.uk
- CPRE +44 (0)20 7981 2800
www.cpre.org.uk
- English Heritage +44 (0)870 333 1181
www.english-heritage.org.uk
- FSPA +44 (0)2476 414999
www.sportsandplay.com
- FIA +44 (0)20 7420 8560
www.fia.org.uk
- HHA +44 (0)20 7259 5688
www.hha.org.uk
- IAAPA +1 703 836 4800
www.iaapa.org
- IEAP +44 (0)1403 265 988
www.ieap.co.uk
- Institute of Hospitality +44 (0)20 8661 4900
www.instituteofhospitality.org.uk
- ISPAL +44 (0)845 603 8734
www.ispal.org.uk
- LPF +44 (0)1462 471932
www.leisureprop.com
- LMCA +44 (0)1278 436910
www.lmca.info
- MLA +44 (0)20 7273 1444
www.mla.gov.uk
- NPFA +44 (0)20 7833 5360
www.playing-fields.com
- People 1st +44 (0)870 060 2550
www.people1st.co.uk
- REPs +44 (0)20 8686 6464
www.exerciseregister.org
- SAPCA +44 (0)24 7641 6316
www.sapca.org.uk
- Sports Aid +44 (0)20 7273 1975
www.sportsaid.org.uk
- Sport England +44 (0)8458 508 508
www.sportengland.org
- Springboard +44 (0)20 7497 8654
www.springboarduk.org.uk
- SkillsActive +44 (0)20 7632 2000
www.skillsactive.com
- Tourism Management Institute +44 (0)1926 641506
www.tmi.org.uk
- Tourism Society +44 (0)20 8661 4636
www.tourismsociety.org
- VisitBritain +44 (0)20 7578 1000
www.visitbritain.com
- World Leisure +1 250 497 6578
www.worldleisure.org