

€190m funding boost for Ireland tourist attractions

By **Pete Hayman**

Irish tourism minister Mary Hanafin has announced that "some €190m (£158m)" is to be invested in upgrading and developing new tourist facilities over the next six years.

Funding will be focussed on improvements at a number of the country's existing attractions and the upgrading of infrastructure to boost cycling, walking and water-based activities and heritage sites.

Nearly €4m (£3.3m) will be allocated through Fáilte Ireland's Tourism Capital Investment Programme as part of the wider investment, which will support four projects: the



IMAGE: TOURISM IRELAND/HOLDER LEITE

Slieve League will receive nearly €2m as part of the investment

Clare Coastal Walks; the Lough Key Marina; Slieve League and Foynes Flying Boat Museum.

Nearly €2m (£1.7m) of the Fáilte Ireland funding has been set aside for an environmental

management project led by Donegal County Council at Slieve League to protect the site and enhance visitor experience.

Nearly €1.2m (£998,000) will help complete the develop-

ment and fit-out of the terminal building at Foynes Flying Boat Museum to improve access.

Plans for a 12.7km (7.9-mile) coastal route between Doolin and Hags Head near Liscannor, County Clare, has secured €186,490 (£155,000), while efforts to provide new facilities at Lough Key Marina have received €525,000 (£436,000).

Hanafin said: "The tourism industry continues to face a very difficult international economic climate and the government, in partnership with the industry, is helping to meet this challenge through the provision of significant additional tourism capital funding in the coming years."

easyGroup unveils plans for new budget gym chain

Fore Fitness secures brand licensing deal to launch easyGym venture next year

By **Pete Hayman**

easyJet founder and entrepreneur Sir Stelios Haji-Ioannou has unveiled plans to expand the easyGroup vehicle, with the UK launch of a new budget fitness club chain in 2011.

The easyGym venture is the result of a partnership with Fore Fitness, a subsidiary of Fore Capital Partners which has agreed a licensing deal to run and market the gym chain.

easyGym will aim to provide consumers with "conveniently-located" facilities at affordable



Sir Stelios is set to move into the health and fitness sector

prices using a similar model to the one used across the easy group of companies, which will focus on value for money.

Sir Stelios said: "As a gym user, I have noticed many inefficiencies in the system and believe there is a simpler and more efficient way to cater for the needs of the consumer."

"Together with Fore Fitness and its investors we will aim to offer value for money in this sector. My resolution following this deal is to go to the gym at least 3-4 times per week!"

Paul Lorimer-Wing, joint CEO of easyGym, added: "Securing the rights to use the easyGym brand is a significant achievement for Fore Fitness."

Green light for Salford stadium

Salford City Council (SCC) has approved detailed plans for a new £26m stadium at Barton-upon-Irwell, which will provide a home for Salford City Reds rugby league team.

Preparatory work has already started on site to allow the 20,000-capacity community venue to be ready ahead of the 2012 Super League season.

The new stadium is to be built and managed by Peel as part of a joint venture with the council.

CONTACTS

THE LEISURE MEDIA COMPANY

Portmill House, Portmill Lane,
Hitchin, Herts SG5 1DJ, UK
Tel: +44 (0)1462 431385
Fax: +44 (0)1462 433909
e-mail: please use contacts'
fullname@leisuremedia.com

Subscriptions

Julie Albone 01462 471915
subs@leisuremedia.com

Editor

Liz Terry 01462 431385

Managing Editor

Tom Walker 01462 471934

Journalists

Pete Hayman 01462 471938

Martin Nash 01462 471933

Sarah Todd 01462 471927

Designer

Ed Gallagher 01905 20198

Internet

Dean Fox 01462 471900

Tim Nash 01462 471917

Sales Team Manager

Annie Lovell 01462 471901

Account Managers

Recruitment, training, tenders

Paul Thorman 01462 471904

Simon Hinksman 01462 471905

Emma Matthews 01462 471907

Simon Hancock 01462 471929

Property desk

Simon Hinksman 01462 471905

Spa Opportunities

Emma Matthews 01462 471907

Financial Controller

Sue Davis 01395 519398

Financial Administrator

Denise Gildea 01462 471930

Circulation Manager

Michael Emmerson 01462 471932

To subscribe to Leisure Opportunities, log on to www.leisuresubs.com email: subs@leisuremedia.com tel +44 (0)1462 471913 fax +44 (0)1462 433909. Annual subscription rates are UK £31, Europe £41, Rest of world £62, students UK £16. Leisure Opportunities is published fortnightly by The Leisure Media Company Limited, Portmill House, Portmill Lane, Hitchin, Herts SG5 1DJ, UK and is distributed in the USA by SPP, 75 Aberdeen Road, Emigsville, PA 17318-0437. Periodicals postage paid at Manchester, PA POSTMASTER Send US address changes to Leisure Opportunities, c/o PO Box 437, Emigsville, PA 17318-0437.

The views expressed in print are those of the author and do not necessarily represent those of the publisher The Leisure Media Company Limited. All rights reserved. No part of this publication may be reproduced, stored in a retrieval system or transmitted in any form or by means, electronic, mechanical, photocopying, recorded or otherwise without the prior permission of the copyright holder. Printed by Warners Midland plc.

©The Leisure Media Company Limited 2010
ISSN 0952/8210

Football event to mark venue opening

£32m Ravenscraig Regional Sports Facility set to open with 24-hour tournament

By Pete Hayman

A 24-hour football event will be held to mark the opening of the £32m Ravenscraig Regional Sports Facility, North Lanarkshire, at the end of September.

The event will begin on 30 September to celebrate the opening of the complex – part of a wider bid to transform a former steelworks and backed by Scottish Government.

A full-sized indoor football pitch with spectator seating; a full-sized outdoor 3G pitch and six floodlit five-a-side pitches – all featuring Polytan surfaces – are among the facilities. The pitch installer was WH Malcolm.

A sports hall with nine badminton courts and a Junckers SylvaSport Premium sprung wooden floor; a six-lane, 135m Mondo Sportflex Super X



The Ravenscraig facility includes a full-sized indoor football pitch

running track; throw and jump areas; and a strength and conditioning area for athletes also form part of the centre, as well as a 500sq m (5,381sq ft) fitness suite equipped by Technogym, dance studios and a sports injury clinic.

North Lanarkshire Leisure (NLL) and North Lanarkshire

Council contributed funding towards the development, which will be operated by the trust on behalf of the council.

The venue is to be used during the International Children's Games in 2011, as well as offering training facilities for London 2012 and Glasgow 2014 athletes.

Sport England launches new efficiency strategy

By Pete Hayman

Five new groups of approved suppliers have been announced by Sport England to help its partners achieve efficiency savings and improve the way facilities provision is planned.

The Strategic Planning Framework for Sport scheme will enable sports organisations to manage procurements efficiently and benefit from reduced rates through a competitive tendering process.

Sport England partners will be invited to sign up for the scheme to receive a list of service providers for each group. The list will contain details of maximum day rates and guide a tender process.

Initially set up to drive Sport England's own savings, groups are now open to partners and



The strategy aims to improve the way facilities are planned

include the Strategic Planning group, which comprises Kit Campbell Associates (KCA); Neil Allen Associates (NAA); Continuum Sport and Leisure; and Leisure Futures.

KCA and NAA form part of the Needs Assessment group with Knight, Kavanagh and Page (KKP), while NAA and

KKP comprise the Playing Pitch Strategies and the Sport Specific Facility Strategies groups; with the latter also including Trio Plus.

The Town Planning Support group includes Bidwells; Entec; Impact Consulting; Land Use Consultants; Nathaniel Lichfield and Partners; and Martin Elson.

Sport England property director Charles Johnston said:

"At a time when public sector finances are under increasing pressure, it's important that we do everything we can to secure value for money from every pound spent. That's why we're helping our partners to be more efficient."

"We want them to get the best possible advice to ensure that the right facilities are built in the right places for people to use for years to come."

£1m cash boost for St Fagans museum

New funding to help attraction "lay foundations" for long-term redevelopment plans

By **Martin Nash**

Welsh heritage minister Alun Ffred Jones, has announced £1m of Assembly Government funding for St Fagans: National History Museum near Cardiff.

The funding, which follows on from £400,000 last year from the government, will enable the museum to carry out essential maintenance and modernisation works across the site, such as upgrading its electrical and water capacity.

The work is also designed to lay the foundations for a longer term redevelopment of the site by ensuring it is capable of supporting proposed new galleries and visitor services.

This project recently received a £450,000 Heritage Lottery Fund grant for the museum to work up more detailed plans.



New galleries and visitor services are proposed for the attraction

Under these redevelopment proposals, St Fagans would see the introduction of the National Archaeology Collection and an extended time-line, which will cover the 250,000 years of human habitation of Wales.

There would be investment in interpretation across the site

and the creation of a new indoor space in the grounds, providing an all-weather facility away from the existing main building. Existing galleries and facilities will also be upgraded.

St Fagans: National History Museum opened in 1948 as the UK's first open-air museum.

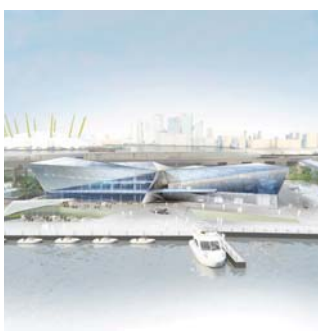
Siemens to build £30m London visitor attraction

By **Luke Tuchscherer**

Siemens, the international engineering and technology firm, is to build a £30m visitor attraction in London.

The Siemens Pavilion will include exhibition space, a 300-seat auditorium and facilities for educational tour groups. There are plans for interactive exhibits, seating areas, a café and a shop, as well as outdoor seating areas and exhibition space.

The centre, which is due to open in early 2012 at the western end of the Royal Docks,



The new Siemens Pavilion will open its doors in early 2012

is expected to attract around 100,000 visitors a year. It is also hoped that school groups from across London will use the facility for educational trips.

Andreas J. Goss, chief executive of Siemens UK, said: "Our aim is to create an attractive focal point that celebrates London's ambition and leadership in green technologies and sustainability."

Siemens has appointed a consortium comprising Pringle Brandon and Wilkinson Eyre Architects to design and build the attraction. The three-storey building will cover an area of 3,690sq m (39,720sq ft) and the total area to be developed is 7,000sq m (75,350sq ft).

Locum Consulting is also involved with the scheme.

IN THIS ISSUE

04 SPORT

- ▶ Mayor unveils £4m fund
- ▶ New hub for East Kibride

06 HEALTH & FITNESS

- ▶ Bangor contractor named
- ▶ New Selby facility opens

08 HOSPITALITY

- ▶ Calls to end 'macho culture'
- ▶ Sleeperz to expand estate

10 ARTS & CULTURE

- ▶ New venue for Doncaster
- ▶ Swansea plans approved

11 TOURISM

- ▶ UK museums 'worth £1bn'
- ▶ Irish tourism decline 'slows'

12 PROPERTY

- ▶ Stadium bid turned down
- ▶ GBC to mull Gravesend plans

13 PROPERTY/TENDERS

15 TRAINING

- ▶ FCW to fund Welsh project
- ▶ Coca Cola's swimming boost

16 TRAINING DIRECTORY

19 JOBS

THE LEISURE MEDIA COMPANY PUBLISHES



IN BRIEF

Swansea Council to review operations

► An "in-depth" investigation into alternative management options for a range of indoor leisure facilities across Swansea could be carried out under plans put forward by the local authority. Swansea Council's cabinet is being asked to back a review of facilities such as the Grand Theatre, the boating lake at Singleton Park, a crazy golf site at Mumbles and seven community leisure centres. Some council-owned sports pitches and the Ashleigh Road golf course also comprise the leisure facilities that could be subject to a review, which comes amid efforts to reduce public spending.

Demolition to start on former Hull FC stadium

► Hull City Council (HCC) has begun demolition work at the former home of Hull FC rugby league team in order to make way for a new academy. The Boulevard – last used by the club in 2003 before it moved to the KC Stadium – has fallen into disrepair and now represents a health and safety risk, while also having become a target for vandals. HCC said that original foundation stones from the stadium have been retrieved and will be used in a memorial, while the rugby posts will be donated to West Hull FC Rugby Club.

Temporary pool to open at Wembley school

► A temporary swimming pool is scheduled to open at Chalkhill Primary School in Wembley, North London, on 13 September as part of a capital-wide project to improve access. Forming part of the PlaySport London: Make a Splash programme, the facility is designed to help towards London mayor Boris Johnson's plans to create a lasting sporting legacy from the 2012 Olympics.

London mayor unveils £4m sport fund

Community organisations invited to apply for grants to help combat social issues

By **Pete Hayman**

London mayor Boris Johnson has launched a new £4m fund to support projects using sport to help tackle a range of social issues across the capital, such as crime and unemployment.

Community organisations can apply for funding until 1 October as part of a bid to improve the health of Londoners, as well as helping to drive up participation.

Successful applicants will receive between £50,000 and £250,000 over a two-year period, with bids to be judged on three main criteria: supporting 'at risk' adults between 16-25 years old; increasing participation; and community development.



The mayor hopes the fund will help groups to boost participation

The first round of bidding for funding is expected to provide support to 12 schemes totalling £2m, with a second round set to be held in 2011.

Johnson said: "[Sport] can provide immense mental stimulation and as such help

tackle issues such as crime and a lack of community cohesion.

"With the greatest sporting spectacular, the 2012 Games, soon upon us, we must not lose sight of our promise to deliver a genuine grass-roots sporting legacy for all Londoners."

ODA approves temporary water polo arena plans

By **Pete Hayman**

A temporary water polo arena, which will be used during the London 2012 Games, has been approved by the Olympic Delivery Authority (ODA).

The proposed venue – which has been designed by David Morley Architects – includes a sloping inflatable roof and will be able to accommodate 5,000 spectators during Games time.

Facilities will include a 37m x 23m competition pool and a



The planned arena is designed to be dismantled and reused

slightly smaller warm-up pool. The arena has also been designed to be dismantled and

redeployed elsewhere in legacy mode – either in full or in part.

ODA chief executive David Higgins said: "Its innovative shape and lightweight structure will look great and work well for spectators and athletes."

London 2012 organising committee chair Sebastian Coe added: "Bringing Water Polo into the Olympic Park and locating it next to the Aquatics Centre at the Gateway to the Games will be a huge boost to the profile of the sport."

Water starts flowing at 2012 canoe slalom venue

Water has started flowing down the course of the new Lee Valley White Water Centre near Waltham Cross, Hertfordshire, which is set to stage canoe slalom events at the London Olympics.

The complex is the first new-build 2012 venue to be completed and will be owned by the Lee Valley Regional Park Authority both before and after the Games.

Work is now underway on the internal fit-out of a two-storey facility building as part of the new venue, while landscaping works have also commenced. Construction work on the centre's lakes and competition courses has already been completed.

New community hub for East Kilbride

Sports facility to form part of a bid to create a lasting legacy from Glasgow 2014

By **Pete Hayman**

A new community sports hub has been unveiled at Calderglen High School, East Kilbride, as part of wider efforts to create a lasting legacy from the 2014 Commonwealth Games.

Forming a central part of the 2014 Legacy Plan, the hub is one of eight initial facilities to be created across Scotland and aims to boost the number of opportunities for people looking to participate in sports.

Each of the proposed hubs is designed to focus on meeting the needs of the local community and will provide clubs and sports groups with improved access to facilities.

Hubs will also use volunteers to help promote the development of physical activity.

£350k grant for Sheffield facility

Plans to develop a new community football facility at Lowfield Park, Sheffield, have been given a £350,000 funding boost by the Football Foundation.

The grant will go towards the creation of a new all-weather synthetic pitch with floodlights as part of wider efforts to regenerate the area, which also includes an overhaul of Lowfield School and improvements to open spaces.

A new building – U-Mix – will also accompany the pitch, which will house changing facilities and a range of activities for local young people, including space for dance, performing arts and training opportunities.



The new community hub is the first of eight planned for Scotland

Based at sports centres and schools, hubs will be backed with a yearly budget of £1.5m Lottery funding allocated by sportscotland for four years.

Facilities at Calderglen include two grass pitches, a floodlit 3G pitch, a games hall and three gym halls. A total of

five clubs and groups have signed up, with a further six expressing interest.

Scottish sport minister Shona Robison said: "The hub at Calderglen is an excellent example of providing the local community with a place to get active and have fun."

RFU brings in new financial rules



The RFU is clamping down on the financial management of clubs

By **Tom Walker**

The Rugby Football Union (RFU) has brought in a series of new regulations to ensure tighter controls over clubs' financial management.

RFU Championship clubs will have to provide a financial statement before 1 November to be scrutinised and, additionally, the sanctions imposed on clubs for going into insolvency have been toughened up.

If a club enters administration or liquidation during the regular season, they will be deducted 20 points, entered into the relegation pool and have a 10-point deduction applied to them in the pool.

If a club in the promotion pool goes into administration in the play-offs or semi-final/final stage, they will be docked 20 points for the current season in addition to 10 points ahead of the following season.

IN BRIEF

Oxfordshire boxing project secures backing

► South Oxfordshire District Council has agreed to contribute £206,230 towards efforts to help Berinsfield Boxing Club become a centre of excellence for the sport. Work has now started on a £350,000 extension of the club to double the size of existing facilities. When complete, it will boast a training area, upgraded changing rooms and a recreation zone. In addition to the council's contribution, the scheme received a £50,000 grant from the Amateur Boxing Association; £50,000 from Oxfordshire County Council; and £40,000 from the Robin Greaves Sports Foundation.

£500k Harborough plans 'put on hold'

► Doubts have been cast over plans for a £500,000 upgrade of facilities at a leisure centre in Market Harborough as a result of public spending cuts. According to the *Harborough Mail*, Harborough District Council has been forced to delay a revamp of Harborough Leisure Centre in order to implement cost-cutting measures. Proposals included an overhaul of the pool's changing rooms and improvements to the toddlers' Tiger Pool. Meanwhile, free swimming for under-16s and over-65s has also ended.

Local authority forced to scrap BMX proposals

► Epsom and Ewell Borough Council has axed plans for a new BMX facility at Hook Road Arena as a result of public spending cuts. The facility was due to be funded using money received by the council as part of the wider Playbuilder scheme. However, the government's decision to withdraw funding from all year two projects yet to be committed to a contractual agreement means the council has been forced to shelve the plans.

IN BRIEF

SDDC launches sports strategy consultation

► South Derbyshire District Council (SDDC) has unveiled a 12-week consultation to enable local residents to comment on a new framework designed to improve fitness levels and boost participation. The new sport and health strategy outlines South Derbyshire Sport's main aims and objectives for a five-year period between 2011 and 2016, which include an expansion of walking, cycling and swimming activities. Increased cultural provision, the delivery of Village Games events, and more opportunities for disabled people are also among the aims set out by the strategy.

Future of Lancashire leisure centre secured

► South Ribble Borough Council, Lancashire County Council and Priory Sports and Technology College in Penwortham have reached a deal to secure the future of a local leisure facility. Penwortham Priory Leisure Centre is now set to undergo an extensive revamp after the three parties worked to resolve child protection concerns raised by the college in relation to the dual-use complex. An enhanced fitness suite and new dryside changing facilities are included as part of the scheme, which is due to start in September.

GLL awarded Carbon Trust Standard

► Greenwich Leisure Limited (GLL) has become one of the first leisure trusts to be awarded the Carbon Trust Standard. GLL, which operates 70 public leisure centres on behalf of thirteen London Borough authorities, received the title after taking action on climate change by measuring, managing and reducing its carbon emissions by 2 per cent between January 2007 and December 2009.

Farrans nets Bangor leisure contract

New £38m facility to boast Northern Ireland's first Olympic-sized swimming pool

By **Pete Hayman**

Belfast-based company Farrans Construction has been appointed by North Down Borough Council (NDBC) to deliver a new leisure complex in Bangor, Northern Ireland.

The proposed £38m facility – designed by McAdam Design alongside S&P Architects – will include the country's first Olympic-sized swimming pool and is set to be located at Valentine Playing Fields.

Other facilities at the planned complex include a fun pool, a fitness suite, an eight-court sports hall, a climbing wall and squash courts. Artificial grass courts and five-a-side football pitches are also proposed.

John Montgomery, mayor of North Down said: "This facility will be a tremendous local legacy from the London 2012 Olympic and Paralympic Games and will deliver long-term



The £38m complex is due to open to the public by autumn 2012

economic and sporting benefits to the people of North Down and the wider community."

Northern Ireland sports minister Nelson McCausland added: "This will be Northern Ireland's first Olympic sized swimming pool. As a regional centre of excellence, it will be a state-of-the-art facility to be enjoyed by all the people of Northern Ireland. Also, the commencement of this project

will be a major boost to our local construction industry."

North Down was selected by the Northern Ireland Executive in 2007 to host the new facility, which will form the first phase of Sport Northern Ireland's Elite Facilities Programme.

The new complex, which is being backed with up to £15m of Northern Ireland Executive funding, is due to be completed by autumn 2012.

Scheme targets SPL supporters

A new scheme has been launched by the Scottish Premier League (SPL) Trust, the Football Pools and the Scottish Government to tackle a number of men's health issues.

More than £250,000 has been provided by the Football Pools in addition to government support for the Football Fans in Training initiative, which aims to improve health levels across the country.

Operating out of each of the 12 SPL clubs, the scheme will allow fans to sign up for free sessions in a bid to boost physical activity and improve diets.

Enfield facilities set for overhaul

By **Tom Walker**

Enfield Council has begun consultations with Fusion Leisure over a £8.9m redevelopment programme of its leisure services and facilities.

Work is due to commence at the first centre – Southbury Leisure Centre – in November, followed by Southgate and Albany Leisure Centres in 2011.

Proposed alterations at the Southbury facility include improvements to the gym, refurbishment of the dry changing areas and improvements to the group exercise studios.

Fusion, which operates the facilities on behalf of the local authority, has appointed Oxford-based The Clarkson



Bambos Charalambous with Fusion's Tim Mills (standing)

Alliance to design and manage the improvement programme.

Bambos Charalambous, cabinet member for young people, leisure, culture and the Olympics for Enfield Council, said: "The revamp plans are progressing well and we're delighted that things have moved on so swiftly."

New-look Abbey Leisure Centre opens

Selby venue reopens with new 75-station gym following £1.1m renovation scheme

By **Pete Hayman**

A new health and fitness centre has opened to the public at the Abbey Leisure Centre in Selby, North Yorkshire, following a £1.1m renovation of the venue.

The overhaul of the Profiles Health and Fitness Centre was led by Wigan Leisure and Culture Trust (WLCT), which was appointed by Selby District Council (SDC) to run the centre.

At the heart of the new 180sq m (1,938sq ft) facility is a 75-station gym equipped by Technogym, as well as a 70sq m (753sq ft) dance studio, a spinning studio, and a health suite and consultation room.

Gillian Ivey, chair of SDC's social board, said: "This new arrangement has facilitated



The centre now boasts a 75-station gym equipped by Technogym

investment in the services at Abbey Leisure Centre.

"The deal also represents a significant long-term saving for the council, helping us to deliver better services at less cost. As such, this work supports two of Selby District

Council's goals: supporting healthier communities and making better use of resources."

WLCT's Bob Lancaster added: "We are delighted our members will have access to some of the most specialised equipment available in the industry."

New gym machines for Gwynedd leisure centres

By **Pete Hayman**

Five leisure centres in Gwynedd, North Wales, have benefited from new fitness machines, following a £160,000 investment by the Gwynedd Council.

Around 28 Technogym cv and resistance machines have been installed at Glaslyn Leisure Centre, Porthmadog, and Dwyfor Leisure Centre in Pwllheli as part of the scheme.

The council's investment has also resulted in the provision of



The new machines at Plas Silyn Leisure Centre in Penygroes

around 18-20 new machines at leisure centres in Penygroes, Dolgellau and Bethesda.

Council leader Dyfed Edwards said: "Despite difficult financial context, investing in state-of-the-art equipment means that local people will be able to access this excellent service at a reasonable cost."

Roy Owen, the council's lead member for leisure, added:

"With the addition of these new and modern fitness machines in leisure centres across Gwynedd, we're confident that our facilities will encourage even more residents to keep fit."

IN BRIEF

'Massive' budget cuts for Edinburgh Leisure

► Edinburgh Leisure is reportedly set to have its budget cut by £347,000 from April next year. According to the *Edinburgh Evening News*, the city council has proposed that the company will have its budget cut for the second successive year, having been forced to shut six crèches as a result of a £379,000 funding cut last year. Edinburgh Leisure's interim chief executive John Comiskey said: "As with any organisation which receives an element of its income from the public purse, Edinburgh Leisure will be required to change its business plans to take account of the proposed government funding cuts next year."

Fitbug secures US deal with Scifit

► UK-based Fitbug Holdings, provider of online fitness services, has secured a partnership agreement with equipment manufacturer Scifit. The deal will see Fitbug's personal well-being technology – which includes a small device, 'the bug', that calculates daily exercise levels – being offered to Scifit's client base in the US. Scifit specialises in supplying equipment to military, rehabilitation, medical and education programmes.

Cox Green facility to introduce simulator

► The recently-opened Cox Green Leisure Centre in Maidenhead, Berkshire, is to introduce intelligent gaming technology – the Dogfight virtual plane simulator – into its workout room. The Dogfight, which offers a full featured flight simulator interfaced with a recumbent exercise bike, will be supplied by Instyle Fitness and is available for members to use from September 2010.

énergie Fitness set for 'rapid' Middle East expansion

Health club operator énergie Fitness is poised for a QAR100m (£17.9m) roll-out throughout the Middle East and North Africa under plans backed by GSSG Holdings.

GSSG, the Middle Eastern master franchise owner of the chain, plans to open three sites: Barwa Clubhouse and Landmark, both in

Qatar; and at Cairo, Egypt – the first énergie club to open in North Africa. The énergie club at Barwa opened its doors in August.

Two clubs at Landmark – one for men and another for women – are due to launch on 1 November, while the proposed new Cairo club is scheduled to open on 1 December.

IN BRIEF

Green light for Nottingham hotel plans

► Plans for a new 65-bedroom hotel in the Lace Market area of Nottingham have been approved by Nottingham City Council. Proposals put forward by Maber Associates on behalf of Inderjit Johal include a renovation of Catherine House and the part-demolition of an adjacent 1960s property. The six-storey hotel will feature a reception area, a breakfast lounge and a bar on the ground floor, with Catherine House – dating back to the Victorian era – forming part of the scheme.

Grant to help improve Swansea 'gateway'

► A scheme to extend and improve Swansea's Grand Hotel – located opposite the city's railway station – has secured funding from the local authority. The property underwent a £2.3m renovation in 2003 but owner High Street Hotels now plans to take over neighbouring sites to meet growing demand from both leisure and business travellers. Swansea Council has approved a grant through its Building Enhancement Programme.

Liverpool hotels report 'record' demand

► Demand for hotel rooms across the Liverpool region in July reached "record-breaking" levels, according to a study released by The Mersey Partnership (TMP). Nearly 95,000 rooms were sold in July, which is a 22 per cent increase on July 2009 and an 11 per cent growth on July 2008 – the year Liverpool was European City of Culture. LJ Research conducted the study on behalf of the City Region's tourist board – part of TMP – and also found that demand for rooms for the first-half of the year increased by 17 per cent compared with the same period in 2009.

Calls to end kitchens' 'macho culture'

Michelin-starred chef urges sector to offer the right training for female workers

By Tom Walker

Michelin-starred chef Michael Caines has called on employers in the industry to stamp out the 'macho culture' that is 'inhibiting kitchens' across the UK.

At the launch of the Women 1st Female Chefs' Development programme, he said: "Some of the discriminatory practices that hinder the progress of female chefs don't belong in the 21st century workplace and should not be tolerated.

"Chefs are one of the hardest positions to fill and the industry needs to secure the best talent rather than shun part of the workforce. It is therefore crucial for employers to provide the right training for their female chefs to help take their careers to the next level."



People 1st revealed that more than 60 per cent of chefs are male

The Female Chefs' Development Programme, founded by sector skills council People 1st, aims to deliver chef training and help bridge the management and personal skills gap among female chefs.

Research from People 1st, found that more than 60 per

cent of chefs are male, a percentage that significantly increased within fine dining restaurants. The research found that unconventional working hours, coupled with a lack of training and suitable role models, have hampered the progress of female chefs.

M&B to offload 333 properties

Mitchells and Butlers (M&B) is to sell 333 of its late-night, "non-core pubs" to the Stonegate Pub Company for £373m.

The deal is in line with the company's strategy, announced in March, to withdraw from the lower price, drinks-led market and the late night high street bars and venues.

M&B chair John Lovering said: "The cash resources released by the sale programme will allow the company to accelerate growth into the informal eating out market."

The proposed sale is subject to the approval of the company's shareholders, but is expected to have been completed by the end of November.

Prezzo acquires Caffè Uno sites



Most of the newly-acquired properties are in south east England

By Martin Nash

Italian restaurant chain Prezzo has bought 11 sites owned by Caffè Uno Brasseries for £3.1m.

Three of the outlets currently operate under the Caffè Uno brand, in addition to six Brasserie Gerard and two Il Bertorelli-branded properties.

Prezzo has also acquired – for an undisclosed sum – the Caffè Uno trade mark from its parent company, Paramount

Restaurants, and has granted Paramount a licence to use the brand name for one year.

Most of the newly-acquired properties are located in south east England and the Home Counties. Although they will initially continue trading under their original brand name, the sites will ultimately undergo a refurbishment programme and be reopened in early 2011 under one of Prezzo's existing brands or as Caffè Uno.



The property will be located adjacent to the city's railway station

Sleeperz to launch in Newcastle

Budget chain to unveil second hotel in October 2011

By **Pete Hayman**

Budget hotel chain Sleeperz has appointed property consultants Robinson Low Francis (RLF) to help progress plans for the development of a 98-room hotel in Newcastle.

Preparatory work is now underway on the six-storey property in the heart of the city, which is due to open in October 2011 and will become the group's second site alongside its inaugural hotel in Cardiff.

The Newcastle hotel will be located on the site of the former Parcel Works at the

city's railway station and is in line with Sleeperz's strategy of occupying "irregular shaped sites" near transport hubs.

RLF has been appointed by Sleeperz to act as agent and quantity surveyor for the scheme, which also aims to capitalise on the growing trend in 'staycations' and efforts to attract more inbound tourists.

Paul Chesworth, a partner at RLF, said: "As the hotel construction sector continues to pick up, particularly in the budget hotel market, this is a great opportunity for RLF to strengthen its expertise."

London hoteliers continue to shine

London's hoteliers have seen occupancy levels for July increase by 3.1 per cent compared with the same period in 2009, according to new figures from PKF Hotel Consultancy Services.

With occupancy reaching 92 per cent and room rate also increasing by 21.1 per cent compared with July 2009, the capital's hotels saw rooms yield grow by a quarter to £128.35.

There was also encouragement for regional hotels as a 0.3 per cent increase in room rate was the first year-on-year growth in 2010.

PKF Hotel Consultancy Services partner Robert Barnard said: "The July figures for hoteliers across the UK are heartening. London continues to post positive results, as demand continues to strengthen compared to 2009."

This is a man's world... Or is it?

The industry must work to help female employees realise their full potential

Despite changes in legislation that have done much to remove the barriers to gender equality in the workplace, a career in hospitality can still present challenges for women.

Whether it is long working hours, an often highly pressured environment, or a male-dominated senior management structure, there is little doubt that 'staying the course' within the industry appears to be far more difficult if you are a woman. This is despite the fact that, according to People 1st, nearly 60 per cent of the industry's workforce is female, with the gender balance for hospitality managers being 50:50.

Outside the workplace, traditional views and practices around domestic arrangements still abound, where according to several recent British and American studies, women are generally expected to be responsible for 70 per cent of chores. Against this backdrop, Alessandra Alonso, Director of Shine People and Places, feels that "what British women manage to achieve in the sector is even more impressive".

Since 2003 Shine People and Places has run its own research in this area, and over the years the outcomes have been consistent. When asked about what may stop them achieving their full potential, women usually cite child birth and child care; organisational policies; lack of flexible working; and gender stereotyping as the most common.

By way of contrast, however, a recent survey undertaken by UKJobs.net found that two thirds of respondents, both men and women, preferred to be managed by men. According to the poll of 3,000 employees, women bosses are seen as difficult to work for, and nearly two thirds of the women surveyed and three-quarters of the men prefer to be managed by a man.

So are there subliminal in-built forces at work which create the barriers for women to advance in the industry? Not according to Alessandra Alonso who comments, "it is motherhood that creates the watershed between women who have and those who don't have a career in the sector".

While a great many women work in the hospitality industry, the key challenge seems to be the realisation of their full potential. Failure to address this problem, will mean a persistent difficulty in retaining women in the sector, resulting in a worrying loss of highly talented individuals at a time when the industry's growth forecasts remain buoyant.



Institute of Hospitality
Formerly HELMA

PHILIPPE ROSSITER
is chief executive
of the Institute of
Hospitality (IoH).
Leisure Opportunities is a member
benefit of the IoH,
for your free copy
call 01462 471913

IN BRIEF

New trust to operate Lincoln cultural venue

► The City of Lincoln Council (CLC) has confirmed that a new trust is to manage the Drill Hall from 1 October, following a review of its tourism, marketing and arts service. Lincoln Arts Trust will take over the running of the venue after agreeing a sustainable business plan with the council, which will also increase grant funding for the Drill Hall to £250,000 a year. CLC leader Darren Grice said: "During the review of this service, the executive acknowledged the importance of the Drill Hall in terms of meeting its objectives within the arts, and agreed to increase the grant it receives."

Culture continues to boost city's economy

► Liverpool City Council (LCC) has announced that the former European City of Culture's economy received more than £33m from hosting cultural events last year. A study carried out by Vector Research on behalf of the council found that events in Liverpool attracted 915,000 visitors, with expenditure worth £12 for every £1 invested by LCC. The figures compared with 1.5 million visitors in 2008 – Liverpool's year as European City of Culture – which was worth more than £40m. BDRC conducted the study for 2008.

Theatre 'central' to Oakengates schemes

► Proposals for a multi-million pound regeneration of Oakengates town centre in Shropshire are currently being finalised by Telford and Wrekin Council (TWC). Feedback received by TWC has identified the need to transform Market Street and ensure the town's theatre plays a more central role by linking with more community events and making use of its public space.

Green light for Doncaster arts venue

£22.3m complex to become the "centrepiece" of wider town centre development

By **Pete Hayman**

Doncaster Council has approved plans for the creation of a new £22.3m performance venue in the heart of the town – part of a £300m civic and cultural quarter development.

Arts Team – part of Renton Howard Wood Levin – has designed the new complex, which will boast a 600-seat main auditorium and a flexible, second space to cater for 200 seated or 400 standing.

Dance and drama studios; two spaces for learning and hospitality; and a café and bar area will also form part of the planned venue.

Whitelaw Turkington's plans for a new civic square have also been approved by the council,



The complex has received £9.1m support from Yorkshire Forward

which incorporate raised lawns and water features.

Jonathan Wood, cabinet member for business and regeneration for the council, said: "The venue and civic square will be major assets for our local economy."

The arts complex has benefited from Yorkshire Forward investment worth £9.1m as part of a £16.6m contribution towards the civic and cultural quarter project, the first phase of which is due for completion in spring 2013.

Swansea Council approves 'cultural hub' scheme

By **Pete Hayman**

Swansea Council has backed proposals for a joint venture scheme with two local universities, which aim to transform the city's Dylan Thomas Centre into a hub for creative industries.

The council's cabinet agreed in principle to enter into a Memorandum of Understanding with both the University of Wales (UW) and Swansea Metropolitan University (SMU) in order to progress the project.



The city's Dylan Thomas Centre

Plans for the Dylan Thomas Centre include housing UW's Global Academy, which will

deliver the Prince of Wales Innovation Scholarships in conjunction with local small and medium businesses and higher education institutions.

UW's business subsidiary, Awen; a refurbished Dylan Thomas exhibition; an SMU-led catering operation and a new base for the Dylan Thomas Prize would also be located at the venue, as well as the Dylan Thomas Prize Educational Programme to promote creative writing in schools.

Exhibition reveals shortlisted Fourth Plinth proposals

Six shortlisted commissions for the Fourth Plinth in Trafalgar Square have been revealed as part of a free exhibition being held at St Martin-in-the-Fields until 31 October.

Among the potential commissions is Elmgreen and Dragset's *Powerless Structures, Fig. 101*, Brian Griffiths' *Battenburg* and Allora

and Calzadilla's *Untitled (ATM/Organ)*, in addition to Katherina Fritsch's *Hahn/Cock*.

Other shortlisted entries include Hew Locke's *Sikandar* and Mariele Neudecker's *It's Never Too Late and You Can't Go Back*. The winning commission will replace Yinka Shonibare's *Nelson's Ship in a Bottle* at the end of 2011.

Museums 'generate £1bn a year'

UK heritage sites and galleries provided major economic boost in 2009

By **Tom Walker**

Britain's museums and galleries generated £1bn in revenue from overseas tourists during 2009, according to VisitBritain.

The figure comes from last year's *International Passenger Survey*, which included questions charting the activities undertaken by tourists while visiting the UK.

Of the 30 million inbound visits in 2009, around 7.7 million said they had visited a museum and a further 4.2 million had been to an art gallery during their stay.

The report also shows that, when measured on volume, the French are the most eager visitors to museums with about 960,000 visitors each, closely followed by the Americans, Germans and Spanish.

Although not appearing in the top ten in terms of volume, Brazilians and Argentinians were found to be avid museum visitors – nearly two-thirds had made a visit.



IMAGE: BRITAIN ON VIEW

Visitors flocked to UK cultural sites in 2009

The research also revealed that the longer the duration of the stay, the more likely a tourist will visit museums and art galleries. While people on a short stay are more unlikely to visit a cultural institution, 42 per cent of people who stay for two weeks or more will spend time at museums.

Irish inbound tourism decline 'slows' in June



IMAGE: TOURISM IRELAND/NTN

The tourism sector still faces tough times

By **Pete Hayman**

Ireland's Central Statistics Office (CSO) has reported that a decline in the number of UK residents visiting the country slowed during June, after monthly figures revealed a 3 per cent drop compared with 2009.

The rate of decline is far less than the 20 per cent drop when figures for June 2009 are compared with the previous year.

However, overall figures for the first half of the year revealed a 20 per cent fall in the number of visitors to Ireland, compared with the same six-month period in 2009.

Pier decision moves Scilly ferry scheme forward

Plans to improve the ferry link between the Isles of Scilly and Cornwall have been given a boost after the government granted listed building consent for work on Penzance's South Pier.

The Route Partnership – comprising Cornwall Council, the Council of the Isles of Scilly and the Duchy of Cornwall – was established to lead the scheme, which

will lead to the creation of new and extended harbour facilities in Penzance.

Cornwall Council voted in favour of the harbour proposals earlier this year after initial plans were rejected in late 2009. However, the government's decision to back the project marks the latest milestone in efforts to improve links between the islands and the mainland.

Changes to the funding formula

The government must ensure a fair allocation for councils



KURT JANSON is policy director of Tourism Alliance

While most people will be vaguely aware of the Formula Grant Distribution System – the system by which the government allocates funding to local authorities in England – very few will have any knowledge of the calculations. Yet it determines how £29bn in public sector expenditure in England – around 25 per cent of total expenditure – is allocated.

Part of the allocation through the system aims to compensate councils for additional costs incurred as a result of people visiting their areas, such as the maintenance of the public realm.

The Department for Communities and Local Government (DCLG), currently uses the *Day Visitor Survey* to calculate the number of visitors to each area and decide the allocation accordingly.

However, the *Day Visitor Survey* is the least accurate of the tourism surveys and DCLG is now planning to use *International Passenger Survey* figures to determine tourism-related funding allocation in future.

However, this change would see the funding allocation to London councils increase by £61m, while the amount allocated to councils in the rest of England would decrease by the same amount – hardly an equitable outcome.

Yet the solution is a simple one. VisitEngland are redeveloping the *Day Visitor Survey* and the first results will be available in 2012. Holding off changing the formula until the results of the new survey are known will ensure that the allocation of funding will be both accurate and equitable.

leisure property news

Visit leisureproperty.com for the latest news on Properties, developments, tenders and investment.

IN BRIEF

Consultation to explore Herne Bay plans

► Canterbury City Council (CCC) has unveiled a six-week consultation to allow local residents to comment on a draft masterplan for the regeneration of Herne Bay. The council is working with Coplan and Denne to transform the area, which will see a new hotel built in the centre of the town. The plans will be on display at Christ Church in William Street until 25 September, while copies of the proposals are available at the CCC office and Herne Bay library.

NI community centre contractor named

► Banbridge District Council has chosen Newry-based company Felix O'Hare to deliver a new £2m community centre in Gilford, County Armagh. The proposed new Stramore Park facility will boast a multi-purpose, four-court sports hall designed to accommodate a range of indoor sports, as well as a fitness suite and meeting rooms. It is hoped the centre, which is due to open in September 2011, will act as a hub for sports and arts activities.

Bank safeguards Bournemouth interest

► Jon Gershinson and Louisa Brooks of consultancy Allsop have been named as receivers to Sheridan Millennium, which currently holds the lease to the IMAX in Bournemouth. Sheridan Millennium's lender called in Gershinson and Brooks over outstanding rent and service charges. Bournemouth Borough Council, which aims to transform the venue into a new tourist destination, confirmed the move would not affect its development.

Walthamstow Stadium offer rejected

Businessman's bid for historic greyhound racing venue dismissed by owners L&Q

By **Pete Hayman**

A multi-million pound bid to acquire London's historic Walthamstow Stadium as part of efforts to return greyhound racing to the venue has been turned down by owners London and Quadrant (L&Q).

Bob Morton, a businessman and honorary president of the Greyhound Owners, Breeders and Trainers Association, is reported to have bid between £8-9m for the stadium.

However, L&Q told the *Waltham Forest Guardian* that Morton's bid failed to meet the "current market valuation and potential of the site".

L&Q is planning to transform the Walthamstow Stadium site with an affordable housing project, but has now come under fire from the campaign



Walthamstow's iconic greyhound racing track shut in August 2008

group Save Our Stow, MPs and local councillors for rejecting Morton's bid outright.

Local MPs Iain Duncan Smith and Stella Creasy said: We are very disappointed that L&Q has rejected Bob Morton's offer without meeting him beforehand. L&Q now need to answer some very serious questions."

Matt Davis, leader of the Conservative group at the London Borough of Waltham Forest, added: "We very strongly urge L&Q to reconsider their hasty and ill judged rejection of Bob Morton's offer and to do the right thing for Waltham Forest and work with him to achieve a deal."

EU funding for Bridgend project

Plans for a multi-million pound regeneration of Bridgend have been given a boost after the Welsh Assembly Government confirmed more than £7.7m towards the scheme.

Funding has come from the Convergence European Regional Development and the Targeted Match Fund and will complement local authority and Heritage Lottery Fund support.

It is hoped the project will increase commercial confidence in the area and improve pedestrian safety.

GBC to consider Gravesend plans

By **Pete Hayman**

Gravesend Borough Council (GBC) has announced that plans for the creation of a new £120m Heritage Quarter in Gravesend, Kent, will be considered by its regulatory board on 20 September.

London-based property group Edinburgh House is working in partnership with the local authority on the development, which is to be carried out in two stages and initially went before planners in April before being deferred.

The proposed Heritage Quarter will boast more than 20,000sq ft (1,858sq m) of

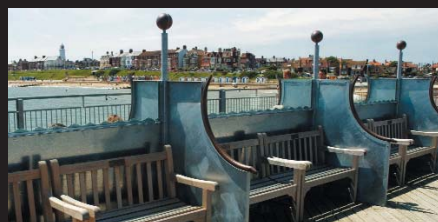


A town square will be created

restaurants and leisure facilities; a hotel; a town square; and a children's play area.

New and enhanced St Andrews Gardens; retail units and housing also form part of the scheme, with the first phase to be completed in mid-2012.

SOUTHWOLD PIER, SUFFOLK



- + Iconic pier business on Heritage Coast
- + Multiple revenue streams
- + Extensively refurbished by current owners
- + Detailed PP for 30-bedroom boutique hotel
- + Highly profitable. Sales £2.7m exc VAT

£6,000,000 Freehold

Ref 14/LP46576/1937

For further information, please contact:

Tim Gooding, Ipswich Office

T: 01473 256588

E: tim.gooding@christie.com

Jonathan Parrish, London Office

T: 020 7227 0700

E: jonathan.parrish@christie.com

Christie + Co
BUSINESS INTELLIGENCE

AGENCY | VALUATION SERVICES | INVESTMENT | CONSULTANCY

www.christie.com

Borough of Poole



HERITAGE & LEISURE BUSINESS OPPORTUNITY IN POOLE, DORSET

The Borough of Poole invite initial expressions of interest for the day to day running and improvement of Upton Country Park in Poole.

Have you an exemplary track record managing heritage and leisure attractions? Can you maximise income whilst meeting local needs, expectations and aspirations? Are you interested in expanding your activities in the world class environment of Poole Harbour?

If the answer to these questions are 'yes' then read on. Upton Country Park is situated by Poole Harbour. Currently managed by the Council's Leisure Services the site includes a Grade II* Listed House with courtyard tea rooms, 98 acres of formal and semi natural green space with Green Flag status. Upton Farm is 154 acres currently managed for livestock under a separate tenancy. The Council seeks an exemplary provider or consortium to secure a long term future for the facility whilst providing affordable and accessible public green space and an exemplary heritage and leisure facility.

Experienced providers are invited to a market sounding day on 4 October 2010 to hear more about the potential opportunities this site offers including tours and an opportunity for questions and answers with relevant Council officers. The Borough of Poole has no intention of selling the land or buildings, but welcomes expressions that outline all or part management of the facility. This 'market sounding' is not a competition and does not constitute part of any tendering process. Nor is it a public consultation – there will be active consultation at a later date.

For an information pack contact: Trudy Hicken, Leisure Services, Borough of Poole, Northmead House, 30-32 Northmead Drive, Creekmoor, Poole, Dorset, BH17 7RP or by e-mail at t.hicken@poole.gov.uk.

The deadline for registering your interest in attending the Market Sounding Day is 24th September 2010, using the RSVP in the information pack. Places are limited. Deadline for initial responses using the template provided to be received by 15 October 2010.

FOR SALE FREEHOLD

RECENTLY REFURBISHED TWO STOREY NIGHTCLUB AND BAR

184 and 188 LONDON ROAD KINGSTON
UPON THAMES KT2 6QW

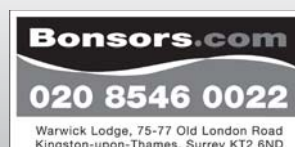
Approx 4375 sqft (406.45 sqm) total gross
internal floor area

Licensed for

Sale of Alcohol: Mon-Sat (inc Bank Holidays)
10.00am to 2.00am, Sunday Noon to 12.30am.

Live Music and Dance: Mon-Thurs 10.00am to
2.00am, Friday 10.00am to 3.00am, Saturday
12.00am to 1.00am.

**For further information contact:-
Andrew Pollard or Tim Gauld at**



Hospitality & Leisure

Specialist Property Services

**Valuations, Sales, Aquisitions,
Rent Reviews, Expert Witness.**

Contact: Colin White
colin.white@edwardsymmons.com

London • Bristol • Leeds • Liverpool • Manchester • Plymouth • Southampton

**Edward
Symmons**

020 7344 4500

www.edwardsymmons.com

UK and international
property experts
covering all sectors of the
leisure and hotel industry

Alan Plumb
+44 (0) 1865 269000
aplumb@savills.com
savills.co.uk/leisure

savills
savills.com

Rating • Planning & Site Licensing

**CHARLES
F. JONES & Son** LLP
CHARTERED SURVEYORS

**Leading Professional Advisors
to the Leisure Industry
for over 70 years**

Charles F Jones & Son LLP

01244 328141 www.cfj.co.uk

16 Grosvenor Court Foregate Street Chester CH1 1HN

Valuations • Sales & Acquisitions

HL HUMBERTS LEISURE

specialist professional
leisure property expertise

- Sales
- Rent reviews
- Lease renewals
- Consultancy
- Planning
- Arbitrations
- Expert witness
- Viability & feasibility
- Purchases
- Rating
- Valuations
- Funding

London +44 (0)20 7629 6700 South +44 (0)1962 835 960
North +44 (0)1756 799 271 South East +44 (0)1273 325 911
South West & Wales +44 (0)29 2022 6892

www.humberts-leisure.com

Fortnightly leisure
recruitment, training,
property and news
publication which
gets you the right
job or the perfect
candidate for
your vacancy



subscribe online:
www.leisuresubs.com

**To book your
advertisement in the
Leisure Opportunities
Property Directory
call Simon Hinksman on
+44 (0)1462 471747**

Forthcoming LPF events



Autumn 2010 Schedule

Make a note in your diaries for our
autumn schedule of forthcoming events.
These are as follows:

THE GAMING INDUSTRY - what does the future hold?

Thursday 21 September 2010

THE PUB MARKET IN 2010 - as seen from a regional brewers perspective

Thursday 28 September 2010

WHEN HEALTHCARE MEETS HEALTH & FITNESS

Tuesday 12 October 2010
PLEASE NOTE THIS IS A CHANGE OF DATE

CHILDREN'S ENTERTAINMENT CENTRES - the latest developments in the CEC industry

Wednesday 10 November 2010

HOTELS IN 2010 - what are the successes?

Tuesday 30 November 2010

TO BOOK OR FOR MORE INFORMATION CONTACT:

Michael Emmerson, LPF Administration
E: info@leisurepropertyforum.org
T: 01462 471932 F: 01462 433909
W: www.leisurepropertyforum.org

**RESTRICTED
NUMBERS**
BOOK EARLY TO AVOID
DISAPPOINTMENT



IMAGE: TIR COED

Branching Out/Egin participants at Castle Woods, Carmarthenshire

New woodland scheme launches

FCW to co-fund new skills development programme

By **Pete Hayman**

Young people in mid-Wales are to be given the opportunity to develop countryside and land management skills as part of a project co-funded by Forestry Commission Wales (FCW).

The Branching Out/Egin initiative is to be delivered by Tir Coed, a charity set up in 1999 by a group of countryside groups to advocate the benefits of woodland areas in Wales.

Disadvantaged young people between the ages of 16 and 25 years old will have the chance to work at local nature reserves and community woodlands.

Taking first thinings, fencing, ditching and the maintenance of footpaths are among skills that can be learned, as well as installing bridges, boardwalks and other visitor facilities.

FCW's Woodlands for People policy advisor, Roz Owen, said: "Wales' woodlands offer a stimulating outdoor learning environment for people to develop practical new skills."

The programme is expected to benefit 120 people between 2010 and 2013, while Tir Coed is looking to expand the initiative to the Heads of the Valleys Strategic Regeneration Area in the coming months.

Time to celebrate the industry's talent!

The Springboard Awards for Excellence aim to reward inspiring people and organisations

With a decade of sporting events fast approaching, and the UK being the host of so many fantastic events, there is no time like the present to celebrate the nation's achievements in the leisure industry.

Springboard does this by organising a night dedicated to rewarding talent in the leisure, hospitality and tourism sector – the Springboard Awards for Excellence, now in its eighth year.

This year's awards are due to take place in November and will celebrate the inspiring people, organisations and initiatives that have been working hard to raise the profile of the industry as an employer that is helping to attract and retain the best talent.

Speaking about the success of the Springboard Awards for Excellence 2009, Anne Pierce, chief executive of The Springboard Charity and Springboard UK, said: "The awards truly celebrate achievement in the industry. The outstanding people in our businesses, the teams that drive our strategies forward, the individuals who delight customers daily, the companies that champion innovation and progression – all make the hospitality, leisure, and tourism industry thrive.

"The number and quality of award entries this year has been incredible and all of our winners and short-listed candidates should be hugely proud of their achievements."

To ensure that this year's awards outshine last year's, we are looking for even more support. If you believe you have performed exceptionally well and have tangible results that will impress the judges, why not apply for the 2010 awards? The benefits from these awards are exceptional and will certainly provide a confidence boost.

Red Carnation Hotels won the Best Employer Award for Hospitality and Leisure in 2009. Liz McGivern, the company's director of human resources and training, said: "We are so proud of our Springboard Award for Excellence. We display the award and mention it on our collateral and website and I have to say that people do ask what we won the award for.

"Anything that helps you attract the best people to your organisation has to be a bonus and I know that when I explain what we won the award for, people have been interested and impressed. It has helped us to showcase our achievements and helped put us on the map!"

For further information about the awards, log on to the Springboard website at www.events.springboarduk.net/awards



Springboard

SAM COULSTOCK is
customer relation-
ship director at
Springboard UK

Coca-Cola reveals swimming plans

Coca-Cola Great Britain has revealed plans to get 22,000 more people swimming as part of a bid to increase participation in sport ahead of the London Olympics.

The drinks group is supporting the training and development of more than 120 new coaches and teachers after making a £50,000 contribution to the Swimming Trust.

The funding will be used for a Teacher Coach Education Grant Fund, which will provide training opportunities for volunteers at diving, swimming and watersports clubs across the country.

It follows the Schweppes Abbey Well 'Schwim Free' campaign, allowing consumers to swap bottle tops for free swims. In the first year, 47,000 free swims were taken.

Love Pilates?

Whatever your background you could turn your love for Pilates into a new and rewarding career

Non-qualified Pilates enthusiasts

- Train as a fully certified STOTT PILATES® matwork instructor
- Full support every step of the way

Qualified fitness & health professionals

- Train as a fully certified STOTT PILATES® matwork or reformer instructor
- Qualification at Level 3 through CYQ (optional)
- Earn 16 REPs points per course

STOTT PILATES®
merithewcorporation

0800 434 6110
www.activetraining.info

*Registered trademark of Merithew Corporation, used under license. STOTT PILATES® photography © Merithew Corporation.

L3 Exercise Movement and Dance Teacher Qualification

Turn passion in to a career

Courses throughout the UK

Call: 01403 266000
Email: training@emdp.org
Or go online
www.emdp.org/teacher-training

emdp **Fitness League** **medau** **kta** **GO** **REPs**

Loughborough COLLEGE est. 1909

Are you in the running for a career in Leisure Management?

Loughborough College offers courses in Leisure, Sport, Event and Recreation Management to help you start your career, or develop your skills and managerial expertise from an existing position in the leisure industry.

Study full time, day release, block release or by distance learning, at a variety of levels; from the ISRM Fitness Management Certificate and Higher National Diploma to full Honours Degree. The Foundation Degree and Higher Professional Diploma are fully accredited by the ISRM, and lead to use of the designatory letters M.Inst.SRM.

Recruiting now for a September 2010 start.

Visit www.loucoll.ac.uk
or call 0845 166 2950
for more information

Leisure Opportunities

training DIRECTORY

From just **£534** you can access over **23,000** motivated leisure professionals for 3 months (6 consecutive insertions). Committed to the leisure industry, they are potential students for your courses

TO ADVERTISE
+44 (0)1462 471747
leisureopps@leisuremedia.com

Focus Training
Adding value to your staff

As an employer of fitness professionals, you'll recognise the value of investment in training them to ensure they deliver the best possible service to your membership.

Fantastic professional courses available in:

- Personal Training
- Exercise to Music
- Gym Instructor
- Step
- Studio Cycling
- Nutrition & Weight Management
- GP Exercise Referral
- And much more.

Call Focus Now:
0333 9000 222
or 01204 388330

FOCUS TRAINING

www.focus-training.com

Become a Personal Trainer

and excel with guaranteed positions for every graduate anywhere throughout the UK

We offer the most comprehensive, practical and PT-specific curriculum, preparing graduates with 15-20 hours of real life experience on-course helping launch a new career with their best foot forward

Choose EIF to start earning sooner

— fully qualified and working in just 6 weeks! Choose EIF and remove the risk from your investment — guaranteed positions for EVERY Master Trainer graduate



take action...

Train like a pro.

Start earning like a pro!

Call **0845 0944 007** and talk to our careers team today — Now offering cashback incentives on every course throughout 2010.

*be*more

Why not take control of your HSE First Aid needs?

The Five-Day First Aid Instructor Course

Includes the PTTLS Level 3 Training Qualification

Nuco Training Ltd

08456 444 999

enquiries@nucotraining.com
www.nucotraining.com
www.nucoplus.com

"...I found the Instructor Course to be excellent and a credit to your company..."
Debbie Hull (Bishops Stortford)



FOR ALL YOUR FIRST AID NEEDS



The best personal trainers don't happen by accident

We deliberately train them that way

CALL FASTER ON
08455 19 16 15
or visit www.fasterglobal.com
if you want to learn to be the best personal trainer

Chronic Respiratory Disease Exercise Instructor Course

BLF bursaries are now available for the September 2010 intake of this innovative distance learning course.

Developed by Loughborough College, the University Hospitals of Leicester and the British Lung Foundation (BLF), with funding and input from Rotherham PCT, the course has been submitted for endorsement at level 4 on the Register of Exercise Professionals. It covers:

- Physiology and pathology of respiratory disease
- Management of chronic respiratory disease
- Responses to exercise and exercise prescription
- Managing breathlessness
- Referral pathways

The BLF bursary, funded by Air Products, is available to exercise professionals who meet the following entry requirements:

- Level 3 or equivalent qualification as recognised by REP's
- A current valid first aid certificate
- Endorsement from a local pulmonary rehabilitation team
- 100 hours practical exercise instruction over the past year, with some experience of working with clients with COPD/respiratory disease
- Current CRB disclosure form

Instructors taking up a bursary will be expected to work with local Breathe Easy support groups to set up exercise classes within the community.

For more details or an application pack please log on to www.lunguk.org/supporting-you/blf_active or contact Danielle Smreczak using the details below

e: exercise@blf-uk.org

t: 0207 688 5618

w: www.lunguk.org



Loughborough College



University Hospitals of Leicester
NHS Trust
Rotherham
Primary Care Trust

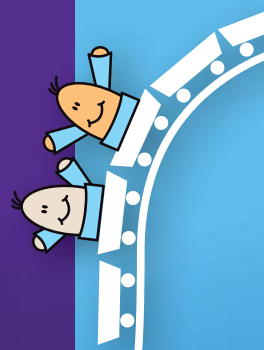


the freshest ideas and the latest lines in leisure

Visit



21-23 Sept 2010
NEC Birmingham



LEISURE INDUSTRY WEEK 21-23 September 2010 · NEC Birmingham

LIW is the UK's leading and most influential trade show for out of home leisure businesses, with over 350 exhibitors displaying the latest products and services across seven of the leisure industries sectors.

Each sector is tailored to the specific needs of the communities we serve and offers comprehensive educational seminars and features.

Play & Attractions · Licensed Business · Eat & Drink · Leisure Facilities · Sport · Pool & Spa · Health & Fitness

To find the solutions to your business needs, connect with your industry colleagues, benefit from the education and best practice discussions and demonstrations.

Register for FREE fast entry to LIW 2010 today at www.liw.co.uk/register



Regional Manager South West

**BADMINTON
ENGLAND**
Play it. Love it. Live it.

BADMINTON England's regional teams are crucial to the delivery of our strategic objectives. As Regional Manager you will lead a team of Regional Officers and manage the business of badminton in the region. You will ensure that the team are appropriately skilled, motivated and appraised, whilst ensuring that badminton maintains its profile.

Key responsibilities include:

- Leading the Regional Team to deliver BADMINTON England's strategic aims
- Leading the delivery of Community Badminton Networks as specified in the regional plan to ensure increased participation for adults and juniors
- Leading the delivery of Performance Centres as specified in the regional plan to ensure effective player pathways in the counties
- Engaging with key volunteers and partner organisations at local and regional level
- Undertaking a national remit

This is an exciting and challenging role, requiring the successful candidate to demonstrate:

- Strong leadership skills that will enable the team to deliver excellent results
- The ability to form partnerships and to influence decision-makers within the badminton environment and the wider sports development sector.
- The ability to manage a range of tasks and projects concurrently to deliver against organisational objectives
- An understanding of the needs of sports participants and the people who deliver sport

Salary is at Grade 5 (from £30,000 pa) plus company car and contributory pension. Office location is at the South West regional office at Exeter University.

To apply please contact enquiries@badmintonengland.co.uk or telephone 01908 268400 for an application pack. For more information about the role please contact Vicky Foster-Lloyd on 07825 302460 or at VickyFoster@badmintonengland.co.uk

Applications must be received by 30th September. Interviews for the role will take place w/c 18th October 2010.

GENERAL MANAGER Richmondshire Leisure Trust

SALARY RANGE £24500 to £27000

Richmondshire Leisure Trust provides sporting and leisure activities for the people of and visitors to Richmondshire in North Yorkshire, an area of outstanding natural beauty.

The job entails the management of staff and facilities at Richmond Swimming Pool and dryside facilities at Richmond School. Marketing and Sports Development are also key aspects of the job. It is an exciting and challenging time to join the trust as various new ventures are under consideration and the job holder will make a key contribution.

Candidates, preferably graduate level, should be outstanding communicators, both verbal and written with at least 3 years management experience in leisure facilities. NPQL, Pool Plant Operator's Certificate, First Aid at Work and Safety Management qualifications are essential. **Closing Date: 30th September 2010**

Apply in writing enclosing your CV to: The Chairman, Richmondshire Leisure Trust, Richmond Swimming Pool, Old Station Yard, Richmond, North Yorkshire DL10 4LD or email to margaret@rltrust.org.uk



Required asap

SPORTS COMPLEX MANAGER

£19,126 - £22,221 and

DEPUTY MANAGER £16,830 - £19,126

37 hours per week

SPORTS COMPLEX ASSISTANTS

One full time post and two part time -

£15,444 - £16,830 equivalent.

Our brand new community facilities will be opening to public membership in the autumn term, and we need to appoint colleagues with initiative, vision and enthusiasm to manage, oversee and operate the new Sports Complex, in particular our state of the art public gym facility, the LA3 Fitness Suite.

These exciting new posts mean that you will be in a position to shape the running of the complex and create the systems and processes that will ensure our community customers receive an excellent level of service in a first class environment.

Sound exciting? We think so. This is a totally new venture for us, and is an opportunity for the right candidates to mould a working system from scratch and show the flair and motivation needed to build up a client database and maintain it into the future.

If you are ready for the challenge, we are waiting to hear from you.

Application forms and further details can be downloaded at www.heysham.lancs.sch.uk/vacancies

Please email forms to Janice Coltman, Director of Personnel on j.coltman@heysham.lancs.sch.uk

Closing date for applications is 17th September 2010

Heysham High School is committed to safeguarding and promoting the welfare of children and young people and expects all staff and volunteers to share this commitment. The successful candidate must be prepared to undergo Criminal Records Bureau clearance.



Limes Avenue, Morecambe,
Lancs. LA3 1HS
Tel: 01524 416830
Fax: 01524 832622



www.leisureopportunities.co.uk
leisureopportunities

news & jobs updated daily online

YOUR 1ST CHOICE FOR RECRUITMENT & TRAINING

NEXT ISSUE:

21 SEPTEMBER

BOOK BY NOON ON

WEDS 15 SEPTEMBER 2010



**TO ADVERTISE, Contact the
Leisure Opportunities team on
t: +44 (0)1462 431385
e: leisureopps@leisuremedia.com**

2 x Field Sales Managers

North and South

Full-time Position

Salary – based on experience



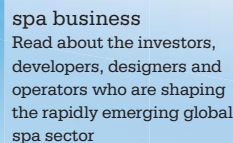
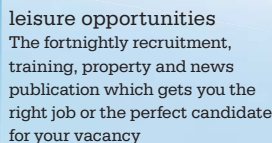
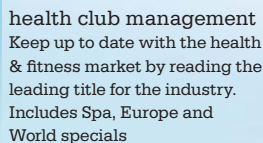
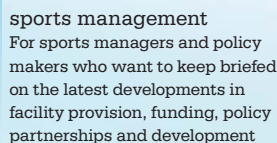
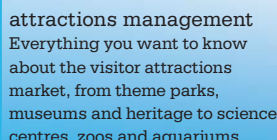
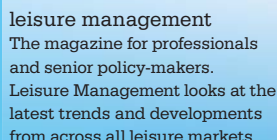
Due to the increasing levels of business now being entrusted to the STA, we need to strengthen our business development team and are looking to recruit additional field sales managers both for the North and South.

Relevant industry experience is required for these roles, together with the ability to negotiate at a senior level. The successful candidates will have excellent communication skills, an outgoing personality and be able to work both on their own and as part of a team. Both roles are full-time positions.

To apply, please email your application and CV to bdt@sta.co.uk

STA is one of the world's largest swim teaching and lifesaving organisations, and continues to experience unprecedented growth and development.

Our publications feature up to the minute news, profiles, interviews and reports, plus the latest industry opinions and issues debated as they happen – in every sector of the leisure industry



Alternatively call our subline +44 (0)1462 471915 or fill out the form below and fax back to +44 (0)1462 433909

Attractions Management	Leisure Management	Health Club Management	Spa Business	Sports Management	Leisure Opportunities
UK £34, EU £45, Int £65, Student £17	UK £38, EU £49, Int £69, Student £19	UK £41, EU £52, Int £73, Student £20	UK £28, EU £38, Int £38, US/Canada £28 Student £18	UK £27, EU £37, Int £58, Student £13	Standalone subscription: UK £31 EU £41, Int £62, Student £16
*Add Leisure Opportunities for £10 (UK only)	*Add Leisure Opportunities for £10 (UK only)	*Add Leisure Opportunities for £10 (UK only)	*Add Leisure Opportunities for £10 (UK only)	*Add Leisure Opportunities for £10 (UK only)	

☐ **Cheque** (in £ sterling – please make payable to the Leisure Media Company Limited and post to the following address: Subscriptions, The Leisure Media Company Limited, Portmill House, Portmill Lane, Hitchin, Herts SG5 1DJ)

Tel: _____ Fax: _____ Email: _____

leisure opportunities joblink

Book a joblink with us and we'll put your logo and company name on every page of the Leisure Opportunities website
www.leisureopportunities.co.uk

This advert will have a hyperlink to your website, where you can list all the job vacancies in your company.



Go to **www.leisureopportunities.co.uk** and click on the link to see the latest jobs from...



TO BOOK Call: +44 1462 471747
and start getting applications for your jobs IMMEDIATELY!

EXMOOR AREA MANAGER



The South West's largest conservation and recreation charity welcomes around 2m visits annually to over fifty inland waters. We are seeking an experienced individual with a broad understanding of the leisure industry and the environment to manage our sites on Exmoor.

This challenging role will require a customer-focussed candidate with good management and organisational skills to lead a team based at Wimbleball Lake. Overseeing and developing our successful watersports, hospitality and public access activities you will also ensure that the estate and buildings are managed to a high standard and that a balance between conservation and leisure is maintained.

Two bedroom house on site may be available to rent by separate negotiation.

Closing date: Monday 20 September 2010 - 12.00pm

Salary band: £23,000-£26,000

For an informal discussion contact **Andrew Parsons** on 01566 771930. To request an application form contact **info@swlakestrust.org.uk**, call 01566 771930 or visit our website **www.swlakestrust.org.uk/vacancies/current-vacancies**

Displays & Maintenance Manager



Cumbria, The Lake District

£19,000 (full time, permanent)

Lakes Aquarium

Situated on the southern shores of Lake Windermere, the Lakes Aquarium in Cumbria is seeking an enthusiastic and pro-active Displays & Maintenance Manager to join the team.

Responsible for the development, production and maintenance of all displays, ensuring the highest standards of animal welfare and husbandry at all times. The role also includes management of the education and maintenance teams.

The chosen applicant will have experience of working with a wide variety of creatures including marine and freshwater fish, mammals and reptiles. A proven track record in the aquarium industry is essential along with an organised, structured approach and can-do attitude. Relevant qualifications and project management experience are an advantage.

To apply please send a CV and covering letter outlining relevant experience to: **Charlotte Brown, Lakes Aquarium, Lakeside, Newby Bridge, Cumbria LA12 8AS** or by email to **charlotte.brown@realive.co.uk**. More information and job description available upon request - Tel: 015395 30153.

Deadline for applications Tuesday 21st September 2010.

LEISURE/RETAIL/HOTEL/ CATERING BACKGROUND?

NATIONWIDE OPPORTUNITIES

Due to continued expansion, exceptional opportunities have arisen to join a Major National Organisation within the Leisure Industry, which has built its success on a reputation for high standards of presentation, superb customer care and value for money. They now wish to make the following key appointments.

MANAGERS: UP TO £25K
SUPERVISORS: £16K - £18K

Prime responsibilities will be to manage a team within one of our client's outlets, with specific accountability for ensuring the compliance of company operating standards, and that budgeted targets are achieved.

Ideal candidates should possess sound supervisory/management experience gained within a Leisure, Major Retailer, Hotel or Catering environment, with the ability to motivate a team to secure personal and business objectives.

If you are seeking a challenging and rewarding role where you can make a significant contribution to a very well established business please email your CV clearly stating position of interest to: **consultant@landersrecruitment.co.uk**

Landers Recruitment Ltd, 522 Blackburn Road, Bolton, BL1 8NW
Tel: 01204 309555 (24 hrs)

www.landersonline.co.uk



Applications will only be considered from our retained consultants.

visit www.leisureopportunities.co.uk
or call **01462 471747** for more details
on the following jobs

**UPDATED
DAILY**

Sports Projects Coordinator

Company: Sportessex
Salary: £22,221-£28,638 per annum
Location: Chelmsford, United Kingdom
Closing date: 10 Sep 2010

Leisure Project Manager

Company: Hertsmere Borough Council
Salary: circa £50,000 p.a. pro rata
Location: Borehamwood, United Kingdom
Closing date: 10 Sep 2010

Leisure Project Manager

Company: Hertsmere Borough Council
Salary: circa £50,000 p.a. pro rata
Location: Borehamwood, United Kingdom
Closing date: 10 Sep 2010

Marketing and Commercial Projects Co-ordinator

Company: Sportessex
Salary: £22,221-£28,638 per annum
Location: Chelmsford, United Kingdom
Closing date: 10 Sep 2010

Head of Group Marketing and Communications

Company: Skills Active Group
Salary: £60,000 plus benefits
Location: Central London, United Kingdom

Senior Business Development Manager

Company: Skills Active Group
Salary: £42,000 plus benefits
Location: Central London, United Kingdom

Online Products Manager

Company: Skills Active Group
Salary: £35,000 plus benefits
Location: Central London, United Kingdom

Leisure Supervisor

Company: HOCHTIEF Facility Management
Location: Cheshire, United Kingdom

Personal Trainers

Company: Fitworks
Salary: Potential salary of £20-£30k
Location: Bristol, United Kingdom
Closing date: 15 Sep 2010

Fitness Manager

Company: Parkwood Leisure
Salary: £16,000 - £17,000
Location: Torbay, United Kingdom
Closing date: 15 Sep 2010

Web Manager

Company: Skills Active Group
Salary: £35,000 per annum
Location: London, United Kingdom

GP Exercise Referral

Company: Focus Training
Location: Nationwide, United Kingdom

Become an Exercise to Music Instructor

Company: Focus Training
Location: Nationwide, United Kingdom

Become a Gym Instructor

Company: Focus Training
Location: Nationwide, United Kingdom

Recreation Health and Safety Officer

Company: Leisureforce
Salary: £2,500 to £3,000/mth
Location: Jeddah, Saudi Arabia (Red Sea)

Partnership Development Manager

Company: Baysgarth School
Salary: £33,500
Location: Barton, United Kingdom
Closing date: 17 Sep 2010

National Athletics Development Officer.

Company: CP Sport England & Wales
Salary: £27,000 - £29,000
Location: Nationwide, UK
Closing date: 17 Sep 2010

Duty Manager

Company: Parkwood Leisure
Salary: £15,800 - £16,500
Location: Buckinghamshire, United Kingdom
Closing date: 19 Sep 2010

National Business Development Manager

Company: National Skills Academy for Sport and Active Leisure
Salary: £35,000 per annum
Location: Central London, United Kingdom
Closing date: 20 Sep 2010

Become a Master Trainer

Company: Premier Training International Ltd
Location: Nationwide, United Kingdom
Closing date: 30 Sep 2010



Become a Sports Massage Therapist

Company: Premier Training International Ltd
Location: Nationwide, United Kingdom
Closing date: 30 Sep 2010

Become a Nutritional Therapist

Company: Premier Training International Ltd
Location: Nationwide, United Kingdom
Closing date: 30 Sep 2010

Become a Personal Trainer

Company: Premier Training International Ltd
Location: Nationwide, United Kingdom
Closing date: 30 Sep 2010

Business Support Executive

Company: Skills Active Group
Salary: £20,000 pro rata
Location: Taunton, Somerset, UK

Become an Advanced Youth Trainer

Company: SHOKK Limited
Location: Nationwide, United Kingdom
Closing date: 13 Oct 2010

Trainee Personal Trainer / Fitness Instructor

Company: The Training Room
Salary: £20K-£30K
Location: Nationwide, United Kingdom
Closing date: 01 Mar 2011

Level 2 Apprenticeships

Company: Parkwood Leisure
Salary: Weekly Wage: £95
Location: Nationwide, United Kingdom
Closing date: 01 Oct 2011

together

HOLMES
PLACE

Holmes Place was founded over 30 years ago in the UK to help people improve the quality of their lives by providing support, education and motivation in the all-important area of lifestyle and wellness. Today Holmes Place is widely considered to be the leading premium health club brand in Continental Europe with 75 clubs across 10 different countries, with over 3,000 employees and inspiring over 250,000 members.

Our vision is to inspire people to live well and we do this by supporting them to Move Well, to Eat Well and to Feel Well. Focusing on the equilibrium of these 3 essential parts of our lives is what makes Holmes Place unique and truly differentiates us from more traditional fitness clubs. The anecdotes and stories of our members over those 30 years have shown that we are still achieving what we set out to do: make a long-lasting difference to people and improve their lifestyles in the healthiest, most natural ways possible.

We are looking for inspirational people who share our vision and are recruiting for the following positions;

**CLUB MANAGER
ASSISTANT CLUB MANAGER
REGIONAL SALES MANAGER
SALES MANAGER EUROPE
GROUP FITNESS MANAGER EUROPE
SALES CONSULTANT**

We offer:

- creative work in a dynamic team ● an attractive salary package
- benefit from being part of a growing international company

**Please email your CV and covering letter to Rene Behr,
HR Director at; Rene.behr@holmesplace.com
www.holmesplace.com**

One life. live it well



Fitness & Quality Manager The Venue, Borehamwood

Reporting to the Centre Manager, you will be responsible for the day to day management of Beaumonts Health Club and the Quality Management System.

This key role will include, amongst other things, deputising for the Centre Manager as and when required, taking responsibility for fitness staff, customer retention, and external / internal audits.

You will have previous management experience in a leisure environment; hold a current First Aid at Work certificate, NPLQ qualification or the ability to gain these once appointed.

The ideal candidate will also have knowledge and experience of the requirements of quality-assured systems including ISO 9001:2008, Quest and health and safety legislation.

This post includes some shifts and weekend working.

Closing date: Monday 20th September 2010

(Previous applicants need not apply)

For an application pack for this position please visit our website www.hertsmerelleisure.co.uk, telephone Hertsmere Leisure on 01727 744250 or email us at recruitment@hertsmerelleisure.co.uk.

This post is exempt from the Rehabilitation of Offenders Act 1974 and will be conditional upon a satisfactory disclosure from the Criminal Records Bureau.

Successful applicants will receive notification of an interview within 3 weeks of the closing date.



*Hertsmere Leisure promotes
a positive attitude towards
attendance at work.*

Registered Charity No.: 1093653.



leisure media
STUDIO

LET US QUOTE YOU

Contact Tim Nash

Tel +44 (0)1462 471917

timnash@leisuremedia.com

Industry-leading marketing and design services

With more than 30 years' experience, **leisure media studio** will work with you to create bespoke print and web solutions to power your marketing

- ▶ Web design
- ▶ Email marketing
- ▶ Contract publishing
- ▶ Graphic design
- ▶ Digital turning pages
- ▶ Image retouching
- ▶ Illustration
- ▶ Advertising design
- ▶ Direct mail
- ▶ Print

news & jobs at www.leisureopportunities.co.uk

London's first Corinthia Hotel set for 2011 launch

Operator to add ninth property to global portfolio with new 294-bedroom hotel on Northumberland Avenue

By **Martin Nash**

Corinthia Hotels' first London hotel – and the world's ninth – is due to open early next year.

Corinthia Hotel London will be housed within an existing Victorian building on Northumberland Avenue between Trafalgar Square and the River Thames and set around an inner foyer and garden.

Facilities will include two restaurants, a luxury spa, a concept cocktail bar, boardroom meeting facilities and a refurbished grand ballroom.

The hotel will boast 294 rooms, including 45 suites. Some of the latter will be on duplex floors, inside historic turrets, and feature private lifts and terraces. The two-bedroom Royal Suite, at more than 470sq m (5,000sq ft), will be one of the largest in the capital.

Interior design is being led by GA Design International, which is also creating the ESPA spa, as well as the suites and one of the two restaurants. Interiors' designer David Collins is creating the bar, Bassoon, and specialty restaurant.



The new Corinthia property will be located near Trafalgar Square

Althorp House set to receive £10m refurbishment

By **Martin Nash**

Althorp House in Northamptonshire, ancestral home of the Spencer family since the early 16th century, is undergoing a £10m facelift.

Building conservation and restoration specialist William Anelay has been awarded the contract to carry out phases of restoration work at the house.

The scheme – due to last around a year – will involve



The project is due to last a year

re-roofing, stonework replacements and extensive refurbishment of the mathematical tiles which face much of the house.

Funding for the work came from a sale of historic family heirlooms held by auctioneers Christies earlier this year, which raised a total of £21.1m.

Home to Charles Spencer, the ninth Earl Spencer, the house is open for two months during the summer, with visitors able to access 19 of its many rooms.

A stable block contains an exhibition reflecting on the life of the late Diana, Princess of Wales, Charles Spencer's sister.

HLF support for theatre revamp

Plans for a £4m development at the New Theatre Royal in Portsmouth have received a first-round pass from the Heritage Lottery Fund (HLF).

The venue is working with the University of Portsmouth on the project and has been given a grant of £63,000 to help progress its bid for a full award worth nearly £1m.

CONTACTS BOOK

Arts & Business +44 (0)20 7378 8143
www.aandb.org.uk

ALVA +44 (0)20 7222 1728
www.alva.org.uk

Arts Council +44 (0)20 7333 0100
www.artscouncil.org.uk

ASVA +44 (0)1786 475152
www.asva.co.uk

BALPPA +44 (0)20 7403 4455
www.balppa.org

BHA +44 (0)845 880 7744
www.bha-online.org.uk

BICM +44 (0)845 217 1811
www.bicm.co.uk

BiSL +44 (0)20 8780 2377
www.bisl.org

CCPR +44 (0)20 7976 3900
www.ccpr.org.uk

CMAE +44 (0)1334 460 850
www.cmaeurope.org

Countryside Agency +44 (0)1242 521381
www.countryside.gov.uk

CPRE +44 (0)20 7981 2800
www.cpre.org.uk

English Heritage +44 (0)870 333 1181
www.english-heritage.org.uk

FSPA +44 (0)2476 414999
www.sportsandplay.com

FIA +44 (0)20 7420 8560
www.fia.org.uk

HHA +44 (0)20 7259 5688
www.hha.org.uk

IAAPA +1 703 836 4800
www.iaapa.org

IEAP +44 (0)1403 265 988
www.ieap.co.uk

Institute of Hospitality
+44 (0)20 8661 4900
www.instituteofhospitality.org.uk

ISPAL +44 (0)845 603 8734
www.ispal.org.uk

LPF +44 (0)1462 471932
www.leisureprop.com

LMCA +44 (0)1278 436910
www.lmca.info

MLA +44 (0)20 7273 1444
www.mla.gov.uk

NPFA +44 (0)20 7833 5360
www.playing-fields.com

People 1st +44 (0)870 060 2550
www.people1st.co.uk

REPs +44 (0)20 8686 6464
www.exerciseregister.org

SAPCA +44 (0)24 7641 6316
www.sapca.org.uk

Sports Aid +44 (0)20 7273 1975
www.sportsaid.org.uk

Sport England +44 (0)8458 508 508
www.sportengland.org

Springboard +44 (0)20 7497 8654
www.springboarduk.org.uk

SkillsActive +44 (0)20 7632 2000
www.skillsactive.com

Tourism Management Institute
+44 (0)1926 641506
www.tmi.org.uk

Tourism Society +44 (0)20 8661 4636
www.tourismsociety.org

VisitBritain +44 (0)20 7578 1000
www.visitbritain.com

World Leisure +1 250 497 6578
www.worldleisure.org