

leisureopportunities

8 FEBRUARY – 21 FEBRUARY 2011 ISSUE 547

Daily news & jobs: www.leisureopportunities.co.uk

OPLC postpones stadium decision

PETE HAYMAN

A decision on the future use of London's Olympic Stadium has been put on hold after the Olympic Park Legacy Company (OPLC) said it needed "more time".

It had been anticipated that the OPLC would recommend its preferred bidder to the government and the mayor of London on 28 January. However, the company said it needed further clarification to secure "the most appropriate solution" for the venue.

West Ham United Football Club is working alongside Newham Council on its bid, as well as Live Nation, Essex County Cricket Club and the University of East London. Meanwhile, Tottenham Hotspur Football Club has partnered with entertainment operator AEG and is aiming to completely redevelop the stadium.



The Olympic Stadium's future post 2012 is no nearer to being resolved

A third option is also being considered by the OPLC, which incorporates initial plans for the redevelopment of the stadium into a 25,000-seat mixed-use athletics venue.



heneghan.peng have designed the £18.5m facility

Work starts on Giant's Causeway visitor centre

PETE HAYMAN

Work has now started on a new £18.5m visitor centre at the Giant's Causeway World Heritage Site in County Antrim.

Gilbert-Ash has been chosen to lead the project, which has been designed by Dublin-based architects heneghan.peng.

McConnell Stone; Metaltech; Mastercraft; Vaughan's; and Hynd's Architectural Systems are also working on the scheme.

Elsewhere, Event Communications has been appointed to develop the interpretive design of the new visitor centre.

1,340 applications for Arts Council funding

PETE HAYMAN

Arts Council England (ACE) has revealed that around 1,340 arts groups have applied for funding as part of its new National portfolio programme.

The application process closed at 10am on 24 January, with the new system due to come into effect from April 2012 to replace the Regularly Funded Organisation system.

All of the funding bids will now be judged against ACE's published criteria and it is anticipated that the funding agency will announce its decisions on 30 March.

Crematorium plans debated by council

PETE HAYMAN

Recycled energy from a crematorium could be used to heat a leisure centre in Redditch, under proposals discussed by the local authority.

Redditch Borough Council's executive committee and full council debated the plans on 1 and 7 February respectively.

In an attempt to reduce carbon dioxide emissions, the council plans to recycle energy that would help heat the newly-redeveloped Abbey Stadium Leisure Centre.

Energy generated from the flue gas cleaning process at the crematorium would heat the majority of the leisure centre site, which would otherwise have been wasted.



Recycled energy could heat the redeveloped complex

A spokesperson for the local authority said: "While remaining respectful of the bereavement process, the plans are supported to help tackle the pressing challenges of CO2 emissions and climatic change."

**GET
LEISURE
OPPS**

Magazine sign up at
leisureopportunities.co.uk/subs

Job board live job updates
leisureopportunities.co.uk

PDF for iPad, Kindle & smart phone
leisureopportunities.co.uk/pdf

Ezine sign up for weekly updates,
leisureopportunities.co.uk/ezine

Online on digital turning pages
leisureopportunities.co.uk/digital

Instant sign up for instant alerts,
leisureopportunities.co.uk/instant

Twitter follow us:
[@leisureoppops](https://twitter.com/leisureoppops) [@leisureoppopsjobs](https://twitter.com/leisureoppopsjobs)

RSS sign up for job & news feeds
leisureopportunities.co.uk/rss

The Leisure Media Company
Portmill House, Portmill Lane,
Hitchin, Herts SG5 1DJ, UK
Tel: +44 (0)1462 431385
Fax: +44 (0)1462 433909
e-mail: please use contacts'
fullname@leisuremedia.com

Subscriptions

Denise Gildea 01462 471930
subs@leisuremedia.com

Editor

Liz Terry 01462 431385

Managing Editor

Tom Walker 01462 471934

Journalists

Pete Hayman 01462 471938

Martin Nash 01462 471933

Design

Ed Gallagher 01905 20198

Internet

Dean Fox 01462 471900

Tim Nash 01462 471917

Sales Team Manager

Annie Lovell 01462 471901

Account Managers

Recruitment, training, tenders
Paul Thorman 01462 471904

Simon Hinksman 01462 471905

Emma Matthews 01462 471907

Sarah Gibbs 01462 471908

Property desk

Simon Hinksman 01462 471905

Spa Opportunities

Emma Matthews 01462 471907

Financial Controller

Sue Davis 01395 519398

Financial Administrator

Denise Gildea 01462 471930

Circulation Manager

Michael Emmerson 01462 471932

Subscribe to Leisure Opportunities,

Online: www.leisuresubs.com

Email: subs@leisuremedia.com

Tel: +44 (0)1462 471913

Annual subscription rates are UK £31,

Europe £41, Rest of world £62, students UK £16.

Leisure Opportunities is published fortnightly by The Leisure Media Company Limited, Portmill House, Portmill Lane, Hitchin, Herts SG5 1DJ, UK and is distributed in the USA by SPP, 75 Aberdeen Road, Emigsville, PA 17318-0437. Periodicals postage paid @ Manchester, PA POSTMASTER Send US address changes to Leisure Opportunities, c/o PO Box 437, Emigsville, PA 17318-0437. The views expressed in print are those of the author and do not necessarily represent those of the publisher The Leisure Media Company Limited. All rights reserved. No part of this publication may be reproduced, stored in a retrieval system or transmitted in any form or by means, electronic, mechanical, photocopying, recorded or otherwise without the prior permission of the copyright holder. Printed by Warners Midland plc.
©The Leisure Media Company Limited 2011
ISSN 0952/8210

SPORT

OPLC in venue operator search

PETE HAYMAN

The Olympic Park Legacy Company (OPLC) has started its search for potential operators to take over the Aquatics Centre and the Multi-Use Games after the 2012 Games.

A formal expression of interest process is now underway to identify potential tenants, which have until 2 March to come forward. The OPLC hopes to appoint an operator for the venues by January 2012, with contracts set to run for ten years.

Due to reopen in mid-2013, the Multi-Use Arena will be capable of providing sport and entertainment events, as well as the potential for a health and fitness centre.

The Zaha Hadid-designed Aquatic Centre is due to reopen in January 2014 and will offer two 50m swimming pools, a diving pool and permanent spectator seating for 2,500.



The Multi-Use Arena will stage handball events during the 2012 Games

Malcolm Ross, the OPLC's executive director of operations and venues, told *Leisure Opportunities* that there were clear aims both of the facilities have to achieve. He said: "Each one of the venues has its own specific objectives, and we will be evaluating the expressions of interest against those criteria."

Buxton pool poised for spring reopening

PETE HAYMAN

A swimming pool in Buxton is to reopen to the public this spring, following the completion of a "much-needed" overhaul of the facility.

High Peak Borough Council (HPBC) and DC Leisure have carried out a £2m revamp of

Buxton Swimming Pool, with the new-look pool and a 150sq m (1,615sq ft) gym to be handed over on 4 and 26 April respectively.

HPBC and DC Leisure will then take up to three weeks to clean the facilities and deal with any remaining issues ahead of its opening.

Green light for DMU leisure centre scheme

PETE HAYMAN

De Montfort University (DMU) has been given the green light for a multi-million pound leisure centre development in Leicester.

Leicester City Council granted planning permission for the scheme on 18 January, having already agreed to sell land off Duns Lane to the institution in August 2009.

The S&P Architects-designed complex will feature a 25m, six-lane swimming pool; a gym and studio; an eight-court sports hall; and a climbing wall. A sauna; a café; and ancillary, changing and reception facilities are also proposed as part of the new two-storey development, which it is anticipated will be available for public use.



S&P Architects are behind the design of the multi-million pound facility

A council report put before planners said "the proposal would deliver a quality building in a prominent location, contributing to the regeneration of the area".

FA reveals youth review findings

PETE HAYMAN

Recommendations to improve the development of young football players have been unveiled following an extensive review carried out by the Football Association (FA).

FA director of football development Sir Trevor Brooking identified 25 measures in order to help improve the sport from grassroots level to the Club England set-up.

A reform of the way that youth football is delivered in England has been placed at the centre of the proposals, while another major theme focuses on coach development. The FA is proposing to invest in the education of coaches, which will complement the new St George's Park development near Burton upon Trent, Staffordshire.

FA general secretary Alex Horne said: "The recommendations are fundamental in helping



The FA review aims to help improve the development of young players

us to ensure that we produce more and better English players.

"The FA must ensure that the highest quality coaches are available to the game, and that coaches are trained with the right skills to specifically work with young players at every age across clubs from grassroots to elite level."

February date for Lancashire CCC hearing

PETE HAYMAN

Lancashire County Cricket Club (LCCC) has announced that a legal case designed to halt its multi-million pound overhaul of Old Trafford is to be heard on 28 February.

Derwent Holdings has applied for a judicial review of Trafford Council's decision to back the project, which aims to secure the venue's international cricket status.

LCCC chief executive Jim Cumbes said the verdict would be a "make or break" decision for the club, which has already seen a £2m reduction in grant funding due to the delay.

Cumbes said: "If we cannot bring the ground up to international standard, the North-west will lose Test cricket and the Ashes for good.



LCCC aims to secure Old Trafford's status as an international stadium

"Derwent's action is about securing commercial gain at the expense of the LCCC's sporting legacy for schools, community groups and young people," he added.

Sports minister slams football governance

PETE HAYMAN

Football has been described as the "worst-governed sport in this country" by the minister for sport and the Olympics, Hugh Robertson.

Speaking in response to Parliamentary questions on the matter, Robertson said that "action

is needed" in order to tackle issues surrounding the regulation of the domestic game.

In December, the culture, media and sport select committee launched a probe into how the sport is governed and to identify measures that could help improve the domestic game.

Glasgow 2014 shooting centre gets go ahead

TOM WALKER

A £4.5m project to upgrade the Morton Farm shooting centre in West Lothian to enable it to host events during the 2014 Commonwealth Games has been given the green light by the Scottish Government.

The project is led by sportscotland and the Scottish Target Shooting Federation (STSF) and would lead to a major expansion of the existing clay pigeon shooting site at Morton Farm.

According to STSF, the project will create a "long-lasting legacy" from the Games.



The first funding awards will be revealed in April

Clubs encouraged to bid for Sportmatch funding

PETE HAYMAN

Grassroots sports clubs and voluntary organisations are being encouraged to bid for grants as part of Sport England's Sportmatch programme.

The initiative has been relaunched for 2011-12 and enables not-for-profit groups to bid for between £1,000-£100,000 to match commercial sponsorship.

Clubs, voluntary groups, governing bodies and other organisations are now being invited to submit applications, with the first awards to be announced in early April.

Banstead swimming pool decision deferred

PETE HAYMAN

A decision on plans for a new 'dry-only' leisure centre in Banstead, Surrey, have been deferred by the local authority.

Reigate and Banstead Borough Council's (RBBC) proposals to build a replacement venue for the town without a swimming pool attracted nearly 2,000 objections.

RBBC leader Joan Spiers said: "Given the concerns expressed in the consultation responses regarding Banstead pool, members wish to have more information before taking a final decision.

£5.7m community facility opens in Wolverhampton

PETE HAYMAN

Wolverhampton City Council (WCC) has officially unveiled the new £5.7m Blakenhall Community and Healthy Living Centre.

Funded primarily by All Saints and Blakenhall Community Development, the venue was opened with the help of TV personality Satnam Rana on 17 January.

Facilities include a fitness suite; a young people's gym; and a toning suite. Sunbeam Children's Centre will operate the venue's crèche, while a café is scheduled to open in due course. WCC will manage the centre.



The facility aims to provide a 'focus for education'

Keiser unveils performance training centre in Tetbury

TOM WALKER

The Keiser Performance Training Centre in Tetbury, Gloucestershire, has officially opened to the public.

The new facility, which has been fitted out using the full range of Keiser equipment, is the brainchild of the company's managing director, Tim Colston.

According to Colston, the ambition is for the Performance Training Centre is for it to become a focus for education and testing for personal trainers and strength and conditioning coaches.

Arms-length plans for Highland leisure services

PETE HAYMAN

An arms-length organisation (ALO) could take over the running of Highland Council leisure services under plans being worked up by the local authority.

Sports coaching development, 16 leisure centres, nine swimming pools and nearly 100 community pitches are among the assets and services that could be transferred.

Three art galleries, two museums and 40 libraries could also be operated by an ALO, with the council currently working on a business plan for the proposal.

Lifestyle venues for Cheshire

PETE HAYMAN

Cheshire East Council (CEC) has revealed that new lifestyle centres are to be built in Crewe and Wilmslow as part of efforts to roll out the concept across the region.

The local authority is looking to overhaul the way it delivers health and wellbeing services to residents, with the venues set to accommodate leisure, library and social care facilities. Under CEC's plans, each lifestyle centre will be able to provide activities such as basketball; water aerobics; badminton; PC tuition and tea dances.

The initial two facilities will be followed by two further new-build centres in Congleton and Macclesfield and are designed to reduce health inequalities in Cheshire East.

Andrew Knowles, the council's cabinet member with responsibility for health and



Plans for the lifestyle centres will see a range of services under one roof

wellbeing, said: "This is a bold, ambitious and forward-thinking plan which will bring leisure centres, libraries and some social care services under one roof. With public health responsibilities coming back to local authorities, these hubs will help to prevent long-term illnesses such as heart disease."

Fitness First unveils new Spitalfields club

TOM WALKER

Health club operator Fitness First has unveiled its new £1m club in London's Spitalfields Tower, located in the heart of the city's financial district.

The club – opened on 3 February – will boast 8,000sq ft (743.2sq m) of fitness space with equipment supplied by Technogym and a large exercise studio for group classes.

It will also be one of the first clubs to house Fitness First's new freestyle area concept, allowing members to use a range of equipment – such

as as ViPR, Kettle Bells, TRX Power Bags and Plyometric Platforms – either on their own or with the assistance of a personal trainer.

Fitness First London head of operations Michelle Everett said; "At Spitalfields Tower,



Technogym has supplied equipment to Fitness First's new London club

we will be offering the diversity and innovation to help keep members motivated.

"The new club will provide an innovative place for people from all walks of life to come and workout with like minded people."

£10m earmarked for new Bath leisure centre

PETE HAYMAN

Bath and North East Somerset Council (BANES) has pledged £10m towards the development of a new leisure centre in Bath.

The council anticipates the need for new facilities in light of Bath Rugby's bid to

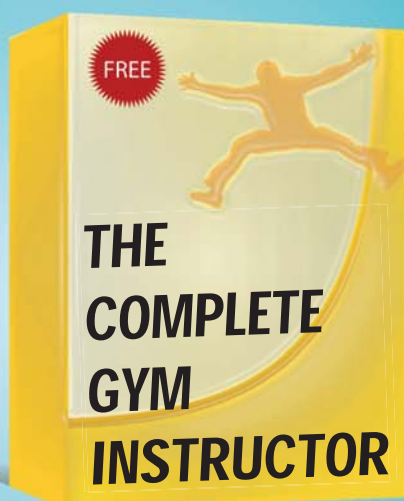
redevelop the Recreation Ground, which will lead to the demolition of the existing centre.

Heads of Terms discussions for commercial arrangements between BANES and the rugby club are at a "well advanced" stage, which has included the council's funding commitment.

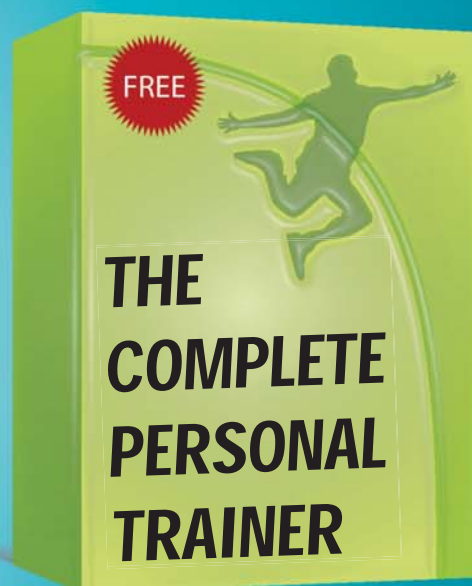
Fast-track training packages available NOW!



Activity Leadership
Leading Health Related
Activity
First Aid



Fitness Instructor
Circuits OR
Fitness for Adolescents OR
First Aid



Personal Trainer
First Aid
REPs Level 3

~~1,000 places available~~

650 places left!

Hurry while stocks last

Subject to eligibility

To take advantage of this amazing offer, please respond immediately by emailing: **fitness@icon-training.com** or call us on: **0844 800 2280**

Calls charged at 5p/min from a BT landline. Mobile and other network costs may vary.

icon-training.com/fitness

£10m cost for Spalding leisure complex scheme

PETE HAYMAN

A South Holland District Council report has revealed the cost of plans to revamp Spalding's Castle Sports Complex.

According to the report, the estimated costs of renovating the complex will come to £7.2m, rising to £10m once "design and client supervision" costs are considered.

Councillors have now agreed to earmark £20,000 to draw up a detailed business case for the scheme, with the proposed design having been guided by a survey carried out on behalf of the council by Leisure-net.



Two facilities have benefited from improvements

King's Lynn leisure centre upgrade work completed

TOM WALKER

The Borough Council of King's Lynn and West Norfolk has completed the upgrading of two of its leisure centres.

The two Bodyworks-branded gyms at the Lynnsport centre and St James Swimming and Fitness Centre have been refitted with equipment supplied by Life Fitness.

The equipment installed utilises the Life Fitness Journey concept and includes the Elevation Series cv equipment with Inspire consoles for iPod connectivity and use of the Life Fitness Virtual Trainer.

FIA confirms support for disability sport initiative

TOM WALKER

The Fitness Industry Association (FIA) has lent its support for Yoodo Sports – a new initiative to help people with disabilities take up and enjoy physical activity.

The scheme, which is the result of a partnership between Leonard Cheshire Disability and Sport England, will pilot in Yorkshire this year and is based on bringing disabled people together with activity 'buddies' – people who may or may not have an impairment themselves but want to help others play sport or be active.

SOLL unveils new Abingdon club

PETE HAYMAN

SOLL Leisure Group has unveiled a new-look fitness facility as part of a £215,000 revamp of The Park Club, a private health club in Abingdon, Oxfordshire.

The 27,000sq ft (2,508sq m) club incorporates a 5,000sq ft (465sq m) gymnasium, which has been fitted with 120 stations supplied by Life Fitness and Matrix Fitness.

XN Leisure is supplying the leisure management system and the Harlands Group has been chosen to provide the membership and the 'Join Online' offer.

Other facilities include a 20m x 8m swimming pool; a sauna and steamroom; a sports injury clinic; and two therapy rooms. The revamp was undertaken following an agreement signed in September, which saw SOLL Vale take on a 22-year lease of the club.



SOLL Vale agreed a deal for a 22-year lease of the venue last September

SOLL Leisure Group managing director Mark Jagers said: "We are very pleased with the successful introduction of the Park Club after a strategic review of the group's operations. I am certain that existing and future members of the club will be delighted with the facilities on offer and the improvements."

Renfrewshire investment plans move forward

PETE HAYMAN

Renfrewshire Council's plans for a multi-million pound investment in local leisure facilities has moved forward.

Two planning applications – for an adult day care centre as part of the £7.1m upgrade of

Paisley's Lagoon Leisure Centre and a £6.3m sports facility at Johnstone High School – have been given the green light.

The facilities will form part of the council's wider £92m investment in schools, community and leisure facilities.

Eze Fitness to operate Scarborough club

TOM WALKER

Health club operator Eze Fitness has acquired a lease for the independently owned Eden Health and Fitness Club in Scarborough, Yorkshire.

The two-storey, 10,500sq ft (975sq m) club was founded and developed by local entrepreneurs, the Millard family, who have now let the property to Eze. Christie + Co acted on behalf of the family.

Eden is the seventh club in the Eze portfolio and the company's first in Yorkshire, joining existing operations in the North West and Northern Ireland. Eze managing director Sean Thornton, said: "We look forward to providing gym goers in and around Scarborough with a high-quality and competitively-priced facility."



Eze has expanded its portfolio to seven sites with the latest acquisition

Thornton added that the company is in the process of looking for additional, similarly-sized clubs to acquire in the UK, as part of its plans to expand its reach.

HAS YOUR CLUB GOT THE FACTOR?



5 REASONS TO SIGN UP!

ATTRACT NEW MEMBERS

ENCOURAGE MEMBER RETENTION

ADD A NEW DIMENSION TO YOUR
LOCAL MARKETING

MOTIVATE YOUR STAFF

FIND OUT WHAT MEMBERS
REALLY THINK

**...AND IT'S FREE
TO ENTER!**

Official Media Partner

health club
management

THE ONLY AWARDS VOTED
FOR BY MEMBERS

**REGISTER
TODAY**

www.healthclubawards.co.uk

ATTRACTIONS & MUSEUMS

Eureka! plans for new gallery a step closer

TOM WALKER

Eureka! The National Children's Museum in Halifax, West Yorkshire has so far secured £2m of a total of £2.9m needed to create its new Me and My World gallery.

Museum officials are hoping to replace the Me and My Body exhibition and open the new gallery in 2012, which will be an educational experience dedicated to science, health and well-being.

Chief executive Leigh-Anne Stradeski said: 'The success in raising funds for a new gallery is heartening for Eureka!'



People will have to pay to visit the Meridian Line

Royal Observatory to charge for Meridian Line

MARTIN NASH

The Royal Observatory in Greenwich, London, has said that it will re-introduce admission charges for part of its site.

From 8 March, visitors will have to pay for access to the Meridian Line courtyard, although tickets will effectively be an annual pass allowing multiple entries. The Astronomy Centre will remain free.

The charge will not only help maintain the fabric of the site, but also fund ongoing developments to all of the Royal Observatory's galleries and facilities.

Drayton Manor unveils new children's coaster for 2011

TOM WALKER

Drayton Manor theme park near Tamworth has revealed details of its new children's coaster called Ben 10 – Ultimate Mission.

Named after the animated TV series, the ride has been designed and built by Dutch manufacturer Vekoma and features an out and back track layout, launching riders forwards on their first tour before returning back along the same route to the station.

The track will be 180m (591ft) in length with a highest point of 20m (66ft) and a maximum speed of 34mph (55 kph).

Lottery funding for Museum@WRI

PETE HAYMAN

Museum@WRI – a new permanent exhibition exploring the history of medicine – is to be created in one of the Worcester Royal Infirmary's former wards.

An extensive collection of medical equipment, documents and uniforms will go on display as part of the exhibition, which is being developed by the University of Worcester and George Marshall Medicine Museum.

Bristol-based Simon Fenn is behind the design of the exhibition, which has been awarded a £537,000 grant by the Heritage Lottery Fund. It will feature 'talking beds' and examples of traditional Victorian wards. George Marshall Medicine Museum will remain open.

The museum's curator, Catriona Smellie, said: 'The exhibition will include a lively



A former ward is to be transformed into the Museum@WRI attraction

interactive area, which will link the history of medicine to contemporary medical issues such as obesity and mental illness.'

Worcester Royal Infirmary is the birthplace of the British Medical Association, which was formed by Sir Charles Hastings in 1832. It now forms part of the university's City Campus.

Three UK heritage schemes to share £7.4m

PETE HAYMAN

Three heritage projects – in Preston, Oxford and Torbay, Devon – have secured a share of Heritage Lottery Fund (HLF) funding worth £7.4m.

Oxford's University Church of St Mary the Virgin has secured £3.4m towards repairs to the façade and interior, along with plans to display the history of the property.

Torre Abbey in Torbay has been handed £2.8m to allow phase two of a restoration project to commence, including the extensive conservation of the medieval ruins.

Elsewhere, the Harris Museum and Art Gallery in Preston has been awarded nearly £1.2m to help fund the development of the attraction's new Guild Gallery.



Torre Abbey has been handed £2.8m towards ongoing restoration work

HLF chief executive Carole Souter said: 'These inspirational and important projects showcase our heritage at its very best, each providing their local communities and visitors with a special look into the past.'

Cash boost for Highlanders' Museum scheme

PETE HAYMAN

Plans to redevelop The Highlanders' Museum, near Inverness, have received £200,000 from Highlands and Islands Enterprise.

Located at Fort George, the attraction explores the history of all army regiments from

the Highlands and Islands from the Battle of Culloden to the present day.

A £3m redevelopment scheme is being proposed for The Highlanders' Museum, which aims to transform the attraction into an interactive learning and education venue.

Arts groups unveil £12m venue

PETE HAYMAN

Work has been completed on a new £12m purpose-built venue in Leeds, which will provide a new home for Northern Ballet and Phoenix Dance Theatre.

Wates Construction built the facility, which has been designed by Strategic Design Alliance – a partnership between Leeds City Council and Jacobs Architecture.

Housing one of the largest dance rehearsal spaces outside London, the new six-storey venue features seven dance studios – including a 230-seat studio theatre featuring work by artist Jo Fairfax. A health suite; wardrobe facilities; office space; and a public exhibition space are also among the building's facilities.

Leeds City Council contributed £6.6m and the site towards the project, with a further £4m



IMAGE: JONATHAN TAYLOR

The £12m complex's entrance features a 20m (66ft)-high glass frontage

provided by Arts Council England. Northern Ballet raised more than £1m.

Northern Ballet's Mark Skipper said: "The fact that we now have our own purpose-built home, more than ten years after setting out to make this vision a reality, is thanks to investment from both public and private sectors."

Fleetwood coastline artwork plans unveiled

PETE HAYMAN

Artist Stephen Broadbent has submitted plans for five coastal sculptures to be erected between the Cleveleys gateway and Fleetwood.

More than 10 pieces of artwork could eventually form part of the Mythic Coastline trail,

which forms part of Wyre Borough Council's £1.6m Sea Change project.

If approved, the trail will boast a 10m (32.8ft)-high beacon featuring two sea swallows. A seashell with a tidal blow hole and a memorial to shipwrecks are also planned.

'Buoyant' year for West End theatres

PETE HAYMAN

London's theatres reported a 1.46 per cent increase in box office revenues last year, according to new figures published by the Society of London Theatres (SOLT).

Compared with figures for 2009, West End shows generated £512m in box office receipts – the seventh successive year of growth. Despite reporting a 0.79 per cent drop in attendances for 2010, theatres still welcomed more than 14 million people to productions including plays, musicals, dance and opera.

Nica Burns, the president of SOLT, said: "Despite economic woes, volcanic ash, and huge transport disruption notably during our busiest time of the year at Christmas, we



IMAGE: SETH ANDERSON

London's theatres posted the seventh successive year of revenue growth

have managed our seventh successive year of growth at the box office. London theatre is something for everyone to be proud of and is a great ambassador for UK plc."

Legacy Trust announces four funding recipients

PETE HAYMAN

Legacy Trust UK has announced the four successful projects that are to receive funding as part of its £3m Community Celebrations programme.

Speed of Light, Scotland; Games Time, East Midlands; Tree of Light, South East England; and Land of Giants, Northern Ireland; have each been awarded grants.

The programme is designed to help communities stage large-scale, outdoor celebrations as part of the Cultural Olympiad and to leave a lasting legacy in each area.



The complex is poised to create hundreds of jobs

First Minister hails Bangor arts complex scheme

PETE HAYMAN

A new £37m arts complex being developed at Bangor University, North Wales, will create "hundreds of jobs", according to First Minister Carwyn Jones.

Jones was speaking at the launch of the Pontio arts and innovation centre, which is to open in spring 2013 and will be used by students and the local community.

Facilities will comprise a theatre with seating capacity of 450-550; a studio theatre; cinema space; and an outdoor amphitheatre, as well as bars and park areas.

Cambridge arts strategy consultation launches

PETE HAYMAN

Cambridge City Council has launched a public consultation to gather views on the first draft of its arts strategy for 2011-14.

Four priority areas have been identified as part of the document, including an increase in access to the arts; the engagement of local communities; and boosting the city's arts reputation.

Efforts to protect the environment through arts is also among the four key targets of the strategy, which has been put to consultation until 11 February.

Right policies needed to remove the barriers



UFI IBRAHIM

is chief executive officer of British Hospitality Association

With one hand, the government is encouraging the tourism industry to grow, yet on the other it has introduced policies which will hold it back.

China, for example, is a massive potential source of visitors for the UK. For a Chinese family wanting to visit Europe, a Schengen Visa can be acquired for ease of entry into the majority of European countries – yet, as the UK is not part of the Schengen Agreement, and a separate visa is required for the UK. Worse still, a separate holiday visa is required for each member of the family, including children, and they each have to obtain a biometric visa making the cost for entry to the UK is considerably higher than one for a Schengen country.

In 2009, the European Tour Operators Association claimed that over 58,000 Chinese visitors were discouraged from visiting the UK because of these regulations. It is anomalies like this that are holding back the growth of tourism to the UK and the creation of new jobs.

There are other government policies which are impacting the industry. For example, almost every country in the EU has a lower rate of VAT for hotel accommodation (and many for meals) than the UK – in France it is 5.5 per cent. The UK suffers from the second highest rate in the EU (only Denmark, at 25 per cent, is higher). This puts us at a huge competitive disadvantage to our closest competitors.

Furthermore, with migration, the government has decided that only graduate level migrants can be accepted – thus effectively barring all the highly skilled chefs that the ethnic restaurant sector so badly needs to maintain standards and to remain a valued attraction for overseas visitors.

In the BHA's report published in October, we said that the hospitality industry could create 236,000 new jobs by 2015 if the right framework is put in place by government. Unfortunately, policies can make or break any objective. With the help of the industry, we will continue to lobby government to ensure that obstacles to growth are removed, so that we can create those 236,000 jobs.

HOTELS

UCL to roll out Lazy Cow brand

TOM WALKER

Urban and Country Leisure (UCL) is to invest more than £20m over the next three years in rolling out The Lazy Cow boutique hotel brand.

The announcement follows a strategic review of the UCL estate, which currently operates fourteen country pub/restaurants across the UK.

UCL is now actively seeking sites in major cities and market towns for the brand. The first Lazy Cow hotel and restaurant opened in November 2010 in Warwick.

UCL is owned by hospitality entrepreneur Ross Sanders, who said the portfolio of boutique hotels will target upmarket visitors looking for destination weekend breaks.

"We hope to establish a chain of small, intimate, stylish boutique hotels that have a strong accent on quality accommodation, stylish



The first 16-bedroom Lazy Cow opened in Warwick in November 2010

interiors with exceptional food and drink offerings," he said.

"It's a natural progression and extension of our existing UCL blueprint and plans, which we have successfully rolled out over the last two years across our estate with our quality pub restaurants."

Blumenthal opens first London restaurant

TOM WALKER

Celebrated chef Heston Blumenthal has opened his first London restaurant at the Mandarin Oriental Hyde Park, London.

The Mandarin Oriental Hotel Group signed a deal with Blumenthal's The Fat Duck Group

last year. The two have worked with designer Adam Tihany to create the 140-cover restaurant, called Dinner by Heston Blumenthal.

Blumenthal said: "Working in partnership with a hotel group is a natural step and one which offers an exciting opportunity."

2010 global hotel sales exceed US\$24bn

PETE HAYMAN

Property transactions that involved hotel real estate totalled US\$24.3bn (£15.1bn) in 2010, according to Jones Lang LaSalle Hotels' *Hotel Investment Outlook*.

The research found that the Americas region saw the most significant increase, driven by real estate investment trusts (REITs) and the acquisition of Extended Stay Hotels. Europe, Middle East and Africa (EMEA) reported a 110 per cent increase in volumes, while Asia Pacific's performance was "more moderated" due in part to fewer distressed sales.

Arthur de Haast, global chief executive officer for Jones Lang LaSalle Hotels, said: "The rebound of operating fundamentals is a



Real estate investment trusts drove sales growth in the Americas region

motivating tonic for both buyers and sellers. We expect volumes to ratchet up another 15-25 per cent in 2011, reaching US\$28-30bn (£17.4-18.6bn) globally."



FitnessBooker is the leading web-based software for all sizes of health club and gym. FitnessBooker will help you increase your average transaction, drive membership, and help your business get healthier and more profitable. Check out FitnessBooker at our website, or call today, and find out how your business could benefit from:



- Membership Management
- Real-Time Online Class Booking
- Sell Membership, PT and Everything Online
- Social Media & Email Marketing
- Integrated Point-of-Sale
- Anywhere, Anytime Access Including Via Mobile Phone
- Integrated Spa Management if Required

FitnessBooker helps businesses all over the world to fulfill their potential.

www.fitness-booker.com

Entering a year of opportunities



JAMES BERRESFORD
is chief executive
of Visit England

The year 2011 brings with it many opportunities for domestic tourism. Spring-time alone promises us a Royal Wedding and a double bank holiday, and if that wasn't enough we have the greatest show on earth, the London 2012 Olympic and Paralympic Games, a Diamond Jubilee and a whole host of major events right around the corner. Marketing England during this time has never been more exciting but – and there's always a 'but' – we, like many other publicly funded bodies, are having to cut our cloth to accommodate the budget reductions.

Naturally, we are looking at ways to supplement our budget and to maximise opportunities for the sector. This is why we have recently submitted a major bid to the Regional Growth Fund, the new £1.4bn, three-year fund that will operate across England to stimulate private sector led sustainable economic growth and employment.

Any budget received from the Regional Growth Fund would be used specifically towards a three year national marketing campaign, in partnership with local areas and the private sector to inspire Brits to take more breaks in England. As you know – tourism creates jobs – fact! We believe that we can help boost local economies with a targeted and inspirational marketing campaign that grows tourism locally and improves the quality of life in our communities throughout the country.

Last year, we launched England's first tourism strategy for 10 years and this remains our blueprint for growth. In the Spring we will be announcing action plans for various areas of the industry including business tourism, sustainable tourism, sea-side tourism and in addition a new national marketing strategy.

The industry maybe facing challenges but our visitor figures are strong, the staycation is certainly standing the test of time and with fabulous new hotels and attractions opening, wonderful festivals and events throughout the year, I for one, think that this really is the time to be in England.

TOURISM

Brits to 'escape' Royal Wedding

TOM WALKER

A report by hotels.com suggests that while the Royal Wedding will attract inbound tourists to the UK, tens of thousands of Britons are planning on taking a foreign holiday during the week.

According to activity on the hotels.com website, visitors from the US seem the keenest to experience the Royal Wedding with searches for London currently up by 189 per cent compared to the same period in 2010. Searches are also up in Japan and France – by 117 per cent and 124 per cent respectively.

But hotel operators in the capital hoping to cash in on the week might lose out on domestic business, as searches for accommodation abroad on hotel.com's UK site for the week ending 29 April are up by 212 per cent compared to last year's bank holiday week.



Inbound and outbound tourism is poised to benefit from the wedding

Alison Couper, global communications director at Hotels.com commented: "The Royal Wedding is a win-win for inbound and outbound tourism, placing London in the spotlight for overseas visitors and Brits able to take advantage of the extra holiday to enjoy a dose of sunshine."

Lincolnshire agency to call in administrators

PETE HAYMAN

Visit Lincolnshire has announced that it will be forced to call in administrators in February if it is unable to source sufficient funding, after Lincolnshire County Council decided to axe future support for the tourism agency.

Interim chief executive Marc Etches said: "As a direct consequence of the loss of public funding – most recently from Lincolnshire County Council – Visit Lincolnshire's Board has made a very difficult decision to begin the process of appointing administrators."

Edinburgh Airport unveils new masterplan

PETE HAYMAN

Edinburgh Airport has unveiled a new masterplan that is designed to help guide the future development of the site over the coming years.

The airport plans to consult with local residents, communities and businesses to ensure its plans help to encourage economic growth in Edinburgh and Scotland as a whole.

Plans for the construction of a additional runway at Edinburgh Airport have been pushed back and will not be considered before 2020, according to the document.

The publication of the masterplan comes as it was revealed that Scottish transport minister Keith Brown will invite airport operators to discuss how to deal with winter weather.



Edinburgh Airport is eyeing up future growth with its new masterplan

Brown has met with Edinburgh Airport managing director Kevin Brown to develop a 'winter resilience action programme', to keep Scottish airports open in times of severe weather.

New spa for Cheshire golf club

TOM WALKER

The independently-owned Mere Golf and Country Club near Knutsford in Cheshire has launched a £4m day spa as part of a £15m rebrand.

The club will be rebranded as simply The Mere and will be marketed as Cheshire's first five-star golf and spa resort.

The Spa at The Mere will incorporate seven treatment rooms, an indoor pool, hammam, rasul, a hydrotherapy area, an aroma steamroom, a caldarium and a salt infusion room. Facilities will also include a health and fitness club and an aerobics studio. Holistic treatments will be supplied by Carita and Aromatherapy Associates and packages include facials, massages, body wraps, hot stones, mud treatments and pedicures.

The spa has been designed by Chris Mather with Alistair Johnson of Spa Creators working



A new £4m day spa has launched at The Mere as part of a £15m overhaul

as a consultant on the development. Marketing agency Wodehouse Direct has been appointed to help with the rebrand.

The opening of the spa is part of a larger, £15m redevelopment of the Mere estate, which will include the launch of a new five-star luxury hotel and three new restaurants.



Business is recovering at top hotels and resorts

Spending up at luxury end of travel sector

TOM WALKER

Global spending in five-star hotels rose by an average of 14 per cent during the year to October 2010 when compared to 2009. The figures from American Express Business Insights suggest that confidence has returned to wealthy consumers.

Sujata Bhatia, vice president of Business Insights at American Express, said increased consumer confidence among wealthy travellers is a positive signal that economic conditions are improving.

"While we've not returned to pre-recession levels, the strong growth in spending in five-star hotels indicates that more affluent consumers and business travellers are regaining confidence," she said.

Pure Health spa launches in St Neots

TOM WALKER

Huntingdonshire District Council has launched a luxury day spa at the St Neots leisure centre in Cambridgeshire.

The Pure Health-branded spa, which cost £0.6m to build and was part of a larger £2.9m redevelopment of the centre, boasts four heat treatment rooms installed by Schletterer; experience showers; salt and citrus steam baths; a herbal sauna; ice fountain and mosaic heated recliners.

Spa treatments are supplied by Decl  r and include

facials, body envelopments and firming, massages, waxing, nail care and tanning.

Heinz Schletterer said: "Today's guests call for high quality standards and are extremely health-conscious."



Treatments at the Pure Health-branded venue are supplied by Decl  r

The St Neots leisure centre and the Pure Health spa will be operated by the council's leisure division, One Leisure. Facilities also include a 120-station Impressions-branded fitness club equipped by Technogym.

Wahanda launches real time spa bookings

TOM WALKER

Online spa booking company Wahanda is to launch a new product, allowing spas to post real time availabilities for customers looking to book last minute spa breaks and holidays. The real time concept has been launched to offer

spa operators instant confirmation on forward bookings and to offer the opportunity to add new offers at any time.

Spas using the new product will also be able to showcase a 'live' calendar application, displaying available dates and prices.

Advisory forum set up to measure UK's wellbeing

TOM WALKER

A group of 40 people from across a number of backgrounds in business, academia, government and the voluntary sector have been drafted in by the Office for the National Statistics (ONS) in order to help measure the nation's wellbeing.

The National Statistician, Jil Matheson has convened the Measuring National Wellbeing Forum to engage directly in the debate with key stakeholders, including policy makers, analysts, business leaders and academics in the UK and abroad.

The forum's role will be to discuss the main themes emerging from the national debate which concludes in April and provide advice on how to deliver credible measures of subjective well-being, and of wider national well-being, to meet policy and public needs.

Matheson, who chairs the Measuring National Wellbeing Forum, said: "Through the Measuring National Wellbeing Programme, ONS is leading a debate in the UK about how best to provide a picture of 'how society is doing', that doesn't simply rely on economic data.



The Brannigans venue in Blackpool is to be sold

Cougar Leisure estate goes under the hammer

MARTIN NASH

Christie + Co., acting on behalf of administrators Begbies Traynor, is marketing six pubs and bars formerly owned by Cougar Leisure, including the Brannigans branded bars in Blackpool and Manchester and the Mood branded unit in Newcastle.

Cougar instructed the sale of 11 sites in 2010, with Christie having sold the Townhouse pub in Whitley Bay to Wear Inns; the Berkley in Wigan to Amber Taverns; and sites in Edinburgh, Liverpool and Romford to individual operators.

Hull City owners planning leisure village scheme?

TOM WALKER

Assem Allam, who acquired npower Championship club Hull City AFC in December, is rumoured to be interested in acquiring the club's home KC Stadium and developing it into a large leisure village.

According to the *Yorkshire Post*, Allam wants to increase the capacity of the Hull City Council-owned venue from 25,000 to 38,000 and to establish a large mixed-use development around it.

Hull City AFC currently shares the venue with Super League rugby club Hull FC.

Work starts on Morecambe Dome demolition

PETE HAYMAN

Lancaster City Council (LCC) has announced that work has started on the demolition of Morecambe Dome, which closed in March 2010.

In December 2008, the local authority decided to shut the aging entertainment venue amid plans for the potential redevelopment of the town's central promenade.

LCC also revealed in a 2008 condition survey that Morecambe Dome would be in need of £561,000 worth of investment to refurbish and repair the building.

UK leisure property sector 'remains resilient'

TOM WALKER

The effects of the economic downturn were felt to different degrees across the leisure market in 2010, according to property firm Christie + Co.

Christie + Co's *Business Outlook 2011* publication found that the late night sector remained under pressure, although the budget fitness, spa and cinema businesses performed well in 2010.

The budget health and fitness sector remained particularly robust, with transactional activity showing signs of being at pre-credit crunch levels. Fitness4Less, the Gym Group and Pure Gym led the field in acquisitions, exploiting the opportunity to expand their low-cost concepts into key locations.



Christie + Co said the low-cost health sector was one of the most robust

Deal activity remained subdued in the middle and at the top end of the fitness market, although private equity interest in the sector showed a marked increase on 2009.

Council ends YES Project agreement

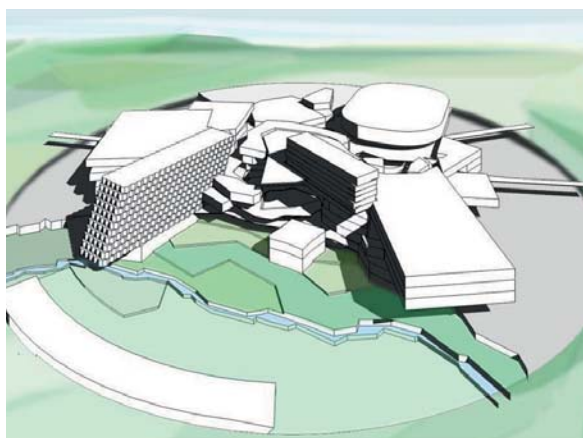
PETE HAYMAN

Oak Holdings has confirmed that Rotherham Metropolitan Borough Council (RMBC) is to terminate an agreement for the £350m YES Project.

The local authority has issued the developer with notice of its intention to end the deal, which will come into effect on 31 January.

Oak Holdings entered into a preferred developer agreement for the leisure and sports scheme with RMBC in May 2003, which has encountered delays due to the downturn.

In a statement, Oak Holdings blamed the failure to secure the necessary funds to commence the development phase for RMBC's decision to cancel the deal. However, the developer said that it would review its options and is intending to continue in its role as operator of the Rother Valley Country Park.



The local authority pulled out nearly eight years after agreeing the deal

An Oak Holdings spokesperson said: "Oak continues to own the valuable freehold of the A57 land adjacent to the site of the YES Project – the consented access land."

"Oak is also engaged in a consultancy project in the Czech Republic which is continuing and a longer term UK consultancy project."

Mixed-use scheme planned for Gloucester

PETE HAYMAN

Gloucester City Council (GCC) has entered into exclusive negotiations with Stanhope over plans to redevelop the city's Kings Quarter.

The local authority will work with the London-based developer to draw up a concept

project for the site, which is likely to include bars, restaurants and public squares.

GCC leader Paul James said: "Once delivered, it will give a massive boost to the city's economy and its performance as a shopping and leisure destination."

Hospitality & Leisure

Specialist Property Services

Valuations, Sales, Aquisitions, Rent Reviews, Expert Witness.

Contact: Colin White
colin.white@edwardsymmons.com

London • Bristol • Leeds • Liverpool • Manchester • Plymouth • Southampton

Edward Symmons **020 7344 4500**
www.edwardsymmons.com

Rating • Planning & Site Licensing

CHARLES F. JONES & Son LLP
CHARTERED SURVEYORS

Leading Professional Advisors to the Leisure Industry for over 70 years

Charles F Jones & Son LLP
01244 328141 www.cfj.co.uk
16 Grosvenor Court Foregate Street Chester CH1 1HN

Valuations • Sales & Acquisitions

UK and international property experts covering all sectors of the leisure and hotel industry

Alan Plumb
+44 (0) 1865 269000
aplumb@savills.com
savills.co.uk/leisure

savills
savills.com

HL HUMBERTS LEISURE

specialist professional leisure property expertise

- Sales
- Planning
- Purchases
- Rent reviews
- Arbitrations
- Rating
- Lease renewals
- Expert witness
- Valuations
- Consultancy
- Viability & feasibility
- Funding

London +44 (0)20 7629 6700 South +44 (0)1962 835 960
North +44 (0)1756 799 271 South East +44 (0)1273 325 911
South West & Wales +44 (0)29 2022 6892

www.humberts-leisure.com

LEISURE PROPERTY FORUM CORPORATE MEMBERS' DIRECTORY



For membership information
please contact Michael Emmerson
info@leisurepropertyforum.org

www.leisurepropertyforum.org

3D Reid
Tel: 0121 212 2221
www.3dreid.com

Alan Conisbee & Associates Ltd
Tel: 020 7700 6666

Ashurst LLP
Tel: 020 7638 1111
www.ashurst.com

BCI Design
Tel: 020 7021 0217
www.bci-design.com

Berwin Leighton Paisner
Tel: 020 7760 1000
www.blplaw.com

Brook Street des Roches LLP
Tel: 01235 836614
www.bsdr.com

CB Richard Ellis Ltd
Tel: 020 7182 2197
www.cbre.com

CgMs Consulting
Tel: 020 7583 6767
www.cgms.co.uk

Chase & Partners LLP
Tel: 020 7389 9494
www.chaseandpartners.co.uk

Christie + Co
Tel: 0113 389 1700
www.christiecorporate.com

CMS Cameron McKenna LLP
Tel: 020 7367 2195
www.cms-cmck.com

Colliers International UK plc
Tel: 020 7487 1710
www.colliers.com/uk

Cushman & Wakefield LLP
Tel: 020 7152 5209
www.cushwake.com

Davenport Lyons
Tel: 020 7468 2600
www.davenportlyons.com

Davis Coffey Lyons
Tel: 020 7299 0700
www.coffergroup.co.uk

DKA Associates
Tel: 020 7034 5267
www.dkalp.com

DLA Piper Rudnick Gray Cary UK LLP
Tel: 020 7796 6155
www.dlapiper.com

Drivers Jonas Deloitte
Tel: 0207 3033702

E3 Consulting Limited
Tel: 0845 230 6450
www.e3consulting.co.uk

Edward Symmons LLP
Tel: 020 7344 4500
www.edwardsymmons.com

Finers Stephens Innocent LLP
Tel: 020 7344 5312
www.fsilaw.com

Fladgate LLP
Tel: 020 3036 7000
www.fladgate.com

Fleurets Limited
Tel: 020 7280 4700
www.fleurets.com

Gala Leisure Limited
Tel: 0115 948 5370
www.galacoral.com

Genting Casinos
Tel: 0118 939 1811
www.gentingcasinos.co.uk

Gerald Eve
Tel: 020 7333 6374
www.geraldeve.com

Grant Thornton UK LLP
Tel: 01753 781167
www.uk.gt.com

Hadfield Cawkwell

Davidson Limited
Tel: 0114 266 8181
www.hcd.co.uk

Hermes Real Estate

Investment Management Ltd
Tel: 020 7680 2145
www.hermes.co.uk

Humberts Leisure
Tel: 020 7629 6700
www.humberts-leisure.com

Indigo Planning
Tel: 020 8605 9400
www.indigoplanning.com

Jones Lang Lasalle
Tel: 020 7399 5326
www.joneslanglasalle.co.uk

Kerry London Ltd
Tel: 020 7623 4957
www.kerrylondon.co.uk

King Sturge LLP
Tel: 020 7087 5500
www.kingsturge.com

Lawrence Graham LLP
Tel: 020 7379 0000
www.lg-legal.com

Legal & General Investment Management Holdings Ltd
Tel: 020 3124 2763
www.lgim.co.uk

Leisure Opportunities
Tel: 01462 471 905
www.leisureopportunities.co.uk

Matthews & Goodman
Tel: 020 7747 3157
www.matthews-goodman.co.uk

Mayer Brown Rowe & Maw LLP
Tel: 020 7782 8890
www.mayerbrownrowe.com

Merlin Entertainments
www.merlinentertainments.biz

MWB Management Services Ltd
Tel: 020 7706 2121
www.mwb.co.uk

Odeon & UCI Cinemas Ltd
Tel: 0161 455 4000
www.odeonuk.com

Olswang
Tel: 020 7067 3114
www.olswang.com

Pinders
Tel: 01908 350500
www.pinders.co.uk

Reed Smith LLP
Tel: 020 3116 3000
www.reedsmith.com

Roberts Limbrick Ltd
Tel: 03333 405500
www.robertsrimbrick.com

Royal Bank of Scotland plc
Tel: 020 7672 1752
www.rbs.co.uk/corporate

RTKL-UK Ltd
Tel: 020 7306 0404
www.rtkl.com

Saturn Projects Limited
Tel: 01844 354543
www.saturnprojects.com

Savills (L&P) Ltd
Tel: 020 7409 8700
www.savills.com

Shelley Sandzer
Tel: 020 7580 3366
www.shelleysandzer.co.uk

The Leisure Database Co
Tel: 020 7379 3197
www.theleisuredatabase.com

Thomas Eggar LLP
Tel: 01293 742747
www.thomaseggar.com

Tragus Group
Tel: 020 7121 6432
www.tragusgroup.com

Vizards Wyeth Solicitors & Notaries
Tel: 020 7400 9999
www.vizardswyeth.com

Vue Entertainment Ltd
Tel: 020 8396 0100
www.myvue.com

Willmott Dixon Construction Ltd
Tel: 01932 584700
www.willmott Dixon.co.uk

X-Leisure
Tel: 020 7592 1500
www.x-leisure.co.uk

Plus there are more than 70 other companies represented by individuals.

Advertisement for the tender of Culture and Leisure Services



The Council is inviting expressions of interest from suitable competent operators for the management of all of the following culture and leisure facilities and services within the District of Cannock Chase.

- Rugeley Leisure Centre
- Chase Leisure Centre
- Cannock Park Golf Course
- The Museum of Cannock Chase
- The Prince of Wales Theatre
- Community Wellbeing Services, (Arts, Sports and Play)
- Business Development and Support Services, (as appropriate in support of the above services)

Looking to the future, the Council wishes to enter into a long term partnership with one or more partners for the management of its Cultural and Leisure services for up to 20 years. The partner(s) will have a strong track record in the management of these services and facilities and be able to bring innovation, improvement and increase levels of participation throughout the District. In addition to the services and facilities listed above the scope of this procurement includes all of the integral support services required to deliver and develop effective services.

Working in partnership the core outcomes will be to:

- Increase participation in sports and physical activity
- Increase participation and attendance in cultural activities
- Increase value for money by delivering minimum target savings of £540k per year, (in a full year)

Please note that the Culture and Leisure Services to which this procurement exercise relates fall within Part B of Schedule 3 to the Public Contracts Regulations 2006 ("the regulations") and Annex IIB to council directive 2004/18/EC. Whilst the Service requirement has been advertised via the OJEU neither the placement of this advertisement [or contract notice] or any other indication shall be taken to mean that the Council intend to hold themselves bound by any of the regulations save those applicable to Part B Residual Services. Please note the Council will not be liable for any costs incurred by Applicants in the preparation of their pre-qualification submissions, tender documents or any other submissions related to this procurement exercise. The contract term will be for a minimum of Ten (10) years with the option to extend for Two, (2) periods of Five (5) years.

It is the Council's intention to comply with the Code of Workforce Practice in order to protect the employment terms and conditions of existing employees transferred to successful operator(s).

Expressions of interest should be made via e-mail to the following address strategicprojects@cannockchasedc.gov.uk for the attention of Tony McGovern, Corporate Director and a Pre-Qualification Pack will be sent out to interested operators.

The deadline for the completion and submission of the Pre-Qualification Questionnaire is Midday Friday March 4 2011.



Carmarthenshire County Council invites tenders for the Management of Garnant Park Golf Club. The concession contract and Lease shall be for a 25 year period.

Parties who wish to tender will be sent the Tender Pack, which must be returned, as directed by 12 noon, 29th March 2011.

Garnant Park Golf Course is an 18 hole municipal course, which was completed in 1997. The course was designed by Roger Jones Golf Associates and constructed to a modern USGA specification, with fully automated Rain Bird irrigation system on all 18 greens. The course extends over an approximate area of 120 acres and is described as an upland/parkland course. The clubhouse was opened in 1998, comprising of a restaurant, bar, pro shop, office and living space for 1-2 persons, showers and changing area.

Carmarthenshire Council wishes to invite suitably experienced and qualified companies or organisations, to submit a tender to manage and develop Garnant Park Golf Course under an initial 25 year Lease and Operating Agreement.

The operation will be supported by a maximum subsidy of £200k for the first 5 years of the Concessionary Contract and will be profiled in accordance to the Costing Schedule within the Tender documentation

Facilities included within the Lease and Operating Agreement are outlined below:

- 5 hole pitch and putt
- Golf Shop
- Booking Office
- Changing Rooms
- Putting Green
- Practice Area
- Car Park
- Whole of the Golf Course
- All outbuildings
- The access road

The successful company will, as a minimum, be expected to:

- Operate the facility and provide the best financial terms to Carmarthenshire County Council from the outset of the agreement and for the duration of the lease period.
- To be the landlords of Garnant Park Golf Club.
- Employ the current grounds maintenance under a TUPE agreement.
- Manage the booking office and pro shop.
- Work in partnership with Carmarthenshire County Council.
- Outline the proposed investment into the facilities over the initial 25 year period of the lease.

Please note TUPE may apply in this contract, further details included in the tender documents.

For further information and requests for the Tender Pack please contact:

Berian Allcock
Activity and Health Manager
Business Resource Centre
Parc Amanwy
New Road
Ammanford
Carmarthenshire
SA18 3EP

Tel: 01269 590234

Email: BAAllcock@carmarthenshire.gov.uk

Tenders will be evaluated to determine the most economically advantageous offer in accordance with the criteria stated in the Tender documents.

Carmarthenshire County Council does not bind itself to accept the lowest or any tender subsequently received.

A "How to Tender" workshop will be held on the morning 11th March 2011 for all interested parties. For further information please see Tender Documentation.

Cycle Hire

Black Park Country Park

Wexham, Buckinghamshire. SL3 6DS

Expressions of Interest are invited for the opportunity to operate cycle hire activities at Black Park Country Park, Buckinghamshire. www.bucksc.gov.uk/countryparks

An exciting opportunity has arisen to develop and operate a cycle hire facility at Black Park Country Park. Located just outside the M25, Black Park has over 500 acres of attractive woodland, over 13 miles of accessible tracks and excellent facilities including GoApe, a high wire forest adventure and popular café, together attracting in excess of 500,000 visitors per annum. Black Park is self-funded and reliant on the income it generates on site for its daily management.

We are currently seeking expressions of interest from established cycle hire companies to develop and operate a family orientated cycle hire facility.

Interested parties are asked to provide an outline proposal in writing of the activities that they would like to offer; suggested operating times/dates, the length of lease being sought and what financial package they would offer:

Proposals should be posted to: The Countryside Centre, Black Park Country Park, Black Park Road, WEXHAM SL3 6DS

The deadline for receipt of proposals is midday on Tuesday 1st March 2011



Theatre • music & entertainments • community hall • hire venue with ancillary bar • restaurant

Holds up to 400 people

Prominent location overlooking the sea

THE WINTER GARDENS, VENTNOR, ISLE OF WIGHT EXPRESSIONS OF INTEREST SOUGHT

The Isle of Wight Council is seeking expressions of interest in the form of a financial and operational proposal for the building, which is available on flexible terms with the tenure open for negotiation, (freehold or long-leasehold).

The council would expect any proposal to provide for some continued community use of the building as a theatre/hire venue.

Deadline for expressions of interest: 22 March 2011

For further information and/or assistance with preparing a proposal, contact jason.doughty@iow.gov.uk tel: (01983) 823467



PAVILION AND PLAYING FIELDS

WEST WIMBLEDON

6.35 ACRES

**99 YEAR LEASE
FOR SALE**

CONTACT: M.NAYLOR

0208 545 3186

PROPERTY MANAGEMENT AND REVIEW

LONDON BOROUGH
OF MERTON

PUTTING YOU FIRST



Expressions of Interest for Theatre Management Contract

The Hawth Theatre, Crawley, West Sussex.

The Hawth Theatre in Crawley offers one of the liveliest and most diverse programmes of arts and performance in the South East.

Opened in 1988, the Hawth is now recognised as a regional venue with an excellent reputation for presenting a quality, wide ranging programme of productions, events and concerts. It is also highly regarded as a unique and inspiring venue for meetings and conferences, with a versatile range of rooms and facilities available.

During 2009/10, the Hawth staged over 400 concerts and events and hosted more than 900 meetings, attracting a total attendance of 184,000 (Box Office attendance 145,000).

Situated close to the town centre in a 38 acre wooded site, the Hawth consists of a main auditorium with a seating capacity of 862, a studio theatre seating 147, seven meeting rooms with capacities ranging from 8 to 80, the Arts Cafe (90 covers), an occasional restaurant (60 covers), two licensed bars, a fully equipped kitchen, an outdoor amphitheatre with a seating capacity of 300 and car parking.

Crawley Borough Council is seeking expressions of interest from suitably experienced companies to manage The Hawth for an initial period of 7 years with an option to extend for a further 7 years, with effect from 1 February 2012.

The Council considers that the existing staff will transfer under the Transfer of Undertakings (Protection of Employment) regulations (TUPE) and that the Code of Workforce Matters may apply.

Potential partners are required to complete a Pre-Qualification Questionnaire and demonstrate suitable company experience to be included in the Council's tender short list.

Interested organisations can request an information pack and pre-tender questionnaire from:

Heather Girling, Crawley Borough Council, Town Hall, The Boulevard, Crawley, West Sussex RH10 1UZ. Telephone: 01293 438222
Email: heather.girling@crawley.gov.uk

If you would like to discuss this opportunity further, please contact Nigel Sheehan, Head of Community Services on 01293 438728

The closing date for receipt of completed questionnaires is 12 noon on Monday 28 March 2011.



Scottish tourism firms open to future talent



SAM COULSTOCK is careers director of The Springboard Charity and Springboard UK

Tourism businesses across Scotland are facing an increasingly difficult recruitment market, where a competitive edge is needed to attract the best talent Scotland has into local jobs. What better way to help address the skills and the jobs issue than by coming together as a whole for one week?

Springboard is co-ordinating a week-long campaign of careers promotion activity under the banner of Scottish Tourism Careers Week, which will run parallel to Tourism Week from 28 February to 7 March. The aim of this campaign is to inform teachers and careers advisers, about careers in hospitality, leisure and tourism and to inspire the general public, students and potential recruits to become future employees in the industry.

There will be activities designed for primary and secondary school pupils, university students, those seeking employment and for personnel who are in a position to influence others in relation to their career choices. Springboard Scotland will work together with a wide range of organisations and partners to deliver a bespoke campaign designed to illustrate how exciting and diverse an industry this is.

Some activities which Springboard Scotland will be promoting include Buddy Taster Sessions. These sessions will offer an easy-to-access opportunity to provide unforgettable experiences for a range of people who can help raise the profile and improve the image of the industry.

Springboard UK Ambassadors will see people already working in the sector helping to spread the word about the opportunities across the industry by going into schools and colleges and speaking to teachers and parents, while businesses are invited to join existing Springboard Business Partners in reaching out to local schools under the Adopt a School Programme.

For more information and to participate in these activities, please visit www.scot-tishcareersweek.springboarduk.net.

TRAINING

Glasgow 2014 legacy progress revealed

PETE HAYMAN

Glasgow is already benefiting from the 2014 Commonwealth Games, according to a new progress report put before the local authority.

Local firms have secured nearly half of Games contracts worth £158m that have been made available through the Commonwealth Business Portal. Elsewhere, there were 900 Commonwealth Apprenticeships created for school leavers in 2009, while the Commonwealth Games Jobs Fund is expected to support 1,000 jobs by July 2012.

The study – put before Glasgow City Council's executive – also set out actions needed to continue fulfilling legacy aims. Archie Graham, executive member for the



The council study said 900 apprenticeships were created during 2009

Games, said: "The city council's legacy plan aims to involve as many people, businesses and organisations as we can to ensure the greatest possible benefit can be achieved."

PZEP 'becomes outdoor classroom'

PETE HAYMAN

Paignton Zoo Environmental Park (PZEP) has confirmed that it is now part of the nationwide Growing Schools initiative, which is designed to promote outdoor learning.

The 80-acre (32.4-hectare) Devon attraction is planning to run an after-school twilight session in March to tell teachers about the teaching resources on offer at the zoo.

Growing Schools is a nationwide scheme funded by the Department of Education and is run in partnership with the Botanic Gardens Education Network.

The programme has developed an award for gardens that provide advice and training for schools, as well as showing how gardens can be used to encourage learning.

PZEP curator of plants and gardens Kevin Frediani said: "The Growing Schools Gardens



PZEP curator of plants Kevin Frediani and educator Catherine Addison

scheme sets a national standard for educational visits to gardens. Achieving the standard means we are recognised by the Department for Education and by Growing Schools for the quality of our site and the standard of our educational provision, with high quality teaching and learning experiences."

Bournemouth in line for hotel training school

PETE HAYMAN

A new four-star hotel training school could be established in Bournemouth under plans agreed by the local authority on 26 January.

Bournemouth Borough Council cabinet members approved plans to move forward

with legal agreements with developer Chesham Estates as part of the scheme.

Plans are due to be submitted by Chesham Estates in April, which will feature a 200-room property; car parking; and a link to the Bournemouth International Centre.

Think it's too late to change your career? Think again



Leeds Met offers a range of courses for people interested in sport, leisure or tourism; either as a career or for your own personal interest.

Courses include:

- MA Leisure, Sport & Culture
- MA International Tourism & Hospitality Management
- MA Cultural Tourism
- MA Retail Business Administration
- MSc Responsible Hospitality Management

Visit www.leedsmet.ac.uk/postgrad to find out more.

Postgraduate Open Evening
7 June 2011, 5pm-7pm

The Rose Bowl, Portland Gate, Leeds

To find out more visit
www.leedsmet.ac.uk/postgrad



leisureopportunities

www.leisureopportunities.co.uk

news & jobs updated daily online

YOUR 1ST CHOICE FOR RECRUITMENT & TRAINING

Forthcoming Issues:

22 FEBRUARY 2011
Book by NOON on
Weds 16th February 2011

8 MARCH 2011
Book by NOON on
Weds 2nd March 2011

22 MARCH 2011
Book by NOON on
Weds 16th March 2011



TO ADVERTISE, CONTACT THE LEISURE OPPORTUNITIES TEAM ON
t: +44 (0)1462 431385 f: +44 (0)1462 433909
e: leisureopps@leisuremedia.com

Focus Training

Adding value to your staff

As an employer of fitness professionals, you'll recognise the value of investment in training them to ensure they deliver the best possible service to your membership.

Fantastic professional courses available in:

- Personal Training
- Exercise to Music
- Gym Instructor
- Step
- Studio Cycling
- Nutrition & Weight Management
- GP Exercise Referral
- And much more.



Call Focus Now:

0333 9000 222
or 01204 388330

www.focus-training.com

SAY HELLO TO SOHO GYMS

A new standard in training, unique learning in a real gym to kick start your career.

- Personal Training Cert/Dip
- Level 2 Gym Instructor
- Many Short Courses

Contact our Academy on 08000 54 66 55 or academy@sohogyms.com



Health and Fitness Courses

Kingston College courses provide learners with the opportunity to study for a range of dynamic, industry recognised qualifications and workshops that will give you the edge whether working for employers or as a self employed fitness professional.

Specific Fitness Courses

- Active IQ Level 2 Certificate in Fitness Instructing (Gym)
- Active IQ Level 3 Certificate in Personal Training
- Active IQ Level 2 Certificate in Instructing Circuit Sessions
- National Academy of Sports Medicine Qualifications (NASM)

Specialist Workshops

- POSE Technique Running Workshops
- Enhancing Sports Performance

For more information please contact Glenn Osborn on 0208 268 2575 or glenn.osborn@kingston-college.ac.uk



Chronic Respiratory Disease Exercise Instructor Course

*** LAST CHANCE TO APPLY FOR A BLF BURSARY ***

This innovative **distance learning** course (with one contact day and half day assessment) is for exercise professionals who are looking to develop their knowledge of respiratory disease in the context of safe and effective exercise programming for this client group.

The British Lung Foundation would like to welcome applicants to apply for a BLF bursary for a place on this course. The next course will begin in January 2011 for which the application deadline is the **20th December 2010**.

For more details or an application pack go to www.lunguk.org or contact Danielle on 020 7688 5618 or www.exercise@blf-uk.org

Reg. charity of England & Wales - no. 326730
Charity reg in Scotland - no. SC038415

British Lung Foundation Active

Why not take control of your HSE First Aid needs?

The Five-Day First Aid Instructor Course
Includes the PTLLS Level 3 Training Qualification

Nuco Training Ltd
08456 444 999
enquiries@nucotraining.com
www.nucotraining.com
www.nucoplus.com

"...I found the Instructor Course to be excellent and a credit to your company..."
Debbie Hull (Bishops Cleeve)

NUCO training City & Guilds Approved Centre

FOR ALL YOUR FIRST AID NEEDS



SIRC Sport Industry Research Centre

SPORT AND LEISURE STATISTICS

FORECASTS FOR THE SPORT AND LEISURE INDUSTRIES

The Sport Industry Research Centre publishes two annual reports, Leisure Forecasts and Sport Market Forecasts. These reports provide valuable insight into future market trends.

Both publications are essential references for industry practitioners, consultants and researchers.

The Sport Market Forecasts are produced in conjunction with Sport England.

To find out more please visit www.shu.ac.uk/ad/sportandleisure

Or contact
Susie Shaw
Phone 0114 225 5919
Fax 0114 225 4341
Email s.shaw@shu.ac.uk

Sheffield Hallam University

SPORT ENGLAND

leisure opportunities joblink

Book a joblink with us and we'll put your logo and company name on every page of the Leisure Opportunities website www.leisureopportunities.co.uk

This advert will have a hyperlink to your website, where you can list all the job vacancies in your company.

Go to www.leisureopportunities.co.uk and click on the link to see the latest jobs from...

YOUR Personal Training **SPAFINDER** **JORVICK BARLEY HALL**
National Trust

TO BOOK Call: +44 1462 471747
and start getting applications for your jobs IMMEDIATELY!





HEALTH AND PARTICIPATION OFFICER

Location: Flexible

(regular travel to Loughborough and London)

All Hours Worked

£28,216 pa (plus benefits)

The ASA, the National Governing Body for Swimming, is seeking a Health and Participation Officer to develop and implement health and participation interventions and to ensure delivery of the national KPI, 270,000 more people swimming once a week.

The job will require an individual with leadership, relationship building, project and time management skills. The health agenda, working with health partners, sourcing external funding and marketing experience are all essential for this position.

The individual will need a good knowledge of the Microsoft suite, including PowerPoint, as presentations will be a requirement. In addition to this you must possess excellent communication skills, have the ability to work on your own initiative and as part of a team as well as having a flexible approach to work.

It would be beneficial for the individual to have experience of sports development, working with volunteers and working with budgets.

So if you feel you have the suitable skills and attributes for this position then we would like to hear from you.

To obtain an application pack contact our recruitment telephone line (24hrs) on 01509 618703, email HRdepartment@swimming.org or download a pack from our website www.swimming.org



Closing date: 12.00pm on Friday 25th February 2011
Interview date: 7th March 2011 in Loughborough

The ASA is an equal opportunities employer and a holder of the Equality Standard at Foundation, Preliminary and Intermediate levels. A non-smoking policy operates throughout our premises occupied.

A CRB check will be taken up as part of the employment.

www.swimming.org

CLEVEDON SCHOOL SPORTS CENTRE

VALLEY ROAD, CLEVEDON
NORTH SOMERSET BS21 6AH
Company number 7466599



Clevedon School Sports Centre is a newly formed company set up to provide outstanding Sporting and Leisure opportunities to the people of Clevedon and students of Clevedon School. The Trustees have a clear vision of creating a centre of sporting excellence. Clevedon is an attractive seaside town south of Bristol and the sports centre is situated in the school grounds, in the picturesque Swiss Valley.

Sports Centre Manager [Required from 1st April 2011]

Salary in the region of £25000 + bonus

We are seeking:

- A highly motivated individual with a passion for sport to be responsible for the day to day operational running of the centre.
- An individual with a strong business background who is prepared to improve and develop the existing facilities.
- An individual who can inspire a team to deliver outstanding service and develop the existing customer base and attract new.
- A manager who can see the potential of the project and has the drive to achieve the vision.

We are offering:

- A good remuneration package with a strong potential to increase..
- A pleasant environment in which to work, where taking risks is encouraged and support is strong.
- The opportunity to be in at the beginning of an exciting project and help to create something special.

"The trustees see this appointment as the key to the success of Clevedon School Sports Centre and are therefore looking for an exceptional individual who can buy into the long term vision of the company and is prepared to commit to achieving our goals."

If you are excited by this opportunity, then please contact David Bishop for further information and to arrange a visit.

An application form and further details are available from and should be returned to David Bishop at the above address.

Tel: 01275-337416 Fax: 01275-340935 E-mail: cssc@clevedon.n-somerset.sch.uk

Closing date for applications: Friday 25th February 2011

Interviews to be held 7th & 8th March 2011

Clevedon School Sports Centre is committed to safeguarding and all applicants will be vetted through ISA/CRB checks.

General Manager (Operations)

Do you have the professional and interpersonal skills to drive forward the new £8m sports and fitness centre in North Dorset?

It acts as a hub for the local community, providing meeting rooms, reception facilities, a six-lane 25 metre swimming pool, fitness suite and four court sports hall.

You are probably a general manager or operations manager with business experience and judgment. You have a proven track record in project management, with the knowledge and imagination to develop leisure services that appeal to the local community. You will grow our business and inspire our team.

Ideally you will have a professional qualification and background in recreation management, a detailed understanding of the day-to-day operation of sports and fitness facilities and a thorough grasp of health & safety and other relevant regulations.

Salary: £28k negotiable for the right person

Closing date 14th February 2011

Email: recruitment@riversmeetgillingham.org



Wild 'n' Wacky is a jungle themed children's Play & Party Centre in Harlow, Essex. Due to a phenomenal first year's trading, we are looking to expand our team with the creation of two new senior positions.

CENTRE MANAGER c. £22,000 + bonus + benefits

Responsible for the efficient day to day running of the centre, the successful candidate will have experience of operational and facility management.

Reporting to the Company Directors this role requires an enthusiastic, energetic and driven individual looking to thrive in a busy environment where no two days are ever the same.

DUTY MANAGER c. £17,000 pa + benefits

Responsible for supervision of the Duty Team ensuring that high levels of customer service, cleanliness & health & safety protocols are followed at all times.

To apply, please send a covering letter and CV for the attention of Mark Lenihan to info@wildnwacky.co.uk. Closing date for both positions is Friday 25th February.

Wild 'n' Wacky, Unit 5, Mill Court, Harlow, Essex CM20 2JA

T: 01279 426976 E: info@wildnwacky.co.uk W: www.wildnwacky.co.uk

WODSON PARK

Wodson Park Trust
Wadesmill Road Ware Hertfordshire SG12 0UQ
Reg Charity No: 1101130
COMPANY REGISTRATION NO: 04757847

Wodson Park is a unique multi-faceted Sports and Recreation Facility and a registered charity. We are looking for an experienced and high achieving **GENERAL MANAGER** who has managed significant budgets and teams of staff.

The successful candidate will have financial and operational accountability for Wodson Park and would be required to drive the business through the effective management and development of staff.

People management skills are essential, and we are looking for a person with a proven track record in the world of commerce with a desire to innovate and develop the business.

He or she would need to ensure that targets both financial and otherwise are achieved, whilst delivering exceptional service standards across the facilities.

Further details on this post are available by contacting Bob Wood - Chief Executive Wodson Park on 07971 514197.

Candidates should forward their CV showing salary details, together with a covering letter which would give the Board of Directors of Wodson Park an insight into the reasons why you believe you are the person to take this business forward.

Email: bob.wood@weblight.co.uk

CLOSING DATE: 28th February 2011

For more details on the following jobs
visit www.leisureopportunities.co.uk
or call +44 (0)1462 431385



Club and Coach Support Officer x2

Company: England Athletics
Salary: £25,000 - £35,000 per annum
Location: Birmingham / Gloucestershire and Essex & London Boroughs
Closing date: 10 Feb 2011

Customer Support Manager

Company: Central YMCA
Salary: £26,614 - £30,110
Location: Central London, United Kingdom
Closing date: 11 Feb 2011

Gym/Studio Instructors (part time)

Company: The Daniels Fitness Group
Salary: Competitive
Location: Brackley, United Kingdom
Closing date: 11 Feb 2011

Sales Managers

Company: Virgin Active
Salary: £competitive + uncapped commission
Location: Nationwide opportunities, UK

Centre Manager

Company: Bracknell Forest BC
Salary: £31,400 - £35,900
Location: Bracknell, United Kingdom
Closing date: 14 Feb 2011

Personal Trainers Wanted!

Company: YOUR Personal Training
Salary: OTE £40-60K
Location: Various (see details) UK
Closing date: 14 Feb 2011

Sports Development Manager

Company: University of Birmingham
Salary: £36,715-£43,840
Location: Birmingham, United Kingdom
Closing date: 17 Feb 2011

Operations Manager

Company: Wave Leisure
Salary: £18,782
Location: United Kingdom
Closing date: 21 Feb 2011

Swimming Pool Manager

Company: University of Nottingham
Salary: £25,001
Closing date: 28 Feb 2011

Golf Club Manager

Company: Bentham Golf Club
Location: High Bentham, United Kingdom
Closing date: 28 Feb 2011

Trainee Tutor

Company: The Training Room
Salary: Starting salary is £14k
Location: Nationwide, United Kingdom
Closing date: 24 Jul 2011

Trainee Personal Trainer / Fitness Instructor

Company: The Training Room
Salary: £20K-£30K
Location: Nationwide, United Kingdom
Closing date: 01 Mar 2011

Become an Exercise to Music Instructor

Company: YMCA Fitness Industry Training
Location: Nationwide, United Kingdom
Closing date: 31 Oct 2011

General Manager, Peak District

Company: National Trust
Salary: Up to £50k pa
Location: Hope, Derbyshire, UK
Closing date: 28 Feb 2011

Assistant Spa Manager

Company: Sunswept Resorts
Salary: negotiable
Location: St Lucia, Caribbean, Saint Lucia

Spa Therapist

Company: The Langdale Estate
Location: Ambleside, Cumbria, United Kingdom

Duty Manager

Salary: £17k - £20k
Company: Harlow Leisure Zone
Location: Harlow, Essex, United Kingdom

Personal Trainers

Company: Steiner One Spa World
Location: United Kingdom

General Manager (Operations)

Salary: £28k negotiable
Company: RiversMeet
Location: Gillingham, Dorset, UK

Become a Gym Instructor

Company: Focus Training
Location: Nationwide, United Kingdom

Become a Personal Trainer

Company: Focus Training
Location: Nationwide, United Kingdom

Health and Participation Officer

Salary: £28,216 pa (plus benefits)
Company: Amateur Swimming Association
Location: Flexible, United Kingdom

Sports Centre Manager

Salary: £25,000 + bonus
Company: Clevedon School Sports Centre, UK

Customer Service and Training Advisor

Company: Delta
Location: Uckfield, United Kingdom

Business Manager

Salary: Circa £38,000 per annum
Company: The Great Outdoor Gym Company Ltd
Location: London, United Kingdom

Talent Executive

Company: PEEL
Location: Skipton, United Kingdom

'Future Leaders' management development programme

Company: Goals Soccer Centres plc
Location: Nationwide, United Kingdom

Head of Visitor Services

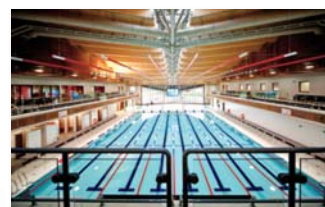
Salary: Competitive salary package
Company: Atholl Estates
Location: Highland Perthshire, UK

for more news and jobs updated daily visit www.leisureopportunities.co.uk

Duty Manager

£17 – £20k

dependant on qualifications and experience



Harlow Leisurezone are looking to recruit a pro-active Duty Manager who will undertake a wide range of tasks including the direct responsibility for planning and co-ordinating all wet and dry courses for the centre.

Course Role

You will lead a number of coaching teams ensuring that all wet and dry courses and activities within the centre are programmed, planned, on budget and developed to a high standard and fulfil our requirements. This may also involve some coaching on occasions.

Duty Manager Role

You will be required to work a minimum of six Duty Manager shifts over a four week period with occasional additional shifts required to cover for absence of other members of the team.

The Duty Manager has responsibility for the efficient and effective operation of the whole centre, to include managing health and safety, managing staff, customer care and operations whilst on shift.

Our ideal candidate will have excellent planning and people skills, a calm head under pressure and previous relevant experience of working with customers on the front line. You will also have exceptional communication and leadership skills with the ability to organise individuals, teams and tasks. Experience of coaching and working in a leisure environment, plus an understanding of what types of courses or activity sessions are popular would be advantageous.

Application forms are available on our website www.harlowleisurezone.co.uk, by telephoning 01279 621512 or email borthwick@harlowleisurezone.co.uk for an application pack.

Closing date for all applications: 28 February 2011.

If you do not hear from us within three weeks of the closing date please assume you have been unsuccessful on this occasion. Interviews will be taking place on: 8 & 9 March 2011

Harlow and District Sports Trust – Harlow Leisurezone, Second Avenue, Harlow, Essex CM20 3DT

www.harlowleisurezone.co.uk



LANCASTER CITY COUNCIL
Promoting City, Coast & Countryside



COMMUNITY ENGAGEMENT SERVICE

ACTIVE HEALTH OFFICER

(This post is fixed term for a period of 12 months)
The current salary grade for this post is:
£17,161 - £21,519 Grade 3 (SCP 18 – 25)
VAC REF: 36_10

We are looking for a suitably qualified and experience person to assist with further developing and delivering the Council's exercise referral scheme.

This is a great opportunity for the right person and with this in mind you must have experience in a role involving the delivery of sport and/or physical activity projects for both adults and young people. You must also have the ability to communicate with a variety of agencies and at different levels and be able to work as part of a team and on your own initiative.

Your work will involve arranging and undertaking assessments, recording and storing client data, designing and delivering activity programmes, monitoring and evaluating activity programmes, liaison and monitoring of other activity providers.

You must have a level 2 fitness instructor qualification and be exercise/GP referral trained. You must also hold a full current driving licence.

Closing Date: Friday 18 February 2011

For an application form and further details please apply online or e-mail recruitment@lancaster.gov.uk. Alternatively please call in to the reception area at Lancaster / Morecambe Town Hall or telephone 01524 582176 (24 hour answering service).



Lancaster City Council aims for Equality of Opportunity for All

WWW.LANCASTER.GOV.UK

HARROW SCHOOL

An independent boarding school for 13 – 18 year old boys

SPORTS FACILITIES MANAGER

for
HARROW SCHOOL ENTERPRISES LTD

To start early May

We are looking for a dynamic, self motivated and confident individual to take on a new and challenging role that will encompass the management of our newly extended sports centre and external facilities to include the operation, membership, marketing and staffing of this new and vibrant facility.

Experience in managing a commercial leisure facility at a senior level is essential. Applicants must also possess the skills and abilities to motivate a large and diverse range of staff. Excellent interpersonal skills will be essential in order to create a positive and innovative atmosphere, which will encourage staff to commit themselves to stringent targets and regularly go beyond the call of duty in order to achieve objectives.

Excellent ICT and communication skills are essential coupled with excellent attention to detail in order to achieve success.

Benefits package includes a free lunch and use of the sports facilities.
Application packs are available online at www.harrowschool.org.uk/vacancies or please contact:

Sharon Exelby, Personnel Officer, 5 High Street, Harrow HA1 3HP
Tel: 020 8872 8293 personnelofficer@harrowschool.org.uk
Closing date: Friday 4 March 2011

*The School is committed to safeguarding and promoting the welfare of children and all successful applicants must be willing to undergo child protection screening appropriate to the post, including checks with any past employer and the Criminal Records Bureau.
Harrow School is an equal opportunities employer*

www.harrowschool.org.uk

Pontin's acquired by hotel group

PETE HAYMAN

KPMG has confirmed that it has agreed a deal with the Britannia Hotel Group to sell holiday park operator Pontin's as a going concern.

Jane Moriarty, David Costley-Wood and Rob Croxen were appointed joint administrators of the Pontin's business in November last year after it encountered financial difficulties.

Britannia will now take over Pontin's five holiday parks – Prestatyn Sands in North Wales; Brea Sands, Somerset; Pakefield, Suffolk; Southport; and Camber Sands, West Sussex.

The sale of the business will also help to safeguard 850 jobs and it is hoped that Pontin's long-term future will now be secure.



Pontin's future is looking brighter after being bought by the hotel group

Britannia's Alex Langsam said: "Our plans will take shape without delay as we look towards developing a bright future whilst retaining the best traditions of the past."

Government draws up Tote bidder shortlist

PETE HAYMAN

The government has confirmed that a "selected number" of bidders will go forward to the next stage of the Tote sale process.

Tourism minister John Penrose said that 18 indicative proposals had been received, but has

refused to reveal the identities of the bidders or those that have been shortlisted.

A further update on the sale of the Tote is due to be given to the House of Commons in the spring, after it receives more detailed information from the shortlisted parties.

Go Ape eyes US and Australia move

TOM WALKER

Adventure Forest, which owns and operates the Go Ape brand of treetop adventures, has secured a loan deal with Clydesdale Bank which is designed to allow it to add to its single US site and expand into Australia.

The company, which currently has 26 Go Ape courses around the UK and a single site in Washington, US, has also announced plans to expand its UK portfolio to 40 sites by 2012.

Go Ape hopes to open three new courses in the US, while planning permission is now being sought for a first site in Australia, with plans for a further 15 in the pipeline.

The Go Ape business is owned by ex-army officer Tristram Mayhew, who launched the venture with his wife Rebecca in 2002.

Paul Rossiter, financial director of Adventure Forest, said: "Our aim is to expand to 70



Go Ape is looking to grow into Australia and the US

courses in the United States and we have entered into an agreement with an American business partner to that end.

"In Australia, we are seeking planning permission for our first course and are looking to have 15 or so in all," he added.

- Arts & Business +44 (0)20 7378 8143
www.aandb.org.uk
- ALVA +44 (0)20 7222 1728
www.alva.org.uk
- Arts Council +44 (0)20 7333 0100
www.artscouncil.org.uk
- ASVA +44 (0)1786 475152
www.asva.co.uk
- BALPPA +44 (0)20 7403 4455
www.balppa.org
- BHA +44 (0)845 880 7744
www.bha-online.org.uk
- BICM +44 (0)845 217 1811
www.bicm.co.uk
- BiSL +44 (0)20 8780 2377
www.bisl.org
- CCPR +44 (0)20 7976 3900
www.ccpr.org.uk
- CMAE +44 (0)1334 460 850
www.cmaeurope.org
- Countryside Agency +44 (0)1242 521381
www.countryside.gov.uk
- CPRE +44 (0)20 7981 2800
www.cpre.org.uk
- English Heritage +44 (0)870 333 1181
www.english-heritage.org.uk
- FSPA +44 (0)2476 414999
www.sportsandplay.com
- FIA +44 (0)20 7420 8560
www.fia.org.uk
- HHA +44 (0)20 7259 5688
www.hha.org.uk
- IAAPA +1 703 836 4800
www.iaapa.org
- IEAP +44 (0)1403 265 988
www.ieap.co.uk
- Institute of Hospitality +44 (0)20 8661 4900
www.instituteofhospitality.org.uk
- ISPAL +44 (0)845 603 8734
www.ispal.org.uk
- LPF +44 (0)1462 471932
www.leisureprop.com
- LMCA +44 (0)1278 436910
www.lmca.info
- MLA +44 (0)20 7273 1444
www.mla.gov.uk
- NPFA +44 (0)20 7833 5360
www.playing-fields.com
- People 1st +44 (0)870 060 2550
www.people1st.co.uk
- REPs +44 (0)20 8686 6464
www.exerciseregister.org
- SAPCA +44 (0)24 7641 6316
www.sapca.org.uk
- Sports Aid +44 (0)20 7273 1975
www.sportsaid.org.uk
- Sport England +44 (0)8458 508 508
www.sportengland.org
- Springboard +44 (0)20 7497 8654
www.springboarduk.org.uk
- SkillsActive +44 (0)20 7632 2000
www.skillsactive.com
- Tourism Management Institute +44 (0)1926 641506
www.tmi.org.uk
- Tourism Society +44 (0)20 8661 4636
www.tourismsociety.org
- VisitBritain +44 (0)20 7578 1000
www.visitbritain.com
- World Leisure +1 250 497 6578
www.worldleisure.org