

## £15.7m regional football centre unveiled in Scotland

By **Tom Walker**

Scotland's first regional football centre has opened to the public in the Glasgow district of Toryglen.

The £15.7m centre houses the region's first full-size indoor synthetic pitch built to FIFA's 2 Star standards and can accommodate 700 spectators.

Other facilities include three full-size, outdoor synthetic pitches; a full-size grass pitch; 13 seven-a-side pitches; a strength and conditioning zone; a players' lounge and rest area; café; and a briefing room with video analysis equipment.

Toryglen will act as the new home of the Scottish Women's



**The new indoor synthetic pitch is the first of its kind in the region**

Football Association and will also host full national team training sessions.

The centre will be operated by leisure trust Culture and

Sport Glasgow on behalf of Glasgow City Council.

Councillor Steven Purcell said: "The opening of this centre is a first for Glasgow and

indeed Scotland. The Council's investment in Toryglen is a clear indicator of our determination to provide world-class sporting venues in the city as we move towards the Commonwealth Games in 2014.

"I'm especially pleased that the facility will be widely used across the community as well as by professional footballers.

"It is my hope that, by working with a range of partners, including sportscotland and the Scottish Football Association, we will ensure this facility continues to make a positive contribution to the development of football and healthier living in general for everyone in Glasgow."

## London's new £4.5m 'green' sports complex opens

IFI-accredited Little Venice facility incorporates a range of eco-friendly measures

By **Pete Hayman**

A new £4.5m sports and community complex, which has been designed to incorporate a number of environmentally friendly features, has opened to the public in west London.

Little Venice Sports Centre on Crompton Street, which is the only venue in the area to be accredited by the Inclusive Fitness Initiative (IFI), includes four badminton courts, a large sports hall with underfloor heating and a multi-purpose dance and exercise studio.



**The centre features a sedum roof to absorb carbon dioxide**

Designed by LCE Architects, the 1,800sq m (19,375sq ft) facility also features a 30-station fitness suite equipped by

Matrix Fitness Systems and an IT training suite, which will house the Centre of Excellence for Physical Activity – part of the National Skills Academy for Sport and Active Leisure.

Westminster Council's Go Green board helped to plan the new complex, which boasts a sedum roof to absorb carbon dioxide and improve temperatures inside the venue.

Rooftop wind catchers will contribute towards ventilation at the site, while six large solar panels will reduce carbon emissions by 3.8 tonnes a year.

### New gym opens at Thirsk pool

A new gym has opened at Thirsk Swimming Pool in North Yorkshire, following a £600,000 renovation.

The facility has been equipped by Life Fitness and is complemented by new changing rooms.

Hambleton District Council's cabinet member for health, Ralph Andrew, said: "The gym has been completed ahead of schedule allowing the contractors, Foden Spence, to focus on other aspects of the development."

## CONTACTS

**THE LEISURE MEDIA COMPANY**

Portmill House, Portmill Lane,  
Hitchin, Herts SG5 1DJ, UK  
Tel: +44 (0)1462 431385  
Fax: +44 (0)1462 433909  
e-mail: please use contacts'  
fullname@leisuremedia.com

**Subscriptions**

**Julie Albone** 01462 471915  
subs@leisuremedia.com

**Editor**

**Liz Terry** 01462 431385

**Managing Editor**

**Tom Walker** 01462 471934

**Journalists**

**Pete Hayman** 01462 471938

**Helen Patenall** 01462 471934

**Sarah Todd** 01462 471927

**Martin Nash** 01462 471933

**Designer**

**Ed Gallagher** 01905 20198

**Internet**

**Dean Fox** 01462 471900

**Tim Nash** 01462 471917

**Sales Team Manager**

**Annie Lovell** 01462 471901

**Account Managers**

Recruitment, training, tenders

**Paul Thorman** 01462 471904

**Simon Hinksman** 01462 471 905

**Anthony Ward** 01462 471 914

**Julie Willmott** 01462 471 916

**Emma Matthews** 01462 471907

**Property desk**

**Simon Hinksman** 01462 471 905

**Spa Opportunities**

**Emma Matthews** 01462 471907

**Financial Controller**

**Sue Davis** 01395 519398

**Financial Administrator**

**Denise Gildea** 01462 471930

**Circulation Manager**

**Michael Emmerson** 01462 471932

To subscribe to Leisure Opportunities, log on to [www.leisuresubs.com](http://www.leisuresubs.com) email: subs@leisuremedia.com tel +44 (0)1462 471913 fax +44 (0)1462 433909. Annual subscription rates are UK £31, Europe £41, Rest of world £62, students UK £16. Leisure Opportunities is published fortnightly by The Leisure Media Company Limited, Portmill House, Portmill Lane, Hitchin, Herts SG5 1DJ, UK and is distributed in the USA by SPP, 75 Aberdeen Road, Emigsville, PA 17318-0437. Periodicals postage paid @ Manchester, PA POSTMASTER Send US address changes to Leisure Opportunities, c/o PO Box 437, Emigsville, PA 17318-0437.

The views expressed in print are those of the author and do not necessarily represent those of the publisher The Leisure Media Company Limited. All rights reserved. No part of this publication may be reproduced, stored in a retrieval system or transmitted in any form or by means, electronic, mechanical, photocopying, recorded or otherwise without the prior permission of the copyright holder. Printed by Warners Midland plc.

©The Leisure Media Company Limited 2009  
ISSN 0952/8210

## New concert hall plans for Birmingham

Proposals include 450-seat auditorium to cater for wide range of performances

By **Pete Hayman**

A new multi-million pound concert hall is to be built at the University of Birmingham (UB) to house the institution's music department, as well as facilities for local community users.

Glenn Howells Architects' plans for the scheme include a 450-seat auditorium designed to cater for a range of performances – from solo voice to electro-acoustic – along with associated research, teaching and rehearsal facilities.

The venue will include new music rooms for the Centre of Early Music Performance and Research, providing temperature and humidity-controlled spaces for the university's collection of original and reproduction instruments dating back to the Middle Ages.



The new concert hall will house the university's music department

A public fundraising campaign will be launched in the autumn in a bid to reach a target of £5m. A total of £3.6m has already been raised through contributions from university alumni and supporters of the concert hall scheme.

Professor John Whiteham, head of UB's music department,

said: "The auditorium will provide a wonderful space in which the university's rehearsals and concerts can take place. It will be unique in Birmingham in its size, adaptability and capacity, and will provide facilities from which not only the university but also the local community users can benefit."

## LDA publishes tourism action plan for 2012 Games

By **Helen Patenall**

The London Development Agency's (LDA) strategy to attract international travellers to the capital up to and during the 2012 Olympic Games has been detailed in the publication of the *London Tourism Action Plan 2009-13*.

Priorities include sustaining job opportunities and improving customer service standards in the tourism industry through the London Employer Accord partnership, the Olympic Park Events Plan and the LDA's £2m global marketing campaign, Only in London.

In addition, 12,000 Host City Volunteers will be recruited to welcome visitors at transport hubs and attractions, while a guidebook will be published to aid disabled visitors.



The LDA aims to attract overseas visitors in the lead up to 2012

London mayor Boris Johnson will also support bids to attract major events, such as the 2015 Rugby World Cup and the 2018 FIFA World Cup, to the capital.

Johnson said: "In 2012, London will welcome thousands of visitors and it is essential that the capital gives them, and the millions who come before and after the

London Games, an unforgettable experience.

"We must continue to develop London's tourism offer and work closely together to ensure that visitors, particularly our 2012 guests, have a great time. I want visitors to London not only to return home telling all their friends and relatives about our wonderful capital."



## Government backs Dundee's V&A scheme

Scottish Parliament agrees to provide funding towards construction of new museum

By **Pete Hayman**

Plans to establish a sister site to London's Victoria and Albert Museum (V&A) as part of a new waterfront development in Dundee have been backed by the Scottish Government.

Culture minister Michael Russell revealed that the government will help to fund the construction of a new building for the museum and ongoing financial support once budgets are set in the next strategic spending review.

It is expected that the V&A at Dundee facility will house contemporary collections from the main London site, provide a showcase for Scottish applied arts and design and create a large gallery space capable of accommodating international touring exhibitions.



The Scottish Government is backing the V&A at Dundee proposals

A V&A Project Steering Group, comprising Dundee City Council, Scottish Enterprise, the University of Dundee and University of Abertay and the V&A, is expected to name its preferred location for the new museum in October, before a fundraising campaign and a design competition is launched.

Russell said: "Dundee has made huge strides in recent years and I've been struck by the approach to regeneration work in the city. This could be a dramatic new chapter in the life of Dundee to position the city as an international art destination and a thriving centre for our creative industries."

## Arts organisations net £2.7m Sustain funding

By **Pete Hayman**

Arts Council England (ACE) has unveiled details of the arts organisations that will receive a share of £2.7m as part of the Sustain initiative, which aims to maintain artistic excellence during the recession.

Eight organisations across the country have been successful in their bid to secure support as part of the £40m Sustain fund, which was launched by ACE in April to provide a one-off grant to cover a two-year period between 2009 and 2011.



Modern Art Oxford will receive £630,000 to help meet shortfalls

The latest grants will see the Philharmonia Orchestra in London receive £760,000, while the London Symphony Orchestra will net £600,000

and £630,000 has been set aside for Modern Art Oxford.

Birmingham Opera Company (£120,000), the City of London Festival (£300,000), the Buxton Festival (£100,000) and Deda in Derby (£91,742) have been awarded grants, as well as Project Art Works in Hastings (£89,937).

ACE chief executive Alan Davey said: "Audiences want to see adventurous art and, in making these Sustain awards, we're enabling artists throughout the country to go on producing just that, despite the tough times."

### IN THIS ISSUE

#### 04 HEALTH & FITNESS

- ▶ Life Centre plans approved
- ▶ Burnham unveils strategy

#### 06 ATTRACTIONS

- ▶ 4D cinema for London Eye
- ▶ Morecambe plans move on

#### 08 SPORT

- ▶ THFC nets £15m for stadium
- ▶ New Aberdeen venue opens

#### 10 COMMERCIAL

- ▶ BFI to merge with UKFC?
- ▶ Regal to reopen in 2010

#### 12 HOSPITALITY

- ▶ Aqua moves into London
- ▶ 'Pod' hotel for Trocadero?

#### 14 PARKS & COUNTRYSIDE

- ▶ Green light for Brockholes
- ▶ New National Parks scheme

#### 16 TOURISM

- ▶ Welsh fears over tax breaks
- ▶ UK launch for Greyhound

#### 17 PROPERTY/TENDERS

#### 18 PROPERTY

- ▶ SWFC unveils ground plans
- ▶ Belfast scheme concerns

#### 21 TRAINING

- ▶ New NSA for the Outdoors
- ▶ Bolton lifeguard initiative

#### 22 TRAINING DIRECTORY

#### 25 JOBS

THE LEISURE MEDIA COMPANY PUBLISHES



## IN BRIEF

### New gym for Bridgend Recreation Centre

► Bridgend Recreation Centre in Wales has reopened following a £300,000 refurbishment. The centre's health and fitness amenities have been upgraded and features a new suite supplied by Technogym. A new changing village has also been added while existing pool facilities have also received a facelift. The works were funded partly by a £185,000 grant from the Sports Council of Wales.

### January opening for Darwen facility

► The new £12m Darwen Leisure Centre will open to the public in January 2010, a month later than originally planned. The centre will feature a 80-station health and fitness club, a multi-use sports hall, 25m swimming pool with a moveable floor, spectator seating, café and changing facilities. The centre is being built on the site of the old Darwen Leisure Centre, which was demolished last year to make space for the new development. Plans for the centre were approved last year by Blackburn with Darwen Borough Council. Sport England is contributing £400,000 to the project to fund the moveable floor, while the council will fund the rest.

### Funding issues for Penwortham centre

► Penwortham Leisure Centre in Lancashire is under threat of closure unless the town, district and county councils can agree on how best to source the £750,000 investment required to the update the facility. Plans to construct floodlit tennis and netball facilities require a financial commitment that neither South Ribble Council, Lancashire County Council nor Penwortham Town Council is willing to fully commit.

## £46.5m Life Centre scheme approved

Facilities to include a 150-station health club and Olympic-size swimming pool

By **Pete Hayman**

Plans for the construction of a new £46.5m regional sports and leisure centre in Plymouth, Devon, have been given the green light by planners at Plymouth City Council (PCC).

The new Life Centre will include a 150-station health and fitness club, multi-purpose areas for dance and martial arts, a youth gym, a sauna and a steamroom as well as a 10-lane, 50m swimming pool with moveable floors.

Facilities will also include a family leisure pool with flumes, beach entry and a bubble pool, a climbing zone with a 15m (49.2ft) wall and aerial assault course, an eight-lane bowls centre and a 12-court multi-use sports hall.

Located in the city's Central Park, the Life Centre - which will replace the Mayflower Centre - will boast a café and



Construction on the new centre is set to begin later this year

foyer area for park users, while a transport hub will provide facilities for bus passengers, pedestrians and cyclists.

Funding for the project has been secured from a number of sources, including £2.5m from the University of Plymouth, while PCC will finance the majority of the cost through capital receipts gained from the sale of the council's assets. Designs for the Life

Centre have been drawn up by Archial in conjunction with engineering consultants Arup following consultation with a range of stakeholders, including Sport England, local sports associations and the University of Plymouth.

A contractor is expected to be appointed in November to deliver the new Life Centre, which is scheduled to open in September 2011.

### Elixia clubs for Holmes Place

UK-based health club operator Holmes Place has acquired the Austrian Elixia chain of clubs.

The deal will see Holmes Place take control of Elixia's two clubs in Vienna and will bring the group's Austrian portfolio to six fitness clubs.

Doron Dickman, Holmes Place CEO for Europe, said: "Our 'one life, live it well' philosophy and the 'vitality' concept of Elixia have attracted a very similar type of member, one who is primarily looking for a quality club with top-end fitness facilities."

## Gym opened at Dorothy Hyman

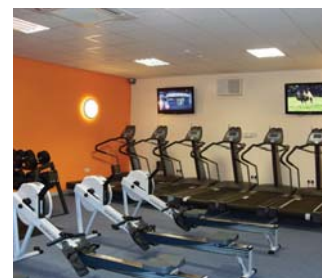
By **Tom Walker**

Barnsley Premier Leisure (BPL) has reopened the Dorothy Hyman Sports Centre in Cudworth, Yorkshire, following a £400,000 refurbishment.

Work at the centre included the creation of a new 50-station health and fitness club, spread across two levels, and the refurbishment of the 400m running track.

BPL invested £100,000 in the redevelopment, with Coalfields Regeneration Trust providing the remaining £300,000.

Steve Roberts, head of business development at BPL, said: "The launch of the new facilities are part of helping people in the local community



The new 50-station fitness suite at the leisure centre

to get fit and to enjoy healthier lifestyles.

"As obesity levels in Barnsley are higher than the national average, it is really important that people have access to good quality facilities which are conveniently located."

BPL currently operates 11 sites on behalf of local councils.



## Burnham unveils physical activity plans

Government aims to make British people the most physically active in Europe

By **Pete Hayman**

Health secretary Andy Burnham has announced details of new sports and physical activity schemes that will form part of the government's vision to improve fitness levels throughout the UK.

In a speech to industry representatives at the Willesden Sports Centre in London on 13 August, Burnham identified four key aims as part of the government's ambitions to establish Britain as one of the healthiest and most active nations in Europe. With more than 2.5 million people currently on incapacity benefits costing the economy £13bn and companies £11bn each year, one of the main targets



**Burnham made the speech during a visit to Willesden last month**

for the government is to use the National Health Service (NHS) to take a more proactive role in the promotion of healthy lifestyles.

Burnham said: "We need an ambition for physical activity commensurate with the

ambition we've already shown in hosting this decade of sport.

"Just as five years ago, we set ourselves the target of coming fourth in the 2012 Olympic medal tables, now I want us to aspire to fourth place in the physical activity league tables."

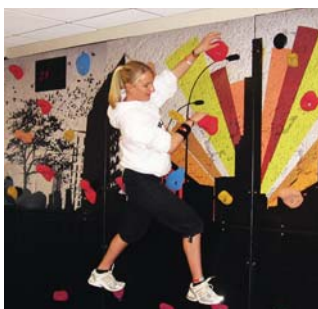
## Shavington revamp to be completed by next month

By **Tom Walker**

Construction of a new fitness facility at Shavington Leisure Centre in Cheshire is due to be completed by October.

The Everybody Interactive facility will feature a vertical traverse climbing wall, multi-player dance mat systems and balance boards, with equipment supplied by Shokk.

The existing Everybody fitness suite and reception area will also be improved and a



**Facilities include a climbing wall**

new lift installed. Andrew Knowles, portfolio holder for health and wellbeing at

Cheshire East Council (CEC), said: "For some the traditional gym is not enough to encourage them to get active and exercise. It could be that they lack the incentive or feel their fitness levels are not up to those of dedicated gym users and they need an area to kickstart their exercise regime."

The project is being funded by CEC, Waste Recycling Group, Central and Eastern Cheshire Primary Care Trust and Cheshire Fire Brigade.

## Franchisee opens second Curves site in Edinburgh

Women-only health club chain, Curves, has secured a new 2,000sq ft (185.5sq m) club in Musselburgh, near Edinburgh, Scotland.

The club will be operated on a franchise deal by Musselburgh Leisure, which has secured a 10-year lease at the Harbour Point mixed-use development. Musselburgh Leisure's Gary Eaton,

who already operates another Curves gym in Gorgie, Edinburgh, said: "We've been unsuccessfully looking for premises in Musselburgh for the last year and are delighted to have secured these premises in an ideal location."

The US-based Curves portfolio currently includes 10,000 branches in 60 countries.



**leisure media  
STUDIO**

### Industry-leading marketing and design services

With more than 30 years' experience, **leisure media studio** will work with you to create bespoke print and web solutions to power your marketing

- ▶ Web design
- ▶ Email marketing
- ▶ Contract publishing
- ▶ Graphic design
- ▶ Digital turning pages
- ▶ Image retouching
- ▶ Illustration
- ▶ Advertising design
- ▶ Direct mail
- ▶ Print

LET US QUOTE YOU

**Contact Tim Nash**  
Tel +44 (0)1462 471917  
[timnash@leisuremedia.com](mailto:timnash@leisuremedia.com)

## IN BRIEF

**Nick Varney to speak at VAC2009**

► Nick Varney, chief executive of the Merlin Entertainments Group, will give a keynote speech at this year's Annual National Conference of Visitor Attractions (VAC2009). The theme for this year's conference – Challenges make Champions – will examine how the most successful attractions survive and thrive during challenging times. The one-day conference on 7 October will be held at the Queen Elizabeth II Conference Centre in Westminster, London.

**Paulton's rides 'have no permission'**

► Paulton's Park in Hampshire has allegedly been operating two rides without planning consent. The attraction has been in talks with the New Forest National Parks Authority regarding six rides installed within the last four years. Permission is being sought for the Edge and Cobra rides within its permitted Country Park, which has been used for less than 10 years as a theme park and requires separate consent, although the park said that four other rides are covered by a Lawful Development Certificate for the area open to visitors since 1983.

**Tennyson museum opens on Isle of Wight**

► A museum celebrating the life and times of British poet Alfred Tennyson has opened at his former home on the Isle of Wight. Present owners Martin Beisly, a senior expert on Victorian painting at Christie's auction house, and Rebecca Fitzgerald have reopened Farringford House to the public following a three-year upgrade. Guests can now reside in the revamped accommodation wing, while visitors can join weekly guided tours of the house.

## Merlin unveils London Eye 4D cinema

New pre-flight cinematic experience created at rebranded South Bank attraction

By **Pete Hayman**

Attractions operator Merlin Entertainments has unveiled the second stage of a £17.5m scheme to upgrade the London Eye over the next three years.

A new £5m purpose-built 4D cinema has been created at the South Bank attraction, which will now be known as the Merlin Entertainments London Eye as part of a new brand identity for the landmark.

The pre-flight cinematic experience will provide visitors with a chance to view aerial footage of the London Eye, combined with 3D technology and 4D sensory effects, such as wind, snow and smells, before going on their actual journey.

In addition to the new cinema, the London Eye's ticket hall and information areas have also been revamped. This follows the news earlier this year



**Aerial footage and 4D sensory effects form part of the experience**

that Merlin is investing £12.5m ahead of the 2012 Olympics on upgrading the attraction's capsules to improve comfort and visitor experience.

Design architect was Kay Elliot and construction work was led by Collins Construction, while the 4D film was developed at Pinewood Shepperton studios by Centre Screen Productions in association with

3D Pablo Post and Principal Large Format. The scheme also involved Merlin Studios, Merlin's creative hub.

Merlin chief executive officer, Nick Varney, said: "The new 4D cinema, and other changes will provide an even more exciting experience, not just for first time visitors, but to encourage others to come back and 'fly' the Eye again."

## Eric Morecambe plans progress

By **Pete Hayman**

A new exhibition dedicated to the life of Eric Morecambe has moved a step closer after the Northwest Regional Development Agency (NWDA) agreed to part-fund a feasibility study into the proposals.

The study will consider the long-term sustainability of such an attraction in Morecambe, Lancashire, as well as identifying funding sources and private sector partners to help the scheme become a reality.

Mark Bushell, spokesperson for the consortium behind the plans, said: "Eric was a comedy genius and the collections of the Eric Morecambe estate help to explain how this region helped to shape the man.



**Eric Morecambe remains one of the UK's most iconic comics**

"Along with his statue, this exhibition has the potential to attract visitors of all ages and to introduce his legacy to a new generation of fans."

Steven Broomhead, NWDA chief executive, added: "Eric Morecambe was a British icon and we know that his statue on Morecambe Promenade is a great attraction for his fans."

## Peter Pan plans remain 'on track'

Plans for the redevelopment of Moat Brae House in Dumfries, which provided the inspiration for Peter Pan, remain 'on track', according to the Loreburn Housing Association (LHA).

The association had planned to demolish parts of the house in danger of "imminent collapse" as part of a wider scheme to establish a new Peter Pan visitor centre and sheltered accommodation for the elderly.

However, the proposals met with opposition from the Peter Pan Moat Brae Trust, which disputes claims the building poses a danger to the public.

The trust is now seeking to acquire the property in order to restore the house and gardens for public use.





**VAC 2009**  
**THE ANNUAL**  
**NATIONAL CONFERENCE**  
**OF VISITOR ATTRACTIONS**  
**WEDNESDAY 7 OCTOBER 2009**

**Where?** The QEII Conference Centre, London.

**Who?** You, if you are an owner, manager or marketer of a visitor attraction, an opinion former, a tourism or heritage professional.

**Why?** Never have Britain's Visitor Attractions faced more challenging trading conditions. But "Challenges make Champions" – and we will be examining what the best do to survive and thrive, and learning from Attractions that have made exceptional gains. Evaluate your strategies to stay one step ahead. This is your conference – organised on a not-for-profit basis by the industry. Come and exchange ideas and information with fellow Delegates and question industry leaders.

**BOOK NOW!**

Please log onto the official VAC 2009 website to register for the conference

**[www.vac2009.co.uk](http://www.vac2009.co.uk)**

Early bird and multiple booking discount registration rates will apply.

**Early Booking Deadline 6 August 2009!**

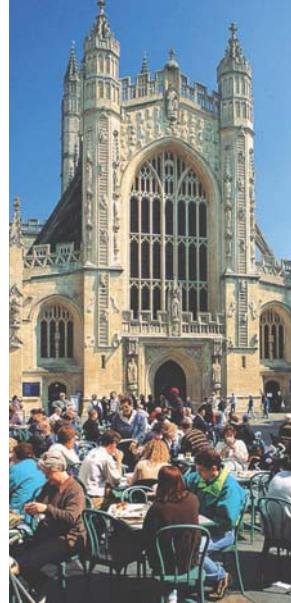
SUPPORTING SPONSORS

**FARRER & Co** **bdrc**<sup>®</sup>

OFFICIAL PUBLICATION

**Attractions**  
**management**

Supported by



## IN BRIEF

### £12m facility planned for Birmingham

► A £12m leisure centre is being planned for Birmingham, according to the *Birmingham Mail*. The new centre will be built on the site of the existing Harborne Pool and Fitness Centre, which will close in February 2010 and be demolished in March. The facility, the first to be built in the city for more than 20 years, will feature a 25m swimming pool, a learner pool, junior and adult fitness suites and a dance studio. Plans have been submitted with a view to start work next June and be completed by late 2011.

### Charnwood revamp nearing completion

► A £3.1m project to transform South Charnwood Swimming Pool in Leicestershire into a leisure centre is nearing completion. New facilities will include a gym and a dance studio, changing rooms and additional car parking. The development is expected to open ahead of schedule in early September, according to contractor G F Tomlinson.

### Local councils rapped by DCSF over leisure

► The Department for Children, Schools and Families (DCSF) has urged all local authorities to ensure that young people are made aware of the activities available to them in their area. Between 2008 and 2011, £900m will be invested in activities, including £270m for myplace youth centres. But research has revealed that young people are unaware of what is being offered. The DCSF's *Positive Activities Qualitative Research with Young People* study also revealed that young people believe activities are reserved for sporty children, while peer pressure and low confidence levels are an issue.

## THFC secures £15m for new stadium

Cash raised through share placing to be used to develop a full planning application

By Pete Hayman

Tottenham Hotspur Football Club's (THFC) plans to develop a new 58,000-seat stadium in north London have received a boost after the club raised £15m through a share placing.

In a statement to the London Stock Exchange on 21 August, the Premier League club said that the cash will be used to fund the submission of a full planning application for the new venue later this year.

A spokesperson for the club said: "During the past two years, the company has engaged a full time team of experts and consultants to progress the development of the proposed new stadium. The company is making solid



The new stadium will replace THFC's existing 36,000-seat ground

progress with regard to submitting a full planning application which it expects to submit later this year."

Plans for the new stadium drawn up by KSS Group include a new public square designed by Martha Schwartz Partners

with a dedicated space for community events, while a smaller, quieter space will offer an area for people to relax.

A club museum, a new base for the Tottenham Hotspur Foundation, and a hotel also form part of the proposals.

## Government announces new free swimming push

By Pete Hayman

The Department for Culture, Media and Sport (DCMS) has given all English local authorities a fresh chance to take advantage of the government's £140m free swimming initiative.

More than four million free swims have been taken since the scheme's April launch, with 259 councils providing free swimming for senior citizens. A further 190 also offer free swimming to young people.



DCMS grants are still available

Culture secretary Ben Bradshaw has now encouraged those local authorities not

currently offering free swimming for people under 16 years old, as well as the 67 councils that are not taking part at all, to apply for up to £1m of unallocated funding to extend the scheme further.

In addition, local authorities offering free swimming for both senior citizens and young people will be able to apply for a share of the £25m Capital Modernisation Fund in 2010-11 to help build new, or significantly refurbish, pool facilities.

### Celtic chief issues television cash warning

John Reid, chair of Glasgow Celtic Football Club, has warned that the recent collapse of Irish sports broadcaster Setanta has left many Scottish clubs facing increased financial uncertainty.

In the club's preliminary results for the year ending 30 June 2009, Reid claimed that clubs are "now edging along the narrow line of solvency" following the demise of Setanta, which had held the broadcasting rights for the Scottish Premier League (SPL).

SPL officials have now been forced to agree a reduced deal with Sky and US-based ESPN – a deal Reid believes should have been sought at the time of the original negotiations last summer.



## £28m Aberdeen Sports Village opens

New multi-purpose development boasts indoor athletics and 3G football facilities

By **Pete Hayman**

A new 17,000sq ft (1,579sq m) sports complex has opened its doors to the public in Aberdeen, north east Scotland, on the site of the city's former Chris Anderson Stadium.

The £28m Aberdeen Sports Village – the result of a joint venture between Aberdeen City Council, the University of Aberdeen and sportscotland – aims to provide high quality sports provision in one location.

Facilities at the complex include an indoor, 3G football pitch – the first of its kind in the UK and created in part from recycled car tyres – as well as a sports hall with sprung timber flooring, space for nine badminton courts and seating for 350 spectators.



The venue boasts an indoor running straight with jumping areas

The complex also boasts a 135m, six-lane running straight with areas for throwing and jumping events and the 820 sq m (8,826ft) Energy Zone, with 75 stations of cv equipment, 30 resistance machines, a Fitlinxx management system and a dedicated free weights area.

Aberdeen Sports Village, which includes sports science facilities, a café and a crèche, was designed by Edinburgh-based Reiach and Hall Architects and built by Barr Construction. The complex has also been included as a training venue for the 2012 Olympics.

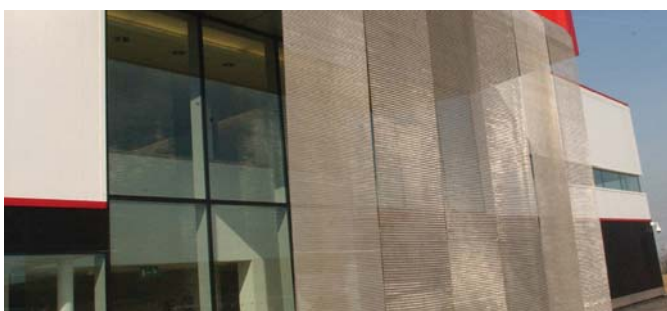
### WKF chief faces resignation call

Antonio Espinos, the president of the World Karate Federation (WKF), has been urged to resign immediately after the sport failed in its bid to be included as an event at the 2016 Olympic Games.

According to the UK's National Association of Karate and Martial Arts Schools, non-inclusive rules imposed by the international governing body was a key reason for karate being overlooked.

The association's chair, Joe Ellis, said that a complete management overhaul was needed at the WKF, including the resignation of Espinos, in order to bring about fresh leadership to help raise the sport's global profile.

## British Judo unveils Kent facility



It is hoped the sport will benefit from a centralised training venue

By **Pete Hayman**

A new centralised training centre, designed to help judo players prepare for the London 2012 Olympic and Paralympic Games, has been unveiled by the British Judo Association in Dartford, Kent.

The British Judo Performance Institute is housed within the £4.5m purpose-built Dartford Judo Club, which opened in 2006, and will incorporate a

full-time training facility for Britain's elite judoka and the association's coaching and performance teams, as well as medical staff.

It is hoped that the new centralised institute will enable British Judo to meet its target of three medals at the 2012 London Games, while also providing a legacy for the sport through the development of elite performers leading up to the 2016 Games and beyond.

### IN BRIEF

#### Work begins on Warriors Swim Centre

► Work has started on the transformation the Warriors Swim Centre in Southend, Essex, into a specialist swimming and diving centre. Ipswich-based ISG Jackson has been appointed to construct the new centre, which will be built at Garon Park. The centre will include an eight-lane, 25m pool with seating for 450 spectators. An international-standard diving pool, a learner pool and a dry diving training area with harnesses and trampolines will also be included.

#### Alloa Athletic FC to acquire leisure centre

► Alloa Athletic Football Club (AAFC) is poised to acquire the town's former Zones Leisure Centre after agreeing a deal with Clackmannanshire Council. The Scottish Second Division club plans to invest up to £450,000 in the refurbishment of outdoor pitches and installing improved playing surfaces in the centre's main sports hall, while changing rooms and reception areas will also be upgraded. AAFC's plans will also see the centre offer a 50 per cent subsidy on its prices up to a total of £40,000 a year for a range of user groups that will benefit from increased access to leisure provision.

#### Work starts on Ipswich pool revamp

► Work has started on a £479,000 scheme to refurbish the Fore Street Pool in Ipswich, Suffolk, as part of Ipswich Borough Council's (IBC) £4m investment in local facilities. The 114-year-old pool, which is one of the oldest operating venues in the country, will benefit from new floors in the changing rooms, new lighting and vending facilities and a complete redecoration of the building's interior and exterior.

## IN BRIEF

### Barnstaple mixed-use scheme on hold

► North Devon Council (NDC) has put on hold proposals to develop a mixed-use scheme in Barnstaple. The recent downturn in the housing market and uncertainty in the high street among national retailers has made the project unfeasible during the current recession. Redevelopment of the 12-acre (4.9-hectare) site by Wilson Bowden and architects Benoy to provide new eating outlets and family oriented entertainment facilities, such as a multiplex cinema, a bowling alley or a bingo hall, will be reviewed when the economy shows signs of improvement. NDC leader Des Brailey said: "Our aim is still to see a flagship redevelopment on the site but now is not the right time. There simply isn't the money out there to fund it."

### Cineworld reports first-half profits boost

► Increased attendance levels driven by blockbusters, such as *Slumdog Millionaire*, has contributed towards a 12.8 per cent increase in Cineworld's operating profits for the first half of the year. The cinema operator also revealed plans to open two new cinemas – a five-screen venue in Witney, Oxfordshire, and a 10-screen facility in Aberdeen – in the second half of 2009 after reporting an 18.2 per cent increase in revenue. According to Cineworld's chief executive, Stephen Wiener, the company's investment in digital and 3D technologies is also starting to deliver strong results, with a number of 3D films set for release before the end of the year. Wiener said: "Our digital investment is already bearing fruit and, while it is still early days, the return on investment so far has been encouraging."

## DCMS proposes film bodies' merger

New organisation to provide 'better support and promotion' for the UK's industry

By **Pete Hayman**

The UK Film Council (UKFC) and the British Film Institute (BFI) could be merged into one single organisation as part of proposals unveiled by the Department for Culture, Media and Sport (DCMS).

Film minister Siôn Simon announced the plans, which would result in a streamlined body that would be able to increase investment in film and services rather than infrastructure, and provide better support and promotion for the UK film industry.

The remit of both the UKFC and BFI would not be altered as a result of the merger, which would also include guiding the film industry through a transition to digital technologies and the preservation of UK film heritage.

Simon said: "Supporting film to help the UK industry reach



The British Film Institute owns an IMAX cinema in central London

its international potential as an art form as well as a business remains a priority for government. That's why we want to look at how best to direct our support.

"There are practical issues which we need to resolve to ensure that this proposed merger brings about the benefits we want without impacting on the work currently done by the BFI and

UKFC. DCMS will now work closely with both BFI and the UKFC to deliver a better service for film."

A project board incorporating representatives from the DCMS, UKFC and BFI will now meet to examine the proposals and to develop a new structure for the governance of the new organisation. It is expected that the board will complete its work by the end of the year.

### Tories plan hike in alcohol tax

The Conservative Party has pledged to significantly increase taxes on alcopops, strong lagers and ciders as part of new measures to crack down on alcohol-related crime.

According to the *Daily Mail*, the party is planning "radical" changes to the Licensing Act, which could see an extra £1.30 to the cost of extra strong lager and an additional 50p on a bottle of alcopops.

Conservative leader David Cameron said that 90 per cent of alcohol consumed in Britain would remain unaffected by the new measures.

## Regal Cinema to reopen in 2010

By **Pete Hayman**

A historic art deco cinema in Evesham, Worcestershire, is set to reopen next year following the completion of a five-year scheme to restore the Grade II-listed property.

In January, Wychavon District Council contributed a loan of £150,000 towards the restoration of the Regal Cinema, which will provide the town with a 300-seat single-screen facility featuring enhancements to original 1930s features.

The ground level of the venue will boast a bar area incorporating 100 seats arranged around candle-lit tables, function rooms, a coffee shop and a rooftop restaurant,



The Regal Cinema will offer a 300-seat, single-screen venue

and it is expected that the cinema will screen a wide range of films, as well as live sports feeds and live music.

Designs for the new-look Regal Cinema were drawn up by Worcester-based Zebra Architects alongside Latter Ramsay Consultants and interior designers Cocoa and Lace.





# the changing face of leisure

Show your face at the UK's largest leisure event. Leisure Industry Week puts you in front of all the key industry suppliers plus a host of new live demos, educational events and networking opportunities. Visit [www.liw.co.uk](http://www.liw.co.uk) for the full programme of events.

**Face to face with the leisure industry**

**LEISURE INDUSTRY WEEK 22-24 Sept 2009 NEC Birmingham UK**



Register now at [www.liw.co.uk](http://www.liw.co.uk)



## IN BRIEF

### IHG profits hit by global RevPAR decline

► InterContinental Hotels Group (IHG), which operates the Holiday Inn and Crowne Plaza chains, has reported a 38 per cent slump in operating profits for the six months ending 30 June 2009. The company currently operates more than 4,300 hotels across the world after increasing its portfolio by 117 properties during the first half of the year, but it has been hit by a 16.2 per cent decline in global RevPAR during the period.

### PGL acquires Swindon venue in £10m deal

► Children's activity holiday provider PGL has acquired The Liddington hotel and conference centre near Swindon, Wiltshire in a deal worth around £10m. The 192-bedroom hotel is set in 150 acres and facilities include 45 meeting and conference rooms, an outdoor sports pavilion and a restaurant. PGL plans to transform the site into one of its activity centres, which will offer children adventure breaks and will add to the group's existing portfolio of 18 activity centres in the UK, as well as eight further sites in France and one in Spain.

### Akbars to open new Birmingham restaurant

► Akbars, the Yorkshire-based Indian restaurant chain, is set to open a new 300-capacity property in Edgbaston, Birmingham, on 24 September as part of the company's plans to extend its portfolio. Law firm Gordons has been advising the company on the acquisition of the Hagley Road venue, which will also boast a 200-guest capacity private function suite and is expected to be followed by the opening of another 300-seat restaurant in Newcastle upon Tyne in January 2010.

## London restaurants resist downturn

Restaurant closures at nine-year low while 121 new eateries opened during the year

By **Pete Hayman**

Restaurants in London are failing at the lowest rate for nearly a decade.

According to the latest *Harden's London Restaurants* guide, a mere 64 restaurants and eateries across the capital closed during the 12 months to mid-2009 – a decrease of seven compared with the previous year and the lowest number of closures since 2000.

Peter Harden, co-publisher of the guide, said: "There would seem to be no single explanation of why, during a period of such economic upheaval, the low rate of restaurant closures has so confounded the predictions. One of the more important reasons may be that most restaurant-going



Londoners are still eating out according to the latest Harden guide

Londoners are still in employment, and many of them have found that their disposable income has been boosted by lower mortgage payments.

"Another is that active promotion by restaurants is no longer seen as embarrassing,

and they have more sophisticated promotional instruments at their disposal."

According to the guide, 121 restaurants opened in London over the past year, while the average price of eating out in the capital is now £40.73.

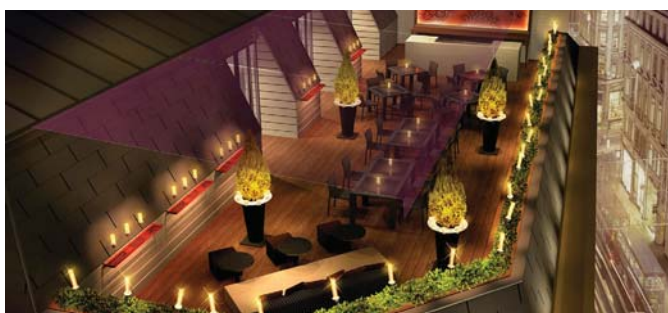
### Hilton break up denied by owner

Private equity firm Blackstone has categorically denied reports that it plans to break up and sell off pieces of the Hilton Hotels Corporation.

The *Independent* reported that Blackstone, which bought Hilton for £15.5bn in 2007, was looking into a number of possibilities, including breaking up the company on geographic lines, divesting certain brands, debt-for-equity swaps or making sections of the company public.

The newspaper quoted a source saying: "These are early discussions, but the US\$21bn (£13bn, 15bn) debt raised to buy Hilton isn't going to be easily refinanced."

## Aqua to open new London venue



A rendering of the new rooftop restaurant at Dickens and Jones

By **Pete Hayman**

aqua, the Hong Kong-based restaurant operator, has unveiled plans to launch its first property outside China in September with a new venue at the former Dickens and Jones building in central London.

The new aqua london venue in Argyll Street will boast two distinct dining spaces – aqua nueva, serving northern Spanish cuisine, and aqua

kyoto, offering a range of Japanese cuisine, while the aqua spirit bar area will provide pre and post-dining drinks.

aqua currently operates 10 restaurants in China and Hong Kong, including the Michelin-starred Hutong property.

The new London restaurant will offer views across the capital, while the design has been co-ordinated by the company's managing director, David Yeo.



## Trocadero 'pod hotel' scheme deferred

Westminster City Council planners delay decision on new 495-bedroom property

By **Pete Hayman**

Plans to establish a 495-bed-room 'pod' hotel as part of an overhaul of the Grade II-listed Trocadero property in central London have been deferred by Westminster City Council (WCC).

According to Criterion Capital's proposals, the hotel is likely to be operated by French company Accor and will occupy part of the second to seventh floors in the building, but the scheme was deferred by WCCC planners over concerns relating to proposed public realm improvements near the site.

The 'pod' hotel has been designed to provide high quality accommodation for both leisure and business customers, and could feature a breakfast bar at ground floor



**The Grade II-listed Trocadero building in central London**

level and a bar and terrace area at eighth floor and roof level.

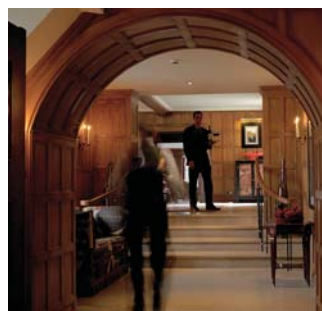
A report that went before council planners on 13 August said: "The size of the hotel is considered appropriate to the character and scale of the surrounding area, which has a mix of uses including a large number of entertainment uses.

"The hotel will also provide

affordable accommodation for visitors to this part of central London, which is considered welcome in view of the closure of the nearby Regents Palace Hotel in December 2006."

Plans also include removing the Trocadero's IMAX cinema and refurbishment of another two-screen cinema to provide a community arts space.

## 'Financing crisis' concerns Irish hotel industry



**Surplus capacity is among the issues affecting Irish hotels**

By **Pete Hayman**

A "financing crisis" facing the Irish hospitality sector will threaten the long-term future of the country's tourism industry if the government fails to act, according to the Irish Hotels Federation (IHF).

IHF president Matthew Ryan said the Irish government will have to take urgent action to address a number of issues that could have severe implications for hotels and guest houses.

Surplus capacity, difficulties obtaining bank finance to survive the effects of the recession and excessive local authority charges are among a number of issues that the IHF claims must be addressed in order to provide better support for the sector.

## Firoka Group plans Heythrop Park Hotel refurbishment

Hotel operator The Firoka Group, which is owned by entrepreneur Firoz Kassam, has secured a £20m loan from Royal Bank of Scotland (RBS) to fund the redevelopment of Heythrop Park Hotel in Oxfordshire.

The 116-bedroom hotel will be expanded and rebranded as a Crowne Plaza Hotel while new leisure will facilities include a new 18-hole golf course spread across the property's

440-acre estate and a health and fitness club. The existing nine-hole golf course will also be refurbished. Ashwini Twakley, Firoka's finance director, said the new facilities will be launched in the last quarter of 2010.

"The RBS funding allows us to develop our hotel portfolio and we have selected Heythrop Park to be refurbished, significantly increasing the size of this historic location," said Twakley.

**leisure-kit.net**

The website, email and search engine for leisure buyers

health & fitness

leisure

sport

spa

hospitality

attractions

theme parks

museums

Now over  
**5,000**  
leisure suppliers  
listed on our  
NEW improved  
search



Visit [leisure-kit.net](http://leisure-kit.net) for the latest news about products and services for the leisure industry and subscribe to the **FREE fortnightly product report**

To advertise your product and reach over 20,000 leisure buyers call now on +44 (0)1462 471908 or email [leisure-kit@leisuremedia.com](mailto:leisure-kit@leisuremedia.com)

subscribe online at  
[www.leisuresubs.com](http://www.leisuresubs.com)  
or call +44 (0)1462 431385

## IN BRIEF

### Green light for new Northampton marina

► Plans for the creation of a new £2m marina on the River Nene in Northampton have been given the go-ahead after the local authority agreed to provide the final amount of grant funding for the scheme. The Becket's Park Partnership will receive £204,845 from Northamptonshire County Council through the Single Programme funding to develop the marina, which will also establish a regional centre for the boating community. The marina will also provide boaters with a link between the Grand Union Canal and the Fens.

### £7m refurbishment for Hull's West Park

► Hull City Council and Hull regeneration agency Gateway have unveiled £7m plans for transforming West Park. The money will be invested over the next five to six years and will go towards reviving the park's "original Victorian splendour, but with a dramatic, contemporary twist". Plans include lighting displays that interact with park users, public artworks and sculptures, a new paddling lake with an island, a bandstand, a skatepark and climbing wall, and improvements to the miniature railway and bowling club.

### DEFRA names preferred NE chair candidate

► Poul Christensen, the current acting chair of Natural England (NE), has been named by the government as its preferred candidate to take over the post on a permanent basis. The previous chair, Sir Martin Doughty, passed away earlier this year after losing his battle with cancer. Christensen, a NE board member since 2006, will now be considered for the position by the environment, food and rural affairs select committee.

## Green light for Brockholes proposals

Floating visitor centre to be built at Lancashire reserve as part of £59m scheme

By **Pete Hayman**

Construction work on a new floating visitor centre at the Brockholes Wetland and Woodland Reserve near Preston, Lancashire, is set to get underway in October after plans were approved.

The development of the landmark building, which has been designed by Adam Khan Architects, forms part of a £59m Newlands scheme led by the Forestry Commission and the Northwest Regional Development Agency.

Plans for the visitor centre, which is being developed in partnership with Lancashire Wildlife Trust, include a café, a shop, a gallery and education and meeting rooms. It will provide a regional environmental showcase and aims to



Plans for the new centre were drawn up by Adam Khan Architects

encourage visitors to engage with the natural world.

Keith Jones, regional director of the Forestry Commission, said: "Brockholes is an inspiring site, and a flagship project. not only will it develop not only a high value wetland and woodland but a stunning visitor centre; together they will act as

a beacon for Northwest environmental excellence."

Brockholes Wetland and Woodland Reserve currently has more than 106 hectares (261.9 acres) of natural habitats, including lakes, reed beds, grassland and a link to an adjacent 66-hectare (163.1-acre) area of ancient woodland.

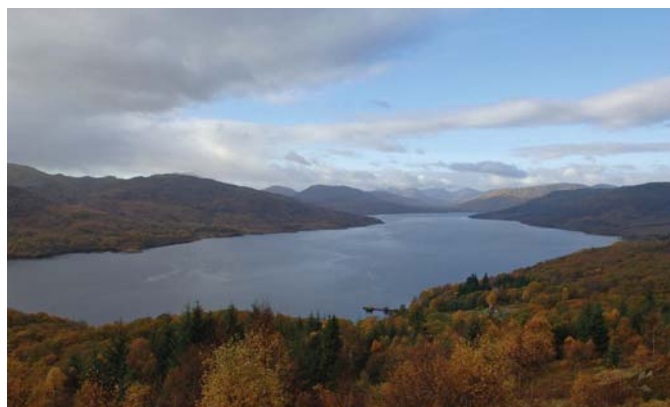
## New National Park passport scheme introduced

By **Pete Hayman**

A new passport scheme has been introduced to encourage people to collect a series of stamps and signatures from each different national park across the UK.

The initiative forms part of wider plans to celebrate the 60th anniversary of the introduction of government legislation that first laid the foundations for the creation of national parks – the *Access to the Countryside Act 1949*.

It is hoped that the scheme will inspire some of the 60 million people who travel to national parks each year to visit places and attractions they may not otherwise have considered, as well as raising the profile of the 14 parks across the UK. The National Parks participat-



Loch Lomond and the Trossachs is participating in the initiative

ing in the scheme include the Brecon Beacons, Wales; the New Forest, southern England; the Lake District in north west England; and Loch Lomond and the Trossachs in Scotland.

Although not technically designated as a national park, the Norfolk Broads in East Anglia will also be included as

part of the scheme. Visitors will be able to obtain their stamps and signatures from visitor information centres at each of the national parks, along with the passports themselves. Passports can also be downloaded from [www.nationalparks.gov.uk/passport](http://www.nationalparks.gov.uk/passport)



# Fill your VACANCY

with the Leisure Opportunities  
recruitment service, featuring the  
**LIW JOBSHOP**

## BOOK TODAY you will get...

- Your advert in Leisure Opportunities' 15 September issue, which is distributed at the Leisure Industry Week (LIW) Show at the NEC Birmingham, 22 - 24 September 2009
- Your advert printed out and displayed in the JOBSHOP on the Leisure Opportunities stand at the LIW show
- Your vacancy on our website [www.leisureopportunities.co.uk](http://www.leisureopportunities.co.uk)
- Your advert in our weekly jobs ezine, which delivers leisure vacancies by request to thousands of job seekers
- Your advert will appear on an additional ezine newsletter of your choice from our extensive range of market-specific emails.

## you will reach...

- Over 23,000\* job seekers who read Leisure Opportunities, plus an extra 5,000 school leavers who'll receive their own copy of this special issue.
- Over 360,000 job seekers who visit [www.leisureopportunities.co.uk](http://www.leisureopportunities.co.uk)
- Over 66,000 job seekers who subscribe to our free jobs ezine
- Over 12,500 visitors, delegates and exhibitors at the LIW Show

\* ABC Audited



Over  
360,000  
job seekers  
visit our  
website each  
month

for further details contact the Leisure Opportunities team  
t: +44 (0)1462 471747 f: +44 (0)1462 433909  
e: [leisureopps@leisuremedia.com](mailto:leisureopps@leisuremedia.com)

**GUARANTEE  
YOUR PLACE**

book by Noon on  
9 September 2009

daily news and jobs at [www.leisureopportunities.co.uk](http://www.leisureopportunities.co.uk)

The  
Leisure Media  
Company  
Publishes



## Employment, employment, employment

Investing in tourism jobs will have wide-spread benefits



**KURT JANSON** is  
policy director  
of Tourism  
Alliance

One of the slogans that carried Labour into power in 1997 was "Education, Education, Education". Twelve years on, as the number of people out of work approaches the three million mark, one of the slogans that all political parties will be vying for going into next year's election will be "Employment, Employment, Employment".

The call to protect and create jobs is one that has particular resonance for our industry. The potential of the tourism sector to create much needed employment was highlighted in the British Chamber of Commerce's report *Backing UK Tourism: Destination Recovery*. The report concluded that: "With unemployment rising and the path to sustainable economic growth still uncertain, we all need to help foster the UK's recovery. Sectors that previously drove economic growth, such as construction and the financial services, are likely to be weaker in the future. Sectors with the potential for growth will need to step into the breach. Tourism is one of these sectors".

Previous work by VisitBritain on tourism employment has shown just how easy it is for tourism to provide jobs. A 2003 study showed that one new job in the tourism sector was created for every £42,000 in additional tourism expenditure (around £50,000 in today's terms) – so investing an additional £20m in tourism marketing can, within a year, generate £600m in additional revenue for the UK economy.

Maybe the hour for the tourism industry to shine is now at hand.

## Welsh operators fear tax impact

Ending tax breaks for property owners could damage tourism industry

By **Helen Patenall**

The government's proposal to end tax breaks for holiday property owners from April 2010 has prompted the Welsh Assembly Government in Cardiff to petition the Treasury to repeal the decision.

The Welsh Assembly is concerned that the move could force people into bankruptcy, have a damaging impact on the Welsh tourism industry and make it more expensive to holiday in the country.

The new measures will put an end to home owners nationwide from using their properties to defer capital gains tax payments, offsetting losses made on their investments against their income and from receiving capital allowances.

The Welsh Conservatives estimate that such measures could cost a person running a furnished holiday lettings business an average of £4,000 per year more in tax.



**Holiday lets could become more expensive**

Shadow heritage minister Alun Cairns said: "The decision to abolish the rules on holiday lets could have damaging consequences in Wales. These changes affect the financial viability of small businesses operating in the tourism industry and could turn a small profit into a large loss."

## First Group unveils Greyhound coach service

By **Pete Hayman**



**The iconic US service is to launch in the UK**

Travel company First Group is to introduce a fleet of the iconic US Greyhound coaches as part of a new passenger service between Southampton, Portsmouth and London from 14 September.

The services, which will cost as little as £1 per journey plus a booking fee, will run every hour and are scheduled to integrate with ferry crossings to the Isle of Wight.

It is hoped that additional destinations will be introduced from 2010 as part of plans to roll out the Greyhound UK service.

## 'Staycations' fail to stem seaside job losses

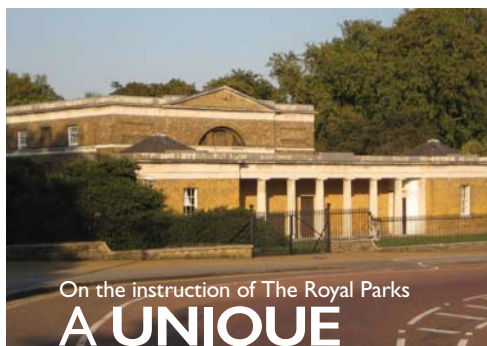
Unemployment levels in English seaside resorts have increased during the past year despite a rise in the number of people opting for 'staycations', according to the Trades Union Congress (TUC).

Figures released by the Office of National Statistics reported that five million Britons had shunned foreign holidays in favour of domestic breaks as

a result of the recession, but the TUC said that the shift in holiday trends had failed to halt rising unemployment.

According to the TUC, unemployment in Bournemouth increased by 130 per cent since July 2008 – significantly above the national average of 81 per cent, while there has been a 122 per cent increase in Weston-super-Mare.





On the instruction of The Royal Parks

## A UNIQUE LICENCE OPPORTUNITY

The Magazine,  
Kensington Gardens

An imposing Grade II listed building of approximately 8,655 sq ft (804 sq m) gross on 0.81 acres (0.33 hectares).

This is a re-advertisement inviting interest from previous and new applicants.

Potential uses could include museum, educational, cultural, gallery, hospitality, catering or leisure. Subject to all necessary consents which must include the sensitive restoration of this listed building.

Submissions of interest are invited by 9 October 2009.

Contact  
chris.hemmings@knightfrank.com  
020 7861 5390  
oliver.brodrickward@knightfrank.com  
020 7861 1055

[www.knightfranksites.co.uk/theroyalparks](http://www.knightfranksites.co.uk/theroyalparks)  
password: opportunity



BUCKINGHAMSHIRE LAWN TENNIS ASSOCIATION  
invites tenders from  
experienced and qualified individuals or  
organisations for the management of the

## BUCKINGHAMSHIRE INDOOR TENNIS CENTRE at High Wycombe

The facility is based at Cressex School on land leased from Buckinghamshire County Council. It consists of four indoor courts plus ancillary amenities.

Presently there are 47 years remaining on the lease.

Closing date for tenders is Friday 23rd October 2009.

### FOR FURTHER DETAILS CONTACT:

**Andrew Petherick,**  
**6 Oakley Road, Clapham,**  
**Bedfordshire, MK41 6AN**  
**Tel: 01234 213314**  
**Email: [ajp@raeleisure.idps.co.uk](mailto:ajp@raeleisure.idps.co.uk)**



## NORTH LINCOLNSHIRE COUNCIL

### TENDER NOTICE

## The Baths Hall - Appointment of Management Company

North Lincolnshire Council is redeveloping the existing 'Baths Hall' site to create a new entertainment venue. The new venue will provide a high quality landmark building that contributes to a diverse cultural offering in North Lincolnshire.

The council is seeking to appoint a management company to operate all aspects of the venue.

Organisations wishing to be considered for supplying this service must complete a pre-qualification questionnaire.

The issue and submission of completed questionnaires is via the supplier contract management system (SCMS) website (<http://scms.alito.co.uk>). You will have to register interest by following the suppliers/contractors link and then selecting the project titled '12722 - The Baths Hall Management Company' before uploading the completed questionnaire. If you require any assistance accessing the website please contact the SCMS Helpdesk on telephone 0113 2474001 or email [scms@yhcoe.org.uk](mailto:scms@yhcoe.org.uk)

#### Contacts:

All queries should be raised via SCMS by selecting the above project.

Closing date for completed  
pre-qualification questionnaires is

Noon on 18 September 2009.



### REFURBISHMENT OF COMBER LEISURE CENTRE

#### Comber NI - Procurement of Design Team Services to RIBA Stage D

Ards Borough Council has approved plans to refurbish Comber Leisure Centre, Comber. The Council is seeking Expressions of Interest (EoI) from suitable architectural practices/consortia forming an integrated design team to take the project to RIBA Stage D.

At Stage D the design team will be required to conduct a further tendering exercise to appoint a suitably experienced D&B team to take the project, including equipping, to completion. At this stage the lead contractor, incorporating a QS expertise, may be appointed as Employer's Agent.

The £1m est. refurbishment project will see the following developments at the facility:

- Removal of health suite and replacement of additional 'dry' space
- Relocation of offices to ground floor eg party room,
- Relay sports hall floor
- Large refurbishment to convert the minor hall into a large fitness suite and studio with mezzanine floor
- Relocation of the children's play facility to the current fitness and health suite area
- Re-modelling of existing access corridor between reception and the existing minor hall
- Re-modelling and refit of the reception area
- Improvements to (refit), and re-modelling of, changing rooms, including delineation of wet and dry changing areas

Potential Design Teams must complete a Pre Qualification Questionnaire and demonstrate a proven successful track record in leisure centre design and refurbishment.

Interested organisations can request an information pack and PQQ from: Jon Carney, Senior Consultant, Strategic Leisure, 3rd Floor, Rutherford House, Warrington Road, Birchwood Science Park, Warrington WA3 6ZH. Telephone: 01925 855 550 Email: [joncarney@strategicleisure.co.uk](mailto:joncarney@strategicleisure.co.uk)

The closing date for the return of completed questionnaires is 12pm Wednesday 30th September 2009. All completed PQQs should be returned to the above address, for the attention of Rachel Fowler, Managing Director.



# leisure property news

Visit [leisureproperty.com](http://leisureproperty.com) for the latest news on Properties, developments, tenders and investment.

## IN BRIEF

### Contractor awarded 2014 venue contract

► Glasgow City Council has appointed Sir Robert McAlpine as the main contractor for the city's new £120m National Indoor Sports Arena and the Sir Chris Hoy Velodrome venues. The council's executive committee approved the findings of a report that recommended the selection of the Hertfordshire-based construction company from a shortlist of four firms, which also included Laing O'Rourke, Bovis Lend Lease and BAM. Both the 5,000-seat NISA and the 2,000-seat Sir Chris Hoy Velodrome will be used during the 2014 Commonwealth Games.

### Finch appointed as new CABE chair

► Culture secretary Ben Bradshaw has announced the appointment of Paul Finch as the new chair of the Commission for Architecture and the Built Environment (CABE). Finch, who is currently programme director of the World Architecture Festival, will succeed Sir John Sorrell as chair of the commission for a four-year period from 14 December.

### Hayle Harbour proposals put on show

► Plans for an extensive redevelopment of Hayle Harbour's South Quay area in Cornwall, which have been drawn up by ING Real Estate Developments, have been put on public display. The proposals include transforming the South Quay into a vibrant waterfront area for visitors to enjoy the views from buildings and public spaces, with a number of restaurant units and improved pedestrian access earmarked, as well as retail units.

## Sheffield Wed unveils stadium plans

Improvements to ageing ground aiming to strengthen ties with local community

By **Pete Hayman**

Sheffield Wednesday Football Club (SWFC) has unveiled plans to redevelop its Hillsborough stadium in a bid to be included as one of the host venues for the 2018 FIFA World Cup.

The scheme, which the Coca Cola Championship club anticipates will cost a total of £22m, will include increasing the venue's seating capacity from 39,812 to 44,825 and the construction of a new landmark roof structure for the Kop stand.

Pillars will be removed to provide unrestricted viewing for spectators and a new roof structure will be built above the West Stand.

The proposals also includes a new learning zone, an extended North Stand and 17 new hospitality suites.



The revamped venue will feature a landmark arch at the Kop end

An outline planning application for the development has already been submitted to Sheffield City Council, and the club hopes the new look Hillsborough will be completed by the end of 2013.

Lee Strafford, SWFC chair, said: "Hillsborough is in need of investment and our plans

will improve the fan experience, boost the club's revenue generating capabilities and also strengthen our ties with the local community.

"Football is a proven catalyst for driving social cohesion and I want to see us hosting schools, adult learning groups and other community organisations."

## Council questions Belfast scheme

By **Pete Hayman**

Belfast City Council (BCC) has raised concerns over a lack of progress on the proposed £360m Royal Exchange scheme after it was reported that the development had fallen victim to the economic downturn.

In November last year, developer Leaside Investments was given nine months by the council and the Northern Irish Department for Social Development (DSD) to draw up a planning application for the mixed-use project in the city's north east quarter.

However, plans are yet to be submitted and BCC officials are



Plans are yet to be submitted

now seeking answers from both the DSD and Leaside Investments, a joint venture comprising William Ewert Properties and Snoddon Construction. ING Real Estate is also involved with the scheme.

## Expansion plans for Derby CCC

The capacity of the County Ground in Derby is set to increase by 2,000 under redevelopment proposals announced by Derbyshire County Cricket Club.

A new permanent marquee is also planned as part of the £500,000 project, which will enable the venue to cope with larger cricket fixtures, as well as providing space for dinner and dance functions capable of accommodating up to 300 people.

DDCC plans to carry out the work in time for the start of the 2010 season.



## Hospitality & Leisure

Specialist Property Services

**Valuations, Sales, Aquisitions,  
Rent Reviews, Expert Witness.**

**Contact:** Colin White  
[colin.white@edwardsymmons.com](mailto:colin.white@edwardsymmons.com)

London • Bristol • Leeds • Liverpool • Manchester • Plymouth • Southampton

**Edward  
Symmons**

**020 7344 4500**

[www.edwardsymmons.com](http://www.edwardsymmons.com)

UK and international  
property experts  
covering all sectors  
of the leisure industry

**Alan Plumb**  
+44 (0) 1865 269000  
[aplumb@savills.com](mailto:aplumb@savills.com)  
[savills.co.uk/leisure](http://savills.co.uk/leisure)



## THE LEISURE PROPERTY FORUM

For information on all Leisure Property  
Forum seminars, and how to join call  
**+44 (0) 1462 471932** or visit  
[www.leisurepropertyforum.org](http://www.leisurepropertyforum.org)



VAT Registration No. 844 8560 00

Rating • Planning & Site Licensing

**CHARLES  
F.J. JONES & Son** LLP  
CHARTERED SURVEYORS

**Leading Professional Advisors  
to the Leisure Industry  
for over 70 years**

**Charles F Jones & Son LLP**

**01244 328141 [www.cfj.co.uk](http://www.cfj.co.uk)**

16 Grosvenor Court Foregate Street Chester CH1 1HN

**Valuations • Sales & Acquisitions**

**HL HUMBERTS LEISURE**

specialist professional  
leisure property expertise

- |                  |                           |              |
|------------------|---------------------------|--------------|
| ■ Sales          | ■ Planning                | ■ Purchases  |
| ■ Rent reviews   | ■ Arbitrations            | ■ Rating     |
| ■ Lease renewals | ■ Expert witness          | ■ Valuations |
| ■ Consultancy    | ■ Viability & feasibility | ■ Funding    |

London +44 (0)20 7629 6700 South +44 (0)1962 835 960  
North +44 (0)1756 799 271 South East +44 (0)1273 325 911  
South West & Wales +44 (0)29 2022 6892

[www.humberts-leisure.com](http://www.humberts-leisure.com)

To book your  
advertisement in the  
Leisure Opportunities  
Property Directory

call

**+44 (0)1462 471747**

# THE leisure property REPORT

Properties, development, tenders and investment online @ [leisureproperty.com](http://leisureproperty.com)

Get a FREE weekly subscription to The Leisure Property Report e-publication @ [www.leisuresubs.com](http://www.leisuresubs.com)

# GO GREEN

[www.leisureopportunities.co.uk/green](http://www.leisureopportunities.co.uk/green)



Did you know that you can now receive  
a **FREE subscription** to Leisure Opportunities  
in its new, greener, paper-free, digital format?

**Change the way you read Leisure Opportunities magazine**

**SIGN UP ONLINE:** [www.leisureopportunities.co.uk/green](http://www.leisureopportunities.co.uk/green)

## WHY NOT ADD A FREE DIGITAL SUBSCRIPTION TO OUR OTHER PUBLICATIONS?



### SPA BUSINESS

Read about the innovators shaping the global spa market from curative and thermal to resort, day and destination spas



### HEALTH CLUB MANAGEMENT

Keep up to date with the health & fitness market by reading the leading title for the industry. Includes Spa, Europe and World specials



### LEISURE MANAGEMENT

The magazine for professionals and senior policy-makers. Leisure Management looks at the latest trends and developments from across all leisure markets



### SPA OPPORTUNITIES

Fortnightly international spa recruitment, training and news publication



### SPORTS MANAGEMENT

For managers and policy makers in the sports market who want to keep ahead of the game



### ATTRACTIONS MANAGEMENT

Everything you want to know about the visitor attractions market. From theme parks and museums to science centres, zoos and corporate brandlands

**GO GREEN** [www.leisureopportunities.co.uk/green](http://www.leisureopportunities.co.uk/green)





A network of providers will deliver industry-recognised training

## Outdoors academy set to launch

September start for scheme following successful pilot

By **Pete Hayman**

The National Skills Academy (NSA) for the Outdoors is set to launch in Penrith, Cumbria, on 15 September following a successful pilot scheme in north west England earlier this year.

The new academy will deliver outdoor skills training through a network of providers, which already includes educational charity Outward Bound and holiday company, PGL Travel.

A total of 76 people have received industry-recognised skills training as a result of the pilot scheme since it launched

in January through the NSA for Sport and Active Leisure.

Employers can learn more about funding opportunities at an event marking the launch of the NSA for the Outdoors, including bursaries that could save groups up to 60 per cent on industry-recognised awards.

Lucy Harrison, North West business development manager for the outdoors, said: "By providing a one-stop shop to access the best training in the outdoors, matched with available funding streams, we aim to make an employer's training budget go further."

## Lifeguard scheme for Bolton youth

The Bolton Sports and Physical Activity Alliance has unveiled plans to invest £10,000 in a new scheme to encourage young people to become lifeguards.

Over the next two years, funding will go towards providing students aged between 14 and 16 years old with the chance to learn life saving skills through the Royal Life Saving Society's Rookie Lifeguard Programme.

The scheme will be aimed at young people in five areas of the town, particularly those studying for a GCSE in Physical Education.

Students will be expected to give up time during their half-term holidays to learn the necessary life saving skills to gain a Gold Rookie Award and later a Young Aquatic Award, while also volunteering to work as a lifeguard at local swimming pools.

## Make a difference with great work experience

Offering young people placements can have significant benefits for operators

If you're an employer in the hospitality, leisure, travel or tourism industry, you may ask yourself; why should I offer young people work placements? Some employers are put off by the idea that offering work experience will be a huge hassle and take up too much of their time. They couldn't be more wrong!

With the right approach and support, there are significant benefits to offering placements, including positive brand promotion, sourcing new talent and helping to reduce recruitment costs. Work experience gives companies the chance to attract young people into jobs and to assess a potential employee over a period of time.

Springboard offers a range of work experience programmes, including Summer School, which takes place annually across the UK. As with all Springboard's activities, Summer School contributes directly towards raising the profile of the industry and attracting young people into employment within it.

This year, Summer Schools have taken place in London, Wales and Liverpool, allowing more than 40 students aged between 16 and 24-years-old the chance to gain both practical experience and an insight into the real career opportunities on offer in this industry. The initiative was supported by 24 prestigious employers who are all passionate about what they do and used the programme as a tool to share their enthusiasm with young people who are interested in entering the industry.

It is important that students on work experience receive an accurate representation of what the industry is all about, which means ensuring that placement students are treated like any other employee. Good work experience can have a huge impact on a student's future and will no doubt be a deciding factor as to whether it is the career path they wish to pursue.

Offering good quality work experience opens up the chance to find talent that may otherwise never be nurtured. It does require an element of commitment but the rewards are clear.

For employers which are committed to offering work experience that's worth doing, Springboard offers a guidance and support package called INSPIRE which, when adhered to, allows the employers to carry the INSPIRE logo to mark them as employers of choice.



**CARLA DILLON** is the careers and youth programmes manager of Springboard UK. *Leisure Opportunities* is the official recruitment magazine for Springboard UK

*Discover your potential... Discover our passion*

The very best in CYQ and Active IQ qualifications at unbeatable prices

– WHY PAY MORE?

**Discovery**  
learning

**Gym instructor, Personal Trainer, Aerobics Instructor, Aqua, GP referral, Spinning, Children's Exercise, Childhood Obesity, Circuit Training, Sports Nutrition, Weight Management, Leisure and Operations NVQ's.**

Courses throughout the UK and home study

0208 543 1017

Info@discovery.uk.com  
www.discovery.uk.com

"because knowledge matters"

Active IQ



**WRIGHT Foundation  
GP EXERCISE REFERRAL QUALIFICATION**

*Courses every week throughout the UK*



24 - 28 Aug	Coventry, West Midlands
07 - 11 Sept	University of Derby - Buxton
14 - 18 Sept	Davyhulme, Manchester
21 - 25 Sept	Trowbridge, West Wiltshire
05 - 09 Oct	South Shields, South Tyneside
12 - 16 Oct	Fettes College, Edinburgh
26 - 30 Oct	Hassocks, West Sussex
26 - 30 Oct	Sleaford, Lincolnshire
26 - 30 Oct	Harrogate, North Yorkshire
02 - 06 Nov	Cookstown, Co Tyrone
16 - 20 Nov	Preston, Lancashire

**THE FIRST AND STILL THE  
LEADING  
EXERCISE REFERRAL  
QUALIFICATION**

WOULD YOU LIKE TO HOST A COURSE AT YOUR CENTRE?  
PLEASE CALL 0855 056 0260 (09-5am) FOR FURTHER INFORMATION

**SPECIALIST COURSES!**

**Obesity & Diabetes**

24 - 26 Aug	Chesterfield, Derbyshire
05 - 07 Oct	Ballymoney, Northern Ireland
15 - 17 Dec	Morpeth, Northumberland

**Pulmonary Rehabilitation**

28 - 30 Sept	Chesterfield, Derbyshire
05 - 07 Oct	Oldham, Lancashire
07 - 11 Sept	Warr, Shropshire
16 - 20 Nov	Oldham, Lancashire

**Cardiac Rehabilitation**

**THE NEW GOLD STANDARD CARDIAC REHAB QUALIFICATION**

INFO: Tel: 0845 056 0260 (UK lo-call)

Website: www.wrightfoundation.com

**Loughborough**  
COLLEGE est. 1909

**Are you in the running  
for a career in  
Leisure Management?**

Loughborough College offers courses in Leisure, Sport, Event and Recreation Management to help you start your career, or develop your skills and managerial expertise from an existing position in the leisure industry.

Study full time, day release, block release or by distance learning, at a variety of levels; from the ISRM Fitness Management Certificate and Higher National Diploma to full Honours Degree. The Foundation Degree and Higher Professional Diploma are fully accredited by the ISRM, and lead to use of the designatory letters M.Inst.SRM.

Recruiting now for a September 2009 start.

Visit [www.loucoll.ac.uk](http://www.loucoll.ac.uk)  
or call 0845 166 2950  
for more information



Sport Industry  
Research Centre

**SPORT AND LEISURE STATISTICS**

FORECASTS FOR THE SPORT AND LEISURE INDUSTRIES

The Sport Industry Research Centre publishes two annual reports, Leisure Forecasts and Sport Market Forecasts. These reports provide valuable insight into future market trends.

Both publications are essential references for industry practitioners, consultants and researchers.

The Sport Market Forecasts are produced in conjunction with Sport England.

To find out more please visit  
[www.shu.ac.uk/ad/sportandleisure](http://www.shu.ac.uk/ad/sportandleisure)

Or contact  
Susie Shaw  
Phone 0114 225 5919  
Fax 0114 225 4341  
Email [s.shaw@shu.ac.uk](mailto:s.shaw@shu.ac.uk)



Sheffield  
Hallam University



SPORT  
ENGLAND



**FOCUS**  
TRAINING

08007319781

[www.focus-training.com](http://www.focus-training.com)

for all your  
training needs ...

... please see  
ad on page 24



**Register of Exercise Professionals**

## Love Pilates?

Whatever your background you could turn your love for Pilates into a new and rewarding career

**Non-qualified Pilates enthusiasts**

- Train as a fully certified STOTT PILATES® matwork instructor
- Full support every step of the way

**Qualified fitness & health professionals**

- Train as a fully certified STOTT PILATES matwork or reformer instructor
- Qualification at Level 3 through CYQ (optional)
- Earn 16 REPs points per course

Oxford studio moving to new premises – 3 dedicated Pilates studios within mbody's in a town centre location. Come and see for yourself and take part in free STOTT PILATES sessions on Sat 5th and Sun 6th Sept 10am-4pm

**STOTT PILATES®**  
merriheiw corporation

**0800 434 6110**  
[www.activetraining.info](http://www.activetraining.info)

®Registered trademark of Merriheiw Corporation, used under license. STOTT PILATES® photography © Merriheiw Corporation.

## Take control of your HSE First Aid needs

The Five-Day First Aid Instructor Course  
Includes the PTLLS Level 3/4 Training Qualification

**NEW!** Two-Day Emergency First Aid At Work Instructor Course  
Teach the new EFAW Course!

**Nuco Training Ltd**  
**08456 444 999**  
[enquiries@nucotraining.com](mailto:enquiries@nucotraining.com)  
[www.nucotraining.com](http://www.nucotraining.com)  
[www.nucoplus.com](http://www.nucoplus.com)

City & Guilds Approved Centre  
NUCO training

"...I found the Instructor Course to be excellent and a credit to your company..."  
Debbie Hull (Bishops Cleeve)

**FOR ALL YOUR FIRST AID NEEDS**

## STRIKING OUT FOR A BETTER LIFE

Step up your pace with a flexible distance learning course that will help you to further your career with professional qualifications from Level 2 to Level 4.

Choose from:

**ISRM/Active IQ Fitness Management Certificate NEW!**

- ISRM/City & Guilds Higher Professional Diploma
- ISRM Supervisory Management Certificate • Nutrition Awareness

NEC's range of courses mean you can enrol any time, study at your own pace, in your own time with the support of a specialist tutor

Quote Ref U002

Widening opportunities through distance learning

**Enrol now!**  
0800 389 2839  
[www.nec.ac.uk](http://www.nec.ac.uk)

Register of Exercise Professionals  
active IQ  
ISRM  
nec NATIONAL EXTENSION COLLEGE

**WIDEN**  
**CAREER**  
**SKILLS**

## Instructor Training Courses

Leisure East Devon Ltd

L2 Gym Instructor Course - September 2009

Interested in any of the following courses?

**L2** Gym, Exercise to Music, Step, Circuits, Nutrition

**L3** Gym, Exercise to Music, Personal Training, Yoga, Pilates, Exercise Referral

For more information, please contact:  
e [CYQ@ledleisure.co.uk](mailto:CYQ@ledleisure.co.uk) t **01297 35235**

**led Leisure East Devon** [www.ledleisure.co.uk](http://www.ledleisure.co.uk)

Register of Exercise Professionals

## Leisure Opportunities training DIRECTORY

From just £534 you can access over 23,000 motivated leisure professionals for 3 months (6 consecutive insertions). Committed to the leisure industry, they are potential students for your courses

**TO ADVERTISE**  
**+44 (0)1462 471747**  
[leisureopps@leisuremedia.com](mailto:leisureopps@leisuremedia.com)

## GB FITNESS

GB Fitness presents

**N.A.B.B.A. ADVANCED INSTRUCTOR COURSES**  
**N.A.B.B.A. PERSONAL TRAINER COURSES**  
**B.C.M.A. ADVANCED NUTRITION COURSES**  
**ONE-TO-ONE CONSULTATIONS**

Training provider of 2007

**Not like the rest... TRAINED BY THE BEST™**

Call Cain on 07961 346461  
Email: [cain@gbfitness.com](mailto:cain@gbfitness.com)  
Or view [www.gbfitness.com](http://www.gbfitness.com)  
For more details

Award winning courses creating award winning trainers...

[www.leisureopportunities.co.uk](http://www.leisureopportunities.co.uk)

## leisureopportunities

news & jobs updated daily online

YOUR 1ST CHOICE FOR RECRUITMENT & TRAINING

**NEXT ISSUE:**  
**15 SEPTEMBER**  
BOOK BY NOON ON  
WEDS 9 SEPTEMBER 2009

**TO ADVERTISE, Contact the Leisure Opportunities team on**  
t: +44 (0)1462 431385  
e: [leisureopps@leisuremedia.com](mailto:leisureopps@leisuremedia.com)

## LOVE your job

**Become a Master Trainer**  
Retrain and excel as a successful PT

**Become a Personal Fitness Coach**  
ACSM approved

**Upgrade for Sports Science students**  
31 days to PT success

**Virtual Business Coach**  
The support you need to excel!

become a **MASTER TRAINER**

**0845 0944 007**

EUROPEAN INSTITUTE OF FITNESS

EHFA

Are you  
**guilty?**  
of not  
giving your staff  
a voice



Let us help you!

Trained staff will transform your business professionally and financially.

Happy motivated staff are the key to selling and retaining more members and increasing secondary spend. Focus Training will assess your staff's needs, design then deliver bespoke training and development programmes allowing your staff to deliver exceptional financial results.

**CALL US NOW FOR YOUR FREE STAFF ASSESSMENT**

[www.focus-training.com](http://www.focus-training.com)

call us on 0800 731 9781



health & fitness

leisure

sport

spa

hospitality

attractions

theme parks

museums

Now over  
**5,000**  
leisure suppliers  
listed on our  
NEW improved  
search

**leisure-kit.net**

The website, email and search engine for leisure buyers

Visit [leisure-kit.net](http://leisure-kit.net) for the latest news about products and services for the leisure industry and subscribe to the **FREE fortnightly product report**

To advertise your product and reach over 20,000 leisure buyers call now on **+44 (0)1462 431385** or email [leisure-kit@leisuremedia.com](mailto:leisure-kit@leisuremedia.com)



subscribe online at [www.leisuresubs.com](http://www.leisuresubs.com) or call +44 (0)1462 431385



## Four Star Authority | Award Winning Team | £50 Million Capital Investment in Facilities



### meadows

Leisure • Library • Health

**This impressive new £8.2 million facility opens in Maghull in November 2009 and will offer two swimming pools, fitness suite, sauna/steam suite, activity/dance studio and library. We require highly motivated and dedicated people to join our award winning Leisure Department and help deliver the highest standards of service to our valued customers.**

**Fantastic career opportunities. Are you up for the challenge?**

- **Operations Manager** Salary up to £16,683\* (Ref M1)
- **Operations Managers (Health & Fitness)** (Ref M2)  
Salary up to £16,683\*

- **Senior Operations Assistants** (Ref M3)  
Salary up to £15,291\*
- **Fitness Instructors** Salary up to £14,587\* (Ref M4)
- **Operations Assistants** Salary up to £12,334\* (Ref M5)
- **Customer Service Assistants** Salary up to £12,160\* (Ref M6)

*\*Unsocial hours payment, or shift pay, and weekend enhancements will be paid, in addition, to the above salaries where applicable.*



**Closing Dates for all Posts: 22nd September 2009.  
Pay award pending on all posts**

Sefton is an equal opportunities employer and welcomes applications from all sections of the community.

**For an application pack contact [recruitment@regen.sefton.gov.uk](mailto:recruitment@regen.sefton.gov.uk)  
or call the 24 hour recruitment line on 0151 934 2860**

[www.active-sefton.co.uk](http://www.active-sefton.co.uk)

Active Sefton is a partnership between Sefton Council, NHS Sefton and the local voluntary and community sectors



## Brighton & Hove: Sport & Leisure

Following a re-structure the Sport & Leisure Division Management Team three exciting new opportunities have arisen to work in the vibrant seaside city of Brighton & Hove.



### Seafront Development Manager (Ref No: ENV14986) M9 £35,953-38,575

With 13 miles of Seafront, you will be responsible for ensuring the development and management of the City's most popular recreation resource. This important role will lead on a range of Seafront infrastructure projects as well as the manager of the council's Seafront team, Volk's Railway and client responsibility for Seafront properties. The successful candidate will need knowledge of operational and project management; Experience of strategic planning and large complex budget management; coupled with experience of the initiation, development and completion of revenue and capital projects in sport and leisure and proven ability to lead, direct, motivate and develop teams and individuals.

### Senior Administrative & Finance Officer (Ref No: ENV14985) Scale 6 £22,001- 23,473

This position involves an important supporting role to the Head of Sport & Leisure, management of administrative support and assisting service managers with budget monitoring. A range of experience is therefore required including the ability to develop the financial and administrative function of the division, experience of being a personal assistant to a senior member of staff and experience of monitoring complex budgets.

### Sports Facilities Manager (Ref No: ENV14987) M9 £35,953-38,575

The city has a range of sporting facilities which are managed by an external operator and other partnership arrangements. You will play a key role in ensuring that continuous improvement is achieved in the service provided by these facilities. The successful applicant will have knowledge and experience of strategic planning of leisure provision, substantial experience at senior management level in developing and managing the delivery of services in public leisure facilities and a record of achievement of working in partnership with other organisations and agencies in the development and delivery of sport and community programmes.

You can obtain an application form for these jobs and further details online at <https://jobs.brighton-hove.gov.uk> or phone the Human Resources Recruitment Line on 01273 292284 (voicemail) or minicom facility 01273 295100. Completed application forms can be submitted online or by post to:

**Human Resources, 4th Floor, Brighton & Hove City Council,**

**Kings House, Grand Avenue, Hove, BN3 2LS**

**Closing date for applications: 14 September 2009**

**Looking for a new challenge...**  
**why not take the plunge with Barr + Wray!!**

## UK Southern Sales Manager

c£30k + Car + Benefits

### The Company

Based in Glasgow Barr + Wray is the UK's leading designer and installer of commercial swimming pools. Our product range includes filtration & water treatment systems, pool tanks, moveable floors, thermal cabins and associated equipment. For further details please visit - [www.barrandwray.com](http://www.barrandwray.com)

### The Position

We are looking for an enthusiastic field sales representative with experience in the Leisure industry to join our busy Sales team. Preferably based in the Midlands area you will report directly to our UK Sales Director. Ideally you should have knowledge of pool water treatment and operating procedures within a swimming pool leisure centre facility. You will have to be a self starter with first class presentational and negotiation skills.

**Closing date: 24th September 2009**

**If you're looking for a new challenge and you believe you have the required skills then please send your CV to:**

**Ian Montgomerie**  
**Barr + Wray Limited**  
**324 Drumoyne Road**  
**Glasgow G51 4DY**

**or email to: [imontgomerie@barrandwray.com](mailto:imontgomerie@barrandwray.com)**



## 55 Plus Activator

21hours per week

Scale SO1 SCP 29 £15,684 per annum (inclusive of OLV)  
 Fixed Term for two years

The aim of this post is to develop a programme of sports and physical activities for those aged 55+ and will involve a combination of co-ordination and delivery of sports activities in a variety of settings to increase the number of people aged 55+ taking part in sport and activity. This post will be employed by Age Concern Hillingdon and seconded to the Sports Development Team at the London Borough of Hillingdon. The successful candidate will ideally have a National Governing Body Coaching qualification at Level 2 and have experience of working in sports development or leisure, a degree or equivalent in a sports related subject would be desirable.

*All posts are subject to an enhanced CRB check. A full UK driving licence and access to own transport is essential for this post.*

**Closing Date for receipt of completed application forms is:**  
**Monday 5th October 2009 at 9am**  
**Interview Date: 19th October 2009**

**To apply for the above vacancies send stamps to the value of 61p stating in full which position you are applying for to:**  
**Age Concern Hillingdon, Globe House, Bentinck Road,**  
**West Drayton UB7 7RQ.**

**For more information and to download the application pack see our website: [www.ageconcernhillington.org.uk](http://www.ageconcernhillington.org.uk)**



## Coaching Development Manager Posts (North West)

**Part of the national Coaching Development Manager Network (3 posts)**

***Do you have a passion for coaching? Do you believe that coaching is one of the key drivers to sporting success? Would you like to play a role in developing a world-leading coaching system in England?***

Funded by Sport England and supported by sports coach UK, the 49 County Sports Partnerships across the country are recruiting dedicated roles that reflect the importance that is being placed upon coaching by government and the major funding partners.

The Coaching Development Managers will have responsibility for managing the development of a local Coaching Support Network to support coaches at community level in response to identified need. Working closely with the Governing Bodies of Sport and key regional and local partners the Coaching Development Managers will support the development of an effective and sustainable coaching system at a local level that will be seen as world leading.

If you believe one of these roles is for you, or if you are interested in finding out more about them, then contact or follow the link for the County Sports Partnerships for further details on the role, and how to apply.

**Please note you need to complete an application form for each job you may want to apply for.**

### Cheshire & Warrington Sports Partnership Coaching Development Manager

Closing date: 12th October 2009 Interview date: 19th October 2009

**Application forms and further details are available from Rebecca Pratt Tel: 0844 815 6151 Email: [r.pratt@dlp.org.uk](mailto:r.pratt@dlp.org.uk)**

**For an informal discussion please contact Paul Kendall, Partnership Manager on 01606 720486.**

**Or to apply on line please follow the link below**  
**[www.cwsportspartnership.org/about-us/job-vacancies](http://www.cwsportspartnership.org/about-us/job-vacancies)**

### Greater Manchester Sports Partnership Coaching Development Manager

Closing date: 5th October 2009 Interview date: 13/16th October 2009

**To request an application by post please contact Viv Elvidge, on 0161 223 1002**

**For an informal discussion regarding the post please contact Alexandra Moore, Development Director, 0161 223 1002**

**Or to apply online please follow the link below**  
**[www.greatersport.co.uk/about-us/jobs](http://www.greatersport.co.uk/about-us/jobs)**

### Lancashire Sport Coaching Development Manager

Closing Date: Mon 28th Sept 2009 Interview Date: 8th October 2009

**For queries about the application process please contact Julia Cookson, HR Administrator on 01995 642289**

**For further information about the post please contact Carol Ross, Workforce development manager on 01995 642280**

**Or to apply on line please follow the link below**  
**[www.lancshiresport.org.uk/about-us/jobs-in-sport](http://www.lancshiresport.org.uk/about-us/jobs-in-sport)**

NB (Merseyside Sports Partnership and Cumbria Sports Partnership Coaching Development Manager appointments will follow shortly)





## New Team, New Facility, Maintaining Excellence... in Sefton

**ACTIVE**  
SEFTON



**Located in Crosby Coastal Park on the Mersey Estuary, the U.K.'s newest and most accessible Water**

**Sports Centre will open later this year. This £9m addition to our impressive portfolio of facilities requires 3 highly experienced and dynamic Managers to help us establish the centre as a regional centre of excellence, particularly for disability water sports.**

**With 14 fully accessible double bedrooms, fitness suite, bar & restaurant, conference & meeting rooms, training and education suites, there is the potential to make this one of the best facilities in its class within England. This is what we want you to do!**

**We will expect a lot, but you will be part of an award winning team and we offer an excellent environment in which to work and live.**

**Senior Development Manager** (Water Sports & Adventurous Activities) Salary up to £31,439 (Ref DM1)

**\* Development Manager** (Water Sports & Adventurous Activities) Salary up to £26,016 (Ref DM2)

**Development Officer** (Disability Water Sports & Residential) Salary up to £21,306 (Ref DO3)

*\*Funded by Sport England*



**Closing Dates for all Posts: 25th September 2009.  
Pay award pending on all posts**

Sefton is an equal opportunities employer and welcomes applications from all sections of the community.

**For an application pack contact [recruitment@regen.sefton.gov.uk](mailto:recruitment@regen.sefton.gov.uk) or call the 24 hour recruitment line on 0151 934 2860**

[www.active-sefton.co.uk](http://www.active-sefton.co.uk)

Active Sefton is a partnership between Sefton Council, NHS Sefton and the local voluntary and community sectors

Sefton Council



### Football Development Officer (Girls' and Women)

Salary £22,000



Suffolk FA

Suffolk FA is seeking to recruit a Football Development Officer (Girls' and Women) on a fixed term contract until 30th June 2011. This position reports directly to the County Football Development Manager and will support and develop all areas of girls' and women's football in accordance with the County FA Development Plan.

The role encompasses the following areas:

- Increasing female Participation and supporting Club/League development particularly through the School-Club Links programme and the FA Charter Standard Scheme
- Increasing and supporting female Coaches, Volunteers, Young Leaders, Tutors and Referees
- Ensuring that Talent Development is delivered through the FA Centre of Excellence
- Support and develop opportunities for under represented groups
- Working strategically with key agencies e.g. County Sports Partnerships, Local Authorities, Local Education Authorities, schools, local leagues and clubs

The successful candidate is likely to be a graduate with knowledge and experience of sports development. An understanding of female football structures and pathways, barriers faced by females and knowledge of sports equity is required. You need to be passionate about and committed to the development of female football at a local level.

Applicants must hold a full driving licence and be able to work some evenings and weekends.

A full job description and person specification can be downloaded at [www.suffolkfa.com](http://www.suffolkfa.com).

To apply please send a CV and covering letter with details of your current salary and your salary expectation for the role marked "Private and Confidential" to:

County Football Development Manager, Suffolk FA, Bill Steward House, The Buntings, Stowmarket, IP14 5GZ or email [chris.pringle@suffolkfa.com](mailto:chris.pringle@suffolkfa.com).

The closing date is **8th September 2009**

Interviews will take place on **24th September 2009**

Suffolk CFA is committed to equality of opportunity and welcome applications from all sections of the community



Driving women's golf

**ENGLAND**  
GOLF PARTNERSHIP



England Golf  
Growing The Game

### INCLUSION AND DIVERSITY DEVELOPMENT OFFICER

National Remit

Salary: £22,510-£26,226 + car + benefits  
Fixed term until March 2013

The England Golf Compliance Team requires an Inclusion and Diversity Development Officer to contribute to our aim to increase participation amongst currently under-represented groups, such as women and girls, disabled people and those from the black and minority ethnic community.

The Inclusion and Diversity Development Officer (IDDO) will broker relationships with external stakeholders, enhance existing and develop new initiatives, identify development opportunities and disseminate examples of good practice to support the Development Teams in the delivery of the Whole Sport Plan for Golf.

This will be a home based position, with travel as necessary to meetings, and weekend and evening work. The IDDO will be employed and managed by the English Women's Golf Association, but will be responsible for delivery across the EGP partners. They will therefore be required to visit the offices of the EWGA in Birmingham frequently.

We are ideally seeking candidates with a relevant degree or diploma, knowledge of golf and its administrative structure, and a clear understanding of the issues related to participation in sport by the identified priority groups. Previous experience of working in the sports/leisure/golf industry is desirable though not essential. A strong motivation to contribute to widening access in golf and ability to work with both professionals and volunteers is essential.

**If you feel that you have the necessary skills and experience, please apply in writing with your CV to Lynn Walker, EWGA, 11 Highfield Road, Edgbaston, Birmingham B15 3EB.**

**For further information call Lynn Walker on 0121 456 2088 or email her at [lynn@englishwomensgolf.org](mailto:lynn@englishwomensgolf.org). The job description can be found at [www.englishwomensgolf.org](http://www.englishwomensgolf.org)**

**Closing Date: 25 September 2009 Interviews will be held: 05-09 October 2009**



## NORTHAMPTON BOROUGH COUNCIL Community Sports and Physical Activity Development Officer

£22,001 to £23,473 pa (Subject to pay and Grading)  
(Fixed term contract until 31 August 2011) Ref:474

In this exciting role, you will complete the successful implementation of a Sport England Lottery-funded project across the Spencer and Eastfield estates. This will involve engaging people of all ages and abilities, developing sport, physical activity and health initiatives whilst bringing together diverse agencies to ensure joined-up solutions.

Naturally, you're passionate about community cohesion, dedicated to reducing crime and disorder, and capable of thinking innovatively to secure funding. At the same time, you should bring a good degree in Sports Studies or a related field plus at least one national governing body coaching qualification, backed by excellent project leadership and organisational skills. Above all, you're a real self-starter who is ready to go the extra mile and do whatever it takes to make a difference.

For an informal discussion please contact Lawrence Kay, Sports and Play Development Manager, tel 01604 837647.

**A CRB Enhanced Disclosure (criminal record check) will be requested in the event of a successful application.**

**Closing date: 15th September 2009. Interview date: To Be Confirmed.**

Please quote the reference number shown on this advert when requesting an application form

**Application forms (which must be fully completed) can be obtained from Human Resources at Northampton Borough Council, The Guildhall, St Giles Square, Northampton, NN1 1DE. Telephone our Recruitment Line (answerphone) on (01604) 837529 or email: [recruitment@northampton.gov.uk](mailto:recruitment@northampton.gov.uk)**

NORTHAMPTON BOROUGH COUNCIL - WORKING TOWARDS EQUAL OPPORTUNITIES

## People like YOU



### Sports & Strategy Manager

£35,953 – £44,646, fixed-term contract for 11 months

Joining our Sport and Recreation Section, you'll oversee the development of our sport and physical activity strategy, as well as focus on enhancing city partnership working. You'll be the key lead for driving forward the achievement of the NI8 local area agreement target, and you'll manage a team of people to increase active participation levels across the City. Naturally, you'll need to demonstrate in-depth knowledge of the sporting challenges and opportunities for the City from a local, regional and national perspective, as well as show creative problem-solving skills to support this. Your background in strategic management and experience in the sporting sector will really come into play, as you'll need an innovative and influential approach to deliver positive change. Excellent interpersonal skills are of course essential and a successful track record in creating strong partnerships with the Health and Education sectors will be an advantage.

Informal enquiries are welcomed by Kieran Humphrey, Project Manager on 023 8083 2920.

### work at Southampton City Council

Apply now at [www.hampshirejobs.org.uk](http://www.hampshirejobs.org.uk) Email: [hr.pay@southampton.gov.uk](mailto:hr.pay@southampton.gov.uk)

Tel: 023 8083 3111 quoting ref: 27374.

Minicom: 023 8083 2838.

**Closing date: 18 September 2009.**

Celebrating diversity, improving opportunity.  
Jobs are open to job-share unless otherwise stated.





Inspiring people to... **feel great!****Contract Manager – Daventry**

An opportunity has arisen for a Contract Manager with SOLL Leisure. An extremely varied and challenging role working with senior management to achieve commercial/social objectives. You need to demonstrate your ability to set and work within strict budgets to maximise potential of all profit centres and ensure quality and standards

You will have worked at a similar level with multi-site management experience as well as proven relationship building with leisure partners. You need to demonstrate sound commercial awareness, integrity and leadership with ability to provide clear and measured direction.

**Candidates will need:**

- Qualification in leisure or sport at degree level, or relevant experience
- Sound knowledge of health and safety legislation
- Strong facility management background and excellent commercial achievement

**Operations Manager - Daventry**

Reporting to the Contract Manager you will have full responsibility for the daily operations of this busy leisure centre teams in Reception, Food and Beverage, Housekeeping, Lifeguards, and pool plant operation. Accountable for managing developing the team to deliver the KPIs for each department.

A strong leader, you will have experience of delivering high standards of service through others; working to achieve budget targets. With a 'hands on approach' you will create a culture of excellent customer care and generate excellent teamwork.

**Requirements:**

Develop a quality service that meets SOLL Leisure's strategic objectives.

- Manage operational aspects of the business:
- Customer care;
- Balanced programme of activities.
- Income reconciliation, banking;
- Stock taking and checking supplies and equipment.
- Preparation of budgets;
- Compilation and presentation of records, KPI's, and reports;
- Implementation of Health and Safety
- Undertake the duties of a Duty Manager as part of a rolling shift pattern

No agencies please.

**Contact:** Joan Evans, HRM, SOLL Leisure, Tilsley Park, Abingdon, OX14 1PU. 01235 524524 or mobile 07795 293079 Email: [jevans@soll-leisure.co.uk](mailto:jevans@soll-leisure.co.uk)

**Cool Customer?****RINK MANAGER**

**£20k - £22k depending upon experience**

Reporting to the Deputy General Manager, you will be part of a team of Rink Managers taking ownership of all operational aspects of the venue, including the resolution of all issues in respect of customers, building matters and the day to day supervision and management of staff. The Rink Manager operates in a duty manager capacity for the whole venue and therefore will be required to provide a full range of operational support to the business.

You will need proven experience of managing staff gained in a leisure environment and must be able to demonstrate excellent communication skills and the ability to motivate and lead your team to deliver an exceptional level of service. It is also essential for you to have a high level of literacy, numeracy and IT skills as the position requires accurate and timely administration to be completed in areas such as health and safety and management reporting.

If you have operational experience gained within a leisure/hospitality environment and can demonstrate that you are as dynamic and as exciting as our business, we want to hear from you.

**For further information and to apply for this exciting position, please visit our website [www.trentfmarena.nottinghamham.com](http://www.trentfmarena.nottinghamham.com)**

**Alternatively please send an email to [hr.department@national-ice-centre.com](mailto:hr.department@national-ice-centre.com) to request an application pack.**

Closing date for applications:  
Sunday 20th September 2009.  
Strictly no agencies.

**AMATEUR SWIMMING ASSOCIATION****Regional Development Coach – Disability Swimming (Yorkshire)**

**Salary: £24,959 per annum  
(Plus contributory pension scheme)**

The ASA is the National Governing Body (NGB) for Swimming and its associated disciplines in England with its headquarters situated in the centre of Loughborough.

Following the recent success of Team GB at the Beijing Paralympics 2008 and looking ahead to London 2012, The ASA is looking to appoint a Regional Development Coach (Yorkshire) for Disability Swimming. The postholder will be responsible for developing and implementing systems, which will identify and support swimmers with a disability within Yorkshire and nationally. The aim is to identify and support new and existing swimmers with potential talent and increase participation. This will be achieved by establishing and developing a Regional Squad structure and working with key partners to implement a Swimmer/Talent Identification programme. The postholder will also play a vital role in establishing and mentoring a network of ASA Swim 21 clubs with the ability to implement the LTAD for swimmers with a disability.

A minimum of UKCC level 2 Teacher/Coach or equivalent qualification is essential along with proven experience of Sports Development work. Excellent communication and interpersonal skills are essential with a proven ability to identify and understand the needs of teachers, coaches, volunteers and swimmers at all levels. The successful candidate must also have proven knowledge of Club Accreditation and County Sports Partnerships and have an appreciation of their significance within the World Class programmes. Knowledge of the British Swimming continuum and of the Playground to Podium initiative is essential.

The Organisation is committed to diversification of its work force and welcomes applications from all sections of the community. The Organisation is committed to being an equal opportunities employer. We currently hold the Foundation, Preliminary levels and Intermediate Levels of the Equality Standard.

**The closing date for applications is: 11 September at 12:00noon with interviews taking place on 24 September 2009.**

**To obtain an application form and job description please contact our 24 hour employment line on 01509 618703, e-mail [HRDepartment@swimming.org](mailto:HRDepartment@swimming.org) or write to: HR Department, The ASA, 39 Granby Street, Loughborough, LE11 3DU. Alternatively you can visit our website [www.britishswimming.org](http://www.britishswimming.org) and download an application pack.**

**Active Adult Development Officer****Environment & Development Services**

**£21,306 - £24,402 per annum**

**Ref: 3427**

**Please visit  
[www.bury.gov.uk/jobsandcareers](http://www.bury.gov.uk/jobsandcareers)  
for more information**



**GEDLING BOROUGH COUNCIL**  
**LEISURE SERVICES DEPARTMENT**

Ref No: LCF20C

**ASSISTANT MANAGER**

CARLTON FORUM LEISURE CENTRE

Band 6: £19,998 - 21,306 per annum

We are looking for a self-motivated and dynamic Assistant Manager to join our team. Carlton Forum is a multi faceted facility situated in the heart of the community in Gedling, Nottinghamshire. It has recently received 'Highly commended' ratings within the QUEST Quality Scheme.

You will work closely with the Operations Manager, assisting with developing and implementing the Centre's business, improvement, marketing and performance plans and in helping to achieve in Gedling Borough Council's Changing Lifestyles Strategy. In addition you will act as Duty Manager on a rota basis.

You must have supervisory experience in a relevant environment along with experience of managing a diverse workforce with a thorough knowledge of health and safety requirements. You must be able to demonstrate a high level of literacy and numeracy with a sound understanding of administration and financial management. Strong communication & team working skills are essential, plus a proven track record of working in a customer-focused environment.

You must have experience of, and be able to demonstrate planned preventative maintenance schemes, managing contractors, Plant & Building Maintenance.

Marketing and promotional skills along with a high level of IT literacy are also essential as are leadership and team building skills. A relevant professional leisure qualification and practical knowledge and understanding of Quest or similar quality systems would be beneficial.

*Further details/application forms can be obtained by quoting the reference number when:*

- E-mailing [pod@gedling.gov.uk](mailto:pod@gedling.gov.uk)
- Calling 0115 901 3864  
(24 Hours answer service)
- or downloading from the website.

Closing date for completed applications is 18 September 2009.



**GEDLING**  
BOROUGH COUNCIL

Aiming for Equal Opportunity



**Sports Facility Manager**

£28,172 - £30,598 (full time)

A manager is required to run a unique Liverpool based facility incorporating sports hall, gym, restaurant, conference and accommodation. Applicants must demonstrate proven senior management experience in a sporting environment and have a commitment to equality and diversity.

No CVs - applicants must complete a Greenbank application form available from [greenbank-project.org.uk/vacancies](http://greenbank-project.org.uk/vacancies) or call 0151 733 7255. Closing date 14.09.09



Saving wetlands  
for wildlife & people

**Centre manager**  
**Arundel, West Sussex**  
**37.5 hours per week**  
**££32,000 pa**

The Wildfowl and Wetlands Trust (WWT) is the largest international wetland conservation charity in the UK. Its mission is to promote, protect and develop wetlands and their wildlife. WWT operates nine visitor centres in the UK and our Centre at Arundel is one of the largest visitor attractions in West Sussex. This is your opportunity to become part of the exciting team that aims to bring people and conservation closer together.

WWT is looking to make the key appointment of centre manager at Arundel. We are looking for an enthusiastic and committed individual to ensure its effective operation and growth in line with the Trust's policies, procedures and financial targets.

This demanding role involves a wide range of activities including the overall day to day management of the centre, selection and training of all staff, achievement of annual performance objectives and the promotion of the centre's activities.

Experience of being involved with the running and management of a commercial operation is essential and experience of working within a visitor attraction would be a distinct benefit. The ability to communicate, motivate and use IT effectively is essential, as is the need to have an empathy with our conservation work.

**To apply for this position please visit our website at [www.wwt.org.uk](http://www.wwt.org.uk) to download an application pack. Alternatively you can email [recruitment@wwt.org.uk](mailto:recruitment@wwt.org.uk) or write to HR Department, WWT Slimbridge, Gloucestershire, GL2 7BT**

Closing date for applications is 14th September 2009.

First interviews will be held on 23rd/24th September 2009 at WWT's HQ, Slimbridge, Gloucestershire with second interviews on 29th September 2009 at WWT's London Wetland Centre.

Saving wetlands for wildlife and people  
Registered Charity Number: 1030884

**leisure opportunities**  
**joblink**

Book a joblink with us and we'll put your logo and company name on every page of the Leisure Opportunities website [www.leisureopportunities.co.uk](http://www.leisureopportunities.co.uk)

This advert will have a hyperlink to your website, where you can list all the job vacancies in your company.



Go to [www.leisureopportunities.co.uk](http://www.leisureopportunities.co.uk) and click on the link to see the latest jobs from...



**TO BOOK** Call: +44 1462 471747  
and start getting applications for your jobs IMMEDIATELY!





## UNIVERSITY OF LEEDS

### Corporate Services, Sport and Physical Activity Health and Fitness Manager

This is an exceptional opportunity to join the University of Leeds at an exciting time in Sport and Physical Activity. The new £12.5m swimming pool and 200 station fitness suite will open in the Spring of 2010 and being part of this development will provide an excellent opportunity to further your career within a challenging and dynamic service.

You will be the commercial lead for the Health and Fitness Team setting effective, high quality customer service standards in conjunction with the Assistant Director and oversee delivery of those standards on a day to day basis. This role will see you taking responsibility for and ensuring the highest standards of leadership and management of staff and budgetary control. You will have substantial, recent experience in the fitness industry including previous experience and knowledge of designing personal programmes, fitness testing and gym inductions, in conjunction with appropriate qualifications. This post will require flexible working (evenings and weekends).

**University Grade 7 (£29,704 - £35,469 p.a.)**

Informal enquiries to Mr Bill Butterworth tel +44 (0)113 343 4921 email [w.j.c.butterworth@leeds.ac.uk](mailto:w.j.c.butterworth@leeds.ac.uk)

For an application pack visit [www.leeds.ac.uk](http://www.leeds.ac.uk) and click on jobs or contact James Winn tel +44 (0)113 343 5080 email [sport@leeds.ac.uk](mailto:sport@leeds.ac.uk)

Job ref 211082 Closing date 1pm 11 September 2009

Interviews will take place 24 September 2009

Find out more about our exciting development at [www.leeds.ac.uk/sportsrevolution](http://www.leeds.ac.uk/sportsrevolution)

We welcome applications from all sections of the community. Textphone for deaf applicants only +44 (0)113 343 4353. All information is available in alternative formats please contact +44 (0)113 343 4146.

WORKING TOWARDS EQUALITY AND DIVERSITY

[www.leeds.ac.uk](http://www.leeds.ac.uk)

### Fitness Instructor & Massage Therapist Part Time - Up to 24 hours p.w. - hours negotiable Up to £13,000 p.a. depending on qualifications

Sodexo are looking for an outgoing, motivated individual to join their busy fitness team at Farnborough. In this varied role, you will look after our members and create a welcoming environment. There will also be the opportunity for sports massage, personal training and teaching group exercise. With relevant experience, you will be registered with REPS at level 2 or above.

To apply, please forward your CV with covering letter to [edward.hare@baesystems.com](mailto:edward.hare@baesystems.com) or contact him on 01252 383022

[www.sodexojobs.co.uk](http://www.sodexojobs.co.uk)

**sodexo**

### Health and Fitness Manager

Wellsprings Leisure Centre - Taunton, Somerset.

SCP 19 - 23 (£17,626 - £19,998)

37 hours per week (including morning, evening and weekend shifts).

**tone**  
leisure

Reporting to the Centre Manager, the successful applicant will be responsible for all aspects of day-to-day gym operations including membership sales and retention, fitness class performance and the continual improvement of standards within the health and fitness facilities.

To provide ongoing training and management to ensure that customers' expectations are met by staff in a professional and accountable manner, and to meet agreed business goals and targets.

**The successful applicant will ideally have:**

- A suitable qualification (e.g. Sports Management degree)
- Level 3 Register of Exercise Professionals
- Level 3 Gym Instructors qualification
- GP referral qualification
- Group fitness class qualifications

For full details and/or to apply online go to [www.tone-careers.com](http://www.tone-careers.com) or contact Sam King on 01823 356311 for an application pack.

### Luton Hoo, Bedfordshire

### COUNTRY CLUB MANAGER



Luton Hoo Hotel, Golf & Spa is a luxury five star destination with 228 bedrooms and an 18 hole golf course all encompassed within 1,065 acres of historic parklands.

The Country Club Manager is a senior management role focusing on operating the Country Club and its facilities including golf, spa, leisure and retail outlets, to maximise their financial contribution to the overall business and ensure superlative standards of customer service in all areas of the operation.

We are looking for an experienced manager with a strong operational and club management track record in the luxury hotel market.

If you wish to realise a career with Elite Hotels in the first instance please apply online at [www.careersatelitehotels.co.uk](http://www.careersatelitehotels.co.uk) or send your CV to Loren Flowers, Personnel and Development Manager, Luton Hoo Hotel, Golf & Spa, The Mansion House, Luton, Bedfordshire, LU1 3TQ.

[www.lutonhoo.co.uk](http://www.lutonhoo.co.uk)



[www.leisureopportunities.co.uk](http://www.leisureopportunities.co.uk)  
**leisureopportunities**

news & jobs updated daily online

YOUR 1ST CHOICE FOR RECRUITMENT & TRAINING

**NEXT ISSUE:**

**15 SEPTEMBER**

BOOK BY NOON ON

WEDS 9 SEPTEMBER 2009



**TO ADVERTISE, Contact the  
Leisure Opportunities team on  
t: +44 (0)1462 431385  
e: [leisureopps@leisuremedia.com](mailto:leisureopps@leisuremedia.com)**

## ROCKLIFFE HALL

HOTEL • GOLF • SPA

### FITNESS MANAGER

At Rockliffe Hall our Gym and Studios are an important part of the overall Spa experience and as such we want to recruit a passionate fitness leader who can ensure his/her team will deliver the very highest level of service both on the gym floor and through a wide variety of activities, therapies, group exercise classes and personal training.

**The Requirements:-**

- Good leadership and coaching skills
- Level 3 R.E.P.s or equivalent qualification
- Minimum 5 years in fitness industry
- IT competent

### FITNESS SPECIALISTS

As well as offering the best fitness advice and support to our guests on the gym floor, Fitness Specialists can work to their strengths through Personal Training, Pilates, Sports Therapy and Massage, Group Exercise and Outdoor Activities, depending on qualifications and experience.

**The Requirements:-**

- Good customer and people relationship skills
- Minimum level 2 R.E.P.s or equivalent qualification
- Minimum 2 years in fitness industry

Make your application by email to Kathryn Hancock  
[recruitment@rockliffehall.com](mailto:recruitment@rockliffehall.com)

# news & jobs at [www.leisureopportunities.co.uk](http://www.leisureopportunities.co.uk)

## Merlin to open Sea Life aquarium in Phoenix mall

New 26,000sq ft attraction to launch next year with 12 different habitat zones and more than 30 displays

By **Tom Walker**

UK-based visitor attractions operator Merlin Entertainments will open a US\$15m (£9m, €11m) Sea Life aquarium in Phoenix, US early next year.

Scheduled to open in time for Easter 2010, the 26,000sq ft (2,416sq m) aquarium will be located at the city's Mills Mall mixed-use development and will include 12 different habitat zones housing more than 30 display tanks.

Glenn Earlam, managing director of Merlin's Midway

Attractions, said: "We've already proved that quality retail and leisure provide an ideal commercial mix for our Midway brands – which are short stay indoor attractions. They not only provide an ideal extra element to a family shopping day out, but more importantly drive significant incremental traffic for our retail partners."

Earlam added that the company is looking at further expanding its portfolio of attractions in North America. Sea Life Phoenix is Merlin's eighth attraction in the US.



Merlin already operates two Sea Life aquariums in the US

## Leeds City Council set to approve new play areas

By **Pete Hayman**

Leeds City Council's (LCC) executive board is set to decide on the locations of the final six sites that will receive a share of a funding package worth £1.1m for the development of new play areas.

The funding has been made available through the Department for Children, Schools and Families' (DCSF) Playbuilder scheme, and will see a total of



The deal includes 22 new areas

22 play areas either created or refurbished at locations across the city. New play areas are likely to be situated within

parts of Leeds that do not currently provide good access for young people to play sites, while it is hoped that new equipment and landscaping will play a role in the council's wider regeneration strategies.

Stewart Golton, LCC executive board member responsible for children's services, said: "Outdoor play is such an important part of a child's life and has a great impact on their future development."

## Kids outpriced from parks

A children's charity has called on attractions operators to lower their prices after a study claimed that a third of children have never visited a theme park.

A survey by 4Children shows that 38 per cent of school-aged children have never visited a park due to their parents not being able to afford the costs.

## CONTACTS BOOK

**Arts & Business** +44 (0)20 7378 8143  
[www.aandb.org.uk](http://www.aandb.org.uk)

**ALVA** +44 (0)20 7222 1728  
[www.alva.org.uk](http://www.alva.org.uk)

**Arts Council** +44 (0)20 7333 0100  
[www.artscouncil.org.uk](http://www.artscouncil.org.uk)

**ASVA** +44 (0)1786 475152  
[www.asva.co.uk](http://www.asva.co.uk)

**BALPPA** +44 (0)20 7403 4455  
[www.balppa.org](http://www.balppa.org)

**BHA** +44 (0)845 880 7744  
[www.bha-online.org.uk](http://www.bha-online.org.uk)

**BICM** +44 (0)845 217 1811  
[www.bicm.co.uk](http://www.bicm.co.uk)

**BiSL** +44 (0)20 8780 2377  
[www.bisl.org](http://www.bisl.org)

**CCPR** +44 (0)20 7976 3900  
[www.ccpr.org.uk](http://www.ccpr.org.uk)

**CMAE** +44 (0)1334 460 850  
[www.cmaeurope.org](http://www.cmaeurope.org)

**Countryside Agency** +44 (0)1242 521381  
[www.countryside.gov.uk](http://www.countryside.gov.uk)

**CPRE** +44 (0)20 7981 2800  
[www.cpre.org.uk](http://www.cpre.org.uk)

**English Heritage** +44 (0)870 333 1181  
[www.english-heritage.org.uk](http://www.english-heritage.org.uk)

**FSPA** +44 (0)2476 414999  
[www.sportsandplay.com](http://www.sportsandplay.com)

**FIA** +44 (0)20 7420 8560  
[www.fia.org.uk](http://www.fia.org.uk)

**HHA** +44 (0)20 7259 5688  
[www.hha.org.uk](http://www.hha.org.uk)

**IAAPA** +1 703 836 4800  
[www.iaapa.org](http://www.iaapa.org)

**IEAP** +44 (0)1403 265 988  
[www.ieap.co.uk](http://www.ieap.co.uk)

**Institute of Hospitality**  
+44 (0)20 8661 4900  
[www.instituteofhospitality.org.uk](http://www.instituteofhospitality.org.uk)

**ISPAL** +44 (0)845 603 8734  
[www.ispal.org.uk](http://www.ispal.org.uk)

**LPF** +44 (0)1462 471932  
[www.leisureprop.com](http://www.leisureprop.com)

**LMCA** +44 (0)1278 436910  
[www.lmca.info](http://www.lmca.info)

**MLA** +44 (0)20 7273 1444  
[www.mla.gov.uk](http://www.mla.gov.uk)

**NPFA** +44 (0)20 7833 5360  
[www.playing-fields.com](http://www.playing-fields.com)

**People 1st** +44 (0)870 060 2550  
[www.people1st.co.uk](http://www.people1st.co.uk)

**REPs** +44 (0)20 8686 6464  
[www.exerciseregister.org](http://www.exerciseregister.org)

**SAPCA** +44 (0)24 7641 6316  
[www.sapca.org.uk](http://www.sapca.org.uk)

**Sports Aid** +44 (0)20 7273 1975  
[www.sportsaid.org.uk](http://www.sportsaid.org.uk)

**Sport England** +44 (0)8458 508 508  
[www.sportengland.org](http://www.sportengland.org)

**Springboard** +44 (0)20 7497 8654  
[www.springboarduk.org.uk](http://www.springboarduk.org.uk)

**SkillsActive** +44 (0)20 7632 2000  
[www.skillsactive.com](http://www.skillsactive.com)

**Tourism Management Institute**  
+44 (0)1926 641506  
[www.tmi.org.uk](http://www.tmi.org.uk)

**Tourism Society** +44 (0)20 8661 4636  
[www.tourismsociety.org](http://www.tourismsociety.org)

**VisitBritain** +44 (0)20 8563 3000  
[www.visitbritain.com](http://www.visitbritain.com)

**World Leisure** +1 250 497 6578  
[www.worldleisure.org](http://www.worldleisure.org)